

Data Path : Z:\pestpcbsrv\HPCHEM1\ECD_S\Data\PS032422\
 Data File : PS018749.D
 Signal(s) : Signal #1: ECD1A.ch Signal #2: ECD2B.ch
 Acq On : 24 Mar 2022 19:49
 Operator : AJ\MA
 Sample : N2031-14MS
 Misc :
 ALS Vial : 18 Sample Multiplier: 1

Instrument :
 ECD_S
 ClientSampleId :

Integration File signal 1: autoint1.e
 Integration File signal 2: autoint2.e
 Quant Time: Mar 25 01:23:45 2022
 Quant Method : Z:\pestpcbsrv\HPCHEM1\ECD_S\Method\PS031422.M
 Quant Title : 8080.M
 QLast Update : Mon Mar 14 11:41:05 2022
 Response via : Initial Calibration
 Integrator: ChemStation

Volume Inj. : 2 µl
 Signal #1 Phase : Rtx-CLPesticides Signal #2 Phase: Rtx-CLPesticides2
 Signal #1 Info : 30M x 0.32mm x0.5 Signal #2 Info : 30M x 0.32mm x 0.25µm

	Compound	RT#1	RT#2	Resp#1	Resp#2	ng/ml	ng/ml

System Monitoring Compounds							
4) S	2,4-DCAA	7.228	6.810	984.7E6	238.5E6	346.014	338.924
Target Compounds							
1) T	Dalapon	3.026	2.533	737.5E6	-119094849	189.653	N.D. #
2) T	3,5-DICHL...	6.436	5.983	569.7E6	131.0E6	147.847	125.201
3) T	4-Nitroph...	7.059	6.421	90538658	17261145	52.544	42.486
5) T	DICAMBA	7.420	6.977	2053.5E6	553.3E6	188.281	185.750
6) T	MCPD	7.587	7.069	111.4E6	26606809	13.119	10.868
7) T	MCPA	7.735	7.280	183.3E6	61212309	15.152	17.529
8) T	DICHLORPROP	8.115	7.600	349.0E6	108.9E6	126.706	137.588
9) T	2,4-D	8.343	7.890	648.7E6	201.1E6	193.620	214.839
10) T	Pentachlo...	8.654	8.321	3078.5E6	801.3E6	85.035	81.600
11) T	2,4,5-TP ...	9.208	8.683	1563.5E6	441.5E6	102.806	101.209
12) T	2,4,5-T	9.496	9.060	1920.4E6	523.2E6	128.551	126.310
13) T	2,4-DB	10.046	9.567	146.1E6	77301404	53.425	136.154 #
14) T	DINOSEB	11.174f	9.896	661.4E6	-7983556	61.852	N.D. #
15) T	Picloram	11.024	10.874	5437.2E6	1386.7E6	264.512	260.848
16) T	DCPA	11.478	10.828	4859.0E6	1629.3E6	271.593	309.788

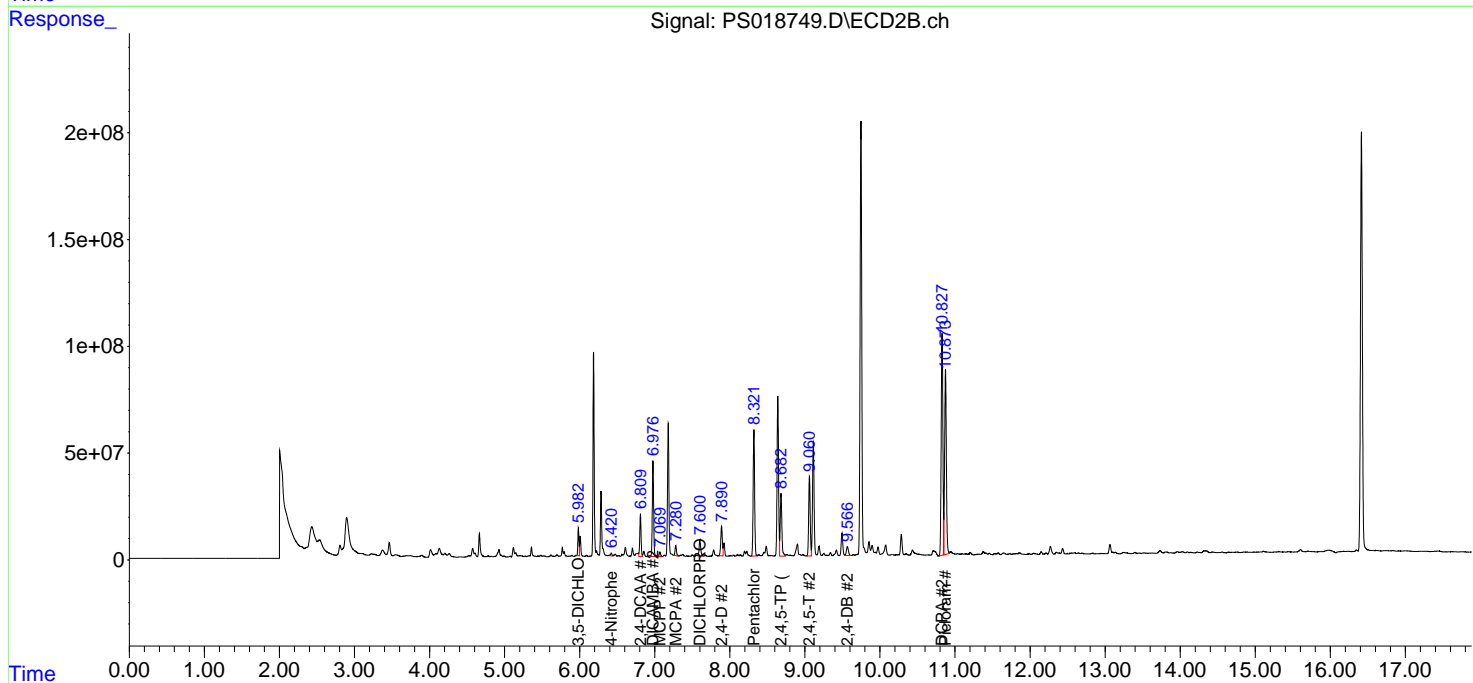
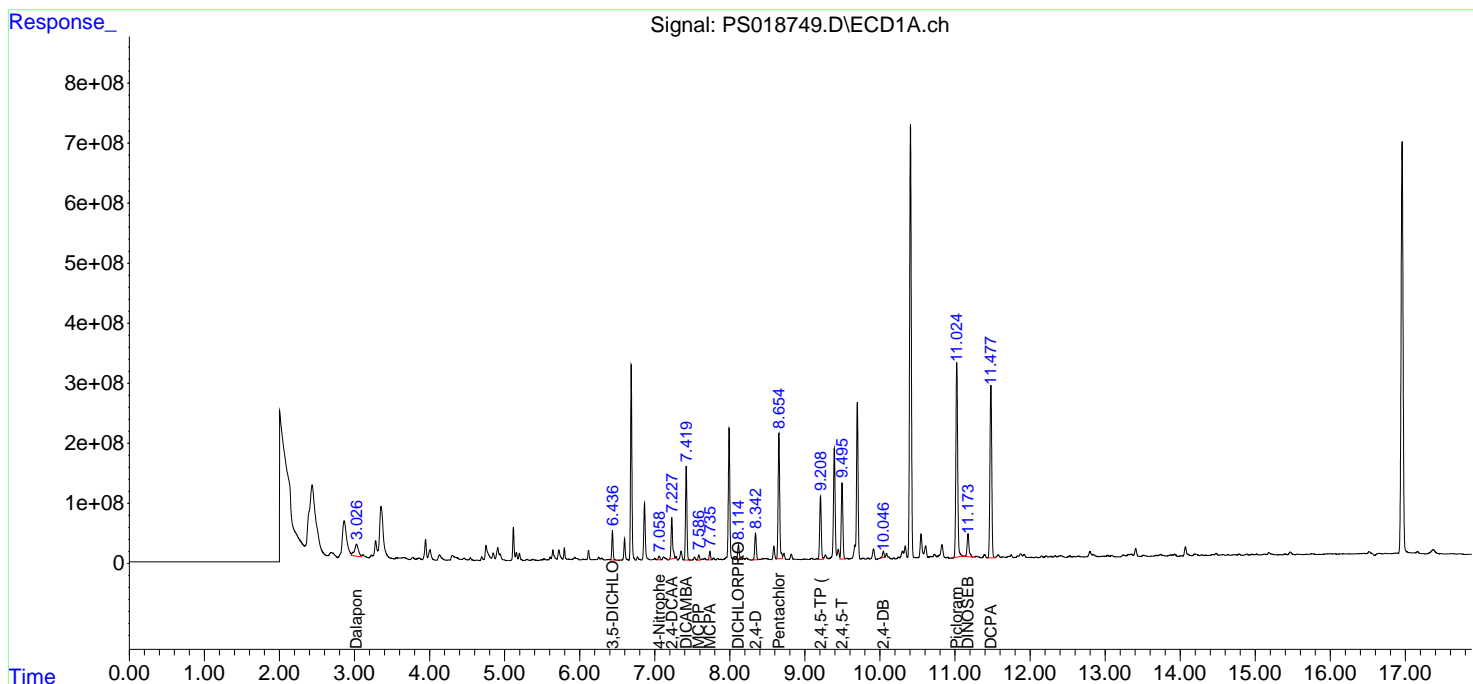
(f)=RT Delta > 1/2 Window (#)=Amounts differ by > 25% (m)=manual int.

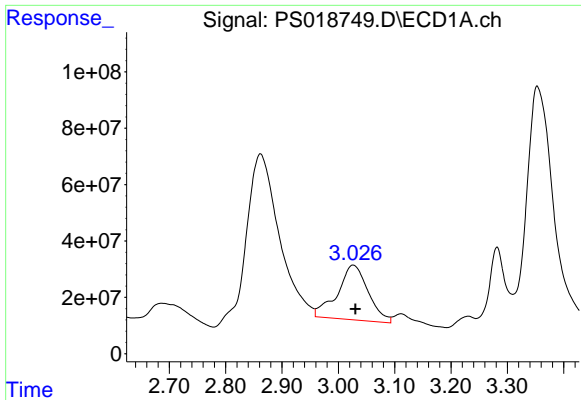
Data Path : Z:\pestpcbsrv\HPCHEM1\ECD_S\Data\PS032422\
 Data File : PS018749.D
 Signal(s) : Signal #1: ECD1A.ch Signal #2: ECD2B.ch
 Acq On : 24 Mar 2022 19:49
 Operator : AJ\MA
 Sample : N2031-14MS
 Misc :
 ALS Vial : 18 Sample Multiplier: 1

Instrument :
 ECD_S
 ClientSampleId :

Integration File signal 1: autoint1.e
 Integration File signal 2: autoint2.e
 Quant Time: Mar 25 01:23:45 2022
 Quant Method : Z:\pestpcbsrv\HPCHEM1\ECD_S\Method\PS031422.M
 Quant Title : 8080.M
 QLast Update : Mon Mar 14 11:41:05 2022
 Response via : Initial Calibration
 Integrator: ChemStation

Volume Inj. : 2 µl
 Signal #1 Phase : Rtx-CLPesticides Signal #2 Phase: Rtx-CLPesticides2
 Signal #1 Info : 30M x 0.32mm x 0.5 Signal #2 Info : 30M x 0.32mm x 0.25µm

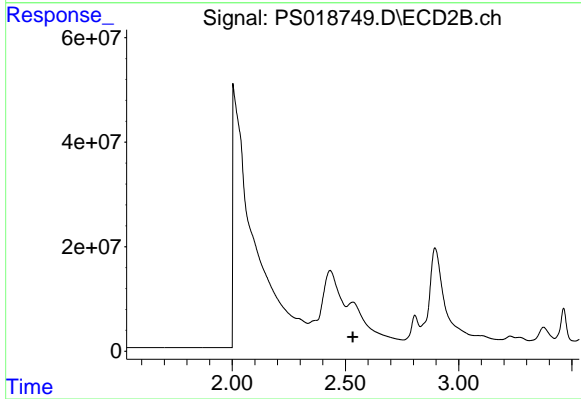




#1 Dalapon

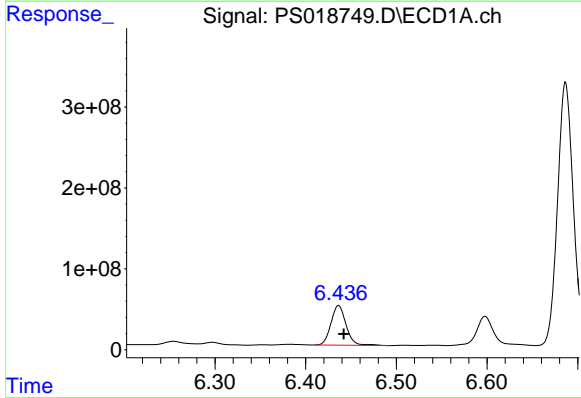
R.T.: 3.026 min
 Delta R.T.: -0.004 min
 Response: 737464549
 Conc: 189.65 ng/ml

Instrument :
 ECD_S
 ClientSampleId :



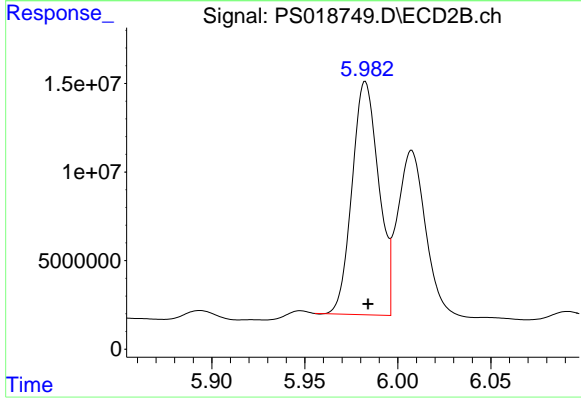
#1 Dalapon

R.T.: 2.533 min
 Delta R.T.: 0.000 min
 Response: -119094849
 Conc: N.D.



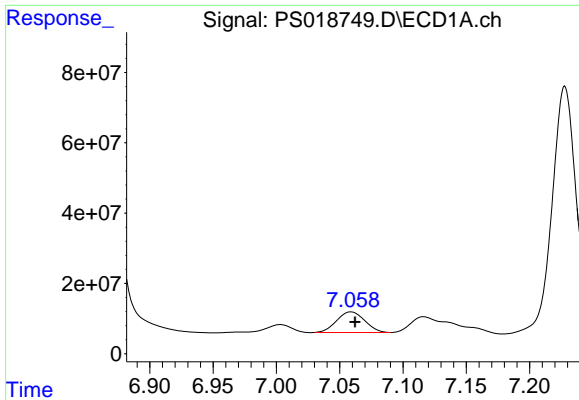
#2 3,5-DICHLOROBENZOIC ACID

R.T.: 6.436 min
 Delta R.T.: -0.006 min
 Response: 569737247
 Conc: 147.85 ng/ml



#2 3,5-DICHLOROBENZOIC ACID

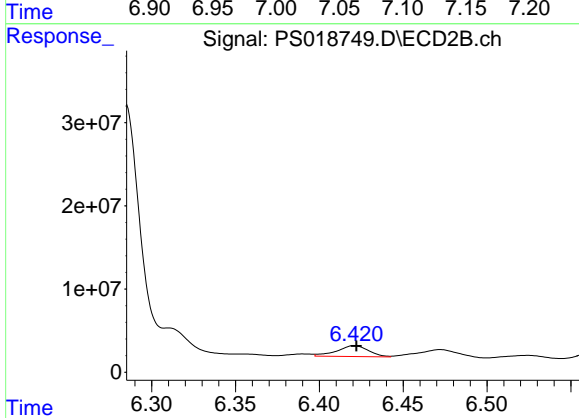
R.T.: 5.983 min
 Delta R.T.: -0.001 min
 Response: 130974325
 Conc: 125.20 ng/ml



#3 4-Nitrophenol

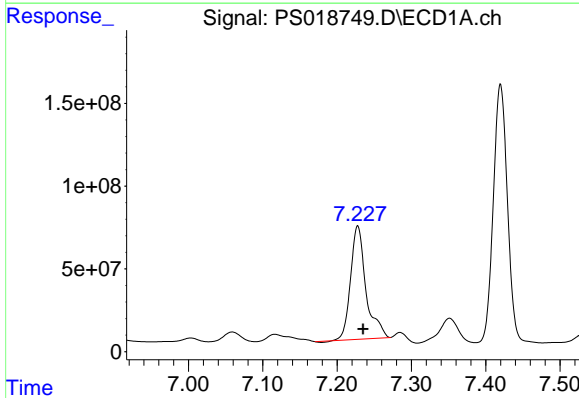
R.T.: 7.059 min
 Delta R.T.: -0.003 min
 Response: 90538658
 Conc: 52.54 ng/ml

Instrument :
 ECD_S
 ClientSampleId :



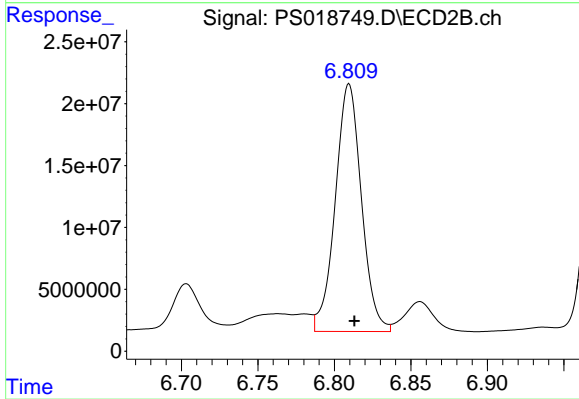
#3 4-Nitrophenol

R.T.: 6.421 min
 Delta R.T.: -0.001 min
 Response: 17261145
 Conc: 42.49 ng/ml



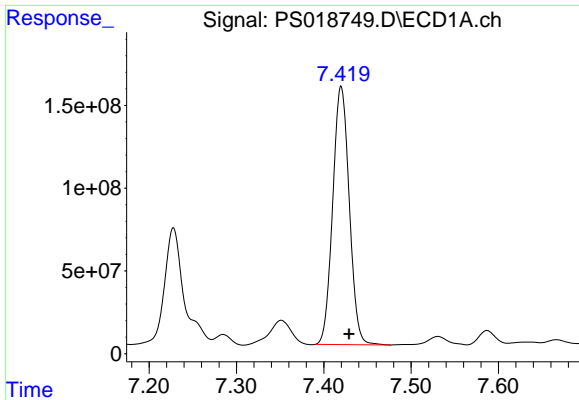
#4 2,4-DCAA

R.T.: 7.228 min
 Delta R.T.: -0.007 min
 Response: 984727503
 Conc: 346.01 ng/ml



#4 2,4-DCAA

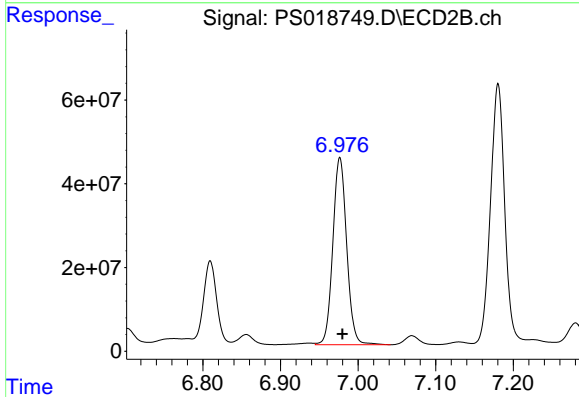
R.T.: 6.810 min
 Delta R.T.: -0.003 min
 Response: 238485357
 Conc: 338.92 ng/ml



#5 DICAMBA

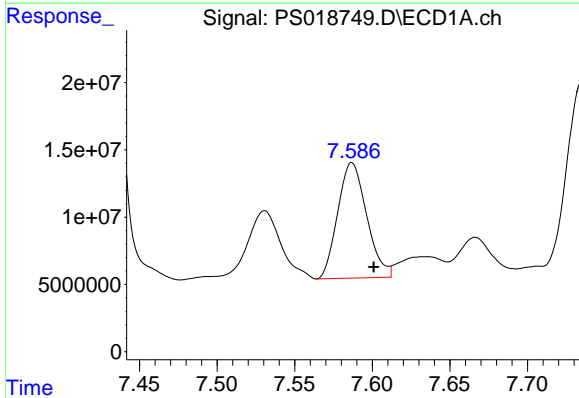
R.T.: 7.420 min
 Delta R.T.: -0.009 min
 Response: 2053530107
 Conc: 188.28 ng/ml

Instrument :
 ECD_S
 ClientSampleId :



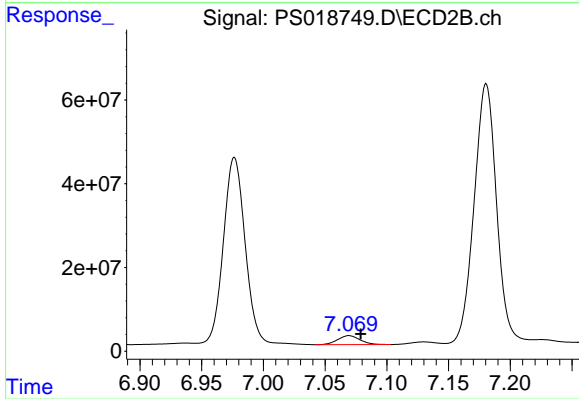
#5 DICAMBA

R.T.: 6.977 min
 Delta R.T.: -0.003 min
 Response: 553265473
 Conc: 185.75 ng/ml



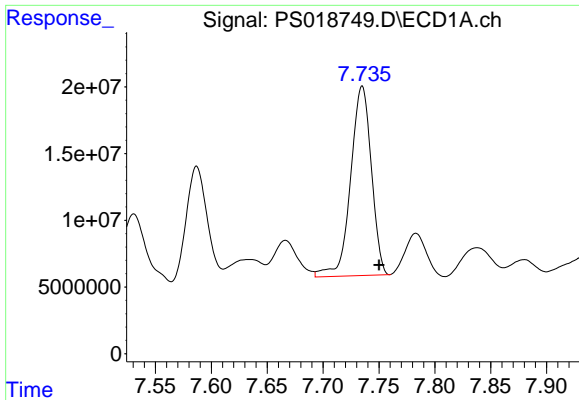
#6 MCPP

R.T.: 7.587 min
 Delta R.T.: -0.014 min
 Response: 111356102
 Conc: 13.12 ug/ml



#6 MCPP

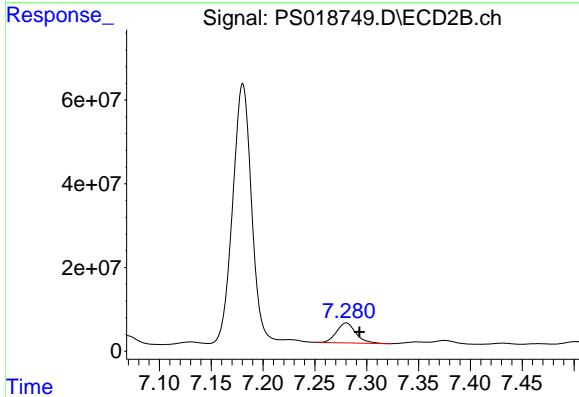
R.T.: 7.069 min
 Delta R.T.: -0.010 min
 Response: 26606809
 Conc: 10.87 ug/ml



#7 MCPA

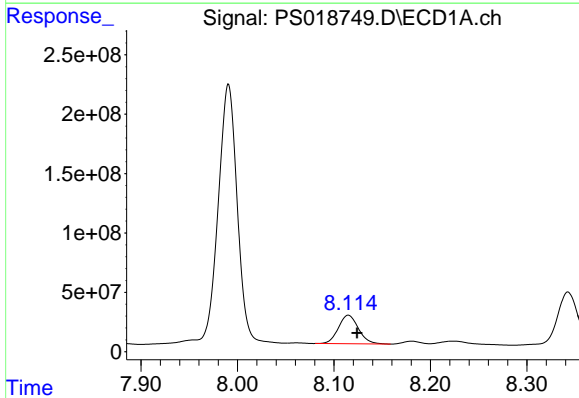
R.T.: 7.735 min
 Delta R.T.: -0.015 min
 Response: 183251249
 Conc: 15.15 ug/ml

Instrument :
 ECD_S
 ClientSampleId :



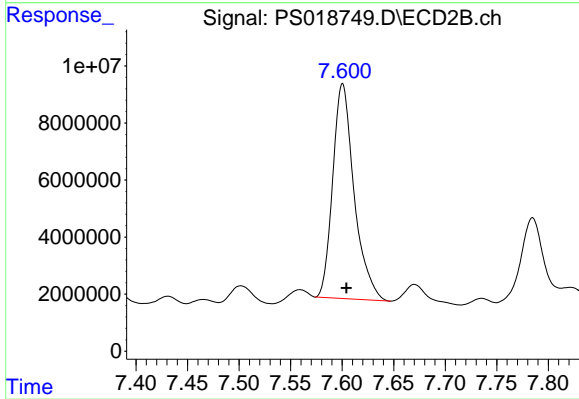
#7 MCPA

R.T.: 7.280 min
 Delta R.T.: -0.013 min
 Response: 61212309
 Conc: 17.53 ug/ml



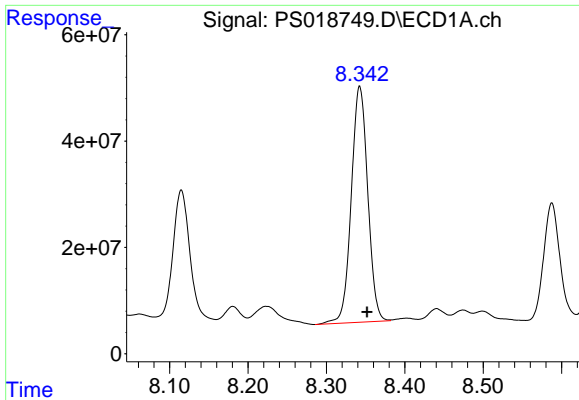
#8 DICHLORPROP

R.T.: 8.115 min
 Delta R.T.: -0.009 min
 Response: 348999050
 Conc: 126.71 ng/ml



#8 DICHLORPROP

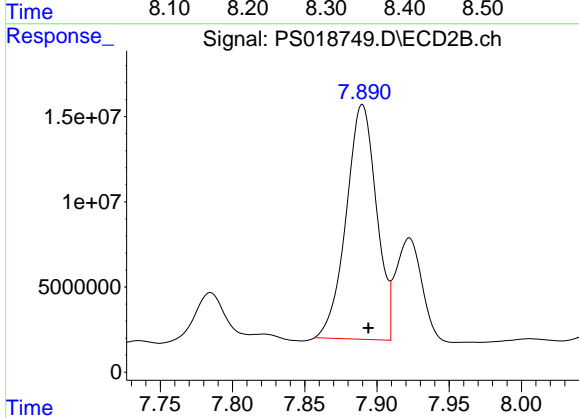
R.T.: 7.600 min
 Delta R.T.: -0.004 min
 Response: 108916643
 Conc: 137.59 ng/ml



#9 2,4-D

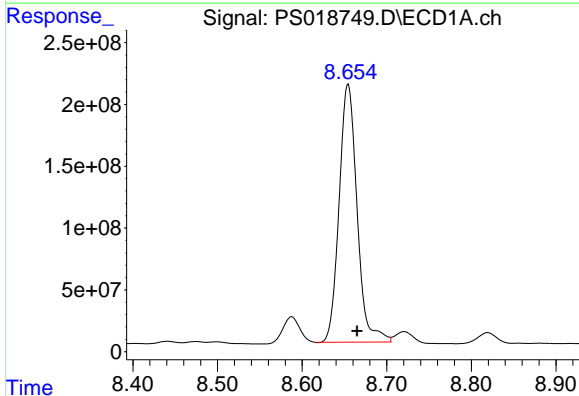
R.T.: 8.343 min
 Delta R.T.: -0.009 min
 Response: 648749416
 Conc: 193.62 ng/ml

Instrument :
 ECD_S
 ClientSampleId :



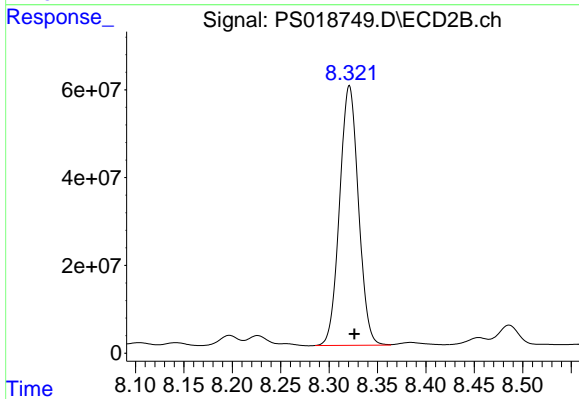
#9 2,4-D

R.T.: 7.890 min
 Delta R.T.: -0.004 min
 Response: 201092550
 Conc: 214.84 ng/ml



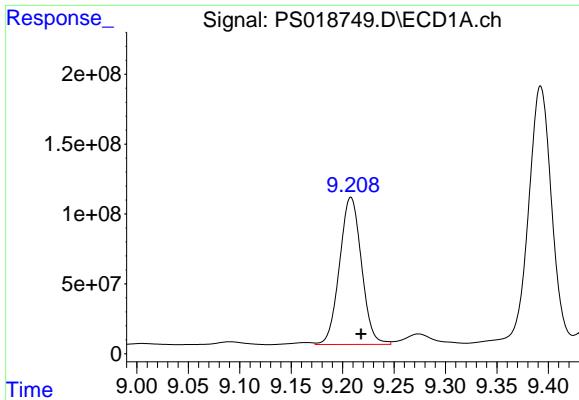
#10 Pentachlorophenol

R.T.: 8.654 min
 Delta R.T.: -0.011 min
 Response: 3078501406
 Conc: 85.04 ng/ml



#10 Pentachlorophenol

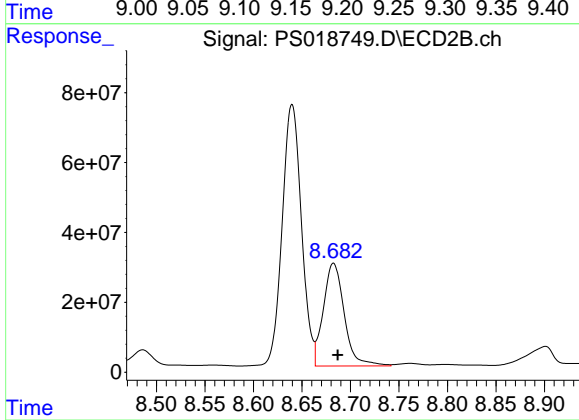
R.T.: 8.321 min
 Delta R.T.: -0.005 min
 Response: 801341509
 Conc: 81.60 ng/ml



#11 2,4,5-TP (SILVEX)

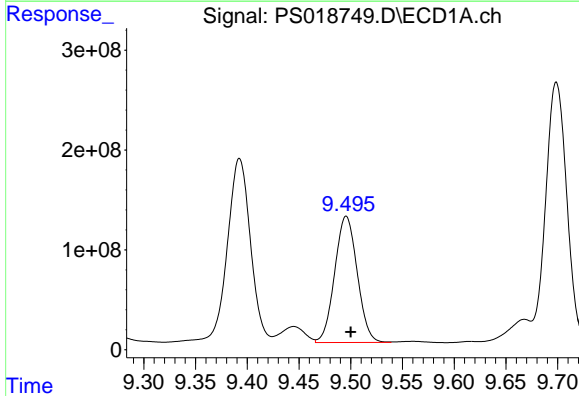
R.T.: 9.208 min
 Delta R.T.: -0.010 min
 Response: 1563500490
 Conc: 102.81 ng/ml

Instrument :
 ECD_S
 ClientSampleId :



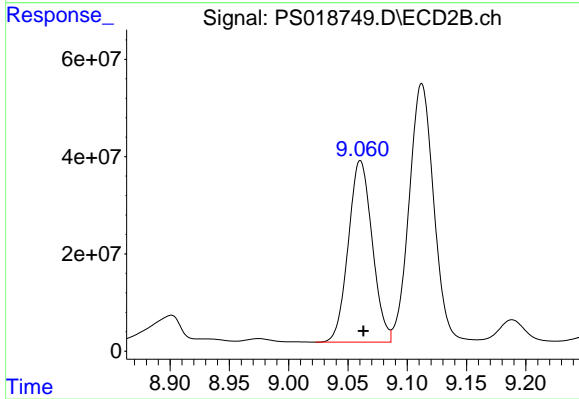
#11 2,4,5-TP (SILVEX)

R.T.: 8.683 min
 Delta R.T.: -0.004 min
 Response: 441473519
 Conc: 101.21 ng/ml



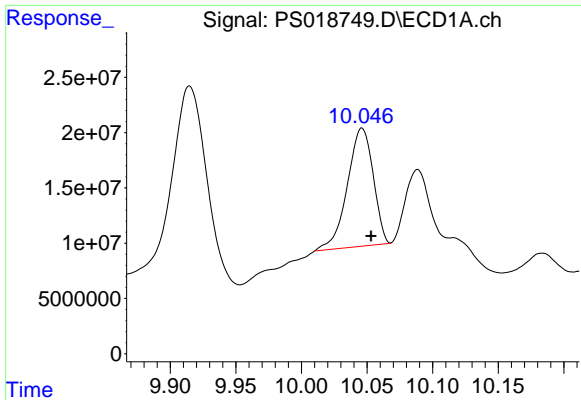
#12 2,4,5-T

R.T.: 9.496 min
 Delta R.T.: -0.004 min
 Response: 1920392138
 Conc: 128.55 ng/ml



#12 2,4,5-T

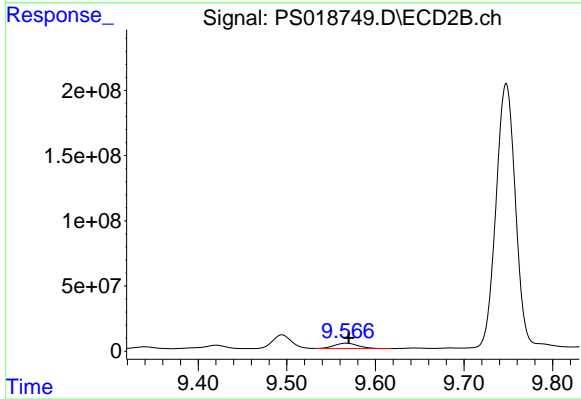
R.T.: 9.060 min
 Delta R.T.: -0.003 min
 Response: 523197674
 Conc: 126.31 ng/ml



#13 2,4-DB

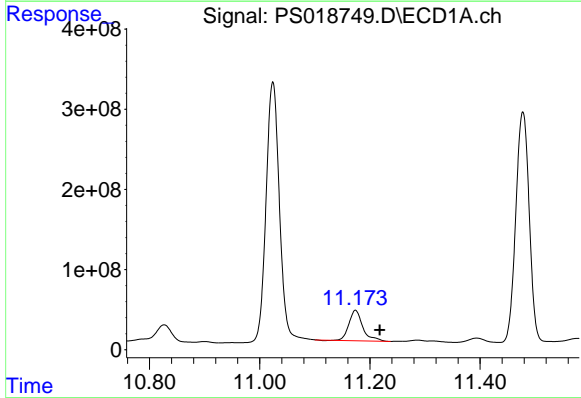
R.T.: 10.046 min
 Delta R.T.: -0.007 min
 Response: 146138232
 Conc: 53.42 ng/ml

Instrument :
 ECD_S
 ClientSampleId :



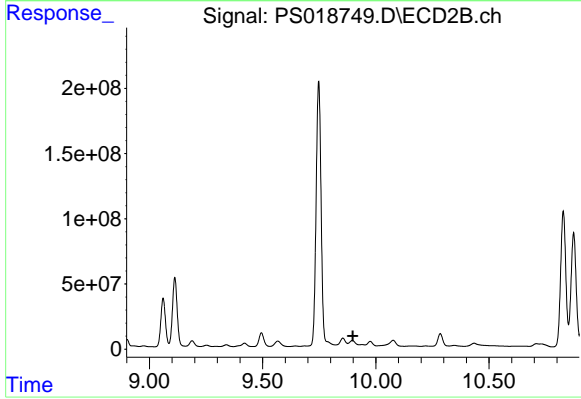
#13 2,4-DB

R.T.: 9.567 min
 Delta R.T.: -0.003 min
 Response: 77301404
 Conc: 136.15 ng/ml



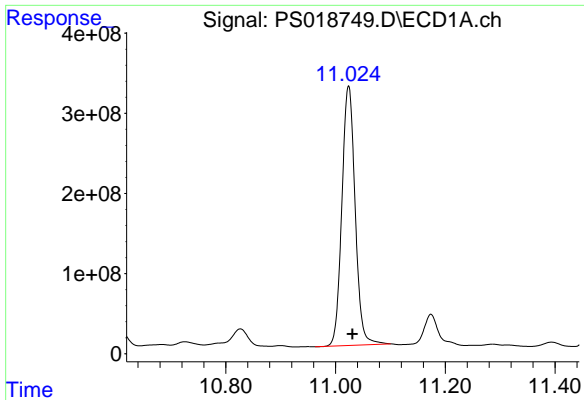
#14 DINOSEB

R.T.: 11.174 min
 Delta R.T.: -0.044 min
 Response: 661387667
 Conc: 61.85 ng/ml



#14 DINOSEB

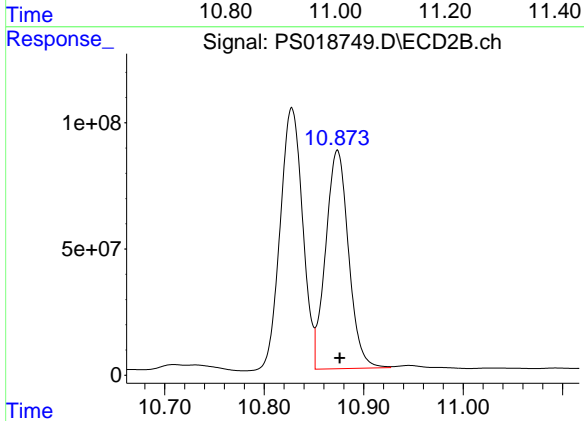
R.T.: 9.896 min
 Delta R.T.: -0.003 min
 Response: -7983556
 Conc: N.D.



#15 Picloram

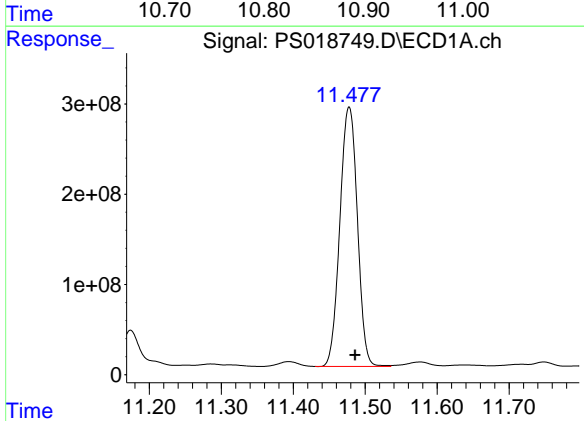
R.T.: 11.024 min
 Delta R.T.: -0.007 min
 Response: 5437233800
 Conc: 264.51 ng/ml

Instrument :
 ECD_S
 ClientSampleId :



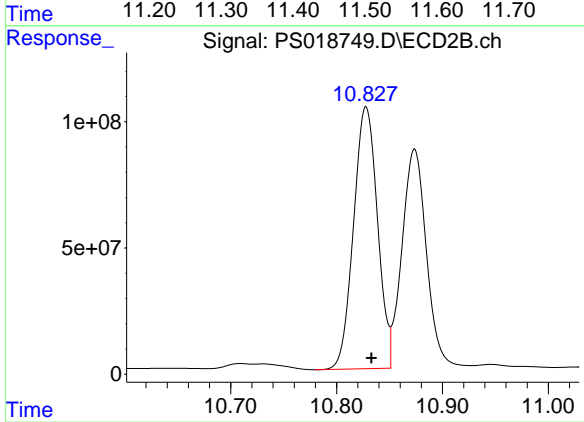
#15 Picloram

R.T.: 10.874 min
 Delta R.T.: -0.002 min
 Response: 1386696199
 Conc: 260.85 ng/ml



#16 DCPA

R.T.: 11.478 min
 Delta R.T.: -0.008 min
 Response: 4859016886
 Conc: 271.59 ng/ml



#16 DCPA

R.T.: 10.828 min
 Delta R.T.: -0.005 min
 Response: 1629262757
 Conc: 309.79 ng/ml