

Data Path : Z:\pestpcbsrv\HPCHEM1\ECD_S\Data\PS032620\
 Data File : PS009433.D
 Signal(s) : Signal #1: ECD1A.ch Signal #2: ECD2B.ch
 Acq On : 26 Mar 2020 11:58
 Operator : DD\AJ
 Sample : HEXANE
 Misc :
 ALS Vial : 1 Sample Multiplier: 1

Instrument :
 ECD_S
 ClientSampleId :

Integration File signal 1: autoint1.e
 Integration File signal 2: autoint2.e
 Quant Time: Mar 26 13:39:44 2020
 Quant Method : Z:\pestpcbsrv\HPCHEM1\ECD_S\Method\PS031120.M
 Quant Title : 8080.M
 QLast Update : Thu Mar 12 07:13:24 2020
 Response via : Initial Calibration
 Integrator: ChemStation

Volume Inj. : 2 µl
 Signal #1 Phase : Rtx-CLPesticides Signal #2 Phase: Rtx-CLPesticides2
 Signal #1 Info : 30M x 0.32mm x0.5 Signal #2 Info : 30M x 0.32mm x 0.25µm

Compound	RT#1	RT#2	Resp#1	Resp#2	ng/ml	ng/ml

System Monitoring Compounds						
Target Compounds						
15) T Picloram	11.041	11.021	9929956	15752678	3.272	3.868
16) T DCPA	0.000	11.021	0	15752678	N.D.	4.067

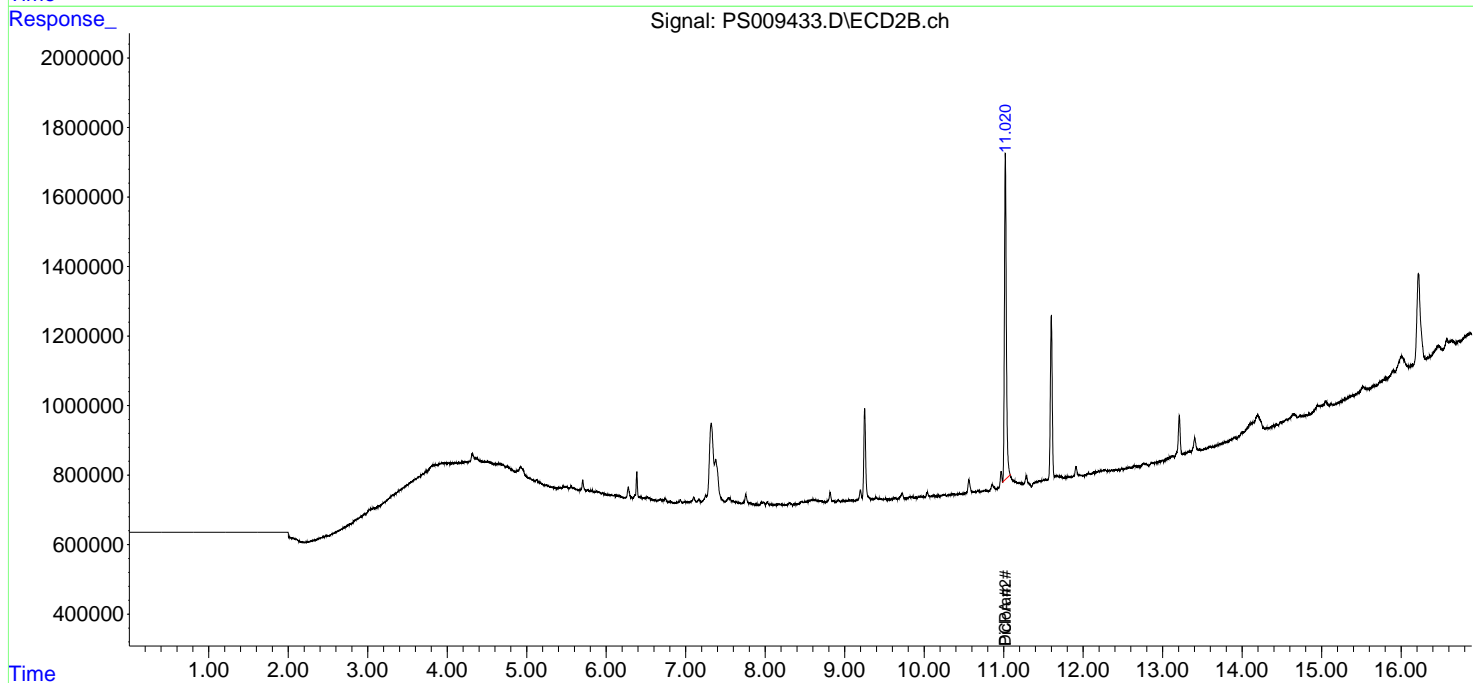
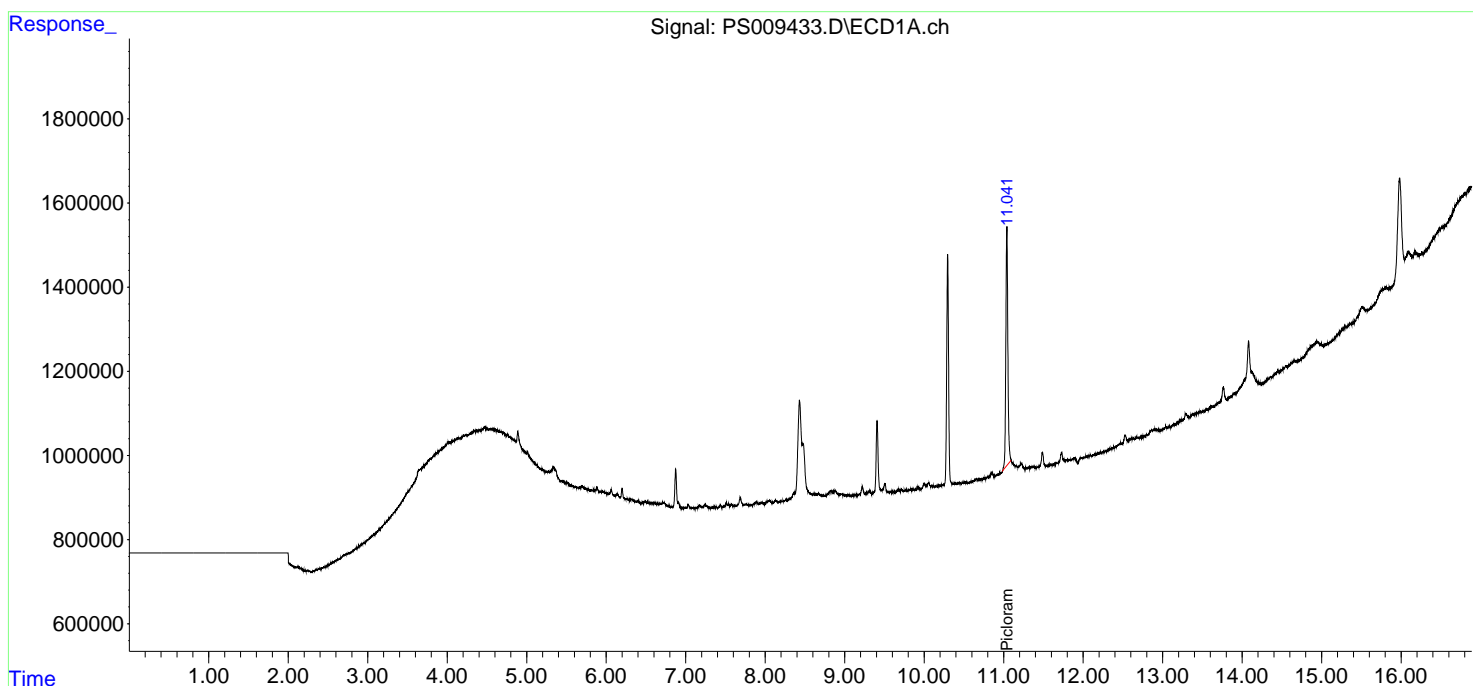
(f)=RT Delta > 1/2 Window (#)=Amounts differ by > 25% (m)=manual int.

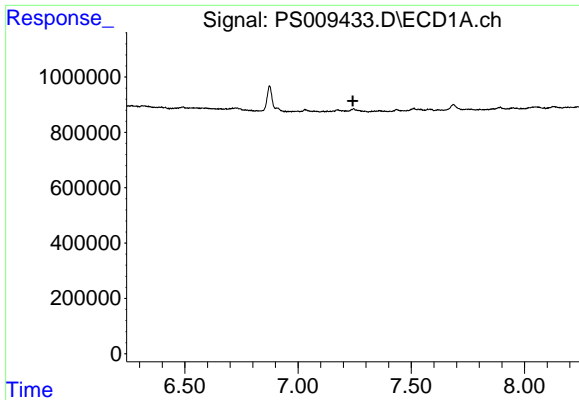
Data Path : Z:\pestpcbsrv\HPCHEM1\ECD_S\Data\PS032620\
 Data File : PS009433.D
 Signal(s) : Signal #1: ECD1A.ch Signal #2: ECD2B.ch
 Acq On : 26 Mar 2020 11:58
 Operator : DD\AJ
 Sample : HEXANE
 Misc :
 ALS Vial : 1 Sample Multiplier: 1

Instrument :
 ECD_S
 ClientSampled :

Integration File signal 1: autoint1.e
 Integration File signal 2: autoint2.e
 Quant Time: Mar 26 13:39:44 2020
 Quant Method : Z:\pestpcbsrv\HPCHEM1\ECD_S\Method\PS031120.M
 Quant Title : 8080.M
 QLast Update : Thu Mar 12 07:13:24 2020
 Response via : Initial Calibration
 Integrator: ChemStation

Volume Inj. : 2 µl
 Signal #1 Phase : Rtx-CLPesticides Signal #2 Phase: Rtx-CLPesticides2
 Signal #1 Info : 30M x 0.32mm x 0.5 Signal #2 Info : 30M x 0.32mm x 0.25µm

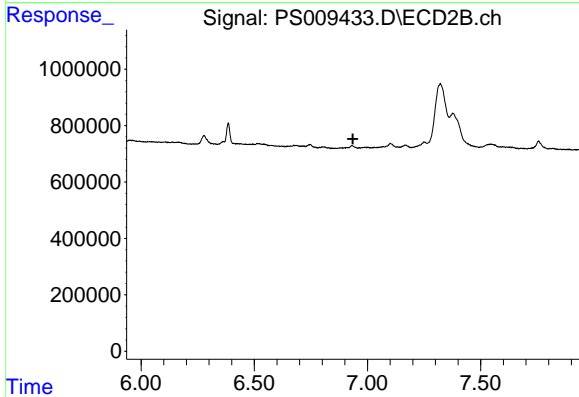




#4 2,4-DCAA

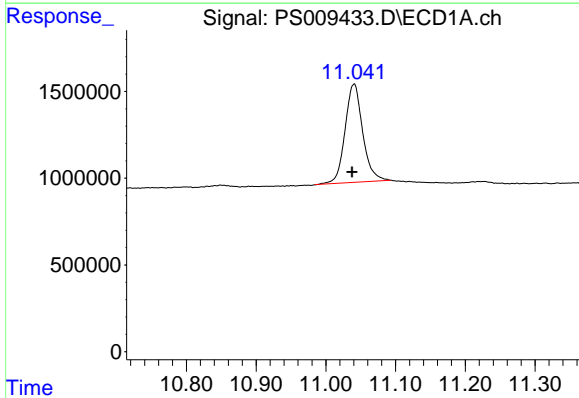
R.T.: 0.000 min
 Exp R.T.: 7.242 min
 Response: 0
 Conc: N.D.

Instrument :
 ECD_S
 ClientSampleId :



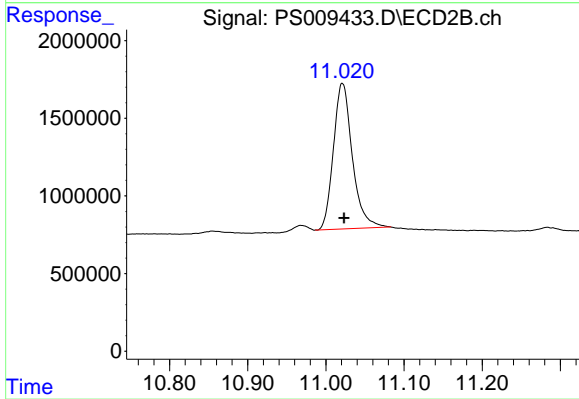
#4 2,4-DCAA

R.T.: 0.000 min
 Exp R.T.: 6.935 min
 Response: 0
 Conc: N.D.



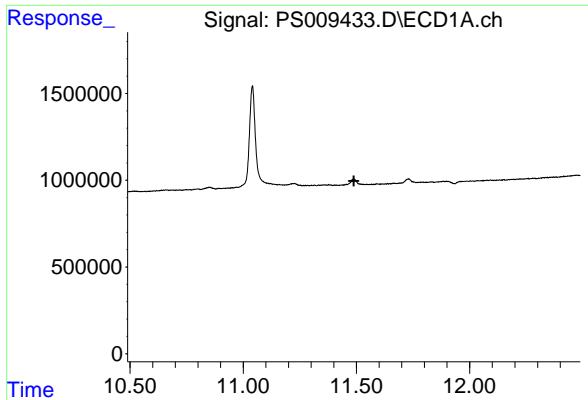
#15 Picloram

R.T.: 11.041 min
 Delta R.T.: 0.003 min
 Response: 9929956
 Conc: 3.27 ng/ml



#15 Picloram

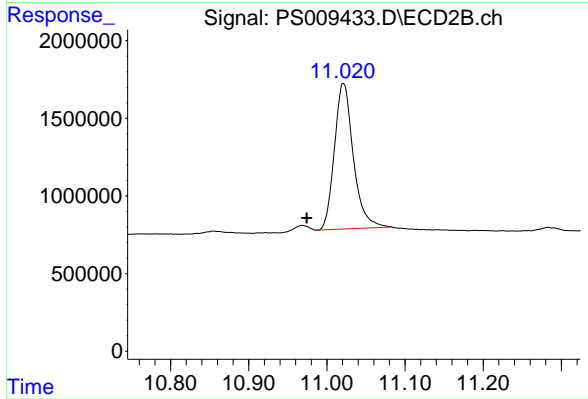
R.T.: 11.021 min
 Delta R.T.: -0.002 min
 Response: 15752678
 Conc: 3.87 ng/ml



#16 DCPA

R.T.: 0.000 min
Exp R.T.: 11.489 min
Response: 0
Conc: N.D.

Instrument :
ECD_S
ClientSampleId :



#16 DCPA

R.T.: 11.021 min
Delta R.T.: 0.047 min
Response: 15752678
Conc: 4.07 ng/ml