

Data Path : Z:\pestpcbsrv\HPCHEM1\ECD_S\Data\PS032620\
 Data File : PS009436.D
 Signal(s) : Signal #1: ECD1A.ch Signal #2: ECD2B.ch
 Acq On : 26 Mar 2020 13:45
 Operator : DD\AJ
 Sample : L2019-01
 Misc :
 ALS Vial : 4 Sample Multiplier: 1

Instrument :
 ECD_S
 ClientSampleId :

Integration File signal 1: autoint1.e
 Integration File signal 2: autoint2.e
 Quant Time: Mar 26 14:18:07 2020
 Quant Method : Z:\pestpcbsrv\HPCHEM1\ECD_S\Method\PS031120.M
 Quant Title : 8080.M
 QLast Update : Thu Mar 12 07:13:24 2020
 Response via : Initial Calibration
 Integrator: ChemStation

Volume Inj. : 2 µl
 Signal #1 Phase : Rtx-CLPesticides Signal #2 Phase: Rtx-CLPesticides2
 Signal #1 Info : 30M x 0.32mm x0.5 Signal #2 Info : 30M x 0.32mm x 0.25µm

Compound	RT#1	RT#2	Resp#1	Resp#2	ng/ml	ng/ml

System Monitoring Compounds						
4) S 2,4-DCAA	7.246	6.930	235.0E6	173.9E6	424.867	316.638 #
Target Compounds						
2) T 3,5-DICHL...	0.000	6.106	0	72054400	N.D.	88.594
3) T 4-Nitroph...	7.080	6.534	10851255	6391185	45.457	20.086 #
5) T DICAMBA	7.367	0.000	19276800	0	9.058	N.D. #
7) T MCPA	7.798	7.398	65986406	39879877	21.666	14.778 #
8) T DICHLORPROP	0.000	7.750	0	29003697	N.D.	52.276
11) T 2,4,5-TP ...	0.000	8.785	0	39432389	N.D.	13.227
12) T 2,4,5-T	9.454	9.180	22887367	93686125	8.997	31.735 #
13) T 2,4-DB	10.002	0.000	25357972	0	73.299	N.D. #
14) T DINOSEB	11.192	10.051	19413177	39228372	9.497	17.860 #
15) T Picloram	11.042	11.019	117.7E6	153.5E6	38.790	37.695
16) T DCPA	0.000	11.019	0	153.5E6	N.D.	39.634

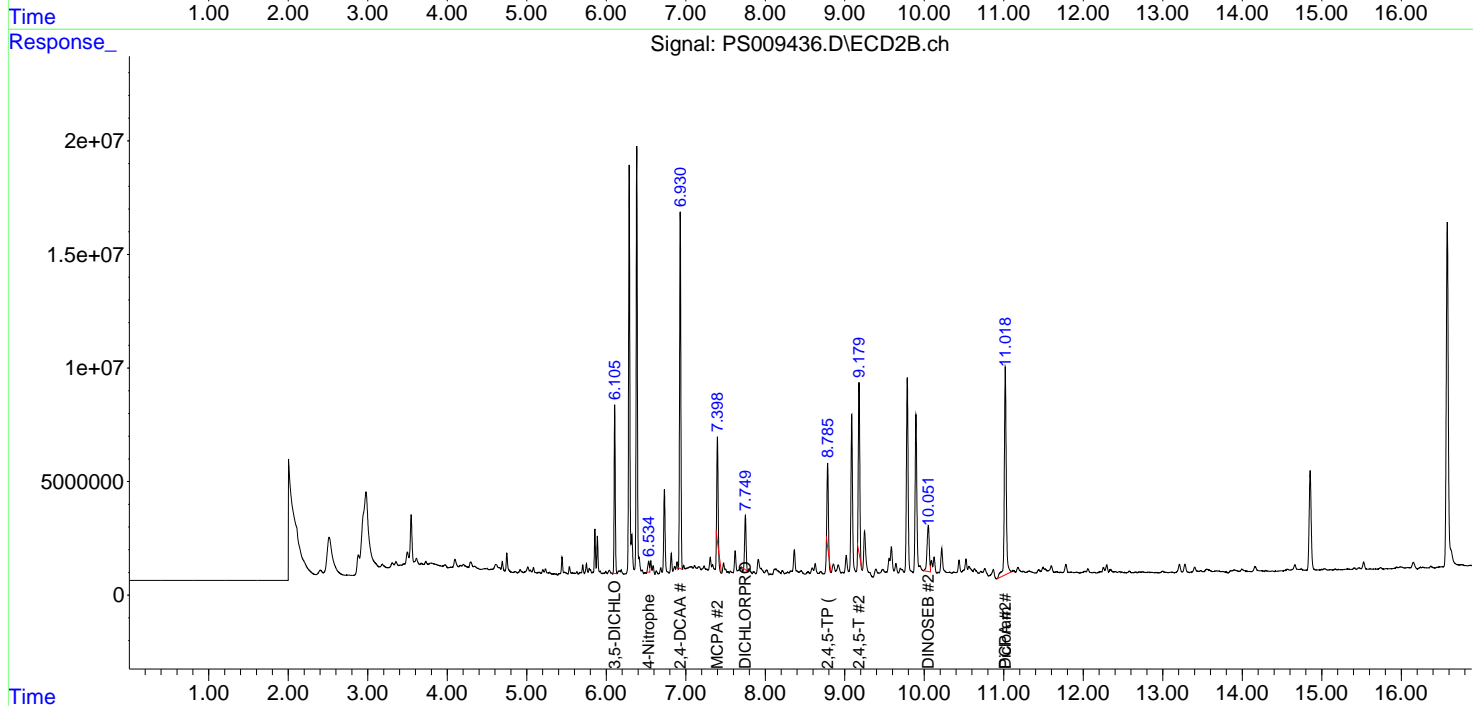
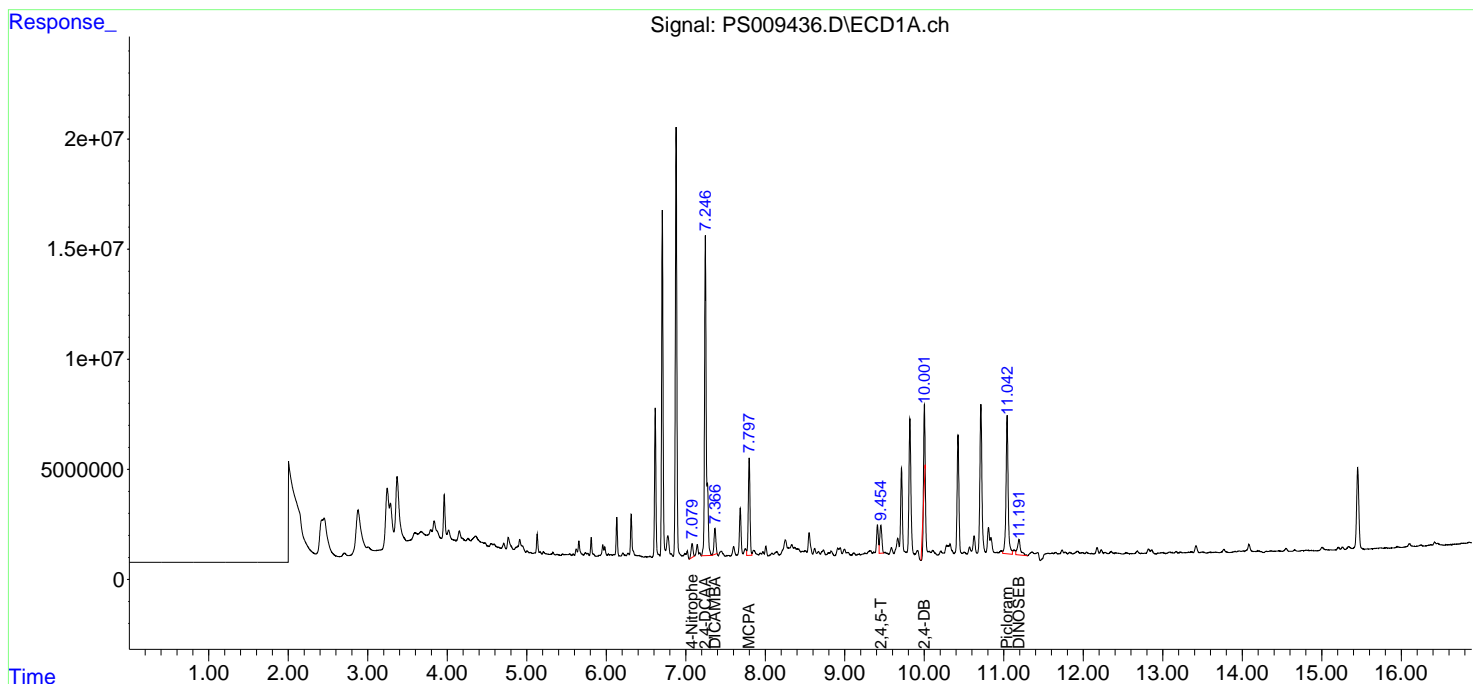
(f)=RT Delta > 1/2 Window (#)=Amounts differ by > 25% (m)=manual int.

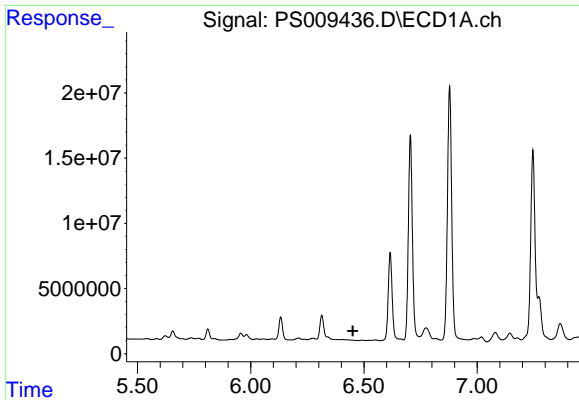
Data Path : Z:\pestpcbsrv\HPCHEM1\ECD_S\Data\PS032620\
 Data File : PS009436.D
 Signal(s) : Signal #1: ECD1A.ch Signal #2: ECD2B.ch
 Acq On : 26 Mar 2020 13:45
 Operator : DD\AJ
 Sample : L2019-01
 Misc :
 ALS Vial : 4 Sample Multiplier: 1

Instrument :
 ECD_S
 ClientSampled :

Integration File signal 1: autoint1.e
 Integration File signal 2: autoint2.e
 Quant Time: Mar 26 14:18:07 2020
 Quant Method : Z:\pestpcbsrv\HPCHEM1\ECD_S\Method\PS031120.M
 Quant Title : 8080.M
 QLast Update : Thu Mar 12 07:13:24 2020
 Response via : Initial Calibration
 Integrator: ChemStation

Volume Inj. : 2 µl
 Signal #1 Phase : Rtx-CLPesticides Signal #2 Phase: Rtx-CLPesticides2
 Signal #1 Info : 30M x 0.32mm x0.5 Signal #2 Info : 30M x 0.32mm x 0.25µm

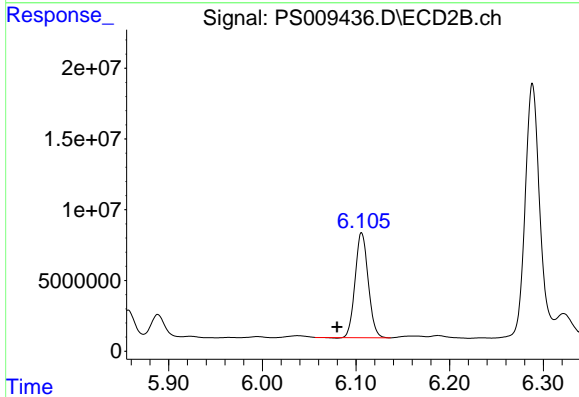




#2 3,5-DICHLOROBENZOIC ACID

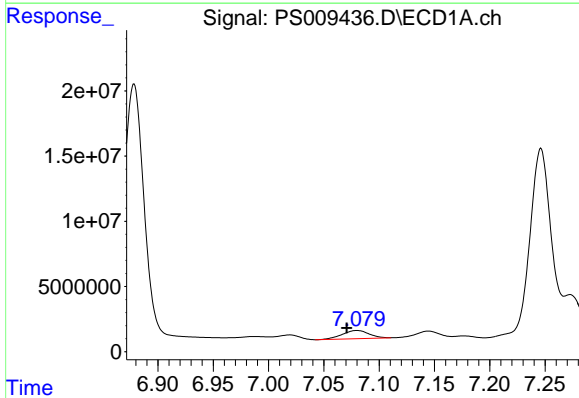
R.T.: 0.000 min
 Exp R.T.: 6.451 min
 Response: 0
 Conc: N.D.

Instrument :
 ECD_S
 ClientSampled :



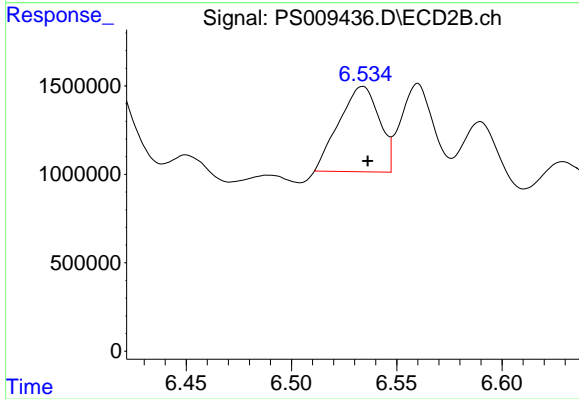
#2 3,5-DICHLOROBENZOIC ACID

R.T.: 6.106 min
 Delta R.T.: 0.026 min
 Response: 72054400
 Conc: 88.59 ng/ml



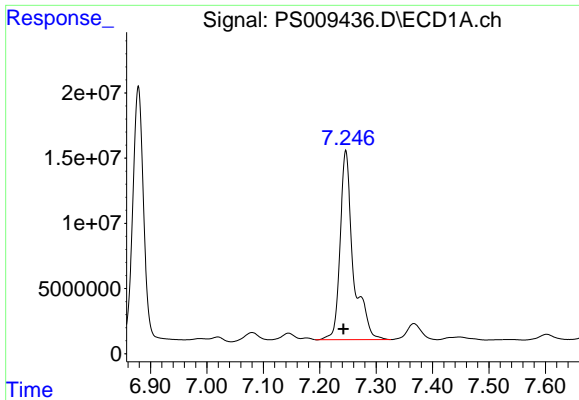
#3 4-Nitrophenol

R.T.: 7.080 min
 Delta R.T.: 0.009 min
 Response: 10851255
 Conc: 45.46 ng/ml



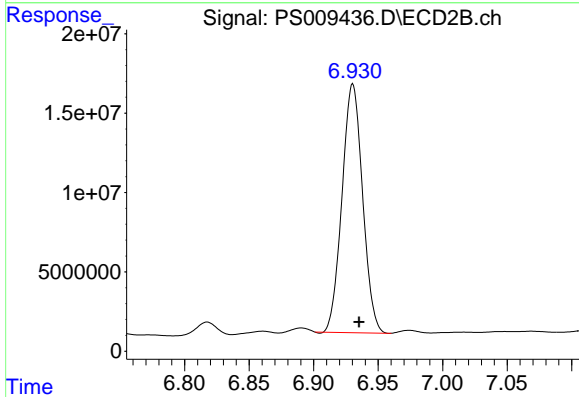
#3 4-Nitrophenol

R.T.: 6.534 min
 Delta R.T.: -0.003 min
 Response: 6391185
 Conc: 20.09 ng/ml

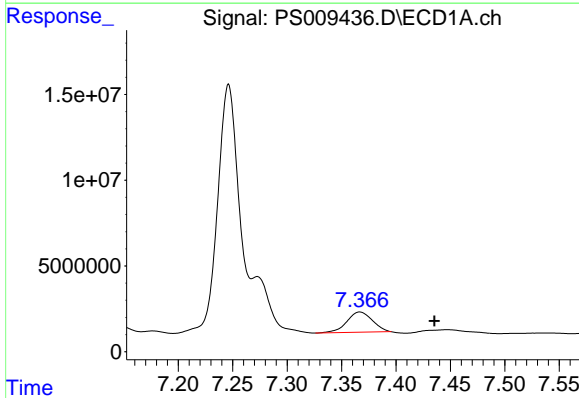


#4 2,4-DCAA
 R.T.: 7.246 min
 Delta R.T.: 0.004 min
 Response: 235023492
 Conc: 424.87 ng/ml

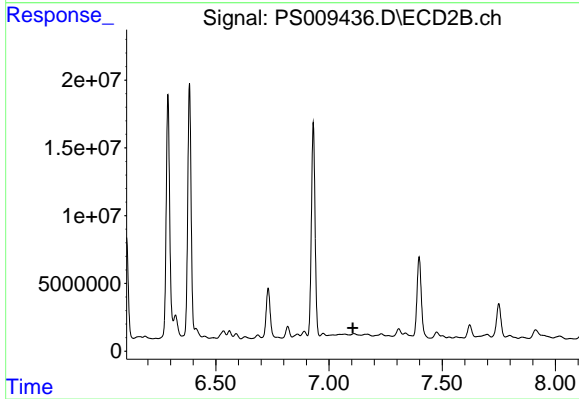
Instrument :
 ECD_S
 ClientSampled :



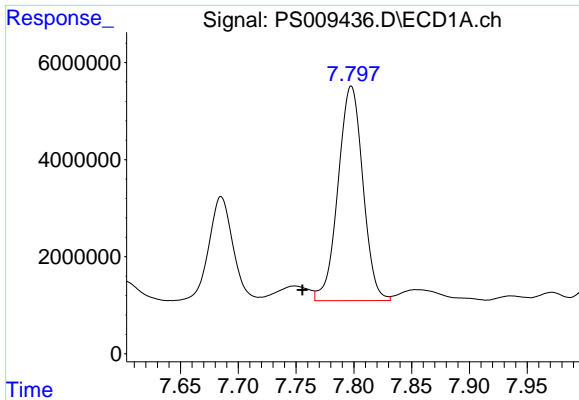
#4 2,4-DCAA
 R.T.: 6.930 min
 Delta R.T.: -0.005 min
 Response: 173897116
 Conc: 316.64 ng/ml



#5 DICAMBA
 R.T.: 7.367 min
 Delta R.T.: -0.068 min
 Response: 19276800
 Conc: 9.06 ng/ml



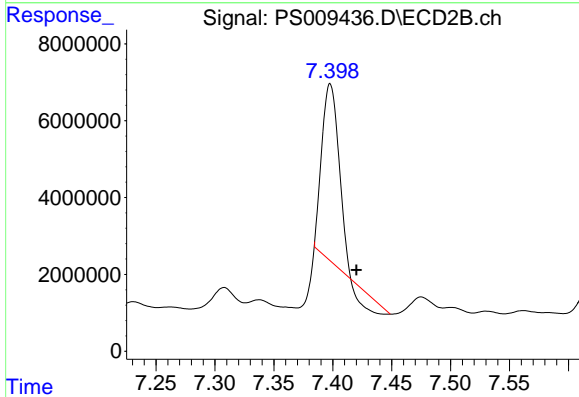
#5 DICAMBA
 R.T.: 0.000 min
 Exp R.T. : 7.106 min
 Response: 0
 Conc: N.D.



#7 MCPA

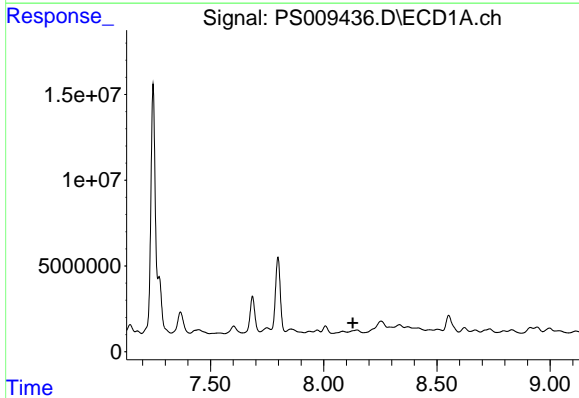
R.T.: 7.798 min
 Delta R.T.: 0.042 min
 Response: 65986406
 Conc: 21.67 ug/ml

Instrument :
 ECD_S
 ClientSampleId :



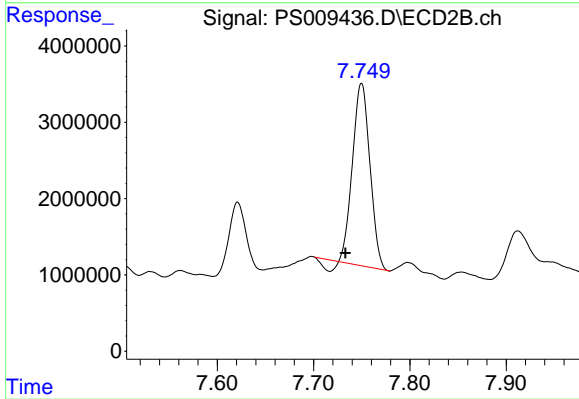
#7 MCPA

R.T.: 7.398 min
 Delta R.T.: -0.022 min
 Response: 39879877
 Conc: 14.78 ug/ml



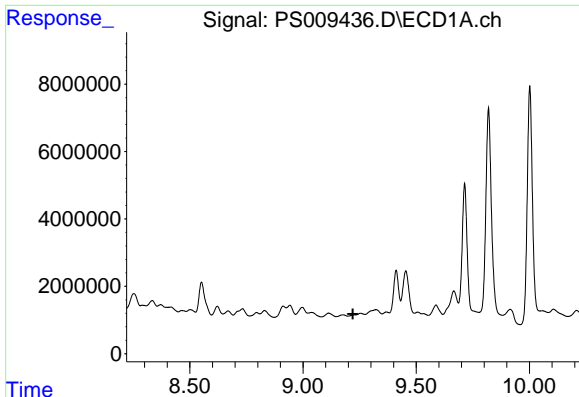
#8 DICHLORPROP

R.T.: 0.000 min
 Exp R.T. : 8.129 min
 Response: 0
 Conc: N.D.



#8 DICHLORPROP

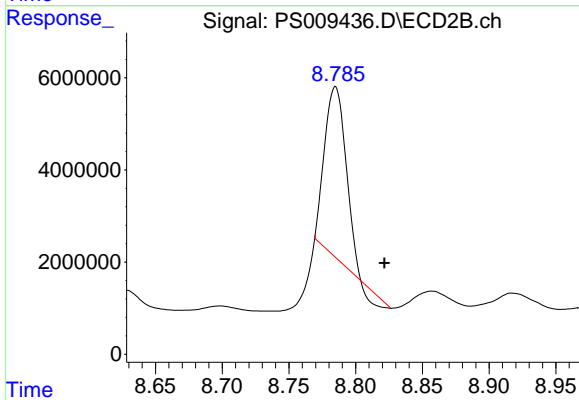
R.T.: 7.750 min
 Delta R.T.: 0.017 min
 Response: 29003697
 Conc: 52.28 ng/ml



#11 2,4,5-TP (SILVEX)

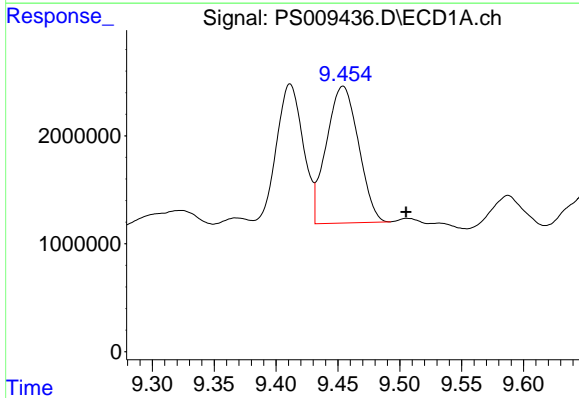
R.T.: 0.000 min
Exp R.T.: 9.221 min
Response: 0
Conc: N.D.

Instrument :
ECD_S
ClientSampled :



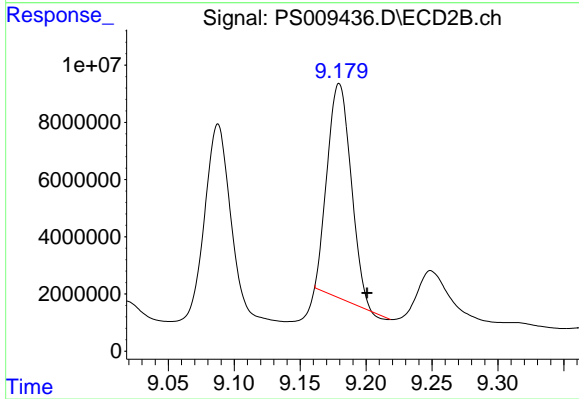
#11 2,4,5-TP (SILVEX)

R.T.: 8.785 min
Delta R.T.: -0.037 min
Response: 39432389
Conc: 13.23 ng/ml



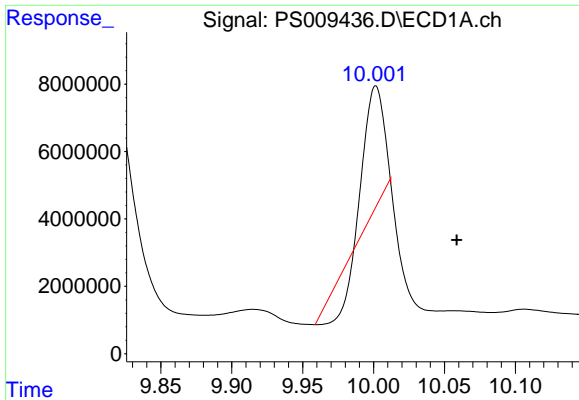
#12 2,4,5-T

R.T.: 9.454 min
Delta R.T.: -0.051 min
Response: 22887367
Conc: 9.00 ng/ml



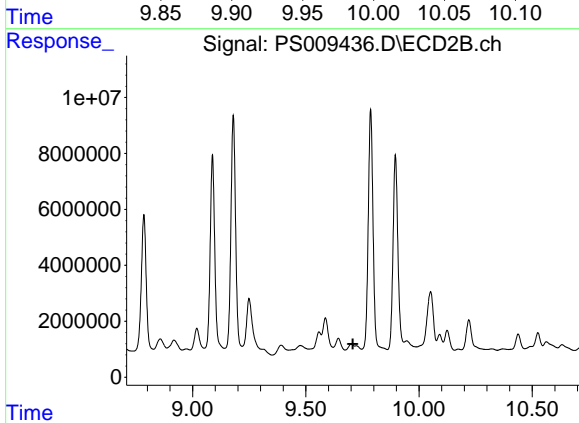
#12 2,4,5-T

R.T.: 9.180 min
Delta R.T.: -0.021 min
Response: 93686125
Conc: 31.73 ng/ml

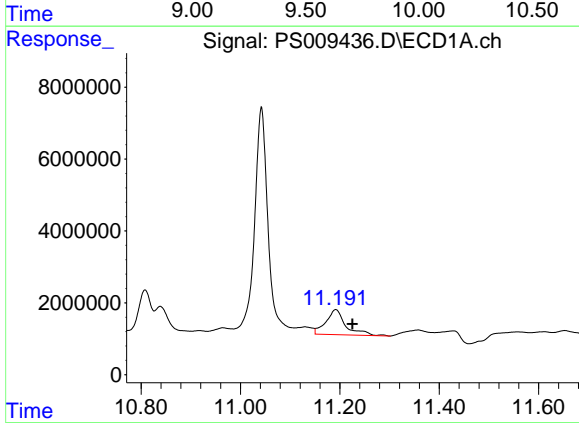


#13 2,4-DB
 R.T.: 10.002 min
 Delta R.T.: -0.057 min
 Response: 25357972
 Conc: 73.30 ng/ml

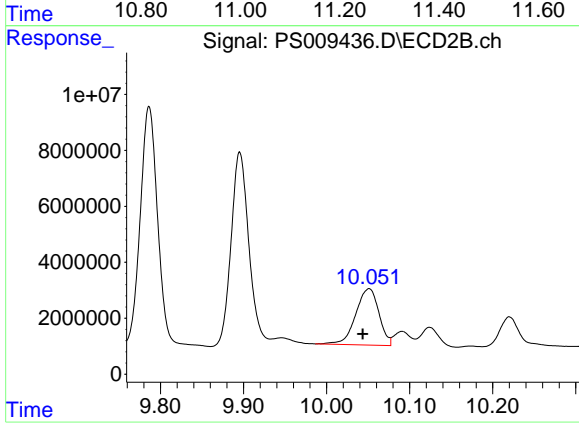
Instrument :
 ECD_S
 ClientSampled :



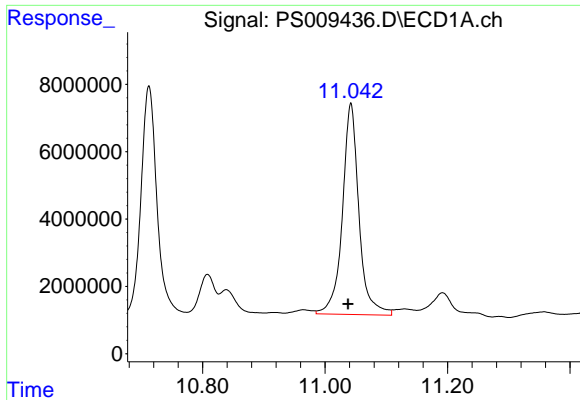
#13 2,4-DB
 R.T.: 0.000 min
 Exp R.T. : 9.708 min
 Response: 0
 Conc: N.D.



#14 DINOSEB
 R.T.: 11.192 min
 Delta R.T.: -0.033 min
 Response: 19413177
 Conc: 9.50 ng/ml

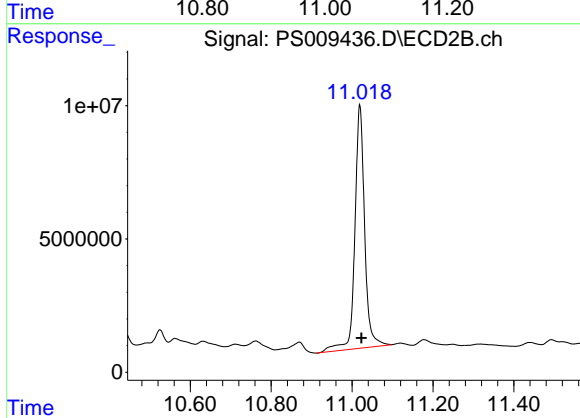


#14 DINOSEB
 R.T.: 10.051 min
 Delta R.T.: 0.007 min
 Response: 39228372
 Conc: 17.86 ng/ml

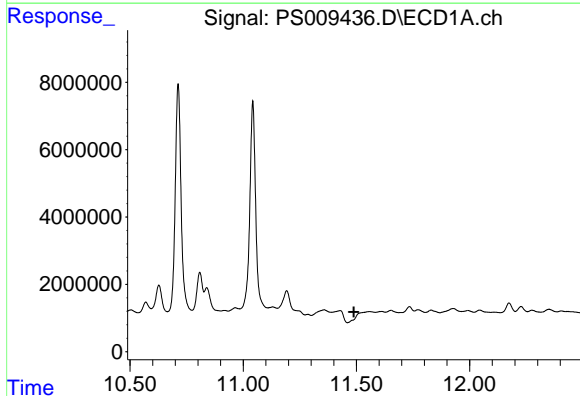


#15 Picloram
 R.T.: 11.042 min
 Delta R.T.: 0.005 min
 Response: 117724786
 Conc: 38.79 ng/ml

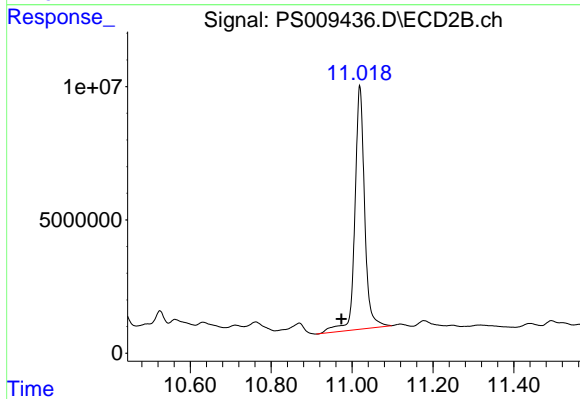
Instrument :
 ECD_S
 ClientSampleId :



#15 Picloram
 R.T.: 11.019 min
 Delta R.T.: -0.004 min
 Response: 153502076
 Conc: 37.70 ng/ml



#16 DCPA
 R.T.: 0.000 min
 Exp R.T. : 11.489 min
 Response: 0
 Conc: N.D.



#16 DCPA
 R.T.: 11.019 min
 Delta R.T.: 0.045 min
 Response: 153502076
 Conc: 39.63 ng/ml