

Data Path : Z:\pestpcbsrv\HPCHEM1\ECD\_S\Data\PS032620\  
 Data File : PS009453.D  
 Signal(s) : Signal #1: ECD1A.ch Signal #2: ECD2B.ch  
 Acq On : 26 Mar 2020 22:47  
 Operator : DD\AJ  
 Sample : L1754-04MSD  
 Misc :  
 ALS Vial : 19 Sample Multiplier: 1

Instrument :  
 ECD\_S  
 ClientSampleId :  
 NB-08-032420MSD

Integration File signal 1: autoint1.e  
 Integration File signal 2: autoint2.e  
 Quant Time: Mar 27 01:30:25 2020  
 Quant Method : Z:\pestpcbsrv\HPCHEM1\ECD\_S\Method\PS031120.M  
 Quant Title : 8080.M  
 QLast Update : Thu Mar 12 07:13:24 2020  
 Response via : Initial Calibration  
 Integrator: ChemStation

Volume Inj. : 2 µl  
 Signal #1 Phase : Rtx-CLPesticides Signal #2 Phase: Rtx-CLPesticides2  
 Signal #1 Info : 30M x 0.32mm x0.5 Signal #2 Info : 30M x 0.32mm x 0.25µm

	Compound	RT#1	RT#2	Resp#1	Resp#2	ng/ml	ng/ml
-----							
System Monitoring Compounds							
4) S	2,4-DCAA	7.241	6.931	295.9E6	272.1E6	534.848	495.387
Target Compounds							
1) T	Dalapon	3.046	2.630	347.5E6	292.3E6	445.597	371.183
2) T	3,5-DICHL...	6.449	6.077	453.6E6	413.0E6	600.904	507.765
3) T	4-Nitroph...	7.078	0.000	5713956	0	23.937	N.D. #
5) T	DICAMBA	7.434	7.101	1246.4E6	1168.2E6	585.663	508.890
6) T	MCP P	7.603	7.198	75680056	102.3E6	30.756	56.224 #
7) T	MCPA	7.752	7.414	138.8E6	135.9E6	45.560	50.359
8) T	DICHLORPROP	8.127	7.729	326.8E6	347.6E6	633.626	626.594
9) T	2,4-D	8.356	8.022	376.3E6	421.0E6	713.795	640.489
10) T	Pentachlo...	8.670	8.456	3986.8E6	3618.9E6	567.006	476.806
11) T	2,4,5-TP ...	9.219	8.816	1835.7E6	2083.0E6	669.682	698.737
12) T	2,4,5-T	9.504	9.195	1612.2E6	1684.3E6	633.765	570.518
13) T	2,4-DB	10.057	9.703	194.9E6	226.8E6	563.254	597.564
14) T	DINOSEB	11.223	10.039	1021.1E6	997.9E6	499.501	454.310
15) T	Picloram	11.035	11.017	1083.3E6	1274.0E6	356.929	312.867
16) T	DCPA	11.487	10.968	1467.7E6	1562.5E6	423.439	403.432
-----							

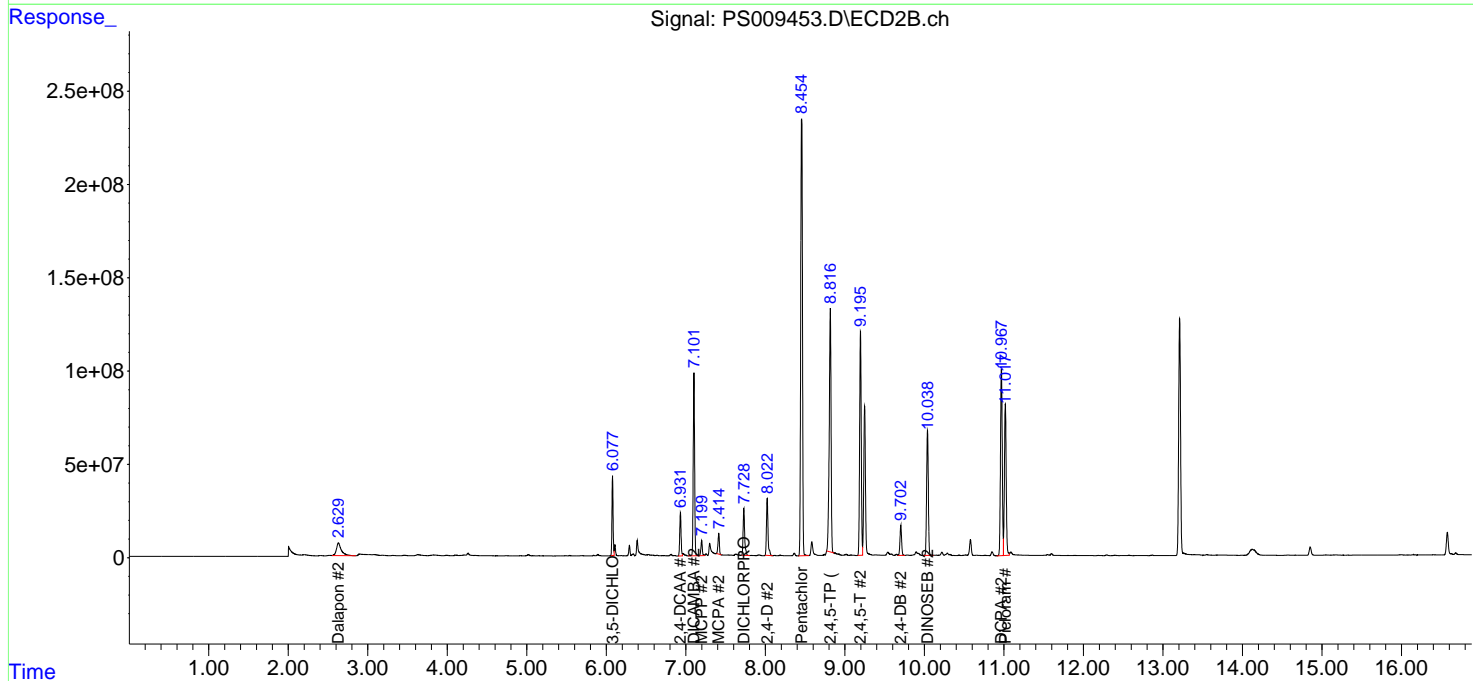
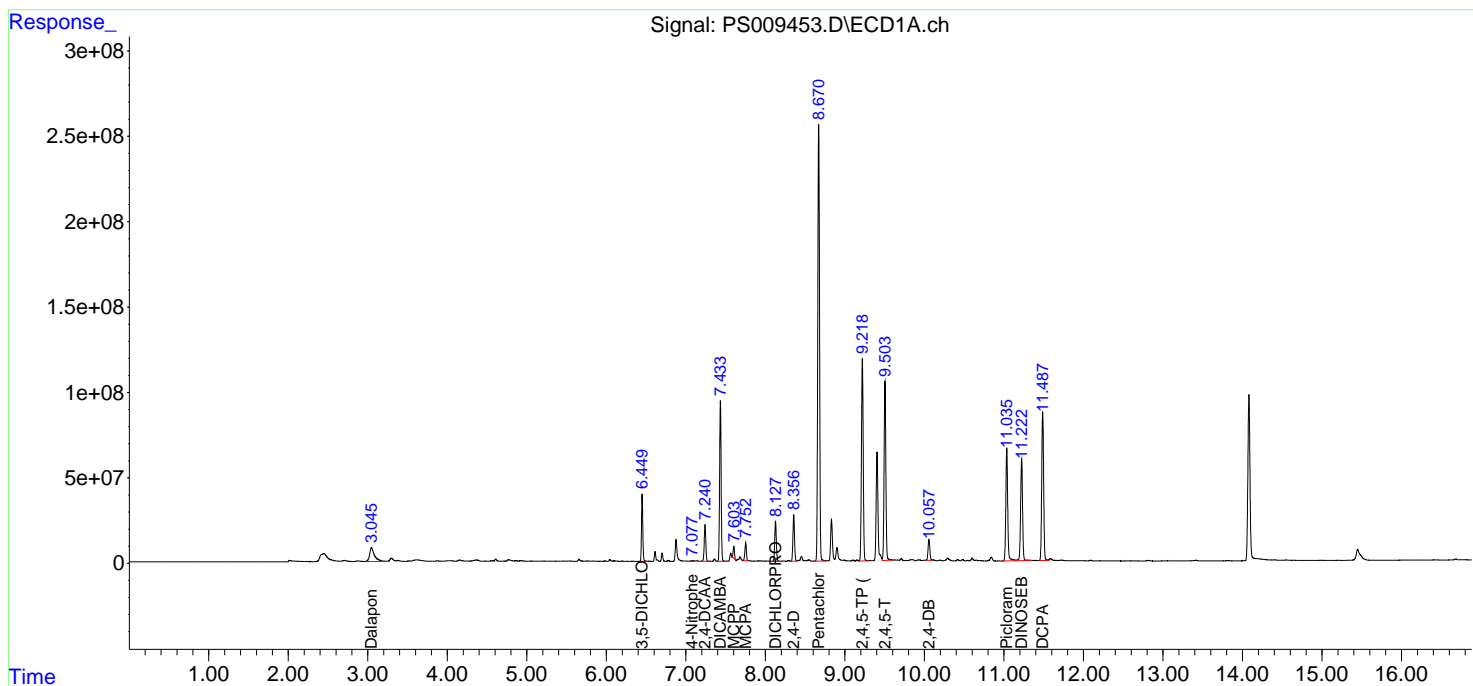
(f)=RT Delta > 1/2 Window (#)=Amounts differ by > 25% (m)=manual int.

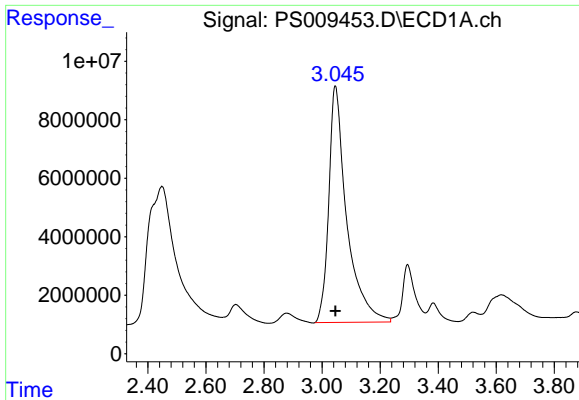
Data Path : Z:\pestpcbsrv\HPCHEM1\ECD\_S\Data\PS032620\  
 Data File : PS009453.D  
 Signal(s) : Signal #1: ECD1A.ch Signal #2: ECD2B.ch  
 Acq On : 26 Mar 2020 22:47  
 Operator : DD\AJ  
 Sample : L1754-04MSD  
 Misc :  
 ALS Vial : 19 Sample Multiplier: 1

Instrument :  
 ECD\_S  
 ClientSampleId :  
 NB-08-032420MSD

Integration File signal 1: autoint1.e  
 Integration File signal 2: autoint2.e  
 Quant Time: Mar 27 01:30:25 2020  
 Quant Method : Z:\pestpcbsrv\HPCHEM1\ECD\_S\Method\PS031120.M  
 Quant Title : 8080.M  
 QLast Update : Thu Mar 12 07:13:24 2020  
 Response via : Initial Calibration  
 Integrator: ChemStation

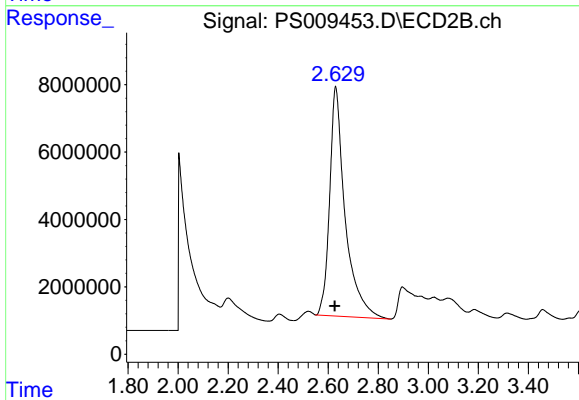
Volume Inj. : 2 µl  
 Signal #1 Phase : Rtx-CLPesticides Signal #2 Phase: Rtx-CLPesticides2  
 Signal #1 Info : 30M x 0.32mm x0.5 Signal #2 Info : 30M x 0.32mm x 0.25µm



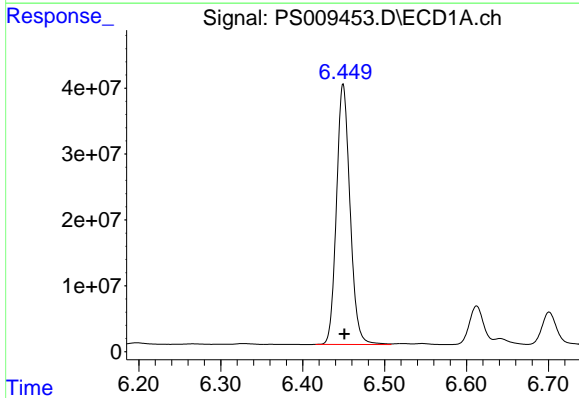


#1 Dalapon  
R.T.: 3.046 min  
Delta R.T.: 0.000 min  
Response: 347492062  
Conc: 445.60 ng/ml

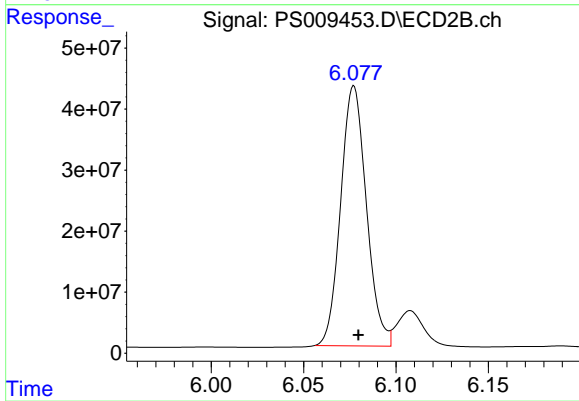
Instrument :  
ECD\_S  
ClientSampleId :  
NB-08-032420MSD



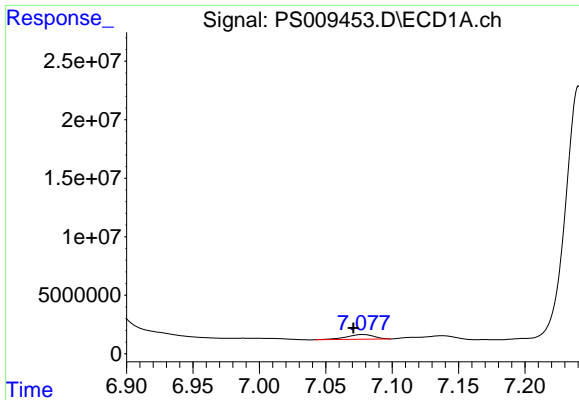
#1 Dalapon  
R.T.: 2.630 min  
Delta R.T.: 0.003 min  
Response: 292255343  
Conc: 371.18 ng/ml



#2 3,5-DICHLOROBENZOIC ACID  
R.T.: 6.449 min  
Delta R.T.: -0.001 min  
Response: 453561385  
Conc: 600.90 ng/ml



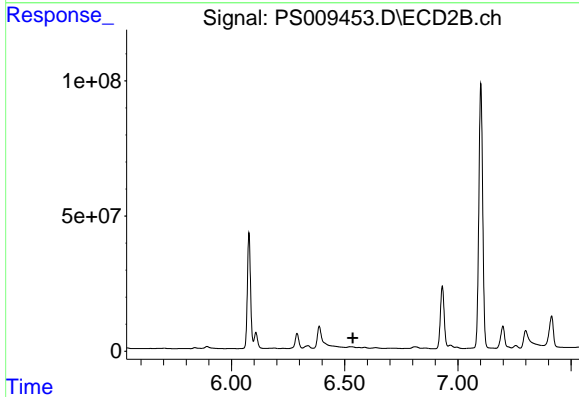
#2 3,5-DICHLOROBENZOIC ACID  
R.T.: 6.077 min  
Delta R.T.: -0.003 min  
Response: 412968832  
Conc: 507.77 ng/ml



#3 4-Nitrophenol

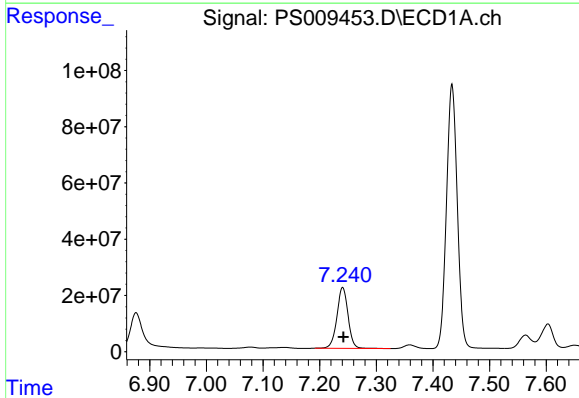
R.T.: 7.078 min  
 Delta R.T.: 0.007 min  
 Response: 5713956  
 Conc: 23.94 ng/ml

Instrument :  
 ECD\_S  
 ClientSampleId :  
 NB-08-032420MSD



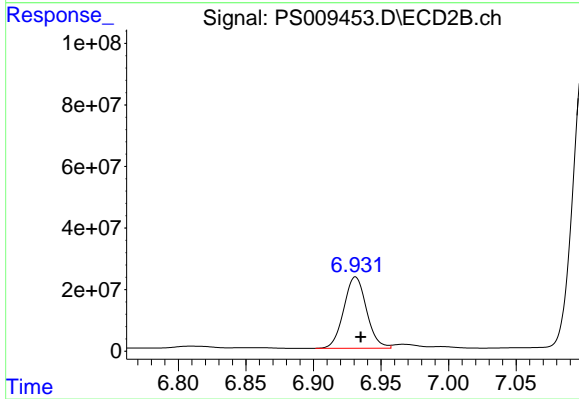
#3 4-Nitrophenol

R.T.: 0.000 min  
 Exp R.T. : 6.536 min  
 Response: 0  
 Conc: N.D.



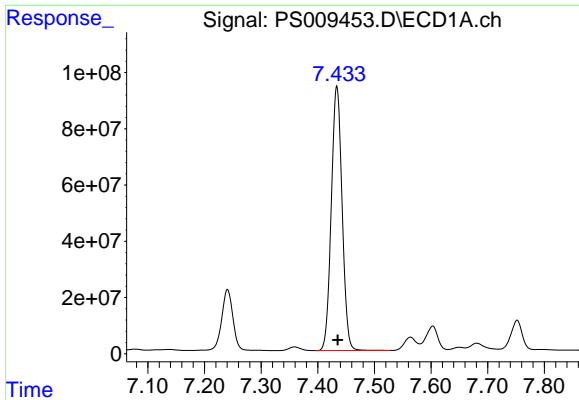
#4 2,4-DCAA

R.T.: 7.241 min  
 Delta R.T.: -0.001 min  
 Response: 295861677  
 Conc: 534.85 ng/ml



#4 2,4-DCAA

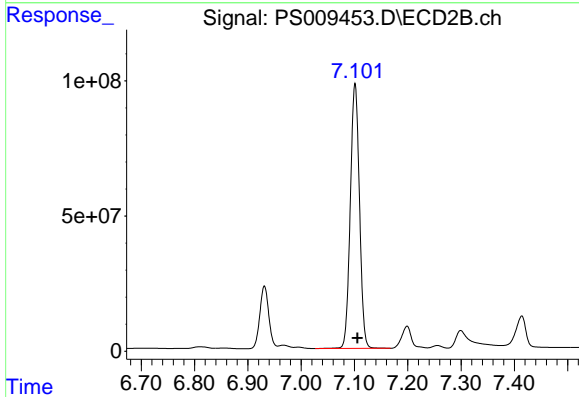
R.T.: 6.931 min  
 Delta R.T.: -0.004 min  
 Response: 272065413  
 Conc: 495.39 ng/ml



#5 DICAMBA

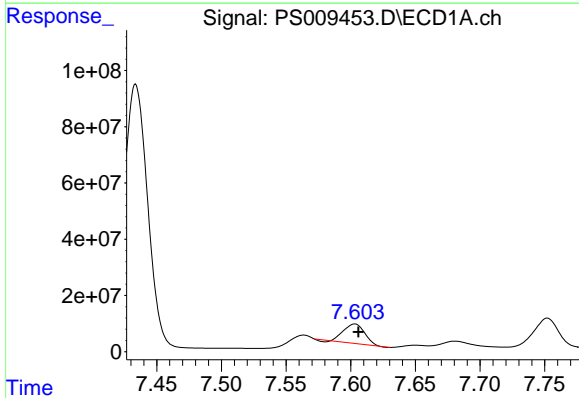
R.T.: 7.434 min  
 Delta R.T.: -0.002 min  
 Response: 1246387131  
 Conc: 585.66 ng/ml

Instrument :  
 ECD\_S  
 ClientSampleId :  
 NB-08-032420MSD



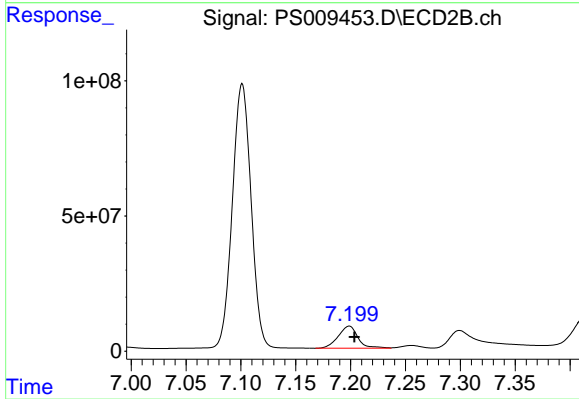
#5 DICAMBA

R.T.: 7.101 min  
 Delta R.T.: -0.005 min  
 Response: 1168207763  
 Conc: 508.89 ng/ml



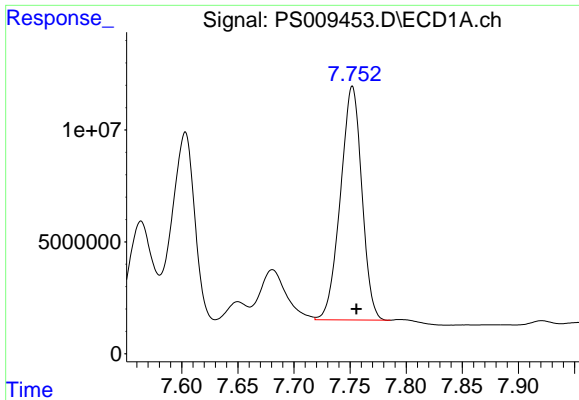
#6 MCPP

R.T.: 7.603 min  
 Delta R.T.: -0.003 min  
 Response: 75680056  
 Conc: 30.76 ug/ml



#6 MCPP

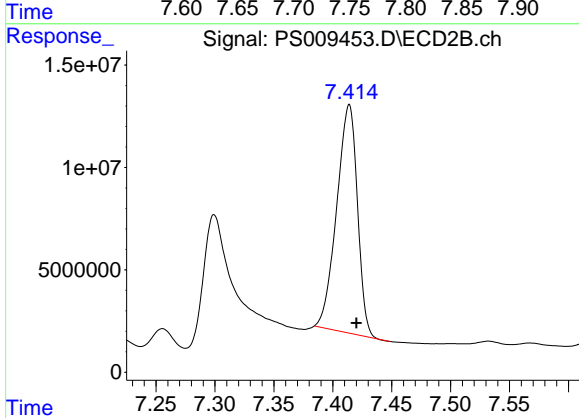
R.T.: 7.198 min  
 Delta R.T.: -0.005 min  
 Response: 102261495  
 Conc: 56.22 ug/ml



#7 MCPA

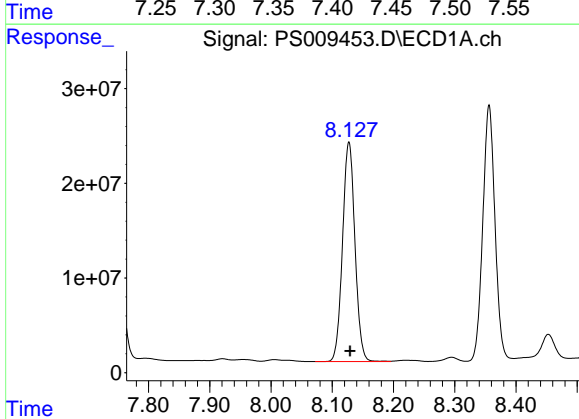
R.T.: 7.752 min  
 Delta R.T.: -0.004 min  
 Response: 138762616  
 Conc: 45.56 ug/ml

Instrument :  
 ECD\_S  
 ClientSampleId :  
 NB-08-032420MSD



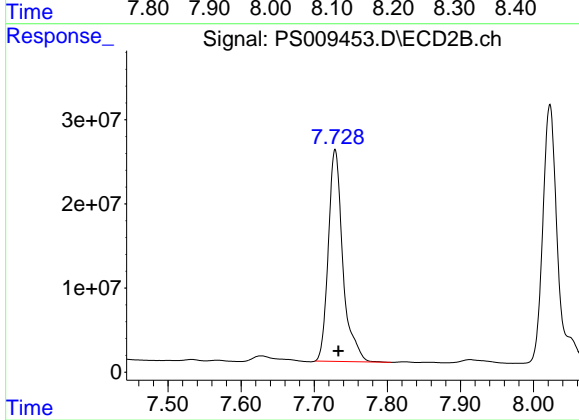
#7 MCPA

R.T.: 7.414 min  
 Delta R.T.: -0.006 min  
 Response: 135900979  
 Conc: 50.36 ug/ml



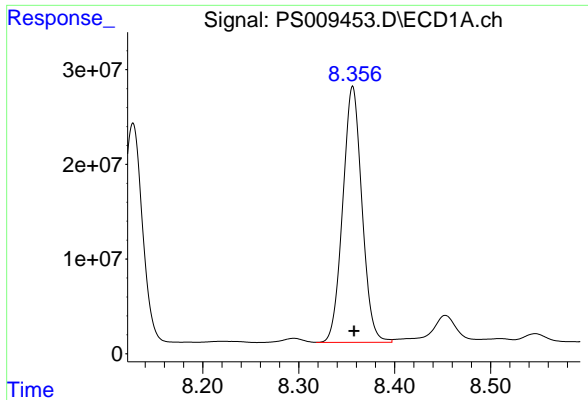
#8 DICHLORPROP

R.T.: 8.127 min  
 Delta R.T.: -0.002 min  
 Response: 326788392  
 Conc: 633.63 ng/ml



#8 DICHLORPROP

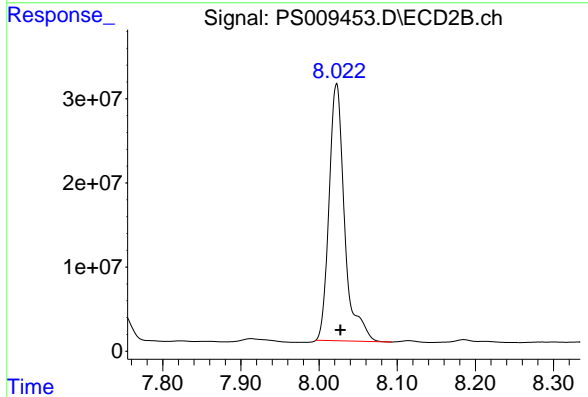
R.T.: 7.729 min  
 Delta R.T.: -0.004 min  
 Response: 347648270  
 Conc: 626.59 ng/ml



#9 2,4-D

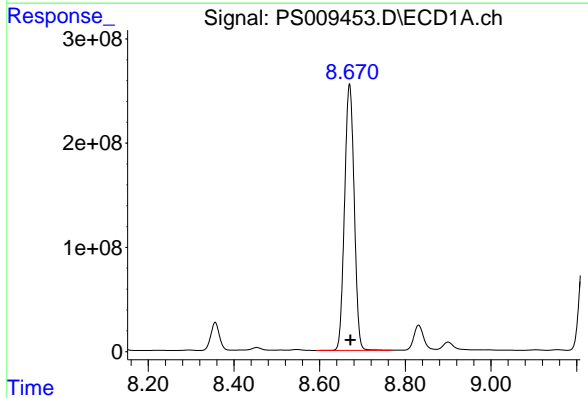
R.T.: 8.356 min  
 Delta R.T.: -0.002 min  
 Response: 376330275  
 Conc: 713.79 ng/ml

Instrument :  
 ECD\_S  
 ClientSampleId :  
 NB-08-032420MSD



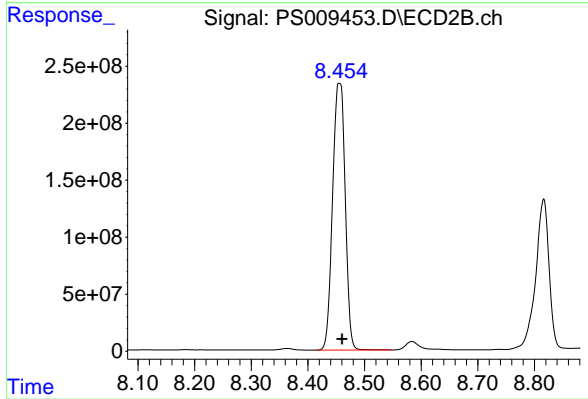
#9 2,4-D

R.T.: 8.022 min  
 Delta R.T.: -0.005 min  
 Response: 421032463  
 Conc: 640.49 ng/ml



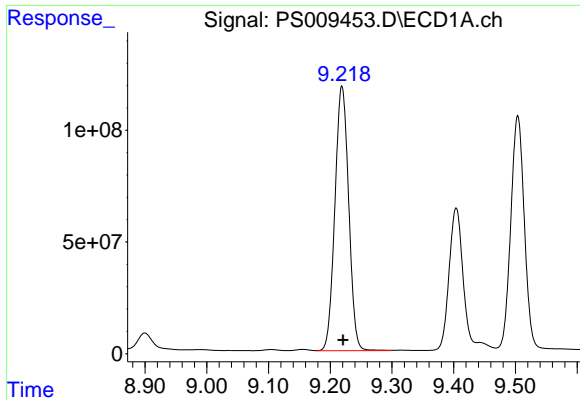
#10 Pentachlorophenol

R.T.: 8.670 min  
 Delta R.T.: -0.002 min  
 Response: 3986751162  
 Conc: 567.01 ng/ml



#10 Pentachlorophenol

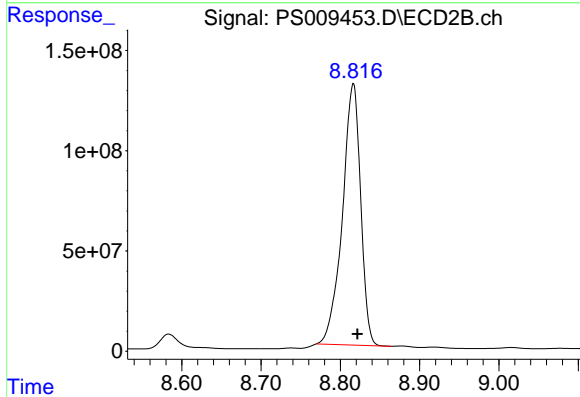
R.T.: 8.456 min  
 Delta R.T.: -0.005 min  
 Response: 3618947192  
 Conc: 476.81 ng/ml



#11 2,4,5-TP (SILVEX)

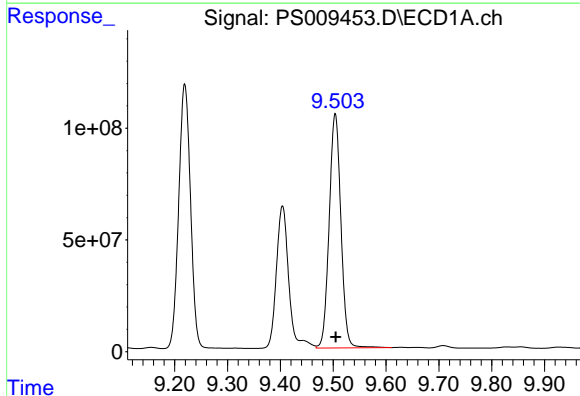
R.T.: 9.219 min  
 Delta R.T.: -0.002 min  
 Response: 1835734913  
 Conc: 669.68 ng/ml

Instrument :  
 ECD\_S  
 ClientSampleId :  
 NB-08-032420MSD



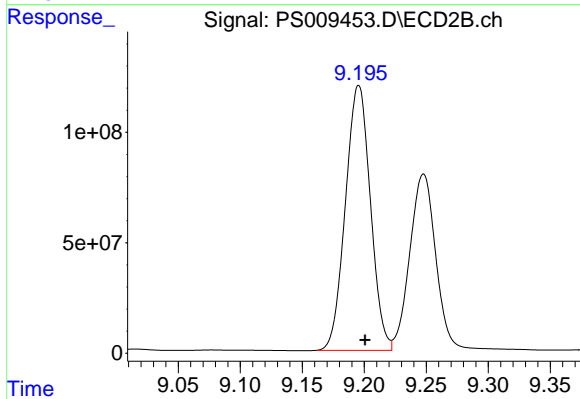
#11 2,4,5-TP (SILVEX)

R.T.: 8.816 min  
 Delta R.T.: -0.005 min  
 Response: 2083019134  
 Conc: 698.74 ng/ml



#12 2,4,5-T

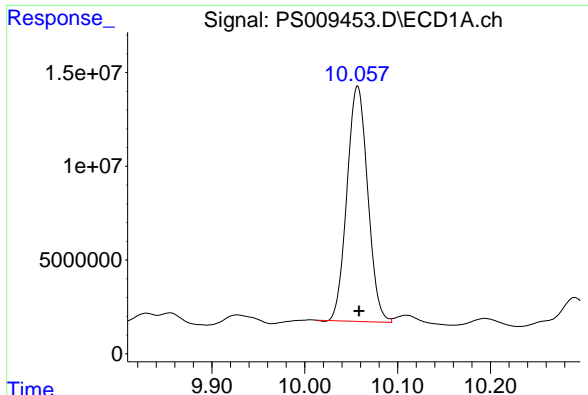
R.T.: 9.504 min  
 Delta R.T.: -0.001 min  
 Response: 1612203542  
 Conc: 633.76 ng/ml



#12 2,4,5-T

R.T.: 9.195 min  
 Delta R.T.: -0.005 min  
 Response: 1684269720  
 Conc: 570.52 ng/ml

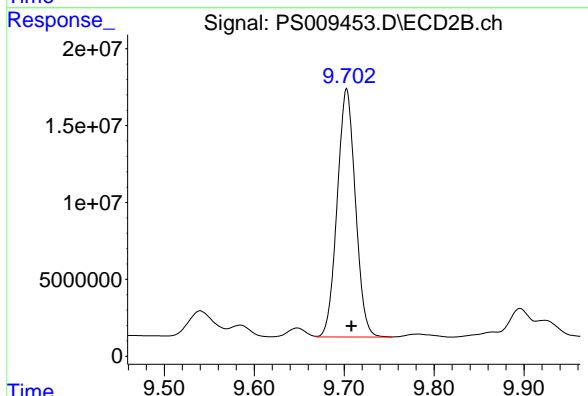




#13 2,4-DB

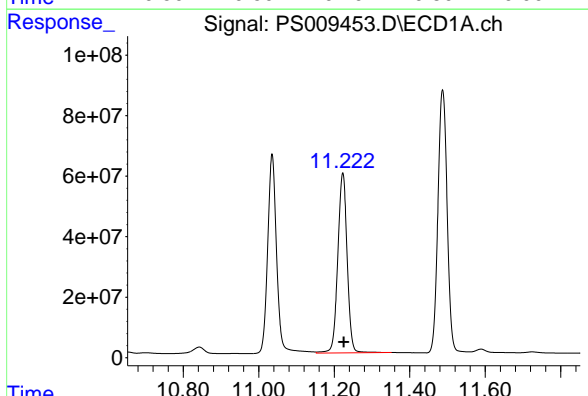
R.T.: 10.057 min  
 Delta R.T.: -0.002 min  
 Response: 194860309  
 Conc: 563.25 ng/ml

Instrument :  
 ECD\_S  
 ClientSampleId :  
 NB-08-032420MSD



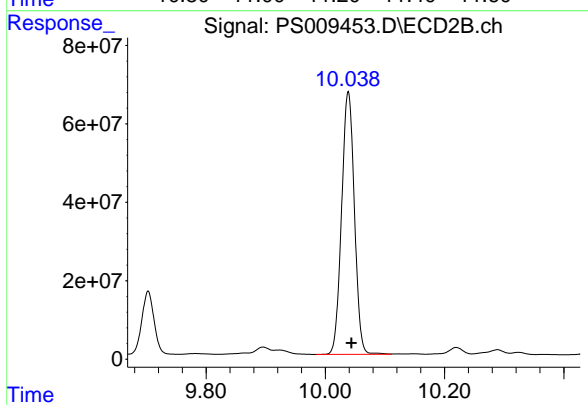
#13 2,4-DB

R.T.: 9.703 min  
 Delta R.T.: -0.005 min  
 Response: 226844818  
 Conc: 597.56 ng/ml



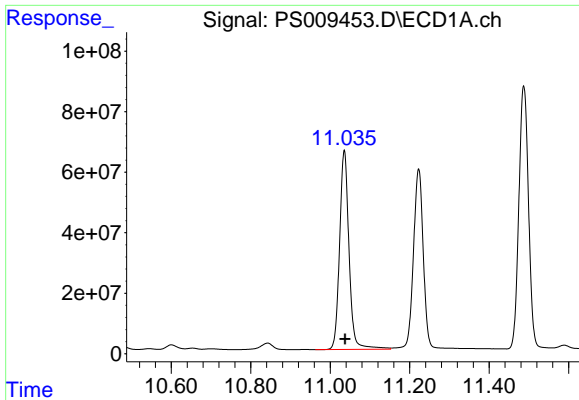
#14 DINOSEB

R.T.: 11.223 min  
 Delta R.T.: -0.003 min  
 Response: 1021055638  
 Conc: 499.50 ng/ml



#14 DINOSEB

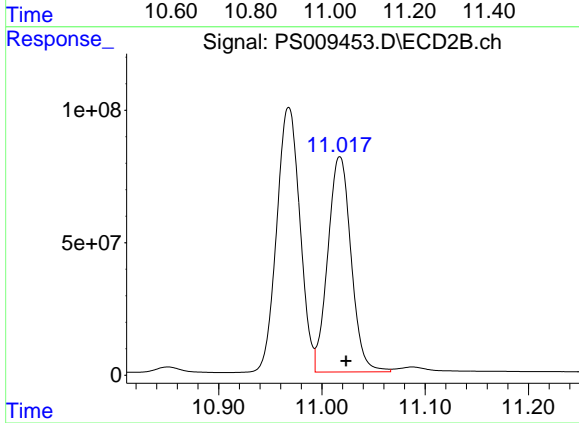
R.T.: 10.039 min  
 Delta R.T.: -0.005 min  
 Response: 997881828  
 Conc: 454.31 ng/ml



#15 Picloram

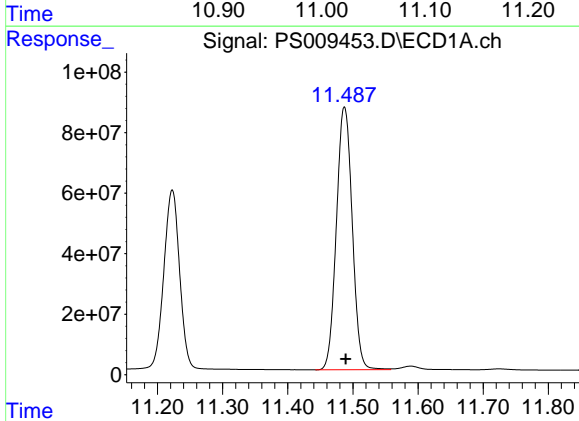
R.T.: 11.035 min  
Delta R.T.: -0.002 min  
Response: 1083254590  
Conc: 356.93 ng/ml

Instrument :  
ECD\_S  
ClientSampleId :  
NB-08-032420MSD



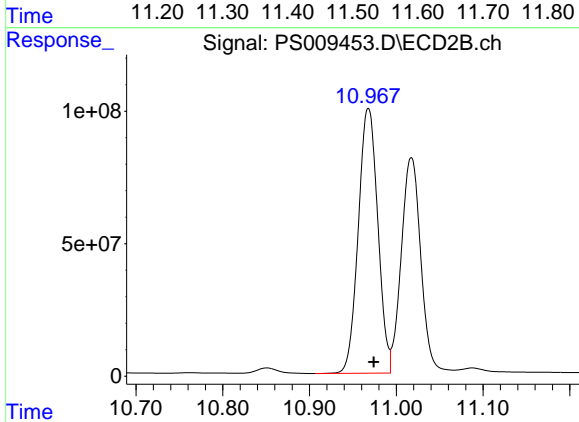
#15 Picloram

R.T.: 11.017 min  
Delta R.T.: -0.006 min  
Response: 1274049211  
Conc: 312.87 ng/ml



#16 DCPA

R.T.: 11.487 min  
Delta R.T.: -0.002 min  
Response: 1467747736  
Conc: 423.44 ng/ml



#16 DCPA

R.T.: 10.968 min  
Delta R.T.: -0.006 min  
Response: 1562508140  
Conc: 403.43 ng/ml