

Data Path : Z:\pestpcbsrv\HPCHEM1\ECD\_S\Data\PS032620\  
 Data File : PS009456.D  
 Signal(s) : Signal #1: ECD1A.ch Signal #2: ECD2B.ch  
 Acq On : 26 Mar 2020 23:56  
 Operator : DD\AJ  
 Sample : L2026-02  
 Misc :  
 ALS Vial : 22 Sample Multiplier: 1

Instrument :  
 ECD\_S  
 ClientSampleId :

Integration File signal 1: autoint1.e  
 Integration File signal 2: autoint2.e  
 Quant Time: Mar 27 01:31:21 2020  
 Quant Method : Z:\pestpcbsrv\HPCHEM1\ECD\_S\Method\PS031120.M  
 Quant Title : 8080.M  
 QLast Update : Thu Mar 12 07:13:24 2020  
 Response via : Initial Calibration  
 Integrator: ChemStation

Volume Inj. : 2 µl  
 Signal #1 Phase : Rtx-CLPesticides Signal #2 Phase: Rtx-CLPesticides2  
 Signal #1 Info : 30M x 0.32mm x0.5 Signal #2 Info : 30M x 0.32mm x 0.25µm

	Compound	RT#1	RT#2	Resp#1	Resp#2	ng/ml	ng/ml
-----							
System Monitoring Compounds							
4) S	2,4-DCAA	7.241	6.931	252.5E6	219.7E6	456.452	400.007
Target Compounds							
2) T	3,5-DICHL...	0.000	6.108	0	70302300	N.D.	86.440
7) T	MCPA	0.000	7.478	0	8403382	N.D.	3.114
8) T	DICHLORPROP	0.000	7.749	0	43207706	N.D.	77.877
9) T	2,4-D	8.426	0.000	14751202	0	27.979	N.D. #
11) T	2,4,5-TP ...	9.189	0.000	9368095	0	3.418	N.D. #
12) T	2,4,5-T	9.445	0.000	64921132	0	25.521	N.D. #
14) T	DINOSEB	11.186	10.046	10024041	11115830	4.904	5.061
15) T	Picloram	11.012	0.000	16961309	0	5.589	N.D. #
-----							

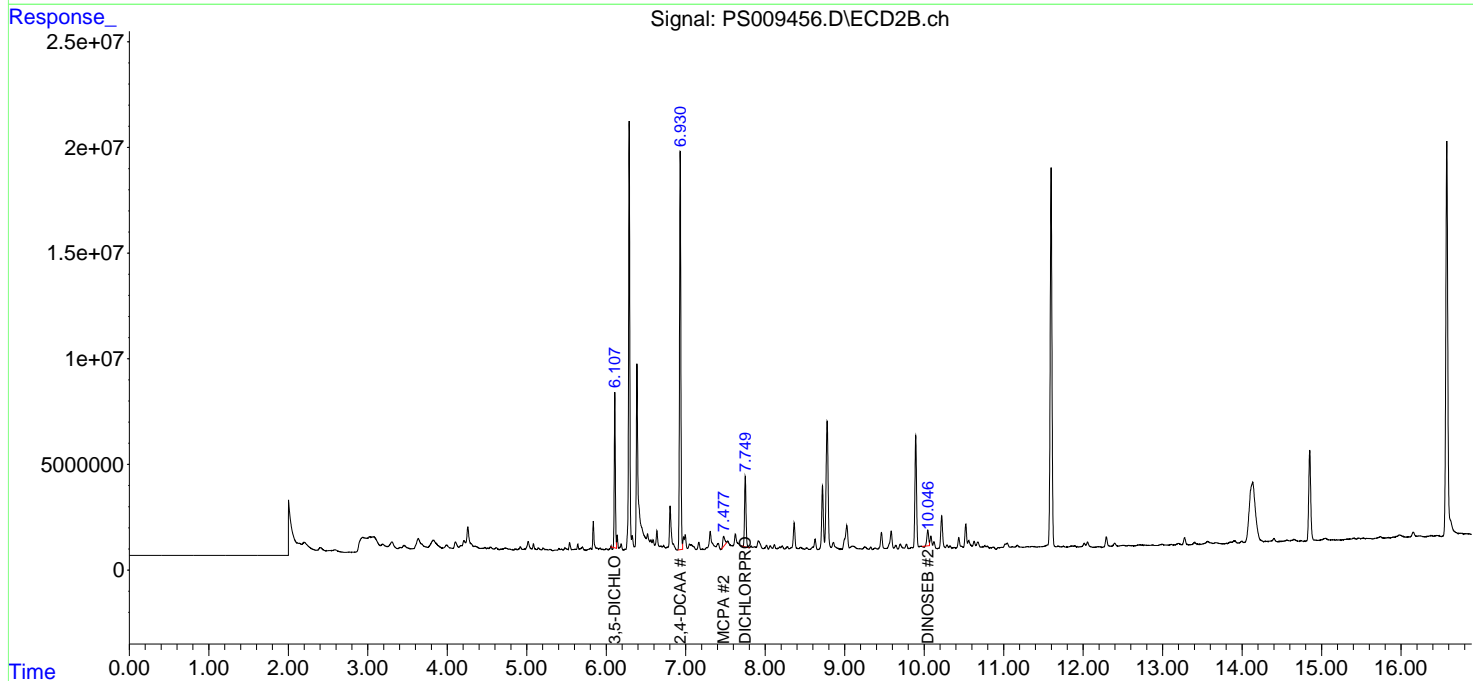
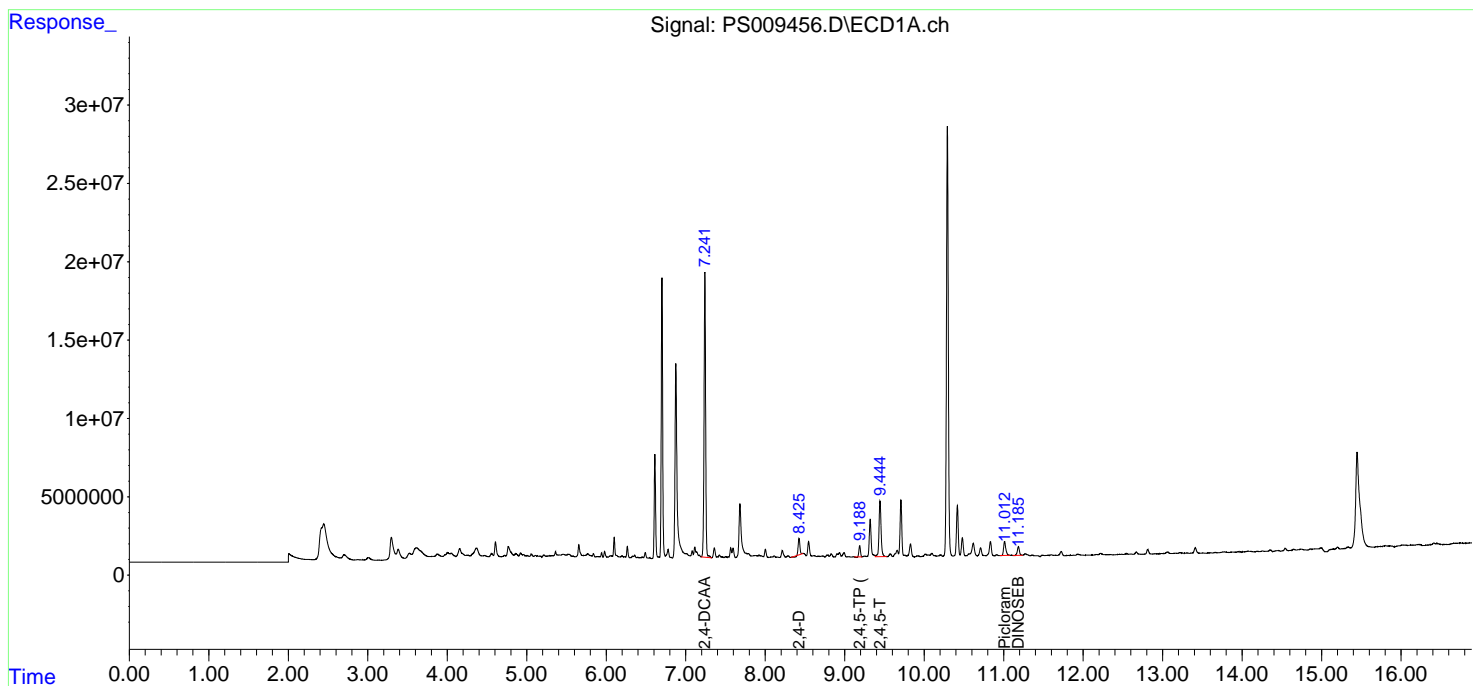
(f)=RT Delta > 1/2 Window (#)=Amounts differ by > 25% (m)=manual int.

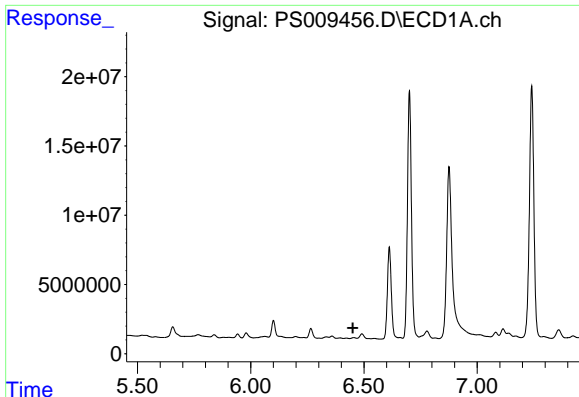
Data Path : Z:\pestpcbsrv\HPCHEM1\ECD\_S\Data\PS032620\  
 Data File : PS009456.D  
 Signal(s) : Signal #1: ECD1A.ch Signal #2: ECD2B.ch  
 Acq On : 26 Mar 2020 23:56  
 Operator : DD\AJ  
 Sample : L2026-02  
 Misc :  
 ALS Vial : 22 Sample Multiplier: 1

Instrument :  
 ECD\_S  
 ClientSampled :

Integration File signal 1: autoint1.e  
 Integration File signal 2: autoint2.e  
 Quant Time: Mar 27 01:31:21 2020  
 Quant Method : Z:\pestpcbsrv\HPCHEM1\ECD\_S\Method\PS031120.M  
 Quant Title : 8080.M  
 QLast Update : Thu Mar 12 07:13:24 2020  
 Response via : Initial Calibration  
 Integrator: ChemStation

Volume Inj. : 2 µl  
 Signal #1 Phase : Rtx-CLPesticides Signal #2 Phase: Rtx-CLPesticides2  
 Signal #1 Info : 30M x 0.32mm x 0.5 Signal #2 Info : 30M x 0.32mm x 0.25µm

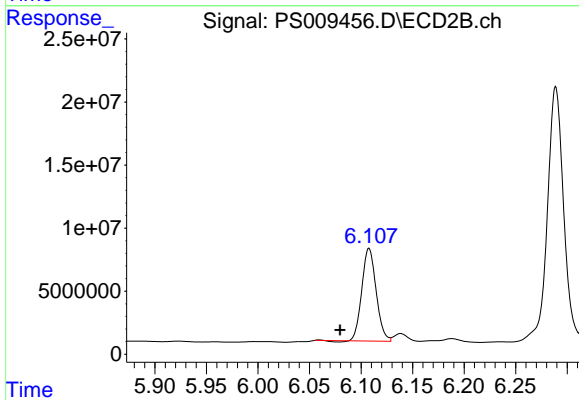




#2 3,5-DICHLOROBenZOIC ACID

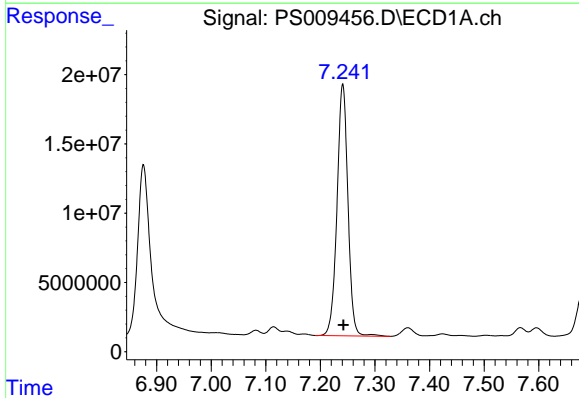
R.T.: 0.000 min  
Exp R.T.: 6.451 min  
Response: 0  
Conc: N.D.

Instrument :  
ECD\_S  
ClientSampled :



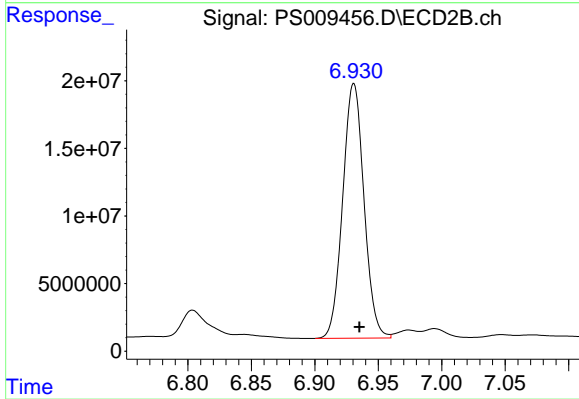
#2 3,5-DICHLOROBenZOIC ACID

R.T.: 6.108 min  
Delta R.T.: 0.028 min  
Response: 70302300  
Conc: 86.44 ng/ml



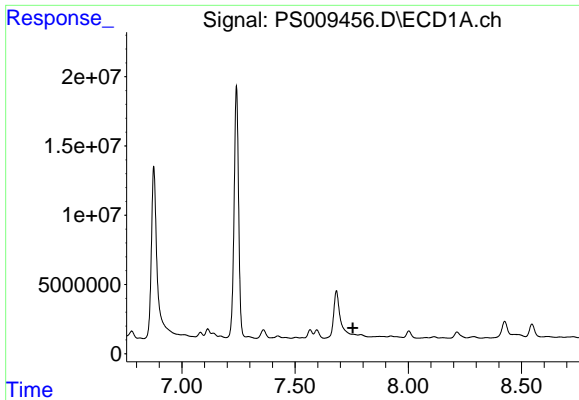
#4 2,4-DCAA

R.T.: 7.241 min  
Delta R.T.: 0.000 min  
Response: 252495581  
Conc: 456.45 ng/ml



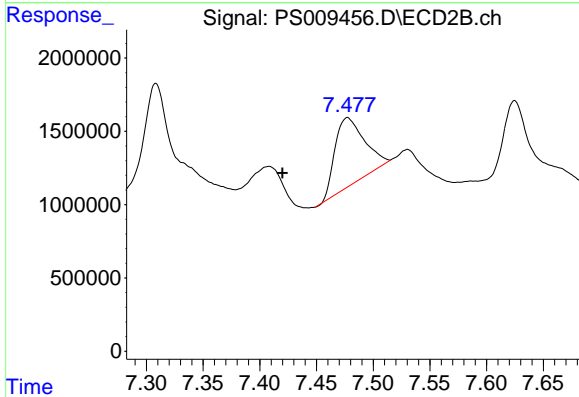
#4 2,4-DCAA

R.T.: 6.931 min  
Delta R.T.: -0.004 min  
Response: 219683037  
Conc: 400.01 ng/ml

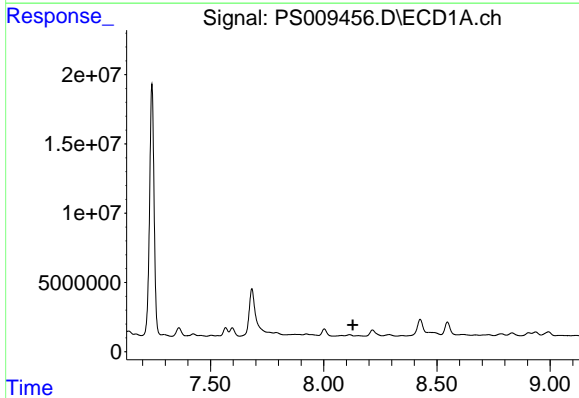


#7 MCPA  
 R.T.: 0.000 min  
 Exp R.T. : 7.756 min  
 Response: 0  
 Conc: N.D.

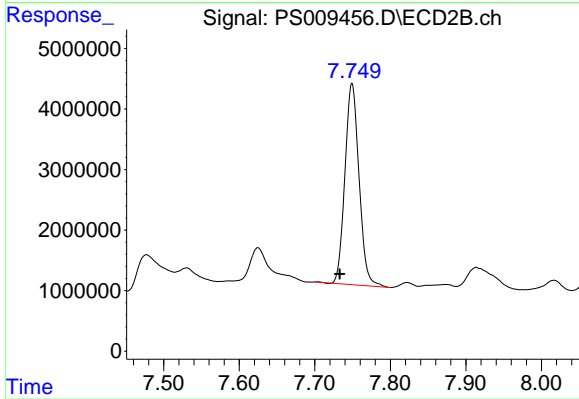
Instrument :  
 ECD\_S  
 ClientSampleId :



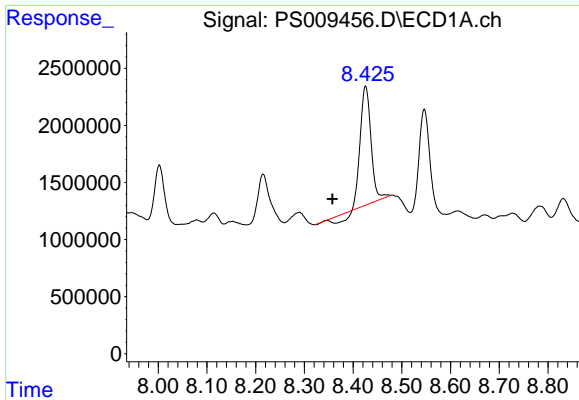
#7 MCPA  
 R.T.: 7.478 min  
 Delta R.T.: 0.058 min  
 Response: 8403382  
 Conc: 3.11 ug/ml



#8 DICHLORPROP  
 R.T.: 0.000 min  
 Exp R.T. : 8.129 min  
 Response: 0  
 Conc: N.D.

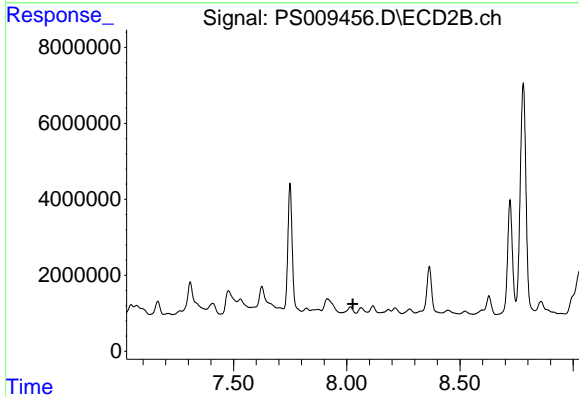


#8 DICHLORPROP  
 R.T.: 7.749 min  
 Delta R.T.: 0.016 min  
 Response: 43207706  
 Conc: 77.88 ng/ml

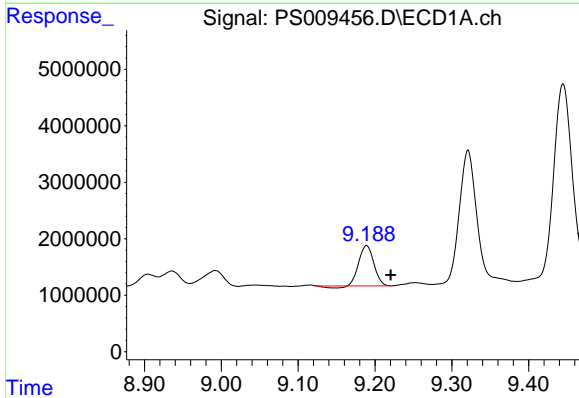


#9 2,4-D  
 R.T.: 8.426 min  
 Delta R.T.: 0.068 min  
 Response: 14751202  
 Conc: 27.98 ng/ml

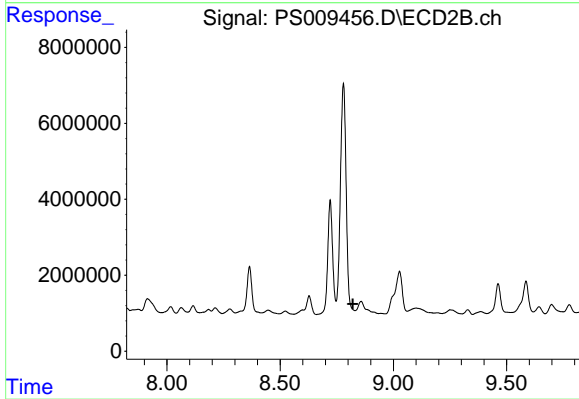
Instrument :  
 ECD\_S  
 ClientSampled :



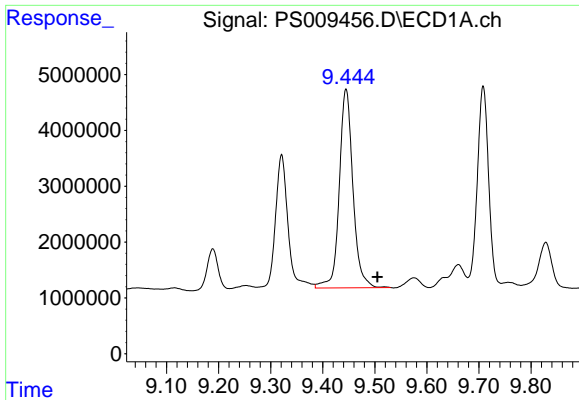
#9 2,4-D  
 R.T.: 0.000 min  
 Exp R.T. : 8.027 min  
 Response: 0  
 Conc: N.D.



#11 2,4,5-TP (SILVEX)  
 R.T.: 9.189 min  
 Delta R.T.: -0.032 min  
 Response: 9368095  
 Conc: 3.42 ng/ml



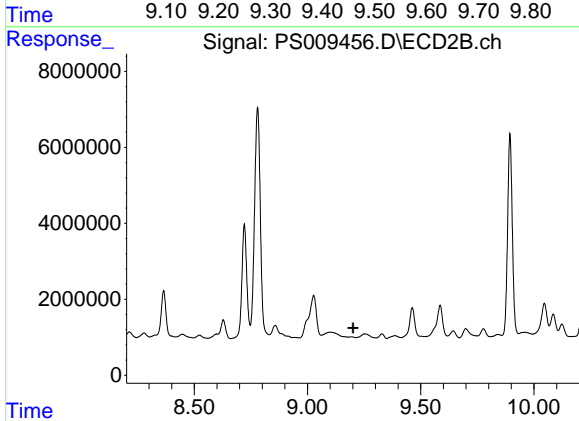
#11 2,4,5-TP (SILVEX)  
 R.T.: 0.000 min  
 Exp R.T. : 8.822 min  
 Response: 0  
 Conc: N.D.



#12 2,4,5-T

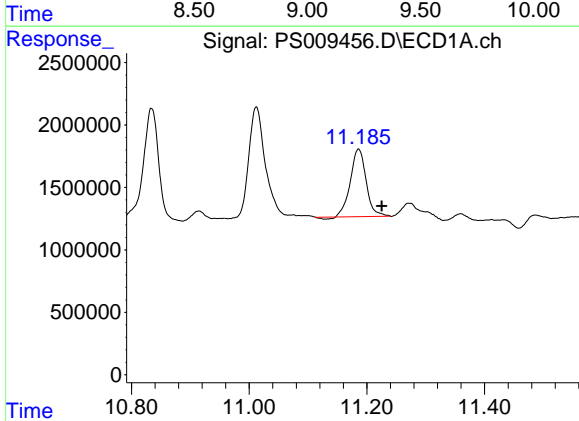
R.T.: 9.445 min  
Delta R.T.: -0.060 min  
Response: 64921132  
Conc: 25.52 ng/ml

Instrument :  
ECD\_S  
ClientSampled :



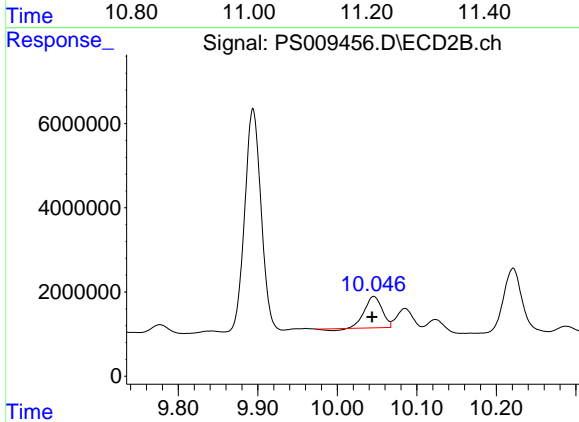
#12 2,4,5-T

R.T.: 0.000 min  
Exp R.T. : 9.201 min  
Response: 0  
Conc: N.D.



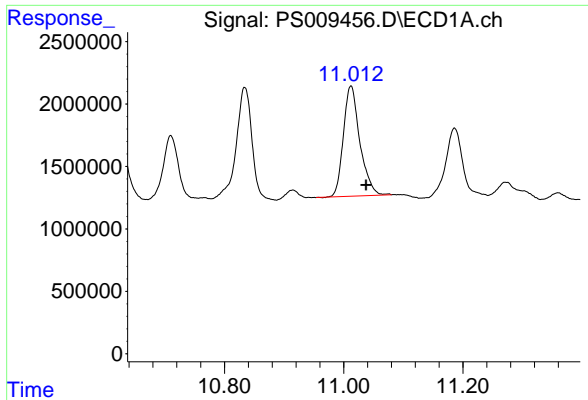
#14 DINOSEB

R.T.: 11.186 min  
Delta R.T.: -0.039 min  
Response: 10024041  
Conc: 4.90 ng/ml



#14 DINOSEB

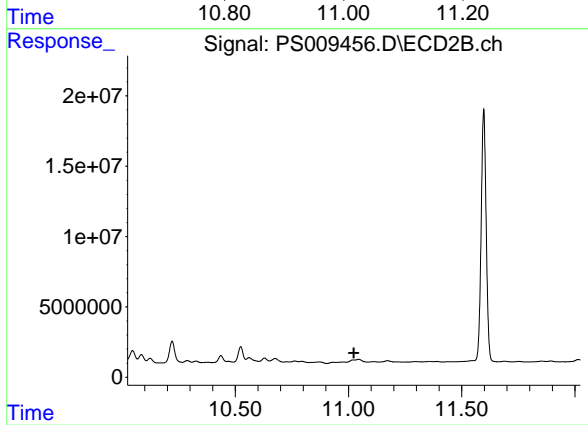
R.T.: 10.046 min  
Delta R.T.: 0.002 min  
Response: 11115830  
Conc: 5.06 ng/ml



#15 Picloram

R.T.: 11.012 min  
Delta R.T.: -0.025 min  
Response: 16961309  
Conc: 5.59 ng/ml

Instrument :  
ECD\_S  
ClientSampled :



#15 Picloram

R.T.: 0.000 min  
Exp R.T. : 11.023 min  
Response: 0  
Conc: N.D.