

Data Path : Z:\pestpcbsrv\HPCHEM1\ECD_S\Data\PS032719\
 Data File : PS003803.D
 Signal(s) : Signal #1: ECD1A.ch Signal #2: ECD2B.ch
 Acq On : 28 Mar 2019 00:56
 Operator : EI\SJ
 Sample : HSTDCCC750
 Misc :
 ALS Vial : 3 Sample Multiplier: 1

Instrument :
 ECD_S
 ClientSampleId :
 HSTDCCC750

Integration File signal 1: autoint1.e
 Integration File signal 2: autoint2.e
 Quant Time: Mar 28 05:03:37 2019
 Quant Method : Z:\pestpcbsrv\HPCHEM1\ECD_S\Method\PS032619.M
 Quant Title : 8080.M
 QLast Update : Wed Mar 27 05:52:44 2019
 Response via : Initial Calibration
 Integrator: ChemStation

Volume Inj. : 2 µl
 Signal #1 Phase : Rtx-CLPesticides Signal #2 Phase: Rtx-CLPesticides2
 Signal #1 Info : 30M x 0.32mm x0.5 Signal #2 Info : 30M x 0.32mm x 0.25µm

	Compound	RT#1	RT#2	Resp#1	Resp#2	ng/ml	ng/ml

System Monitoring Compounds							
4) S	2,4-DCAA	11.266	10.769	311.9E6	354.6E6	714.989	722.791
Target Compounds							
1) T	Dalapon	2.834	2.308	494.1E6	474.1E6	662.707	649.849
2) T	3,5-DICHL...	9.694	8.930	463.1E6	431.4E6	673.743	676.331
3) T	4-Nitroph...	10.874	9.926	138.5E6	148.3E6	639.180	653.001
5) T	DICAMBA	11.566	11.046	1420.5E6	1291.6E6	692.418	694.512
6) T	MCPP	11.908	11.278	98386517	82395201	70.729	69.784
7) T	MCPA	12.159	11.653	145.9E6	122.9E6	69.134	68.932
8) T	DICHLORPROP	12.758	12.172	332.6E6	316.7E6	680.852	680.262
9) T	2,4-D	13.126	12.647	319.3E6	356.1E6	656.650	669.570
10) T	Pentachlo...	13.482	13.175	5412.6E6	4872.1E6	702.623	704.016
11) T	2,4,5-TP ...	14.361	13.802	1995.6E6	1838.0E6	695.668	694.009
12) T	2,4,5-T	14.763	14.367	1960.9E6	1470.5E6	690.377	676.447
13) T	2,4-DB	15.510	15.019	193.5E6	192.9E6	641.726	649.665
14) T	DINOSEB	16.969	15.438	1679.1E6	1314.7E6	702.155	685.186
15) T	Picloram	16.754	16.672	2149.7E6	2033.6E6	632.804	641.274
16) T	DCPA	17.316	16.612	2546.4E6	2375.7E6	707.162	702.856

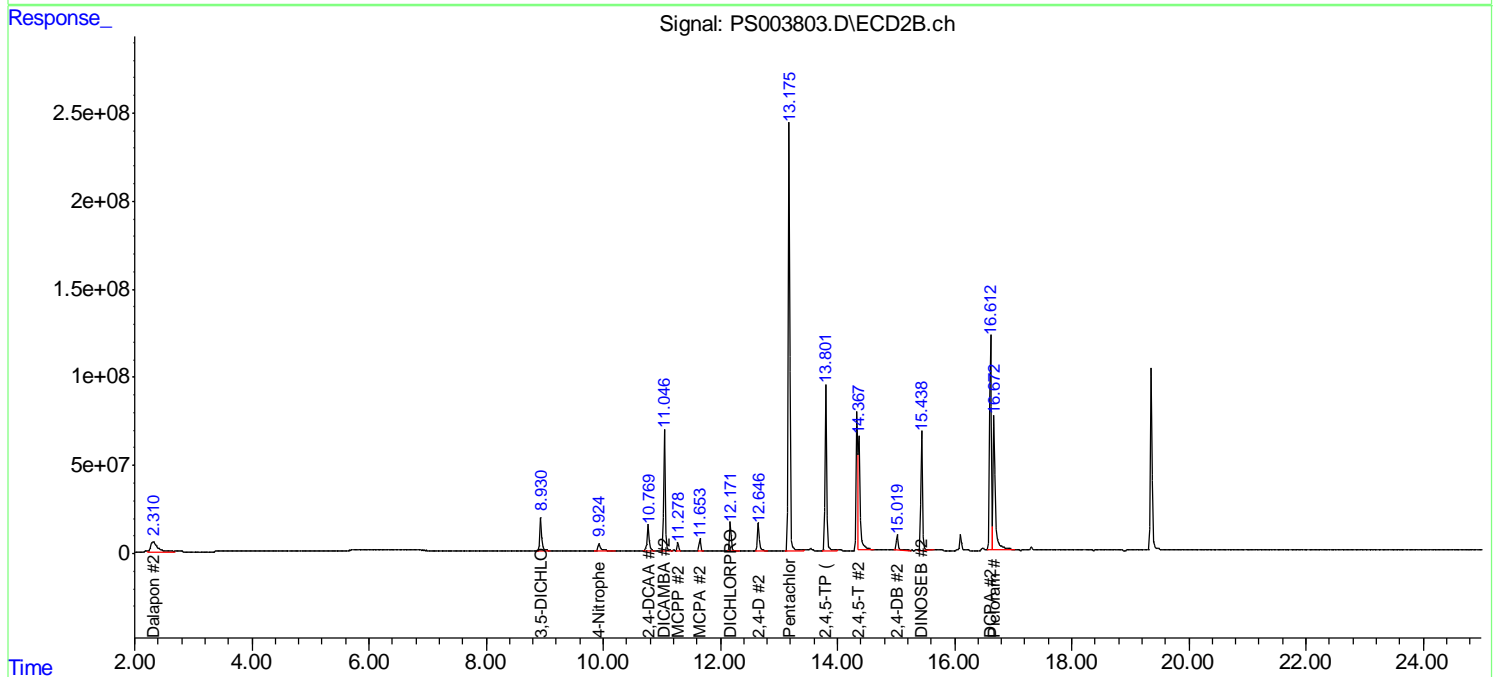
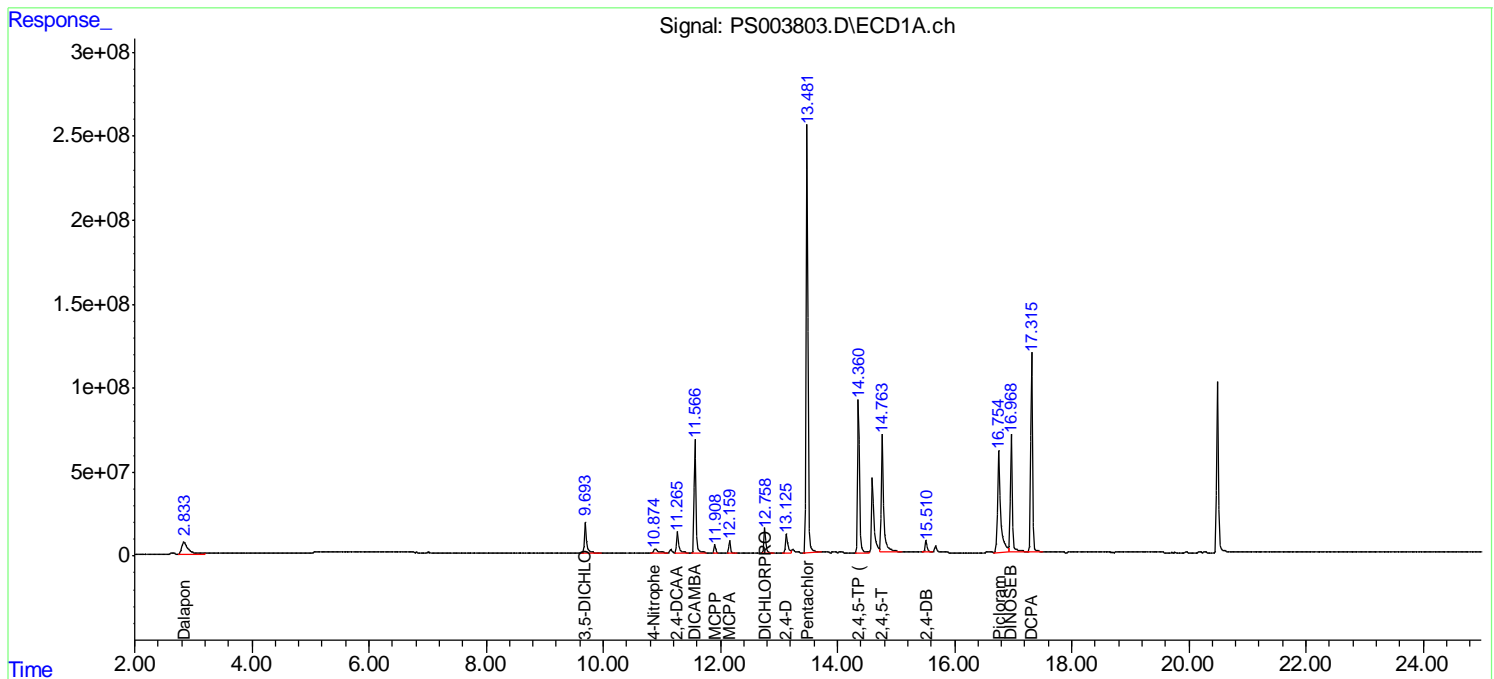
(f)=RT Delta > 1/2 Window (#)=Amounts differ by > 25% (m)=manual int.

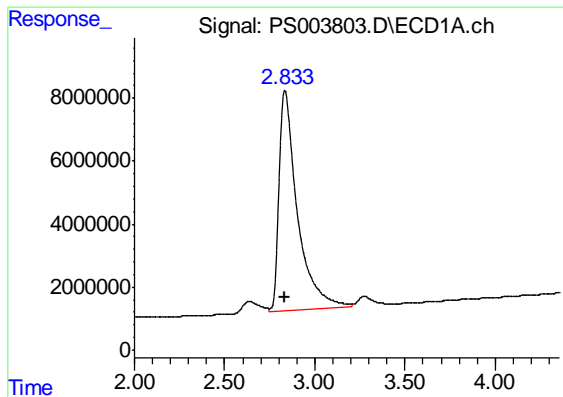
Data Path : Z:\pestpcbsrv\HPCHEM1\ECD_S\Data\PS032719\
 Data File : PS003803.D
 Signal(s) : Signal #1: ECD1A.ch Signal #2: ECD2B.ch
 Acq On : 28 Mar 2019 00:56
 Operator : EI\SJ
 Sample : HSTDCCC750
 Misc :
 ALS Vial : 3 Sample Multiplier: 1

Instrument :
 ECD_S
 ClientSampleId :
 HSTDCCC750

Integration File signal 1: autoint1.e
 Integration File signal 2: autoint2.e
 Quant Time: Mar 28 05:03:37 2019
 Quant Method : Z:\pestpcbsrv\HPCHEM1\ECD_S\Method\PS032619.M
 Quant Title : 8080.M
 QLast Update : Wed Mar 27 05:52:44 2019
 Response via : Initial Calibration
 Integrator: ChemStation

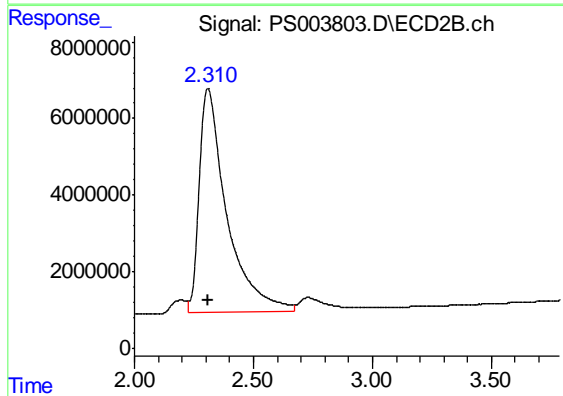
Volume Inj. : 2 µl
 Signal #1 Phase : Rtx-CLPesticides Signal #2 Phase: Rtx-CLPesticides2
 Signal #1 Info : 30M x 0.32mm x0.5 Signal #2 Info : 30M x 0.32mm x 0.25µm



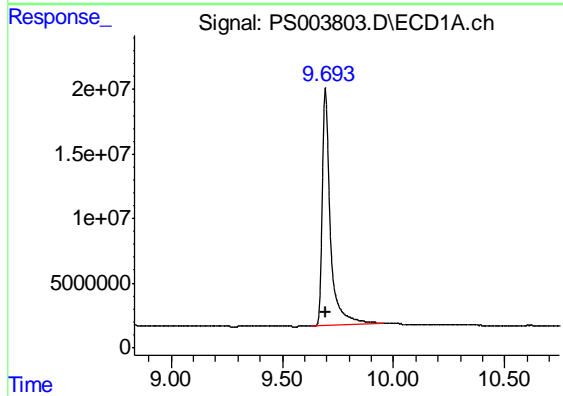


#1 Dalapon
R.T.: 2.834 min
Delta R.T.: -0.001 min
Response: 494070197
Conc: 662.71 ng/ml

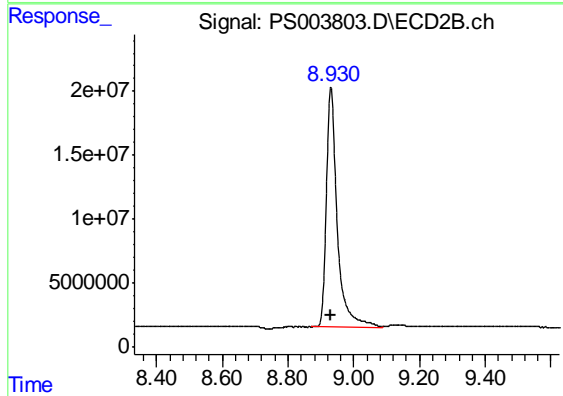
Instrument :
ECD_S
ClientSampleId :
HSTDCCC750



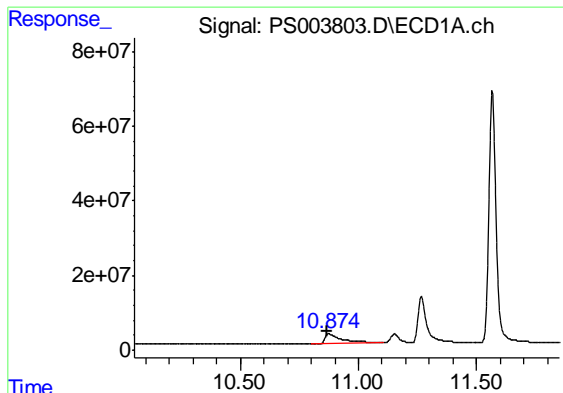
#1 Dalapon
R.T.: 2.308 min
Delta R.T.: -0.002 min
Response: 474147907
Conc: 649.85 ng/ml



#2 3,5-DICHLOROBENZOIC ACID
R.T.: 9.694 min
Delta R.T.: 0.000 min
Response: 463105443
Conc: 673.74 ng/ml



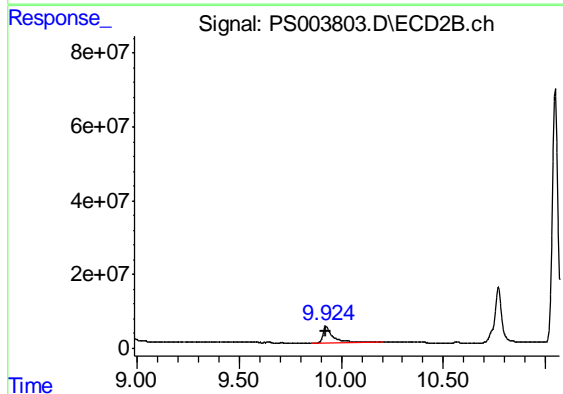
#2 3,5-DICHLOROBENZOIC ACID
R.T.: 8.930 min
Delta R.T.: 0.000 min
Response: 431402845
Conc: 676.33 ng/ml



#3 4-Nitrophenol

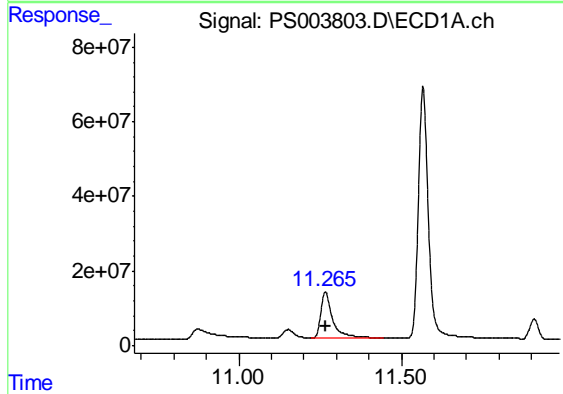
R.T.: 10.874 min
 Delta R.T.: 0.010 min
 Response: 138484984
 Conc: 639.18 ng/ml

Instrument :
 ECD_S
 ClientSampleId :
 HSTDCCC750



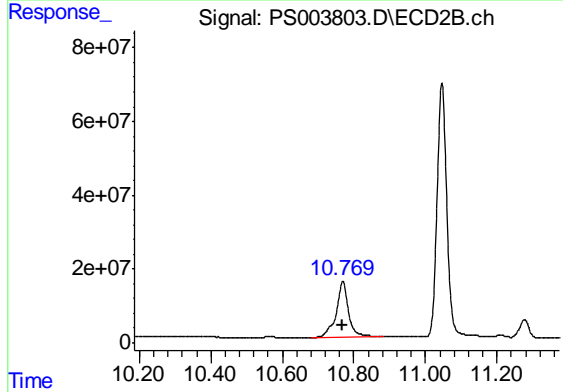
#3 4-Nitrophenol

R.T.: 9.926 min
 Delta R.T.: 0.002 min
 Response: 148253918
 Conc: 653.00 ng/ml



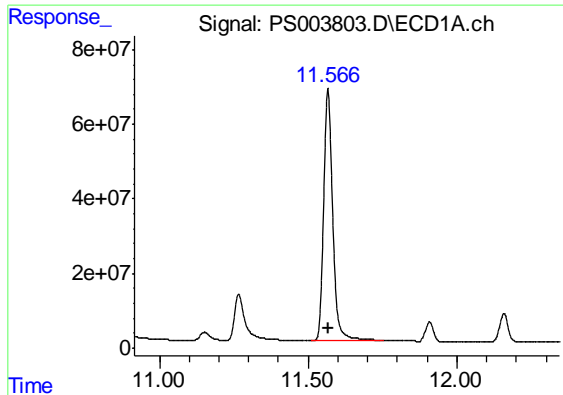
#4 2,4-DCAA

R.T.: 11.266 min
 Delta R.T.: 0.000 min
 Response: 311887004
 Conc: 714.99 ng/ml



#4 2,4-DCAA

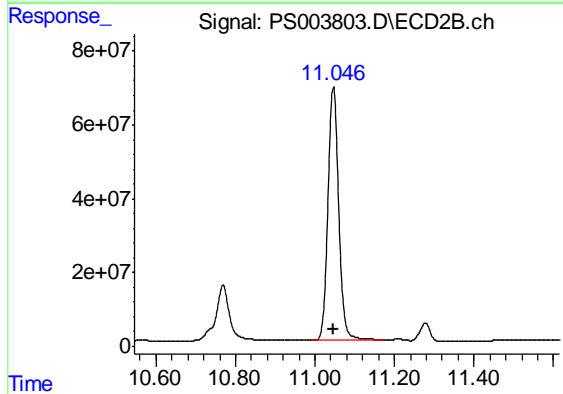
R.T.: 10.769 min
 Delta R.T.: 0.000 min
 Response: 354643448
 Conc: 722.79 ng/ml



#5 DICAMBA

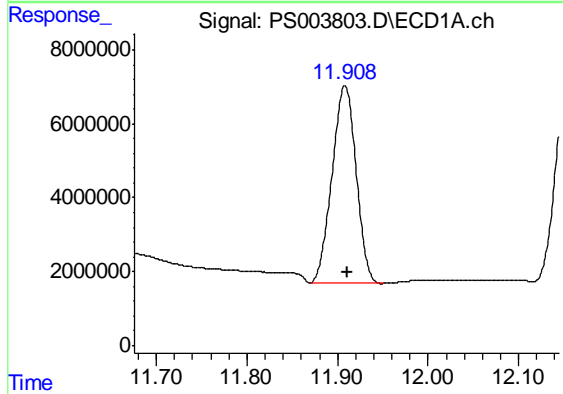
R.T.: 11.566 min
 Delta R.T.: -0.002 min
 Response: 1420465301
 Conc: 692.42 ng/ml

Instrument :
 ECD_S
 ClientSampleId :
 HSTDCCC750



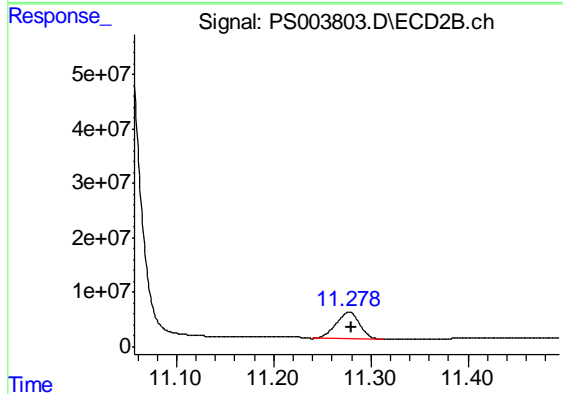
#5 DICAMBA

R.T.: 11.046 min
 Delta R.T.: -0.001 min
 Response: 1291621793
 Conc: 694.51 ng/ml



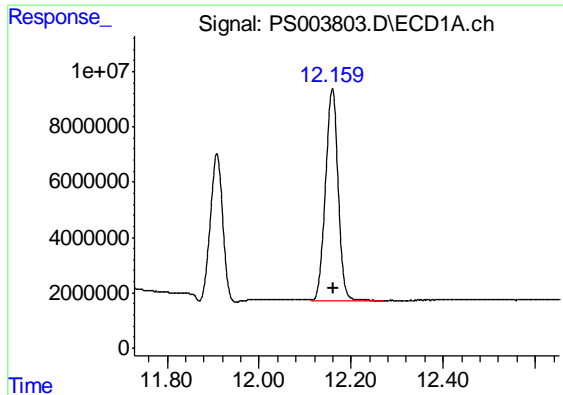
#6 MCPP

R.T.: 11.908 min
 Delta R.T.: -0.003 min
 Response: 98386517
 Conc: 70.73 ug/ml



#6 MCPP

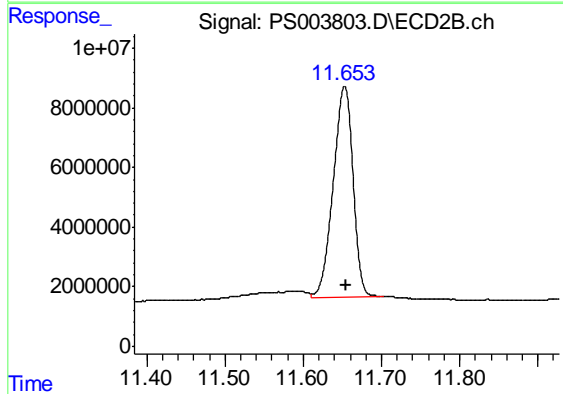
R.T.: 11.278 min
 Delta R.T.: -0.002 min
 Response: 82395201
 Conc: 69.78 ug/ml



#7 MCPA

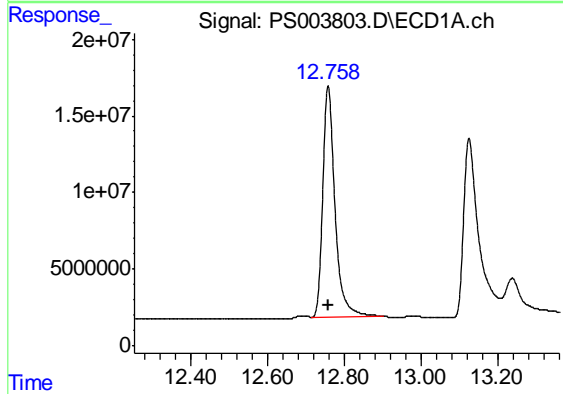
R.T.: 12.159 min
 Delta R.T.: -0.003 min
 Response: 145858141
 Conc: 69.13 ug/ml

Instrument :
 ECD_S
 ClientSampleId :
 HSTDCCC750



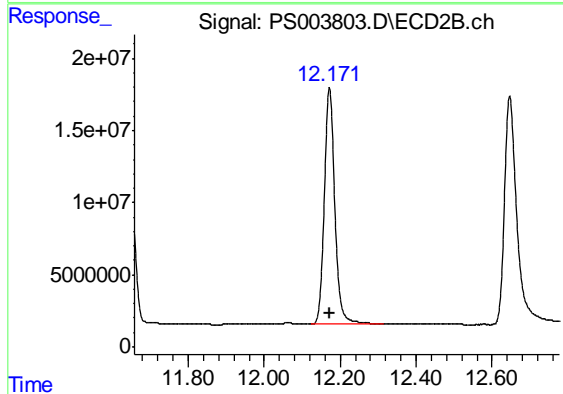
#7 MCPA

R.T.: 11.653 min
 Delta R.T.: -0.002 min
 Response: 122927783
 Conc: 68.93 ug/ml



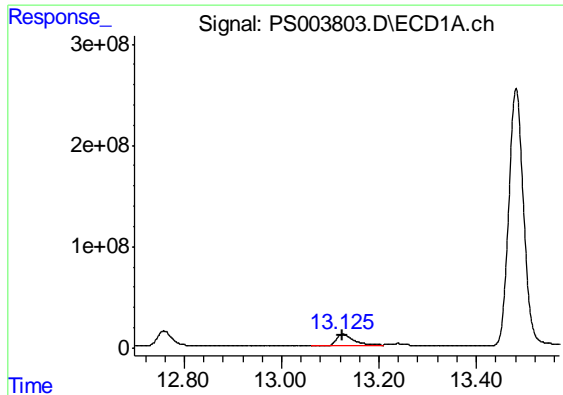
#8 DICHLORPROP

R.T.: 12.758 min
 Delta R.T.: -0.002 min
 Response: 332554701
 Conc: 680.85 ng/ml



#8 DICHLORPROP

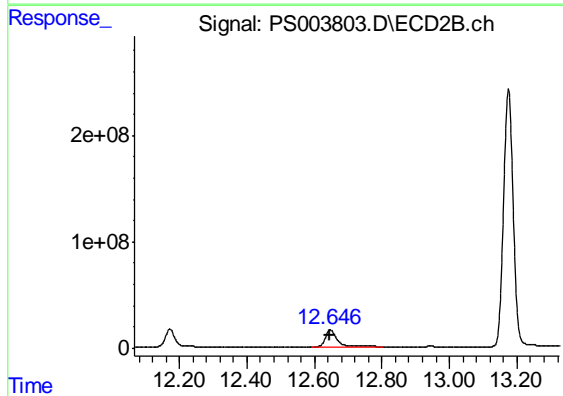
R.T.: 12.172 min
 Delta R.T.: -0.001 min
 Response: 316685010
 Conc: 680.26 ng/ml



#9 2,4-D

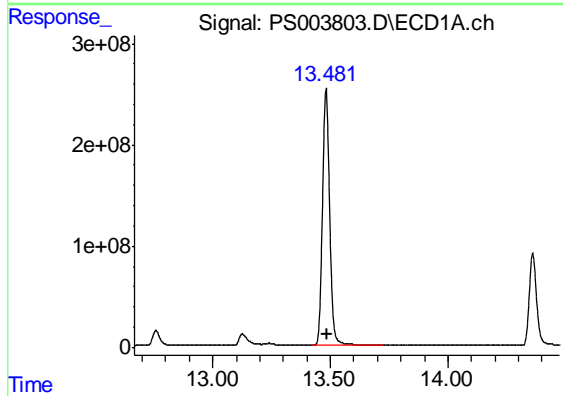
R.T.: 13.126 min
 Delta R.T.: 0.001 min
 Response: 319311915
 Conc: 656.65 ng/ml

Instrument :
 ECD_S
 ClientSampleId :
 HSTDCCC750



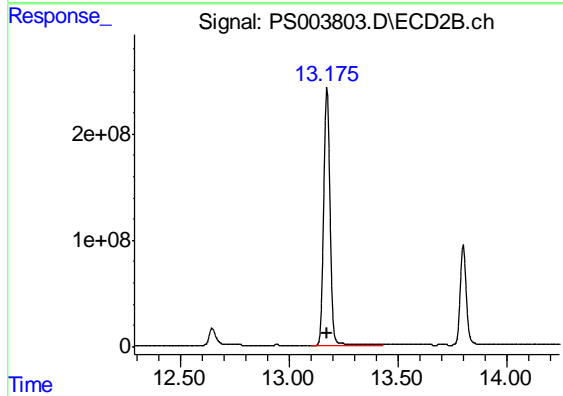
#9 2,4-D

R.T.: 12.647 min
 Delta R.T.: 0.000 min
 Response: 356148321
 Conc: 669.57 ng/ml



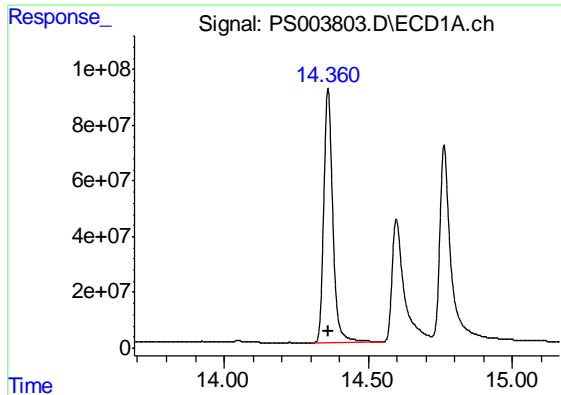
#10 Pentachlorophenol

R.T.: 13.482 min
 Delta R.T.: -0.003 min
 Response: 5412551722
 Conc: 702.62 ng/ml



#10 Pentachlorophenol

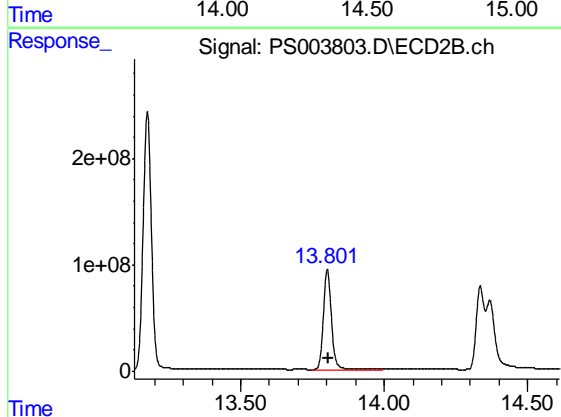
R.T.: 13.175 min
 Delta R.T.: -0.002 min
 Response: 4872051003
 Conc: 704.02 ng/ml



#11 2,4,5-TP (SILVEX)

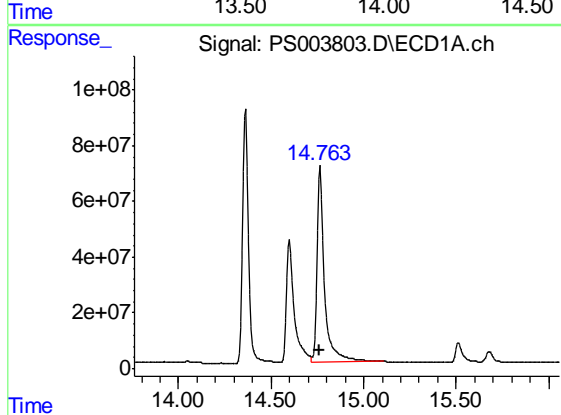
R.T.: 14.361 min
Delta R.T.: -0.002 min
Response: 1995622810
Conc: 695.67 ng/ml

Instrument :
ECD_S
ClientSampleId :
HSTDCCC750



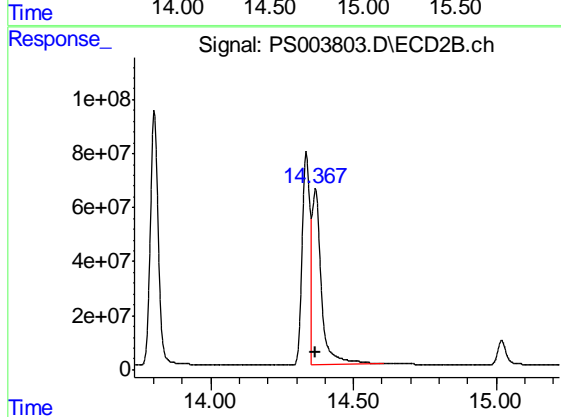
#11 2,4,5-TP (SILVEX)

R.T.: 13.802 min
Delta R.T.: -0.002 min
Response: 1838008929
Conc: 694.01 ng/ml



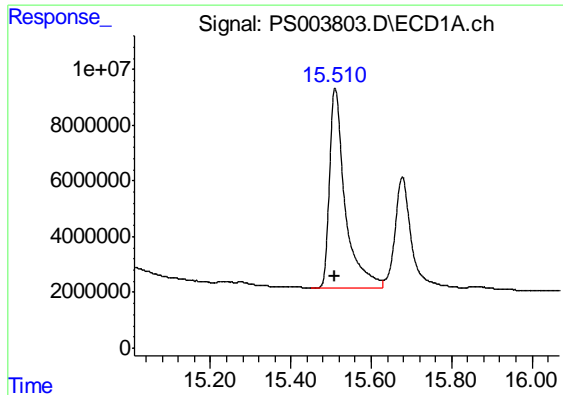
#12 2,4,5-T

R.T.: 14.763 min
Delta R.T.: 0.000 min
Response: 1960931278
Conc: 690.38 ng/ml



#12 2,4,5-T

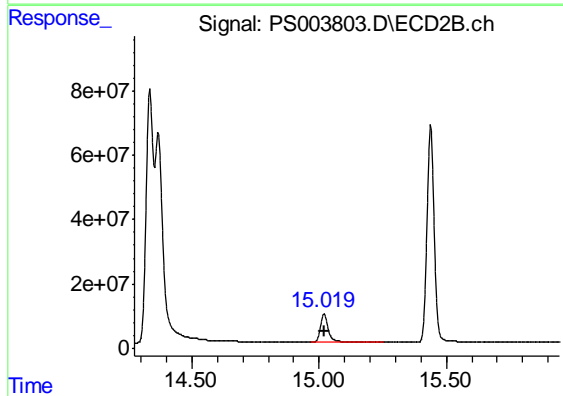
R.T.: 14.367 min
Delta R.T.: 0.000 min
Response: 1470512049
Conc: 676.45 ng/ml



#13 2,4-DB

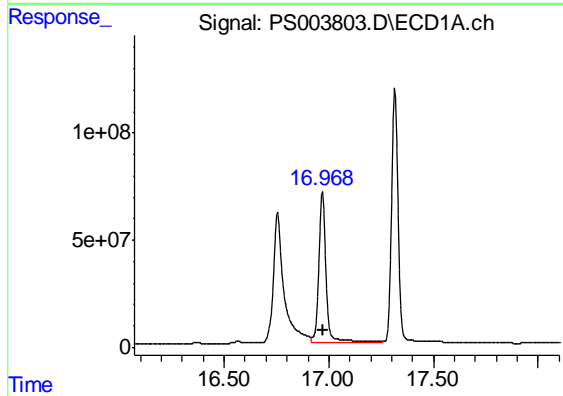
R.T.: 15.510 min
 Delta R.T.: 0.000 min
 Response: 193482086
 Conc: 641.73 ng/ml

Instrument :
 ECD_S
 ClientSampleId :
 HSTDCCC750



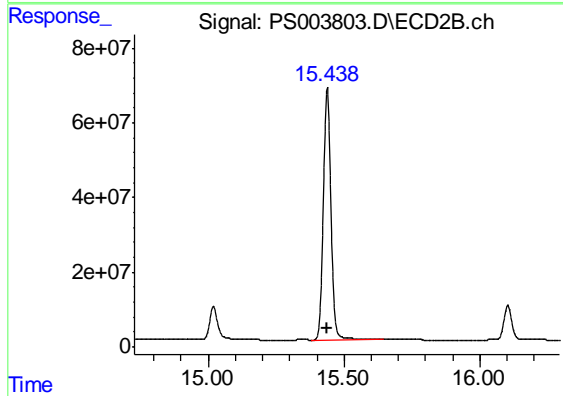
#13 2,4-DB

R.T.: 15.019 min
 Delta R.T.: 0.000 min
 Response: 192918165
 Conc: 649.67 ng/ml



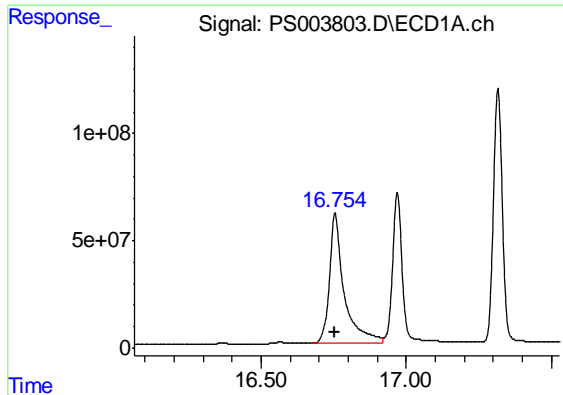
#14 DINOSEB

R.T.: 16.969 min
 Delta R.T.: -0.003 min
 Response: 1679121735
 Conc: 702.16 ng/ml



#14 DINOSEB

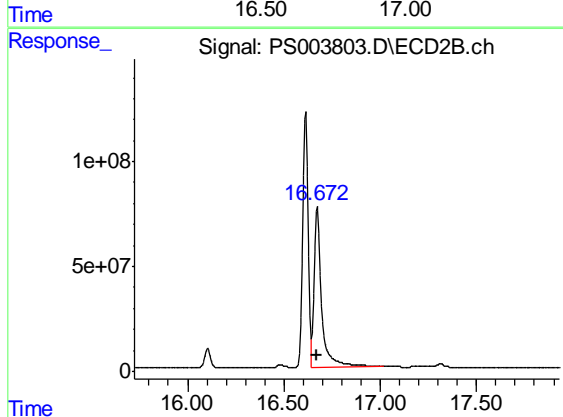
R.T.: 15.438 min
 Delta R.T.: -0.002 min
 Response: 1314672987
 Conc: 685.19 ng/ml



#15 Picloram

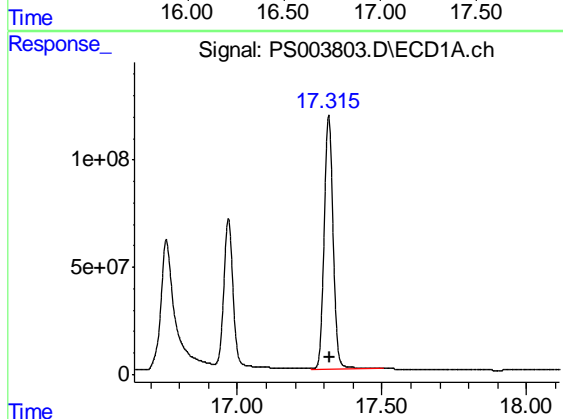
R.T.: 16.754 min
 Delta R.T.: 0.003 min
 Response: 2149671959
 Conc: 632.80 ng/ml

Instrument :
 ECD_S
 ClientSampleId :
 HSTDCCC750



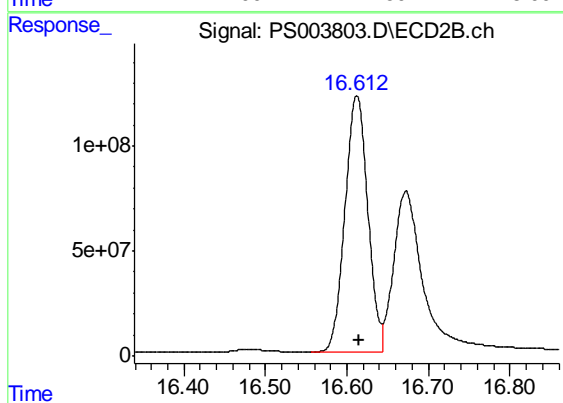
#15 Picloram

R.T.: 16.672 min
 Delta R.T.: 0.000 min
 Response: 2033622193
 Conc: 641.27 ng/ml



#16 DCPA

R.T.: 17.316 min
 Delta R.T.: -0.003 min
 Response: 2546420639
 Conc: 707.16 ng/ml



#16 DCPA

R.T.: 16.612 min
 Delta R.T.: -0.002 min
 Response: 2375677036
 Conc: 702.86 ng/ml