

Data Path : Z:\pestpcbsrv\HPCHEM1\ECD_S\Data\PS032720\
 Data File : PS009462.D
 Signal(s) : Signal #1: ECD1A.ch Signal #2: ECD2B.ch
 Acq On : 27 Mar 2020 11:35
 Operator : DD\AJ
 Sample : HSTDCCC750
 Misc :
 ALS Vial : 3 Sample Multiplier: 1

Instrument :
 ECD_S
 ClientSampleId :
 HSTDCCC750

Integration File signal 1: autoint1.e
 Integration File signal 2: autoint2.e
 Quant Time: Mar 27 15:43:09 2020
 Quant Method : Z:\pestpcbsrv\HPCHEM1\ECD_S\Method\PS031120.M
 Quant Title : 8080.M
 QLast Update : Thu Mar 12 07:13:24 2020
 Response via : Initial Calibration
 Integrator: ChemStation

Volume Inj. : 2 µl
 Signal #1 Phase : Rtx-CLPesticides Signal #2 Phase: Rtx-CLPesticides2
 Signal #1 Info : 30M x 0.32mm x0.5 Signal #2 Info : 30M x 0.32mm x 0.25µm

	Compound	RT#1	RT#2	Resp#1	Resp#2	ng/ml	ng/ml

System Monitoring Compounds							
4) S	2,4-DCAA	7.242	6.932	473.5E6	410.0E6	855.975	746.530
Target Compounds							
1) T	Dalapon	3.047	2.628	575.7E6	487.0E6	738.293	618.507
2) T	3,5-DICHL...	6.450	6.078	606.0E6	560.8E6	802.930	689.487
3) T	4-Nitroph...	7.070	6.534	185.7E6	215.5E6	778.116	677.106
5) T	DICAMBA	7.434	7.102	1707.2E6	1561.9E6	802.187	680.388
6) T	MCP P	7.605	7.201	136.8E6	130.5E6	55.582	71.734 #
7) T	MCPA	7.755	7.417	189.0E6	184.4E6	62.050	68.341
8) T	DICHLORPROP	8.128	7.730	410.2E6	390.4E6	795.310	703.735
9) T	2,4-D	8.357	8.023	425.3E6	461.4E6	806.588	701.836
10) T	Pentachlo...	8.670	8.456	5445.3E6	4656.8E6	774.444	613.541
11) T	2,4,5-TP ...	9.220	8.818	2206.9E6	2081.5E6	805.092	698.226
12) T	2,4,5-T	9.504	9.196	2043.8E6	2058.7E6	803.435	697.344
13) T	2,4-DB	10.057	9.703	276.1E6	275.3E6	797.995	725.330
14) T	DINOSEB	11.223	10.039	1626.5E6	1543.5E6	795.668	702.700
15) T	Picloram	11.037	11.019	2264.2E6	2631.2E6	746.038	646.153
16) T	DCPA	11.487	10.970	2720.9E6	2696.7E6	784.956	696.279

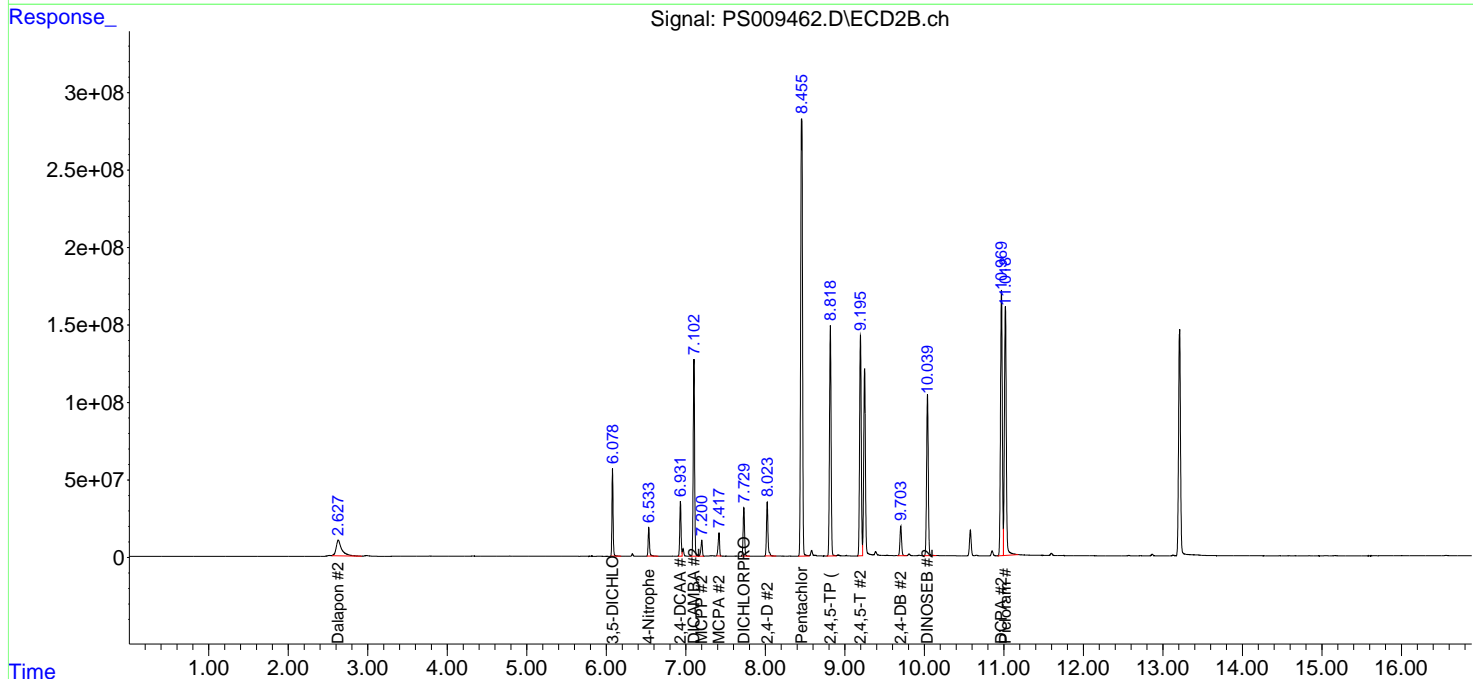
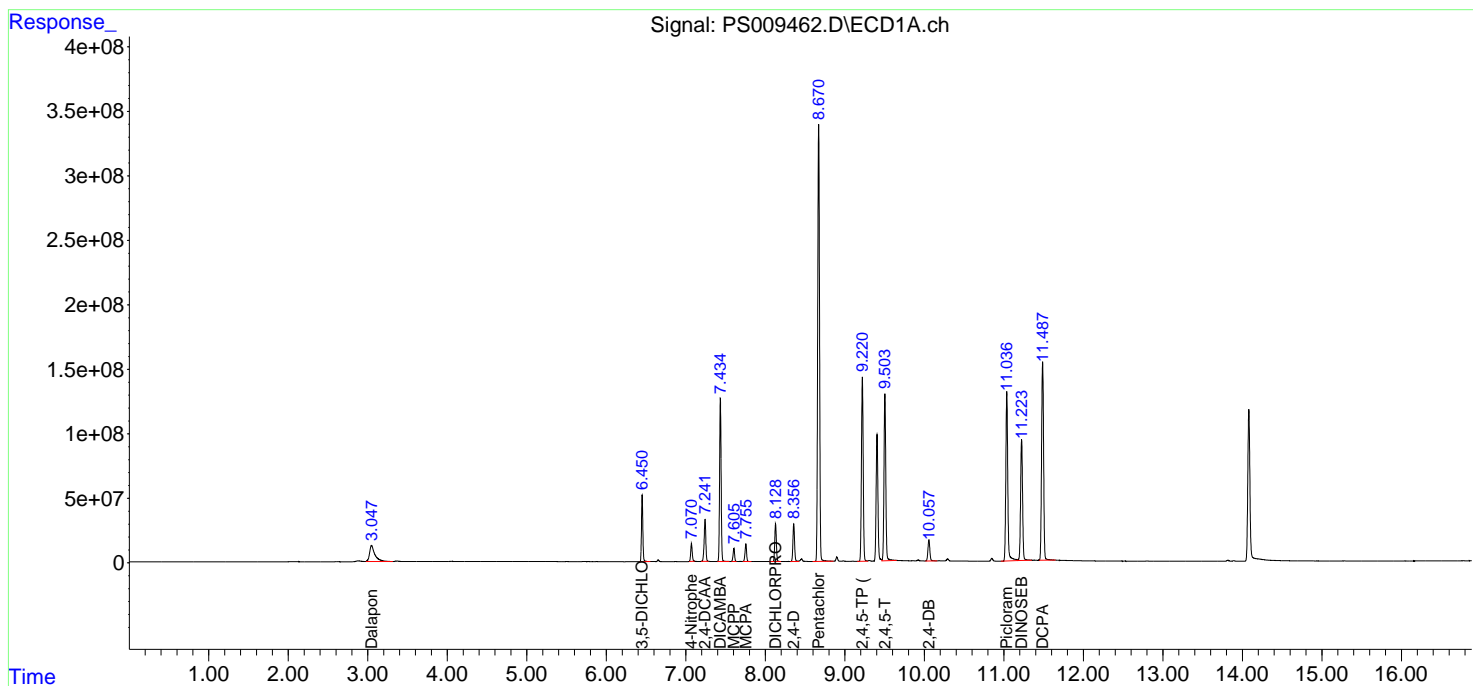
(f)=RT Delta > 1/2 Window (#)=Amounts differ by > 25% (m)=manual int.

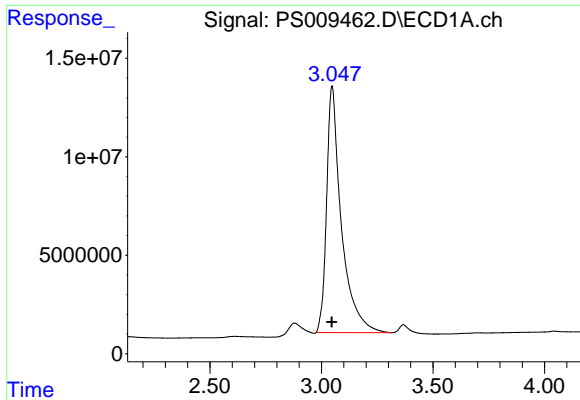
Data Path : Z:\pestpcbsrv\HPCHEM1\ECD_S\Data\PS032720\
 Data File : PS009462.D
 Signal(s) : Signal #1: ECD1A.ch Signal #2: ECD2B.ch
 Acq On : 27 Mar 2020 11:35
 Operator : DD\AJ
 Sample : HSTDCCC750
 Misc :
 ALS Vial : 3 Sample Multiplier: 1

Instrument :
 ECD_S
 ClientSampleId :
 HSTDCCC750

Integration File signal 1: autoint1.e
 Integration File signal 2: autoint2.e
 Quant Time: Mar 27 15:43:09 2020
 Quant Method : Z:\pestpcbsrv\HPCHEM1\ECD_S\Method\PS031120.M
 Quant Title : 8080.M
 QLast Update : Thu Mar 12 07:13:24 2020
 Response via : Initial Calibration
 Integrator: ChemStation

Volume Inj. : 2 µl
 Signal #1 Phase : Rtx-CLPesticides Signal #2 Phase: Rtx-CLPesticides2
 Signal #1 Info : 30M x 0.32mm x0.5 Signal #2 Info : 30M x 0.32mm x 0.25µm

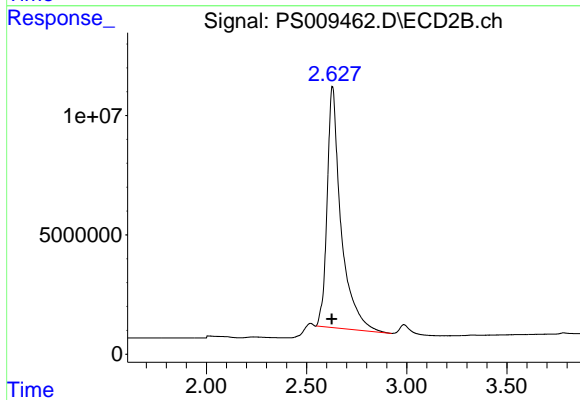




#1 Dalapon

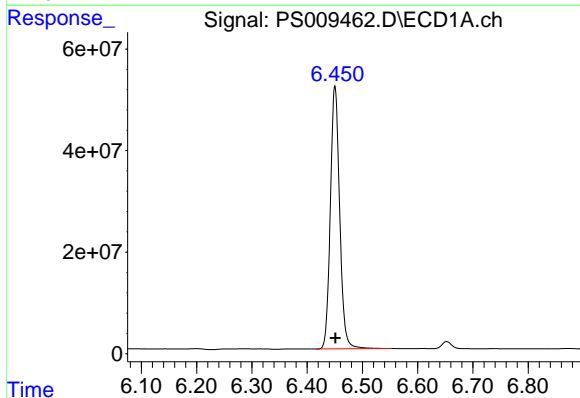
R.T.: 3.047 min
Delta R.T.: 0.001 min
Response: 575745772
Conc: 738.29 ng/ml

Instrument :
ECD_S
ClientSampleId :
HSTDCCC750



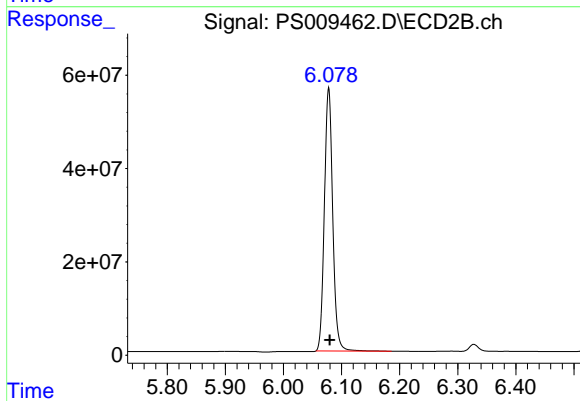
#1 Dalapon

R.T.: 2.628 min
Delta R.T.: 0.002 min
Response: 486989597
Conc: 618.51 ng/ml



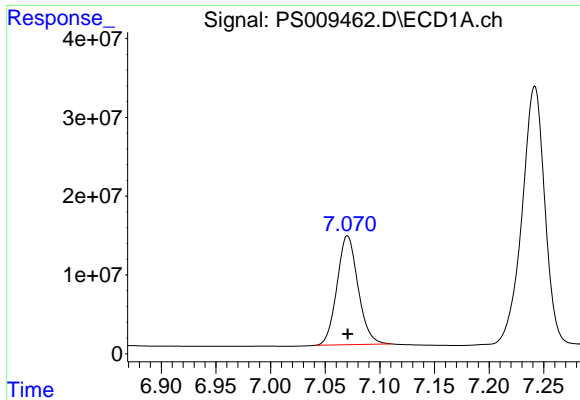
#2 3,5-DICHLOROBENZOIC ACID

R.T.: 6.450 min
Delta R.T.: 0.000 min
Response: 606049868
Conc: 802.93 ng/ml



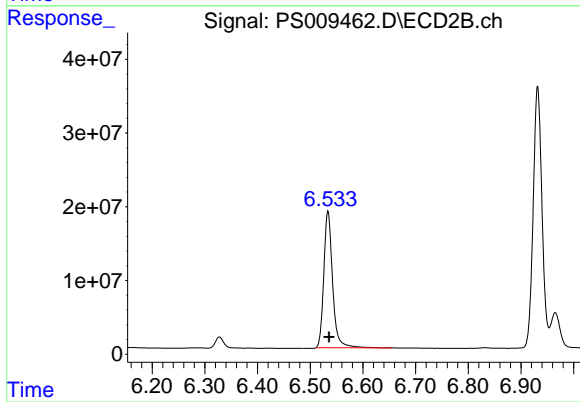
#2 3,5-DICHLOROBENZOIC ACID

R.T.: 6.078 min
Delta R.T.: -0.002 min
Response: 560764055
Conc: 689.49 ng/ml

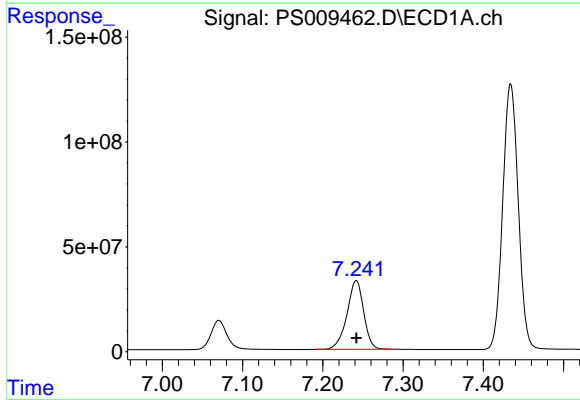


#3 4-Nitrophenol
R.T.: 7.070 min
Delta R.T.: 0.000 min
Response: 185746160
Conc: 778.12 ng/ml

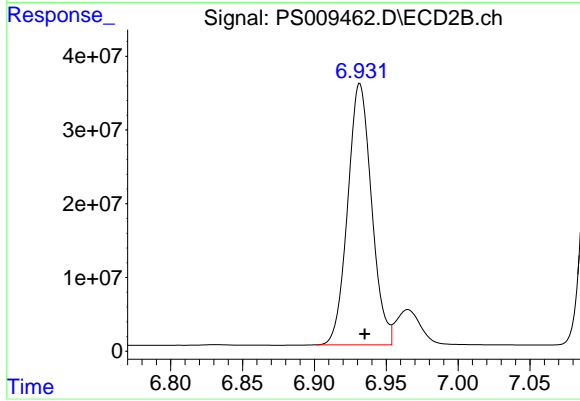
Instrument :
ECD_S
ClientSampleId :
HSTDCCC750



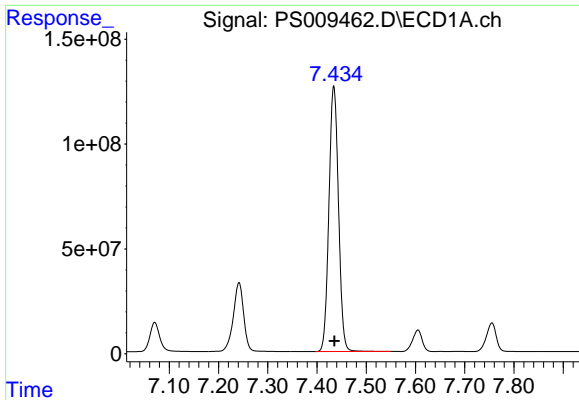
#3 4-Nitrophenol
R.T.: 6.534 min
Delta R.T.: -0.002 min
Response: 215453926
Conc: 677.11 ng/ml



#4 2,4-DCAA
R.T.: 7.242 min
Delta R.T.: 0.000 min
Response: 473499773
Conc: 855.97 ng/ml

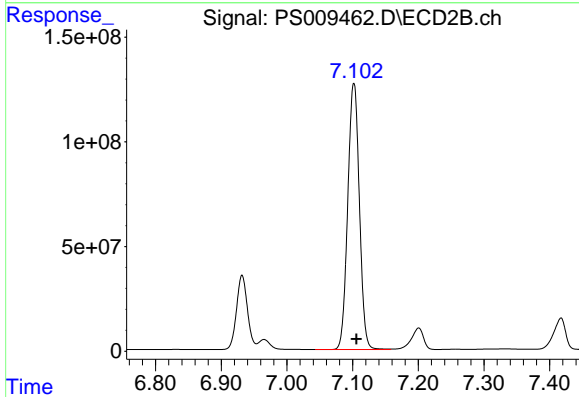


#4 2,4-DCAA
R.T.: 6.932 min
Delta R.T.: -0.003 min
Response: 409992705
Conc: 746.53 ng/ml

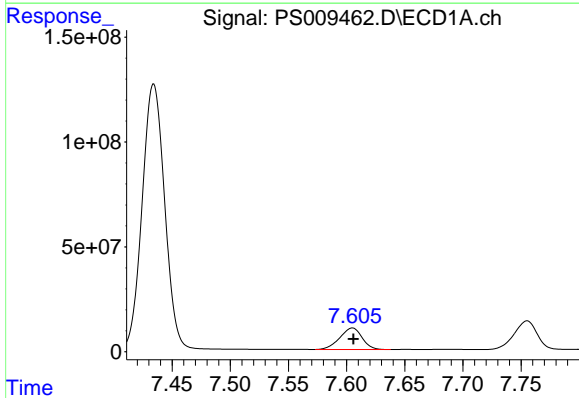


#5 DICAMBA
 R.T.: 7.434 min
 Delta R.T.: -0.001 min
 Response: 1707186998
 Conc: 802.19 ng/ml

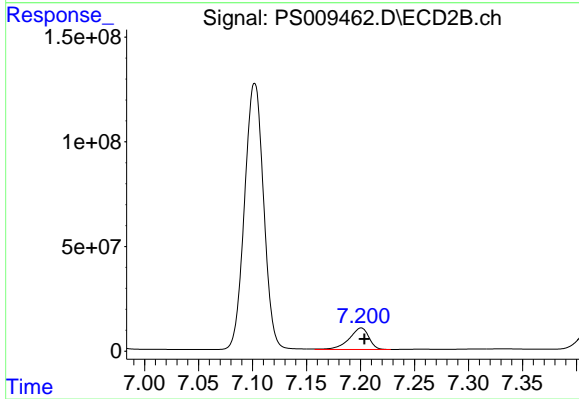
Instrument :
 ECD_S
 ClientSampleId :
 HSTDCCC750



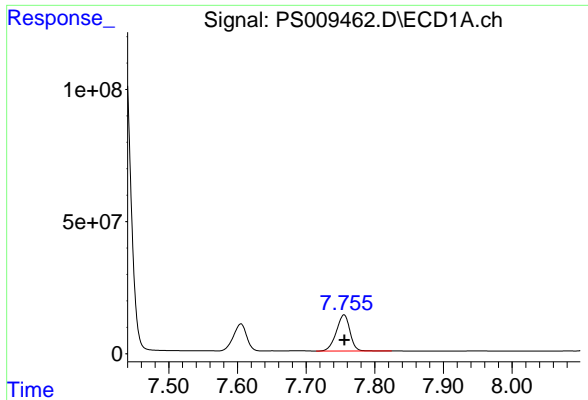
#5 DICAMBA
 R.T.: 7.102 min
 Delta R.T.: -0.004 min
 Response: 1561899336
 Conc: 680.39 ng/ml



#6 MCP
 R.T.: 7.605 min
 Delta R.T.: 0.000 min
 Response: 136768739
 Conc: 55.58 ug/ml



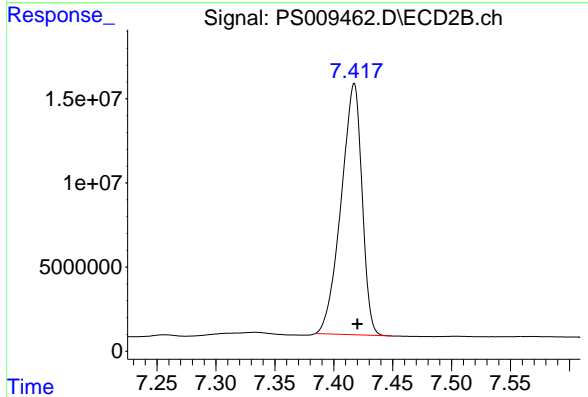
#6 MCP
 R.T.: 7.201 min
 Delta R.T.: -0.003 min
 Response: 130470411
 Conc: 71.73 ug/ml



#7 MCPA

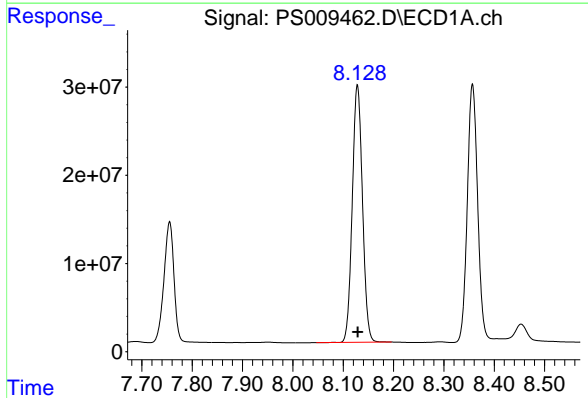
R.T.: 7.755 min
 Delta R.T.: 0.000 min
 Response: 188984471
 Conc: 62.05 ug/ml

Instrument :
 ECD_S
 ClientSampleId :
 HSTDCCC750



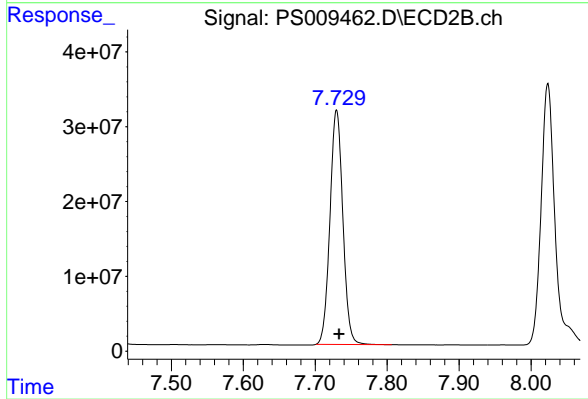
#7 MCPA

R.T.: 7.417 min
 Delta R.T.: -0.003 min
 Response: 184427224
 Conc: 68.34 ug/ml



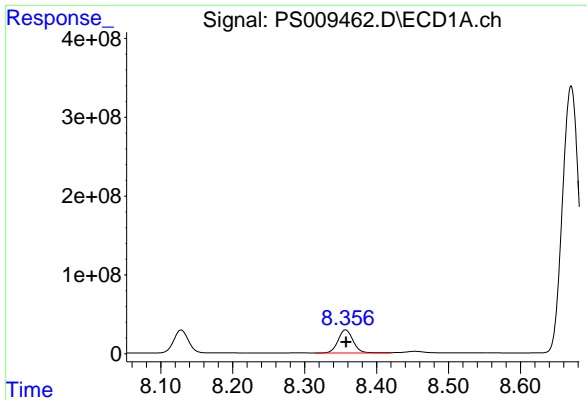
#8 DICHLORPROP

R.T.: 8.128 min
 Delta R.T.: 0.000 min
 Response: 410175787
 Conc: 795.31 ng/ml



#8 DICHLORPROP

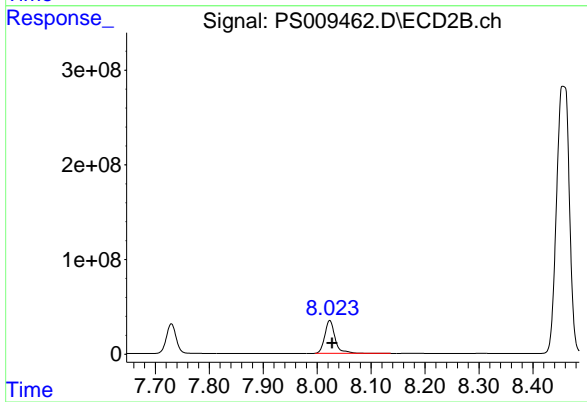
R.T.: 7.730 min
 Delta R.T.: -0.003 min
 Response: 390447499
 Conc: 703.73 ng/ml



#9 2,4-D

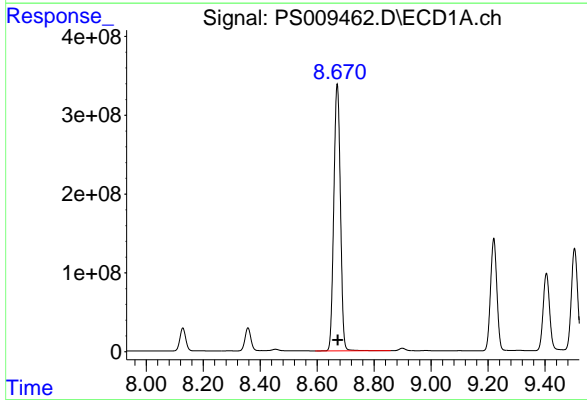
R.T.: 8.357 min
 Delta R.T.: -0.001 min
 Response: 425253368
 Conc: 806.59 ng/ml

Instrument :
 ECD_S
 ClientSampleId :
 HSTDCCC750



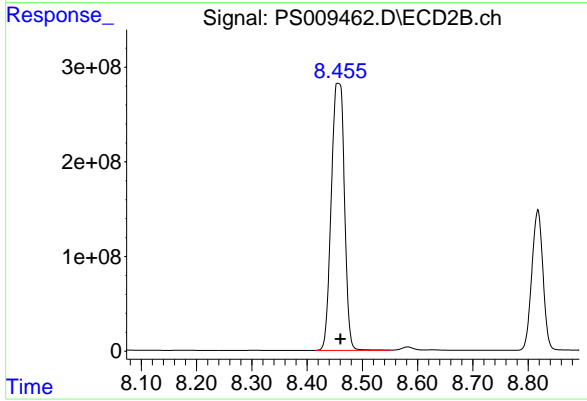
#9 2,4-D

R.T.: 8.023 min
 Delta R.T.: -0.004 min
 Response: 461359752
 Conc: 701.84 ng/ml



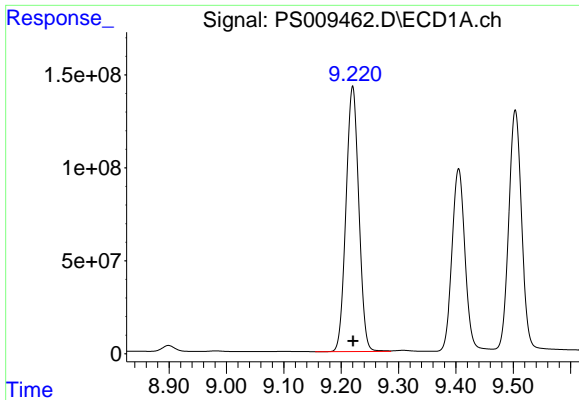
#10 Pentachlorophenol

R.T.: 8.670 min
 Delta R.T.: -0.001 min
 Response: 5445300330
 Conc: 774.44 ng/ml



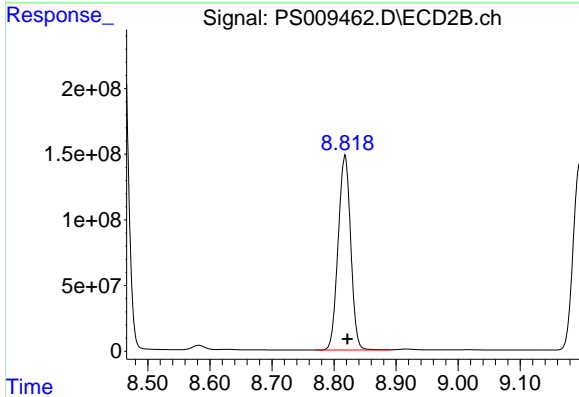
#10 Pentachlorophenol

R.T.: 8.456 min
 Delta R.T.: -0.004 min
 Response: 4656764996
 Conc: 613.54 ng/ml

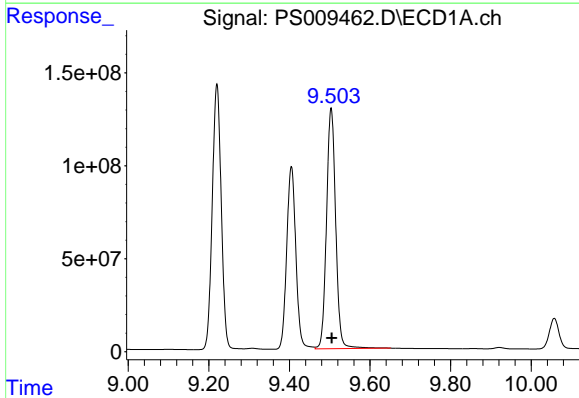


#11 2,4,5-TP (SILVEX)
 R.T.: 9.220 min
 Delta R.T.: 0.000 min
 Response: 2206921359
 Conc: 805.09 ng/ml

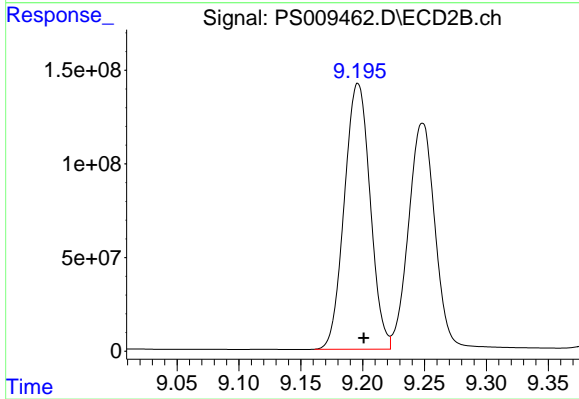
Instrument :
 ECD_S
 ClientSampleId :
 HSTDCCC750



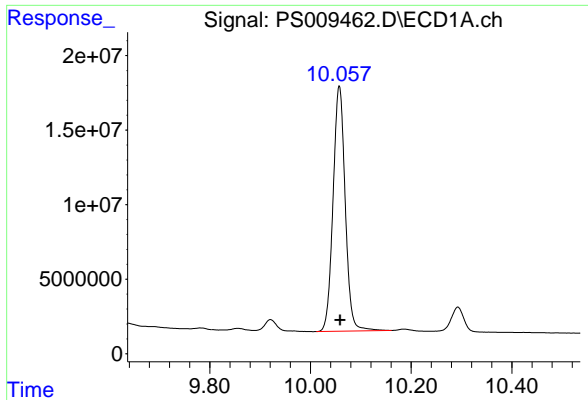
#11 2,4,5-TP (SILVEX)
 R.T.: 8.818 min
 Delta R.T.: -0.004 min
 Response: 2081493223
 Conc: 698.23 ng/ml



#12 2,4,5-T
 R.T.: 9.504 min
 Delta R.T.: -0.001 min
 Response: 2043820542
 Conc: 803.44 ng/ml

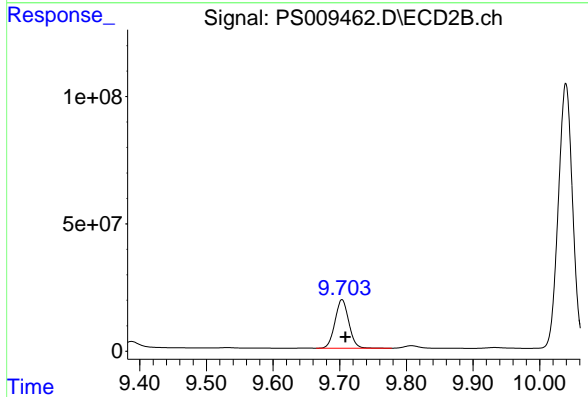


#12 2,4,5-T
 R.T.: 9.196 min
 Delta R.T.: -0.005 min
 Response: 2058684577
 Conc: 697.34 ng/ml

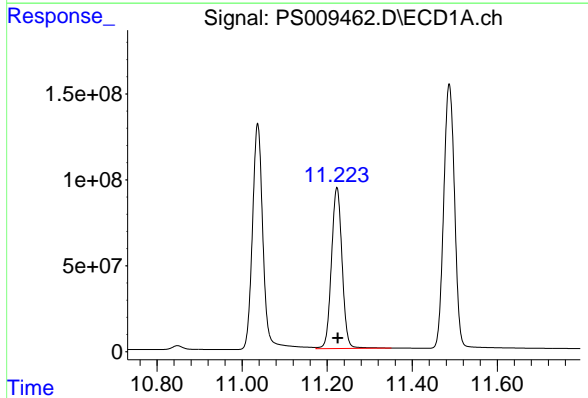


#13 2,4-DB
 R.T.: 10.057 min
 Delta R.T.: -0.001 min
 Response: 276069908
 Conc: 797.99 ng/ml

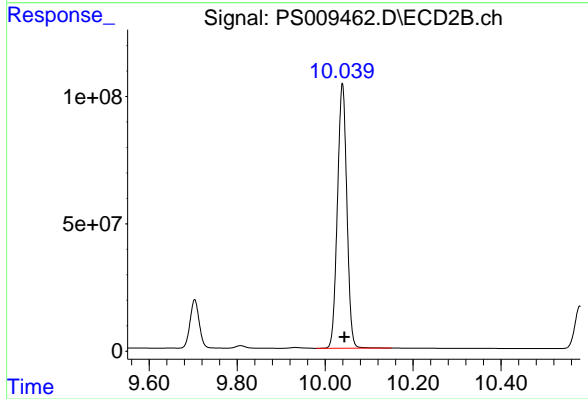
Instrument :
 ECD_S
 ClientSampleId :
 HSTDCCC750



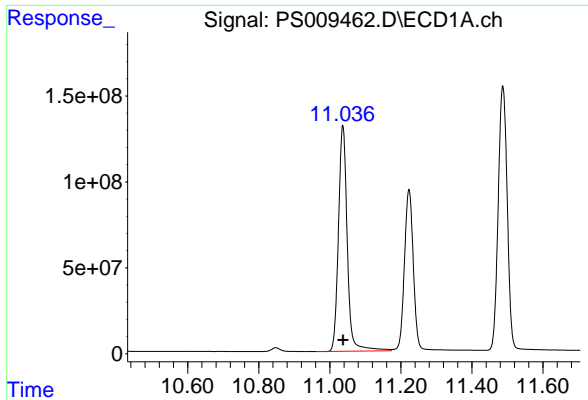
#13 2,4-DB
 R.T.: 9.703 min
 Delta R.T.: -0.005 min
 Response: 275347004
 Conc: 725.33 ng/ml



#14 DINOSEB
 R.T.: 11.223 min
 Delta R.T.: -0.002 min
 Response: 1626466109
 Conc: 795.67 ng/ml

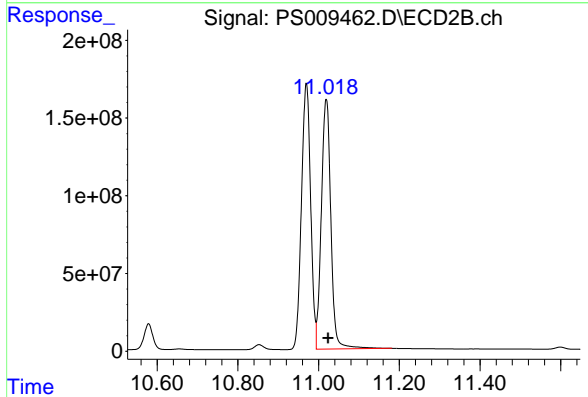


#14 DINOSEB
 R.T.: 10.039 min
 Delta R.T.: -0.004 min
 Response: 1543465383
 Conc: 702.70 ng/ml

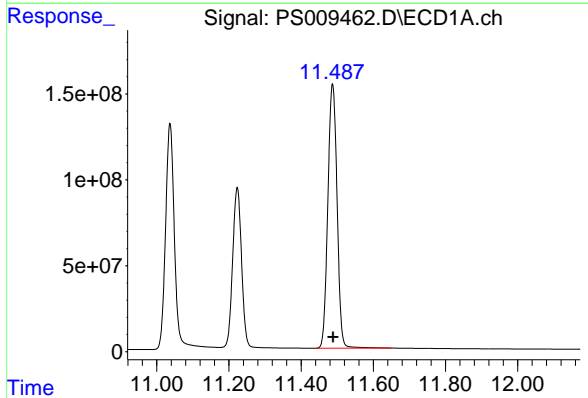


#15 Picloram
 R.T.: 11.037 min
 Delta R.T.: 0.000 min
 Response: 2264170991
 Conc: 746.04 ng/ml

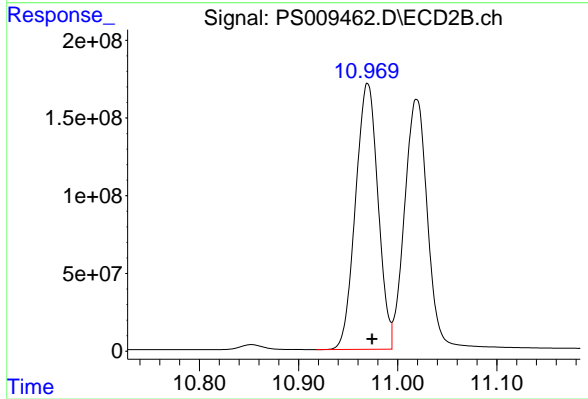
Instrument :
 ECD_S
 ClientSampleId :
 HSTDCCC750



#15 Picloram
 R.T.: 11.019 min
 Delta R.T.: -0.004 min
 Response: 2631249753
 Conc: 646.15 ng/ml



#16 DCPA
 R.T.: 11.487 min
 Delta R.T.: -0.002 min
 Response: 2720854891
 Conc: 784.96 ng/ml



#16 DCPA
 R.T.: 10.970 min
 Delta R.T.: -0.004 min
 Response: 2696716529
 Conc: 696.28 ng/ml