

Data Path : Z:\pestpcbsrv\HPCHEM1\ECD\_S\Data\PS032720\  
 Data File : PS009490.D  
 Signal(s) : Signal #1: ECD1A.ch Signal #2: ECD2B.ch  
 Acq On : 28 Mar 2020 01:15  
 Operator : DD\AJ  
 Sample : L2035-03  
 Misc :  
 ALS Vial : 27 Sample Multiplier: 1

Instrument :  
 ECD\_S  
 ClientSampleId :  
 FK-GF-02-054-B

Integration File signal 1: autoint1.e  
 Integration File signal 2: autoint2.e  
 Quant Time: Mar 28 05:51:39 2020  
 Quant Method : Z:\pestpcbsrv\HPCHEM1\ECD\_S\Method\PS031120.M  
 Quant Title : 8080.M  
 QLast Update : Thu Mar 12 07:13:24 2020  
 Response via : Initial Calibration  
 Integrator: ChemStation

Volume Inj. : 2 µl  
 Signal #1 Phase : Rtx-CLPesticides Signal #2 Phase: Rtx-CLPesticides2  
 Signal #1 Info : 30M x 0.32mm x0.5 Signal #2 Info : 30M x 0.32mm x 0.25µm

	Compound	RT#1	RT#2	Resp#1	Resp#2	ng/ml	ng/ml
-----							
System Monitoring Compounds							
4) S	2,4-DCAA	7.241	6.930	129.5E6	87922331	234.133	160.092 #
Target Compounds							
2) T	3,5-DICHL...	6.520	6.107	5121888	38103831	6.786	46.851 #
3) T	4-Nitroph...	0.000	6.563	0	4413470	N.D.	13.870
5) T	DICAMBA	7.367	7.077	41651076	4521901	19.571	1.970 #
6) T	MCPP	7.598	0.000	8125404	0	3.302	N.D. #
7) T	MCPA	7.735	7.472	8287468	11486434	2.721	4.256 #
8) T	DICHLORPROP	8.141	7.748	20228741	35471295	39.223	63.933 #
10) T	Pentachlo...	8.704	8.453	28105925	7652990	3.997	1.008 #
11) T	2,4,5-TP ...	0.000	8.859	0	1699882	N.D.	<MDL
12) T	2,4,5-T	9.446	9.186	37736583	12022045	14.834	4.072 #
13) T	2,4-DB	10.101	9.721	9165476	32530998	26.493	85.695 #
14) T	DINOSEB	11.188	10.051	37288506	33073475	18.242	15.057
15) T	Picloram	11.008	11.046	13285378	6417761	4.377	1.576 #
16) T	DCPA	11.489	10.966	1062777	8355180	<MDL	2.157 #

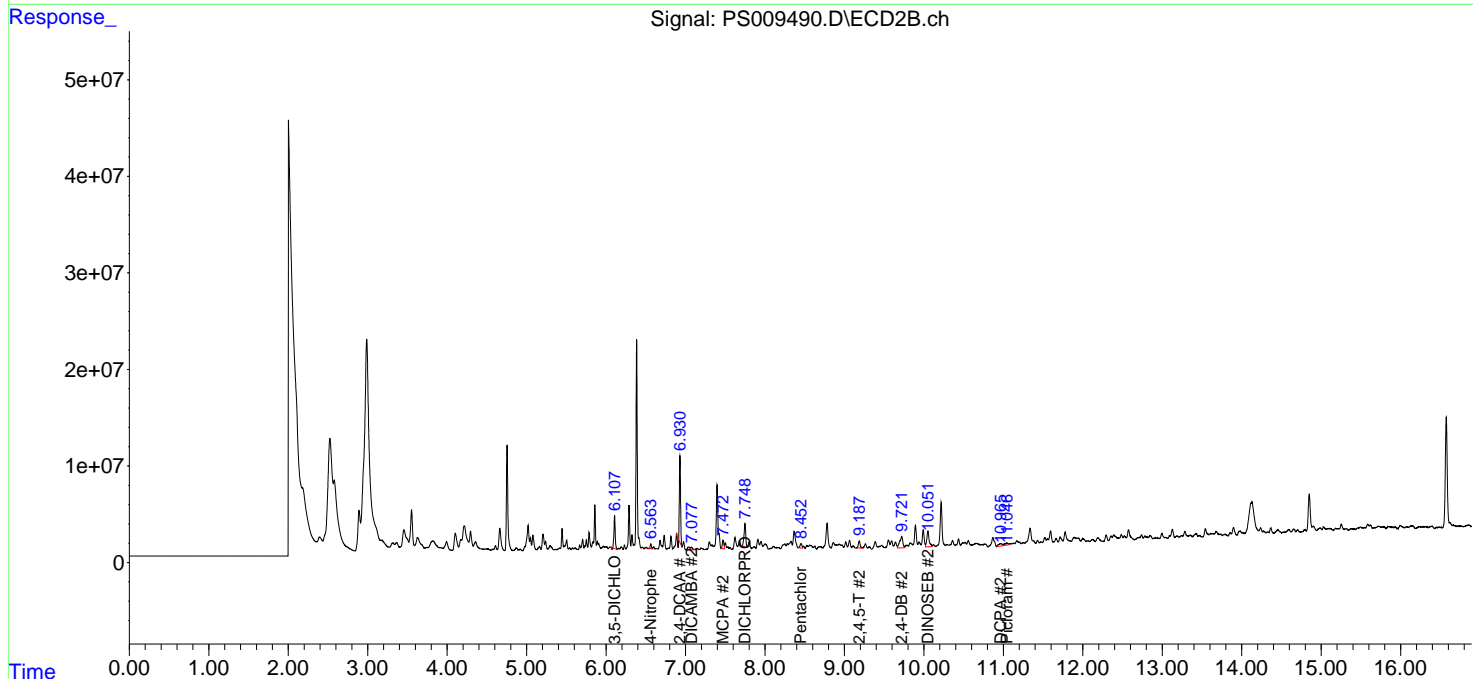
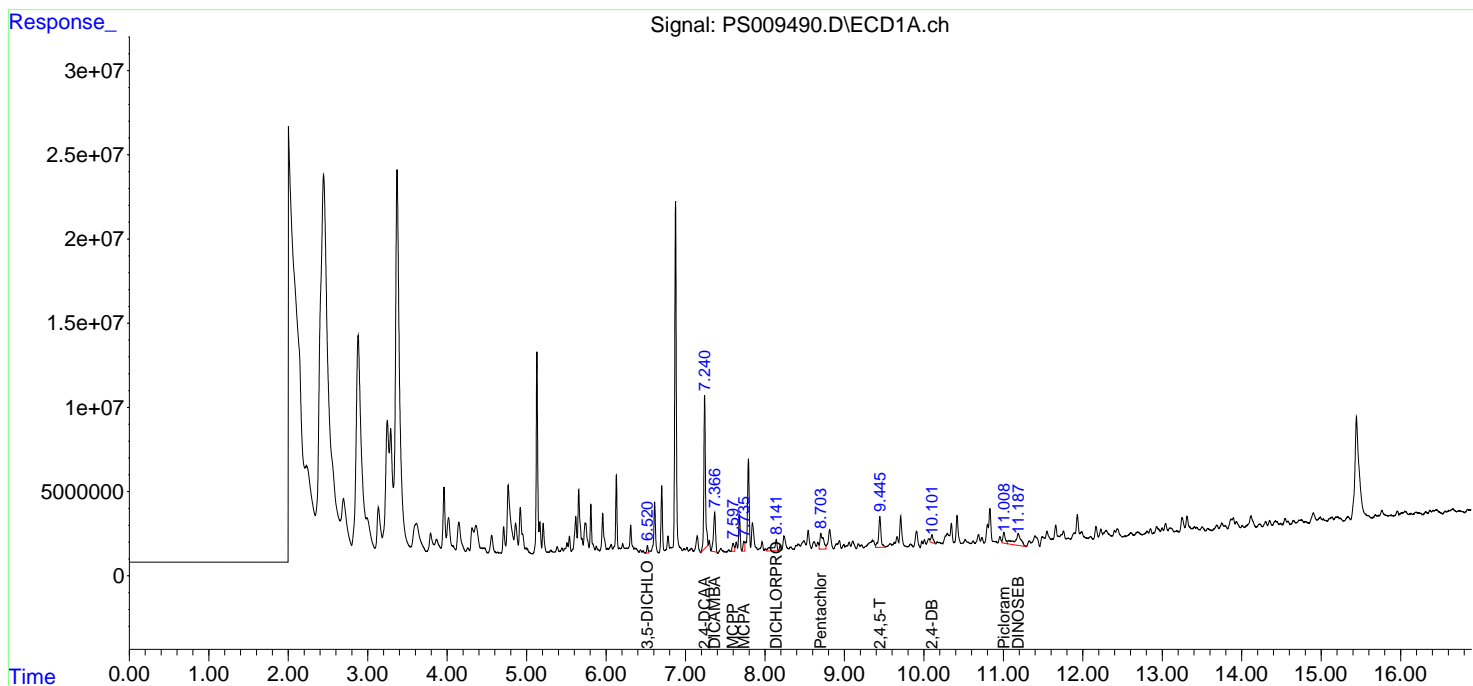
(f)=RT Delta > 1/2 Window (#)=Amounts differ by > 25% (m)=manual int.

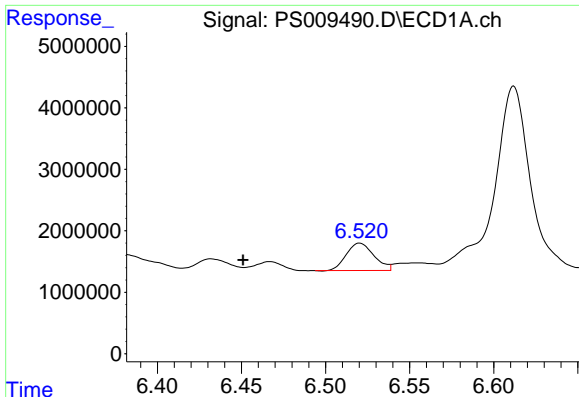
Data Path : Z:\pestpcbsrv\HPCHEM1\ECD\_S\Data\PS032720\  
 Data File : PS009490.D  
 Signal(s) : Signal #1: ECD1A.ch Signal #2: ECD2B.ch  
 Acq On : 28 Mar 2020 01:15  
 Operator : DD\AJ  
 Sample : L2035-03  
 Misc :  
 ALS Vial : 27 Sample Multiplier: 1

Instrument :  
 ECD\_S  
 ClientSampled :  
 FK-GF-02-054-B

Integration File signal 1: autoint1.e  
 Integration File signal 2: autoint2.e  
 Quant Time: Mar 28 05:51:39 2020  
 Quant Method : Z:\pestpcbsrv\HPCHEM1\ECD\_S\Method\PS031120.M  
 Quant Title : 8080.M  
 QLast Update : Thu Mar 12 07:13:24 2020  
 Response via : Initial Calibration  
 Integrator: ChemStation

Volume Inj. : 2 µl  
 Signal #1 Phase : Rtx-CLPesticides Signal #2 Phase: Rtx-CLPesticides2  
 Signal #1 Info : 30M x 0.32mm x0.5 Signal #2 Info : 30M x 0.32mm x 0.25µm

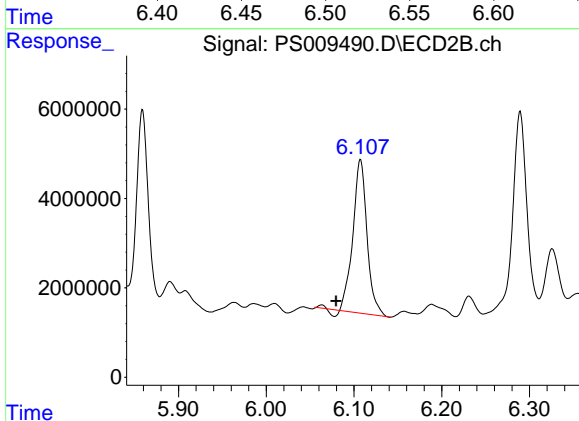




#2 3,5-DICHLOROBENZOIC ACID

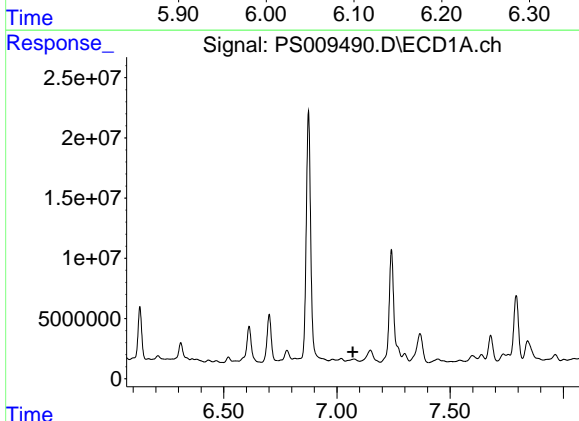
R.T.: 6.520 min  
 Delta R.T.: 0.070 min  
 Response: 5121888  
 Conc: 6.79 ng/ml

Instrument :  
 ECD\_S  
 ClientSampleId :  
 FK-GF-02-054-B



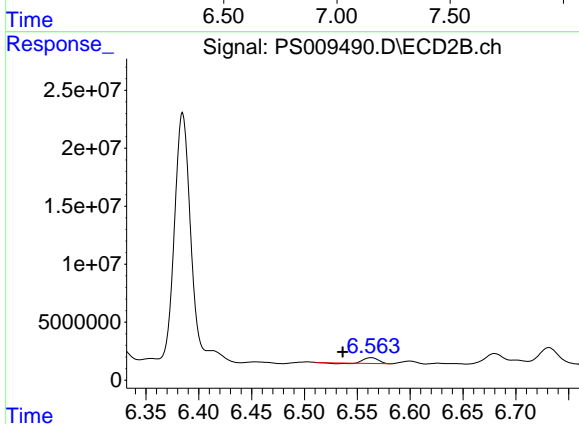
#2 3,5-DICHLOROBENZOIC ACID

R.T.: 6.107 min  
 Delta R.T.: 0.028 min  
 Response: 38103831  
 Conc: 46.85 ng/ml



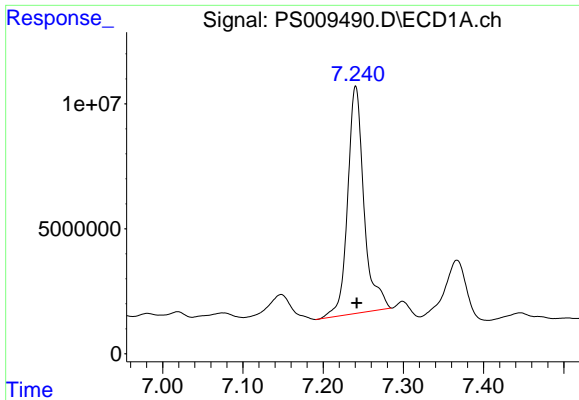
#3 4-Nitrophenol

R.T.: 0.000 min  
 Exp R.T. : 7.071 min  
 Response: 0  
 Conc: N.D.



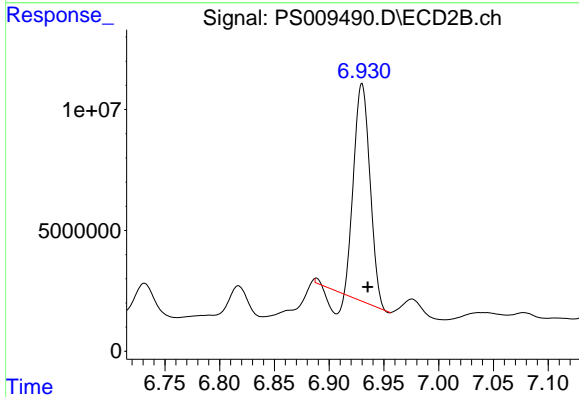
#3 4-Nitrophenol

R.T.: 6.563 min  
 Delta R.T.: 0.027 min  
 Response: 4413470  
 Conc: 13.87 ng/ml

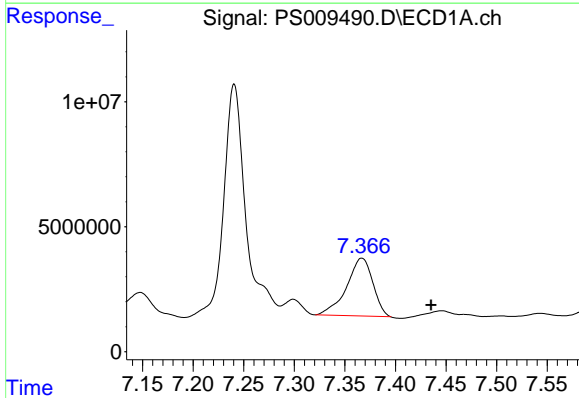


#4 2,4-DCAA  
R.T.: 7.241 min  
Delta R.T.: -0.001 min  
Response: 129515129  
Conc: 234.13 ng/ml

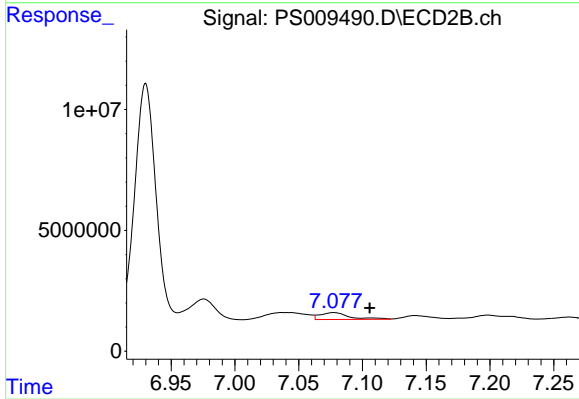
Instrument :  
ECD\_S  
ClientSampled :  
FK-GF-02-054-B



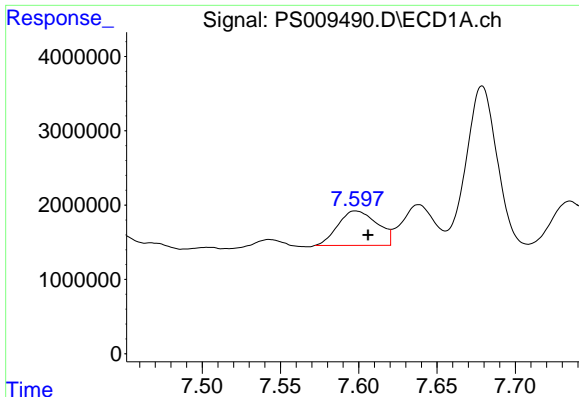
#4 2,4-DCAA  
R.T.: 6.930 min  
Delta R.T.: -0.005 min  
Response: 87922331  
Conc: 160.09 ng/ml



#5 DICAMBA  
R.T.: 7.367 min  
Delta R.T.: -0.069 min  
Response: 41651076  
Conc: 19.57 ng/ml



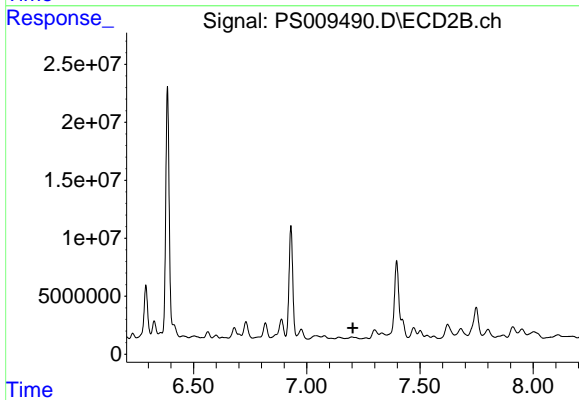
#5 DICAMBA  
R.T.: 7.077 min  
Delta R.T.: -0.028 min  
Response: 4521901  
Conc: 1.97 ng/ml



#6 MCPP

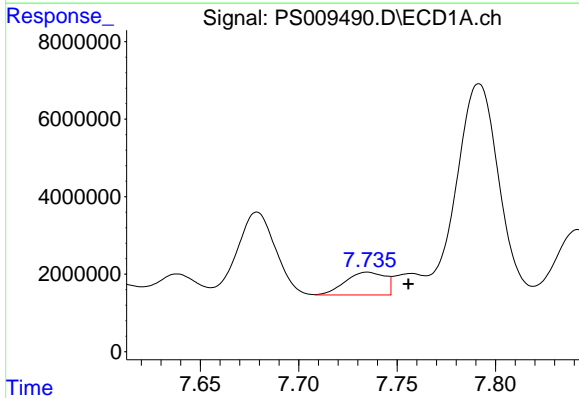
R.T.: 7.598 min  
 Delta R.T.: -0.008 min  
 Response: 8125404  
 Conc: 3.30 ug/ml

Instrument :  
 ECD\_S  
 ClientSampleId :  
 FK-GF-02-054-B



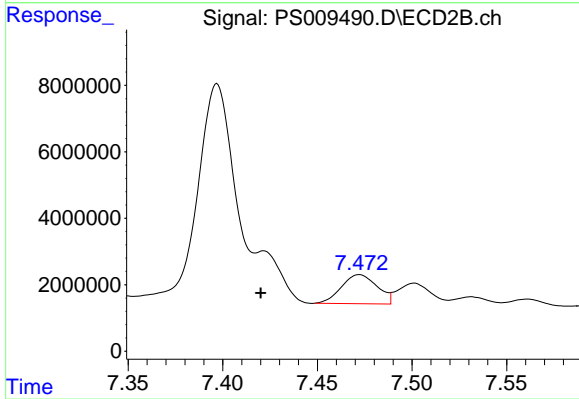
#6 MCPP

R.T.: 0.000 min  
 Exp R.T. : 7.204 min  
 Response: 0  
 Conc: N.D.



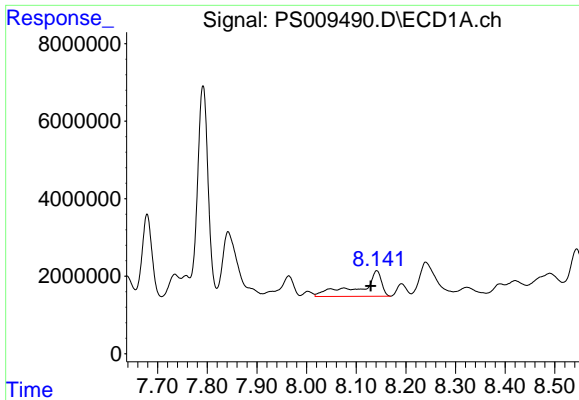
#7 MCPA

R.T.: 7.735 min  
 Delta R.T.: -0.021 min  
 Response: 8287468  
 Conc: 2.72 ug/ml



#7 MCPA

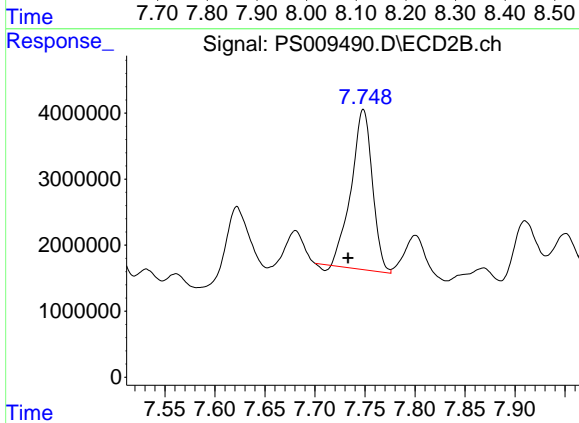
R.T.: 7.472 min  
 Delta R.T.: 0.052 min  
 Response: 11486434  
 Conc: 4.26 ug/ml



#8 DICHLORPROP

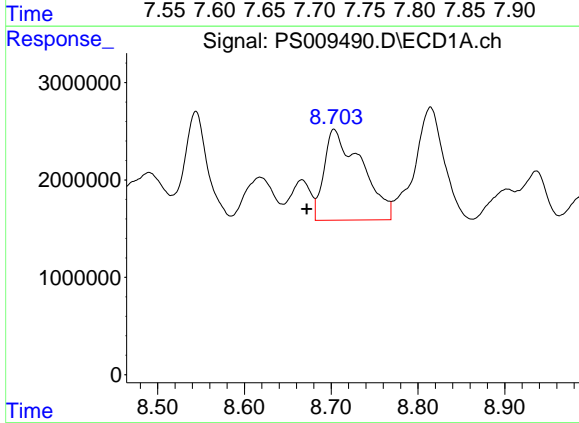
R.T.: 8.141 min  
 Delta R.T.: 0.012 min  
 Response: 20228741  
 Conc: 39.22 ng/ml

Instrument :  
 ECD\_S  
 ClientSampleId :  
 FK-GF-02-054-B



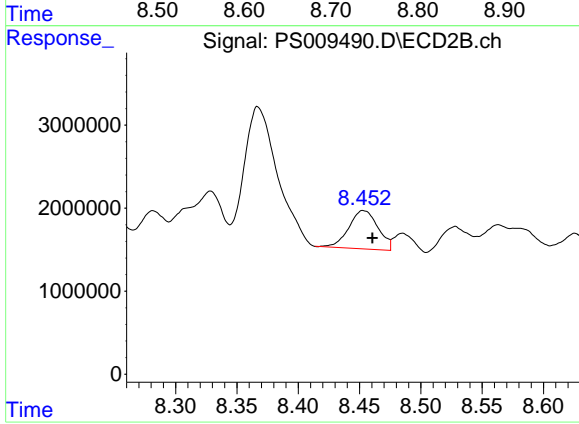
#8 DICHLORPROP

R.T.: 7.748 min  
 Delta R.T.: 0.015 min  
 Response: 35471295  
 Conc: 63.93 ng/ml



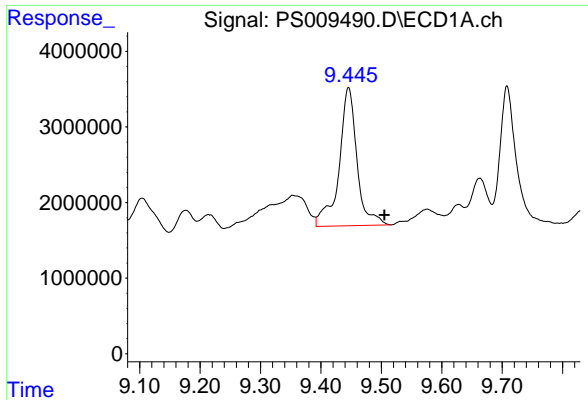
#10 Pentachlorophenol

R.T.: 8.704 min  
 Delta R.T.: 0.032 min  
 Response: 28105925  
 Conc: 4.00 ng/ml



#10 Pentachlorophenol

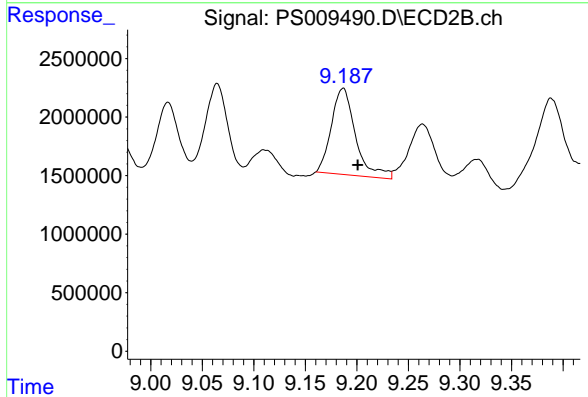
R.T.: 8.453 min  
 Delta R.T.: -0.007 min  
 Response: 7652990  
 Conc: 1.01 ng/ml



#12 2,4,5-T

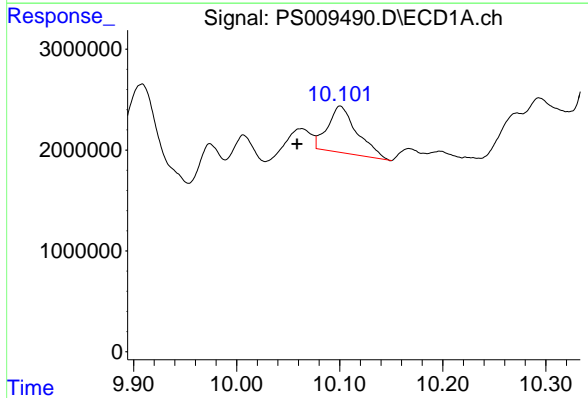
R.T.: 9.446 min  
 Delta R.T.: -0.059 min  
 Response: 37736583  
 Conc: 14.83 ng/ml

Instrument :  
 ECD\_S  
 ClientSampleId :  
 FK-GF-02-054-B



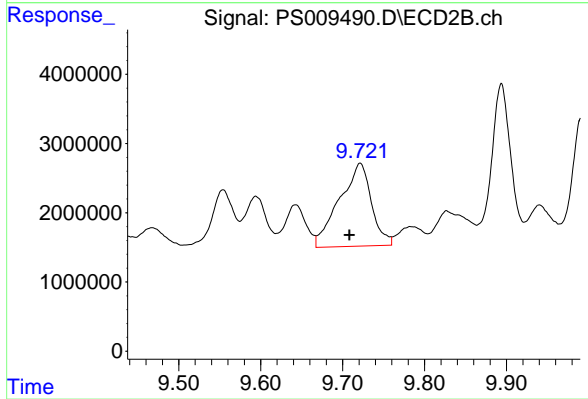
#12 2,4,5-T

R.T.: 9.186 min  
 Delta R.T.: -0.014 min  
 Response: 12022045  
 Conc: 4.07 ng/ml



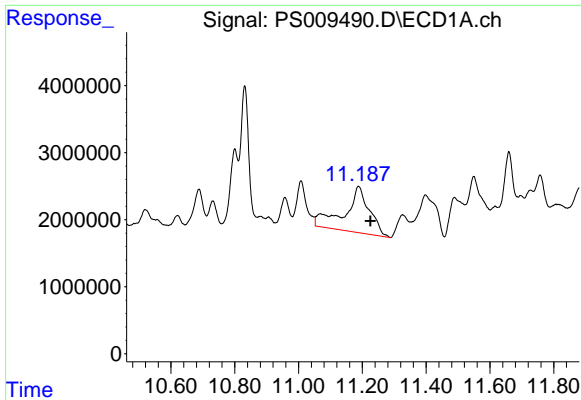
#13 2,4-DB

R.T.: 10.101 min  
 Delta R.T.: 0.042 min  
 Response: 9165476  
 Conc: 26.49 ng/ml



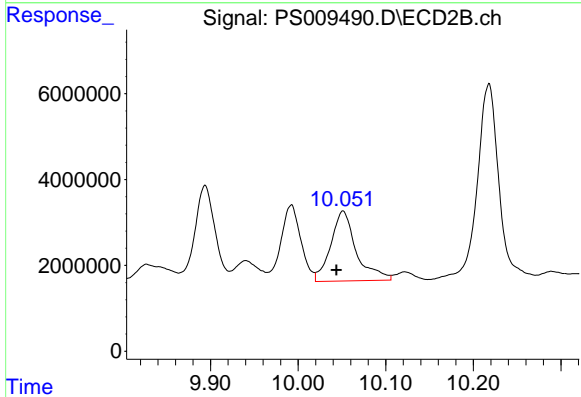
#13 2,4-DB

R.T.: 9.721 min  
 Delta R.T.: 0.013 min  
 Response: 32530998  
 Conc: 85.69 ng/ml

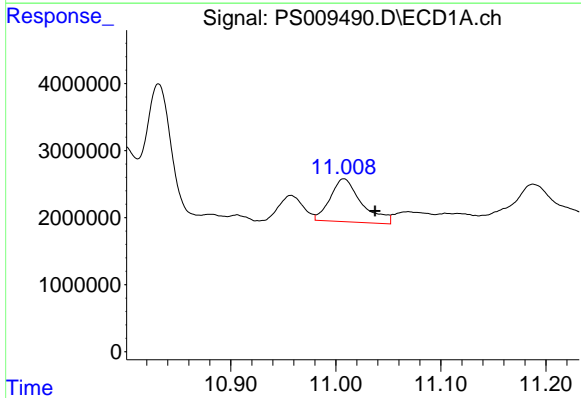


#14 DINOSEB  
 R.T.: 11.188 min  
 Delta R.T.: -0.037 min  
 Response: 37288506  
 Conc: 18.24 ng/ml

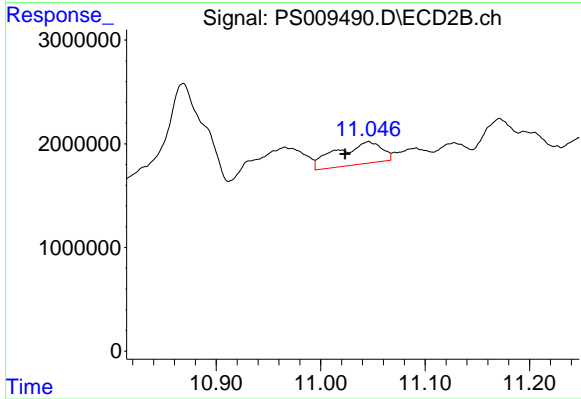
Instrument :  
 ECD\_S  
 ClientSampled :  
 FK-GF-02-054-B



#14 DINOSEB  
 R.T.: 10.051 min  
 Delta R.T.: 0.008 min  
 Response: 33073475  
 Conc: 15.06 ng/ml

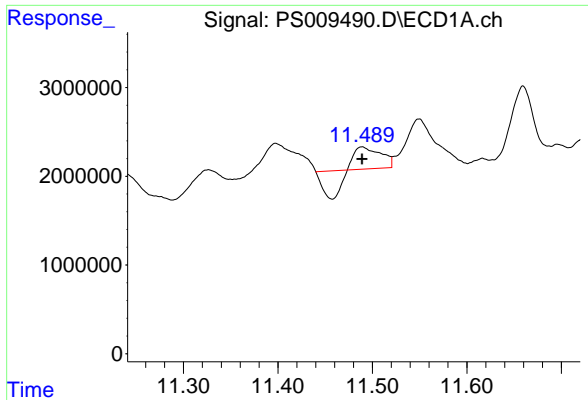


#15 Picloram  
 R.T.: 11.008 min  
 Delta R.T.: -0.030 min  
 Response: 13285378  
 Conc: 4.38 ng/ml



#15 Picloram  
 R.T.: 11.046 min  
 Delta R.T.: 0.022 min  
 Response: 6417761  
 Conc: 1.58 ng/ml

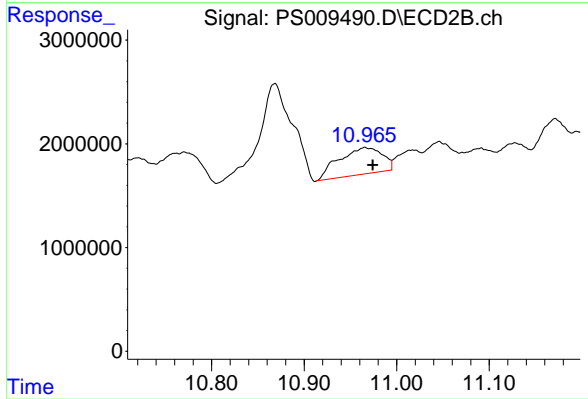




#16 DCPA

R.T.: 11.489 min  
Delta R.T.: 0.000 min  
Response: 1062777  
Conc: N.D.

Instrument :  
ECD\_S  
ClientSampled :  
FK-GF-02-054-B



#16 DCPA

R.T.: 10.966 min  
Delta R.T.: -0.008 min  
Response: 8355180  
Conc: 2.16 ng/ml