

Data Path : Z:\pestpcbsrv\HPCHEM1\ECD_S\Data\PS032720\
 Data File : PS009493.D
 Signal(s) : Signal #1: ECD1A.ch Signal #2: ECD2B.ch
 Acq On : 28 Mar 2020 02:24
 Operator : DD\AJ
 Sample : L2037-01MS
 Misc :
 ALS Vial : 30 Sample Multiplier: 1

Instrument :
 ECD_S
 ClientSampleId :
 FK-BPM-01-C4-D4-C4A-D4AMS

Integration File signal 1: autoint1.e
 Integration File signal 2: autoint2.e
 Quant Time: Mar 28 05:52:39 2020
 Quant Method : Z:\pestpcbsrv\HPCHEM1\ECD_S\Method\PS031120.M
 Quant Title : 8080.M
 QLast Update : Thu Mar 12 07:13:24 2020
 Response via : Initial Calibration
 Integrator: ChemStation

Volume Inj. : 2 µl
 Signal #1 Phase : Rtx-CLPesticides Signal #2 Phase: Rtx-CLPesticides2
 Signal #1 Info : 30M x 0.32mm x0.5 Signal #2 Info : 30M x 0.32mm x 0.25µm

	Compound	RT#1	RT#2	Resp#1	Resp#2	ng/ml	ng/ml

System Monitoring Compounds							
4) S	2,4-DCAA	7.241	6.931	162.5E6	141.9E6	293.713	258.430
Target Compounds							
1) T	Dalapon	3.044	2.627	146.6E6	228.8E6	188.046	290.582 #
2) T	3,5-DICHL...	6.450	6.077	206.0E6	189.2E6	272.934	232.590
3) T	4-Nitroph...	7.070	6.533	68240998	78378992	285.871	246.321
5) T	DICAMBA	7.434	7.101	536.9E6	511.4E6	252.288	222.758
6) T	MCP P	7.599	7.193	46016909	40118284	18.701	22.057
7) T	MCPA	7.747	7.403	81642008	85123454	26.806	31.543
8) T	DICHLORPROP	8.127	7.728	139.7E6	146.9E6	270.887	264.785
9) T	2,4-D	8.356	8.022	162.2E6	178.0E6	307.556	270.733
10) T	Pentachlo...	8.669	8.454	1902.9E6	1818.7E6	270.641	239.623
11) T	2,4,5-TP ...	9.218	8.816	734.8E6	722.4E6	268.065	242.329
12) T	2,4,5-T	9.503	9.195	632.7E6	698.3E6	248.732	236.523
13) T	2,4-DB	10.056	9.702	71438838	96868581	206.498	255.175
14) T	DINOSEB	11.221	10.038	97118024	86916912	47.510	39.571
15) T	Picloram	11.035	11.016	749.9E6	910.2E6	247.103	223.509
16) T	DCPA	11.487	10.967	609.5E6	717.8E6	175.832	185.345

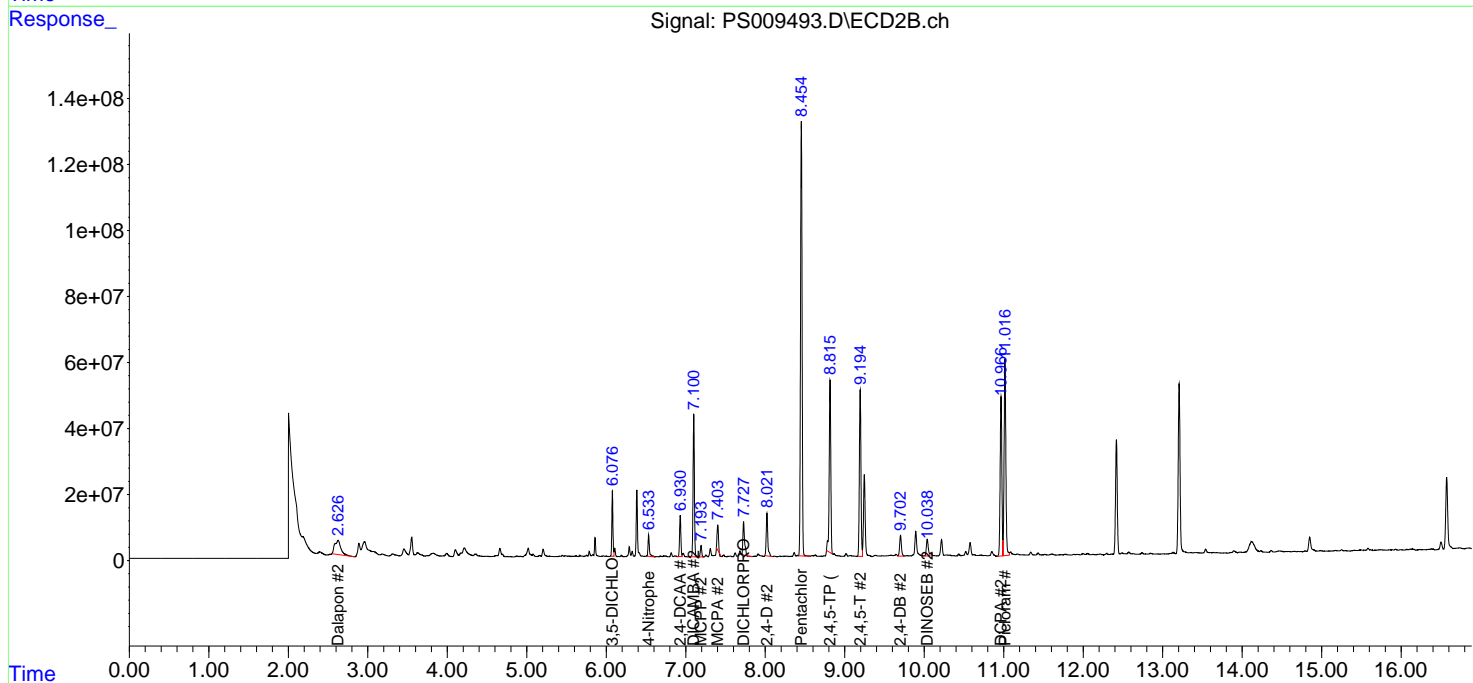
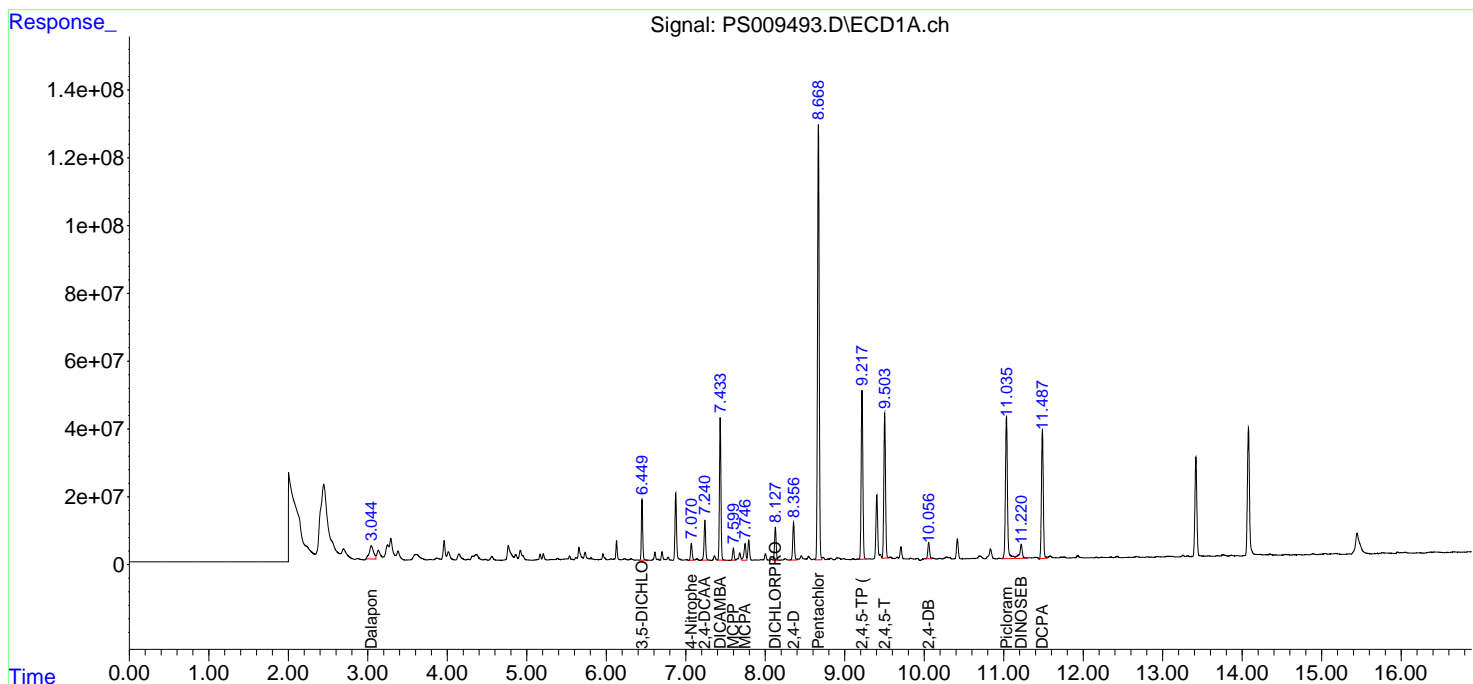
(f)=RT Delta > 1/2 Window (#)=Amounts differ by > 25% (m)=manual int.

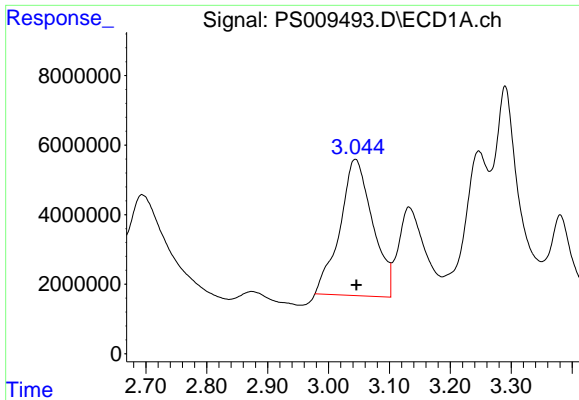
Data Path : Z:\pestpcbsrv\HPCHEM1\ECD_S\Data\PS032720\
 Data File : PS009493.D
 Signal(s) : Signal #1: ECD1A.ch Signal #2: ECD2B.ch
 Acq On : 28 Mar 2020 02:24
 Operator : DD\AJ
 Sample : L2037-01MS
 Misc :
 ALS Vial : 30 Sample Multiplier: 1

Instrument :
 ECD_S
 ClientSampleId :
 FK-BPM-01-C4-D4-C4A-D4AMS

Integration File signal 1: autoint1.e
 Integration File signal 2: autoint2.e
 Quant Time: Mar 28 05:52:39 2020
 Quant Method : Z:\pestpcbsrv\HPCHEM1\ECD_S\Method\PS031120.M
 Quant Title : 8080.M
 QLast Update : Thu Mar 12 07:13:24 2020
 Response via : Initial Calibration
 Integrator: ChemStation

Volume Inj. : 2 µl
 Signal #1 Phase : Rtx-CLPesticides Signal #2 Phase: Rtx-CLPesticides2
 Signal #1 Info : 30M x 0.32mm x0.5 Signal #2 Info : 30M x 0.32mm x 0.25µm

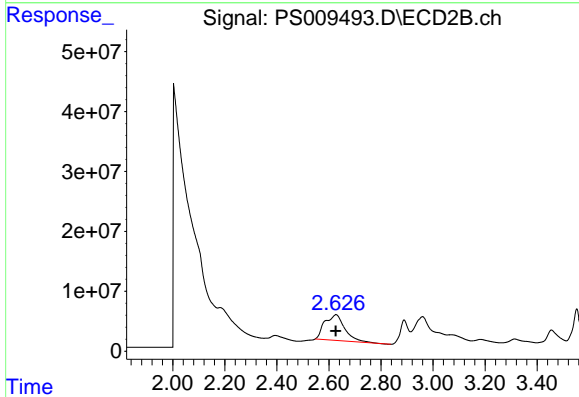




#1 Dalapon

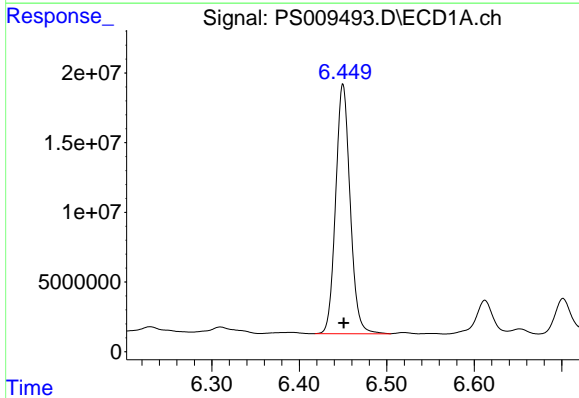
R.T.: 3.044 min
 Delta R.T.: -0.002 min
 Response: 146644694
 Conc: 188.05 ng/ml

Instrument :
 ECD_S
 ClientSampleId :
 FK-BPM-01-C4-D4-C4A-D4AMS



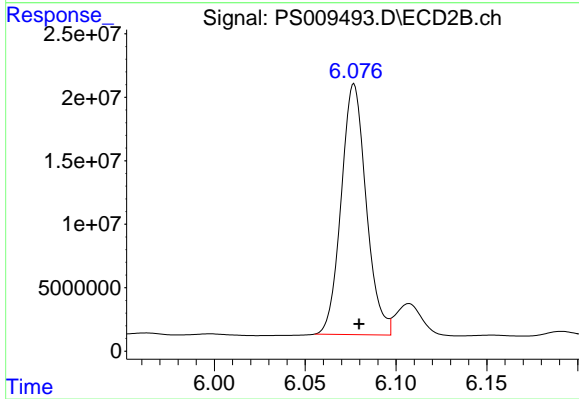
#1 Dalapon

R.T.: 2.627 min
 Delta R.T.: 0.000 min
 Response: 228793687
 Conc: 290.58 ng/ml



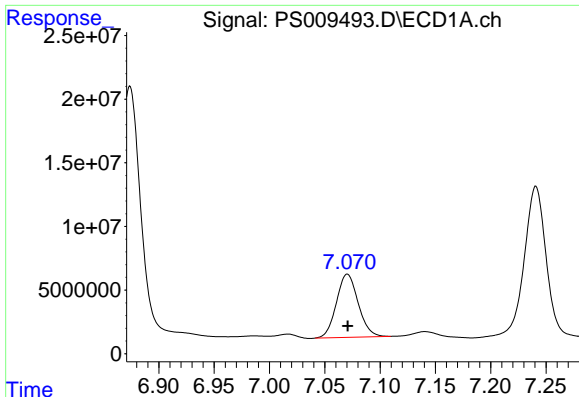
#2 3,5-DICHLOROBENZOIC ACID

R.T.: 6.450 min
 Delta R.T.: 0.000 min
 Response: 206009907
 Conc: 272.93 ng/ml



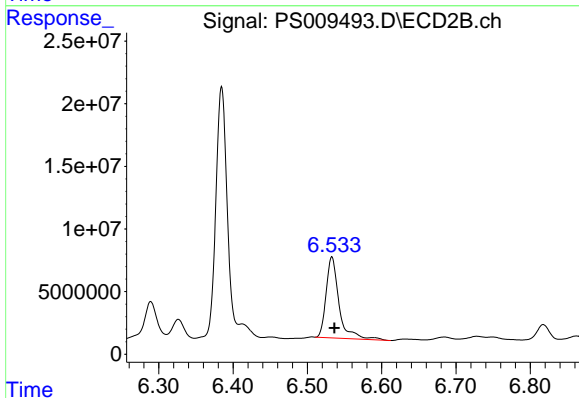
#2 3,5-DICHLOROBENZOIC ACID

R.T.: 6.077 min
 Delta R.T.: -0.003 min
 Response: 189166581
 Conc: 232.59 ng/ml

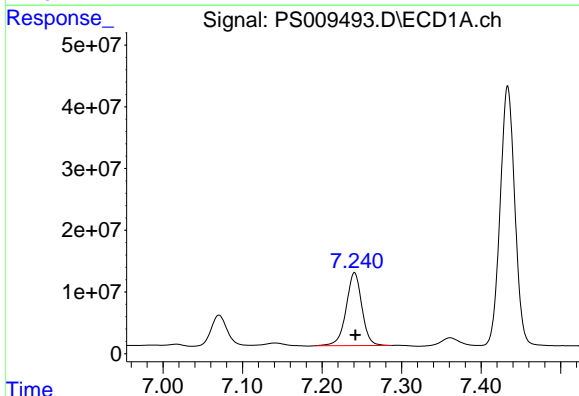


#3 4-Nitrophenol
R.T.: 7.070 min
Delta R.T.: 0.000 min
Response: 68240998
Conc: 285.87 ng/ml

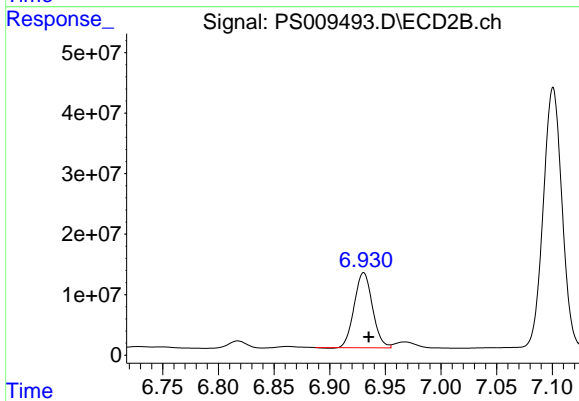
Instrument :
ECD_S
ClientSampleId :
FK-BPM-01-C4-D4-C4A-D4AMS



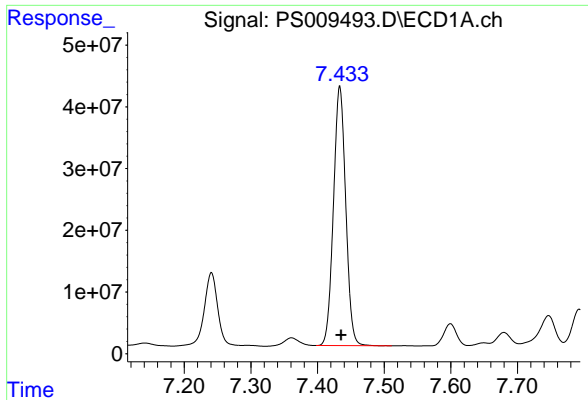
#3 4-Nitrophenol
R.T.: 6.533 min
Delta R.T.: -0.003 min
Response: 78378992
Conc: 246.32 ng/ml



#4 2,4-DCAA
R.T.: 7.241 min
Delta R.T.: -0.001 min
Response: 162473071
Conc: 293.71 ng/ml



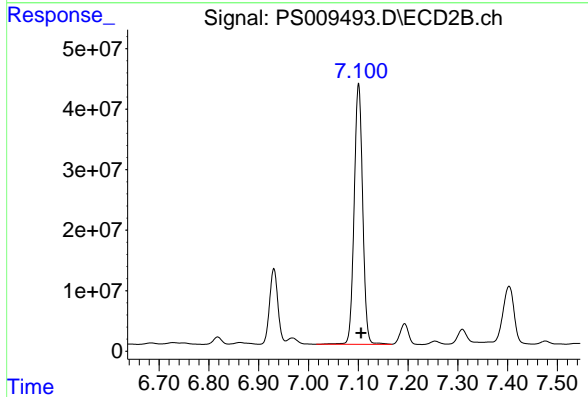
#4 2,4-DCAA
R.T.: 6.931 min
Delta R.T.: -0.005 min
Response: 141929181
Conc: 258.43 ng/ml



#5 DICAMBA

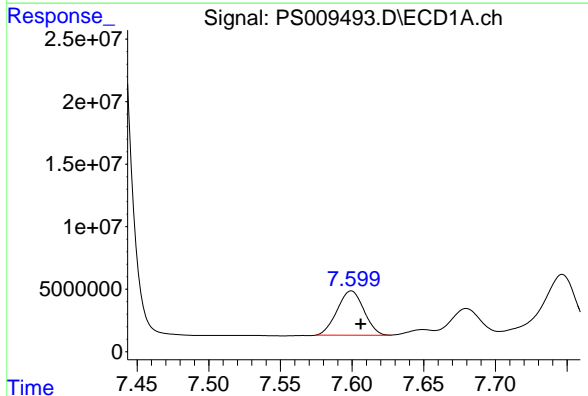
R.T.: 7.434 min
 Delta R.T.: -0.002 min
 Response: 536911495
 Conc: 252.29 ng/ml

Instrument :
 ECD_S
 ClientSampleId :
 FK-BPM-01-C4-D4-C4A-D4AMS



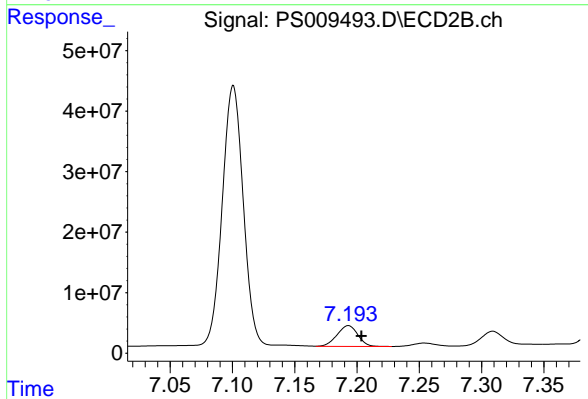
#5 DICAMBA

R.T.: 7.101 min
 Delta R.T.: -0.005 min
 Response: 511362591
 Conc: 222.76 ng/ml



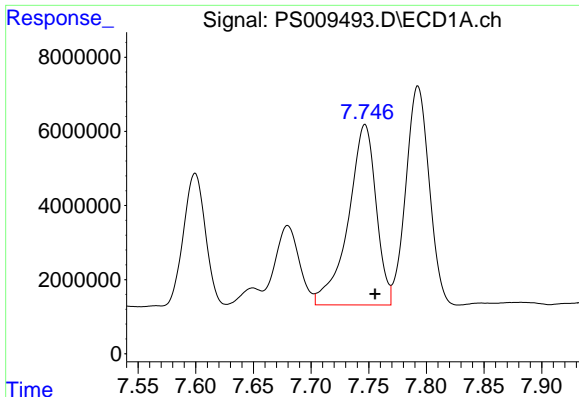
#6 MCPP

R.T.: 7.599 min
 Delta R.T.: -0.007 min
 Response: 46016909
 Conc: 18.70 ug/ml



#6 MCPP

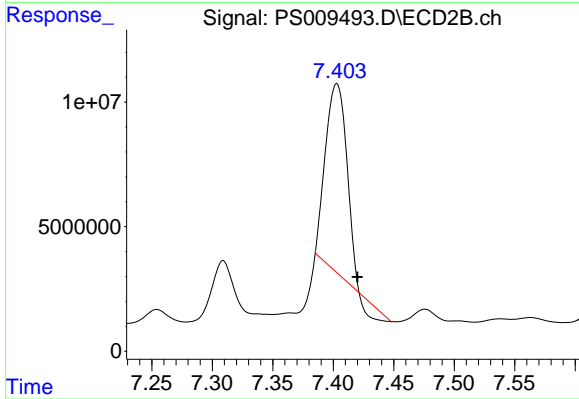
R.T.: 7.193 min
 Delta R.T.: -0.010 min
 Response: 40118284
 Conc: 22.06 ug/ml



#7 MCPA

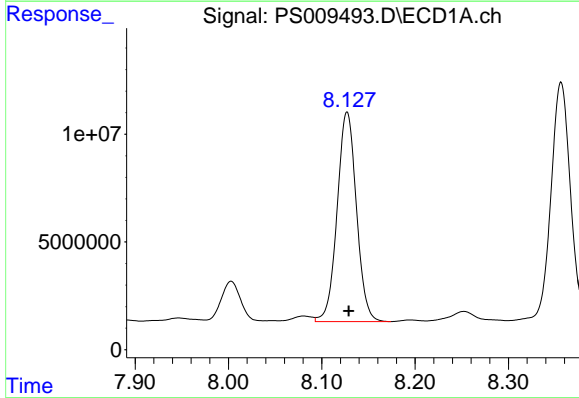
R.T.: 7.747 min
Delta R.T.: -0.009 min
Response: 81642008
Conc: 26.81 ug/ml

Instrument :
ECD_S
ClientSampleId :
FK-BPM-01-C4-D4-C4A-D4AMS



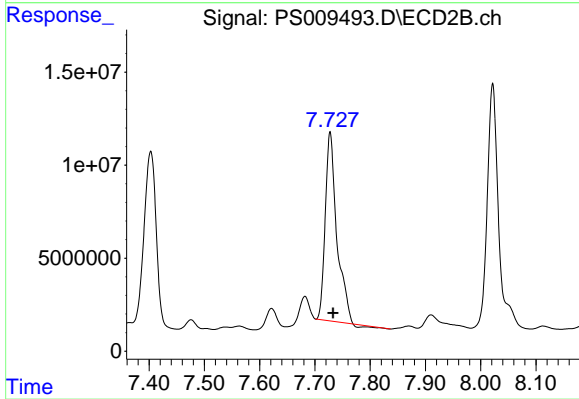
#7 MCPA

R.T.: 7.403 min
Delta R.T.: -0.017 min
Response: 85123454
Conc: 31.54 ug/ml



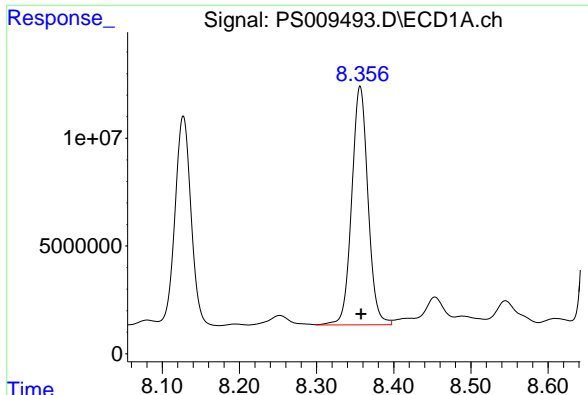
#8 DICHLORPROP

R.T.: 8.127 min
Delta R.T.: -0.002 min
Response: 139708020
Conc: 270.89 ng/ml



#8 DICHLORPROP

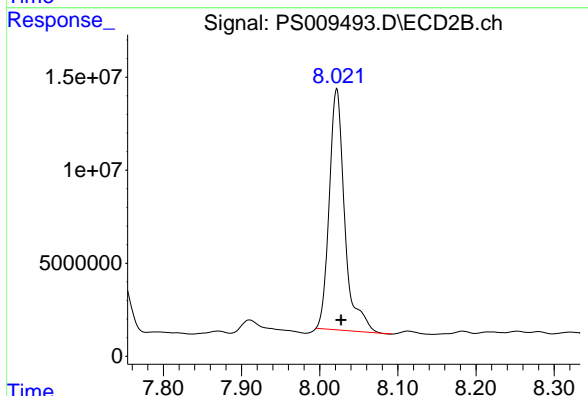
R.T.: 7.728 min
Delta R.T.: -0.005 min
Response: 146908426
Conc: 264.78 ng/ml



#9 2,4-D

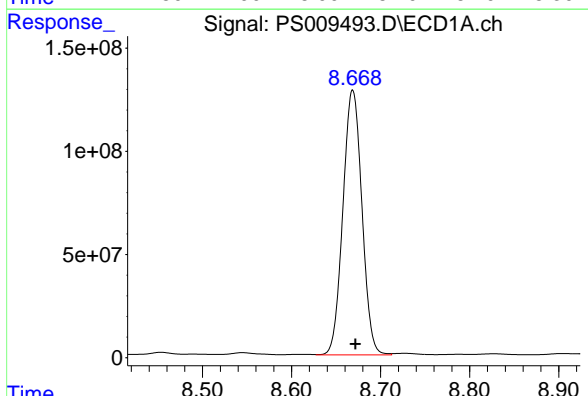
R.T.: 8.356 min
 Delta R.T.: -0.001 min
 Response: 162151152
 Conc: 307.56 ng/ml

Instrument :
 ECD_S
 ClientSampleId :
 FK-BPM-01-C4-D4-C4A-D4AMS



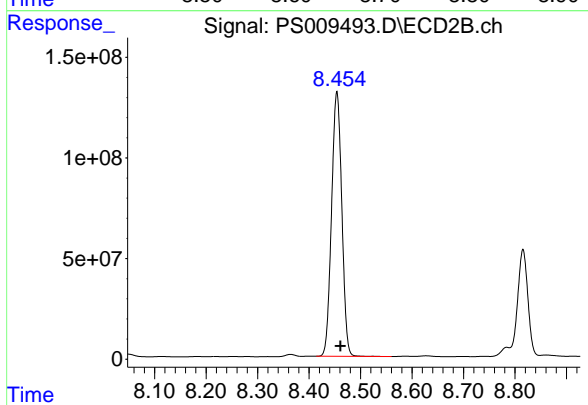
#9 2,4-D

R.T.: 8.022 min
 Delta R.T.: -0.006 min
 Response: 177969161
 Conc: 270.73 ng/ml



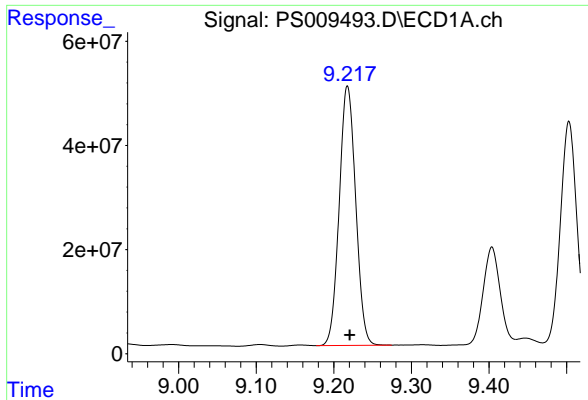
#10 Pentachlorophenol

R.T.: 8.669 min
 Delta R.T.: -0.003 min
 Response: 1902942979
 Conc: 270.64 ng/ml



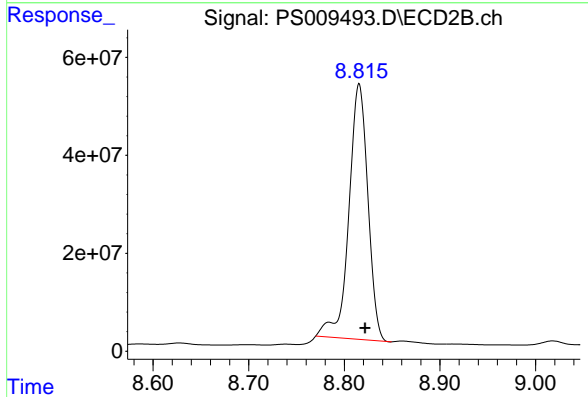
#10 Pentachlorophenol

R.T.: 8.454 min
 Delta R.T.: -0.007 min
 Response: 1818736476
 Conc: 239.62 ng/ml

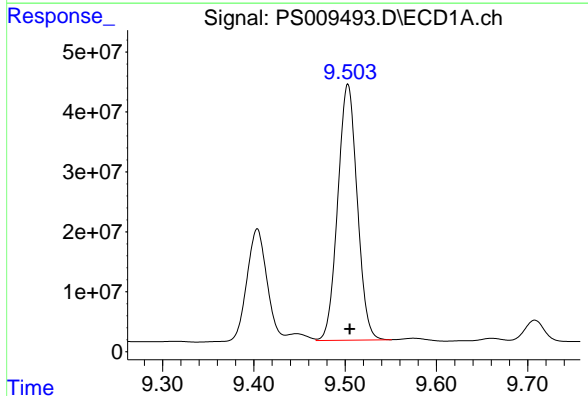


#11 2,4,5-TP (SILVEX)
 R.T.: 9.218 min
 Delta R.T.: -0.003 min
 Response: 734819864
 Conc: 268.06 ng/ml

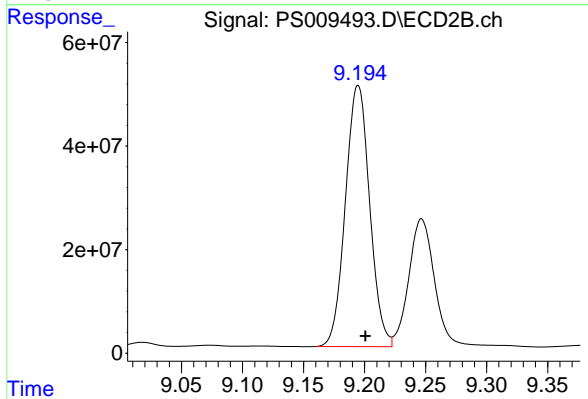
Instrument :
 ECD_S
 ClientSampleId :
 FK-BPM-01-C4-D4-C4A-D4AMS



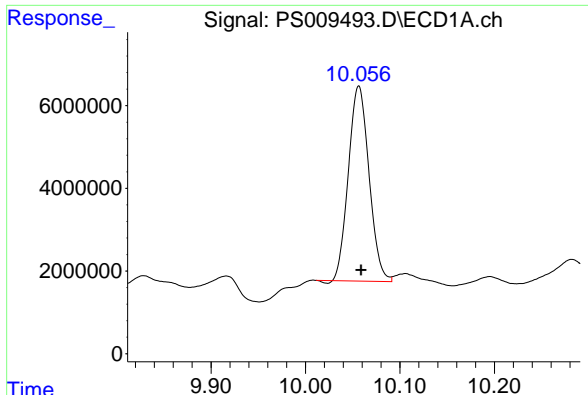
#11 2,4,5-TP (SILVEX)
 R.T.: 8.816 min
 Delta R.T.: -0.006 min
 Response: 722410883
 Conc: 242.33 ng/ml



#12 2,4,5-T
 R.T.: 9.503 min
 Delta R.T.: -0.002 min
 Response: 632738355
 Conc: 248.73 ng/ml



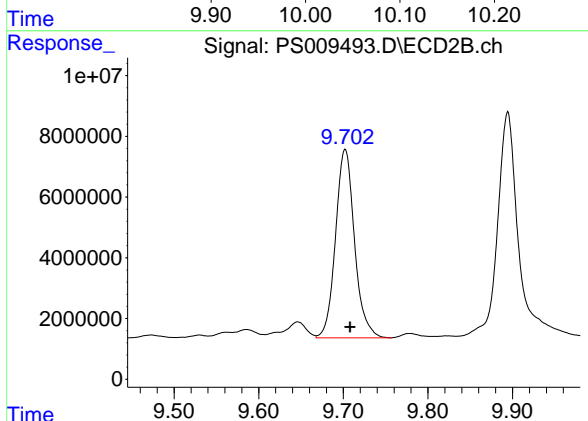
#12 2,4,5-T
 R.T.: 9.195 min
 Delta R.T.: -0.006 min
 Response: 698256848
 Conc: 236.52 ng/ml



#13 2,4-DB

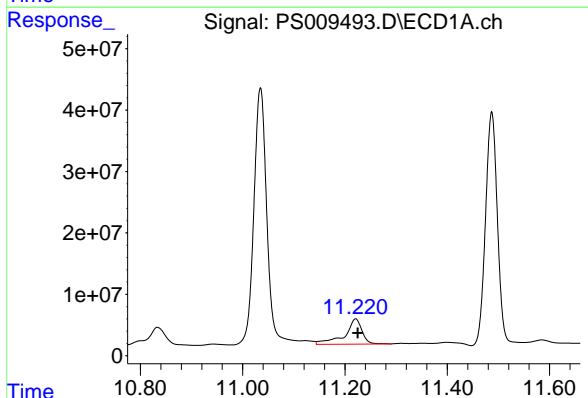
R.T.: 10.056 min
 Delta R.T.: -0.002 min
 Response: 71438838
 Conc: 206.50 ng/ml

Instrument :
 ECD_S
 ClientSampleId :
 FK-BPM-01-C4-D4-C4A-D4AMS



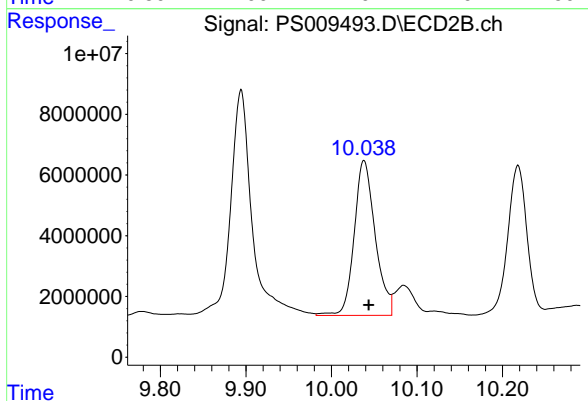
#13 2,4-DB

R.T.: 9.702 min
 Delta R.T.: -0.006 min
 Response: 96868581
 Conc: 255.18 ng/ml



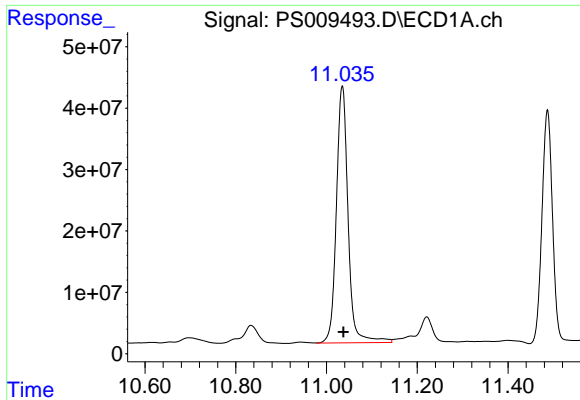
#14 DINOSEB

R.T.: 11.221 min
 Delta R.T.: -0.004 min
 Response: 97118024
 Conc: 47.51 ng/ml



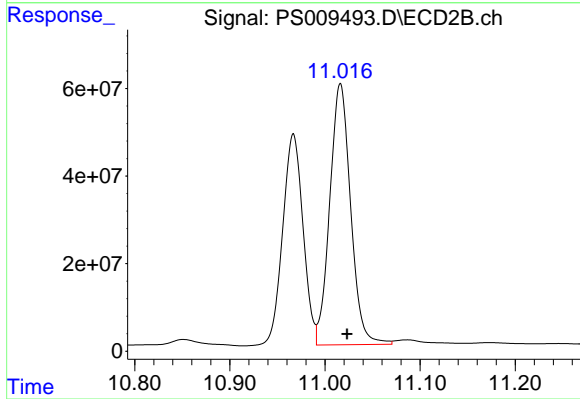
#14 DINOSEB

R.T.: 10.038 min
 Delta R.T.: -0.005 min
 Response: 86916912
 Conc: 39.57 ng/ml

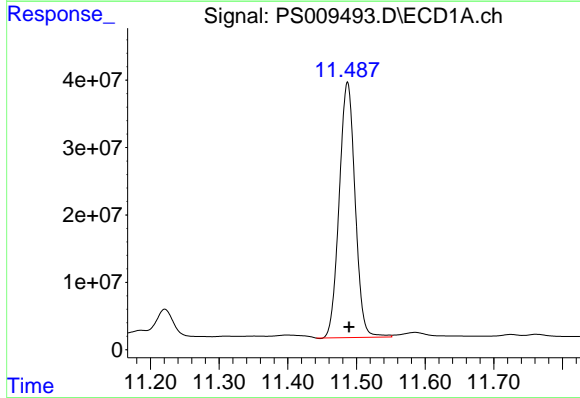


#15 Picloram
 R.T.: 11.035 min
 Delta R.T.: -0.003 min
 Response: 749941156
 Conc: 247.10 ng/ml

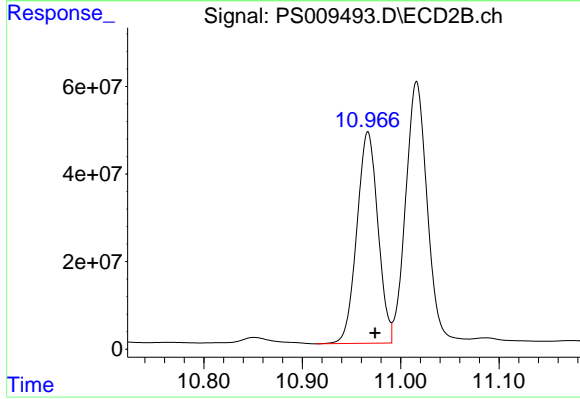
Instrument :
 ECD_S
 ClientSampleId :
 FK-BPM-01-C4-D4-C4A-D4AMS



#15 Picloram
 R.T.: 11.016 min
 Delta R.T.: -0.007 min
 Response: 910166373
 Conc: 223.51 ng/ml



#16 DCPA
 R.T.: 11.487 min
 Delta R.T.: -0.002 min
 Response: 609478543
 Conc: 175.83 ng/ml



#16 DCPA
 R.T.: 10.967 min
 Delta R.T.: -0.007 min
 Response: 717847184
 Conc: 185.34 ng/ml