

Data Path : Z:\pestpcbsrv\HPCHEM1\ECD_S\Data\PS032720\
 Data File : PS009501.D
 Signal(s) : Signal #1: ECD1A.ch Signal #2: ECD2B.ch
 Acq On : 28 Mar 2020 05:27
 Operator : DD\AJ
 Sample : L2052-02
 Misc :
 ALS Vial : 36 Sample Multiplier: 1

Instrument :
 ECD_S
ClientSampled :
 SOIL-PILE

Manual Integrations
APPROVED
 mohammad
 3/31/2020 8:23:57 AM

Integration File signal 1: autoint1.e
 Integration File signal 2: autoint2.e
 Quant Time: Mar 28 06:57:33 2020
 Quant Method : Z:\pestpcbsrv\HPCHEM1\ECD_S\Method\PS031120.M
 Quant Title : 8080.M
 QLast Update : Thu Mar 12 07:13:24 2020
 Response via : Initial Calibration
 Integrator: ChemStation

Volume Inj. : 2 µl
 Signal #1 Phase : Rtx-CLPesticides Signal #2 Phase: Rtx-CLPesticides2
 Signal #1 Info : 30M x 0.32mm x0.5 Signal #2 Info : 30M x 0.32mm x 0.25µm

Compound	RT#1	RT#2	Resp#1	Resp#2	ng/ml	ng/ml

System Monitoring Compounds						
4) S 2,4-DCAA	7.241	6.929	133.7E6	120.6E6	241.766	219.568m

Target Compounds

(f)=RT Delta > 1/2 Window (#)=Amounts differ by > 25% (m)=manual int.

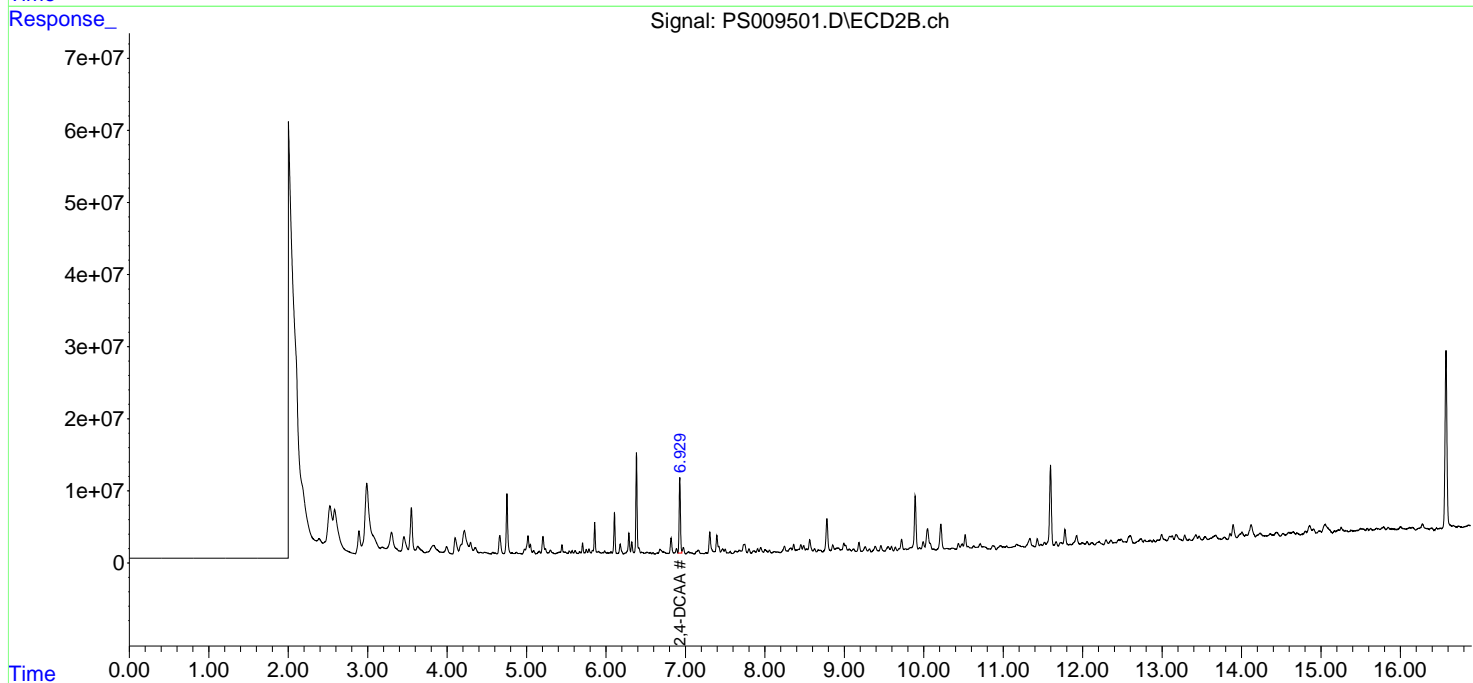
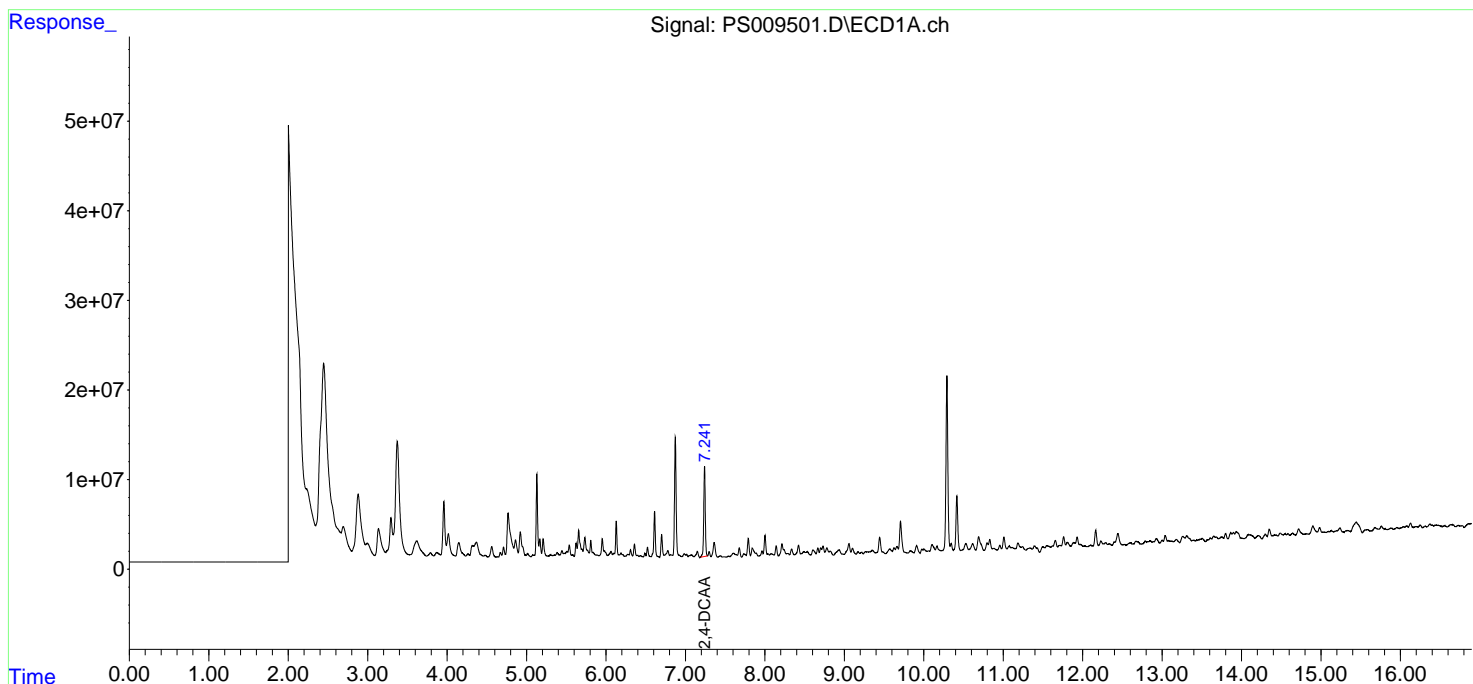
Data Path : Z:\pestpcbsrv\HPCHEM1\ECD_S\Data\PS032720\
 Data File : PS009501.D
 Signal(s) : Signal #1: ECD1A.ch Signal #2: ECD2B.ch
 Acq On : 28 Mar 2020 05:27
 Operator : DD\AJ
 Sample : L2052-02
 Misc :
 ALS Vial : 36 Sample Multiplier: 1

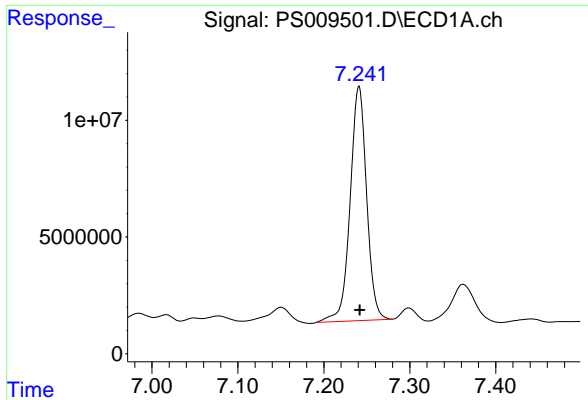
Instrument :
 ECD_S
ClientSampled :
 SOIL-PILE

Manual Integrations
APPROVED
 mohammad
 3/31/2020 8:23:57 AM

Integration File signal 1: autoint1.e
 Integration File signal 2: autoint2.e
 Quant Time: Mar 28 06:57:33 2020
 Quant Method : Z:\pestpcbsrv\HPCHEM1\ECD_S\Method\PS031120.M
 Quant Title : 8080.M
 QLast Update : Thu Mar 12 07:13:24 2020
 Response via : Initial Calibration
 Integrator: ChemStation

Volume Inj. : 2 µl
 Signal #1 Phase : Rtx-CLPesticides Signal #2 Phase: Rtx-CLPesticides2
 Signal #1 Info : 30M x 0.32mm x0.5 Signal #2 Info : 30M x 0.32mm x 0.25µm





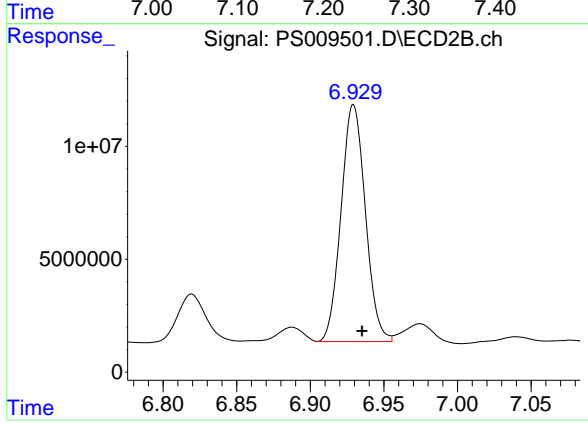
#4 2,4-DCAA

R.T.: 7.241 min
Delta R.T.: -0.001 min
Response: 133737950
Conc: 241.77 ng/ml

Instrument :
ECD_S
ClientSampleId :
SOIL-PILE

Manual Integrations
APPROVED

mohammad
3/31/2020 8:23:57 AM



#4 2,4-DCAA

R.T.: 6.929 min
Delta R.T.: -0.006 min
Response: 120586077
Conc: 219.57 ng/ml m