

Data Path : Z:\pestpcbsrv\HPCHEM1\ECD_S\Data\PS032723\
 Data File : PS022529.D
 Signal(s) : Signal #1: ECD1A.ch Signal #2: ECD2B.ch
 Acq On : 27 Mar 2023 19:08
 Operator : AR\AJ
 Sample : PB151641TB
 Misc :
 ALS Vial : 11 Sample Multiplier: 1

Instrument :
 ECD_S
 ClientSampleId :
 PB151641TB

Integration File signal 1: autoint1.e
 Integration File signal 2: autoint2.e
 Quant Time: Mar 27 21:18:26 2023
 Quant Method : Z:\pestpcbsrv\HPCHEM1\ECD_S\Method\PS032023.M
 Quant Title : 8080.M
 QLast Update : Mon Mar 20 15:46:44 2023
 Response via : Initial Calibration
 Integrator: ChemStation

Volume Inj. : 2 µl
 Signal #1 Phase : Rtx-CLPesticides Signal #2 Phase: Rtx-CLPesticides2
 Signal #1 Info : 30M x 0.32mm x0.5 Signal #2 Info : 30M x 0.32mm x 0.25µm

Compound	RT#1	RT#2	Resp#1	Resp#2	ng/ml	ng/ml

System Monitoring Compounds						
4) S 2,4-DCAA	6.295	6.717	1570.6E6	1385.4E6	642.532	672.604

Target Compounds

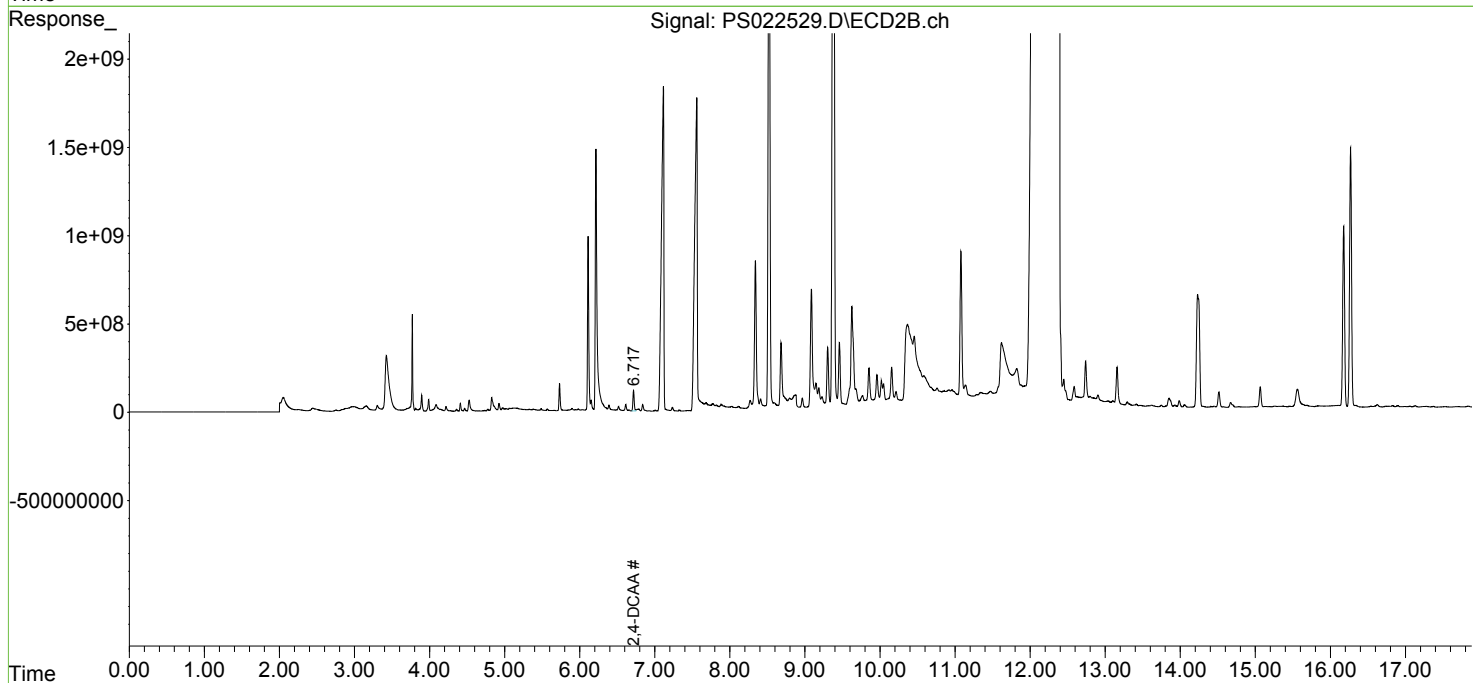
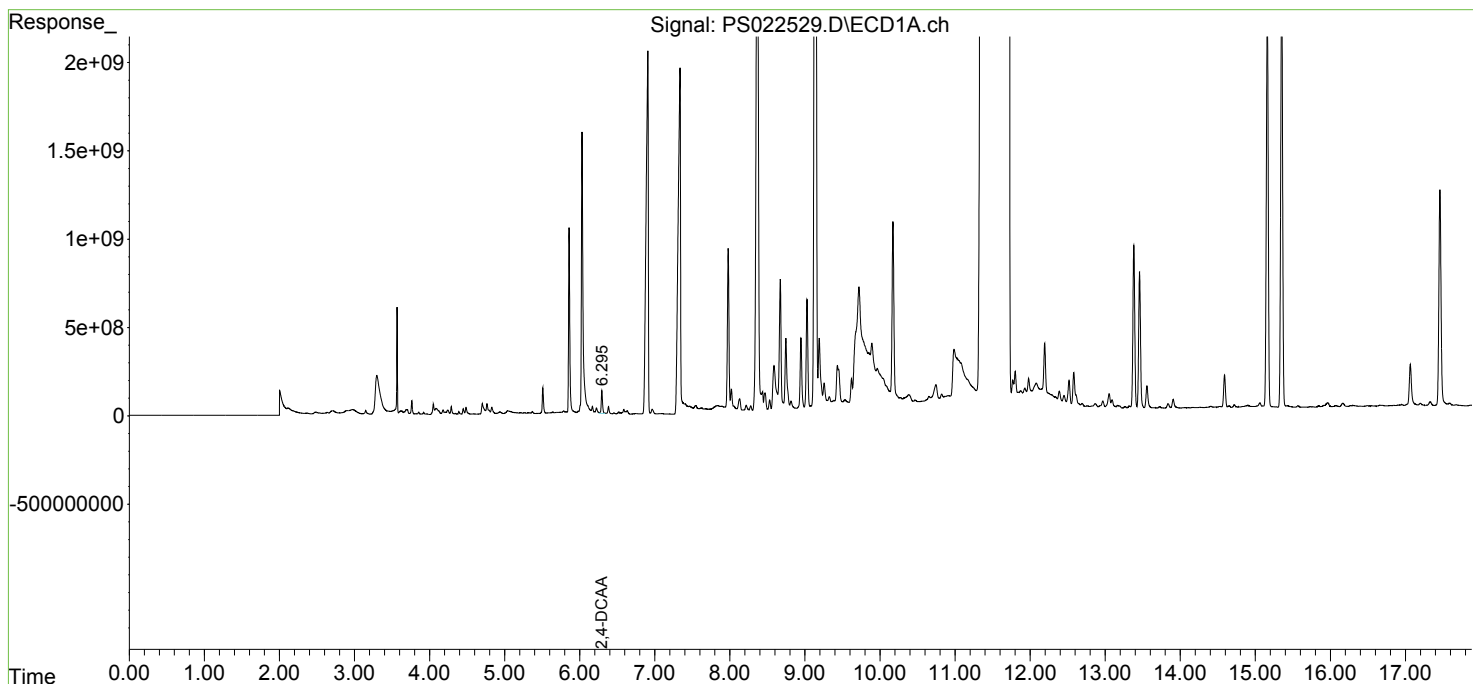
(f)=RT Delta > 1/2 Window (#)=Amounts differ by > 25% (m)=manual int.

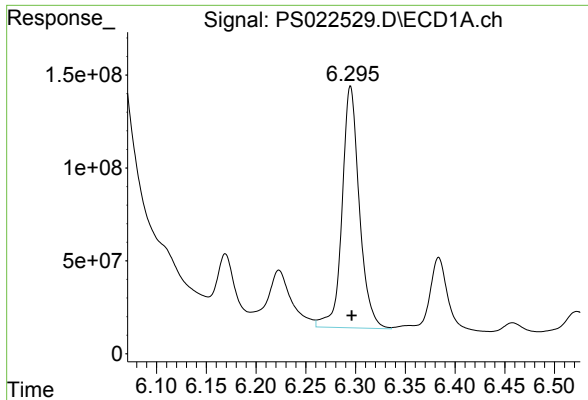
Data Path : Z:\pestpcbsrv\HPCHEM1\ECD_S\Data\PS032723\
Data File : PS022529.D
Signal(s) : Signal #1: ECD1A.ch Signal #2: ECD2B.ch
Acq On : 27 Mar 2023 19:08
Operator : AR\AJ
Sample : PB151641TB
Misc :
ALS Vial : 11 Sample Multiplier: 1

Instrument :
ECD_S
ClientSampleId :
PB151641TB

Integration File signal 1: autoint1.e
Integration File signal 2: autoint2.e
Quant Time: Mar 27 21:18:26 2023
Quant Method : Z:\pestpcbsrv\HPCHEM1\ECD_S\Method\PS032023.M
Quant Title : 8080.M
QLast Update : Mon Mar 20 15:46:44 2023
Response via : Initial Calibration
Integrator: ChemStation

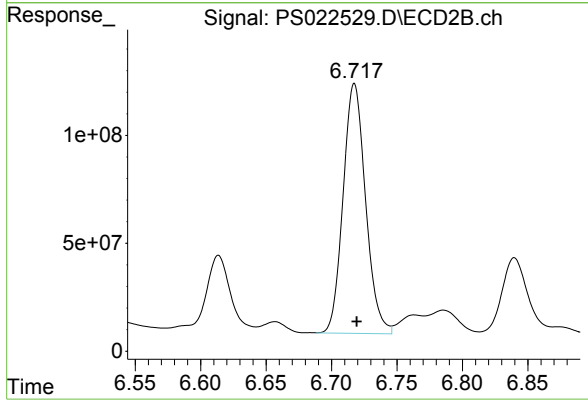
Volume Inj. : 2 µl
Signal #1 Phase : Rtx-CLPesticides Signal #2 Phase: Rtx-CLPesticides2
Signal #1 Info : 30M x 0.32mm x 0.5 Signal #2 Info : 30M x 0.32mm x 0.25µm





#4 2,4-DCAA
R.T.: 6.295 min
Delta R.T.: -0.001 min
Response: 1570592859
Conc: 642.53 ng/ml

Instrument :
ECD_S
ClientSampleId :
PB151641TB



#4 2,4-DCAA
R.T.: 6.717 min
Delta R.T.: -0.002 min
Response: 1385353271
Conc: 672.60 ng/ml