

Data Path : Z:\pestpcbsrv\HPCHEM1\ECD_S\Data\PS032819\
 Data File : PS003808.D
 Signal(s) : Signal #1: ECD1A.ch Signal #2: ECD2B.ch
 Acq On : 28 Mar 2019 12:20
 Operator : EI\SJ
 Sample : PB118327BL
 Misc :
 ALS Vial : 5 Sample Multiplier: 1

Instrument :
 ECD_S
 ClientSampleId :

Integration File signal 1: autoint1.e
 Integration File signal 2: autoint2.e
 Quant Time: Mar 29 04:57:39 2019
 Quant Method : Z:\pestpcbsrv\HPCHEM1\ECD_S\Method\PS032619.M
 Quant Title : 8080.M
 QLast Update : Wed Mar 27 05:52:44 2019
 Response via : Initial Calibration
 Integrator: ChemStation

Volume Inj. : 2 µl
 Signal #1 Phase : Rtx-CLPesticides Signal #2 Phase: Rtx-CLPesticides2
 Signal #1 Info : 30M x 0.32mm x0.5 Signal #2 Info : 30M x 0.32mm x 0.25µm

Compound	RT#1	RT#2	Resp#1	Resp#2	ng/ml	ng/ml

System Monitoring Compounds						
4) S 2,4-DCAA	11.264	10.767	472.2E6	435.9E6	1082.503	888.315
Target Compounds						
1) T Dalapon	2.786	2.283	49545575	136.6E6	66.457	187.266 #
2) T 3,5-DICHL...	0.000	8.935	0	755770	N.D.	1.185 #
3) T 4-Nitroph...	0.000	9.945	0	18154091	N.D.	79.962 #
5) T DICAMBA	0.000	11.009	0	2069288	N.D.	1.113 #
7) T MCPA	12.221	11.621	8531749	10384559	4.044	5.823 #
9) T 2,4-D	0.000	12.627	0	3493542	N.D.	6.568 #
10) T Pentachlo...	0.000	13.177	0	1300791	N.D.	0.188 #
11) T 2,4,5-TP ...	0.000	13.781	0	3805325	N.D.	1.437 #
12) T 2,4,5-T	0.000	14.404	0	18367549	N.D.	8.449 #
13) T 2,4-DB	0.000	14.993	0	5178046	N.D.	17.437 #
14) T DINOSEB	0.000	15.494	0	17623557	N.D.	9.185 #
15) T Picloram	0.000	16.710	0	50009216	N.D.	15.770 #

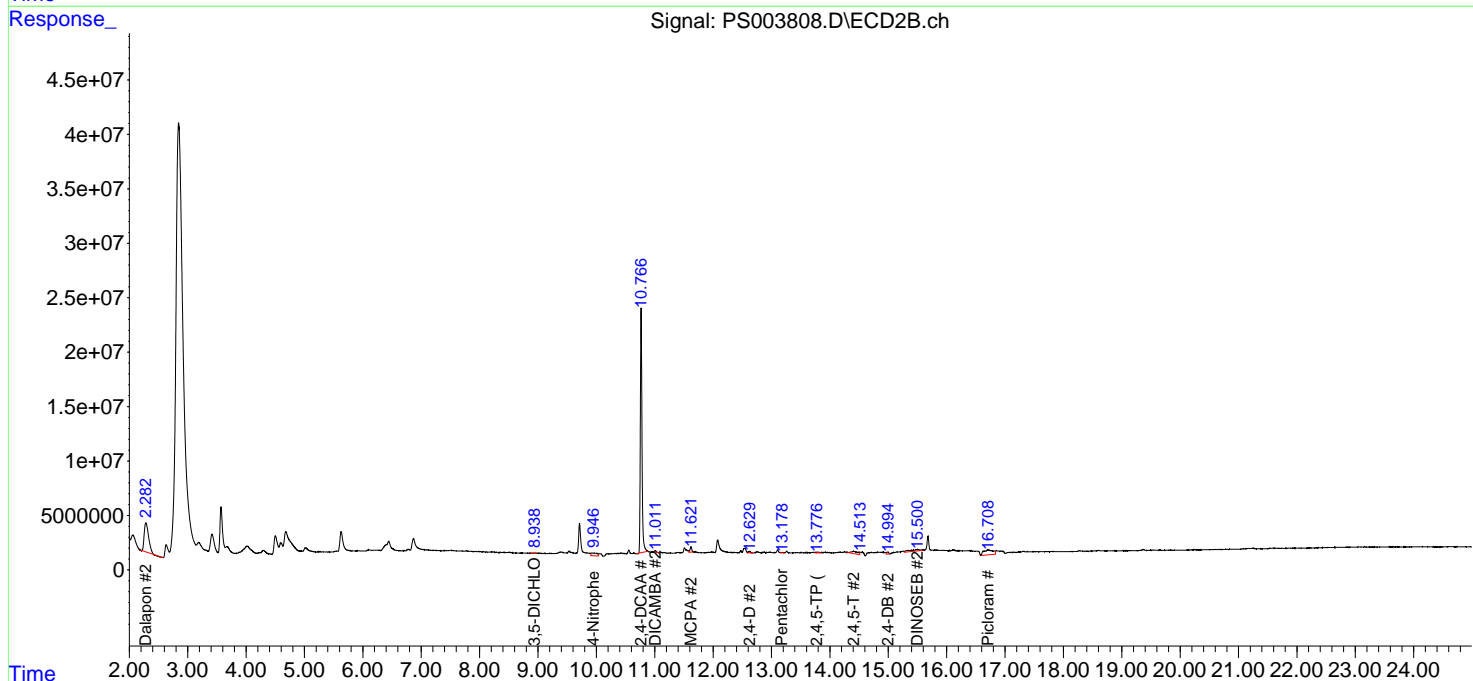
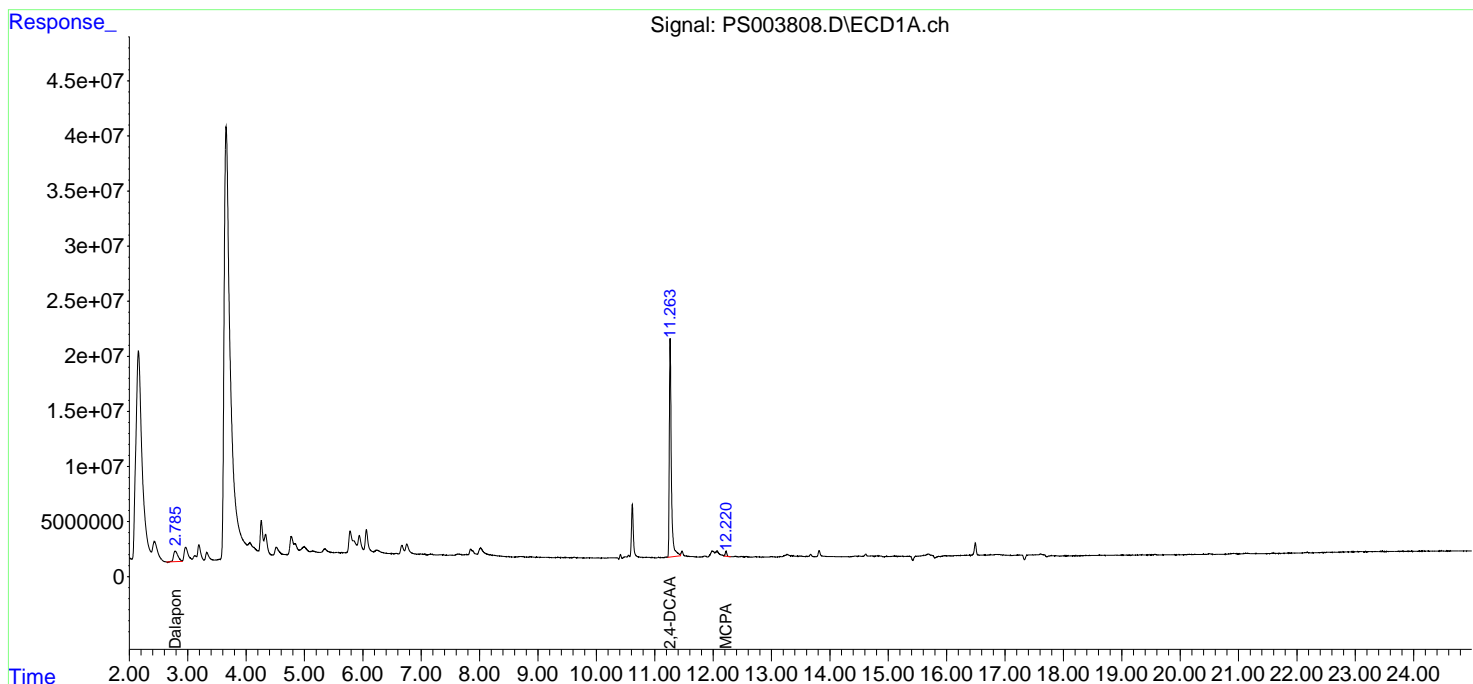
(f)=RT Delta > 1/2 Window (#)=Amounts differ by > 25% (m)=manual int.

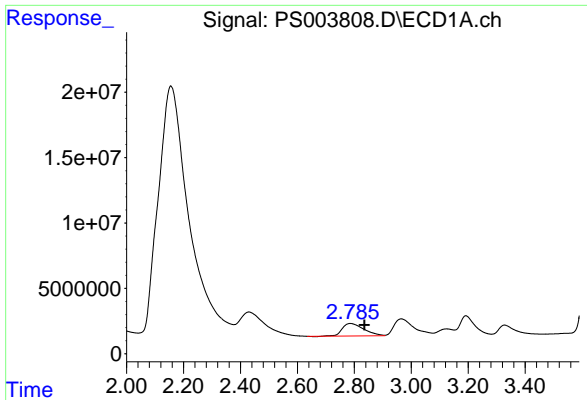
Data Path : Z:\pestpcbsrv\HPCHEM1\ECD_S\Data\PS032819\
 Data File : PS003808.D
 Signal(s) : Signal #1: ECD1A.ch Signal #2: ECD2B.ch
 Acq On : 28 Mar 2019 12:20
 Operator : EI\SJ
 Sample : PB118327BL
 Misc :
 ALS Vial : 5 Sample Multiplier: 1

Instrument :
 ECD_S
 ClientSampled :

Integration File signal 1: autoint1.e
 Integration File signal 2: autoint2.e
 Quant Time: Mar 29 04:57:39 2019
 Quant Method : Z:\pestpcbsrv\HPCHEM1\ECD_S\Method\PS032619.M
 Quant Title : 8080.M
 QLast Update : Wed Mar 27 05:52:44 2019
 Response via : Initial Calibration
 Integrator: ChemStation

Volume Inj. : 2 µl
 Signal #1 Phase : Rtx-CLPesticides Signal #2 Phase: Rtx-CLPesticides2
 Signal #1 Info : 30M x 0.32mm x0.5 Signal #2 Info : 30M x 0.32mm x 0.25µm

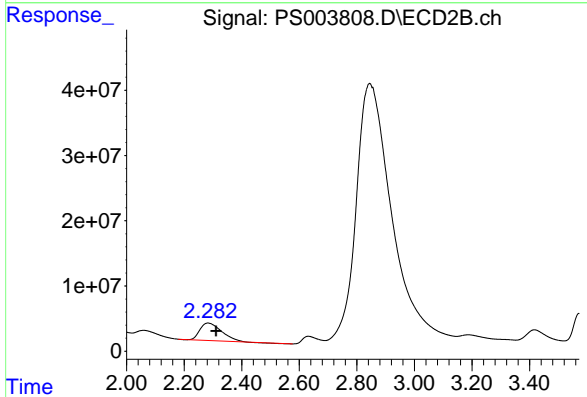




#1 Dalapon

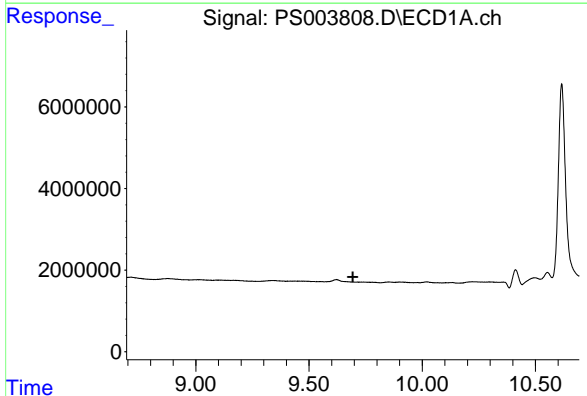
R.T.: 2.786 min
 Delta R.T.: -0.049 min
 Response: 49545575
 Conc: 66.46 ng/ml

Instrument :
 ECD_S
 ClientSampled :



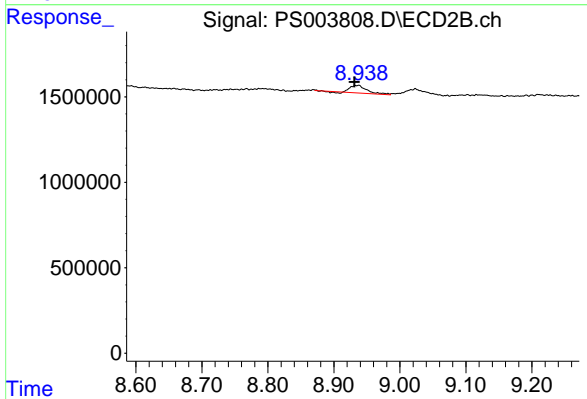
#1 Dalapon

R.T.: 2.283 min
 Delta R.T.: -0.028 min
 Response: 136634396
 Conc: 187.27 ng/ml



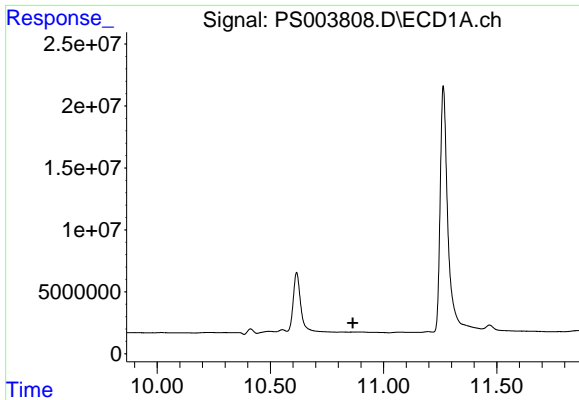
#2 3,5-DICHLOROBENZOIC ACID

R.T.: 0.000 min
 Exp R.T. : 9.693 min
 Response: 0
 Conc: N.D.



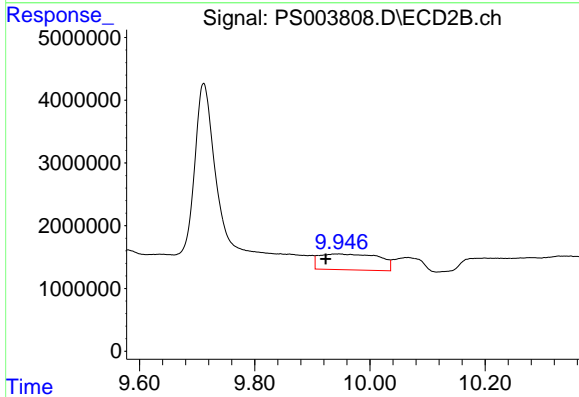
#2 3,5-DICHLOROBENZOIC ACID

R.T.: 8.935 min
 Delta R.T.: 0.005 min
 Response: 755770
 Conc: 1.18 ng/ml

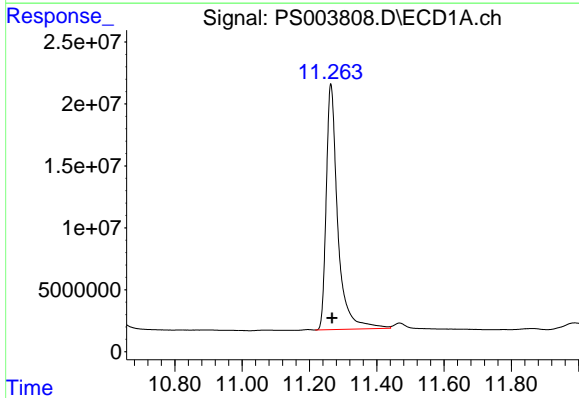


#3 4-Nitrophenol
 R.T.: 0.000 min
 Exp R.T.: 10.865 min
 Response: 0
 Conc: N.D.

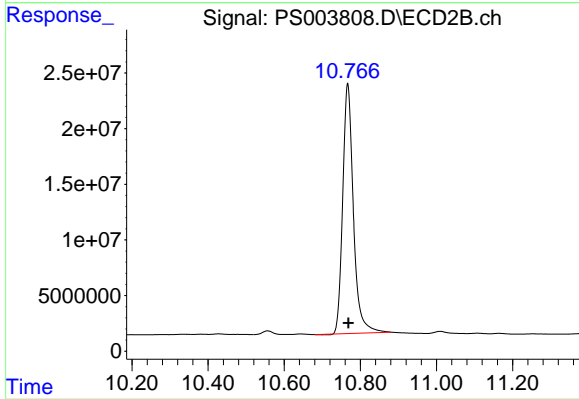
Instrument :
 ECD_S
 ClientSampled :



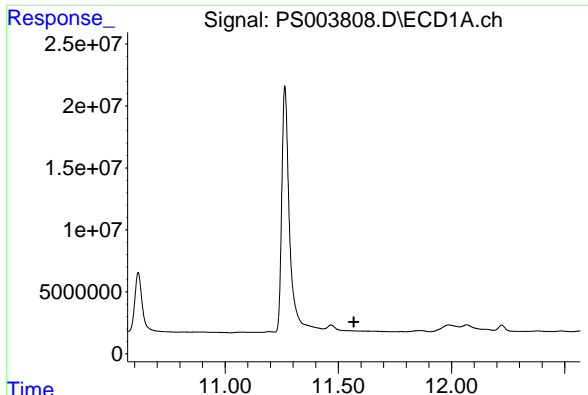
#3 4-Nitrophenol
 R.T.: 9.945 min
 Delta R.T.: 0.022 min
 Response: 18154091
 Conc: 79.96 ng/ml



#4 2,4-DCAA
 R.T.: 11.264 min
 Delta R.T.: -0.003 min
 Response: 472201372
 Conc: 1082.50 ng/ml

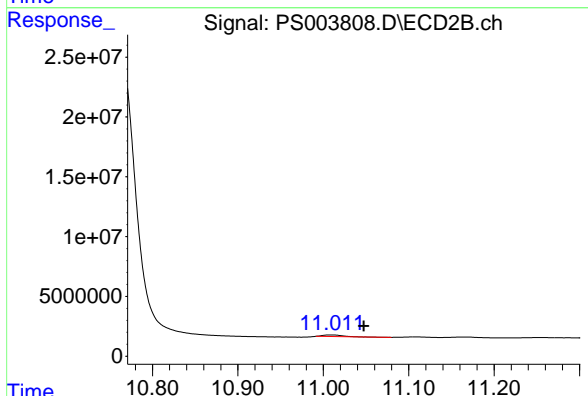


#4 2,4-DCAA
 R.T.: 10.767 min
 Delta R.T.: -0.002 min
 Response: 435859347
 Conc: 888.32 ng/ml

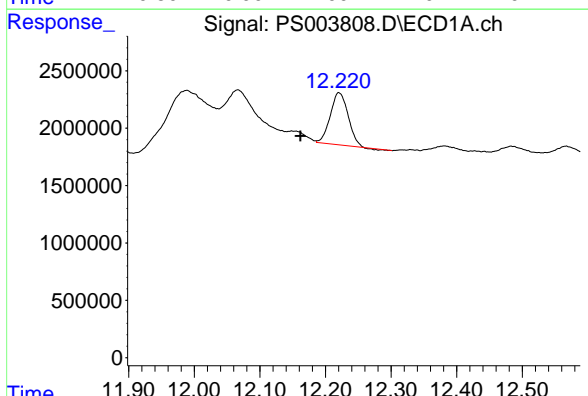


#5 DICAMBA
 R.T.: 0.000 min
 Exp R.T.: 11.569 min
 Response: 0
 Conc: N.D.

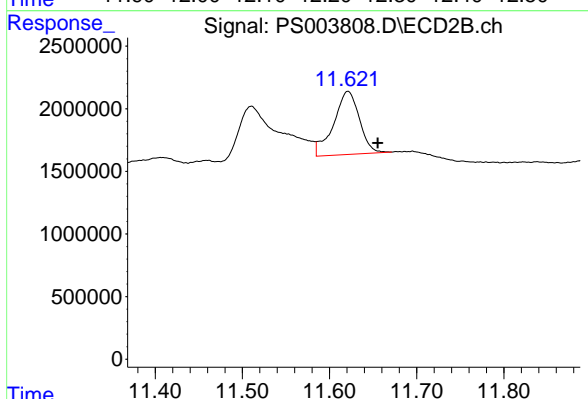
Instrument :
 ECD_S
 ClientSampleId :



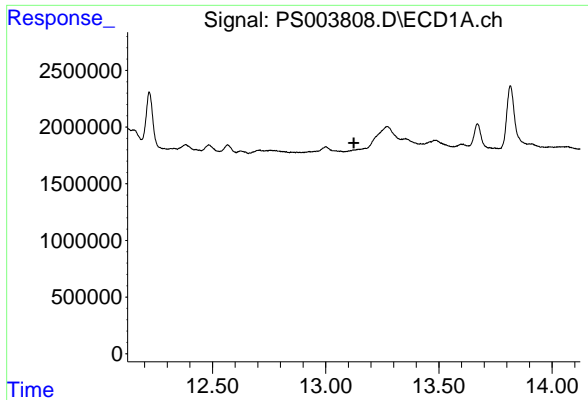
#5 DICAMBA
 R.T.: 11.009 min
 Delta R.T.: -0.039 min
 Response: 2069288
 Conc: 1.11 ng/ml



#7 MCPA
 R.T.: 12.221 min
 Delta R.T.: 0.059 min
 Response: 8531749
 Conc: 4.04 ug/ml

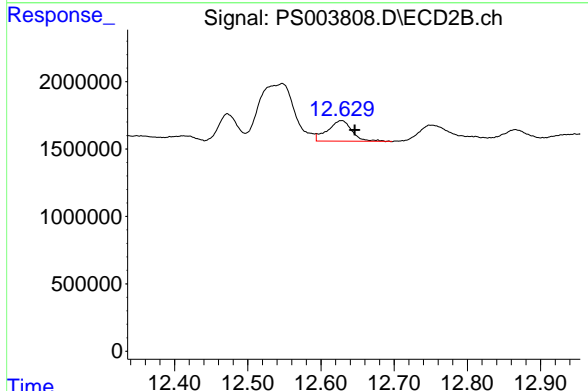


#7 MCPA
 R.T.: 11.621 min
 Delta R.T.: -0.034 min
 Response: 10384559
 Conc: 5.82 ug/ml

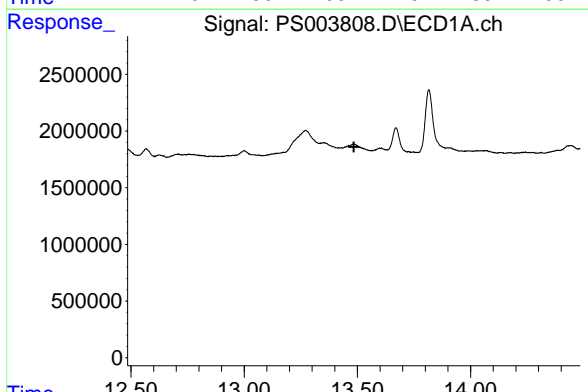


#9 2,4-D
 R.T.: 0.000 min
 Exp R.T. : 13.125 min
 Response: 0
 Conc: N.D.

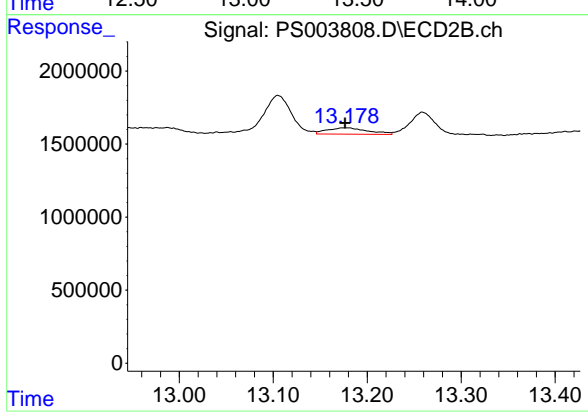
Instrument :
 ECD_S
 ClientSampled :



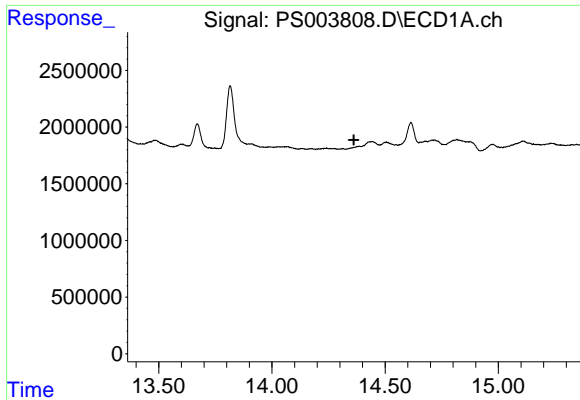
#9 2,4-D
 R.T.: 12.627 min
 Delta R.T.: -0.019 min
 Response: 3493542
 Conc: 6.57 ng/ml



#10 Pentachlorophenol
 R.T.: 0.000 min
 Exp R.T. : 13.485 min
 Response: 0
 Conc: N.D.

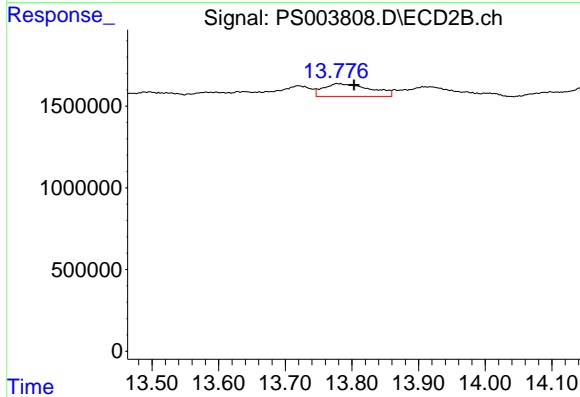


#10 Pentachlorophenol
 R.T.: 13.177 min
 Delta R.T.: 0.000 min
 Response: 1300791
 Conc: 0.19 ng/ml

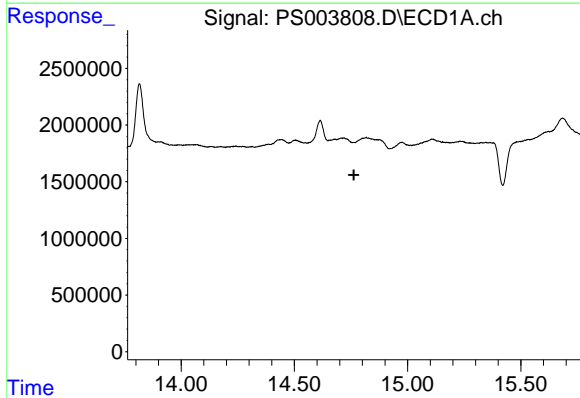


#11 2,4,5-TP (SILVEX)
 R.T.: 0.000 min
 Exp R.T. : 14.362 min
 Response: 0
 Conc: N.D.

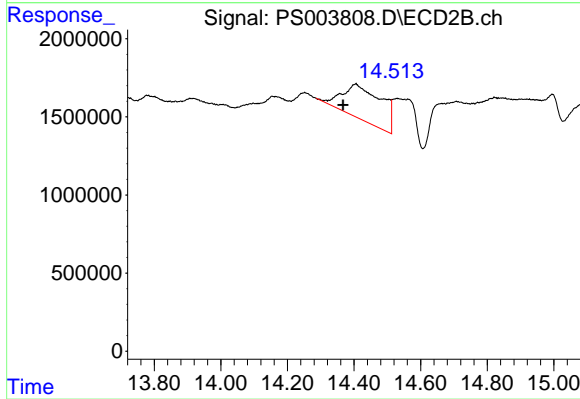
Instrument :
 ECD_S
 ClientSampleId :



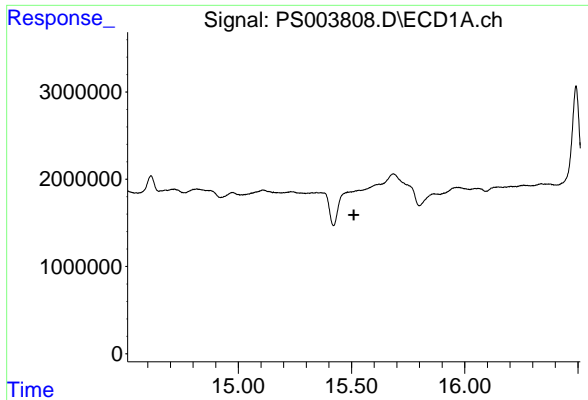
#11 2,4,5-TP (SILVEX)
 R.T.: 13.781 min
 Delta R.T.: -0.023 min
 Response: 3805325
 Conc: 1.44 ng/ml



#12 2,4,5-T
 R.T.: 0.000 min
 Exp R.T. : 14.763 min
 Response: 0
 Conc: N.D.



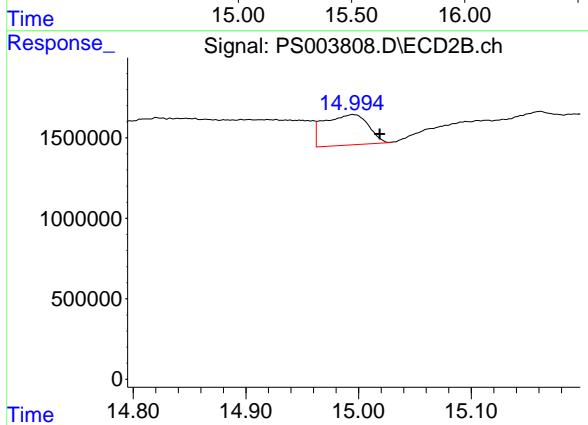
#12 2,4,5-T
 R.T.: 14.404 min
 Delta R.T.: 0.037 min
 Response: 18367549
 Conc: 8.45 ng/ml



#13 2,4-DB

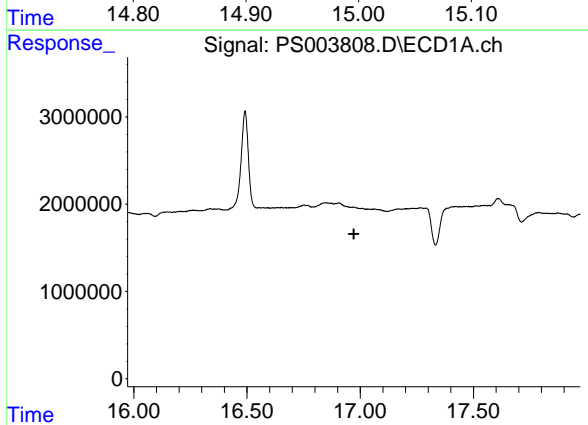
R.T.: 0.000 min
Exp R.T. : 15.510 min
Response: 0
Conc: N.D.

Instrument :
ECD_S
ClientSampled :



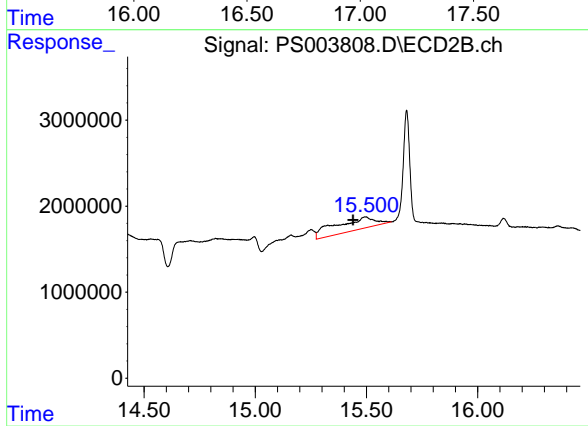
#13 2,4-DB

R.T.: 14.993 min
Delta R.T.: -0.026 min
Response: 5178046
Conc: 17.44 ng/ml



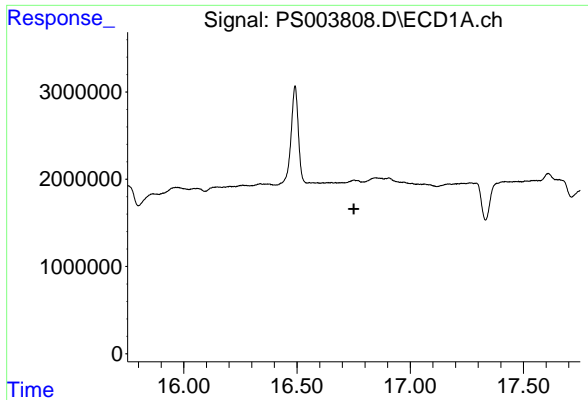
#14 DINOSEB

R.T.: 0.000 min
Exp R.T. : 16.972 min
Response: 0
Conc: N.D.



#14 DINOSEB

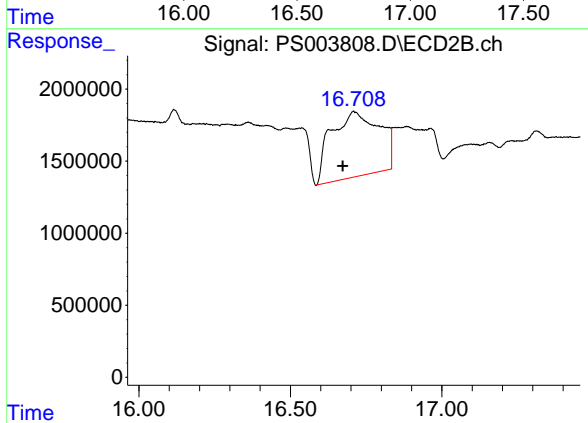
R.T.: 15.494 min
Delta R.T.: 0.054 min
Response: 17623557
Conc: 9.19 ng/ml



#15 Picloram

R.T.: 0.000 min
 Exp R.T. : 16.752 min
 Response: 0
 Conc: N.D.

Instrument :
 ECD_S
 ClientSampleId :



#15 Picloram

R.T.: 16.710 min
 Delta R.T.: 0.037 min
 Response: 50009216
 Conc: 15.77 ng/ml