

Data Path : Z:\pestpcbsrv\HPCHEM1\ECD_S\Data\PS032825\
 Data File : PS029556.D
 Signal(s) : Signal #1: ECD1A.ch Signal #2: ECD2B.ch
 Acq On : 27 Mar 2025 09:25
 Operator : AR\AJ
 Sample : HEXANE
 Misc :
 ALS Vial : 1 Sample Multiplier: 1

Instrument :
 ECD_S
 ClientSampleId :

Integration File signal 1: autoint1.e
 Integration File signal 2: autoint2.e
 Quant Time: Mar 27 13:36:07 2025
 Quant Method : Z:\pestpcbsrv\HPCHEM1\ECD_S\Method\PS032825.M
 Quant Title : 8080.M
 QLast Update : Thu Mar 27 12:24:58 2025
 Response via : Initial Calibration
 Integrator: ChemStation

Volume Inj. : 1 µl
 Signal #1 Phase : ZB-MR2 Signal #2 Phase: ZB-MR2
 Signal #1 Info : 30M x 0.32mm x0.5 Signal #2 Info : 30M x 0.32mm x 0.25µm

Compound	RT#1	RT#2	Resp#1	Resp#2	ng/ml	ng/ml

System Monitoring Compounds						
4) S 2,4-DCAA	7.109	0.000	144025	0	<MDL	N.D. #
Target Compounds						
1) T Dalapon	0.000	2.611	0	4556761	N.D.	2.197
2) T 3,5-DICHL...	6.290	0.000	3698228	0	<MDL	N.D. #
3) T 4-Nitroph...	6.904	0.000	3670579	0	3.450	N.D. #
5) T DICAMBA	7.303	7.746	694119	3819402	<MDL	<MDL #
6) T MCPP	7.496	7.816	-302925	4320696	N.D.	2.087
7) T MCPA	7.626	8.052	98281	11336088	<MDL	3.944 #
8) T DICHLORPROP	7.995	8.463f	342689	16392905	<MDL	13.161 #
9) T 2,4-D	8.205	0.000	1420725	0	<MDL	N.D. #
10) T Pentachlo...	8.515	0.000	5855740	0	<MDL	N.D. #
11) T 2,4,5-TP ...	9.050f	0.000	6623178	0	<MDL	N.D. #
12) T 2,4,5-T	9.400f	10.081f	1312144	7462165	<MDL	<MDL #
13) T 2,4-DB	0.000	10.629f	0	84889381	N.D.	92.376
14) T DINOSEB	11.121	0.000	2857489	0	<MDL	N.D. #
15) T Picloram	10.940	12.054	16531111	26325529	1.149	2.110 #
16) T DCPA	11.426	0.000	8887986	0	<MDL	N.D. #

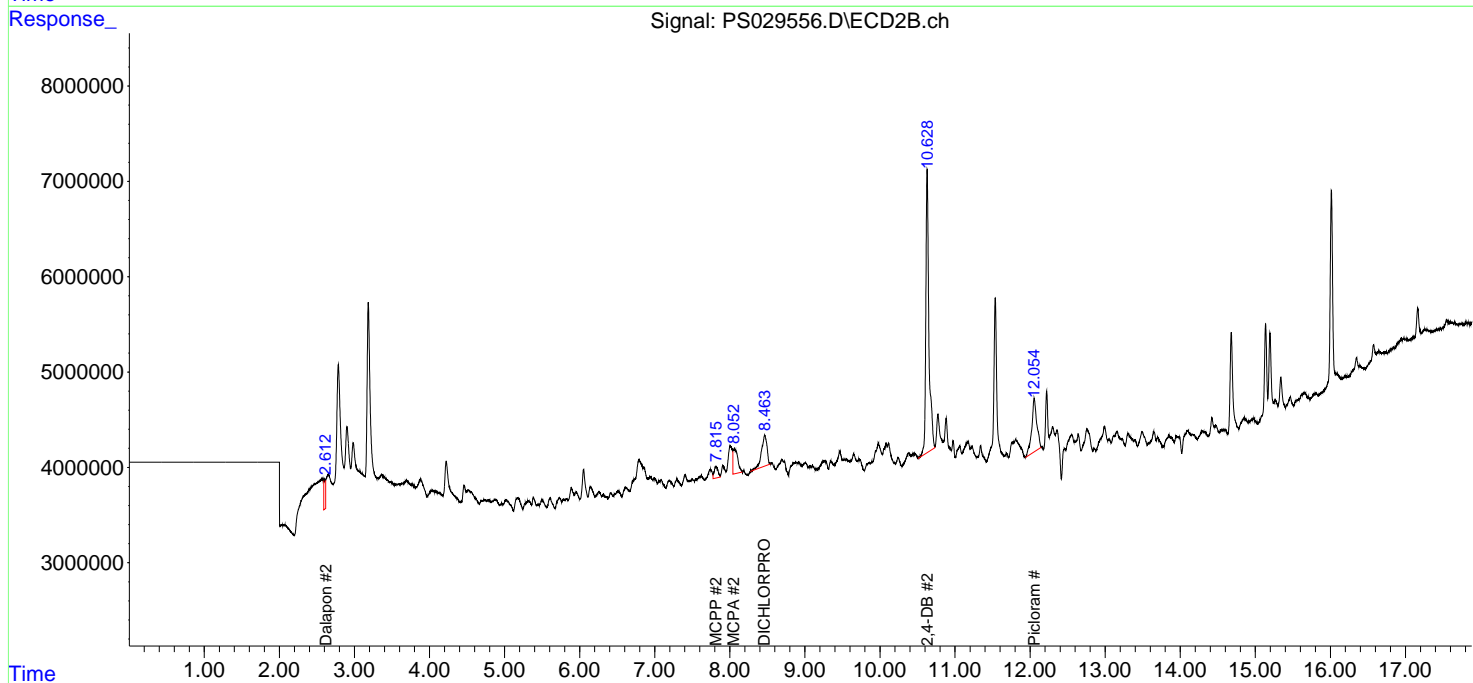
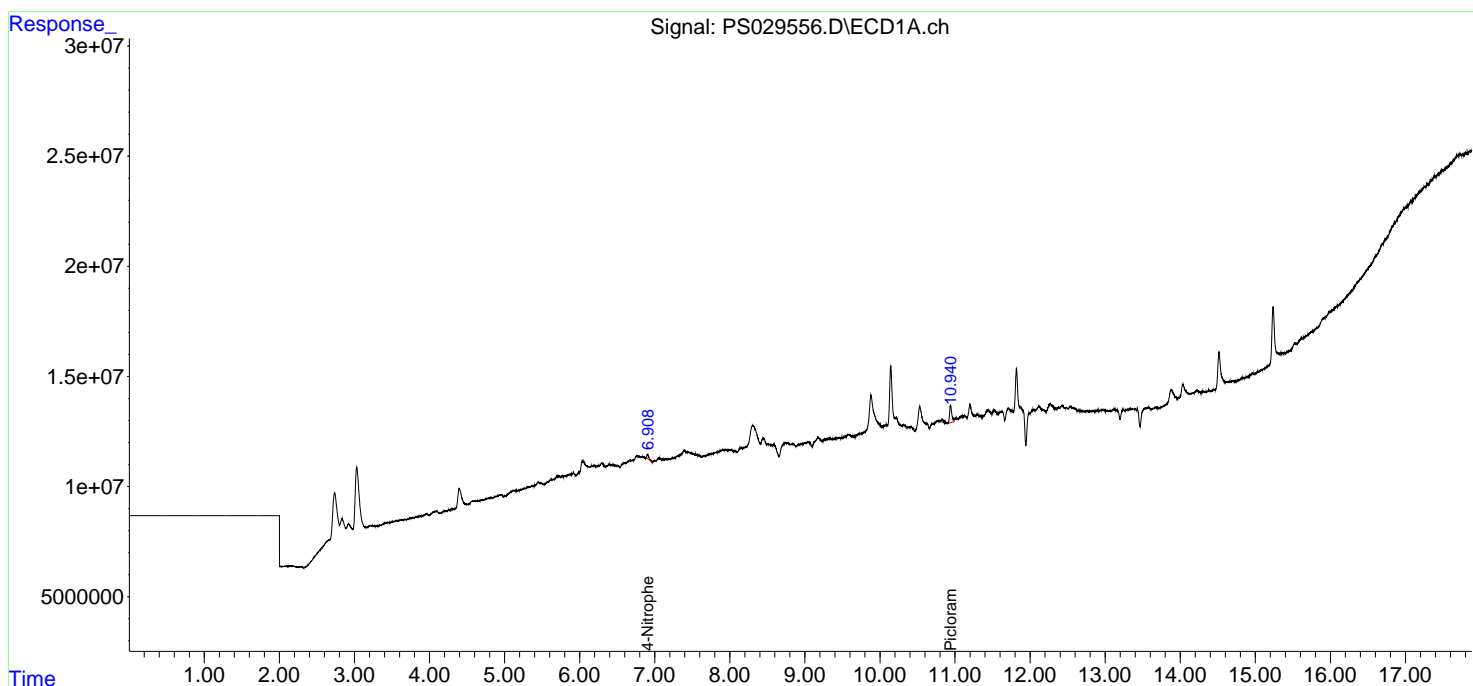
(f)=RT Delta > 1/2 Window (#)=Amounts differ by > 25% (m)=manual int.

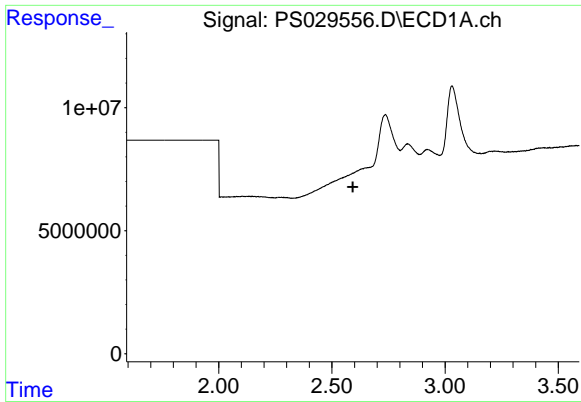
Data Path : Z:\pestpcbsrv\HPCHEM1\ECD_S\Data\PS032825\
Data File : PS029556.D
Signal(s) : Signal #1: ECD1A.ch Signal #2: ECD2B.ch
Acq On : 27 Mar 2025 09:25
Operator : AR\AJ
Sample : HEXANE
Misc :
ALS Vial : 1 Sample Multiplier: 1

Instrument :
ECD_S
ClientSampleId :

Integration File signal 1: autoint1.e
Integration File signal 2: autoint2.e
Quant Time: Mar 27 13:36:07 2025
Quant Method : Z:\pestpcbsrv\HPCHEM1\ECD_S\Method\PS032825.M
Quant Title : 8080.M
QLast Update : Thu Mar 27 12:24:58 2025
Response via : Initial Calibration
Integrator: ChemStation

Volume Inj. : 1 µl
Signal #1 Phase : ZB-MR1 Signal #2 Phase: ZB-MR2
Signal #1 Info : 30M x 0.32mm x 0.5 Signal #2 Info : 30M x 0.32mm x 0.25µm



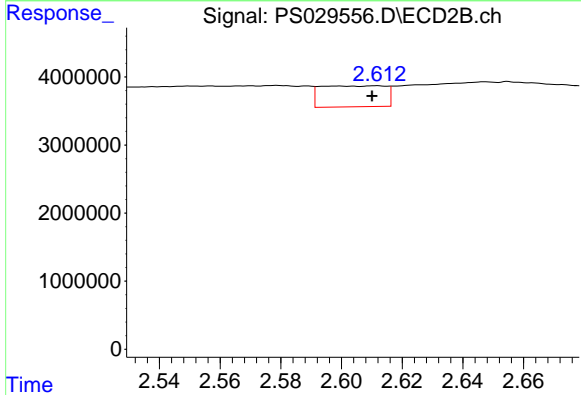


#1 Dalapon

R.T.: 0.000 min
 Exp R.T.: 2.593 min
 Response: 0
 Conc: N.D.

Instrument :
 ECD_S
 ClientSampleId :

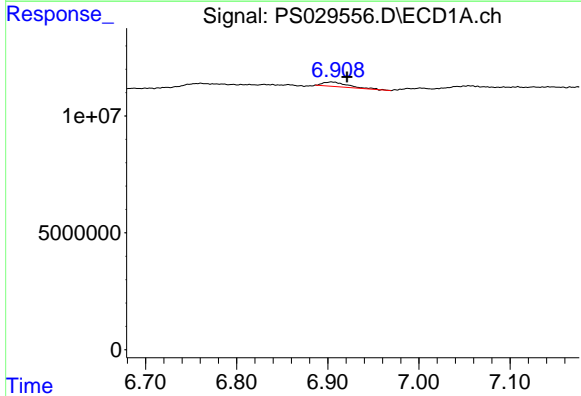
Time



#1 Dalapon

R.T.: 2.611 min
 Delta R.T.: 0.001 min
 Response: 4556761
 Conc: 2.20 ng/ml

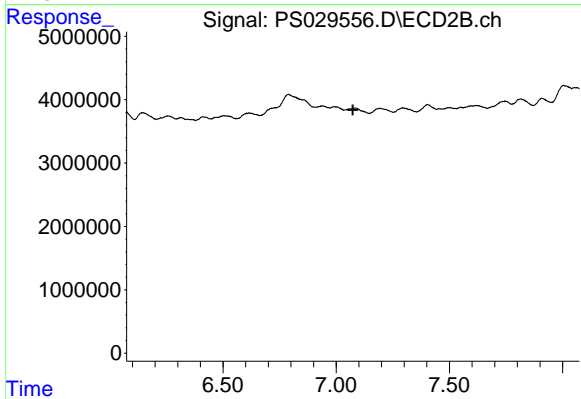
Time



#3 4-Nitrophenol

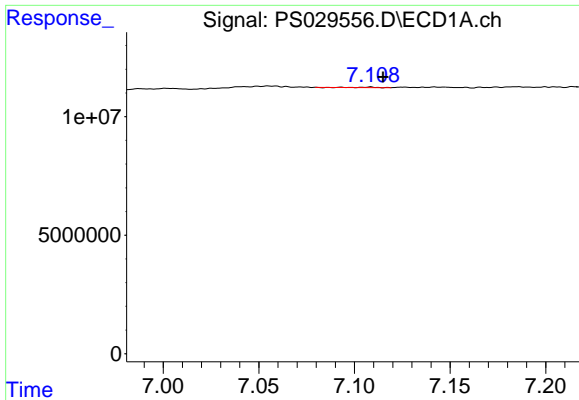
R.T.: 6.904 min
 Delta R.T.: -0.017 min
 Response: 3670579
 Conc: 3.45 ng/ml

Time



#3 4-Nitrophenol

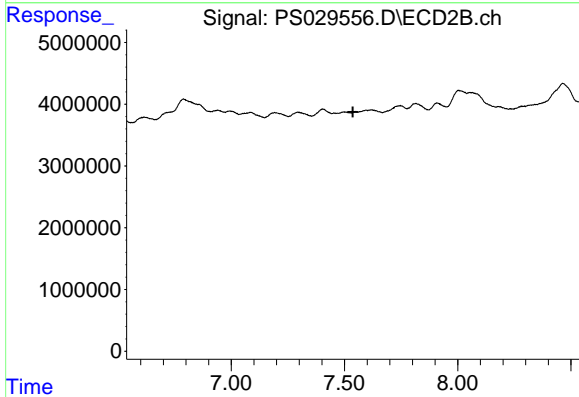
R.T.: 0.000 min
 Exp R.T.: 7.073 min
 Response: 0
 Conc: N.D.



#4 2,4-DCAA

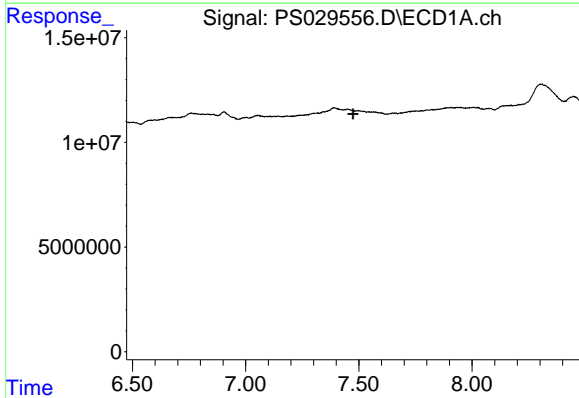
R.T.: 7.109 min
 Delta R.T.: -0.006 min
 Response: 144025
 Conc: N.D.

Instrument :
 ECD_S
 ClientSampleId :



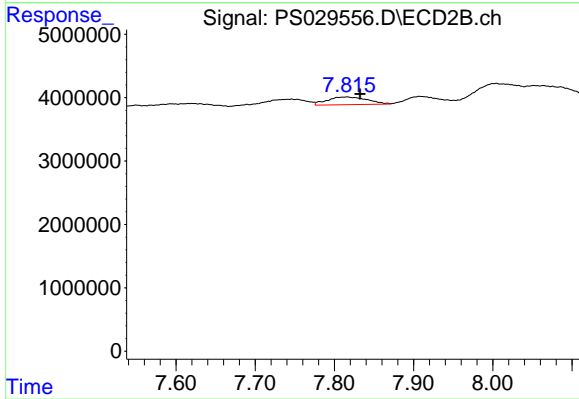
#4 2,4-DCAA

R.T.: 0.000 min
 Exp R.T. : 7.537 min
 Response: 0
 Conc: N.D.



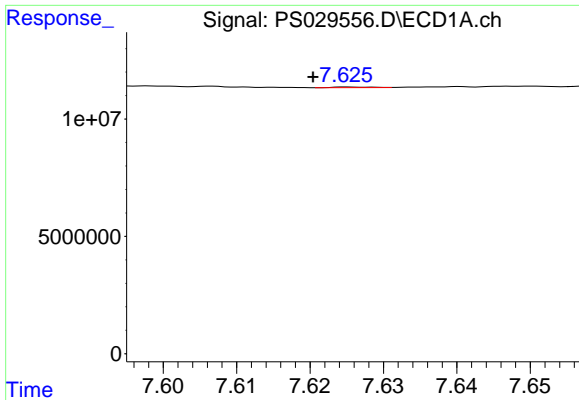
#6 MCP

R.T.: 7.496 min
 Delta R.T.: 0.022 min
 Response: -302925
 Conc: N.D.



#6 MCP

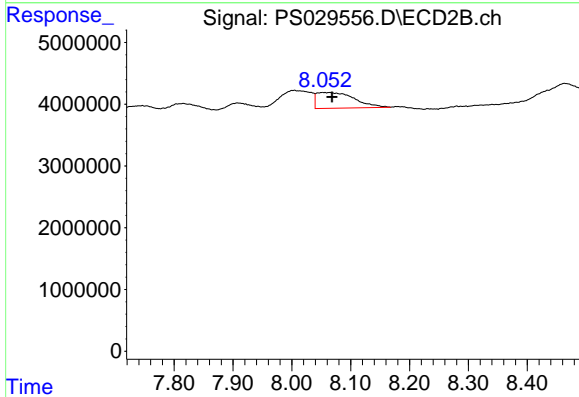
R.T.: 7.816 min
 Delta R.T.: -0.016 min
 Response: 4320696
 Conc: 2.09 ug/ml



#7 MCPA

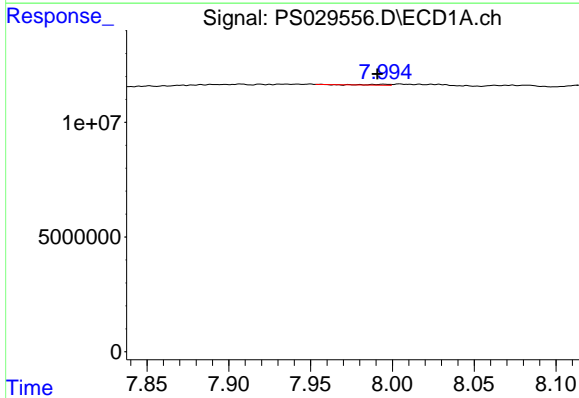
R.T.: 7.626 min
 Delta R.T.: 0.006 min
 Response: 98281
 Conc: N.D.

Instrument :
 ECD_S
 ClientSampleId :



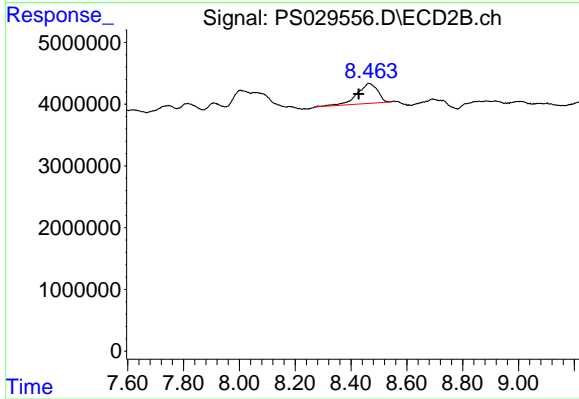
#7 MCPA

R.T.: 8.052 min
 Delta R.T.: -0.016 min
 Response: 11336088
 Conc: 3.94 ug/ml



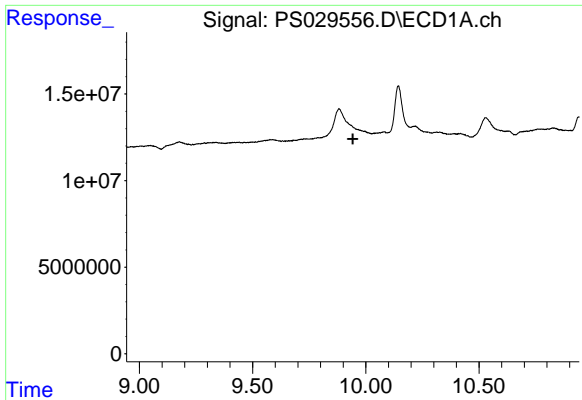
#8 DICHLORPROP

R.T.: 7.995 min
 Delta R.T.: 0.004 min
 Response: 342689
 Conc: N.D.



#8 DICHLORPROP

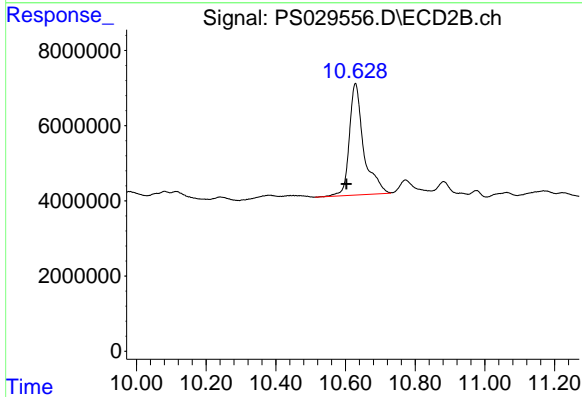
R.T.: 8.463 min
 Delta R.T.: 0.035 min
 Response: 16392905
 Conc: 13.16 ng/ml



#13 2,4-DB

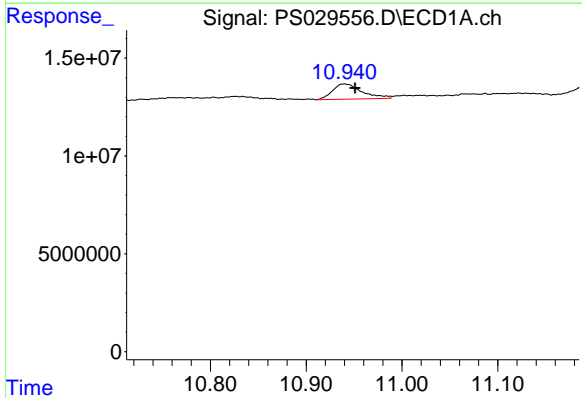
R.T.: 0.000 min
 Exp R.T.: 9.943 min
 Response: 0
 Conc: N.D.

Instrument :
 ECD_S
 ClientSampleId :



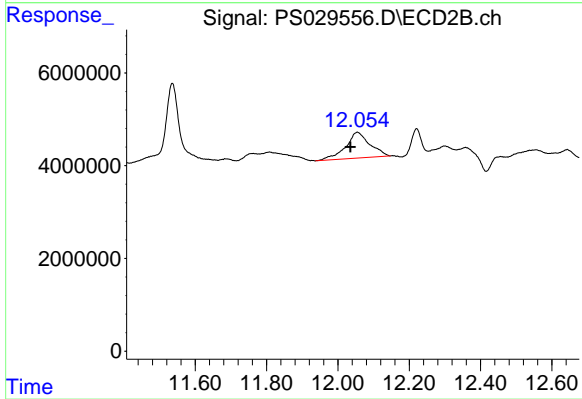
#13 2,4-DB

R.T.: 10.629 min
 Delta R.T.: 0.026 min
 Response: 84889381
 Conc: 92.38 ng/ml



#15 Picloram

R.T.: 10.940 min
 Delta R.T.: -0.011 min
 Response: 16531111
 Conc: 1.15 ng/ml



#15 Picloram

R.T.: 12.054 min
 Delta R.T.: 0.019 min
 Response: 26325529
 Conc: 2.11 ng/ml