

Data Path : Z:\pestpcbsrv\HPCHEM1\ECD_S\Data\PS032825\
 Data File : PS029573.D
 Signal(s) : Signal #1: ECD1A.ch Signal #2: ECD2B.ch
 Acq On : 27 Mar 2025 16:26
 Operator : AR\AJ
 Sample : Q1636-13
 Misc :
 ALS Vial : 16 Sample Multiplier: 1

Instrument :
 ECD_S
 ClientSampleId :

Integration File signal 1: autoint1.e
 Integration File signal 2: autoint2.e
 Quant Time: Mar 27 16:58:21 2025
 Quant Method : Z:\pestpcbsrv\HPCHEM1\ECD_S\Method\PS032825.M
 Quant Title : 8080.M
 QLast Update : Thu Mar 27 12:24:58 2025
 Response via : Initial Calibration
 Integrator: ChemStation

Volume Inj. : 1 µl
 Signal #1 Phase : ZB-MR2 Signal #2 Phase: ZB-MR2
 Signal #1 Info : 30M x 0.32mm x0.5 Signal #2 Info : 30M x 0.32mm x 0.25µm

	Compound	RT#1	RT#2	Resp#1	Resp#2	ng/ml	ng/ml

System Monitoring Compounds							
4) S	2,4-DCAA	7.113	7.535	1418.7E6	332.5E6	369.451	385.153
Target Compounds							
1) T	Dalapon	2.575	2.651f	489.2E6	125.0E6	82.517	60.263 #
2) T	3,5-DICHL...	6.287	6.546	38710124	-3536972	6.772	N.D. #
3) T	4-Nitroph...	0.000	7.105f	0	27881000	N.D.	34.513
5) T	DICAMBA	7.310	7.758f	58528430	8738870	3.692	1.828 #
6) T	MCP P	7.481	7.802f	22907334	11856951	2.012	5.727 #
7) T	MCPA	7.648f	8.063	223.3E6	71788315	15.530	24.978 #
8) T	DICHLORPROP	7.988	8.462f	58727767	20974107	13.372	16.839 #
9) T	2,4-D	8.192f	8.777f	4158.8E6	12893343	1030.997	9.439 #
10) T	Pentachlo...	8.503	9.249	31462965	29376861	<MDL	1.324 #
11) T	2,4,5-TP ...	9.113f	9.592f	34104202	82854167	1.464	9.389 #
12) T	2,4,5-T	9.366	10.016f	24978802	92061715	1.213	11.550 #
13) T	2,4-DB	0.000	10.622	0	28994270	N.D.	31.551
14) T	DINOSEB	11.132	10.966	147.1E6	47160746	8.295	7.956
15) T	Picloram	10.976	12.042	94702565	38067527	6.580	3.051 #
16) T	DCPA	0.000	11.998	0	36667550	N.D.	3.270

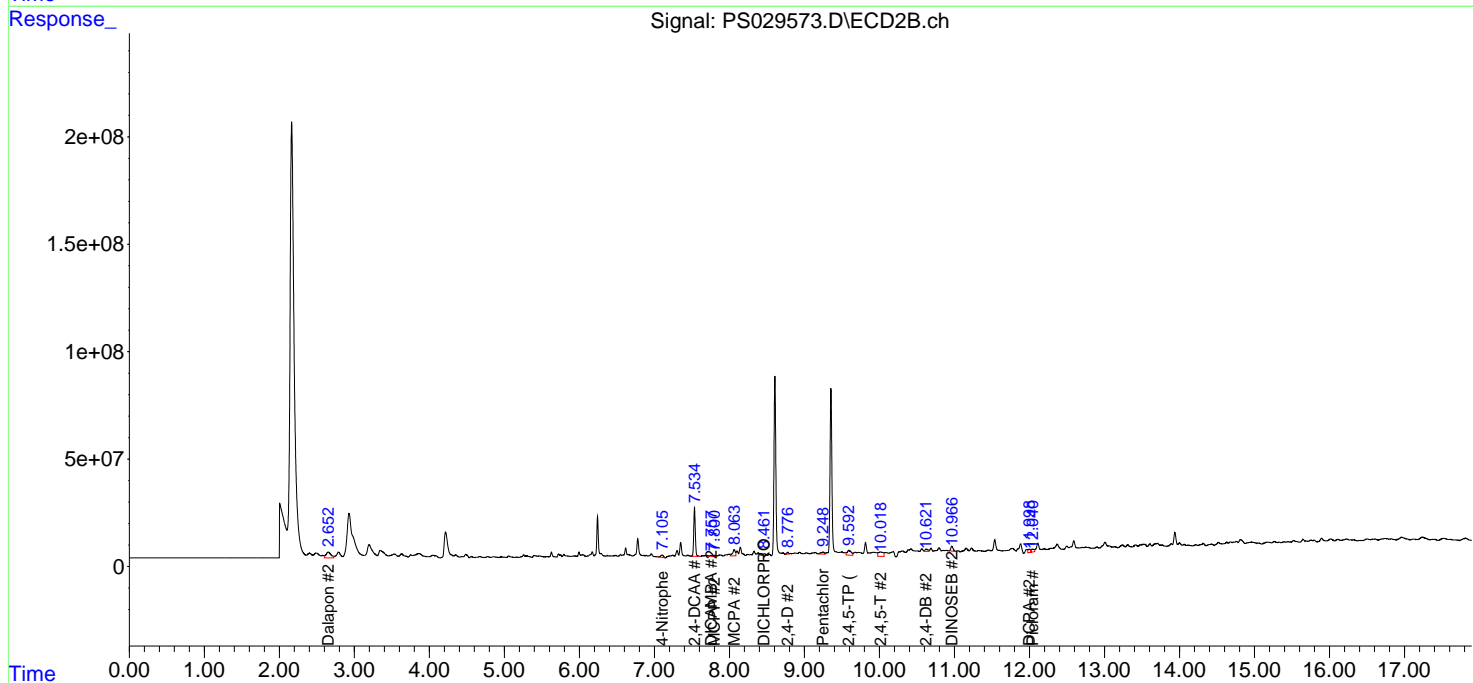
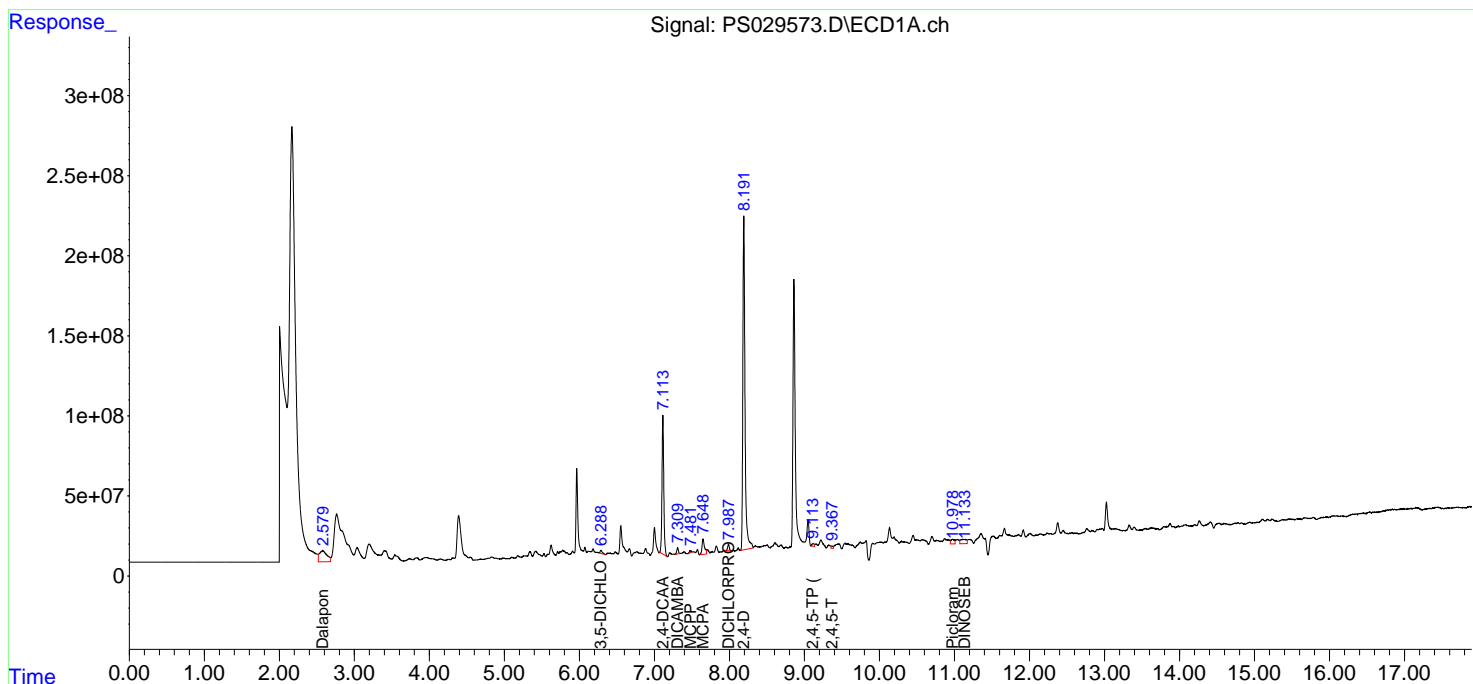
(f)=RT Delta > 1/2 Window (#)=Amounts differ by > 25% (m)=manual int.

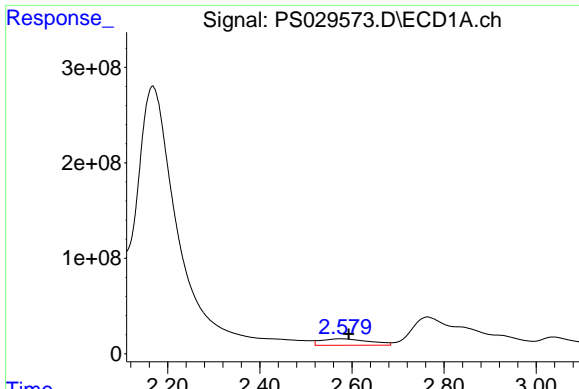
Data Path : Z:\pestpcbsrv\HPCHEM1\ECD_S\Data\PS032825\
 Data File : PS029573.D
 Signal(s) : Signal #1: ECD1A.ch Signal #2: ECD2B.ch
 Acq On : 27 Mar 2025 16:26
 Operator : AR\AJ
 Sample : Q1636-13
 Misc :
 ALS Vial : 16 Sample Multiplier: 1

Instrument :
 ECD_S
 ClientSampleId :

Integration File signal 1: autoint1.e
 Integration File signal 2: autoint2.e
 Quant Time: Mar 27 16:58:21 2025
 Quant Method : Z:\pestpcbsrv\HPCHEM1\ECD_S\Method\PS032825.M
 Quant Title : 8080.M
 QLast Update : Thu Mar 27 12:24:58 2025
 Response via : Initial Calibration
 Integrator: ChemStation

Volume Inj. : 1 µl
 Signal #1 Phase : ZB-MR1 Signal #2 Phase: ZB-MR2
 Signal #1 Info : 30M x 0.32mm x0.5 Signal #2 Info : 30M x 0.32mm x 0.25µm

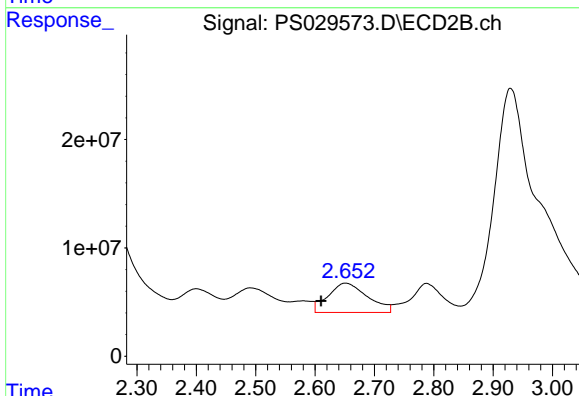




#1 Dalapon

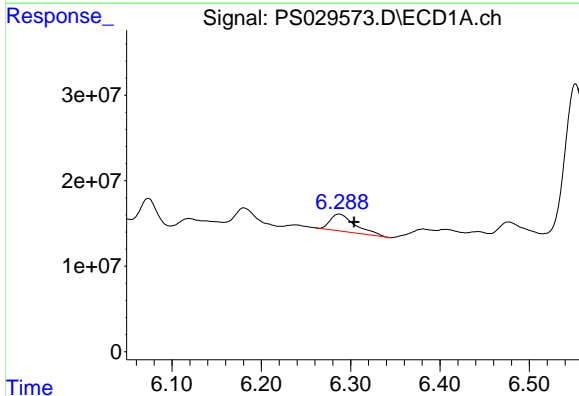
R.T.: 2.575 min
 Delta R.T.: -0.018 min
 Response: 489200260
 Conc: 82.52 ng/ml

Instrument :
 ECD_S
 ClientSampleId :



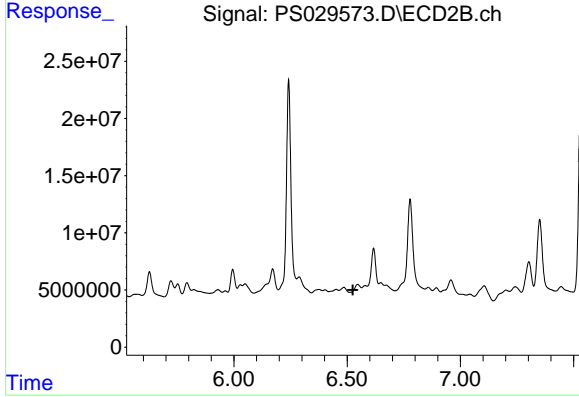
#1 Dalapon

R.T.: 2.651 min
 Delta R.T.: 0.041 min
 Response: 125003878
 Conc: 60.26 ng/ml



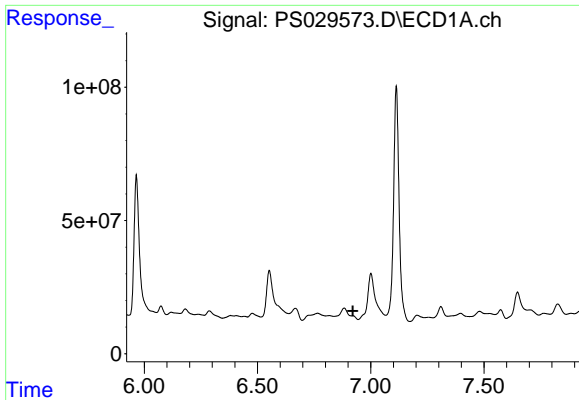
#2 3,5-DICHLOROBENZOIC ACID

R.T.: 6.287 min
 Delta R.T.: -0.017 min
 Response: 38710124
 Conc: 6.77 ng/ml



#2 3,5-DICHLOROBENZOIC ACID

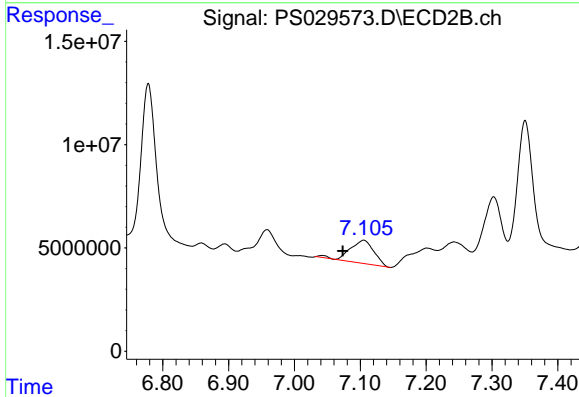
R.T.: 6.546 min
 Delta R.T.: 0.021 min
 Response: -3536972
 Conc: N.D.



#3 4-Nitrophenol

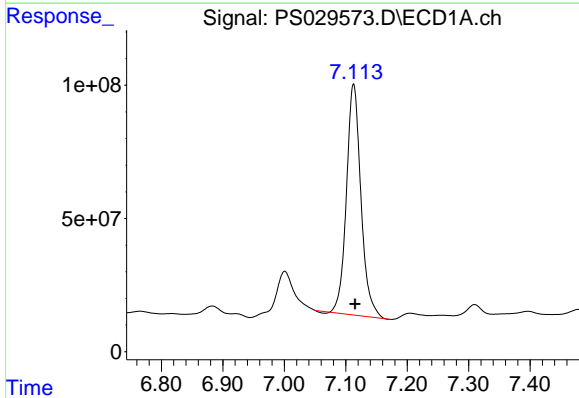
R.T.: 0.000 min
 Exp R.T.: 6.921 min
 Response: 0
 Conc: N.D.

Instrument :
 ECD_S
 ClientSampleId :



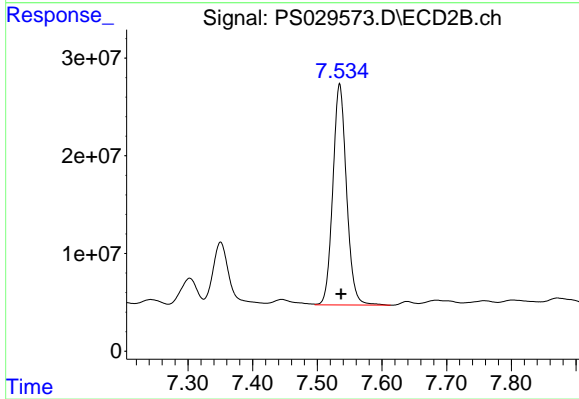
#3 4-Nitrophenol

R.T.: 7.105 min
 Delta R.T.: 0.031 min
 Response: 27881000
 Conc: 34.51 ng/ml



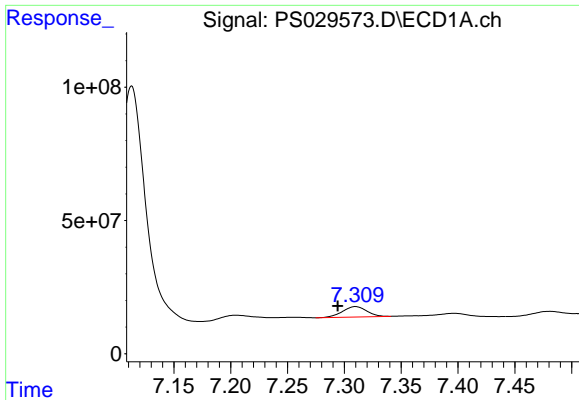
#4 2,4-DCAA

R.T.: 7.113 min
 Delta R.T.: -0.002 min
 Response: 1418727498
 Conc: 369.45 ng/ml



#4 2,4-DCAA

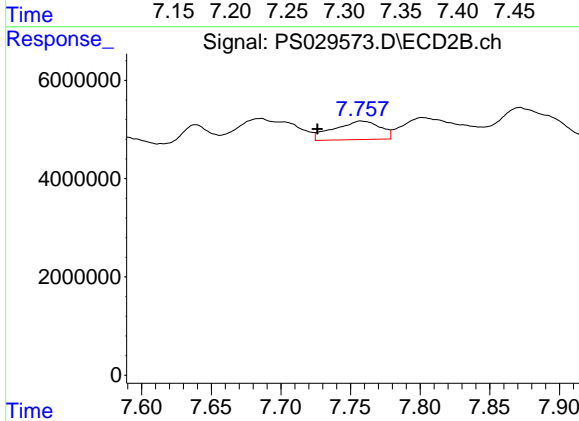
R.T.: 7.535 min
 Delta R.T.: -0.002 min
 Response: 332500993
 Conc: 385.15 ng/ml



#5 DICAMBA

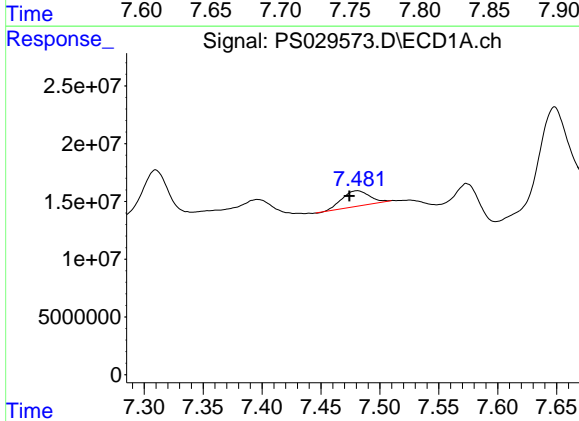
R.T.: 7.310 min
 Delta R.T.: 0.016 min
 Response: 58528430
 Conc: 3.69 ng/ml

Instrument :
 ECD_S
 ClientSampleId :



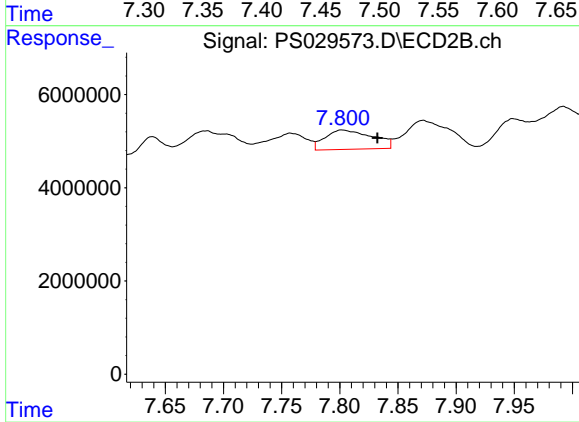
#5 DICAMBA

R.T.: 7.758 min
 Delta R.T.: 0.032 min
 Response: 8738870
 Conc: 1.83 ng/ml



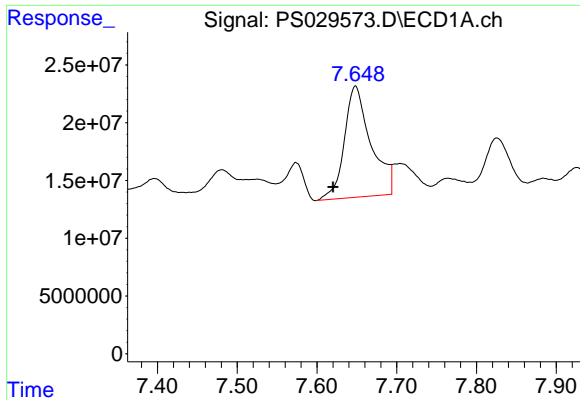
#6 MCP

R.T.: 7.481 min
 Delta R.T.: 0.006 min
 Response: 22907334
 Conc: 2.01 ug/ml



#6 MCP

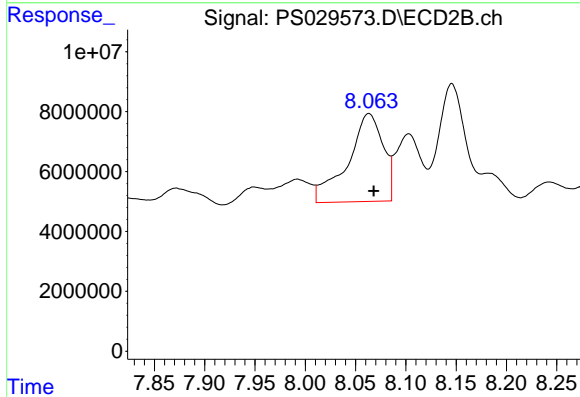
R.T.: 7.802 min
 Delta R.T.: -0.030 min
 Response: 11856951
 Conc: 5.73 ug/ml



#7 MCPA

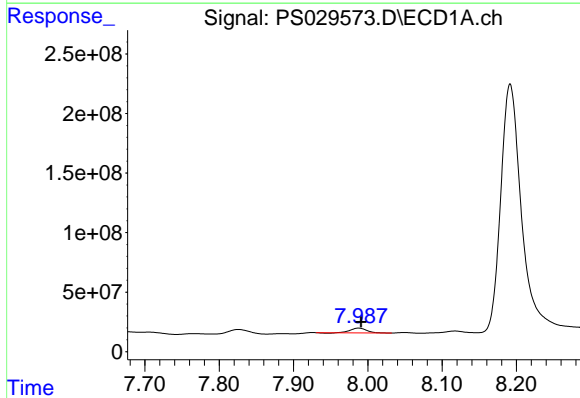
R.T.: 7.648 min
 Delta R.T.: 0.028 min
 Response: 223346703
 Conc: 15.53 ug/ml

Instrument :
 ECD_S
 ClientSampleId :



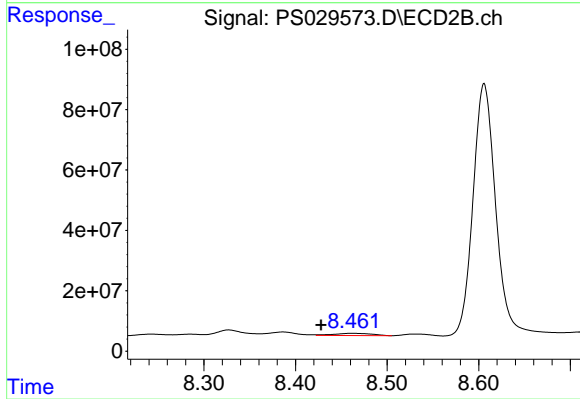
#7 MCPA

R.T.: 8.063 min
 Delta R.T.: -0.005 min
 Response: 71788315
 Conc: 24.98 ug/ml



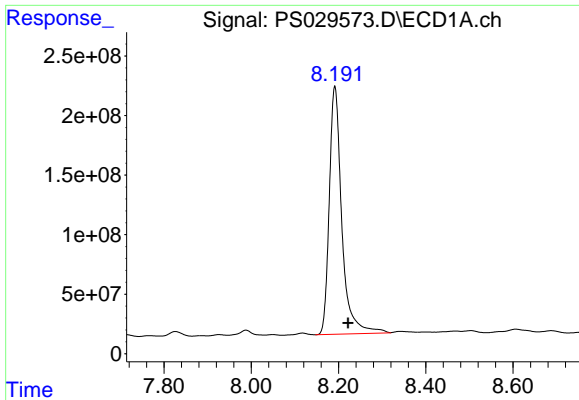
#8 DICHLORPROP

R.T.: 7.988 min
 Delta R.T.: -0.003 min
 Response: 58727767
 Conc: 13.37 ng/ml



#8 DICHLORPROP

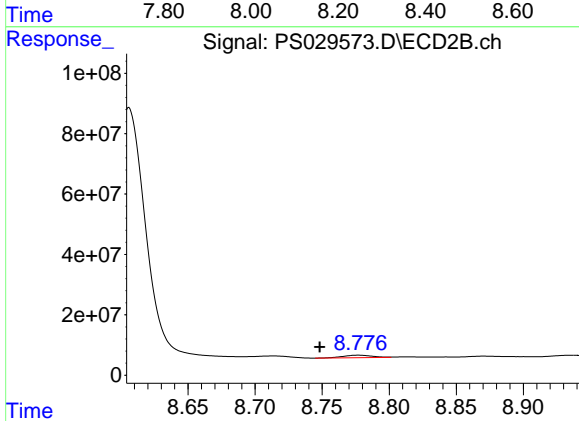
R.T.: 8.462 min
 Delta R.T.: 0.034 min
 Response: 20974107
 Conc: 16.84 ng/ml



#9 2,4-D

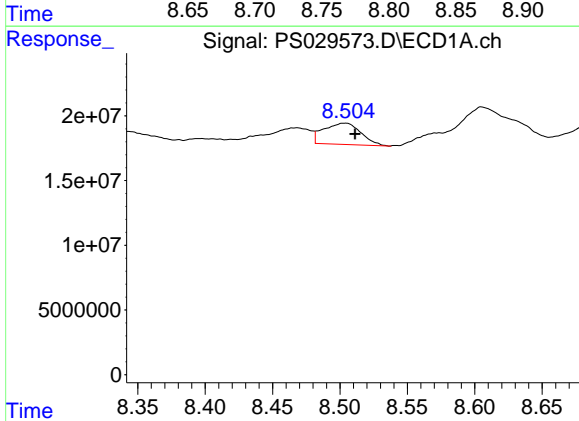
R.T.: 8.192 min
 Delta R.T.: -0.030 min
 Response: 4158808305
 Conc: 1031.00 ng/ml

Instrument :
 ECD_S
 ClientSampleId :



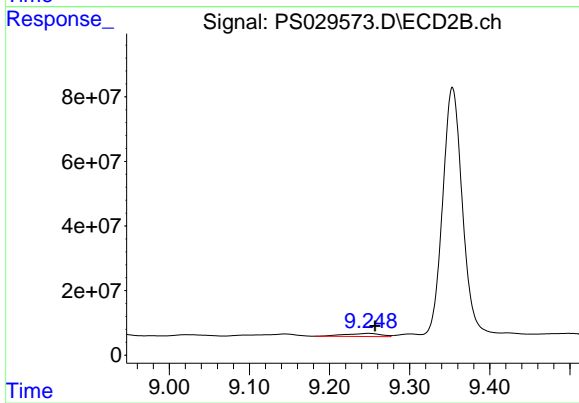
#9 2,4-D

R.T.: 8.777 min
 Delta R.T.: 0.029 min
 Response: 12893343
 Conc: 9.44 ng/ml



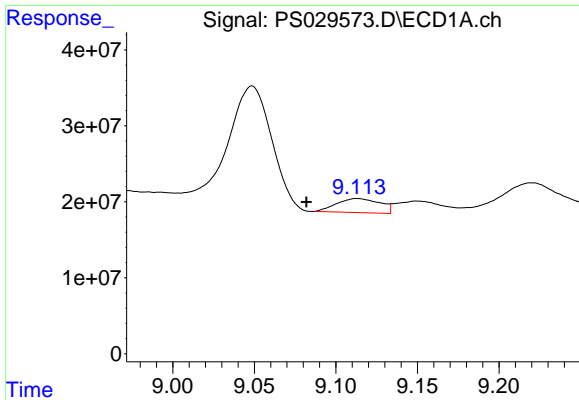
#10 Pentachlorophenol

R.T.: 8.503 min
 Delta R.T.: -0.008 min
 Response: 31462965
 Conc: N.D.



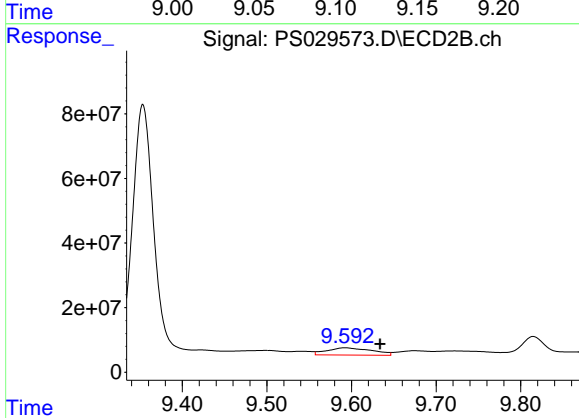
#10 Pentachlorophenol

R.T.: 9.249 min
 Delta R.T.: -0.008 min
 Response: 29376861
 Conc: 1.32 ng/ml

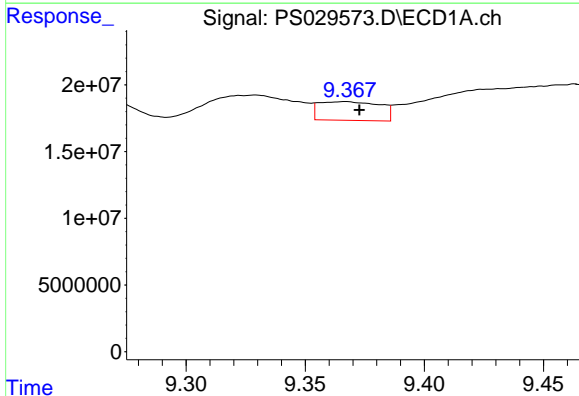


#11 2,4,5-TP (SILVEX)
 R.T.: 9.113 min
 Delta R.T.: 0.031 min
 Response: 34104202
 Conc: 1.46 ng/ml

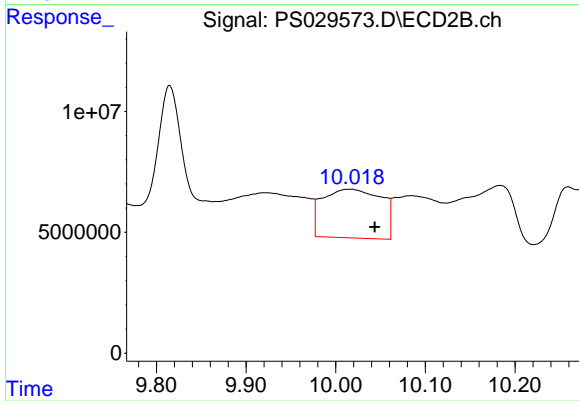
Instrument :
 ECD_S
 ClientSampleId :



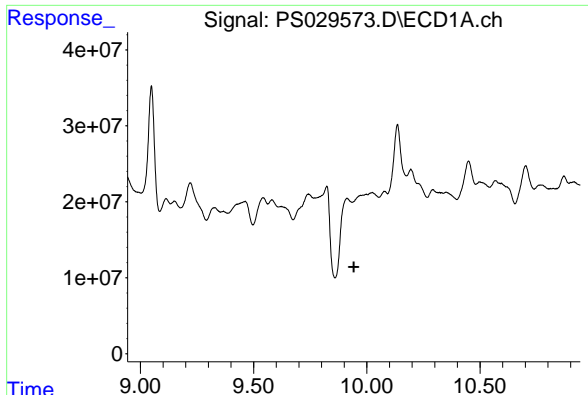
#11 2,4,5-TP (SILVEX)
 R.T.: 9.592 min
 Delta R.T.: -0.041 min
 Response: 82854167
 Conc: 9.39 ng/ml



#12 2,4,5-T
 R.T.: 9.366 min
 Delta R.T.: -0.007 min
 Response: 24978802
 Conc: 1.21 ng/ml



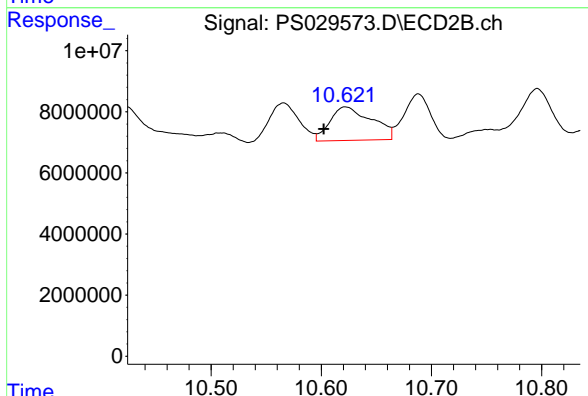
#12 2,4,5-T
 R.T.: 10.016 min
 Delta R.T.: -0.028 min
 Response: 92061715
 Conc: 11.55 ng/ml



#13 2,4-DB

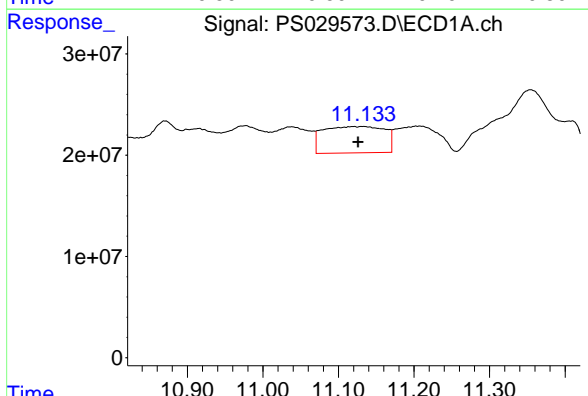
R.T.: 0.000 min
 Exp R.T.: 9.943 min
 Response: 0
 Conc: N.D.

Instrument :
 ECD_S
 ClientSampleId :



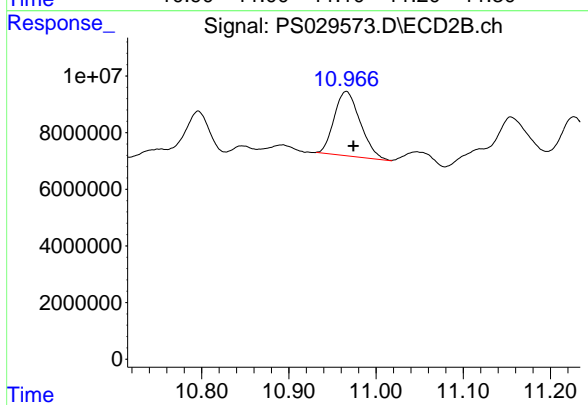
#13 2,4-DB

R.T.: 10.622 min
 Delta R.T.: 0.020 min
 Response: 28994270
 Conc: 31.55 ng/ml



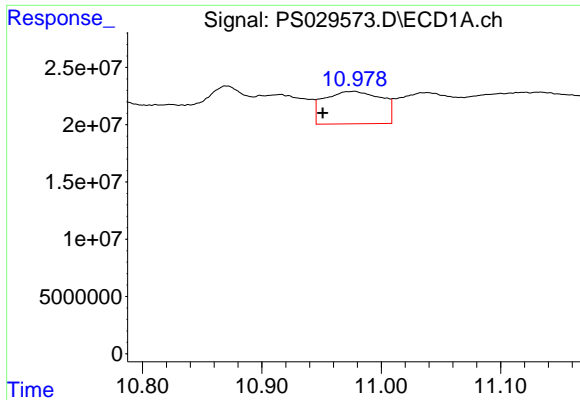
#14 DINOSEB

R.T.: 11.132 min
 Delta R.T.: 0.006 min
 Response: 147070527
 Conc: 8.29 ng/ml



#14 DINOSEB

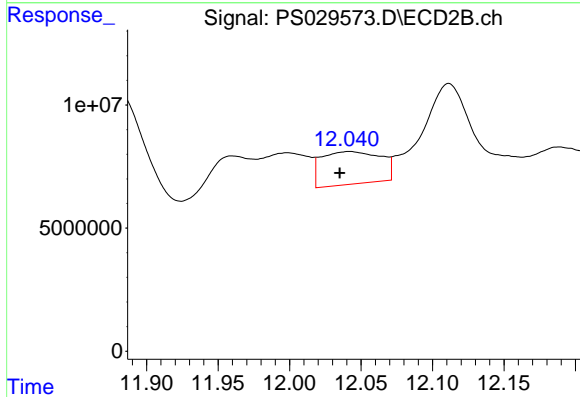
R.T.: 10.966 min
 Delta R.T.: -0.009 min
 Response: 47160746
 Conc: 7.96 ng/ml



#15 Picloram

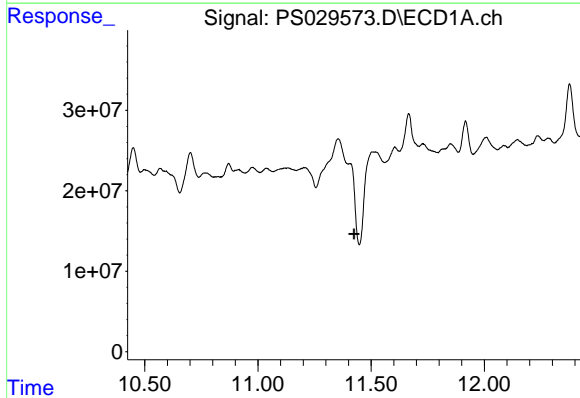
R.T.: 10.976 min
 Delta R.T.: 0.025 min
 Response: 94702565
 Conc: 6.58 ng/ml

Instrument :
 ECD_S
 ClientSampleId :



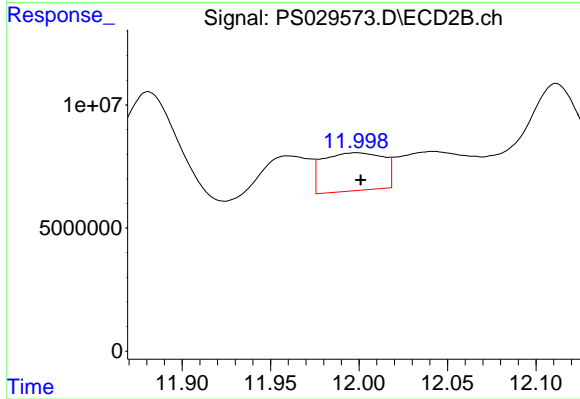
#15 Picloram

R.T.: 12.042 min
 Delta R.T.: 0.007 min
 Response: 38067527
 Conc: 3.05 ng/ml



#16 DCPA

R.T.: 0.000 min
 Exp R.T. : 11.424 min
 Response: 0
 Conc: N.D.



#16 DCPA

R.T.: 11.998 min
 Delta R.T.: -0.003 min
 Response: 36667550
 Conc: 3.27 ng/ml