

Data Path : Z:\pestpcbsrv\HPCHEM1\ECD_S\Data\PS032825\
 Data File : PS029581.D
 Signal(s) : Signal #1: ECD1A.ch Signal #2: ECD2B.ch
 Acq On : 27 Mar 2025 20:02
 Operator : AR\AJ
 Sample : Q1648-01
 Misc :
 ALS Vial : 22 Sample Multiplier: 1

Instrument :
 ECD_S
 ClientSampleId :

Integration File signal 1: autoint1.e
 Integration File signal 2: autoint2.e
 Quant Time: Mar 28 03:22:55 2025
 Quant Method : Z:\pestpcbsrv\HPCHEM1\ECD_S\Method\PS032825.M
 Quant Title : 8080.M
 QLast Update : Thu Mar 27 12:24:58 2025
 Response via : Initial Calibration
 Integrator: ChemStation

Volume Inj. : 1 µl
 Signal #1 Phase : ZB-MR2 Signal #2 Phase: ZB-MR2
 Signal #1 Info : 30M x 0.32mm x0.5 Signal #2 Info : 30M x 0.32mm x 0.25µm

Compound	RT#1	RT#2	Resp#1	Resp#2	ng/ml	ng/ml

System Monitoring Compounds						
4) S 2,4-DCAA	7.111	7.533	1673.6E6	278.9E6	435.826	323.068 #
Target Compounds						
2) T 3,5-DICHL...	6.286	6.540	52782583	3567573	9.233	2.895 #
3) T 4-Nitroph...	6.920	7.047f	10968650	7432138	10.309	9.200
5) T DICAMBA	7.320f	7.707	-13443082	14062254	N.D.	2.941
6) T MCPP	7.475	7.816	58612388	46496735	5.149	22.457 #
7) T MCPA	7.608	8.079	18936213	51675103	1.317	17.979 #
8) T DICHLORPROP	7.980	8.420	13900382	30882285	3.165	24.793 #
9) T 2,4-D	8.192f	8.778f	1237.6E6	7827773	306.804	5.731 #
10) T Pentachlo...	8.494	9.246	108.3E6	33738564	1.823	1.520
11) T 2,4,5-TP ...	9.091	9.622	98287821	74540602	4.219	8.447 #
12) T 2,4,5-T	9.363	10.046	57290972	102.2E6	2.781	12.822 #
13) T 2,4-DB	0.000	10.615	0	32562235	N.D.	35.434
14) T DINOSEB	11.168f	0.000	109.0E6	0	6.146	N.D. #
15) T Picloram	10.968	12.044	171.9E6	60997549	11.946	4.889 #
16) T DCPA	0.000	11.965f	0	70345118	N.D.	6.274

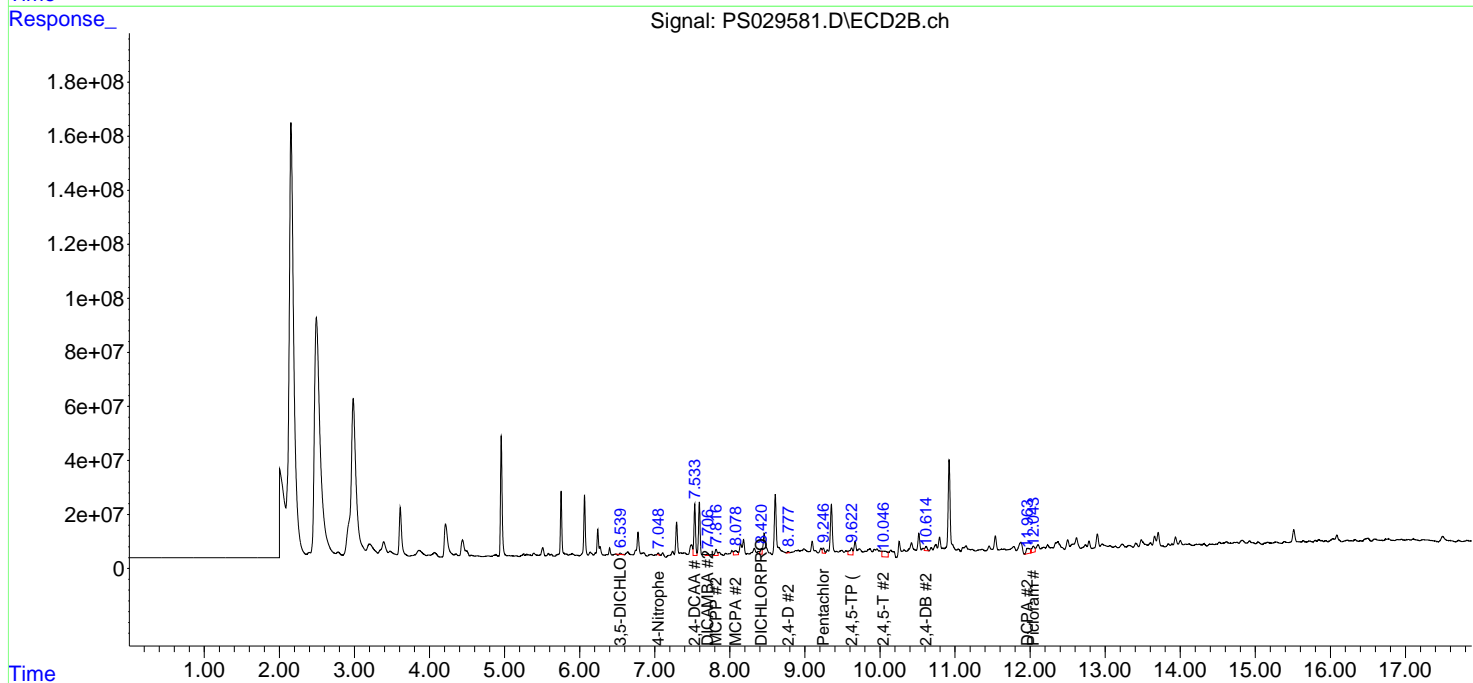
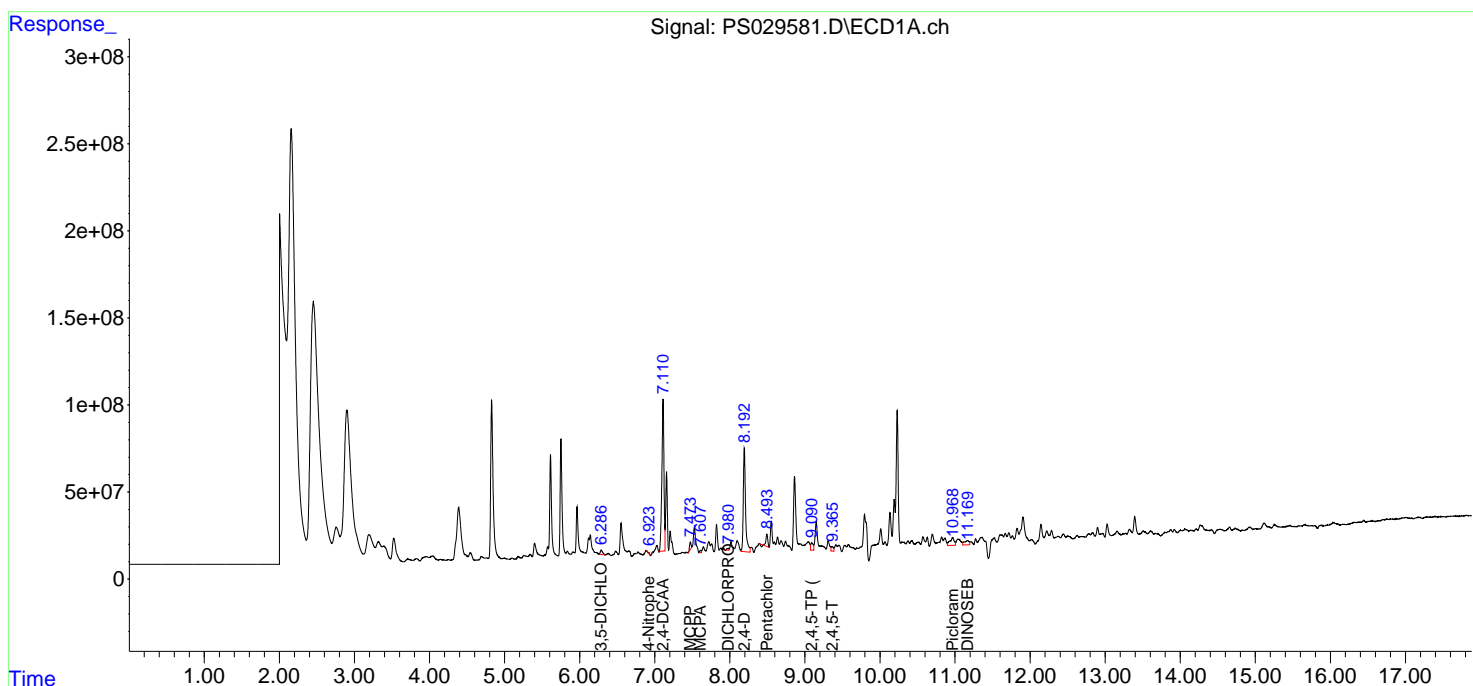
(f)=RT Delta > 1/2 Window (#)=Amounts differ by > 25% (m)=manual int.

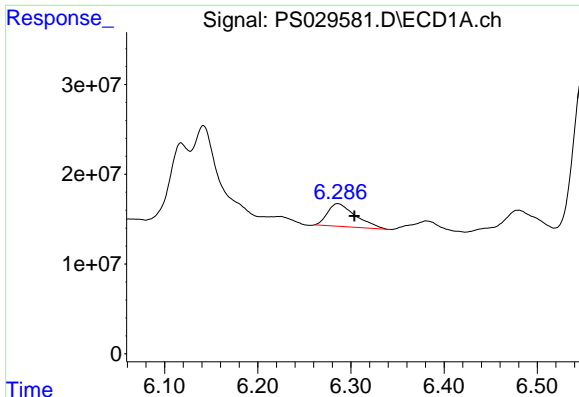
Data Path : Z:\pestpcbsrv\HPCHEM1\ECD_S\Data\PS032825\
 Data File : PS029581.D
 Signal(s) : Signal #1: ECD1A.ch Signal #2: ECD2B.ch
 Acq On : 27 Mar 2025 20:02
 Operator : AR\AJ
 Sample : Q1648-01
 Misc :
 ALS Vial : 22 Sample Multiplier: 1

Instrument :
 ECD_S
 ClientSampleId :

Integration File signal 1: autoint1.e
 Integration File signal 2: autoint2.e
 Quant Time: Mar 28 03:22:55 2025
 Quant Method : Z:\pestpcbsrv\HPCHEM1\ECD_S\Method\PS032825.M
 Quant Title : 8080.M
 QLast Update : Thu Mar 27 12:24:58 2025
 Response via : Initial Calibration
 Integrator: ChemStation

Volume Inj. : 1 µl
 Signal #1 Phase : ZB-MR1 Signal #2 Phase: ZB-MR2
 Signal #1 Info : 30M x 0.32mm x0.5 Signal #2 Info : 30M x 0.32mm x 0.25µm

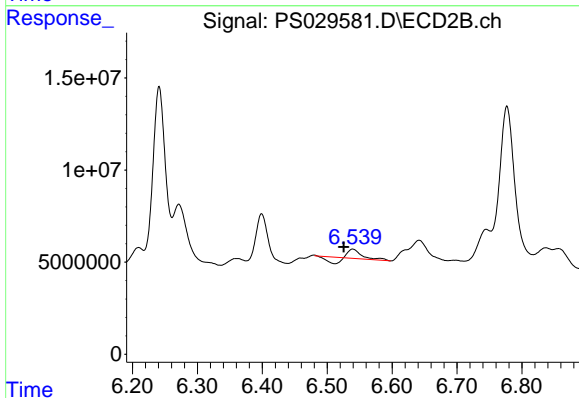




#2 3,5-DICHLORO BENZOIC ACID

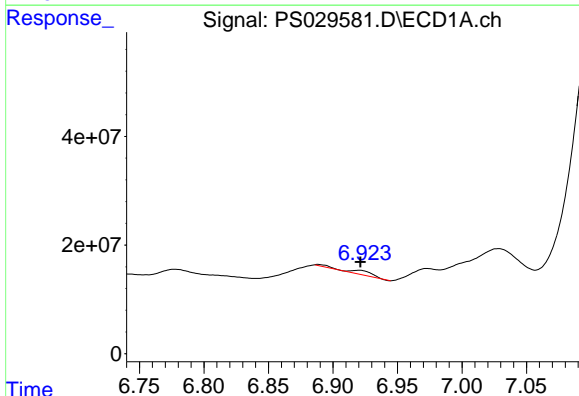
R.T.: 6.286 min
 Delta R.T.: -0.018 min
 Response: 52782583
 Conc: 9.23 ng/ml

Instrument :
 ECD_S
 ClientSampleId :



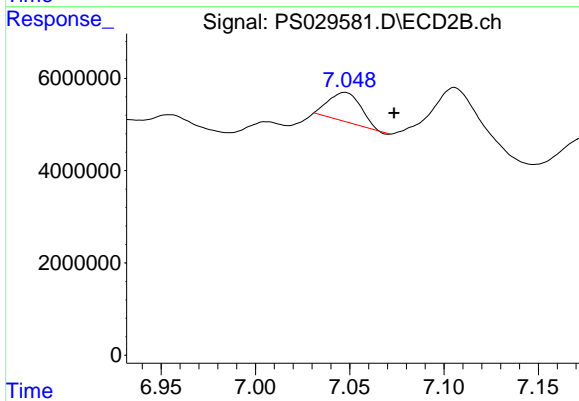
#2 3,5-DICHLORO BENZOIC ACID

R.T.: 6.540 min
 Delta R.T.: 0.014 min
 Response: 3567573
 Conc: 2.90 ng/ml



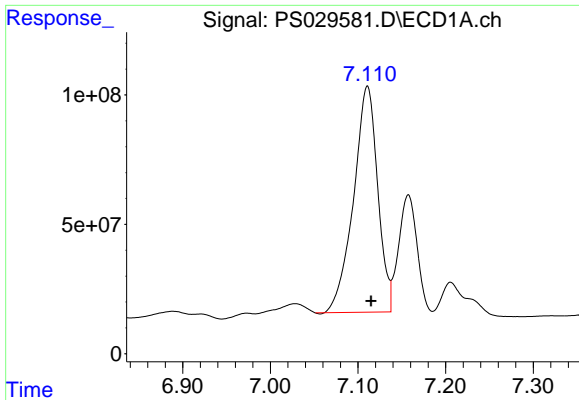
#3 4-Nitrophenol

R.T.: 6.920 min
 Delta R.T.: -0.002 min
 Response: 10968650
 Conc: 10.31 ng/ml



#3 4-Nitrophenol

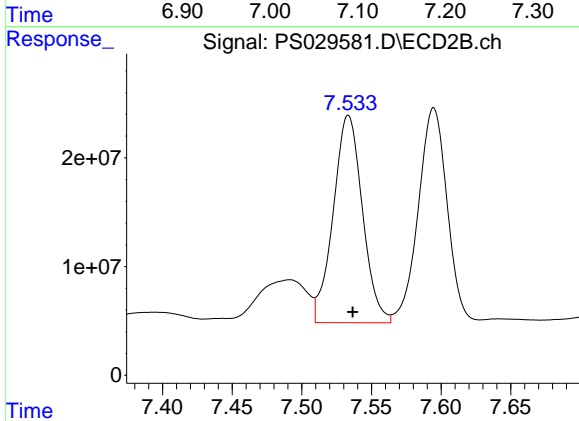
R.T.: 7.047 min
 Delta R.T.: -0.026 min
 Response: 7432138
 Conc: 9.20 ng/ml



#4 2,4-DCAA

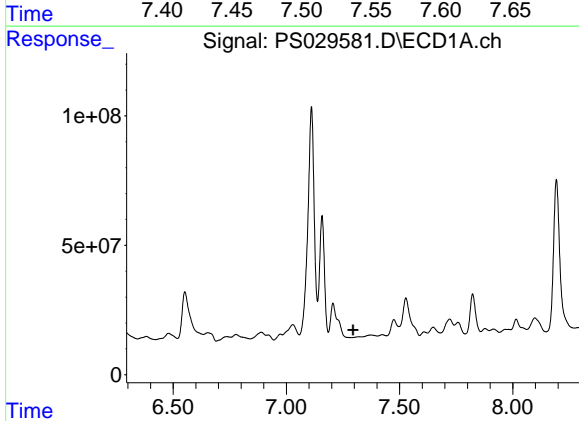
R.T.: 7.111 min
 Delta R.T.: -0.004 min
 Response: 1673612639
 Conc: 435.83 ng/ml

Instrument :
 ECD_S
 ClientSampleId :



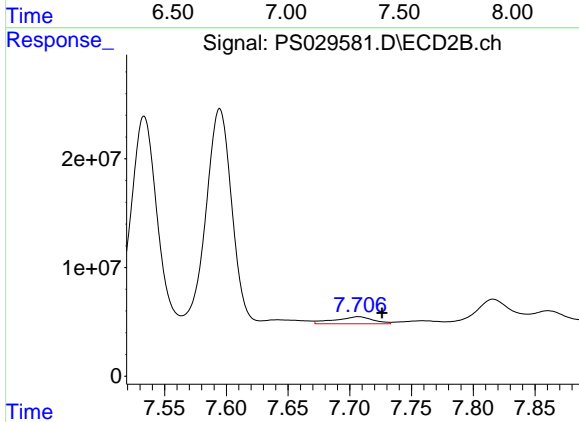
#4 2,4-DCAA

R.T.: 7.533 min
 Delta R.T.: -0.003 min
 Response: 278903333
 Conc: 323.07 ng/ml



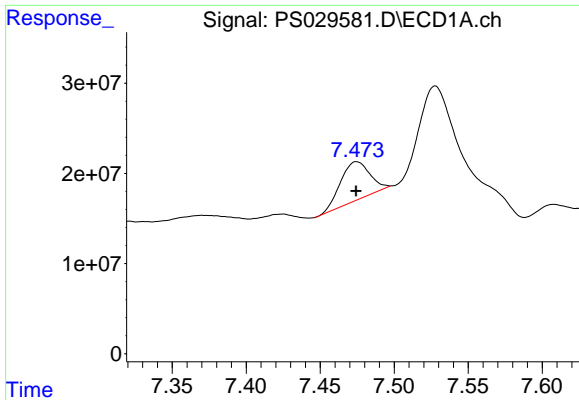
#5 DICAMBA

R.T.: 7.320 min
 Delta R.T.: 0.026 min
 Response: -13443082
 Conc: N.D.



#5 DICAMBA

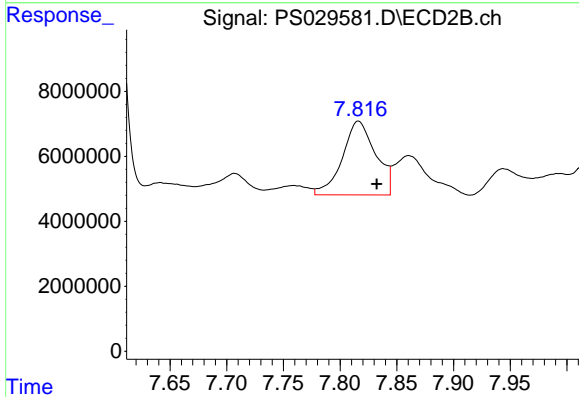
R.T.: 7.707 min
 Delta R.T.: -0.019 min
 Response: 14062254
 Conc: 2.94 ng/ml



#6 MCPP

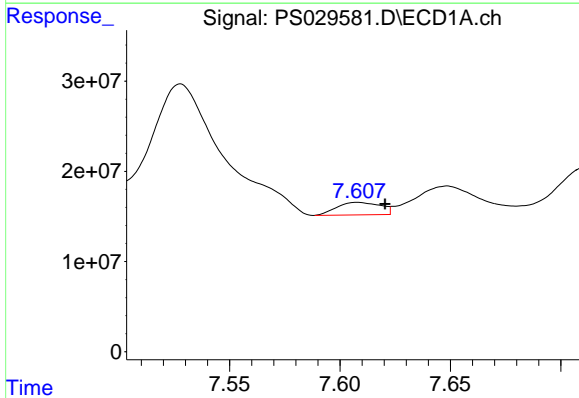
R.T.: 7.475 min
 Delta R.T.: 0.000 min
 Response: 58612388
 Conc: 5.15 ug/ml

Instrument :
 ECD_S
 ClientSampleId :



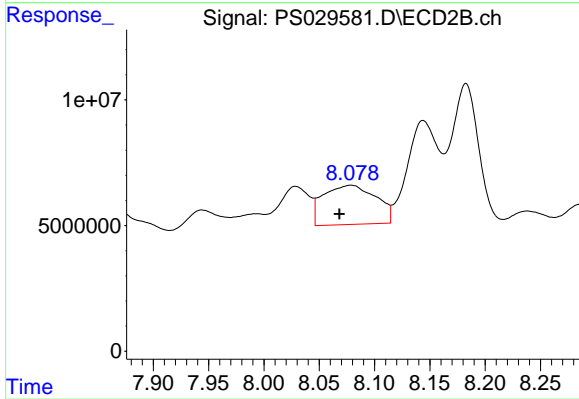
#6 MCPP

R.T.: 7.816 min
 Delta R.T.: -0.016 min
 Response: 46496735
 Conc: 22.46 ug/ml



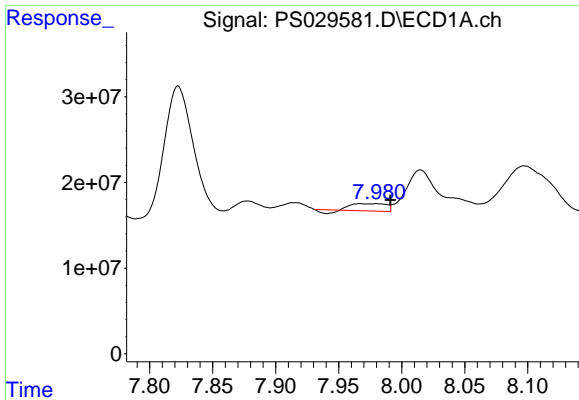
#7 MCPA

R.T.: 7.608 min
 Delta R.T.: -0.012 min
 Response: 18936213
 Conc: 1.32 ug/ml



#7 MCPA

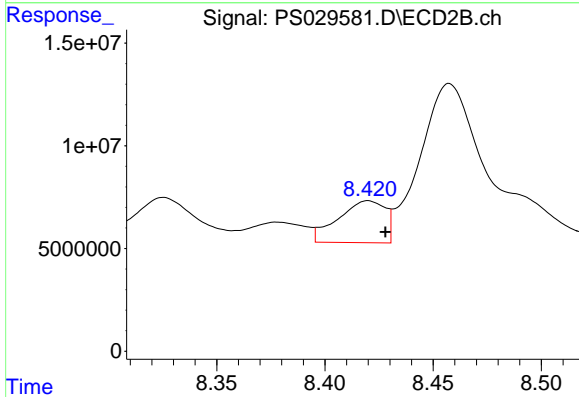
R.T.: 8.079 min
 Delta R.T.: 0.010 min
 Response: 51675103
 Conc: 17.98 ug/ml



#8 DICHLORPROP

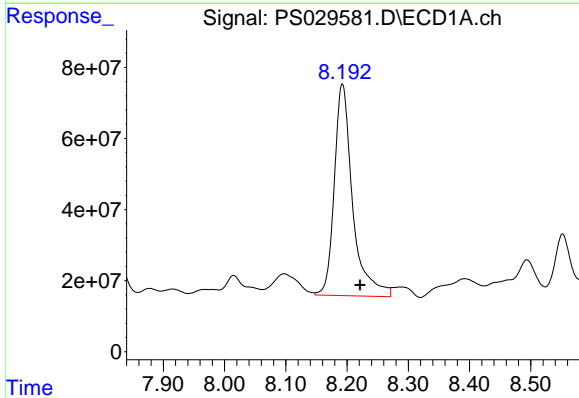
R.T.: 7.980 min
 Delta R.T.: -0.011 min
 Response: 13900382
 Conc: 3.16 ng/ml

Instrument :
 ECD_S
 ClientSampleId :



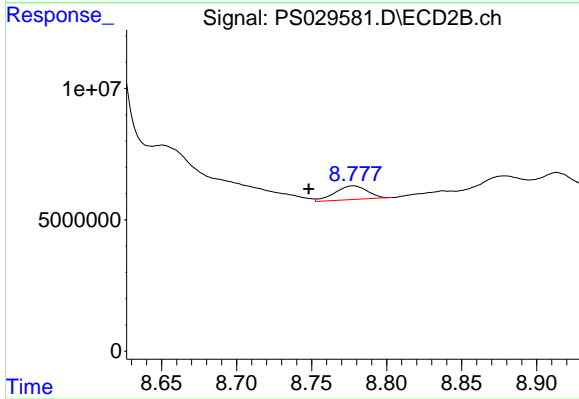
#8 DICHLORPROP

R.T.: 8.420 min
 Delta R.T.: -0.008 min
 Response: 30882285
 Conc: 24.79 ng/ml



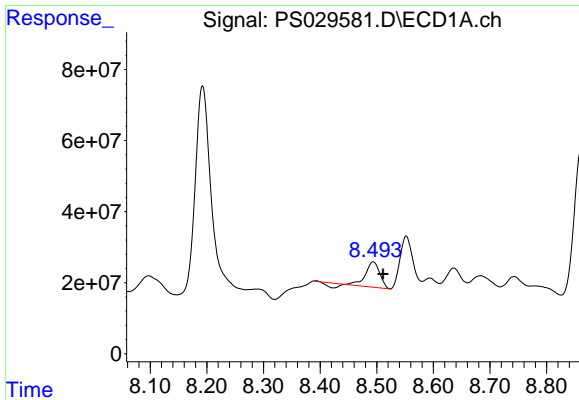
#9 2,4-D

R.T.: 8.192 min
 Delta R.T.: -0.029 min
 Response: 1237576322
 Conc: 306.80 ng/ml



#9 2,4-D

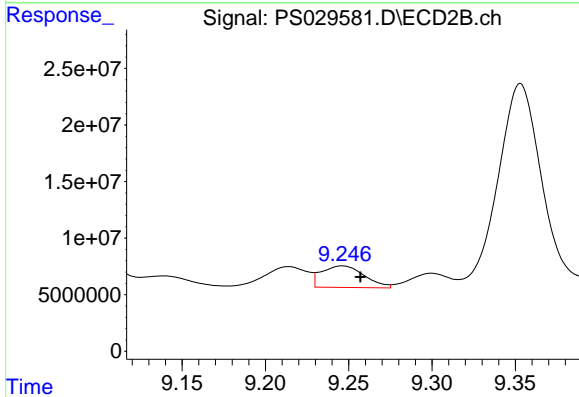
R.T.: 8.778 min
 Delta R.T.: 0.030 min
 Response: 7827773
 Conc: 5.73 ng/ml



#10 Pentachlorophenol

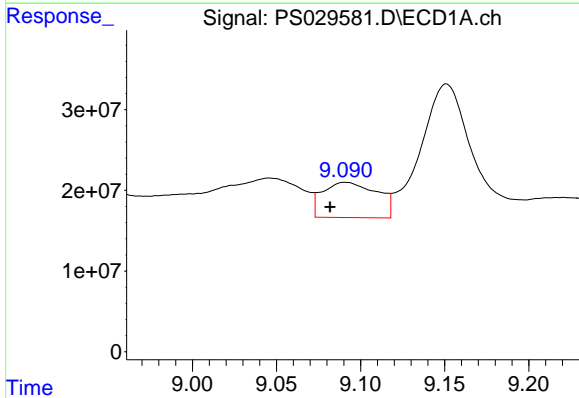
R.T.: 8.494 min
 Delta R.T.: -0.017 min
 Response: 108345149
 Conc: 1.82 ng/ml

Instrument :
 ECD_S
 ClientSampleId :



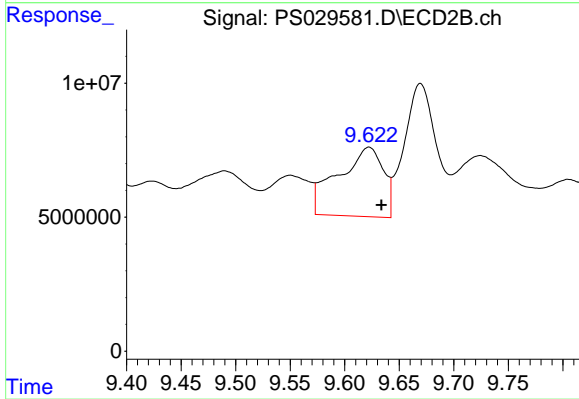
#10 Pentachlorophenol

R.T.: 9.246 min
 Delta R.T.: -0.011 min
 Response: 33738564
 Conc: 1.52 ng/ml



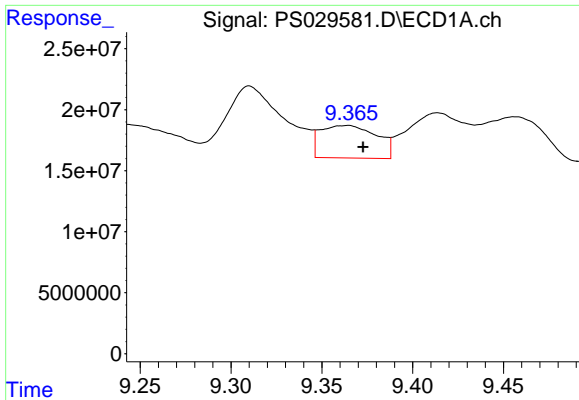
#11 2,4,5-TP (SILVEX)

R.T.: 9.091 min
 Delta R.T.: 0.009 min
 Response: 98287821
 Conc: 4.22 ng/ml



#11 2,4,5-TP (SILVEX)

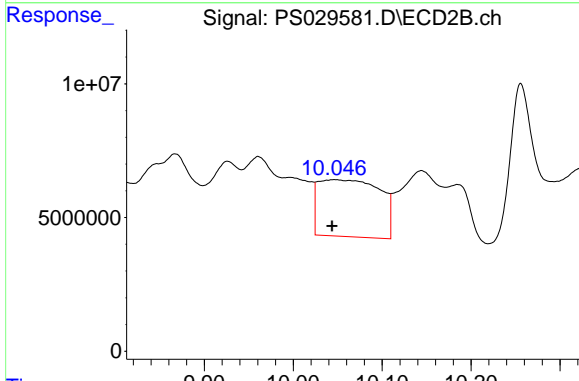
R.T.: 9.622 min
 Delta R.T.: -0.011 min
 Response: 74540602
 Conc: 8.45 ng/ml



#12 2,4,5-T

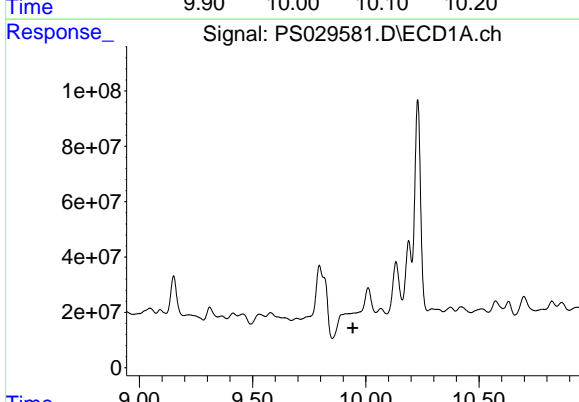
R.T.: 9.363 min
 Delta R.T.: -0.010 min
 Response: 57290972
 Conc: 2.78 ng/ml

Instrument :
 ECD_S
 ClientSampleId :



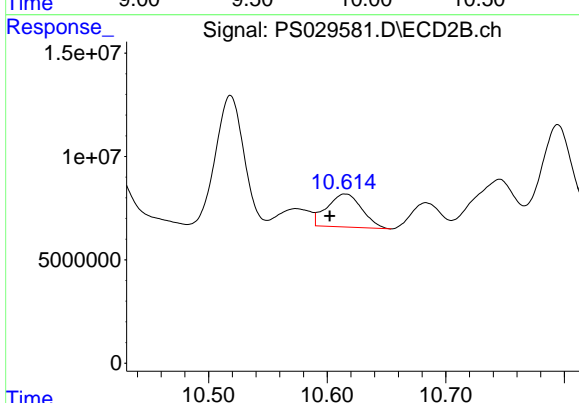
#12 2,4,5-T

R.T.: 10.046 min
 Delta R.T.: 0.003 min
 Response: 102198775
 Conc: 12.82 ng/ml



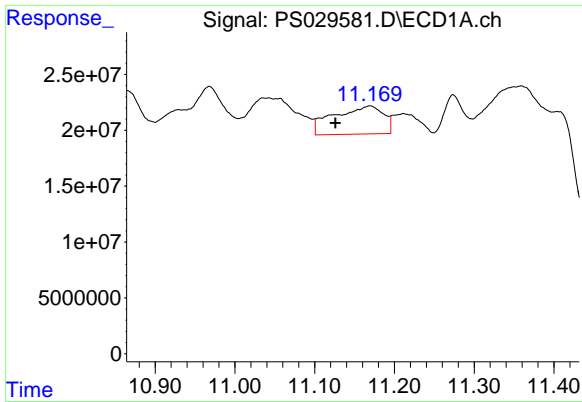
#13 2,4-DB

R.T.: 0.000 min
 Exp R.T. : 9.943 min
 Response: 0
 Conc: N.D.



#13 2,4-DB

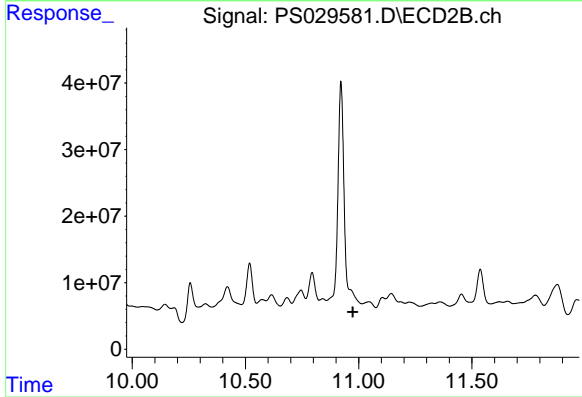
R.T.: 10.615 min
 Delta R.T.: 0.013 min
 Response: 32562235
 Conc: 35.43 ng/ml



#14 DINOSEB

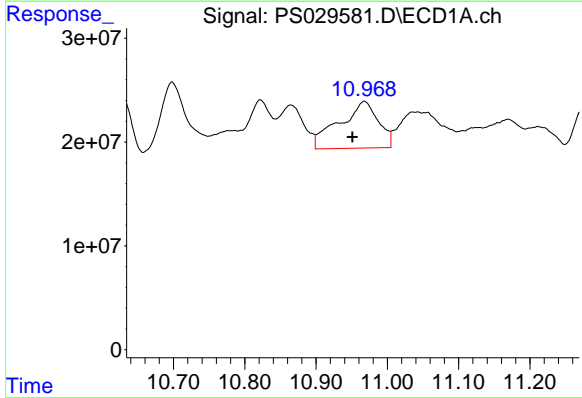
R.T.: 11.168 min
 Delta R.T.: 0.042 min
 Response: 108968585
 Conc: 6.15 ng/ml

Instrument :
 ECD_S
 ClientSampleId :



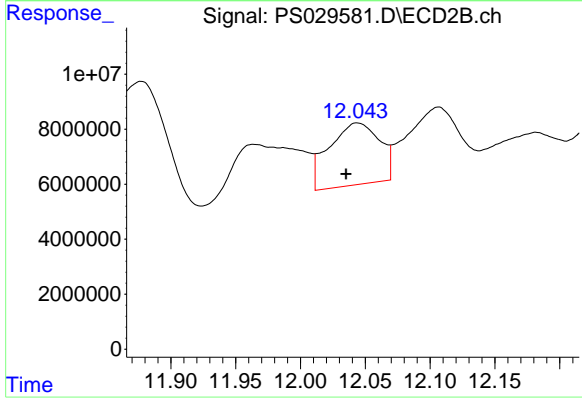
#14 DINOSEB

R.T.: 0.000 min
 Exp R.T. : 10.974 min
 Response: 0
 Conc: N.D.



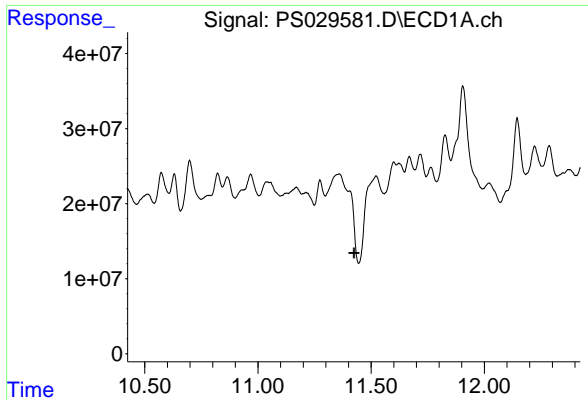
#15 Picloram

R.T.: 10.968 min
 Delta R.T.: 0.017 min
 Response: 171948705
 Conc: 11.95 ng/ml



#15 Picloram

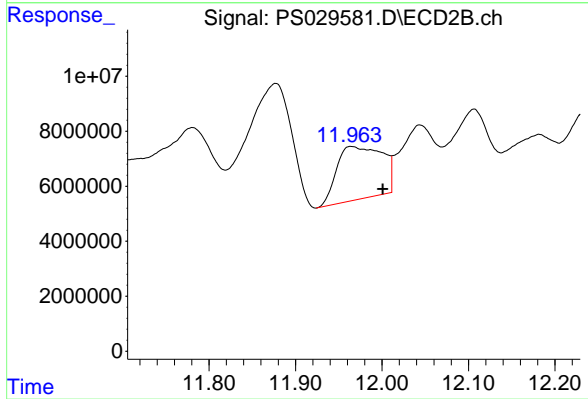
R.T.: 12.044 min
 Delta R.T.: 0.009 min
 Response: 60997549
 Conc: 4.89 ng/ml



#16 DCPA

R.T.: 0.000 min
 Exp R.T.: 11.424 min
 Response: 0
 Conc: N.D.

Instrument :
 ECD_S
 ClientSampleId :



#16 DCPA

R.T.: 11.965 min
 Delta R.T.: -0.036 min
 Response: 70345118
 Conc: 6.27 ng/ml