

Data Path : Z:\pestpcbsrv\HPCHEM1\ECD_S\Data\PS032825\
 Data File : PS029583.D
 Signal(s) : Signal #1: ECD1A.ch Signal #2: ECD2B.ch
 Acq On : 27 Mar 2025 20:50
 Operator : AR\AJ
 Sample : Q1648-05
 Misc :
 ALS Vial : 24 Sample Multiplier: 1

Instrument :
 ECD_S
 ClientSampleId :

Integration File signal 1: autoint1.e
 Integration File signal 2: autoint2.e
 Quant Time: Mar 28 03:23:17 2025
 Quant Method : Z:\pestpcbsrv\HPCHEM1\ECD_S\Method\PS032825.M
 Quant Title : 8080.M
 QLast Update : Thu Mar 27 12:24:58 2025
 Response via : Initial Calibration
 Integrator: ChemStation

Volume Inj. : 1 µl
 Signal #1 Phase : ZB-MR2 Signal #2 Phase: ZB-MR2
 Signal #1 Info : 30M x 0.32mm x0.5 Signal #2 Info : 30M x 0.32mm x 0.25µm

	Compound	RT#1	RT#2	Resp#1	Resp#2	ng/ml	ng/ml

System Monitoring Compounds							
4) S	2,4-DCAA	7.111	7.534	976.7E6	170.5E6	254.339	197.447
Target Compounds							
2) T	3,5-DICHL...	6.290	6.540	26857817	5180230	4.698	4.204
3) T	4-Nitroph...	6.934	7.107f	-35535735	37395476	N.D.	46.291
5) T	DICAMBA	7.318	7.699f	5698114	9108039	<MDL	1.905 #
6) T	MCPD	7.492	7.820	28870703	54666337	2.536	26.403 #
7) T	MCPA	7.636	8.078	399.5E6	74693262	27.776	25.988
8) T	DICHLORPROP	7.966	8.421	3148201	10275427	<MDL	8.249 #
9) T	2,4-D	8.232	8.710f	204.3E6	34873140	50.652	25.530 #
10) T	Pentachlo...	8.496	9.277	25205169	26634750	<MDL	1.200 #
11) T	2,4,5-TP ...	9.066	9.619	240.8E6	21913727	10.339	2.483 #
12) T	2,4,5-T	9.365	10.017f	29935204	116.0E6	1.453	14.550 #
13) T	2,4-DB	9.937	10.596	61265106	96060112	32.087	104.532 #
14) T	DINOSEB	11.134	0.000	75510808	0	4.259	N.D. #
15) T	Picloram	10.978f	12.045	86654627	47301496	6.020	3.791 #
16) T	DCPA	11.419	11.978	111.2E6	62307894	3.857	5.557 #

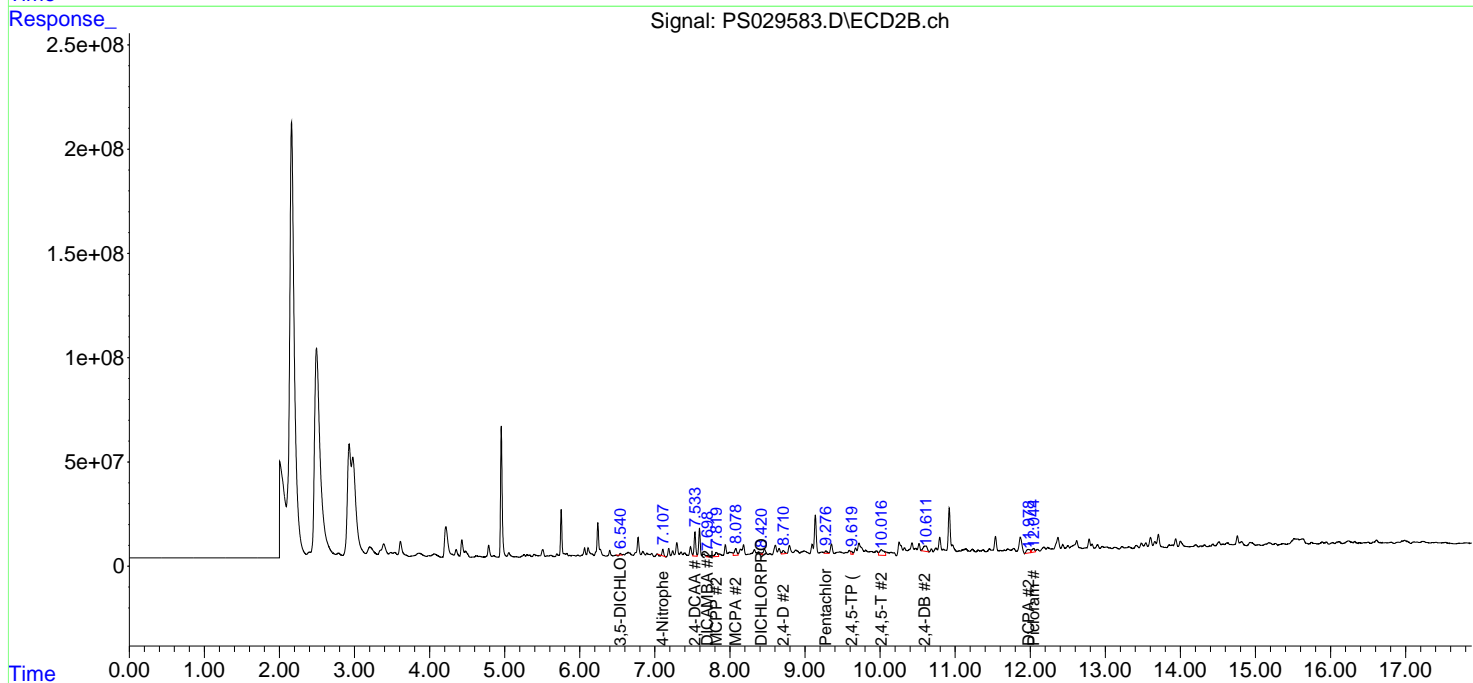
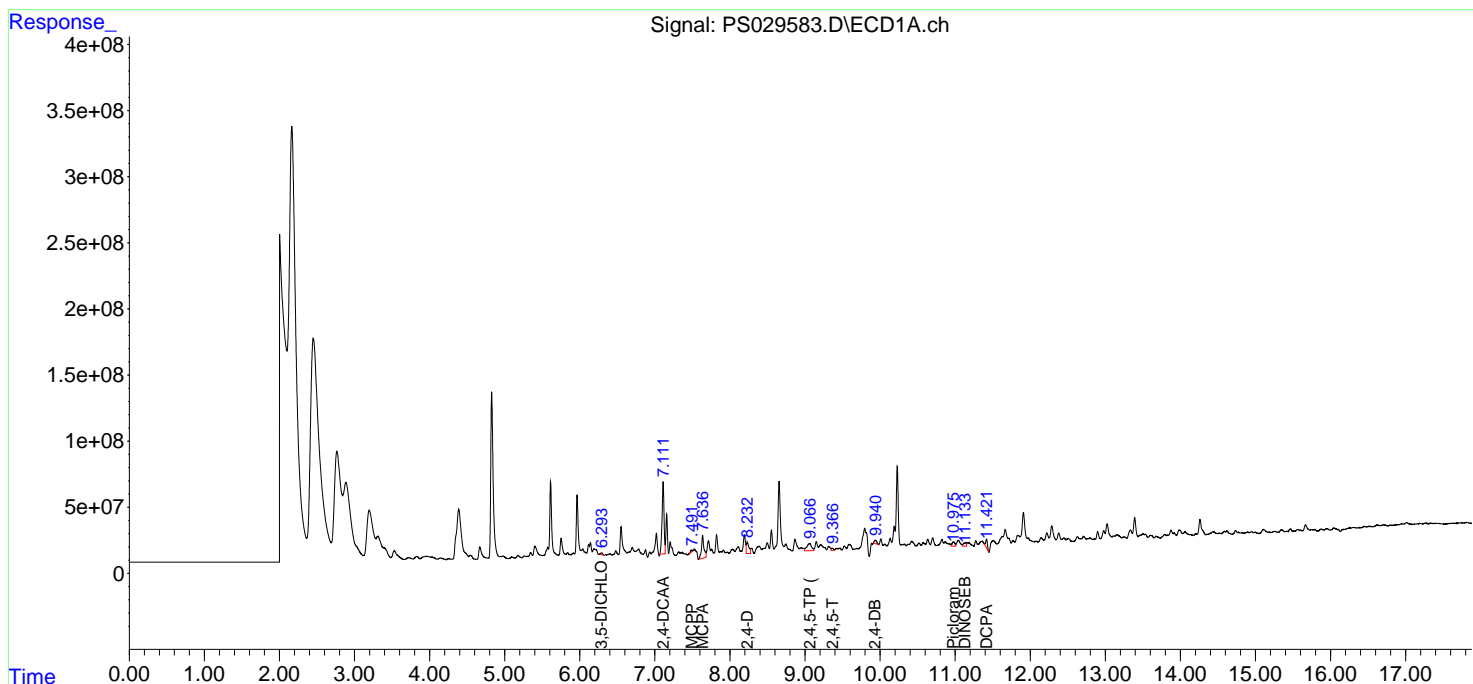
(f)=RT Delta > 1/2 Window (#)=Amounts differ by > 25% (m)=manual int.

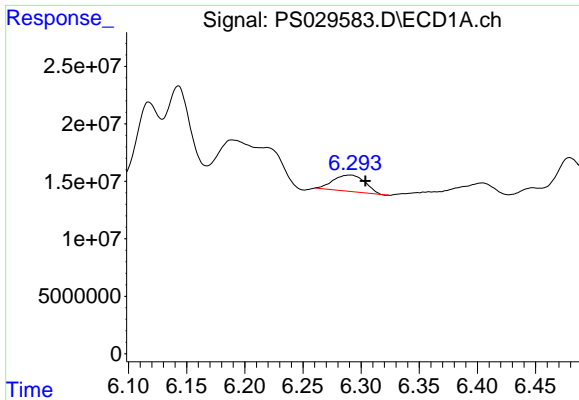
Data Path : Z:\pestpcbsrv\HPCHEM1\ECD_S\Data\PS032825\
 Data File : PS029583.D
 Signal(s) : Signal #1: ECD1A.ch Signal #2: ECD2B.ch
 Acq On : 27 Mar 2025 20:50
 Operator : AR\AJ
 Sample : Q1648-05
 Misc :
 ALS Vial : 24 Sample Multiplier: 1

Instrument :
 ECD_S
 ClientSampleId :

Integration File signal 1: autoint1.e
 Integration File signal 2: autoint2.e
 Quant Time: Mar 28 03:23:17 2025
 Quant Method : Z:\pestpcbsrv\HPCHEM1\ECD_S\Method\PS032825.M
 Quant Title : 8080.M
 QLast Update : Thu Mar 27 12:24:58 2025
 Response via : Initial Calibration
 Integrator: ChemStation

Volume Inj. : 1 µl
 Signal #1 Phase : ZB-MR1 Signal #2 Phase: ZB-MR2
 Signal #1 Info : 30M x 0.32mm x0.5 Signal #2 Info : 30M x 0.32mm x 0.25µm

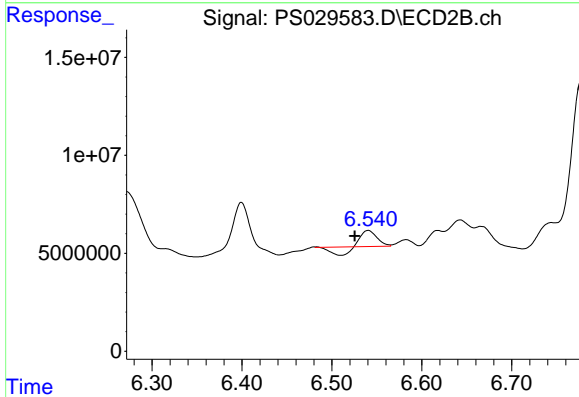




#2 3,5-DICHLORO BENZOIC ACID

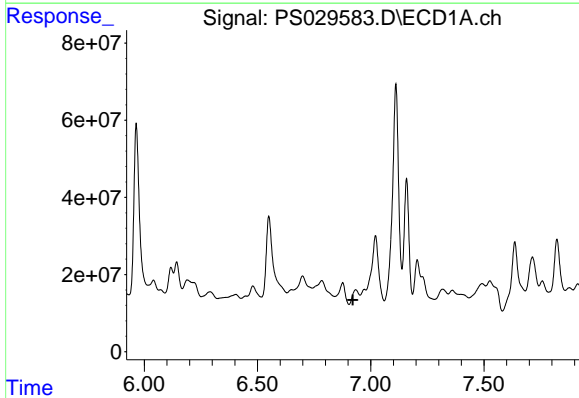
R.T.: 6.290 min
 Delta R.T.: -0.014 min
 Response: 26857817
 Conc: 4.70 ng/ml

Instrument :
 ECD_S
 ClientSampleId :



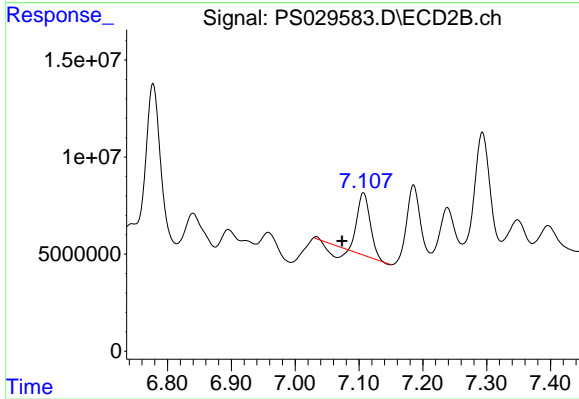
#2 3,5-DICHLORO BENZOIC ACID

R.T.: 6.540 min
 Delta R.T.: 0.015 min
 Response: 5180230
 Conc: 4.20 ng/ml



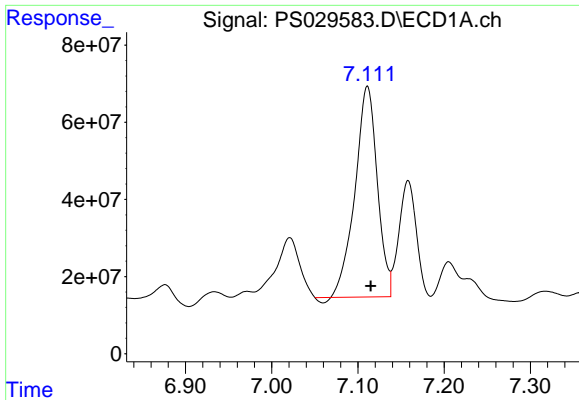
#3 4-Nitrophenol

R.T.: 6.934 min
 Delta R.T.: 0.013 min
 Response: -35535735
 Conc: N.D.



#3 4-Nitrophenol

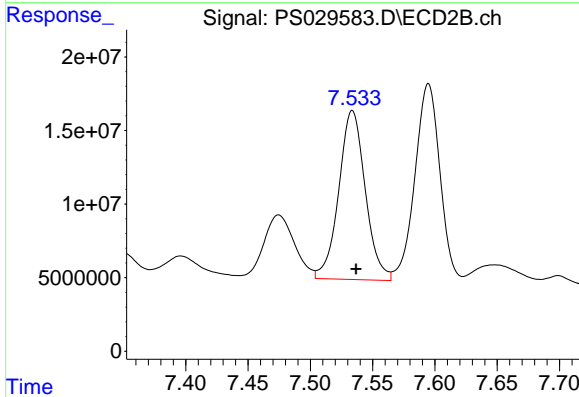
R.T.: 7.107 min
 Delta R.T.: 0.033 min
 Response: 37395476
 Conc: 46.29 ng/ml



#4 2,4-DCAA

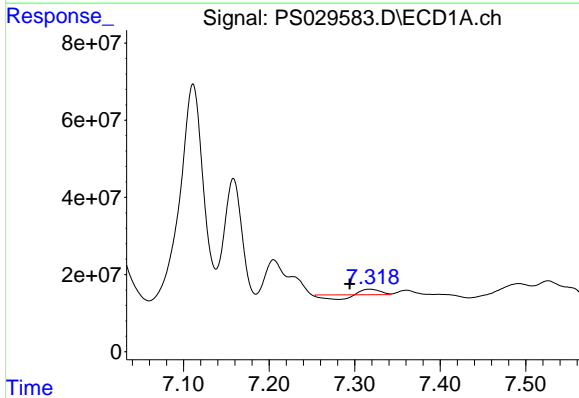
R.T.: 7.111 min
 Delta R.T.: -0.004 min
 Response: 976687173
 Conc: 254.34 ng/ml

Instrument :
 ECD_S
 ClientSampleId :



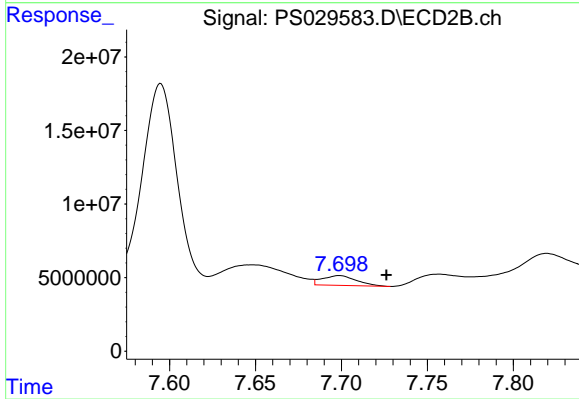
#4 2,4-DCAA

R.T.: 7.534 min
 Delta R.T.: -0.003 min
 Response: 170454983
 Conc: 197.45 ng/ml



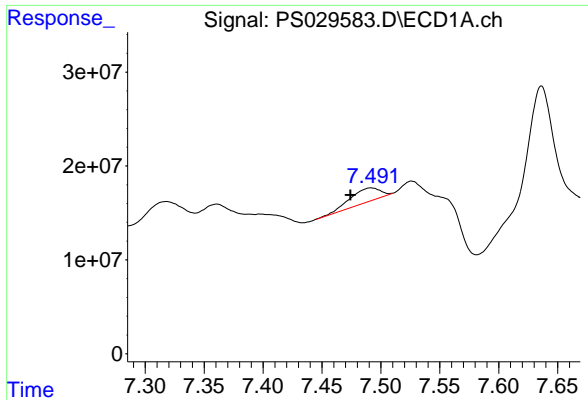
#5 DICAMBA

R.T.: 7.318 min
 Delta R.T.: 0.024 min
 Response: 5698114
 Conc: N.D.



#5 DICAMBA

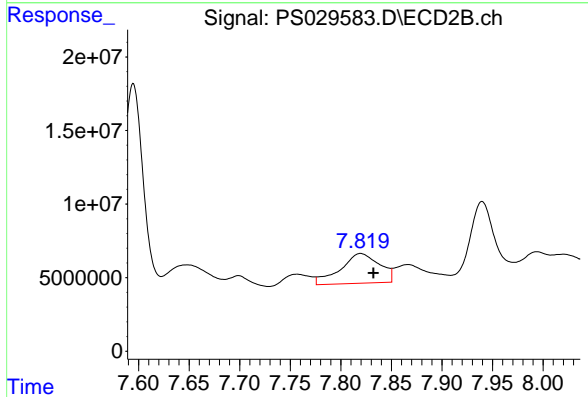
R.T.: 7.699 min
 Delta R.T.: -0.028 min
 Response: 9108039
 Conc: 1.91 ng/ml



#6 MCPP

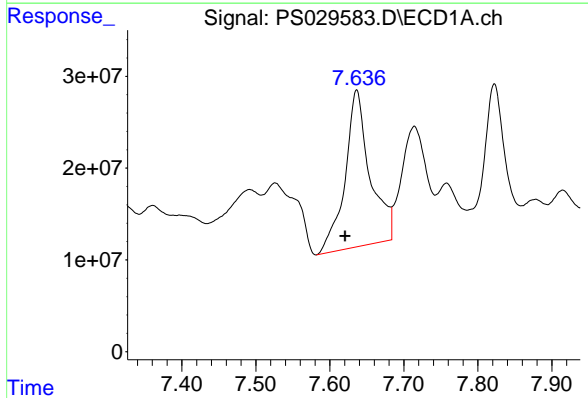
R.T.: 7.492 min
 Delta R.T.: 0.018 min
 Response: 28870703
 Conc: 2.54 ug/ml

Instrument :
 ECD_S
 ClientSampleId :



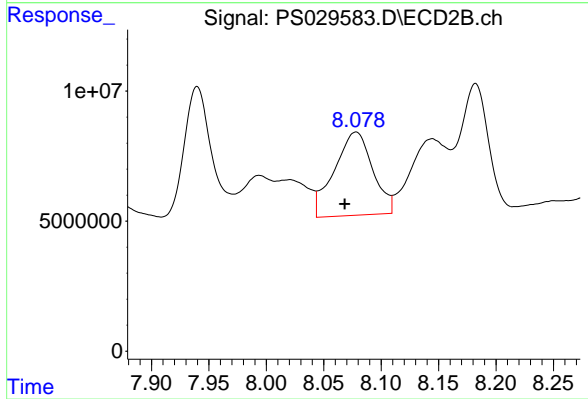
#6 MCPP

R.T.: 7.820 min
 Delta R.T.: -0.013 min
 Response: 54666337
 Conc: 26.40 ug/ml



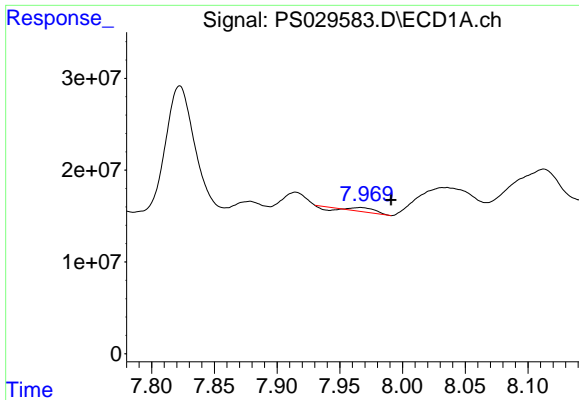
#7 MCPA

R.T.: 7.636 min
 Delta R.T.: 0.016 min
 Response: 399466460
 Conc: 27.78 ug/ml



#7 MCPA

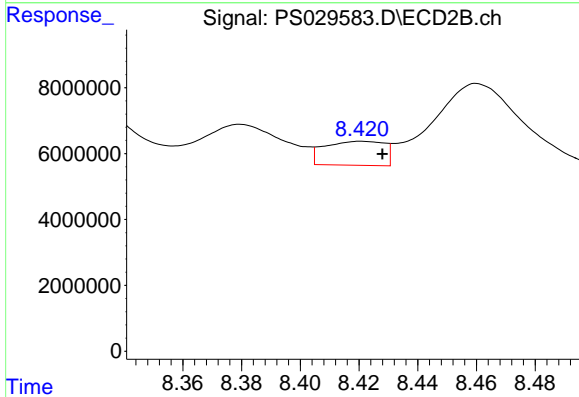
R.T.: 8.078 min
 Delta R.T.: 0.010 min
 Response: 74693262
 Conc: 25.99 ug/ml



#8 DICHLORPROP

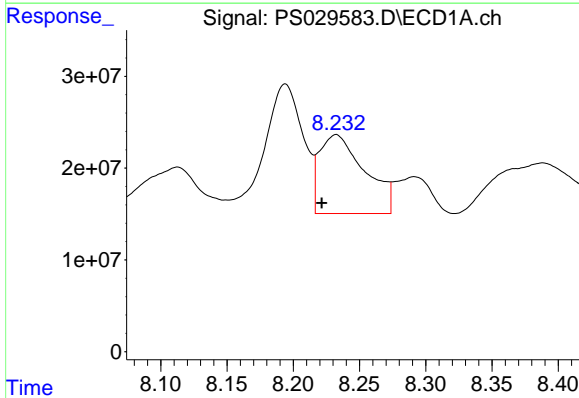
R.T.: 7.966 min
 Delta R.T.: -0.025 min
 Response: 3148201
 Conc: N.D.

Instrument :
 ECD_S
 ClientSampleId :



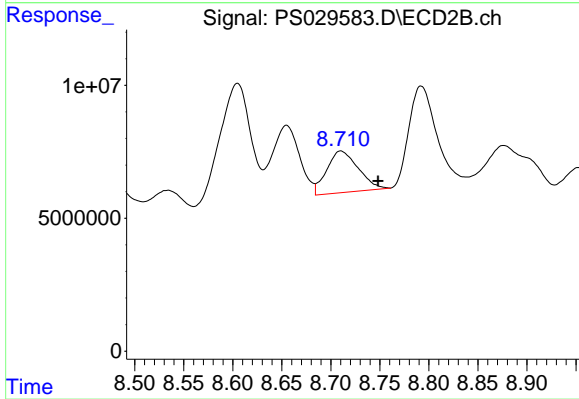
#8 DICHLORPROP

R.T.: 8.421 min
 Delta R.T.: -0.007 min
 Response: 10275427
 Conc: 8.25 ng/ml



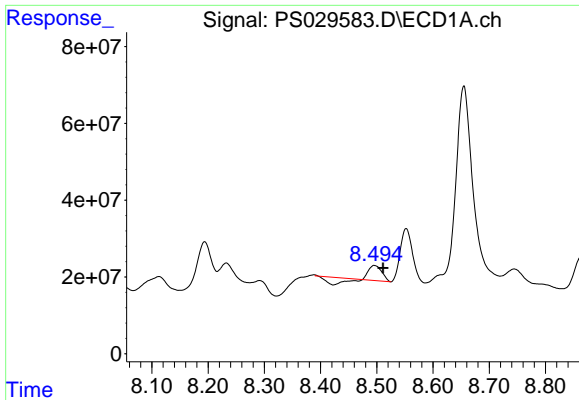
#9 2,4-D

R.T.: 8.232 min
 Delta R.T.: 0.011 min
 Response: 204318033
 Conc: 50.65 ng/ml



#9 2,4-D

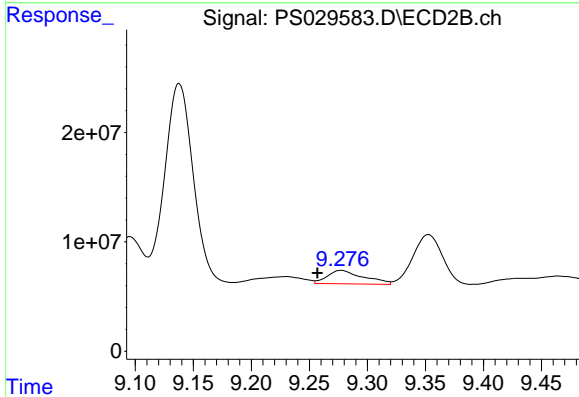
R.T.: 8.710 min
 Delta R.T.: -0.038 min
 Response: 34873140
 Conc: 25.53 ng/ml



#10 Pentachlorophenol

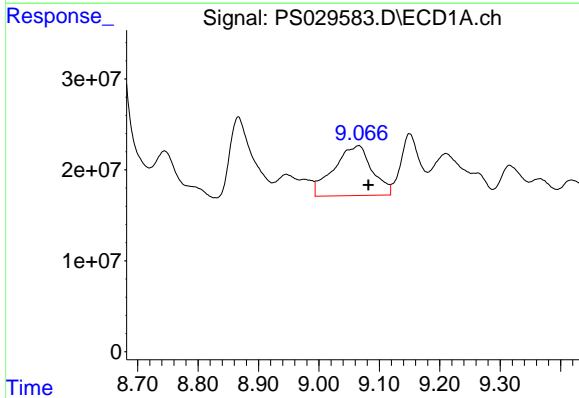
R.T.: 8.496 min
 Delta R.T.: -0.015 min
 Response: 25205169
 Conc: N.D.

Instrument :
 ECD_S
 ClientSampleId :



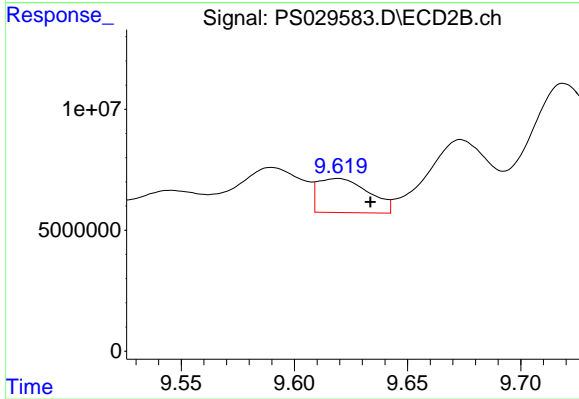
#10 Pentachlorophenol

R.T.: 9.277 min
 Delta R.T.: 0.020 min
 Response: 26634750
 Conc: 1.20 ng/ml



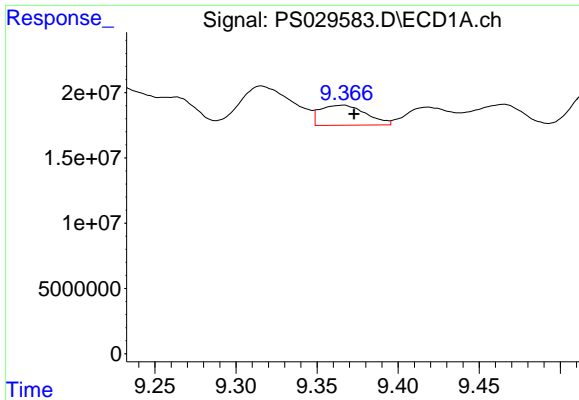
#11 2,4,5-TP (SILVEX)

R.T.: 9.066 min
 Delta R.T.: -0.016 min
 Response: 240841747
 Conc: 10.34 ng/ml



#11 2,4,5-TP (SILVEX)

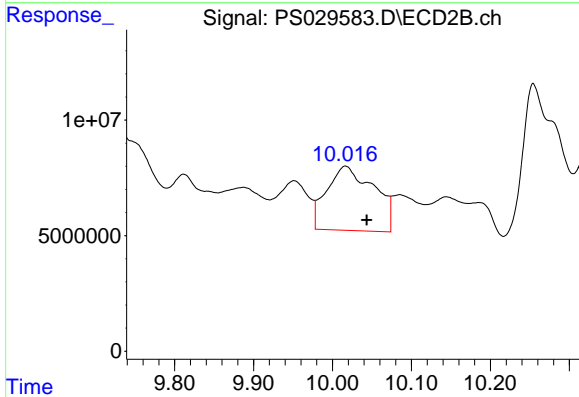
R.T.: 9.619 min
 Delta R.T.: -0.015 min
 Response: 21913727
 Conc: 2.48 ng/ml



#12 2,4,5-T

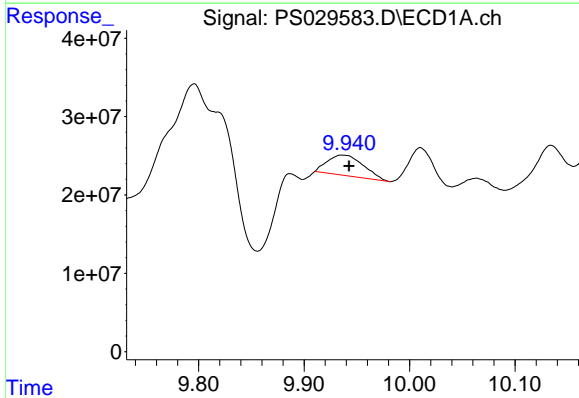
R.T.: 9.365 min
 Delta R.T.: -0.008 min
 Response: 29935204
 Conc: 1.45 ng/ml

Instrument :
 ECD_S
 ClientSampleId :



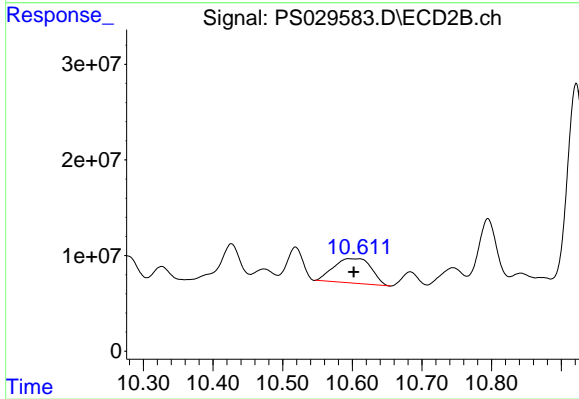
#12 2,4,5-T

R.T.: 10.017 min
 Delta R.T.: -0.027 min
 Response: 115971191
 Conc: 14.55 ng/ml



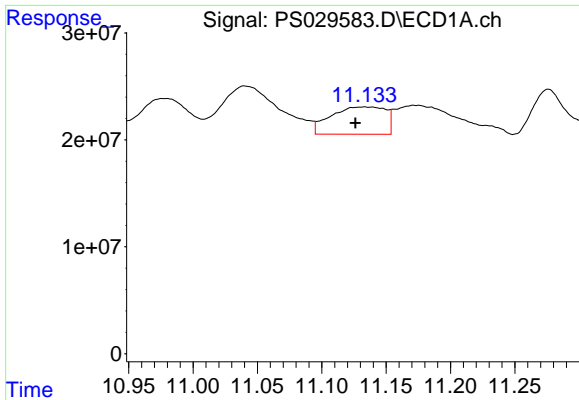
#13 2,4-DB

R.T.: 9.937 min
 Delta R.T.: -0.006 min
 Response: 61265106
 Conc: 32.09 ng/ml



#13 2,4-DB

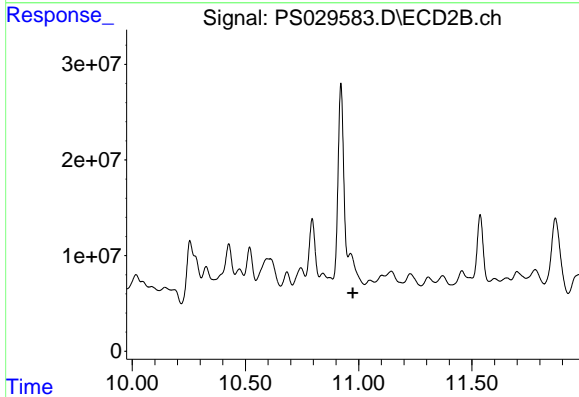
R.T.: 10.596 min
 Delta R.T.: -0.006 min
 Response: 96060112
 Conc: 104.53 ng/ml



#14 DINOSEB

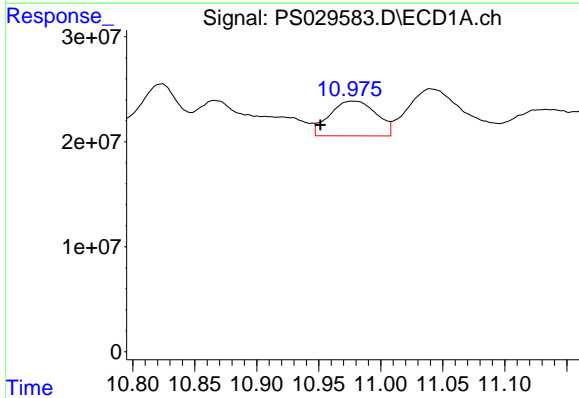
R.T.: 11.134 min
 Delta R.T.: 0.008 min
 Response: 75510808
 Conc: 4.26 ng/ml

Instrument :
 ECD_S
 ClientSampleId :



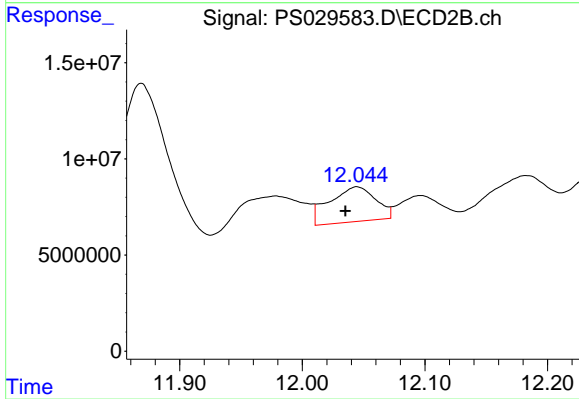
#14 DINOSEB

R.T.: 0.000 min
 Exp R.T. : 10.974 min
 Response: 0
 Conc: N.D.



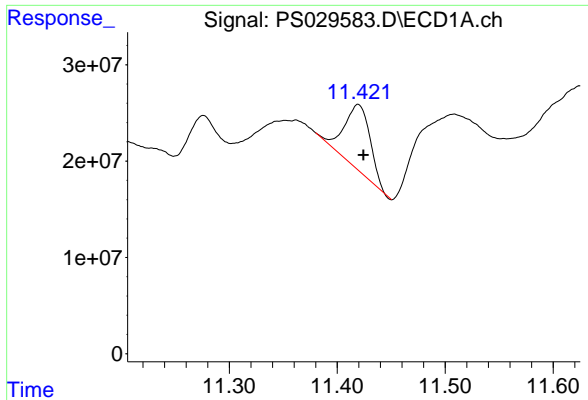
#15 Picloram

R.T.: 10.978 min
 Delta R.T.: 0.027 min
 Response: 86654627
 Conc: 6.02 ng/ml



#15 Picloram

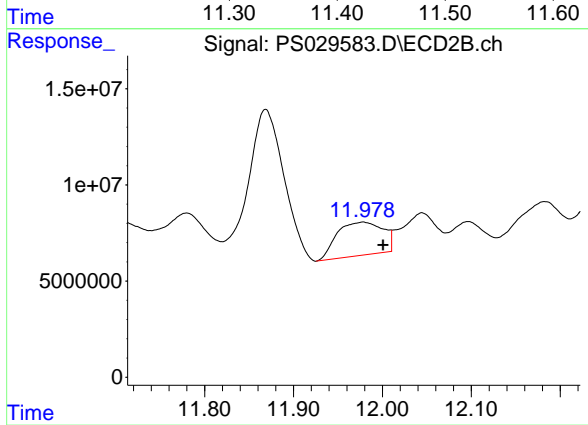
R.T.: 12.045 min
 Delta R.T.: 0.010 min
 Response: 47301496
 Conc: 3.79 ng/ml



#16 DCPA

R.T.: 11.419 min
Delta R.T.: -0.005 min
Response: 111214790
Conc: 3.86 ng/ml

Instrument :
ECD_S
ClientSampleId :



#16 DCPA

R.T.: 11.978 min
Delta R.T.: -0.023 min
Response: 62307894
Conc: 5.56 ng/ml