

Data Path : Z:\pestpcbsrv\HPCHEM1\ECD_S\Data\PS032919\
 Data File : PS003833.D
 Signal(s) : Signal #1: ECD1A.ch Signal #2: ECD2B.ch
 Acq On : 29 Mar 2019 17:56
 Operator : EI\SJ
 Sample : K1697-16
 Misc :
 ALS Vial : 6 Sample Multiplier: 1

Instrument :
 ECD_S
ClientSampleId :
 SU-02-032719-B

Manual Integrations
APPROVED
 Sohil
 3/30/2019 1:11:05 PM

Integration File signal 1: autoint1.e
 Integration File signal 2: autoint2.e
 Quant Time: Mar 30 02:23:27 2019
 Quant Method : Z:\pestpcbsrv\HPCHEM1\ECD_S\Method\PS032619.M
 Quant Title : 8080.M
 QLast Update : Wed Mar 27 05:52:44 2019
 Response via : Initial Calibration
 Integrator: ChemStation

Volume Inj. : 2 µl
 Signal #1 Phase : Rtx-CLPesticides Signal #2 Phase: Rtx-CLPesticides2
 Signal #1 Info : 30M x 0.32mm x0.5 Signal #2 Info : 30M x 0.32mm x 0.25µm

Compound	RT#1	RT#2	Resp#1	Resp#2	ng/ml	ng/ml

System Monitoring Compounds						
4) S 2,4-DCAA	11.289	10.790	199.8E6	196.9E6	458.055	401.292m
Target Compounds						

(f)=RT Delta > 1/2 Window (#)=Amounts differ by > 25% (m)=manual int.

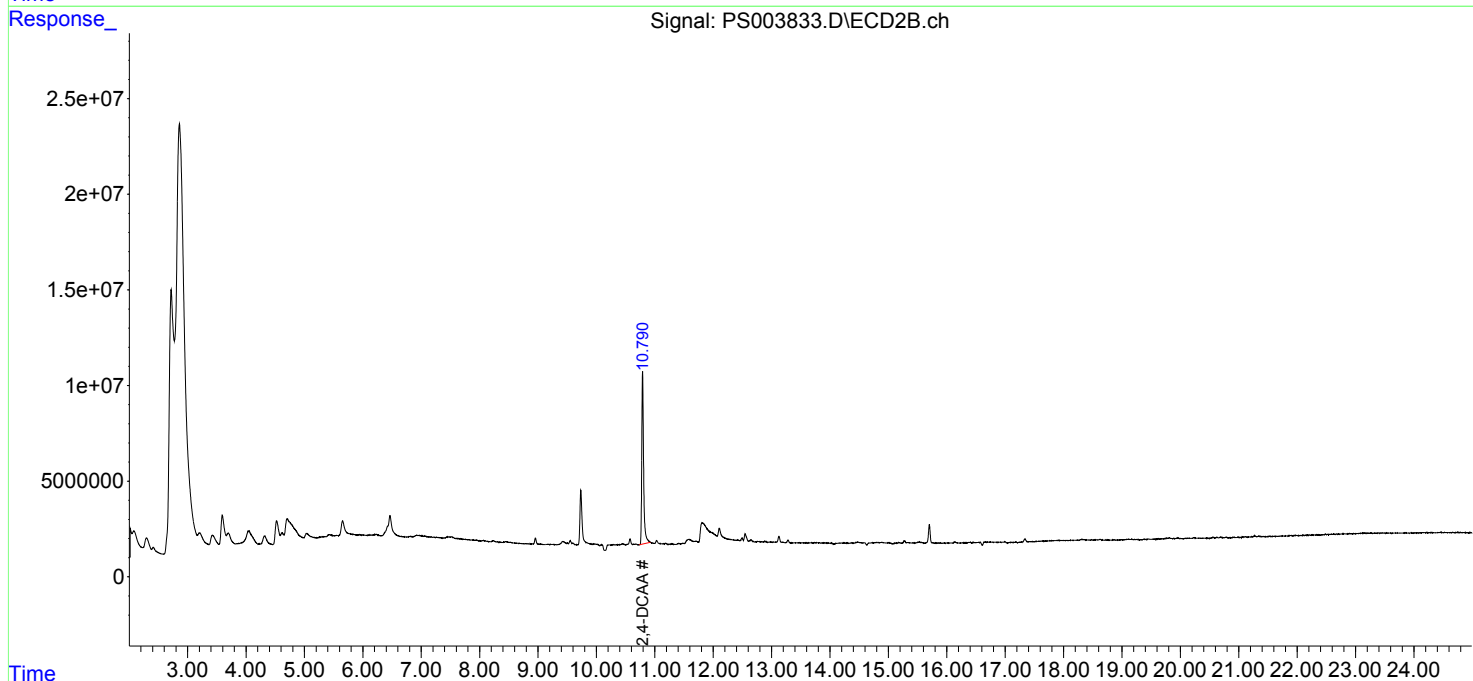
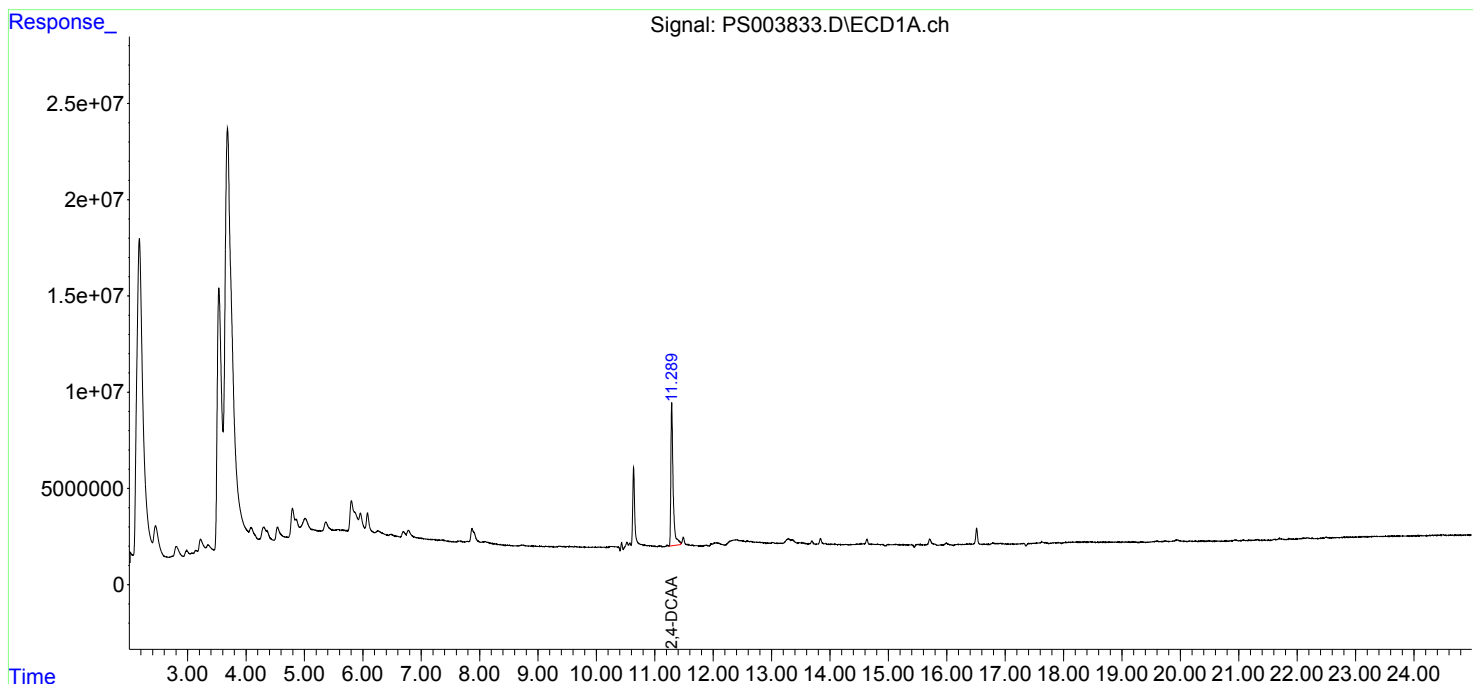
Data Path : Z:\pestpcbsrv\HPCHEM1\ECD_S\Data\PS032919\
 Data File : PS003833.D
 Signal(s) : Signal #1: ECD1A.ch Signal #2: ECD2B.ch
 Acq On : 29 Mar 2019 17:56
 Operator : EI\SJ
 Sample : K1697-16
 Misc :
 ALS Vial : 6 Sample Multiplier: 1

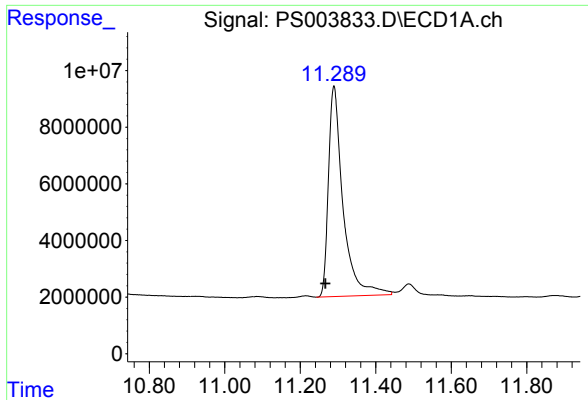
Instrument :
 ECD_S
ClientSampleId :
 SU-02-032719-B

Manual Integrations
APPROVED
 Sohil
 3/30/2019 1:11:05 PM

Integration File signal 1: autoint1.e
 Integration File signal 2: autoint2.e
 Quant Time: Mar 30 02:23:27 2019
 Quant Method : Z:\pestpcbsrv\HPCHEM1\ECD_S\Method\PS032619.M
 Quant Title : 8080.M
 QLast Update : Wed Mar 27 05:52:44 2019
 Response via : Initial Calibration
 Integrator: ChemStation

Volume Inj. : 2 µl
 Signal #1 Phase : Rtx-CLPesticides Signal #2 Phase: Rtx-CLPesticides2
 Signal #1 Info : 30M x 0.32mm x0.5 Signal #2 Info : 30M x 0.32mm x 0.25µm





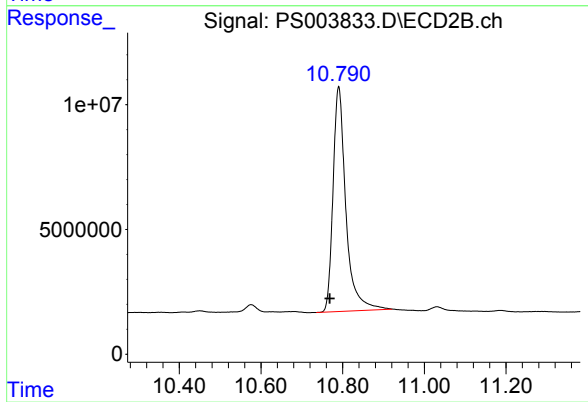
#4 2,4-DCAA

R.T.: 11.289 min
Delta R.T.: 0.023 min
Response: 199809229
Conc: 458.05 ng/ml

Instrument :
ECD_S
ClientSampled :
SU-02-032719-B

Manual Integrations
APPROVED

Sohil
3/30/2019 1:11:05 PM



#4 2,4-DCAA

R.T.: 10.790 min
Delta R.T.: 0.021 min
Response: 196897195
Conc: 401.29 ng/ml m