

Data Path : Z:\pestpcbsrv\HPCHEM1\ECD_S\Data\PS032923\
 Data File : PS022546.D
 Signal(s) : Signal #1: ECD1A.ch Signal #2: ECD2B.ch
 Acq On : 29 Mar 2023 16:12
 Operator : AR\AJ
 Sample : 02102-02MS
 Misc :
 ALS Vial : 7 Sample Multiplier: 1

Instrument :
 ECD_S
 ClientSampleId :

Integration File signal 1: autoint1.e
 Integration File signal 2: autoint2.e
 Quant Time: Mar 29 22:02:34 2023
 Quant Method : Z:\pestpcbsrv\HPCHEM1\ECD_S\Method\PS032023.M
 Quant Title : 8080.M
 QLast Update : Mon Mar 20 15:46:44 2023
 Response via : Initial Calibration
 Integrator: ChemStation

Volume Inj. : 2 µl
 Signal #1 Phase : Rtx-CLPesticides Signal #2 Phase: Rtx-CLPesticides2
 Signal #1 Info : 30M x 0.32mm x0.5 Signal #2 Info : 30M x 0.32mm x 0.25µm

	Compound	RT#1	RT#2	Resp#1	Resp#2	ng/ml	ng/ml

System Monitoring Compounds							
4) S	2,4-DCAA	6.296	6.718	1357.3E6	1198.7E6	555.261	581.971
Target Compounds							
1) T	Dalapon	2.409	2.482	980.7E6	1846.5E6	314.482	565.816 #
2) T	3,5-DICHL...	5.677	5.920	1655.9E6	1486.7E6	444.738	466.193
3) T	4-Nitroph...	6.110	6.366	20536355	19052391	14.988	13.570
5) T	DICAMBA	6.432	6.876	4386.9E6	4285.9E6	426.729	434.459
6) T	MCP P	6.581	6.972	353.0E6	360.5E6	46.436	46.315
7) T	MCPA	6.702	7.181	417.5E6	455.7E6	40.001	43.372
8) T	DICHLORPROP	7.015	7.496	1174.0E6	1381.6E6	442.984	554.864 #
9) T	2,4-D	7.217	7.785	1466.2E6	1492.8E6	447.146	504.582
10) T	Pentachlo...	7.436	8.203	17886.3E6	16946.0E6	508.347	516.263
11) T	2,4,5-TP ...	7.962	8.566	7345.1E6	6716.9E6	491.390	493.099
12) T	2,4,5-T	8.221	8.942	7522.6E6	6268.0E6	458.104	498.261
13) T	2,4-DB	8.728	9.447	1028.8E6	614.9E6	341.192	366.150
14) T	DINOSEB	9.768	9.769	5839.0E6	4499.1E6	450.552	469.085
15) T	Picloram	9.616	10.743	9407.3E6	8137.7E6	379.002	405.526
16) T	DCPA	10.036	10.693	10144.4E6	7800.6E6	491.817	491.771

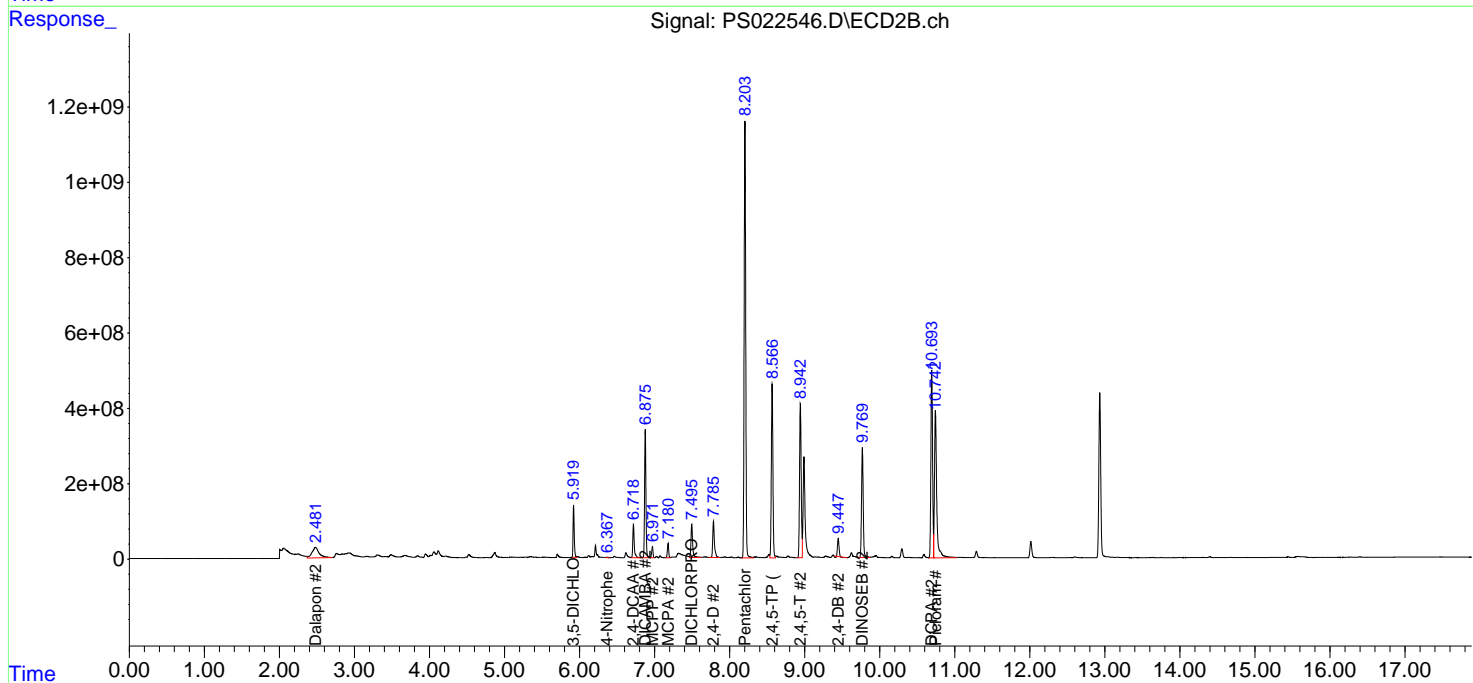
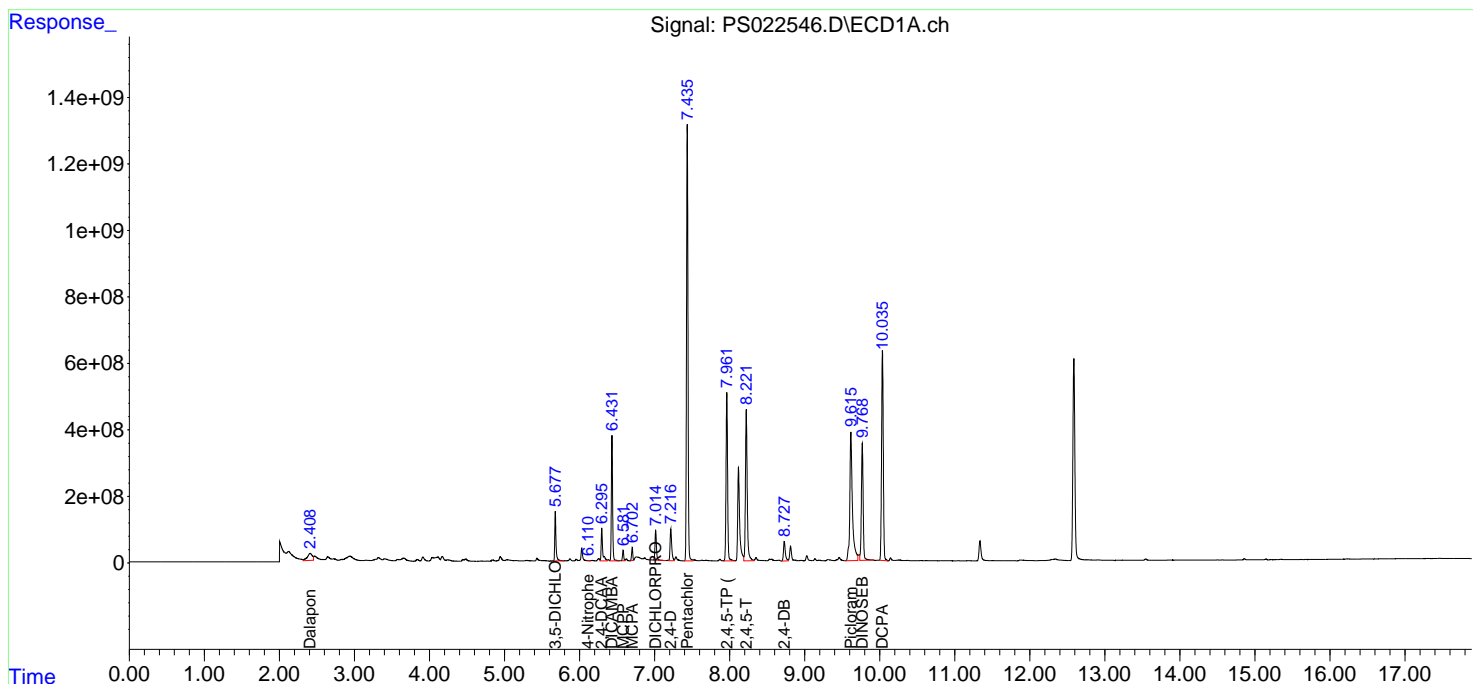
(f)=RT Delta > 1/2 Window (#)=Amounts differ by > 25% (m)=manual int.

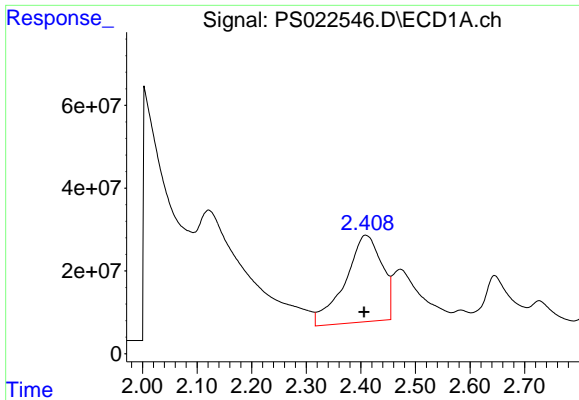
Data Path : Z:\pestpcbsrv\HPCHEM1\ECD_S\Data\PS032923\
 Data File : PS022546.D
 Signal(s) : Signal #1: ECD1A.ch Signal #2: ECD2B.ch
 Acq On : 29 Mar 2023 16:12
 Operator : AR\AJ
 Sample : 02102-02MS
 Misc :
 ALS Vial : 7 Sample Multiplier: 1

Instrument :
 ECD_S
 ClientSampleId :

Integration File signal 1: autoint1.e
 Integration File signal 2: autoint2.e
 Quant Time: Mar 29 22:02:34 2023
 Quant Method : Z:\pestpcbsrv\HPCHEM1\ECD_S\Method\PS032023.M
 Quant Title : 8080.M
 QLast Update : Mon Mar 20 15:46:44 2023
 Response via : Initial Calibration
 Integrator: ChemStation

Volume Inj. : 2 µl
 Signal #1 Phase : Rtx-CLPesticides Signal #2 Phase: Rtx-CLPesticides2
 Signal #1 Info : 30M x 0.32mm x0.5 Signal #2 Info : 30M x 0.32mm x 0.25µm

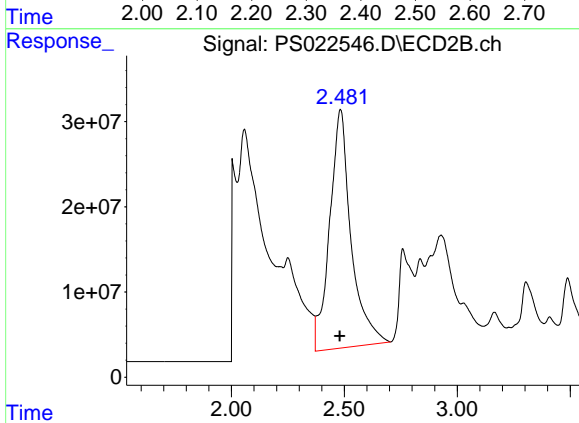




#1 Dalapon

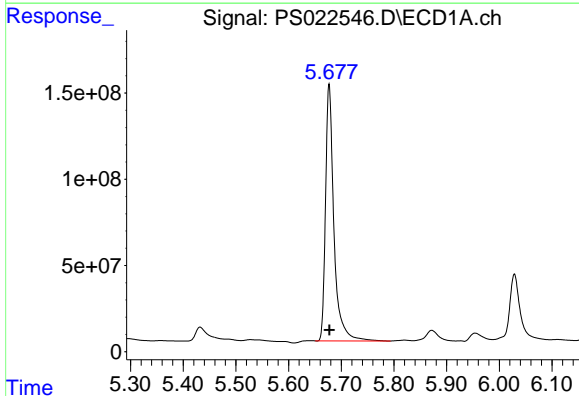
R.T.: 2.409 min
 Delta R.T.: 0.003 min
 Response: 980744884
 Conc: 314.48 ng/ml

Instrument :
 ECD_S
 ClientSampleId :



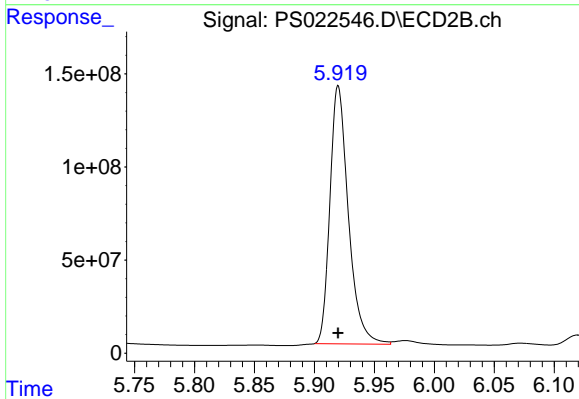
#1 Dalapon

R.T.: 2.482 min
 Delta R.T.: 0.002 min
 Response: 1846547831
 Conc: 565.82 ng/ml



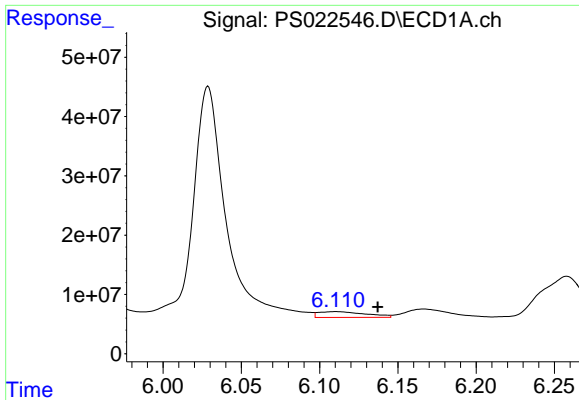
#2 3,5-DICHLOROBENZOIC ACID

R.T.: 5.677 min
 Delta R.T.: 0.000 min
 Response: 1655902226
 Conc: 444.74 ng/ml



#2 3,5-DICHLOROBENZOIC ACID

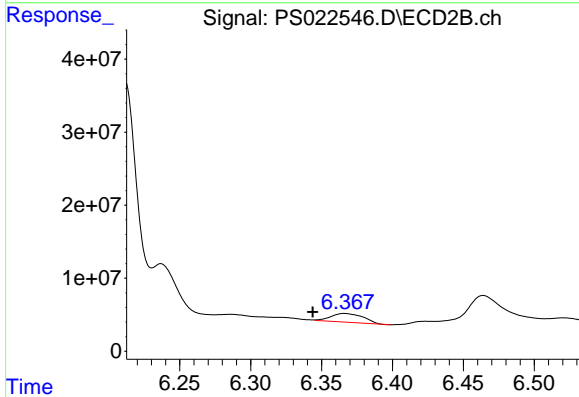
R.T.: 5.920 min
 Delta R.T.: 0.000 min
 Response: 1486668454
 Conc: 466.19 ng/ml



#3 4-Nitrophenol

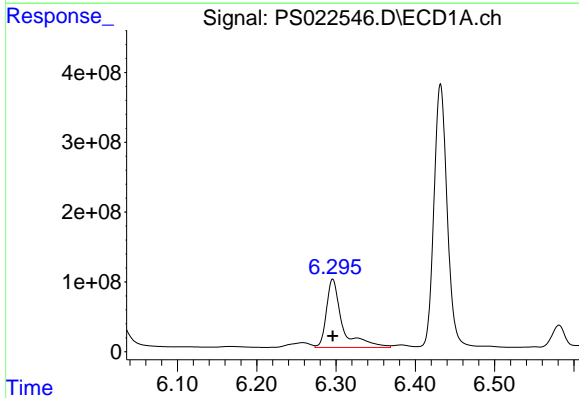
R.T.: 6.110 min
 Delta R.T.: -0.027 min
 Response: 20536355
 Conc: 14.99 ng/ml

Instrument :
 ECD_S
 ClientSampleId :



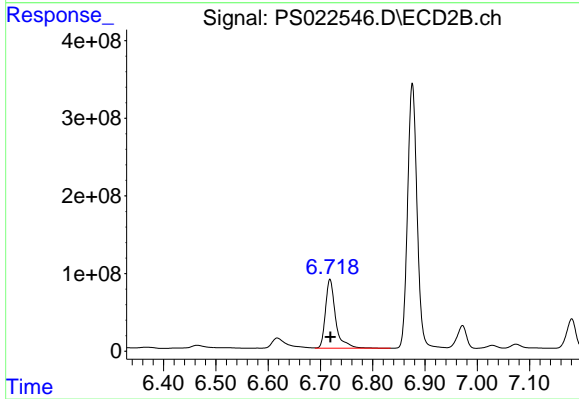
#3 4-Nitrophenol

R.T.: 6.366 min
 Delta R.T.: 0.022 min
 Response: 19052391
 Conc: 13.57 ng/ml



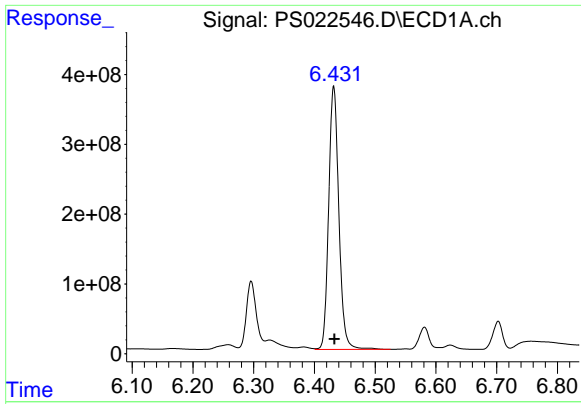
#4 2,4-DCAA

R.T.: 6.296 min
 Delta R.T.: 0.000 min
 Response: 1357270963
 Conc: 555.26 ng/ml



#4 2,4-DCAA

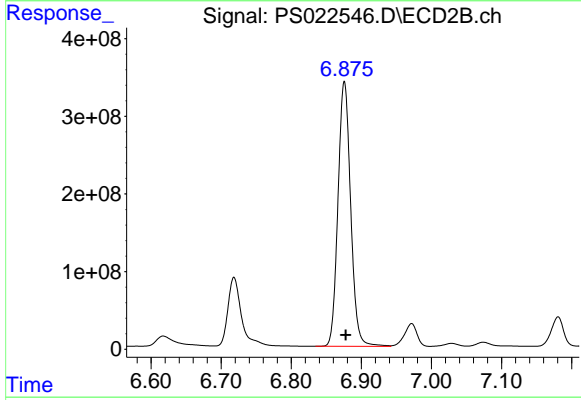
R.T.: 6.718 min
 Delta R.T.: -0.001 min
 Response: 1198677770
 Conc: 581.97 ng/ml



#5 DICAMBA

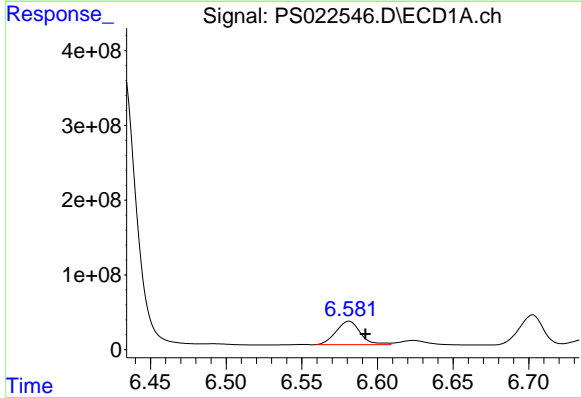
R.T.: 6.432 min
 Delta R.T.: -0.001 min
 Response: 4386888472
 Conc: 426.73 ng/ml

Instrument :
 ECD_S
 ClientSampleId :



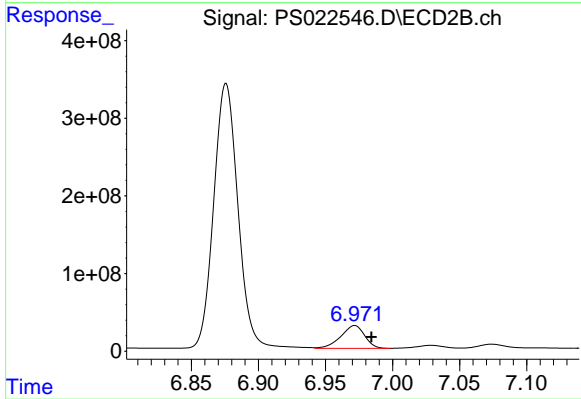
#5 DICAMBA

R.T.: 6.876 min
 Delta R.T.: -0.002 min
 Response: 4285927271
 Conc: 434.46 ng/ml



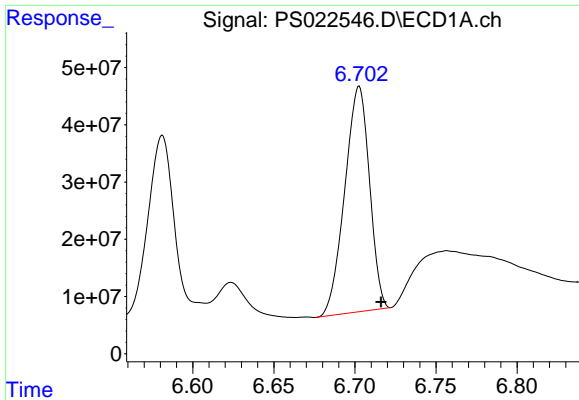
#6 MCP

R.T.: 6.581 min
 Delta R.T.: -0.011 min
 Response: 353019161
 Conc: 46.44 ug/ml



#6 MCP

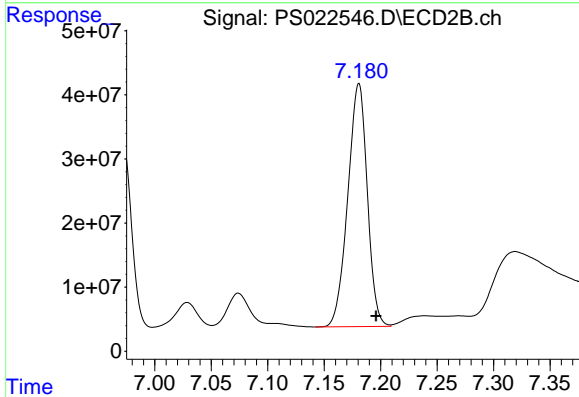
R.T.: 6.972 min
 Delta R.T.: -0.012 min
 Response: 360527329
 Conc: 46.31 ug/ml



#7 MCPA

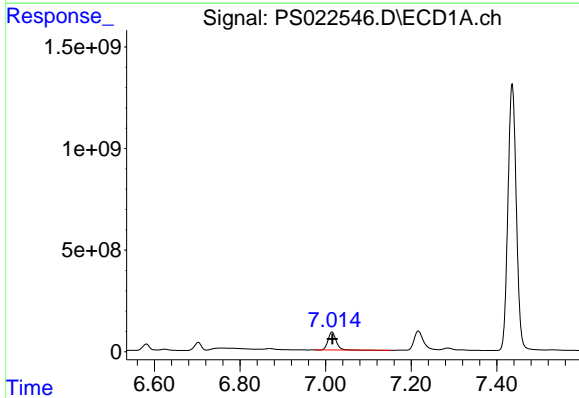
R.T.: 6.702 min
 Delta R.T.: -0.014 min
 Response: 417492204
 Conc: 40.00 ug/ml

Instrument :
 ECD_S
 ClientSampleId :



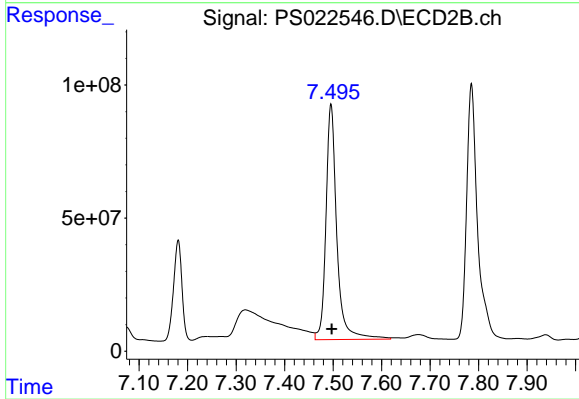
#7 MCPA

R.T.: 7.181 min
 Delta R.T.: -0.015 min
 Response: 455673706
 Conc: 43.37 ug/ml



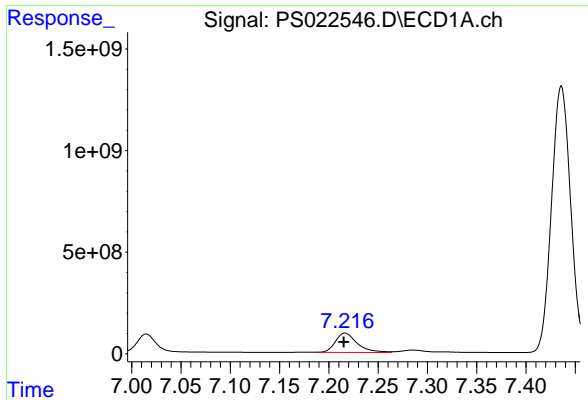
#8 DICHLORPROP

R.T.: 7.015 min
 Delta R.T.: 0.000 min
 Response: 1174032751
 Conc: 442.98 ng/ml



#8 DICHLORPROP

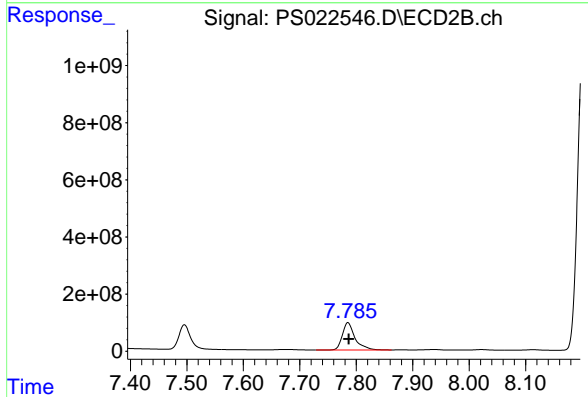
R.T.: 7.496 min
 Delta R.T.: -0.001 min
 Response: 1381624187
 Conc: 554.86 ng/ml



#9 2,4-D

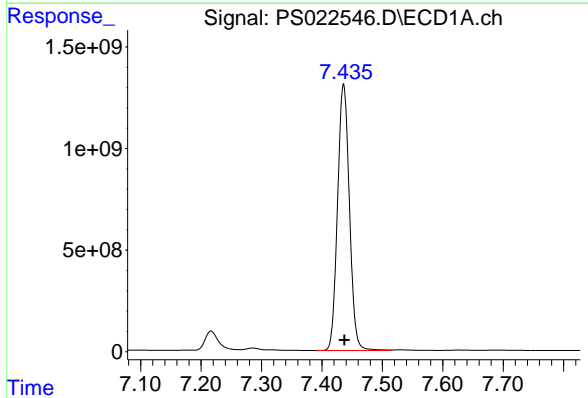
R.T.: 7.217 min
 Delta R.T.: 0.001 min
 Response: 1466196452
 Conc: 447.15 ng/ml

Instrument :
 ECD_S
 ClientSampleId :



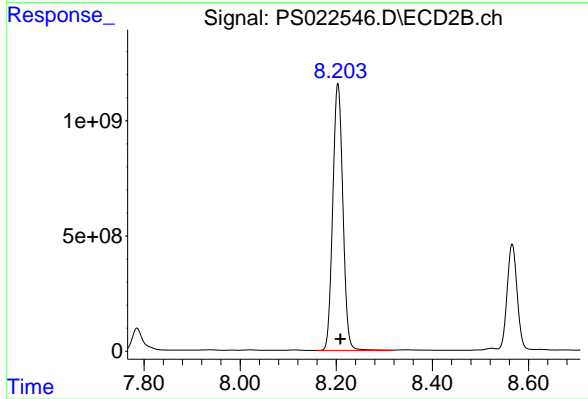
#9 2,4-D

R.T.: 7.785 min
 Delta R.T.: -0.001 min
 Response: 1492797466
 Conc: 504.58 ng/ml



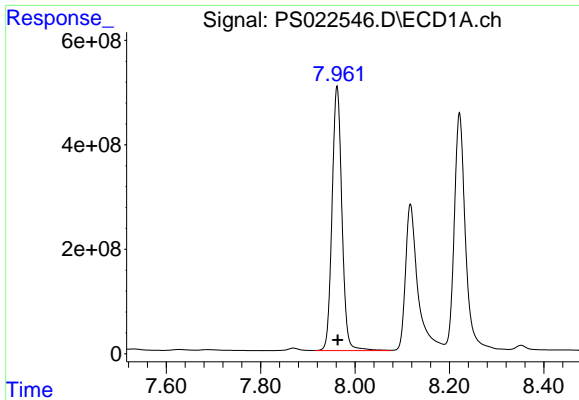
#10 Pentachlorophenol

R.T.: 7.436 min
 Delta R.T.: -0.001 min
 Response: 17886261879
 Conc: 508.35 ng/ml



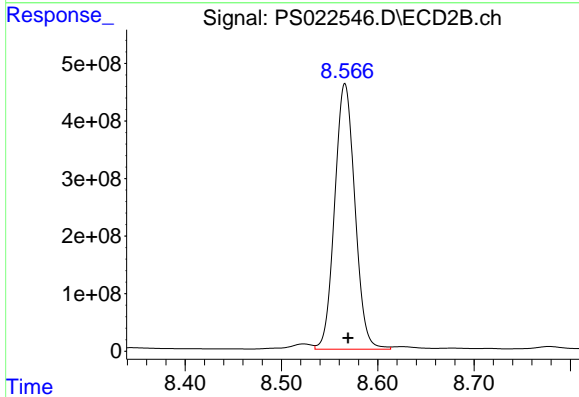
#10 Pentachlorophenol

R.T.: 8.203 min
 Delta R.T.: -0.005 min
 Response: 16945956317
 Conc: 516.26 ng/ml

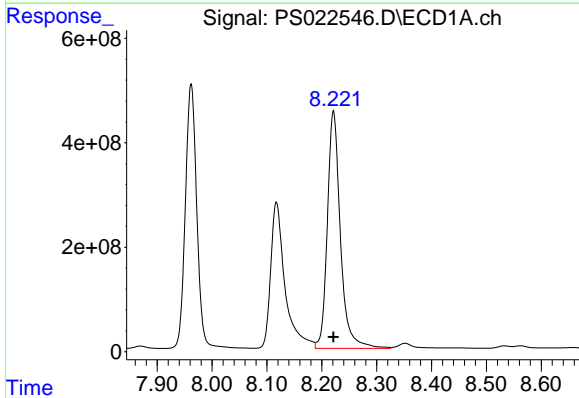


#11 2,4,5-TP (SILVEX)
 R.T.: 7.962 min
 Delta R.T.: -0.001 min
 Response: 7345060159
 Conc: 491.39 ng/ml

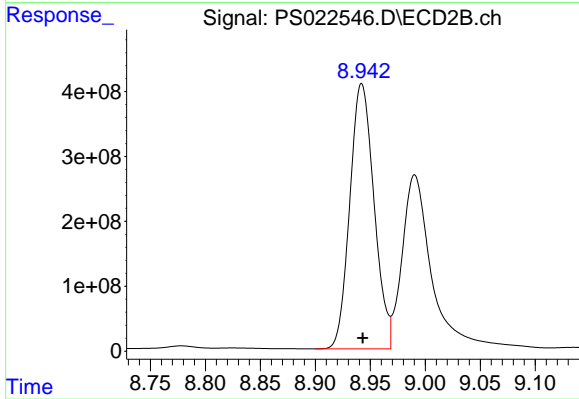
Instrument :
 ECD_S
 ClientSampleId :



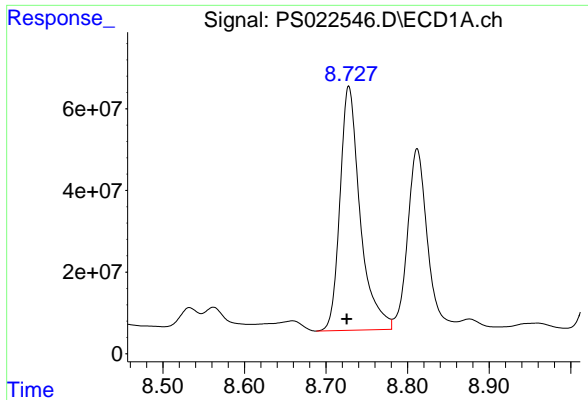
#11 2,4,5-TP (SILVEX)
 R.T.: 8.566 min
 Delta R.T.: -0.003 min
 Response: 6716935323
 Conc: 493.10 ng/ml



#12 2,4,5-T
 R.T.: 8.221 min
 Delta R.T.: 0.000 min
 Response: 7522610081
 Conc: 458.10 ng/ml



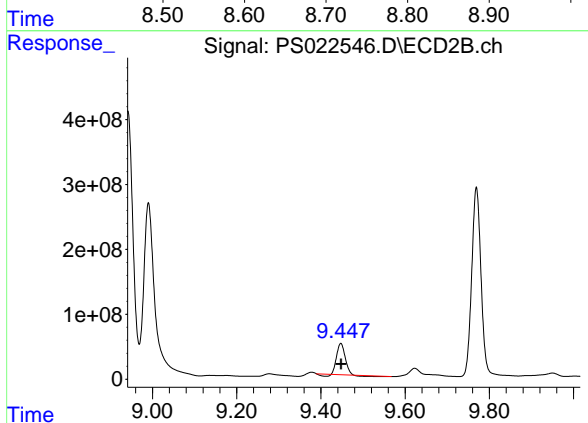
#12 2,4,5-T
 R.T.: 8.942 min
 Delta R.T.: -0.001 min
 Response: 6268039523
 Conc: 498.26 ng/ml



#13 2,4-DB

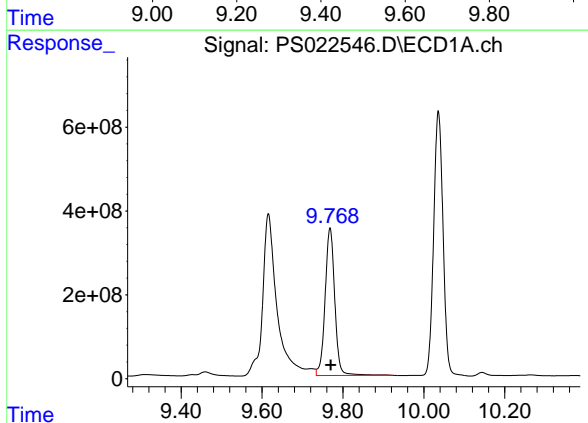
R.T.: 8.728 min
 Delta R.T.: 0.003 min
 Response: 1028794868
 Conc: 341.19 ng/ml

Instrument :
 ECD_S
 ClientSampleId :



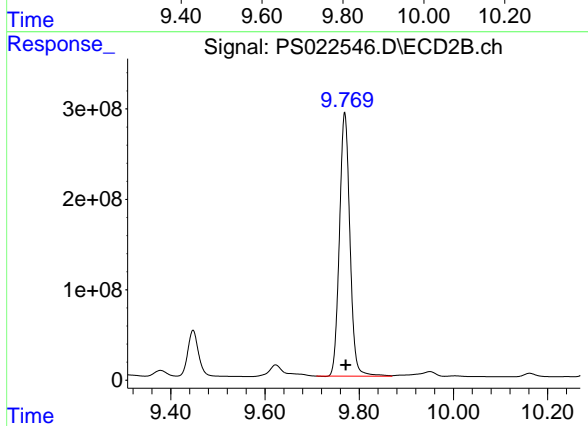
#13 2,4-DB

R.T.: 9.447 min
 Delta R.T.: 0.000 min
 Response: 614875385
 Conc: 366.15 ng/ml



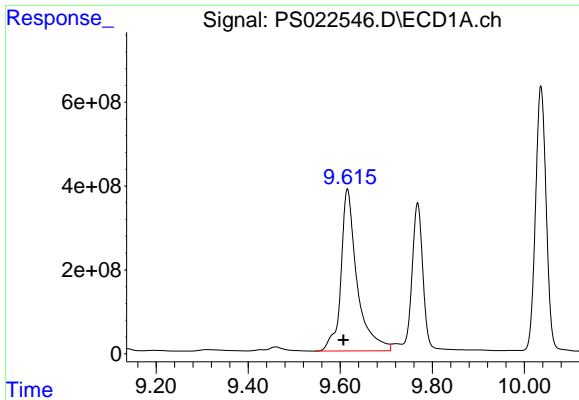
#14 DINOSEB

R.T.: 9.768 min
 Delta R.T.: -0.002 min
 Response: 5839044758
 Conc: 450.55 ng/ml



#14 DINOSEB

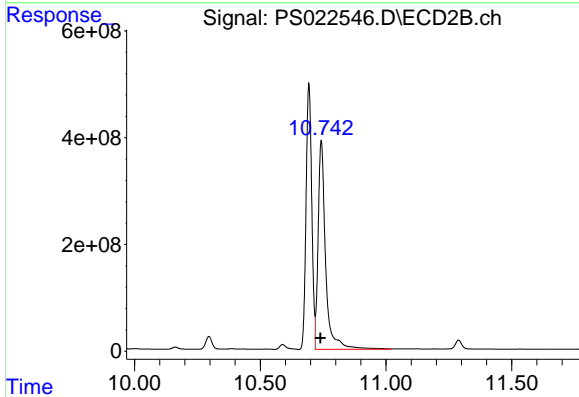
R.T.: 9.769 min
 Delta R.T.: -0.002 min
 Response: 4499084352
 Conc: 469.09 ng/ml



#15 Picloram

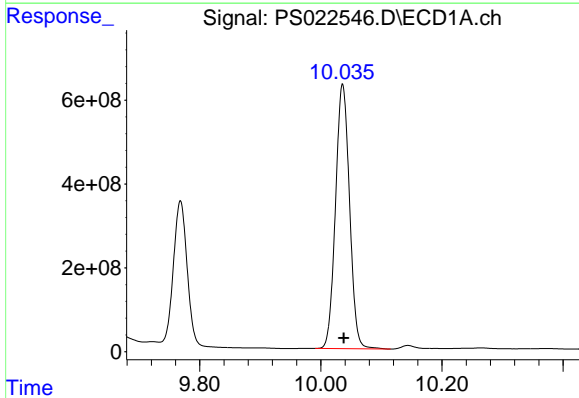
R.T.: 9.616 min
 Delta R.T.: 0.009 min
 Response: 9407326767
 Conc: 379.00 ng/ml

Instrument :
 ECD_S
 ClientSampleId :



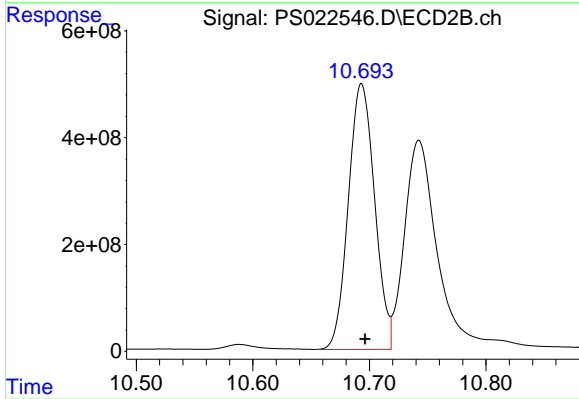
#15 Picloram

R.T.: 10.743 min
 Delta R.T.: 0.003 min
 Response: 8137705476
 Conc: 405.53 ng/ml



#16 DCPA

R.T.: 10.036 min
 Delta R.T.: -0.002 min
 Response: 10144372278
 Conc: 491.82 ng/ml



#16 DCPA

R.T.: 10.693 min
 Delta R.T.: -0.003 min
 Response: 7800600310
 Conc: 491.77 ng/ml