

Data Path : Z:\pestpcbsrv\HPCHEM1\ECD\_S\Data\PS040225\  
 Data File : PS029656.D  
 Signal(s) : Signal #1: ECD1A.ch Signal #2: ECD2B.ch  
 Acq On : 02 Apr 2025 16:44  
 Operator : AR\AJ  
 Sample : I.BLK  
 Misc :  
 ALS Vial : 2 Sample Multiplier: 1

Instrument :  
 ECD\_S  
 ClientSampleId :

Integration File signal 1: autoint1.e  
 Integration File signal 2: autoint2.e  
 Quant Time: Apr 02 22:36:25 2025  
 Quant Method : Z:\pestpcbsrv\HPCHEM1\ECD\_S\Method\PS040225.M  
 Quant Title : 8080.M  
 QLast Update : Wed Apr 02 21:58:31 2025  
 Response via : Initial Calibration  
 Integrator: ChemStation

Volume Inj. : 1 µl  
 Signal #1 Phase : ZB-MR2 Signal #2 Phase: ZB-MR2  
 Signal #1 Info : 30M x 0.32mm x0.5 Signal #2 Info : 30M x 0.32mm x 0.25µm

Compound	RT#1	RT#2	Resp#1	Resp#2	ng/ml	ng/ml
-----						
System Monitoring Compounds						
4) S 2,4-DCAA	6.963	7.475	971.0E6	330.4E6	476.239	484.848
Target Compounds						
1) T Dalapon	2.459	0.000	13765625	0	4.058	N.D. #
2) T 3,5-DICHL...	6.159	0.000	2493912	0	<MDL	N.D. #
3) T 4-Nitroph...	6.761	0.000	5978611	0	4.256	N.D. #
5) T DICAMBA	7.144	0.000	294911	0	<MDL	N.D. #
6) T MCPP	7.363f	0.000	2119339	0	<MDL	N.D. #
7) T MCPA	0.000	8.009	0	4457005	N.D.	1.959
8) T DICHLORPROP	7.824	0.000	1213771	0	<MDL	N.D. #
9) T 2,4-D	8.049	0.000	2627215	0	1.090	N.D. #
10) T Pentachlo...	8.326	0.000	2096554	0	<MDL	N.D. #
11) T 2,4,5-TP ...	8.887	0.000	435198	0	<MDL	N.D. #
12) T 2,4,5-T	9.166	10.006f	806991	2614348	<MDL	<MDL #
13) T 2,4-DB	0.000	10.528	0	2144430	N.D.	2.890
14) T DINOSEB	10.884	0.000	3180209	0	<MDL	N.D. #
15) T Picloram	10.716	11.936	15393824	6899069	<MDL	<MDL #
16) T DCPA	11.196	11.936	260676	6899069	<MDL	<MDL #

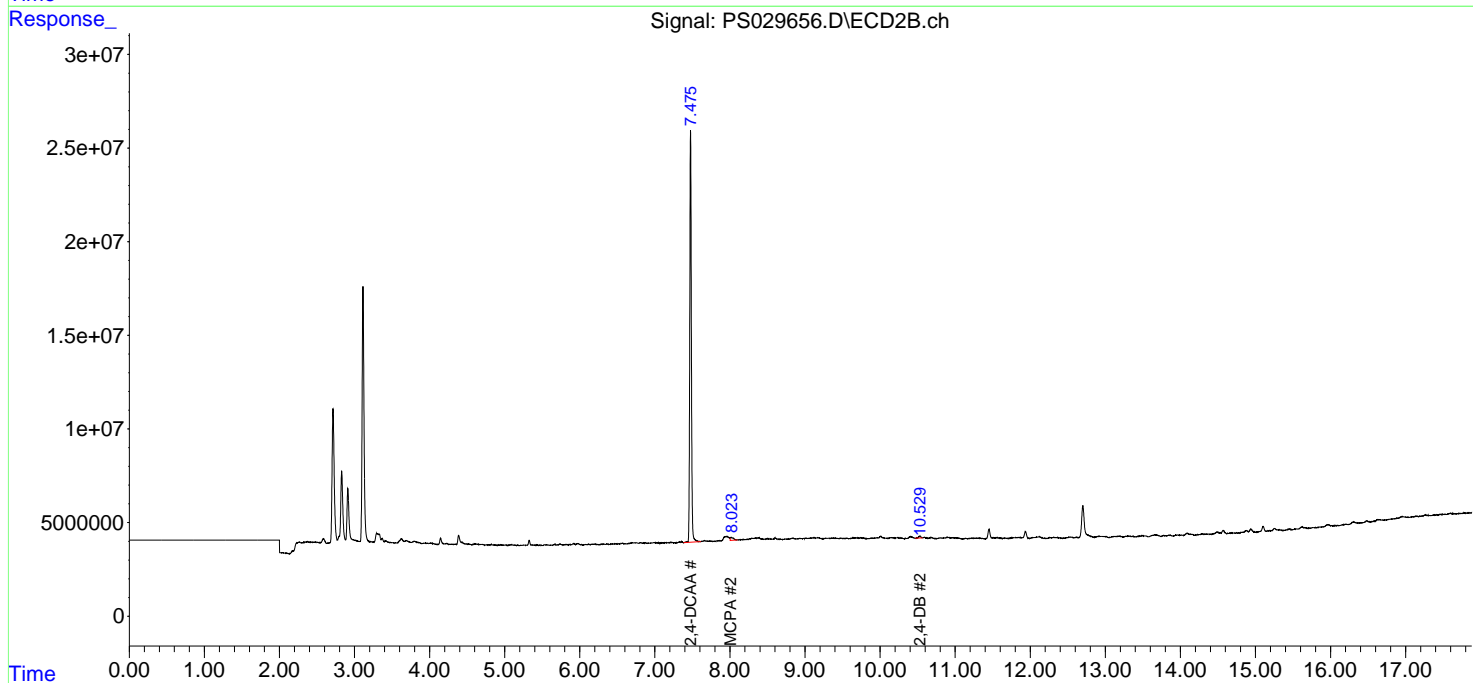
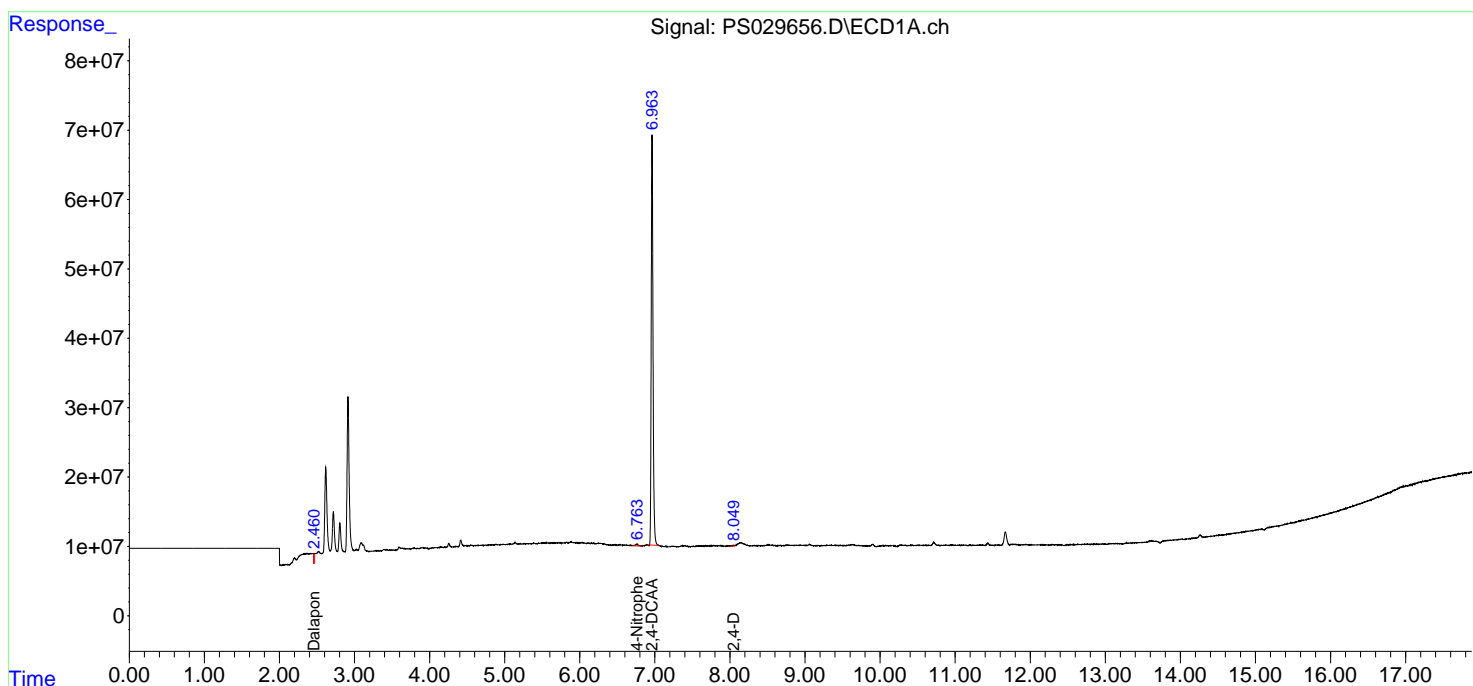
(f)=RT Delta > 1/2 Window (#)=Amounts differ by > 25% (m)=manual int.

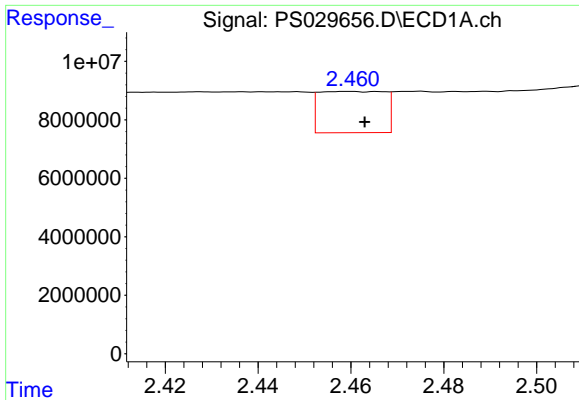
Data Path : Z:\pestpcbsrv\HPCHEM1\ECD\_S\Data\PS040225\  
 Data File : PS029656.D  
 Signal(s) : Signal #1: ECD1A.ch Signal #2: ECD2B.ch  
 Acq On : 02 Apr 2025 16:44  
 Operator : AR\AJ  
 Sample : I.BLK  
 Misc :  
 ALS Vial : 2 Sample Multiplier: 1

Instrument :  
 ECD\_S  
 ClientSampleId :

Integration File signal 1: autoint1.e  
 Integration File signal 2: autoint2.e  
 Quant Time: Apr 02 22:36:25 2025  
 Quant Method : Z:\pestpcbsrv\HPCHEM1\ECD\_S\Method\PS040225.M  
 Quant Title : 8080.M  
 QLast Update : Wed Apr 02 21:58:31 2025  
 Response via : Initial Calibration  
 Integrator: ChemStation

Volume Inj. : 1 µl  
 Signal #1 Phase : ZB-MR1 Signal #2 Phase: ZB-MR2  
 Signal #1 Info : 30M x 0.32mm x0.5 Signal #2 Info : 30M x 0.32mm x 0.25µm

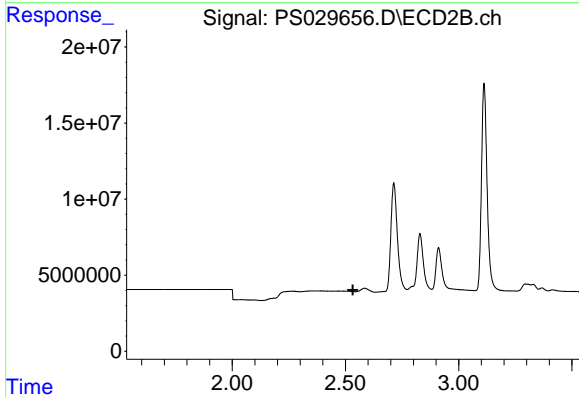




#1 Dalapon

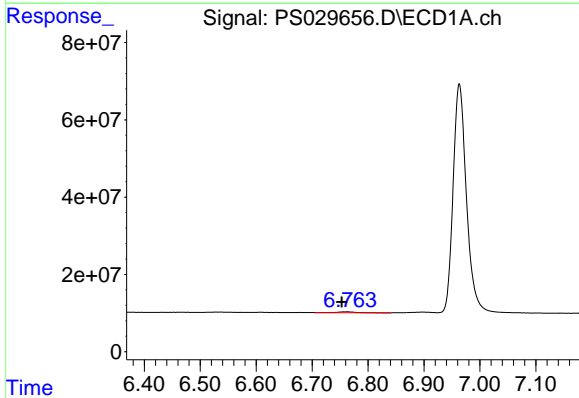
R.T.: 2.459 min  
 Delta R.T.: -0.004 min  
 Response: 13765625  
 Conc: 4.06 ng/ml

Instrument :  
 ECD\_S  
 ClientSampleId :



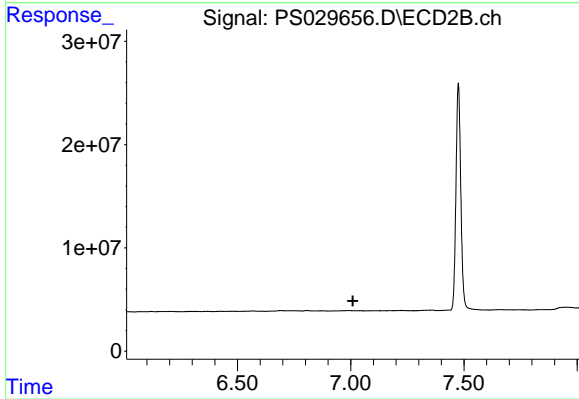
#1 Dalapon

R.T.: 0.000 min  
 Exp R.T. : 2.533 min  
 Response: 0  
 Conc: N.D.



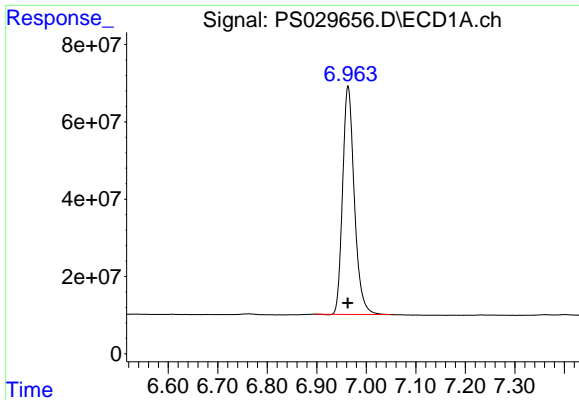
#3 4-Nitrophenol

R.T.: 6.761 min  
 Delta R.T.: 0.008 min  
 Response: 5978611  
 Conc: 4.26 ng/ml



#3 4-Nitrophenol

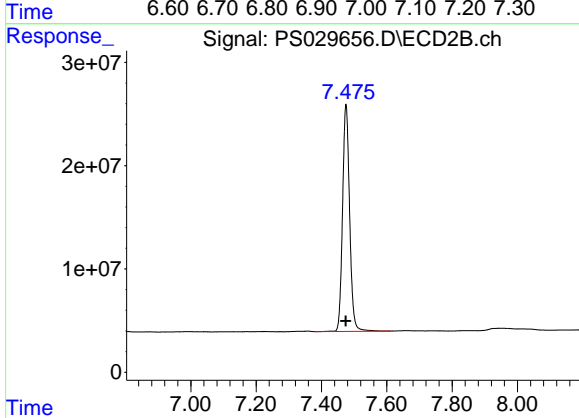
R.T.: 0.000 min  
 Exp R.T. : 7.009 min  
 Response: 0  
 Conc: N.D.



#4 2,4-DCAA

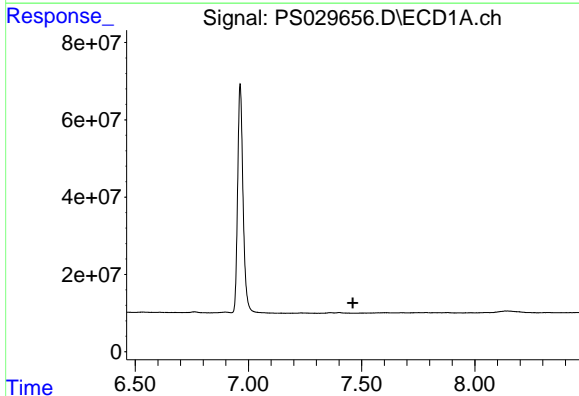
R.T.: 6.963 min  
 Delta R.T.: 0.000 min  
 Response: 970970961  
 Conc: 476.24 ng/ml

Instrument :  
 ECD\_S  
 ClientSampleId :



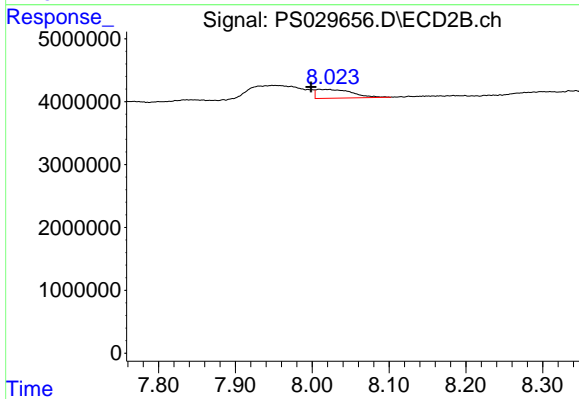
#4 2,4-DCAA

R.T.: 7.475 min  
 Delta R.T.: 0.000 min  
 Response: 330430379  
 Conc: 484.85 ng/ml



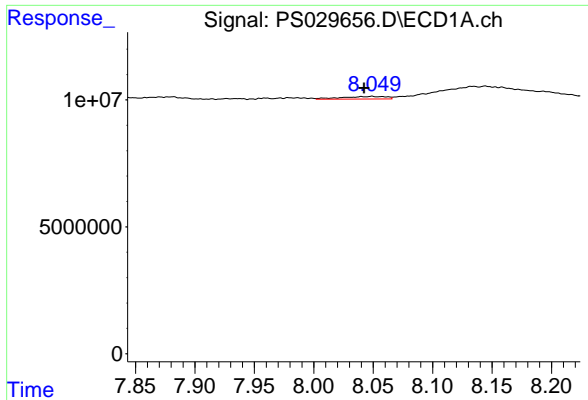
#7 MCPA

R.T.: 0.000 min  
 Exp R.T. : 7.461 min  
 Response: 0  
 Conc: N.D.



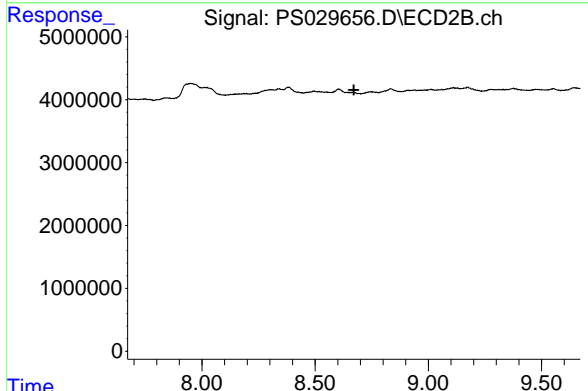
#7 MCPA

R.T.: 8.009 min  
 Delta R.T.: 0.011 min  
 Response: 4457005  
 Conc: 1.96 ug/ml

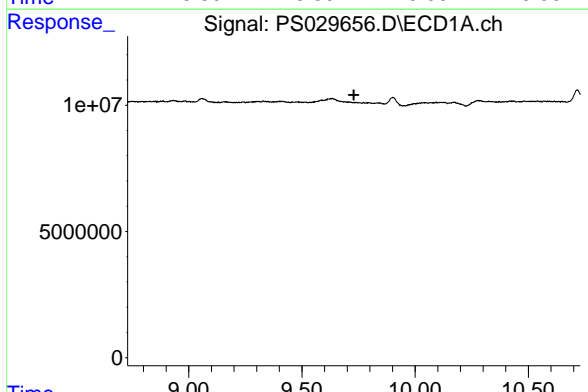


#9 2,4-D  
 R.T.: 8.049 min  
 Delta R.T.: 0.007 min  
 Response: 2627215  
 Conc: 1.09 ng/ml

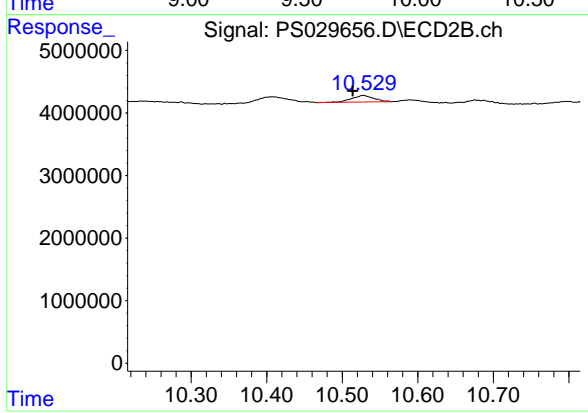
Instrument :  
 ECD\_S  
 ClientSampleId :



#9 2,4-D  
 R.T.: 0.000 min  
 Exp R.T. : 8.671 min  
 Response: 0  
 Conc: N.D.



#13 2,4-DB  
 R.T.: 0.000 min  
 Exp R.T. : 9.729 min  
 Response: 0  
 Conc: N.D.



#13 2,4-DB  
 R.T.: 10.528 min  
 Delta R.T.: 0.014 min  
 Response: 2144430  
 Conc: 2.89 ng/ml