

Data Path : Z:\pestpcbsrv\HPCHEM1\ECD_S\Data\PS040225\
 Data File : PS029659.D
 Signal(s) : Signal #1: ECD1A.ch Signal #2: ECD2B.ch
 Acq On : 02 Apr 2025 18:44
 Operator : AR\AJ
 Sample : HSTDICC750
 Misc :
 ALS Vial : 7 Sample Multiplier: 1

Instrument :
 ECD_S
 ClientSampleId :

Integration File signal 1: autoint1.e
 Integration File signal 2: autoint2.e
 Quant Time: Apr 02 21:47:20 2025
 Quant Method : Z:\pestpcbsrv\HPCHEM1\ECD_S\Method\PS040225.M
 Quant Title : 8080.M
 QLast Update : Wed Apr 02 21:45:08 2025
 Response via : Initial Calibration
 Integrator: ChemStation

Volume Inj. : 1 µl
 Signal #1 Phase : ZB-MR1 Signal #2 Phase: ZB-MR2
 Signal #1 Info : 30M x 0.32mm x0.5 Signal #2 Info : 30M x 0.32mm x 0.25µm

Compound	RT#1	RT#2	Resp#1	Resp#2	ng/ml	ng/ml

System Monitoring Compounds						
4) S 2,4-DCAA	6.963	7.475	1484.5E6	495.1E6	750.000	750.000
Target Compounds						
1) T Dalapon	2.463	2.533	2228.4E6	1046.8E6	682.500	682.500
2) T 3,5-DICHL...	6.165	6.470	2051.3E6	654.3E6	697.500	697.500
3) T 4-Nitroph...	6.753	7.009	929.4E6	466.5E6	682.500	682.500
5) T DICAMBA	7.140	7.662	5837.2E6	2574.8E6	705.000	705.000
6) T MCPP	7.318	7.767	388.3E6	123.5E6	70.500	70.500
7) T MCPA	7.461	7.999	514.6E6	158.5E6	69.750	69.750
8) T DICHLORPROP	7.822	8.356	1458.1E6	638.1E6	705.000	705.000
9) T 2,4-D	8.042	8.671	1598.6E6	707.1E6	705.000	705.000
10) T Pentachlo...	8.321	9.173	20714.3E6	12625.5E6	712.500	712.500
11) T 2,4,5-TP ...	8.888	9.551	8065.8E6	5027.7E6	712.500	712.500
12) T 2,4,5-T	9.170	9.957	8063.3E6	4708.7E6	712.500	712.500
13) T 2,4-DB	9.729	10.514	1337.9E6	509.4E6	712.500	712.500
14) T DINOSEB	10.895	10.887	5848.2E6	3491.3E6	705.000	705.000
15) T Picloram	10.713	11.930	10818.9E6	14541.3E6	712.500	1311.588 #
16) T DCPA	11.195	11.930	9915.1E6	14541.3E6	720.000	1446.877 #

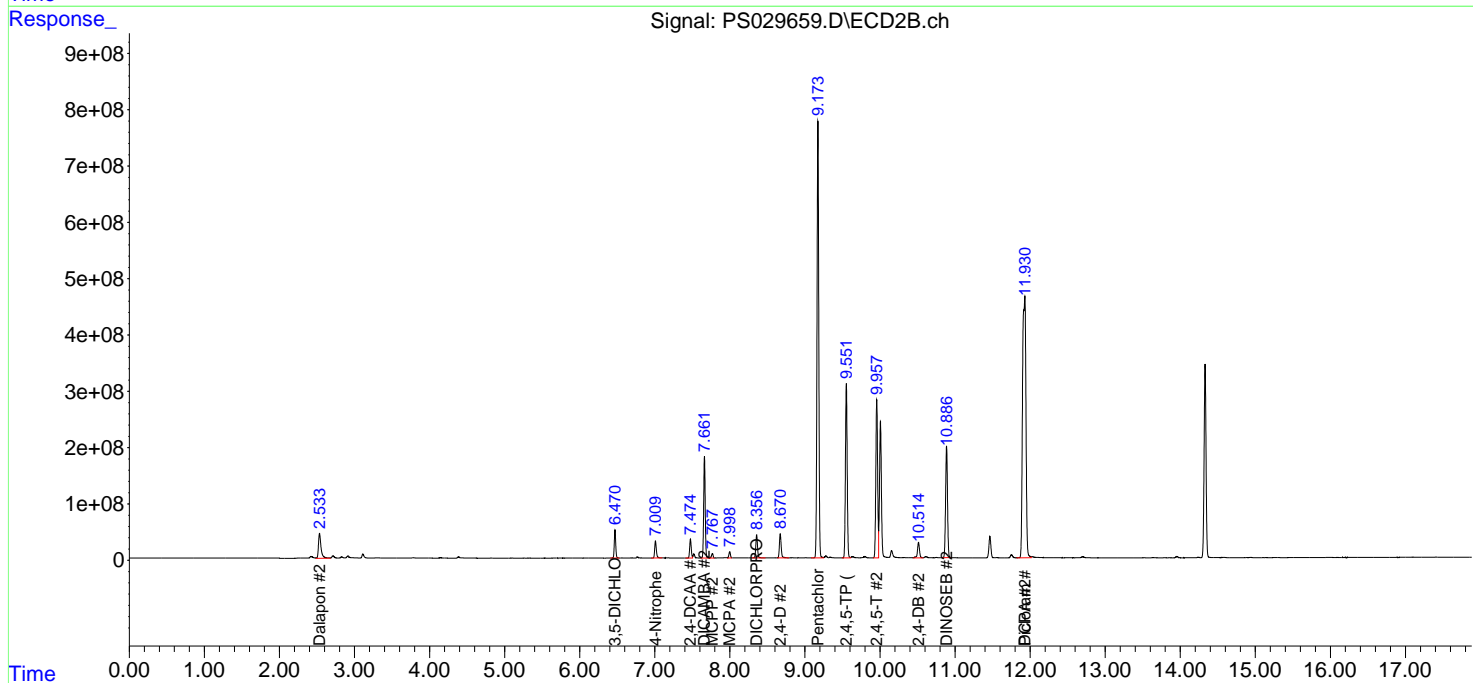
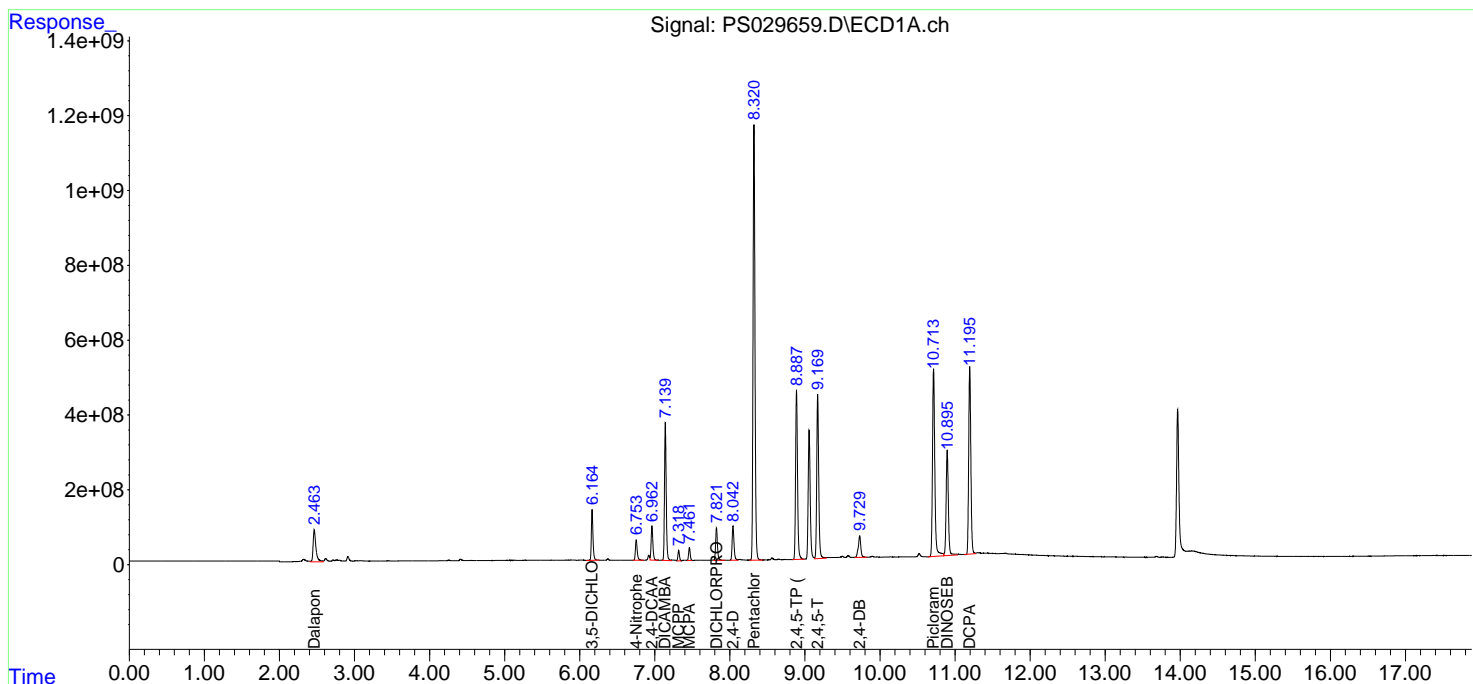
(f)=RT Delta > 1/2 Window (#)=Amounts differ by > 25% (m)=manual int.

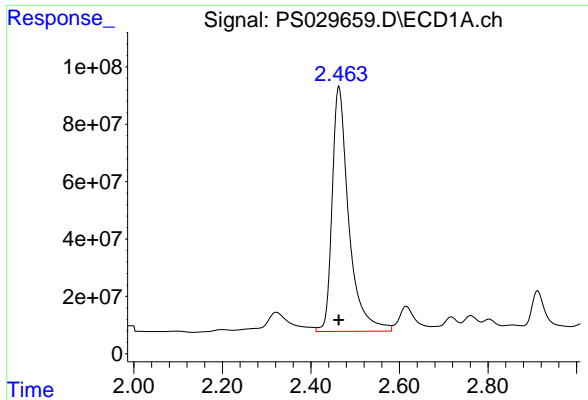
Data Path : Z:\pestpcbsrv\HPCHEM1\ECD_S\Data\PS040225\
 Data File : PS029659.D
 Signal(s) : Signal #1: ECD1A.ch Signal #2: ECD2B.ch
 Acq On : 02 Apr 2025 18:44
 Operator : AR\AJ
 Sample : HSTDICC750
 Misc :
 ALS Vial : 7 Sample Multiplier: 1

Instrument :
 ECD_S
 ClientSampleId :

Integration File signal 1: autoint1.e
 Integration File signal 2: autoint2.e
 Quant Time: Apr 02 21:47:20 2025
 Quant Method : Z:\pestpcbsrv\HPCHEM1\ECD_S\Method\PS040225.M
 Quant Title : 8080.M
 QLast Update : Wed Apr 02 21:45:08 2025
 Response via : Initial Calibration
 Integrator: ChemStation

Volume Inj. : 1 µl
 Signal #1 Phase : ZB-MR1 Signal #2 Phase: ZB-MR2
 Signal #1 Info : 30M x 0.32mm x0.5 Signal #2 Info : 30M x 0.32mm x 0.25µm

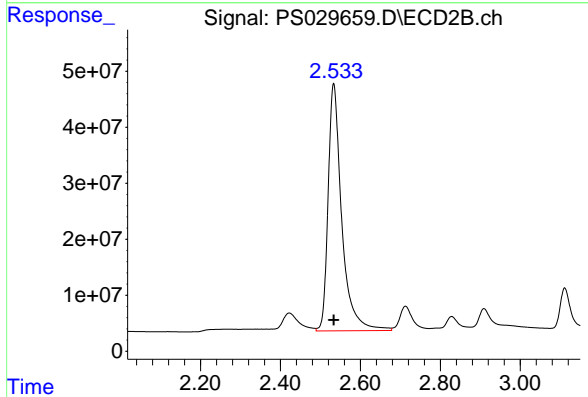




#1 Dalapon

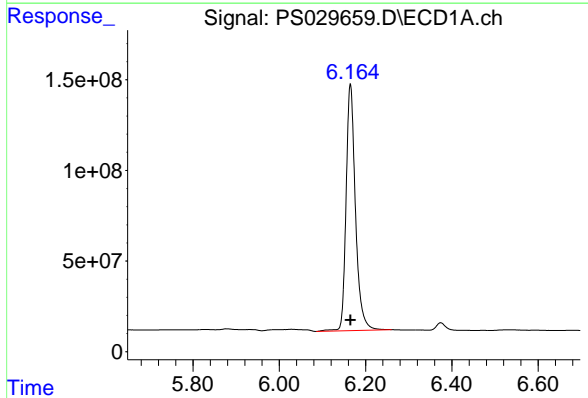
R.T.: 2.463 min
 Delta R.T.: 0.000 min
 Response: 2228384729
 Conc: 682.50 ng/ml

Instrument :
 ECD_S
 ClientSampleId :



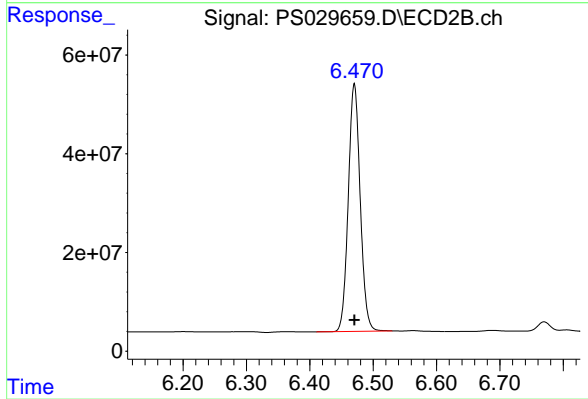
#1 Dalapon

R.T.: 2.533 min
 Delta R.T.: 0.000 min
 Response: 1046813946
 Conc: 682.50 ng/ml



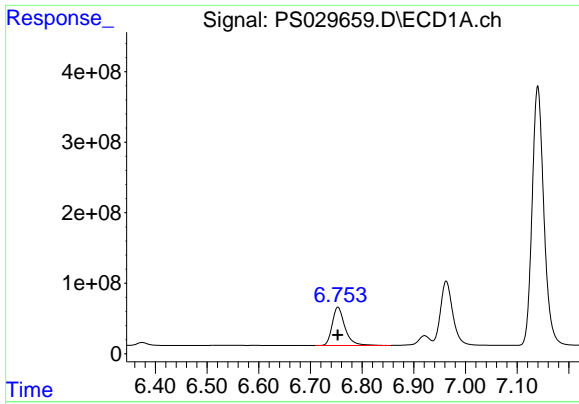
#2 3,5-DICHLOROBENZOIC ACID

R.T.: 6.165 min
 Delta R.T.: 0.000 min
 Response: 2051257915
 Conc: 697.50 ng/ml



#2 3,5-DICHLOROBENZOIC ACID

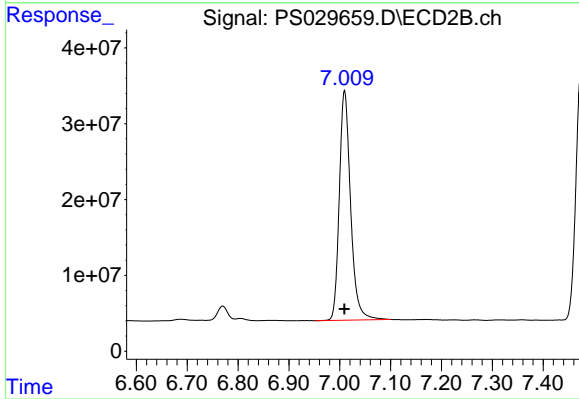
R.T.: 6.470 min
 Delta R.T.: 0.000 min
 Response: 654341240
 Conc: 697.50 ng/ml



#3 4-Nitrophenol

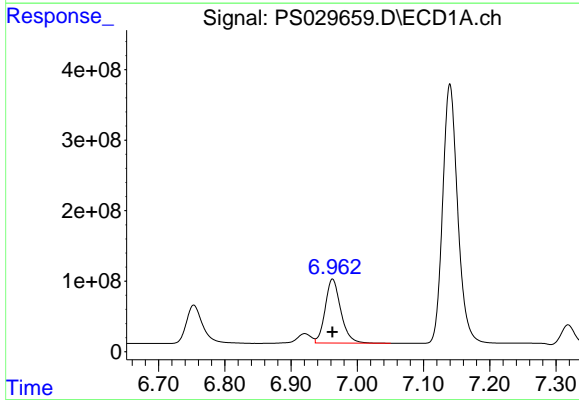
R.T.: 6.753 min
 Delta R.T.: 0.000 min
 Response: 929448251
 Conc: 682.50 ng/ml

Instrument :
 ECD_S
 ClientSampleId :



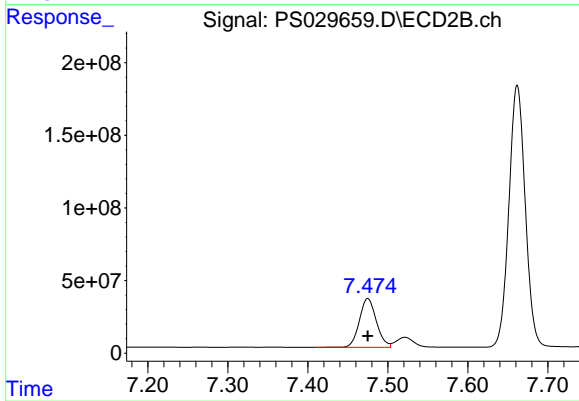
#3 4-Nitrophenol

R.T.: 7.009 min
 Delta R.T.: 0.000 min
 Response: 466483862
 Conc: 682.50 ng/ml



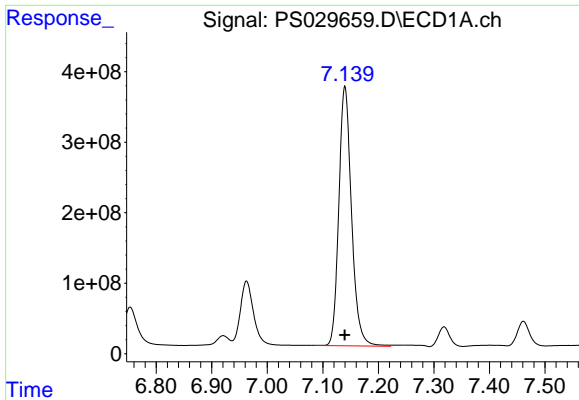
#4 2,4-DCAA

R.T.: 6.963 min
 Delta R.T.: 0.000 min
 Response: 1484503787
 Conc: 750.00 ng/ml



#4 2,4-DCAA

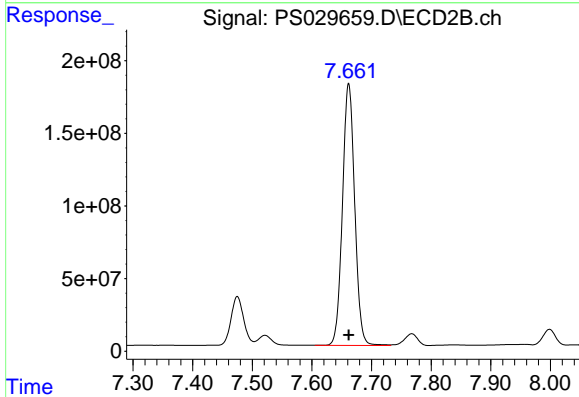
R.T.: 7.475 min
 Delta R.T.: 0.000 min
 Response: 495076303
 Conc: 750.00 ng/ml



#5 DICAMBA

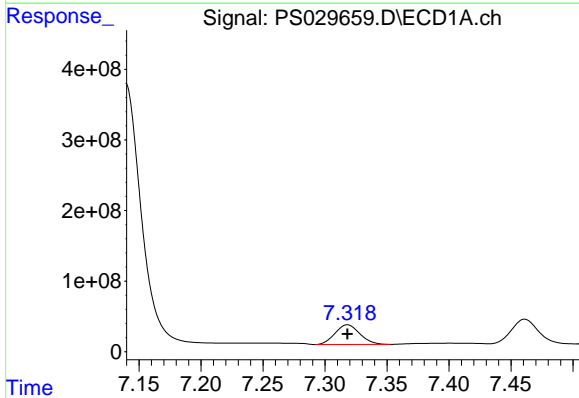
R.T.: 7.140 min
 Delta R.T.: 0.000 min
 Response: 5837239041
 Conc: 705.00 ng/ml

Instrument :
 ECD_S
 ClientSampleId :



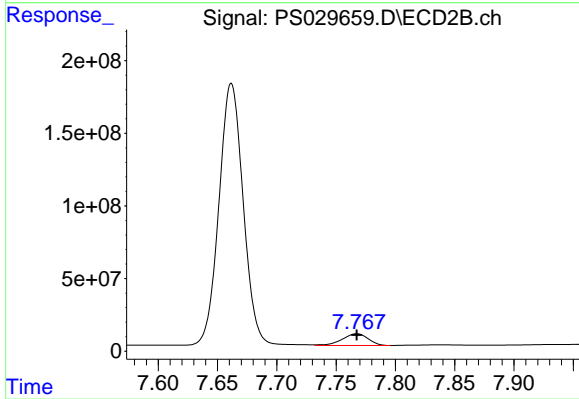
#5 DICAMBA

R.T.: 7.662 min
 Delta R.T.: 0.000 min
 Response: 2574833457
 Conc: 705.00 ng/ml



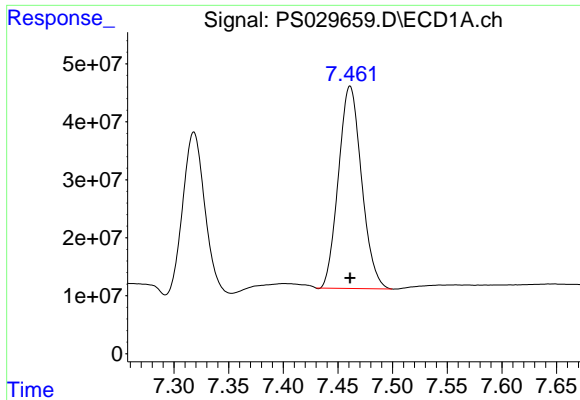
#6 MCP

R.T.: 7.318 min
 Delta R.T.: 0.000 min
 Response: 388273166
 Conc: 70.50 ug/ml



#6 MCP

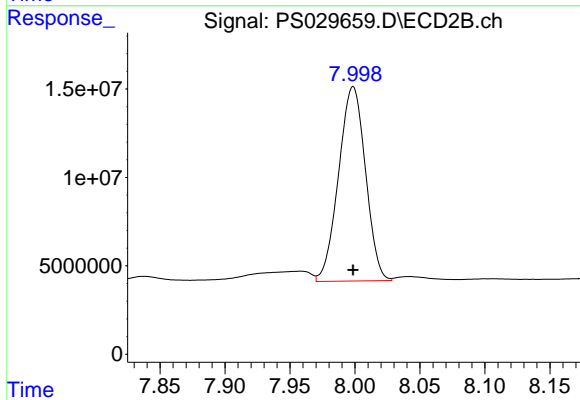
R.T.: 7.767 min
 Delta R.T.: 0.000 min
 Response: 123459301
 Conc: 70.50 ug/ml



#7 MCPA

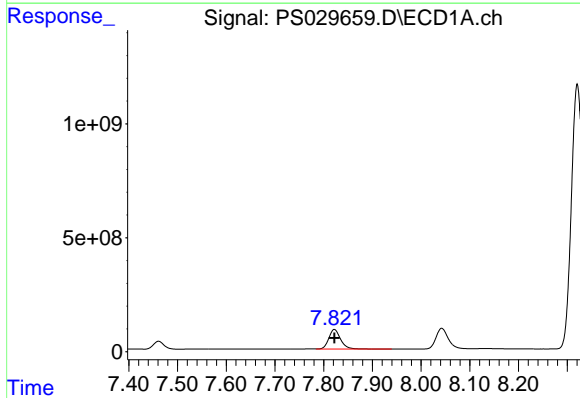
R.T.: 7.461 min
 Delta R.T.: 0.000 min
 Response: 514646256
 Conc: 69.75 ug/ml

Instrument :
 ECD_S
 ClientSampleId :



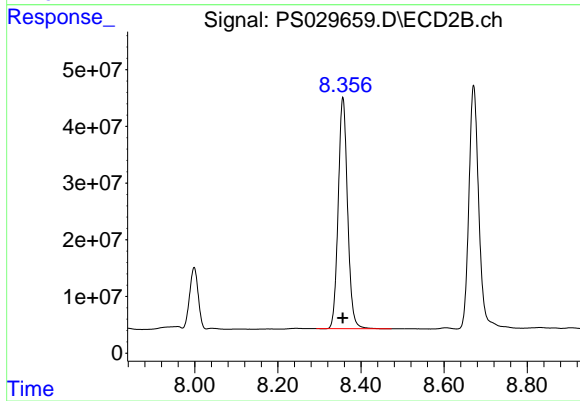
#7 MCPA

R.T.: 7.999 min
 Delta R.T.: 0.000 min
 Response: 158487737
 Conc: 69.75 ug/ml



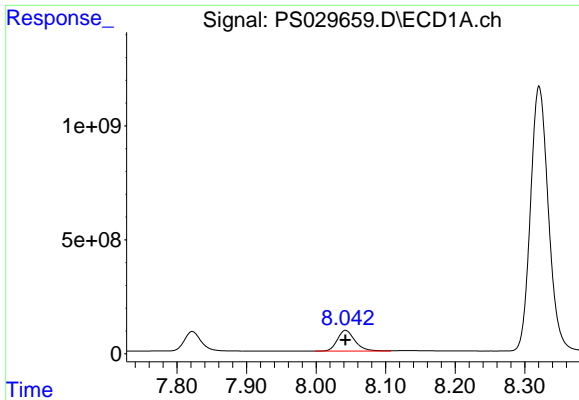
#8 DICHLORPROP

R.T.: 7.822 min
 Delta R.T.: 0.000 min
 Response: 1458089230
 Conc: 705.00 ng/ml



#8 DICHLORPROP

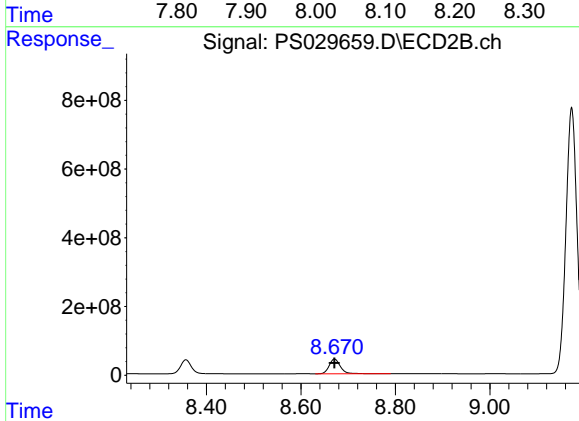
R.T.: 8.356 min
 Delta R.T.: 0.000 min
 Response: 638070319
 Conc: 705.00 ng/ml



#9 2,4-D

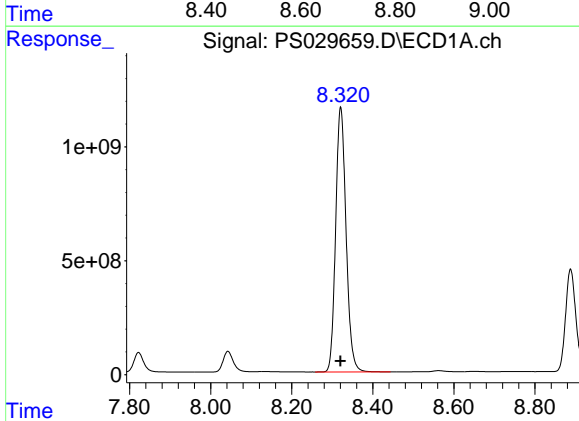
R.T.: 8.042 min
 Delta R.T.: 0.000 min
 Response: 1598642604
 Conc: 705.00 ng/ml

Instrument :
 ECD_S
 ClientSampleId :



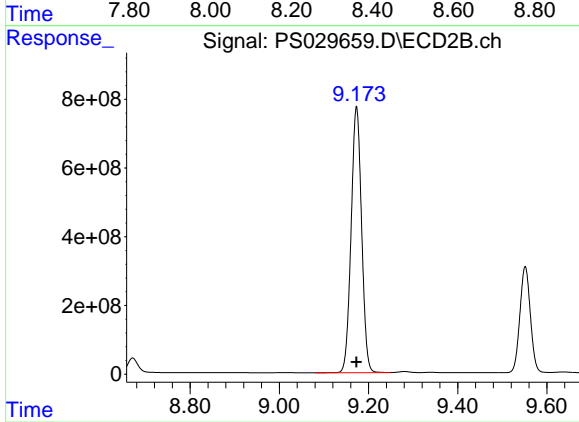
#9 2,4-D

R.T.: 8.671 min
 Delta R.T.: 0.000 min
 Response: 707133970
 Conc: 705.00 ng/ml



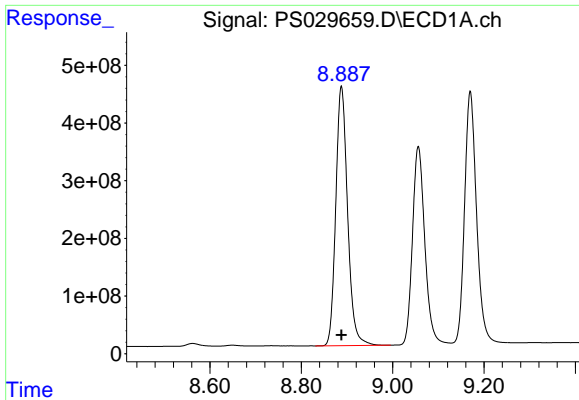
#10 Pentachlorophenol

R.T.: 8.321 min
 Delta R.T.: 0.000 min
 Response: 20714283824
 Conc: 712.50 ng/ml



#10 Pentachlorophenol

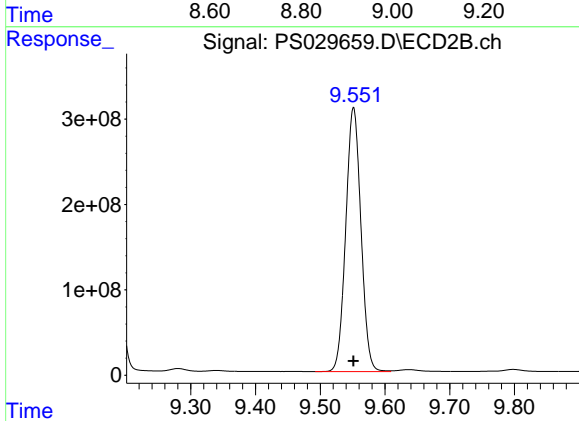
R.T.: 9.173 min
 Delta R.T.: 0.000 min
 Response: 12625547070
 Conc: 712.50 ng/ml



#11 2,4,5-TP (SILVEX)

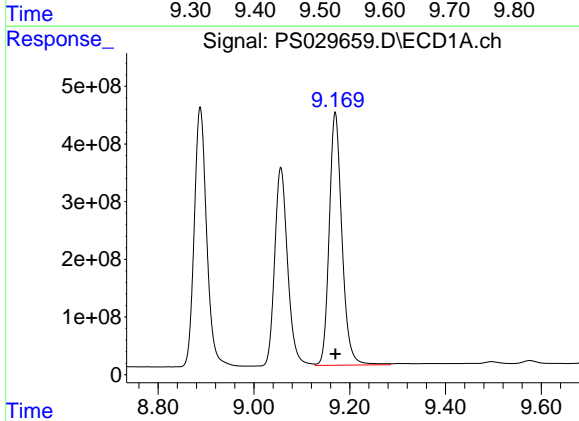
R.T.: 8.888 min
 Delta R.T.: 0.000 min
 Response: 8065771048
 Conc: 712.50 ng/ml

Instrument :
 ECD_S
 ClientSampleId :



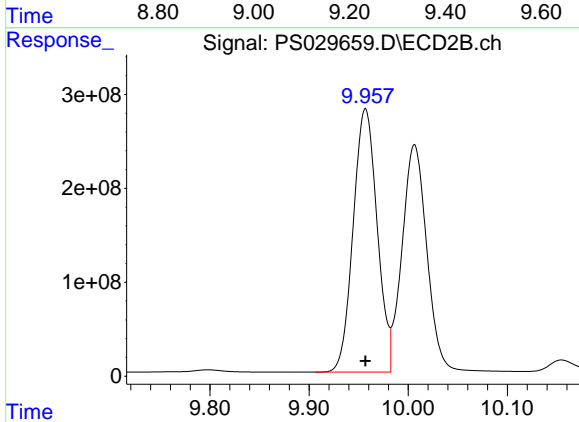
#11 2,4,5-TP (SILVEX)

R.T.: 9.551 min
 Delta R.T.: 0.000 min
 Response: 5027671480
 Conc: 712.50 ng/ml



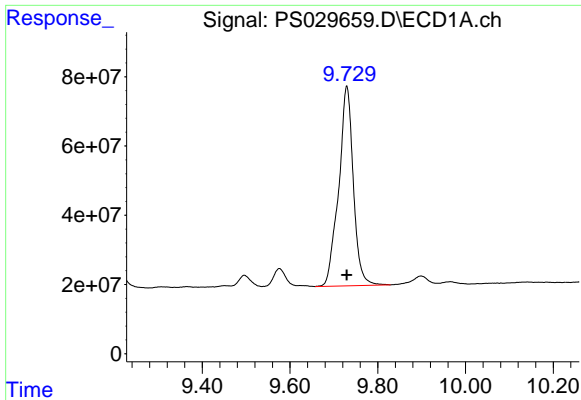
#12 2,4,5-T

R.T.: 9.170 min
 Delta R.T.: 0.000 min
 Response: 8063347000
 Conc: 712.50 ng/ml



#12 2,4,5-T

R.T.: 9.957 min
 Delta R.T.: 0.000 min
 Response: 4708725173
 Conc: 712.50 ng/ml

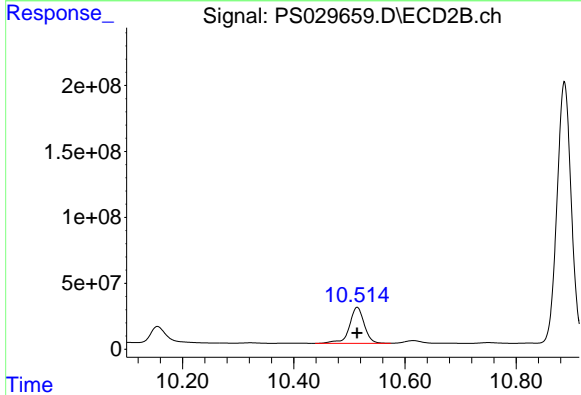


#13 2,4-DB

R.T.: 9.729 min
Delta R.T.: 0.000 min
Response: 1337934625
Conc: 712.50 ng/ml

Instrument :
ECD_S
ClientSampleId :

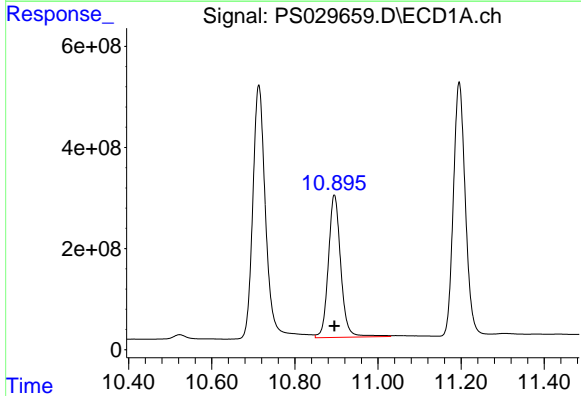
Time



#13 2,4-DB

R.T.: 10.514 min
Delta R.T.: 0.000 min
Response: 509432895
Conc: 712.50 ng/ml

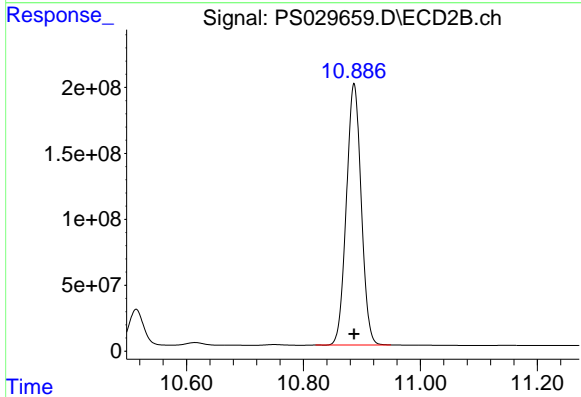
Time



#14 DINOSEB

R.T.: 10.895 min
Delta R.T.: 0.000 min
Response: 5848156275
Conc: 705.00 ng/ml

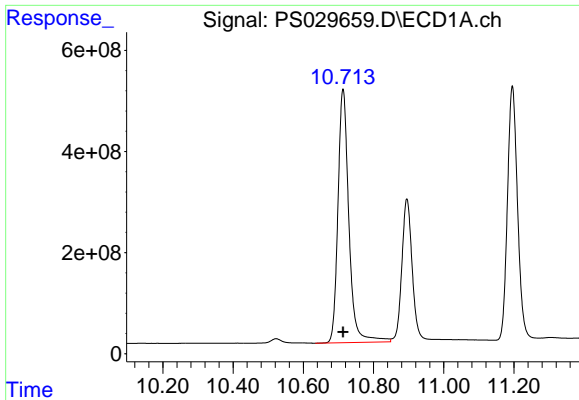
Time



#14 DINOSEB

R.T.: 10.887 min
Delta R.T.: 0.000 min
Response: 3491268927
Conc: 705.00 ng/ml

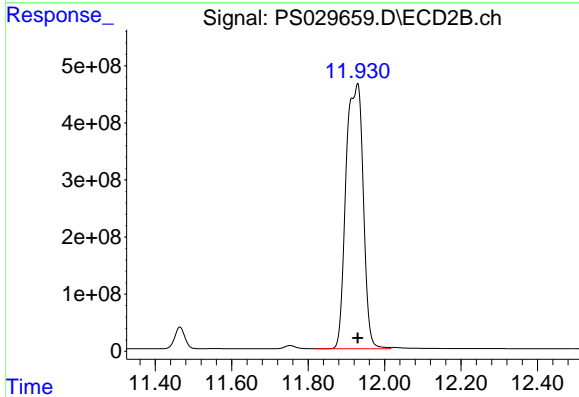
Time



#15 Picloram

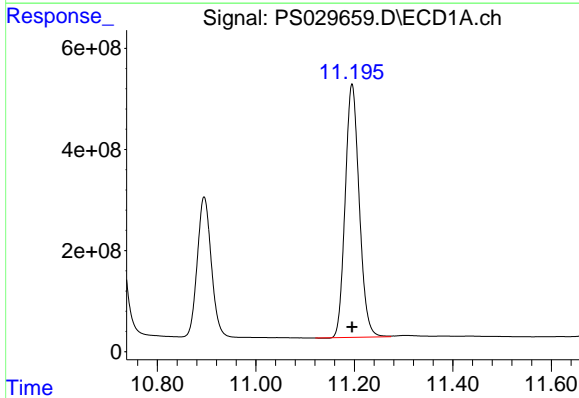
R.T.: 10.713 min
 Delta R.T.: 0.000 min
 Response: 10818873063
 Conc: 712.50 ng/ml

Instrument :
 ECD_S
 ClientSampleId :



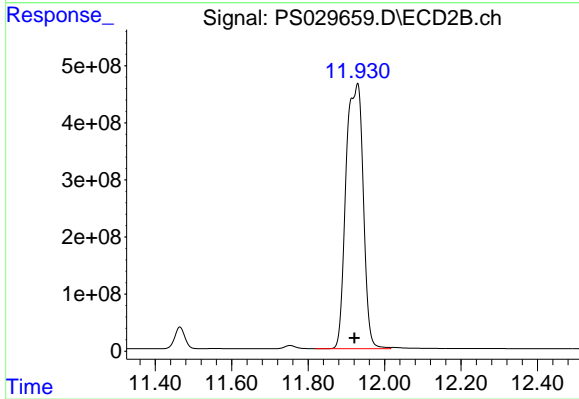
#15 Picloram

R.T.: 11.930 min
 Delta R.T.: 0.000 min
 Response: 14541305789
 Conc: 1311.59 ng/ml



#16 DCPA

R.T.: 11.195 min
 Delta R.T.: 0.000 min
 Response: 9915081854
 Conc: 720.00 ng/ml



#16 DCPA

R.T.: 11.930 min
 Delta R.T.: 0.009 min
 Response: 14541305789
 Conc: 1446.88 ng/ml