

Data Path : Z:\pestpcbsrv\HPCHEM1\ECD\_S\Data\PS040225\  
 Data File : PS029660.D  
 Signal(s) : Signal #1: ECD1A.ch Signal #2: ECD2B.ch  
 Acq On : 02 Apr 2025 19:32  
 Operator : AR\AJ  
 Sample : HSTDICC1000  
 Misc :  
 ALS Vial : 9 Sample Multiplier: 1

Instrument :  
 ECD\_S  
 ClientSampleId :

Integration File signal 1: autoint1.e  
 Integration File signal 2: autoint2.e  
 Quant Time: Apr 02 21:47:50 2025  
 Quant Method : Z:\pestpcbsrv\HPCHEM1\ECD\_S\Method\PS040225.M  
 Quant Title : 8080.M  
 QLast Update : Wed Apr 02 21:45:08 2025  
 Response via : Initial Calibration  
 Integrator: ChemStation

Volume Inj. : 1 µl  
 Signal #1 Phase : ZB-MR1 Signal #2 Phase: ZB-MR2  
 Signal #1 Info : 30M x 0.32mm x0.5 Signal #2 Info : 30M x 0.32mm x 0.25µm

	Compound	RT#1	RT#2	Resp#1	Resp#2	ng/ml	ng/ml
-----							
System Monitoring Compounds							
4) S	2,4-DCAA	6.963	7.475	1949.0E6	658.6E6	984.687	997.781
Target Compounds							
1) T	Dalapon	2.463	2.533	2931.9E6	1379.7E6	897.971	899.538
2) T	3,5-DICHL...	6.165	6.471	2698.4E6	869.7E6	917.551	927.061
3) T	4-Nitroph...	6.753	7.010	1229.4E6	617.9E6	902.763	903.979
5) T	DICAMBA	7.140	7.662	7768.3E6	3498.9E6	938.223	958.015
6) T	MCPD	7.319	7.769	543.2E6	167.9E6	98.636	95.855
7) T	MCPA	7.463	8.001	699.2E6	216.5E6	94.768	95.274
8) T	DICHLORPROP	7.822	8.357	1904.9E6	846.0E6	921.024	934.778
9) T	2,4-D	8.043	8.671	2112.0E6	943.5E6	931.373	940.657
10) T	Pentachlo...	8.322	9.174	27238.3E6	16770.4E6	936.904	946.407
11) T	2,4,5-TP ...	8.888	9.552	10687.3E6	6736.3E6	944.073	954.635
12) T	2,4,5-T	9.170	9.957	10696.9E6	6311.3E6	945.212	954.996
13) T	2,4-DB	9.730	10.515	1781.8E6	690.0E6	948.880	965.102
14) T	DINOSEB	10.895	10.887	7700.3E6	4684.3E6	928.272	945.920
15) T	Picloram	10.713	11.929	14447.2E6	19672.2E6	951.454	1774.386 #
16) T	DCPA	11.196	11.929	13124.1E6	19672.2E6	953.028	1957.412 #

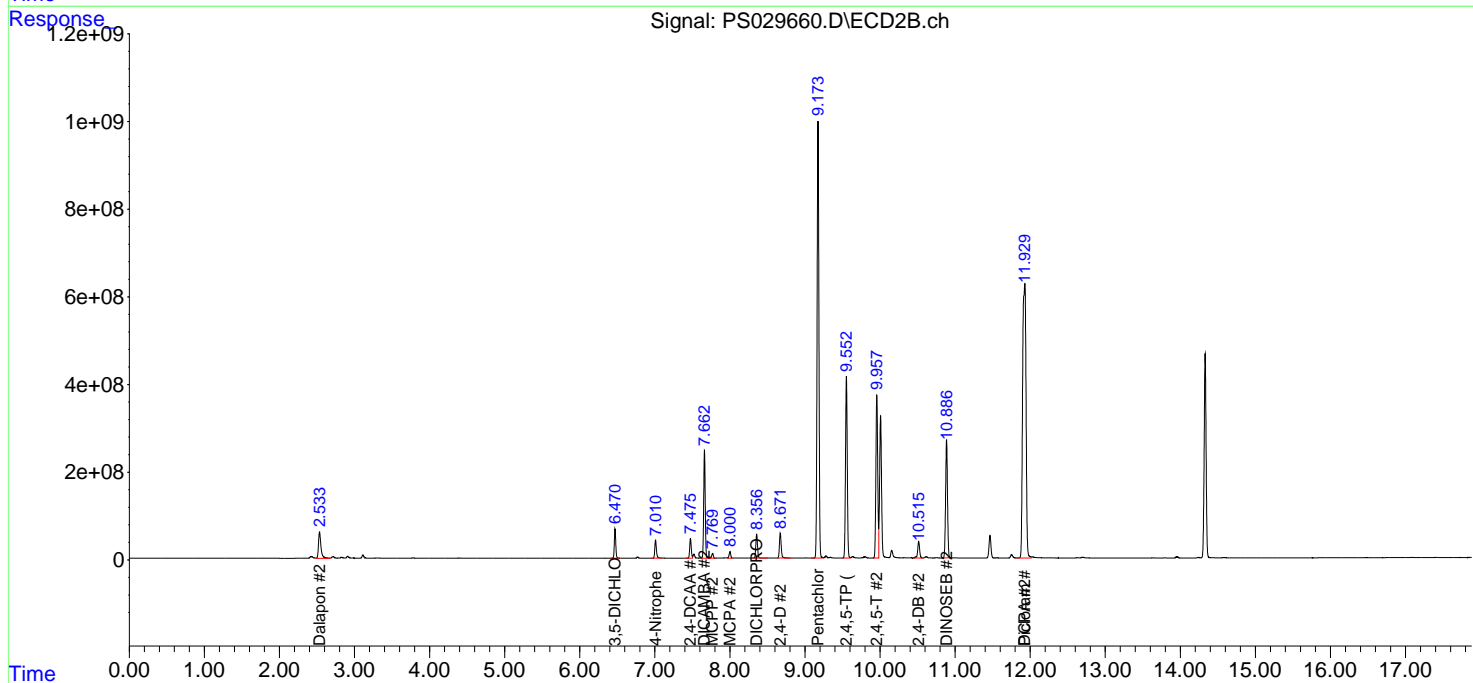
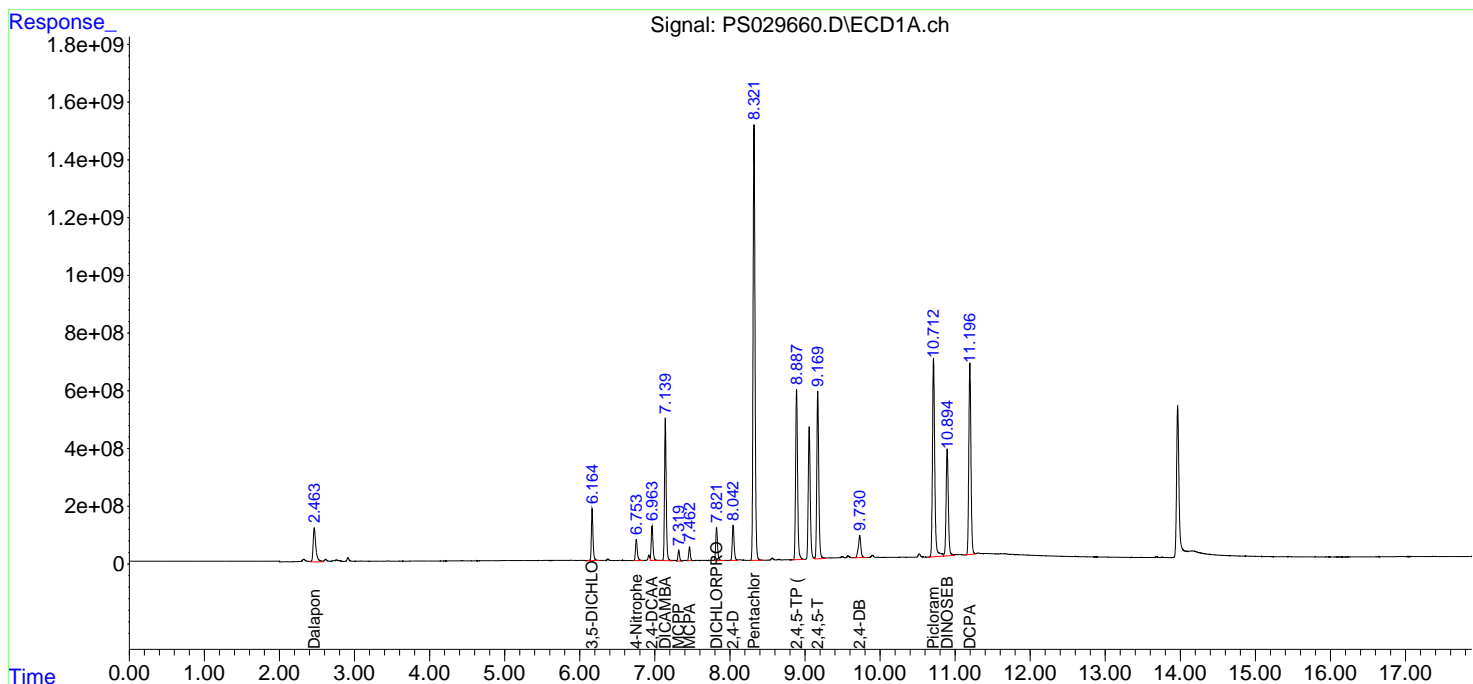
(f)=RT Delta > 1/2 Window (#)=Amounts differ by > 25% (m)=manual int.

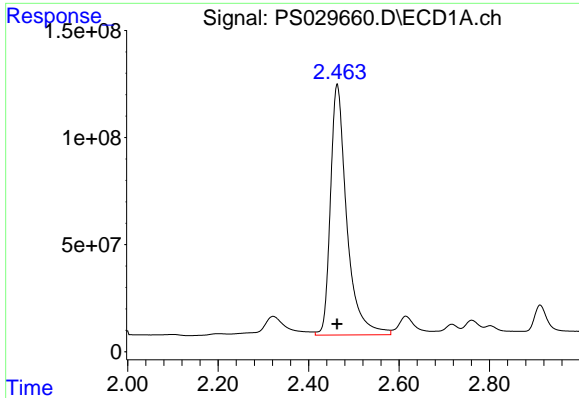
Data Path : Z:\pestpcbsrv\HPCHEM1\ECD\_S\Data\PS040225\  
 Data File : PS029660.D  
 Signal(s) : Signal #1: ECD1A.ch Signal #2: ECD2B.ch  
 Acq On : 02 Apr 2025 19:32  
 Operator : AR\AJ  
 Sample : HSTDIC1000  
 Misc :  
 ALS Vial : 9 Sample Multiplier: 1

Instrument :  
 ECD\_S  
 ClientSampleId :

Integration File signal 1: autoint1.e  
 Integration File signal 2: autoint2.e  
 Quant Time: Apr 02 21:47:50 2025  
 Quant Method : Z:\pestpcbsrv\HPCHEM1\ECD\_S\Method\PS040225.M  
 Quant Title : 8080.M  
 QLast Update : Wed Apr 02 21:45:08 2025  
 Response via : Initial Calibration  
 Integrator: ChemStation

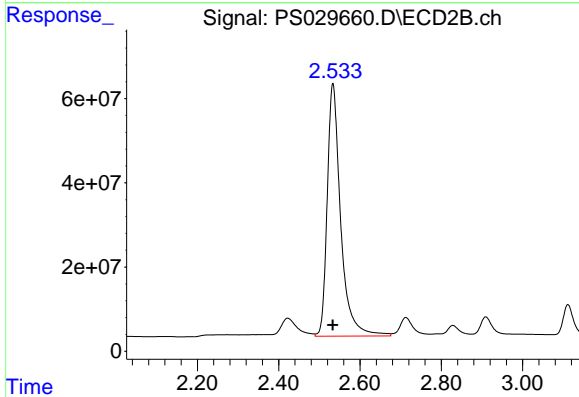
Volume Inj. : 1 µl  
 Signal #1 Phase : ZB-MR1 Signal #2 Phase: ZB-MR2  
 Signal #1 Info : 30M x 0.32mm x0.5 Signal #2 Info : 30M x 0.32mm x 0.25µm



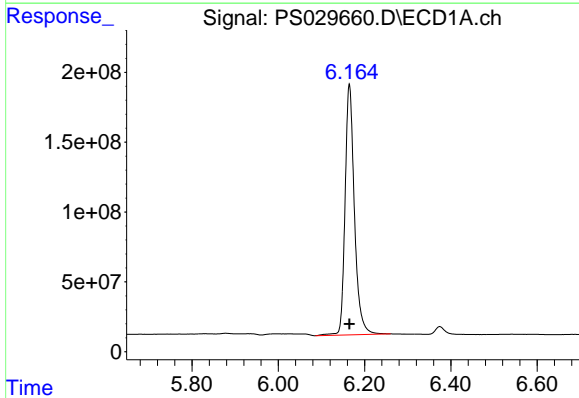


#1 Dalapon  
 R.T.: 2.463 min  
 Delta R.T.: 0.000 min  
 Response: 2931904194  
 Conc: 897.97 ng/ml

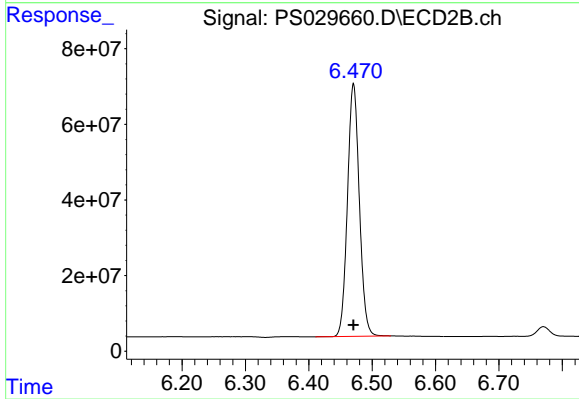
Instrument :  
 ECD\_S  
 ClientSampleId :



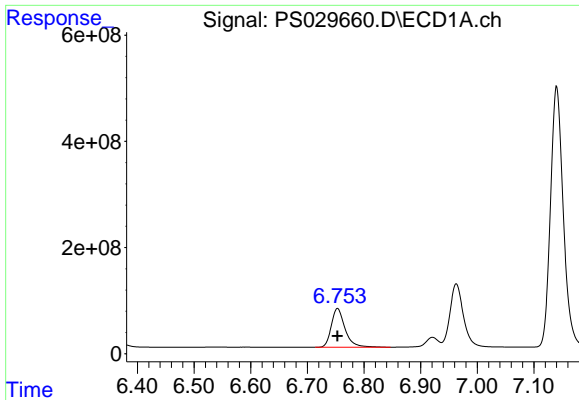
#1 Dalapon  
 R.T.: 2.533 min  
 Delta R.T.: 0.000 min  
 Response: 1379704778  
 Conc: 899.54 ng/ml



#2 3,5-DICHLOROBENZOIC ACID  
 R.T.: 6.165 min  
 Delta R.T.: 0.000 min  
 Response: 2698400361  
 Conc: 917.55 ng/ml



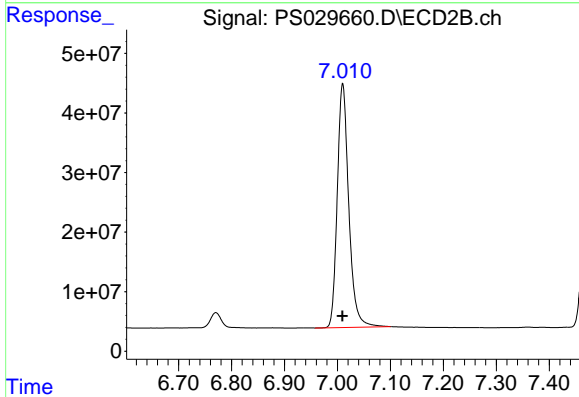
#2 3,5-DICHLOROBENZOIC ACID  
 R.T.: 6.471 min  
 Delta R.T.: 0.000 min  
 Response: 869698084  
 Conc: 927.06 ng/ml



#3 4-Nitrophenol

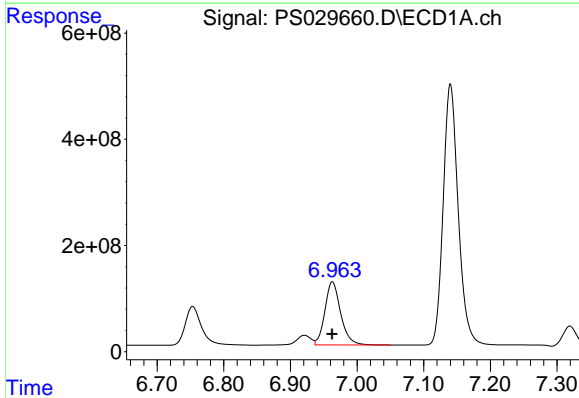
R.T.: 6.753 min  
Delta R.T.: 0.000 min  
Response: 1229408712  
Conc: 902.76 ng/ml

Instrument :  
ECD\_S  
ClientSampleId :



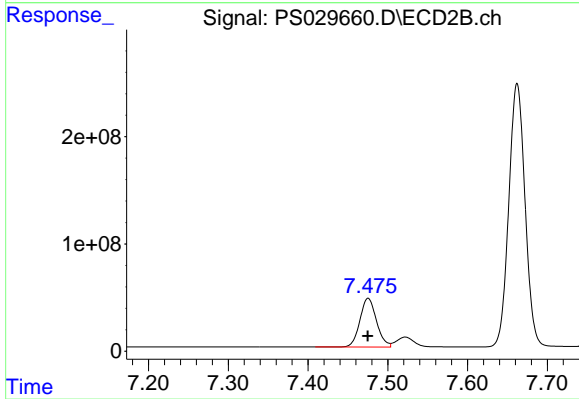
#3 4-Nitrophenol

R.T.: 7.010 min  
Delta R.T.: 0.000 min  
Response: 617862993  
Conc: 903.98 ng/ml



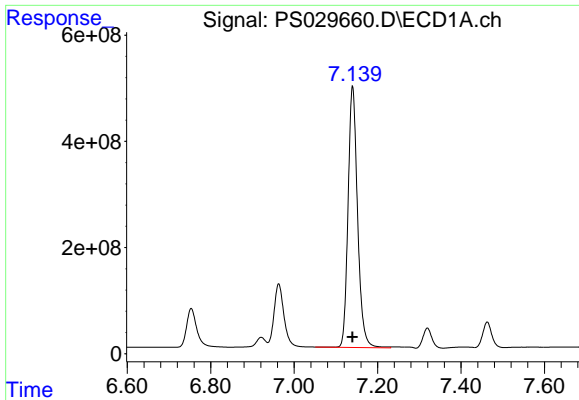
#4 2,4-DCAA

R.T.: 6.963 min  
Delta R.T.: 0.000 min  
Response: 1949027966  
Conc: 984.69 ng/ml



#4 2,4-DCAA

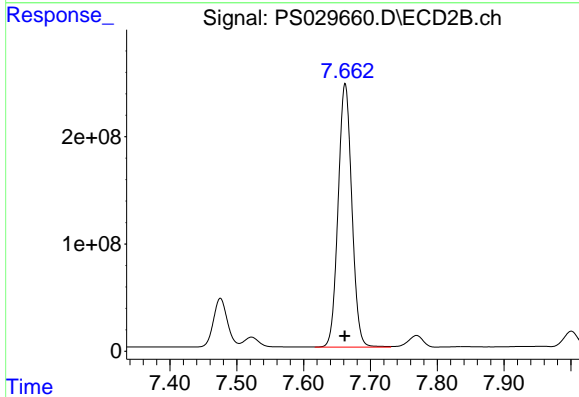
R.T.: 7.475 min  
Delta R.T.: 0.000 min  
Response: 658637284  
Conc: 997.78 ng/ml



#5 DICAMBA

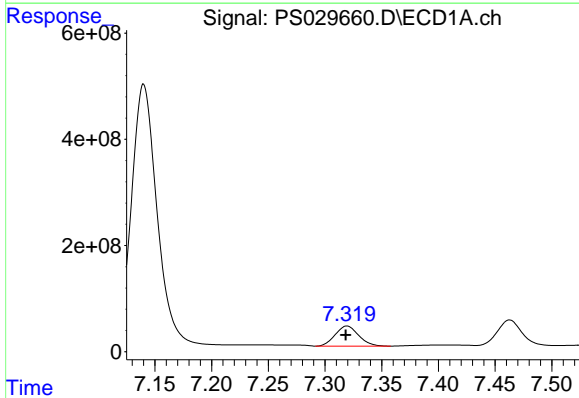
R.T.: 7.140 min  
 Delta R.T.: 0.000 min  
 Response: 7768270498  
 Conc: 938.22 ng/ml

Instrument :  
 ECD\_S  
 ClientSampleId :



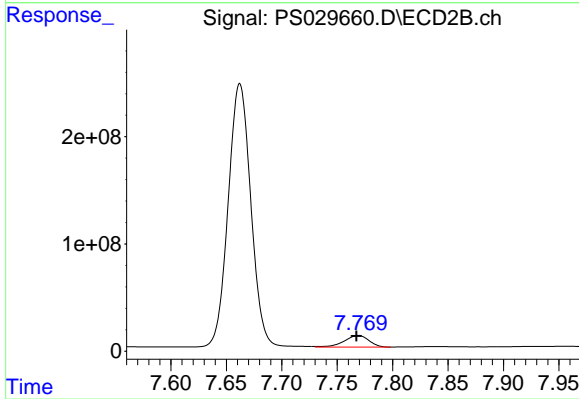
#5 DICAMBA

R.T.: 7.662 min  
 Delta R.T.: 0.000 min  
 Response: 3498905684  
 Conc: 958.01 ng/ml



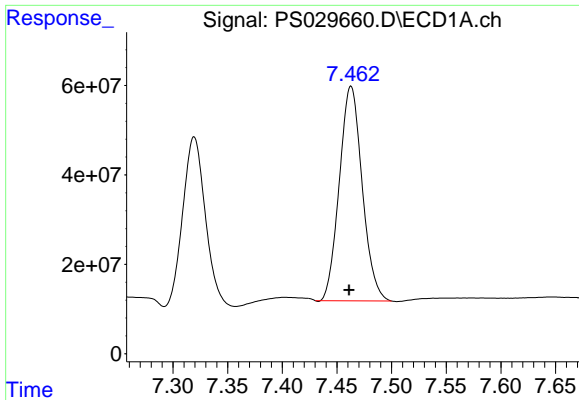
#6 MCPP

R.T.: 7.319 min  
 Delta R.T.: 0.001 min  
 Response: 543229329  
 Conc: 98.64 ug/ml



#6 MCPP

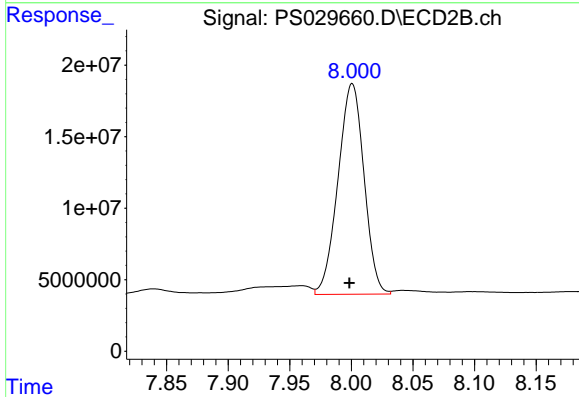
R.T.: 7.769 min  
 Delta R.T.: 0.002 min  
 Response: 167861106  
 Conc: 95.86 ug/ml



#7 MCPA

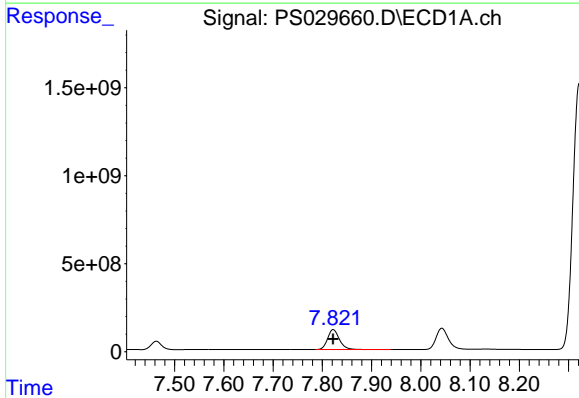
R.T.: 7.463 min  
 Delta R.T.: 0.002 min  
 Response: 699238388  
 Conc: 94.77 ug/ml

Instrument :  
 ECD\_S  
 ClientSampleId :



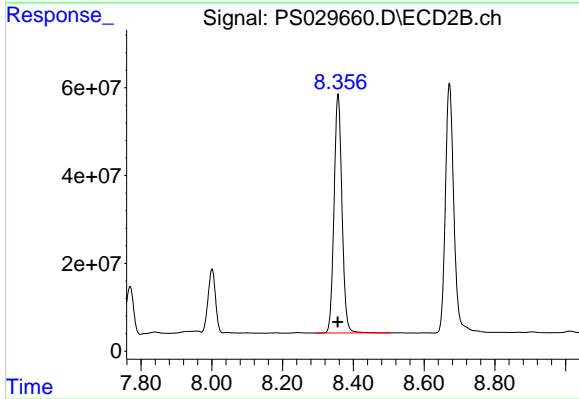
#7 MCPA

R.T.: 8.001 min  
 Delta R.T.: 0.002 min  
 Response: 216483308  
 Conc: 95.27 ug/ml



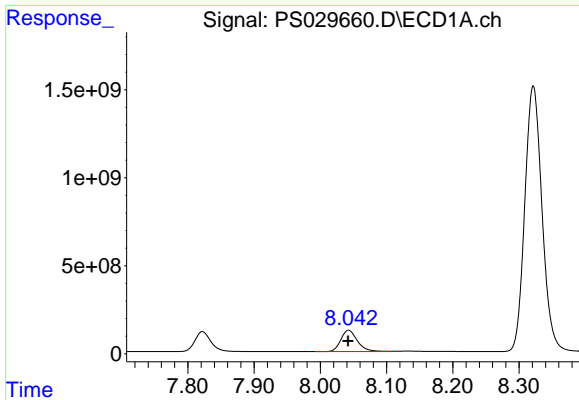
#8 DICHLORPROP

R.T.: 7.822 min  
 Delta R.T.: 0.000 min  
 Response: 1904873098  
 Conc: 921.02 ng/ml



#8 DICHLORPROP

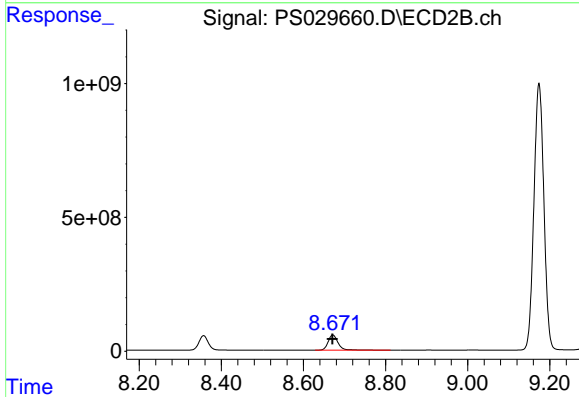
R.T.: 8.357 min  
 Delta R.T.: 0.000 min  
 Response: 846033877  
 Conc: 934.78 ng/ml



#9 2,4-D

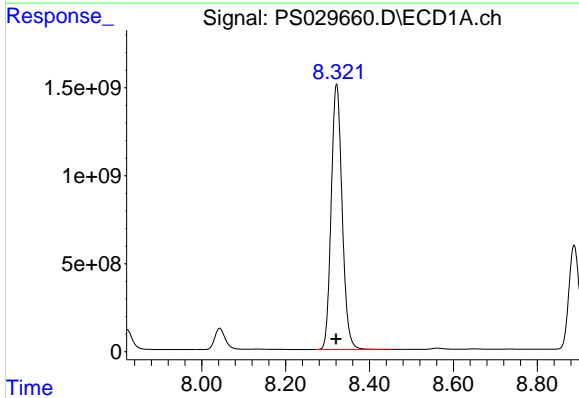
R.T.: 8.043 min  
 Delta R.T.: 0.000 min  
 Response: 2111960224  
 Conc: 931.37 ng/ml

Instrument :  
 ECD\_S  
 ClientSampleId :



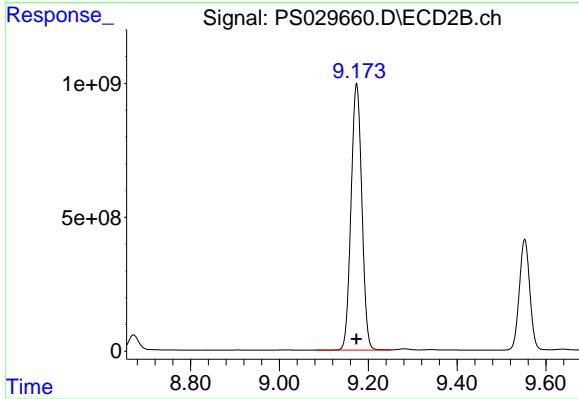
#9 2,4-D

R.T.: 8.671 min  
 Delta R.T.: 0.000 min  
 Response: 943504117  
 Conc: 940.66 ng/ml



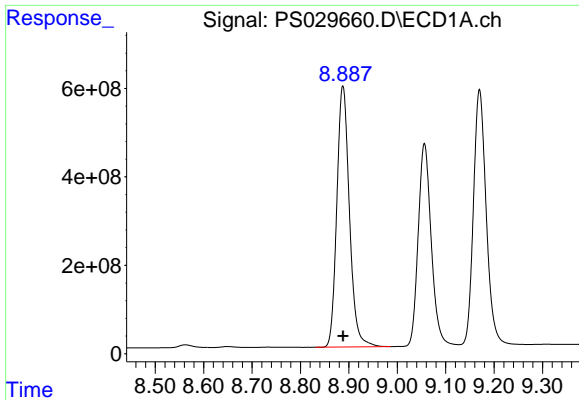
#10 Pentachlorophenol

R.T.: 8.322 min  
 Delta R.T.: 0.000 min  
 Response: 27238310436  
 Conc: 936.90 ng/ml



#10 Pentachlorophenol

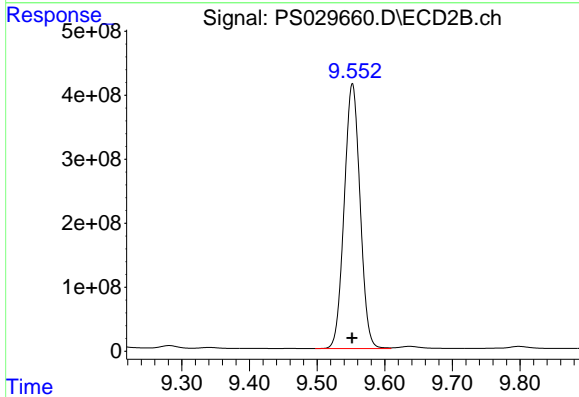
R.T.: 9.174 min  
 Delta R.T.: 0.000 min  
 Response: 16770397791  
 Conc: 946.41 ng/ml



#11 2,4,5-TP (SILVEX)

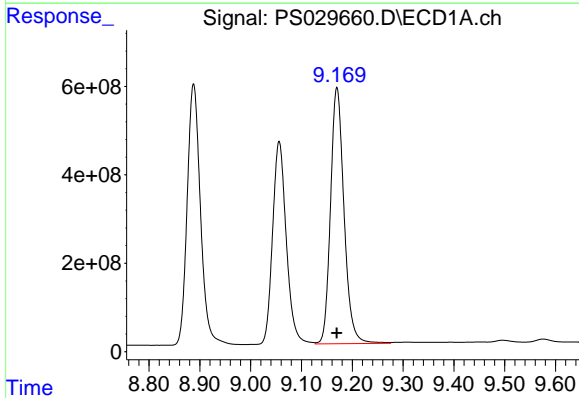
R.T.: 8.888 min  
 Delta R.T.: 0.000 min  
 Response: 10687262604  
 Conc: 944.07 ng/ml

Instrument :  
 ECD\_S  
 ClientSampleId :



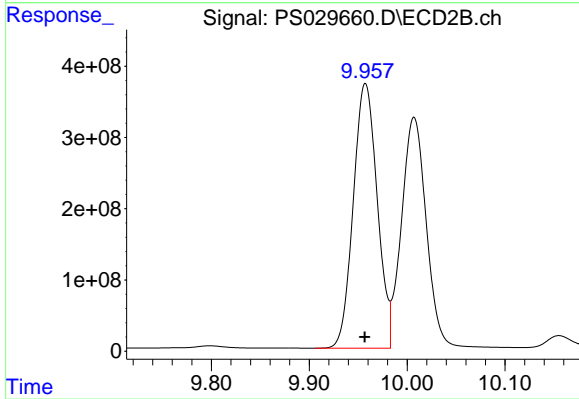
#11 2,4,5-TP (SILVEX)

R.T.: 9.552 min  
 Delta R.T.: 0.000 min  
 Response: 6736269494  
 Conc: 954.64 ng/ml



#12 2,4,5-T

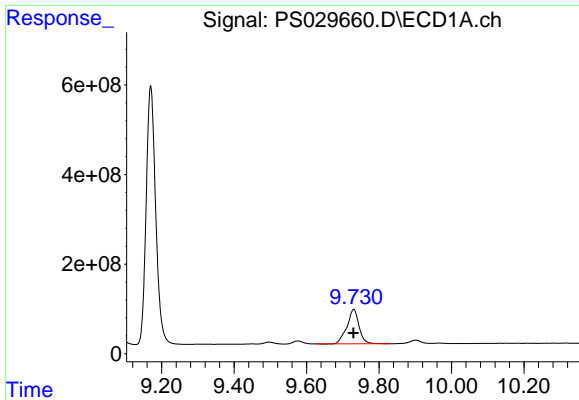
R.T.: 9.170 min  
 Delta R.T.: 0.000 min  
 Response: 10696948094  
 Conc: 945.21 ng/ml



#12 2,4,5-T

R.T.: 9.957 min  
 Delta R.T.: 0.000 min  
 Response: 6311320366  
 Conc: 955.00 ng/ml

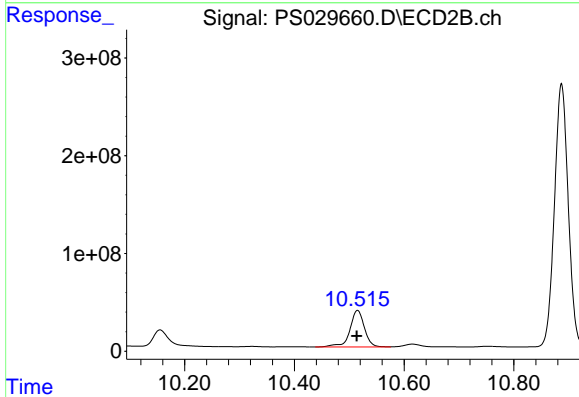




#13 2,4-DB

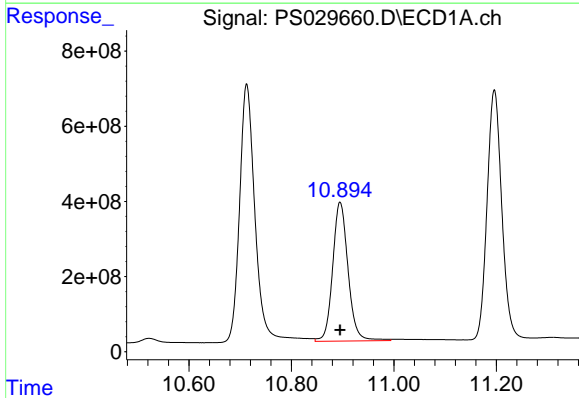
R.T.: 9.730 min  
 Delta R.T.: 0.000 min  
 Response: 1781810233  
 Conc: 948.88 ng/ml

Instrument :  
 ECD\_S  
 ClientSampleId :



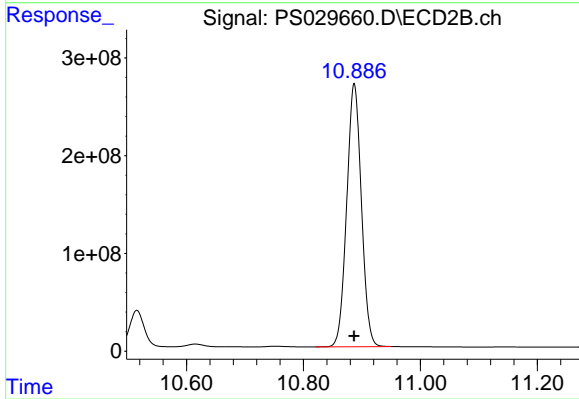
#13 2,4-DB

R.T.: 10.515 min  
 Delta R.T.: 0.001 min  
 Response: 690041535  
 Conc: 965.10 ng/ml



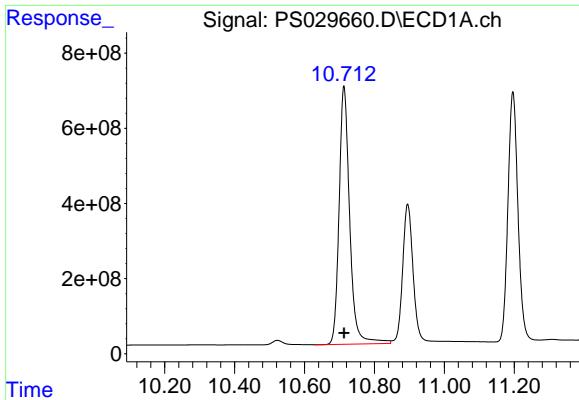
#14 DINOSEB

R.T.: 10.895 min  
 Delta R.T.: 0.000 min  
 Response: 7700250924  
 Conc: 928.27 ng/ml



#14 DINOSEB

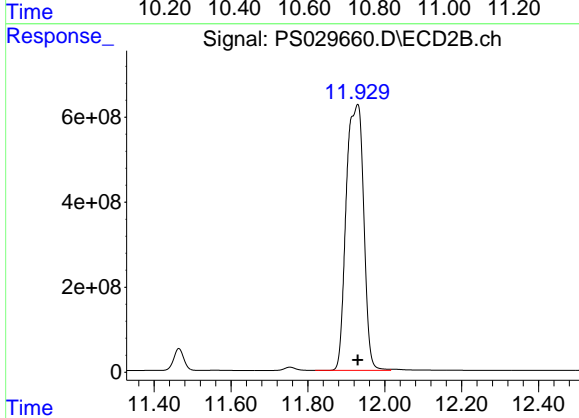
R.T.: 10.887 min  
 Delta R.T.: 0.000 min  
 Response: 4684339661  
 Conc: 945.92 ng/ml



#15 Picloram

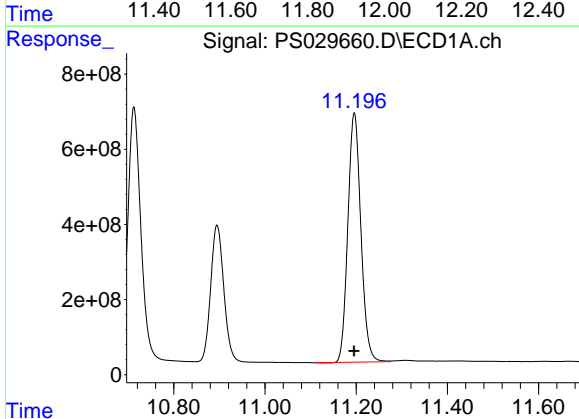
R.T.: 10.713 min  
 Delta R.T.: 0.000 min  
 Response: 14447241965  
 Conc: 951.45 ng/ml

Instrument :  
 ECD\_S  
 ClientSampleId :



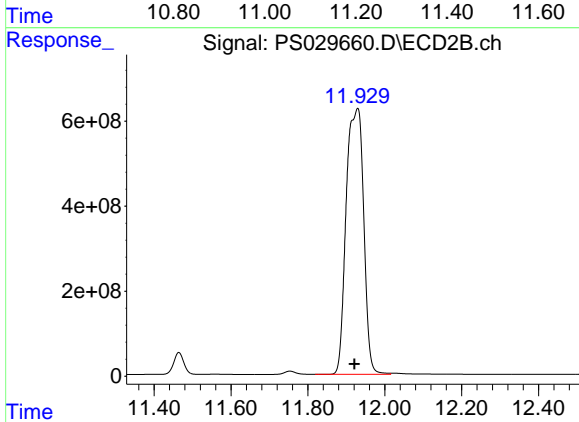
#15 Picloram

R.T.: 11.929 min  
 Delta R.T.: 0.000 min  
 Response: 19672248700  
 Conc: 1774.39 ng/ml



#16 DCPA

R.T.: 11.196 min  
 Delta R.T.: 0.000 min  
 Response: 13124092426  
 Conc: 953.03 ng/ml



#16 DCPA

R.T.: 11.929 min  
 Delta R.T.: 0.009 min  
 Response: 19672248700  
 Conc: 1957.41 ng/ml