

Data Path : Z:\pestpcbsrv\HPCHEM1\ECD\_S\Data\PS040225\  
 Data File : PS029661-1.D  
 Signal(s) : Signal #1: ECD1A.ch Signal #2: ECD2B.ch  
 Acq On : 02 Apr 2025 20:44  
 Operator : AR\AJ  
 Sample : HSTDICC1500  
 Misc :  
 ALS Vial : 12 Sample Multiplier: 1

Instrument :  
 ECD\_S  
 ClientSampleId :  
 HSTDICC1500

Integration File signal 1: autoint1.e  
 Integration File signal 2: autoint2.e  
 Quant Time: Apr 02 21:51:14 2025  
 Quant Method : Z:\pestpcbsrv\HPCHEM1\ECD\_S\Method\PS040225.M  
 Quant Title : 8080.M  
 QLast Update : Wed Apr 02 21:45:08 2025  
 Response via : Initial Calibration  
 Integrator: ChemStation

Volume Inj. : 1 µl  
 Signal #1 Phase : ZB-MR2 Signal #2 Phase: ZB-MR2  
 Signal #1 Info : 30M x 0.32mm x0.5 Signal #2 Info : 30M x 0.32mm x 0.25µm

Compound	RT#1	RT#2	Resp#1	Resp#2	ng/ml	ng/ml
-----						
System Monitoring Compounds						
4) S 2,4-DCAA	6.962	7.475	2841.0E6	981.8E6	1435.303	1487.406
Target Compounds						
1) T Dalapon	2.462	2.532	4108.4E6	1942.9E6	1258.290	1266.710
2) T 3,5-DICHL...	6.164	6.469	3928.4E6	1296.2E6	1335.806	1381.746
3) T 4-Nitroph...	6.752	7.009	1875.7E6	929.8E6	1377.303	1360.341
5) T DICAMBA	7.139	7.661	10886.5E6	5336.9E6	1314.829	1461.273
6) T MCPP	7.321	7.771	837.1E6	239.9E6	151.995	136.979
7) T MCPA	7.464	8.003	1077.4E6	321.6E6	146.013	141.540
8) T DICHLORPROP	7.821	8.356	2998.8E6	1359.0E6	1449.942	1501.547
9) T 2,4-D	8.041	8.670	3352.7E6	1534.4E6	1478.541	1529.798
10) T Pentachlo...	8.320	9.173	41860.3E6	24798.8E6	1439.850	1399.475
11) T 2,4,5-TP ...	8.887	9.551	15973.5E6	10314.3E6	1411.040	1461.696
12) T 2,4,5-T	9.169	9.956	15670.7E6	9380.7E6	1384.705	1419.436
13) T 2,4-DB	9.729	10.514	2397.1E6	1045.2E6	1276.563	1461.825
14) T DINOSEB	10.894	10.886	11584.2E6	7136.0E6	1396.490	1440.994
15) T Picloram	10.712	11.928	21908.2E6	29949.8E6	1442.814	2701.399 #
16) T DCPA	11.195	11.928	19405.2E6	29949.8E6	1409.141	2980.045 #

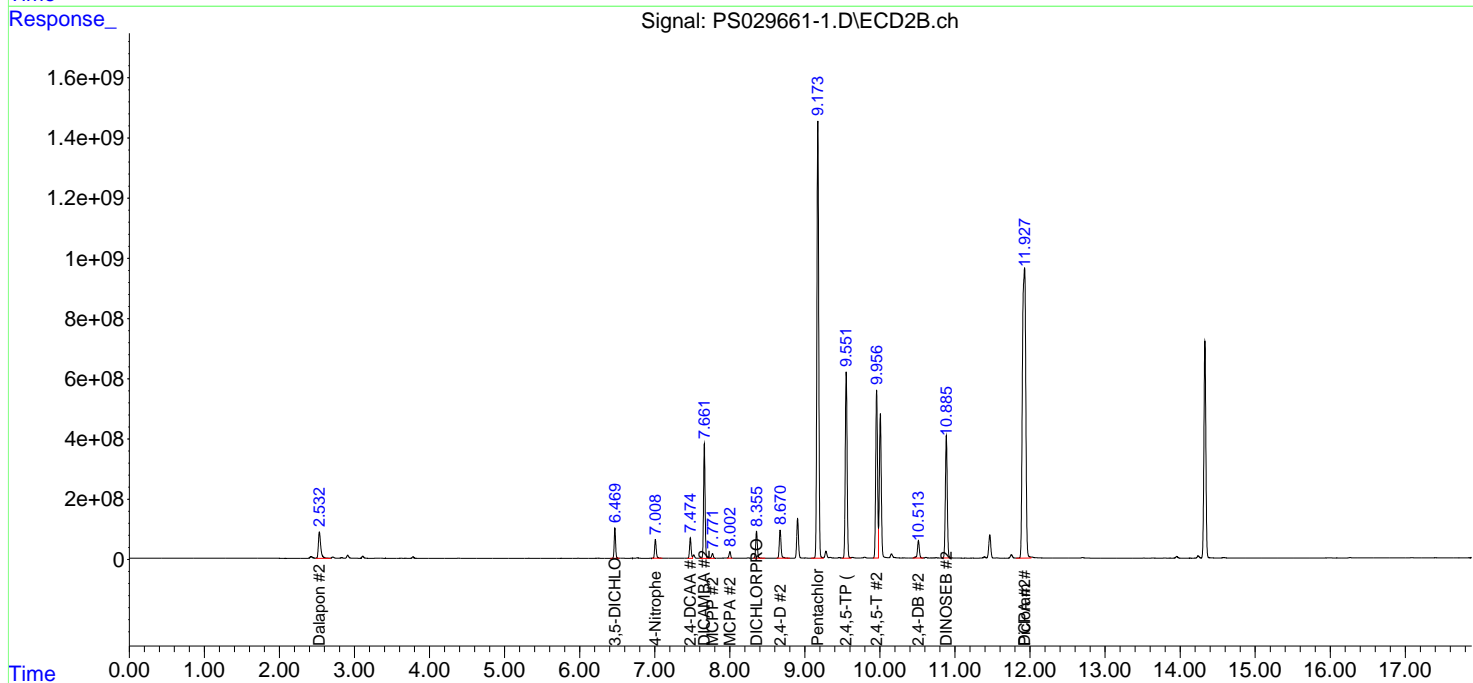
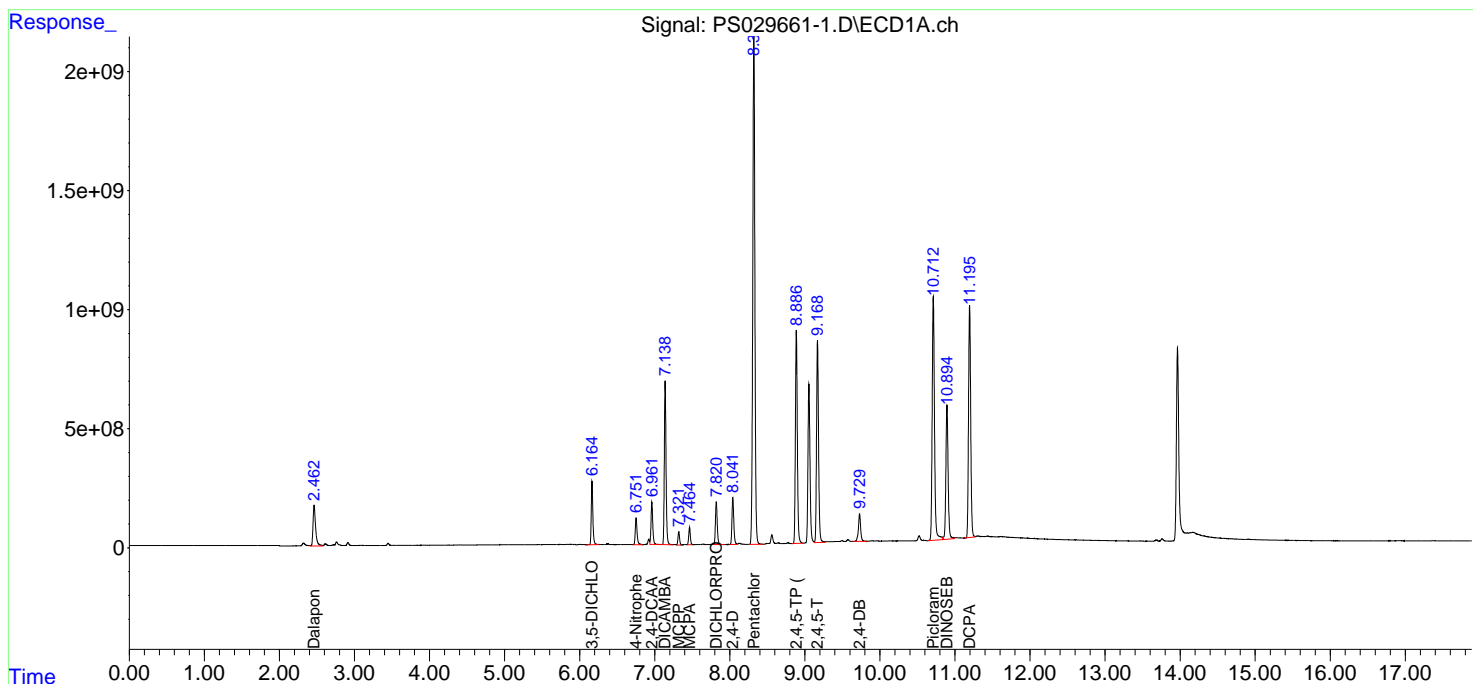
(f)=RT Delta > 1/2 Window (#)=Amounts differ by > 25% (m)=manual int.

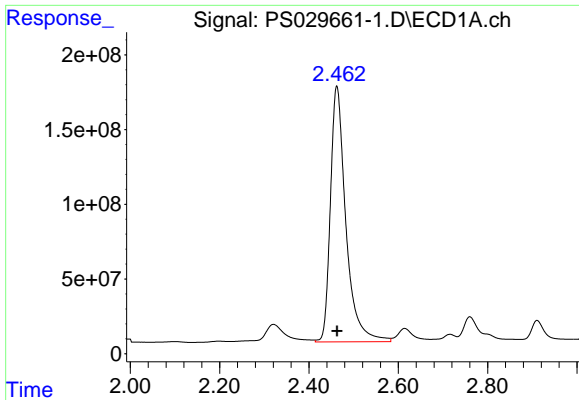
Data Path : Z:\pestpcbsrv\HPCHEM1\ECD\_S\Data\PS040225\  
 Data File : PS029661-1.D  
 Signal(s) : Signal #1: ECD1A.ch Signal #2: ECD2B.ch  
 Acq On : 02 Apr 2025 20:44  
 Operator : AR\AJ  
 Sample : HSTDICC1500  
 Misc :  
 ALS Vial : 12 Sample Multiplier: 1

Instrument :  
 ECD\_S  
 ClientSampleId :  
 HSTDICC1500

Integration File signal 1: autoint1.e  
 Integration File signal 2: autoint2.e  
 Quant Time: Apr 02 21:51:14 2025  
 Quant Method : Z:\pestpcbsrv\HPCHEM1\ECD\_S\Method\PS040225.M  
 Quant Title : 8080.M  
 QLast Update : Wed Apr 02 21:45:08 2025  
 Response via : Initial Calibration  
 Integrator: ChemStation

Volume Inj. : 1 µl  
 Signal #1 Phase : ZB-MR1 Signal #2 Phase: ZB-MR2  
 Signal #1 Info : 30M x 0.32mm x0.5 Signal #2 Info : 30M x 0.32mm x 0.25µm

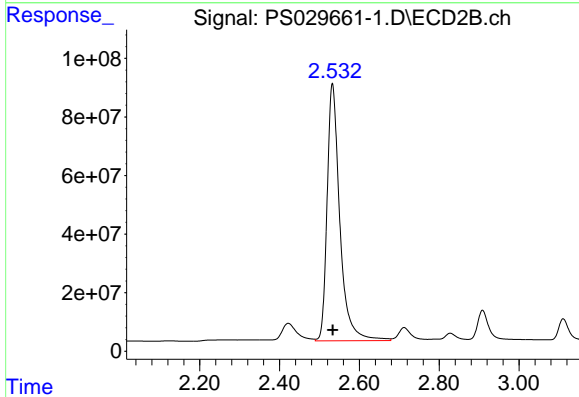




#1 Dalapon

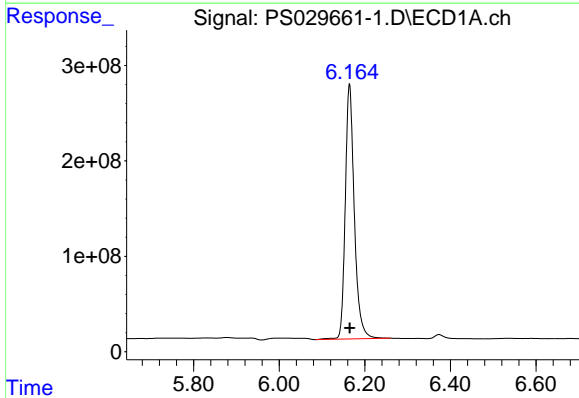
R.T.: 2.462 min  
 Delta R.T.: 0.000 min  
 Response: 4108358980  
 Conc: 1258.29 ng/ml

Instrument :  
 ECD\_S  
 ClientSampleId :  
 HSTDICC1500



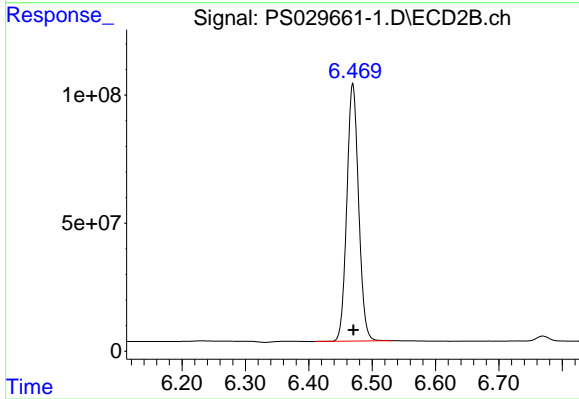
#1 Dalapon

R.T.: 2.532 min  
 Delta R.T.: 0.000 min  
 Response: 1942871242  
 Conc: 1266.71 ng/ml



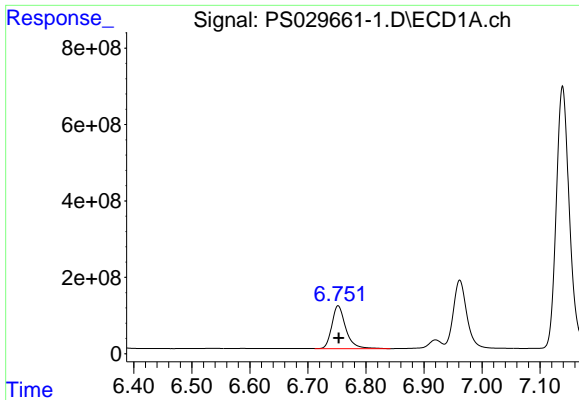
#2 3,5-DICHLOROBENZOIC ACID

R.T.: 6.164 min  
 Delta R.T.: 0.000 min  
 Response: 3928433575  
 Conc: 1335.81 ng/ml



#2 3,5-DICHLOROBENZOIC ACID

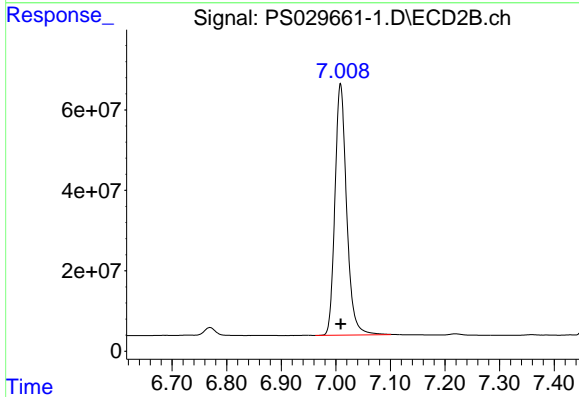
R.T.: 6.469 min  
 Delta R.T.: 0.000 min  
 Response: 1296248758  
 Conc: 1381.75 ng/ml



#3 4-Nitrophenol

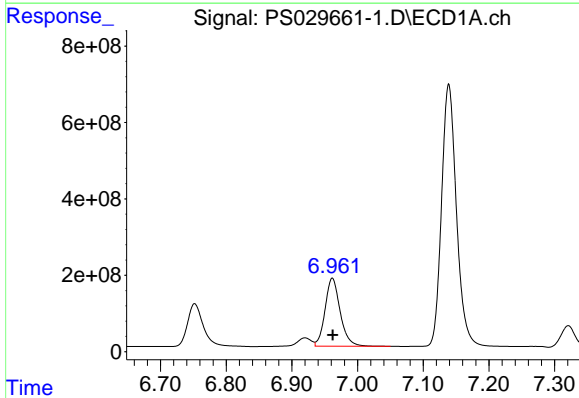
R.T.: 6.752 min  
 Delta R.T.: 0.000 min  
 Response: 1875650660  
 Conc: 1377.30 ng/ml

Instrument :  
 ECD\_S  
 ClientSampleId :  
 HSTDICC1500



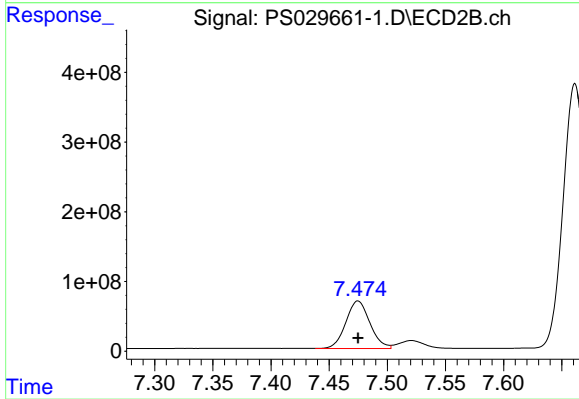
#3 4-Nitrophenol

R.T.: 7.009 min  
 Delta R.T.: 0.000 min  
 Response: 929783256  
 Conc: 1360.34 ng/ml



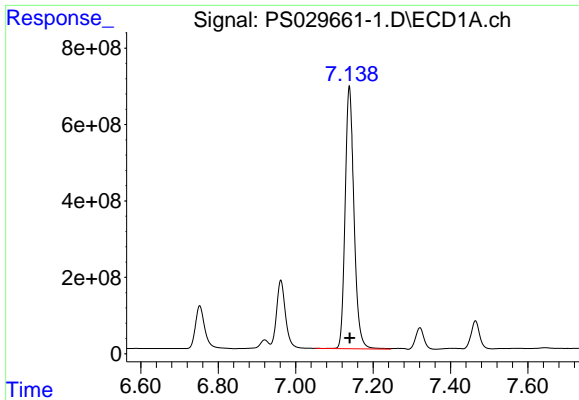
#4 2,4-DCAA

R.T.: 6.962 min  
 Delta R.T.: 0.000 min  
 Response: 2840950026  
 Conc: 1435.30 ng/ml



#4 2,4-DCAA

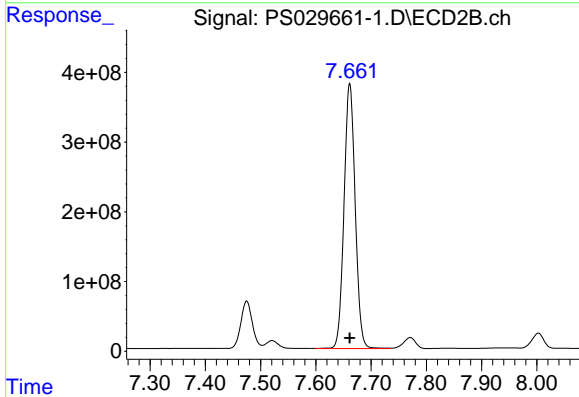
R.T.: 7.475 min  
 Delta R.T.: 0.000 min  
 Response: 981839106  
 Conc: 1487.41 ng/ml



#5 DICAMBA

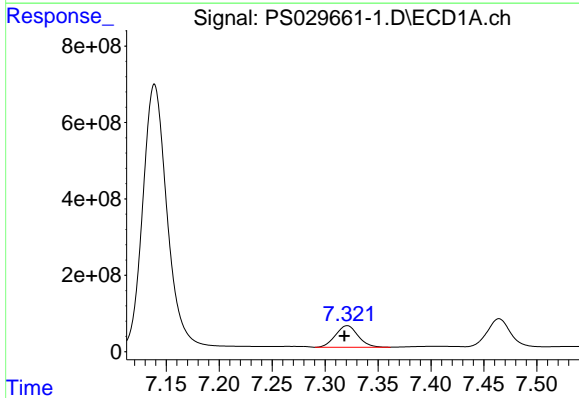
R.T.: 7.139 min  
 Delta R.T.: 0.000 min  
 Response: 10886487221  
 Conc: 1314.83 ng/m

Instrument :  
 ECD\_S  
 ClientSampleId :  
 HSTDICC1500



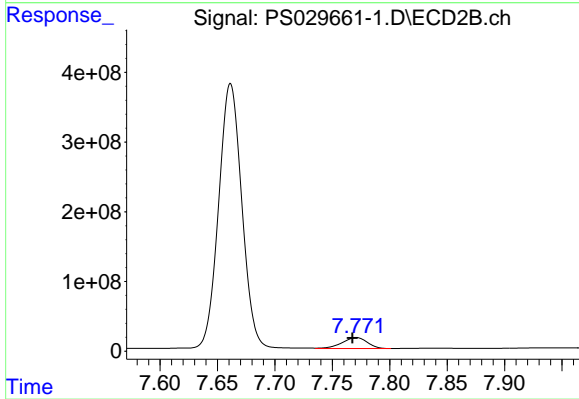
#5 DICAMBA

R.T.: 7.661 min  
 Delta R.T.: 0.000 min  
 Response: 5336929441  
 Conc: 1461.27 ng/ml



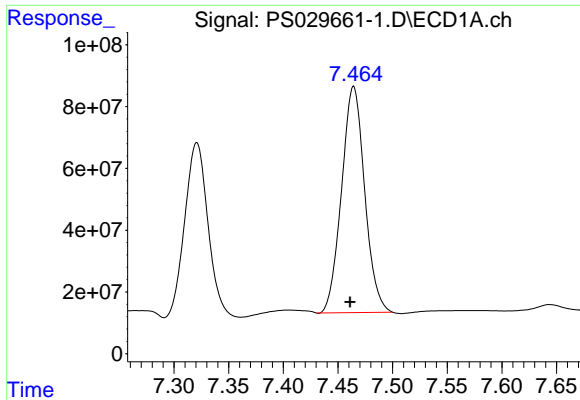
#6 MCP

R.T.: 7.321 min  
 Delta R.T.: 0.003 min  
 Response: 837102081  
 Conc: 152.00 ug/ml



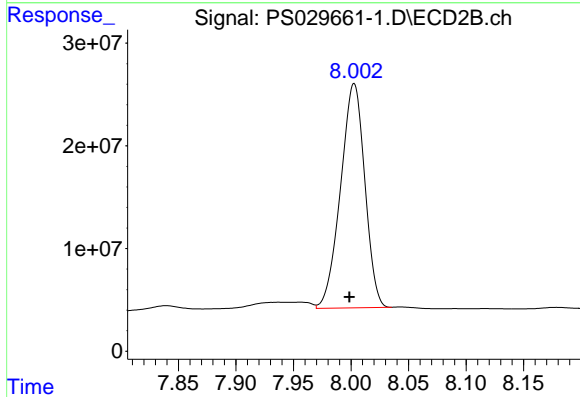
#6 MCP

R.T.: 7.771 min  
 Delta R.T.: 0.003 min  
 Response: 239877882  
 Conc: 136.98 ug/ml

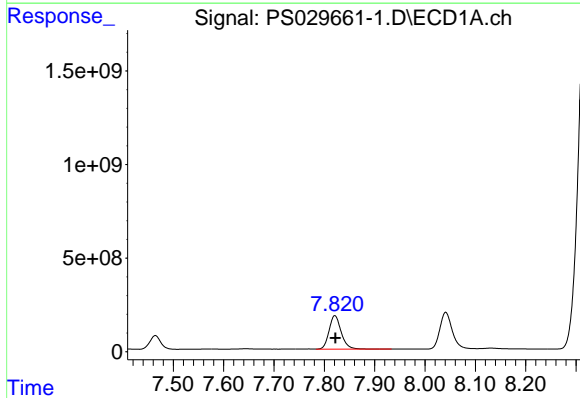


#7 MCPA  
 R.T.: 7.464 min  
 Delta R.T.: 0.003 min  
 Response: 1077350418  
 Conc: 146.01 ug/ml

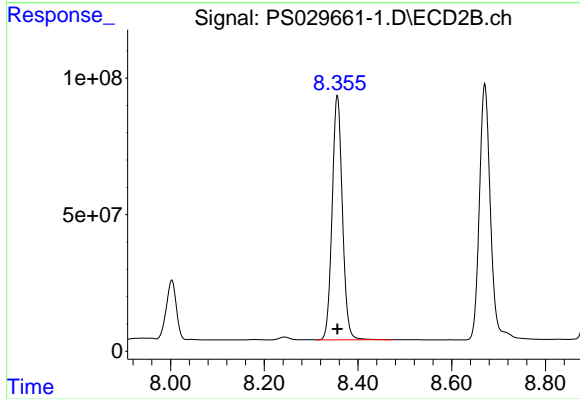
Instrument :  
 ECD\_S  
 ClientSampleId :  
 HSTDICC1500



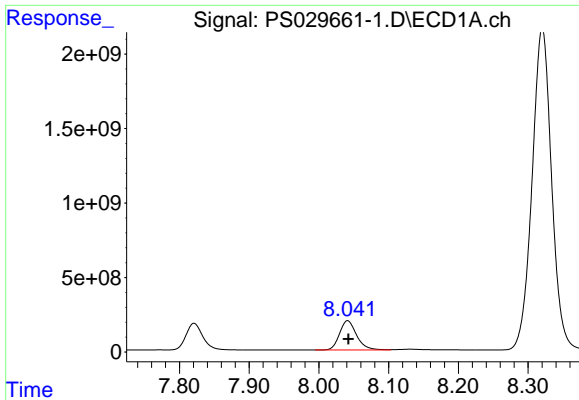
#7 MCPA  
 R.T.: 8.003 min  
 Delta R.T.: 0.004 min  
 Response: 321610430  
 Conc: 141.54 ug/ml



#8 DICHLORPROP  
 R.T.: 7.821 min  
 Delta R.T.: -0.001 min  
 Response: 2998787481  
 Conc: 1449.94 ng/ml



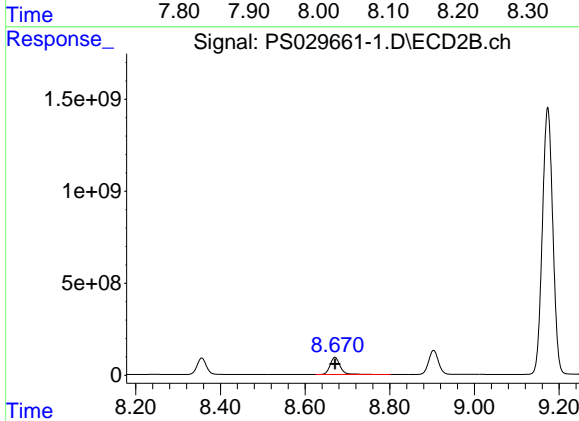
#8 DICHLORPROP  
 R.T.: 8.356 min  
 Delta R.T.: 0.000 min  
 Response: 1358996852  
 Conc: 1501.55 ng/ml



#9 2,4-D

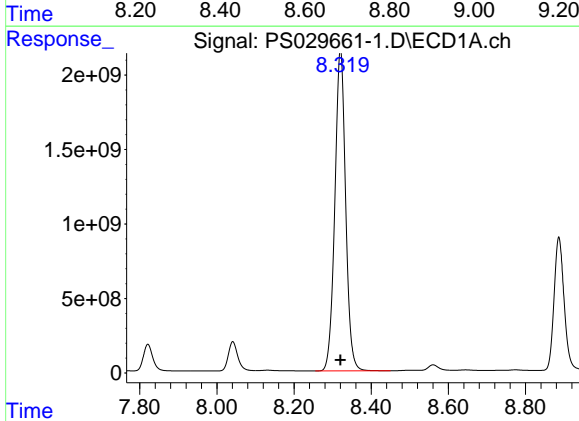
R.T.: 8.041 min  
 Delta R.T.: -0.001 min  
 Response: 3352707918  
 Conc: 1478.54 ng/ml

Instrument :  
 ECD\_S  
 ClientSampleId :  
 HSTDICC1500



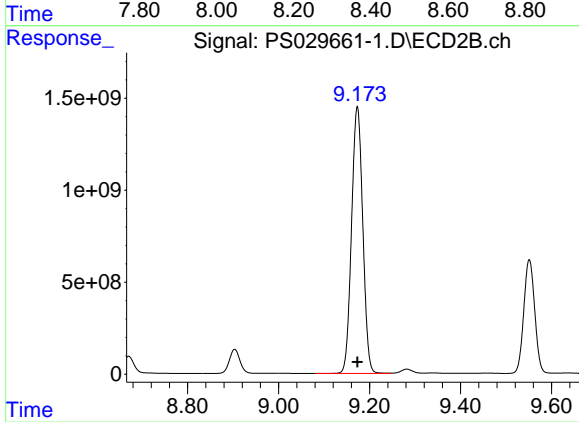
#9 2,4-D

R.T.: 8.670 min  
 Delta R.T.: 0.000 min  
 Response: 1534428295  
 Conc: 1529.80 ng/ml



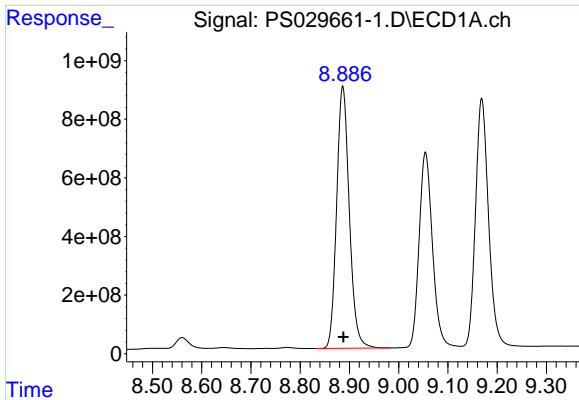
#10 Pentachlorophenol

R.T.: 8.320 min  
 Delta R.T.: 0.000 min  
 Response: 41860303298  
 Conc: 1439.85 ng/ml



#10 Pentachlorophenol

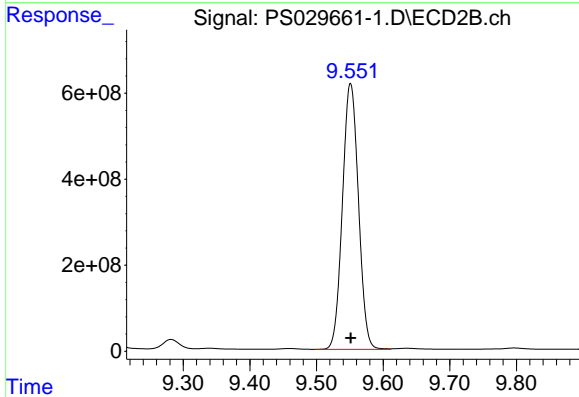
R.T.: 9.173 min  
 Delta R.T.: 0.000 min  
 Response: 24798795122  
 Conc: 1399.48 ng/ml



#11 2,4,5-TP (SILVEX)

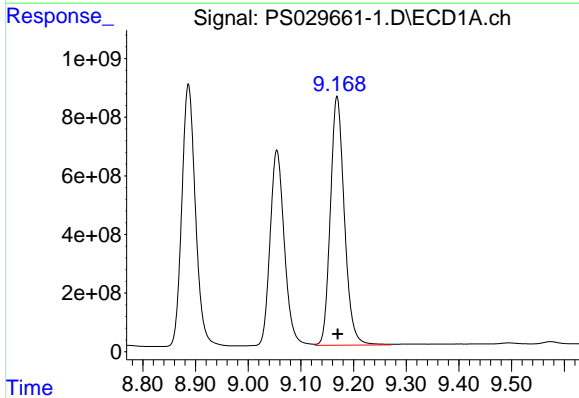
R.T.: 8.887 min  
 Delta R.T.: -0.001 min  
 Response: 15973508319  
 Conc: 1411.04 ng/m

Instrument :  
 ECD\_S  
 ClientSampleId :  
 HSTDICC1500



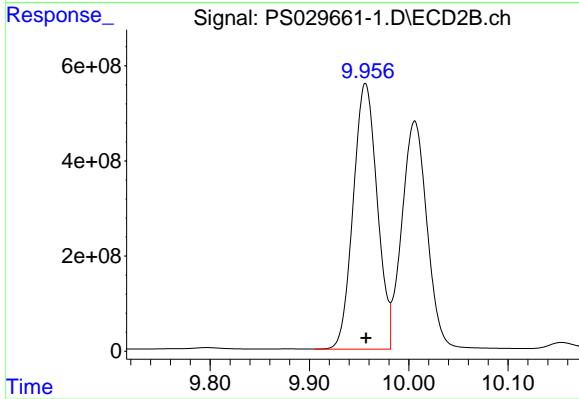
#11 2,4,5-TP (SILVEX)

R.T.: 9.551 min  
 Delta R.T.: 0.000 min  
 Response: 10314285572  
 Conc: 1461.70 ng/ml



#12 2,4,5-T

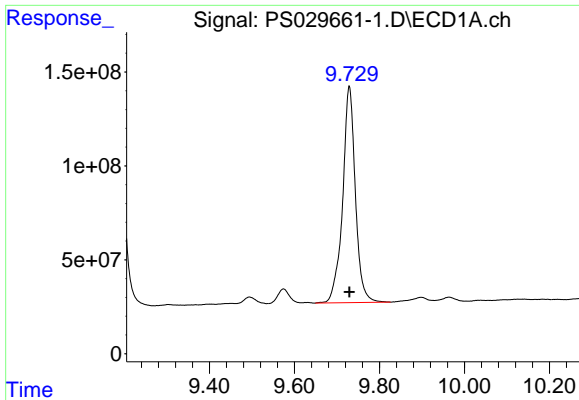
R.T.: 9.169 min  
 Delta R.T.: -0.001 min  
 Response: 15670680767  
 Conc: 1384.71 ng/ml



#12 2,4,5-T

R.T.: 9.956 min  
 Delta R.T.: 0.000 min  
 Response: 9380678174  
 Conc: 1419.44 ng/ml

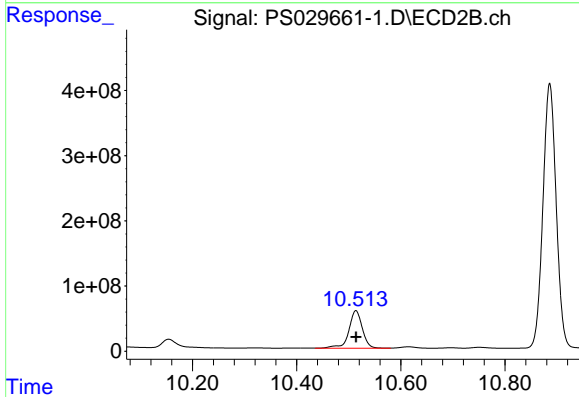




#13 2,4-DB

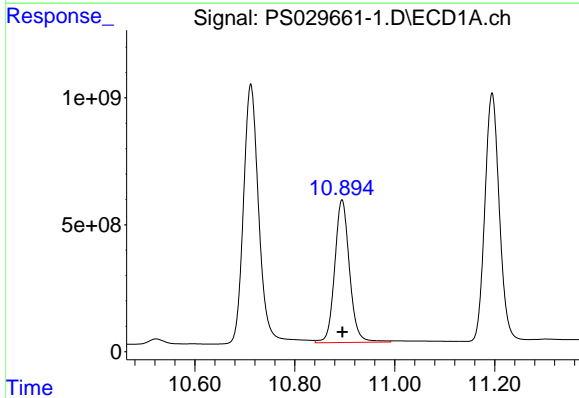
R.T.: 9.729 min  
 Delta R.T.: 0.000 min  
 Response: 2397133404  
 Conc: 1276.56 ng/ml

Instrument :  
 ECD\_S  
 ClientSampleId :  
 HSTDICC1500



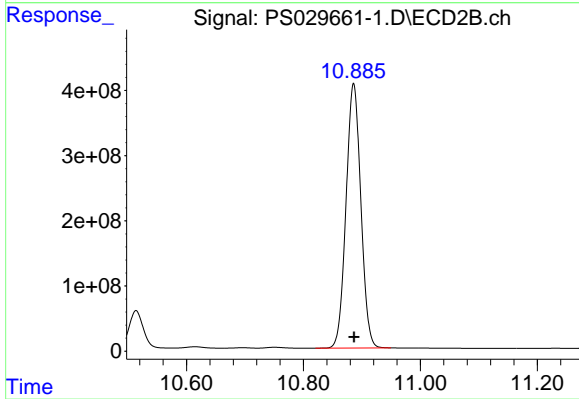
#13 2,4-DB

R.T.: 10.514 min  
 Delta R.T.: 0.000 min  
 Response: 1045195523  
 Conc: 1461.83 ng/ml



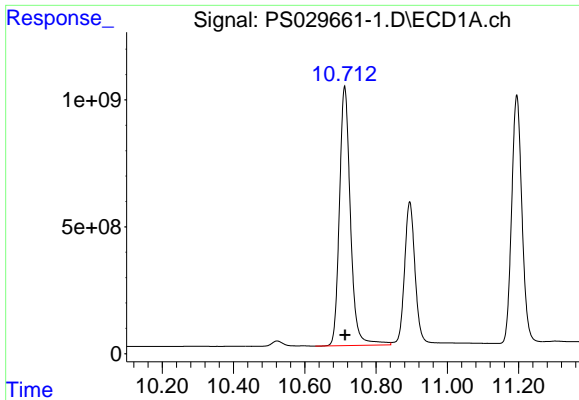
#14 DINOSEB

R.T.: 10.894 min  
 Delta R.T.: 0.000 min  
 Response: 11584240374  
 Conc: 1396.49 ng/ml



#14 DINOSEB

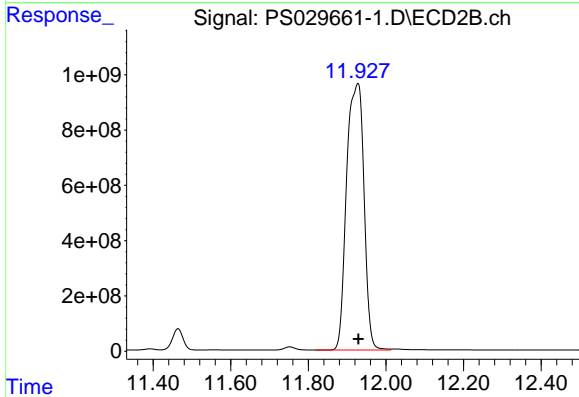
R.T.: 10.886 min  
 Delta R.T.: 0.000 min  
 Response: 7136024947  
 Conc: 1440.99 ng/ml



#15 Picloram

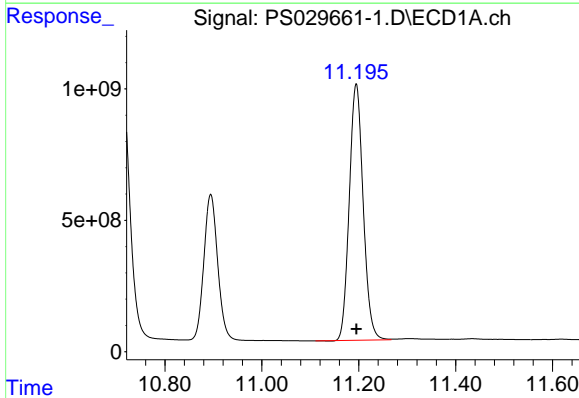
R.T.: 10.712 min  
 Delta R.T.: -0.001 min  
 Response: 21908246614  
 Conc: 1442.81 ng/m

Instrument :  
 ECD\_S  
 ClientSampleId :  
 HSTDICC1500



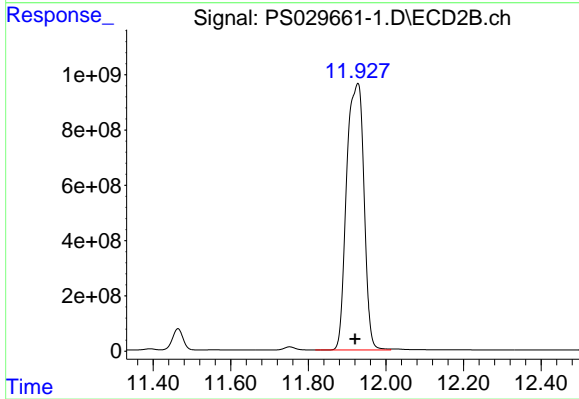
#15 Picloram

R.T.: 11.928 min  
 Delta R.T.: -0.002 min  
 Response: 29949844686  
 Conc: 2701.40 ng/ml



#16 DCPA

R.T.: 11.195 min  
 Delta R.T.: 0.000 min  
 Response: 19405207559  
 Conc: 1409.14 ng/ml



#16 DCPA

R.T.: 11.928 min  
 Delta R.T.: 0.007 min  
 Response: 29949844686  
 Conc: 2980.05 ng/ml