

Data Path : Z:\pestpcbsrv\HPCHEM1\ECD_S\Data\PS040225\
 Data File : PS029662.D
 Signal(s) : Signal #1: ECD1A.ch Signal #2: ECD2B.ch
 Acq On : 02 Apr 2025 21:08
 Operator : AR\AJ
 Sample : HSTDICV750
 Misc :
 ALS Vial : 13 Sample Multiplier: 1

Instrument :
 ECD_S
 ClientSampleId :

Integration File signal 1: autoint1.e
 Integration File signal 2: autoint2.e
 Quant Time: Apr 02 22:03:25 2025
 Quant Method : Z:\pestpcbsrv\HPCHEM1\ECD_S\Method\PS040225.M
 Quant Title : 8080.M
 QLast Update : Wed Apr 02 21:58:31 2025
 Response via : Initial Calibration
 Integrator: ChemStation

Volume Inj. : 1 µl
 Signal #1 Phase : ZB-MR2 Signal #2 Phase: ZB-MR2
 Signal #1 Info : 30M x 0.32mm x0.5 Signal #2 Info : 30M x 0.32mm x 0.25µm

Compound	RT#1	RT#2	Resp#1	Resp#2	ng/ml	ng/ml

System Monitoring Compounds						
4) S 2,4-DCAA	6.962	7.475	1488.1E6	495.2E6	729.897	726.673
Target Compounds						
1) T Dalapon	2.462	2.533	2235.4E6	1046.2E6	658.937	658.979
2) T 3,5-DICHL...	6.164	6.470	2066.5E6	655.4E6	687.055	678.831
3) T 4-Nitroph...	6.752	7.009	925.3E6	462.2E6	658.663	651.937
5) T DICAMBA	7.138	7.662	5917.4E6	2567.2E6	711.054	695.077
6) T MCPP	7.317	7.767	389.2E6	124.1E6	71.808	73.495
7) T MCPA	7.460	7.998	503.1E6	156.8E6	69.211	68.937
8) T DICHLORPROP	7.820	8.356	1479.6E6	637.9E6	672.721	660.267
9) T 2,4-D	8.041	8.671	1623.5E6	712.5E6	673.759	660.622
10) T Pentachlo...	8.319	9.172	20875.9E6	12660.3E6	686.594	706.183
11) T 2,4,5-TP ...	8.886	9.551	8159.0E6	5039.2E6	702.432	698.633
12) T 2,4,5-T	9.168	9.956	8127.8E6	4715.2E6	706.492	703.456
13) T 2,4-DB	9.728	10.513	1371.6E6	518.6E6	755.004	698.919
14) T DINOSEB	10.893	10.885	5769.0E6	3515.3E6	683.370	687.544
15) T Picloram	10.711	11.927	10870.4E6	14593.7E6	701.300	1245.045 #
16) T DCPA	11.194	11.927	10057.3E6	14593.7E6	720.120	1583.125 #

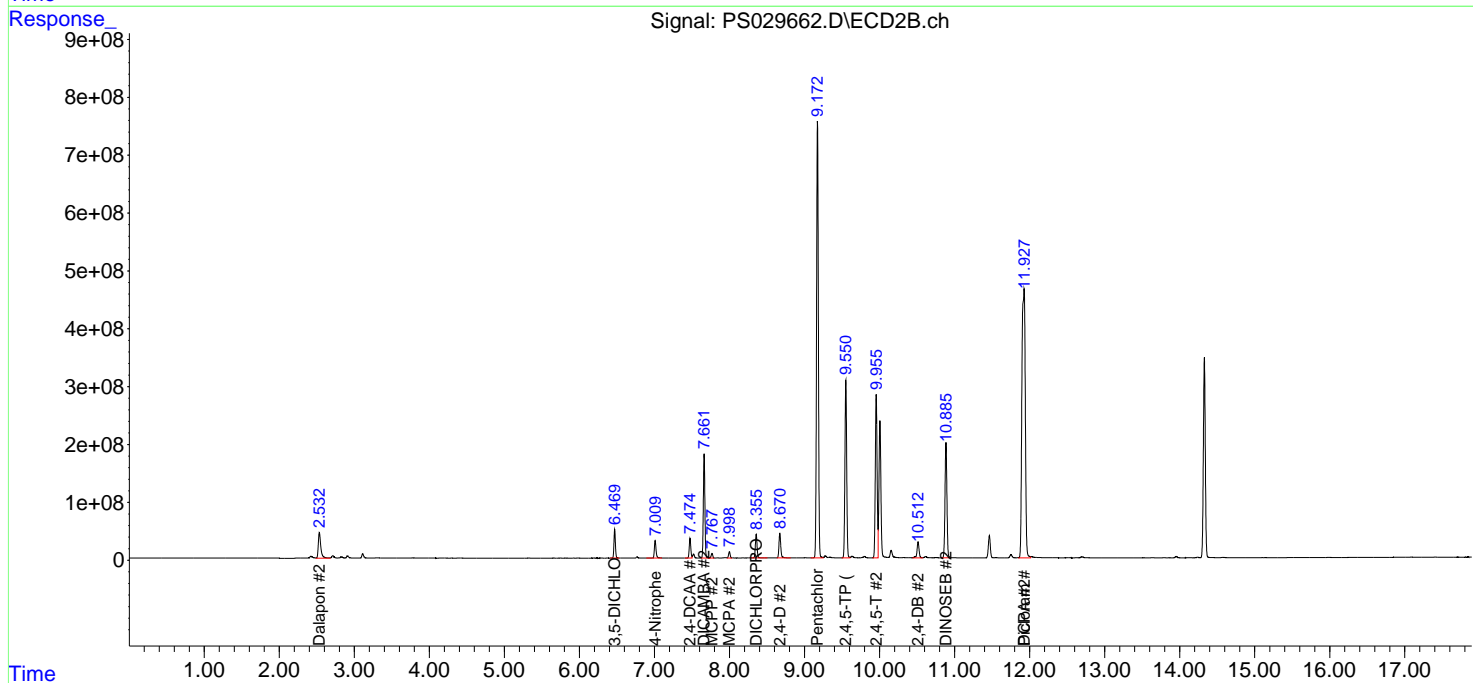
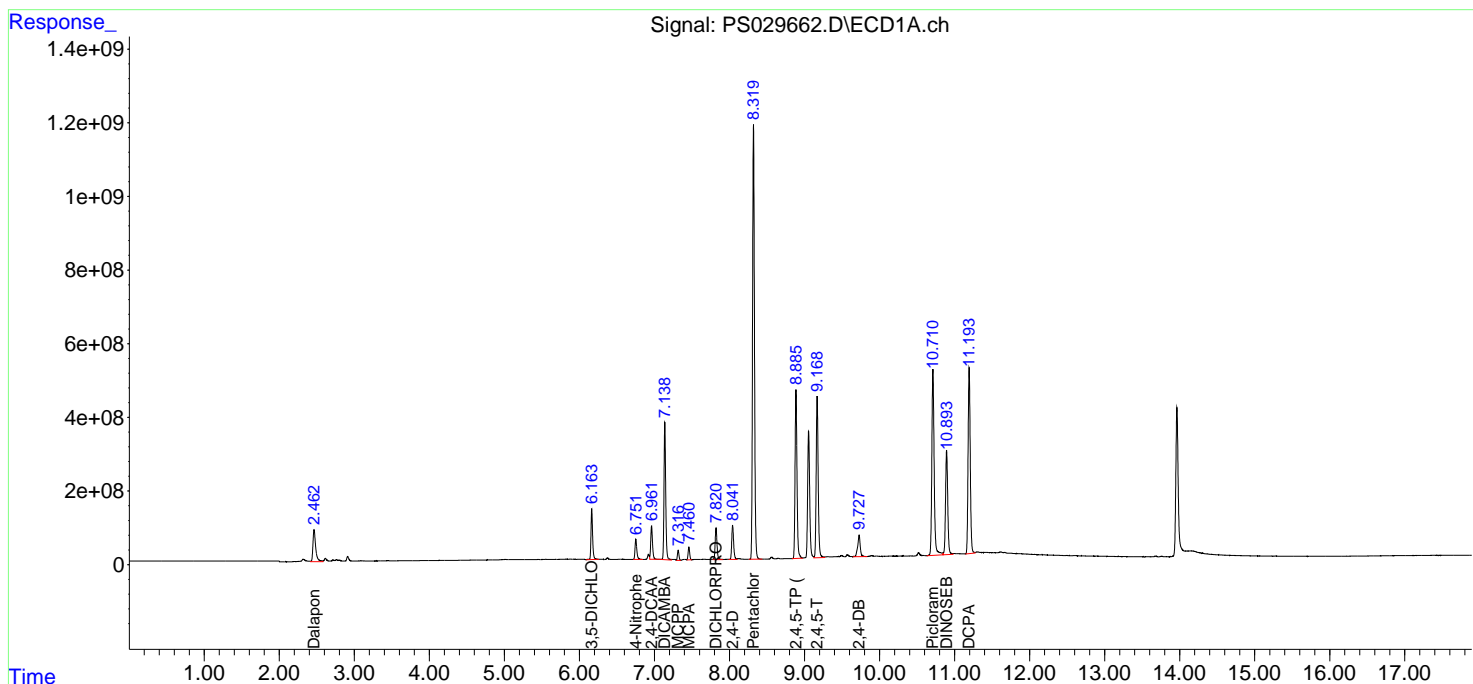
(f)=RT Delta > 1/2 Window (#)=Amounts differ by > 25% (m)=manual int.

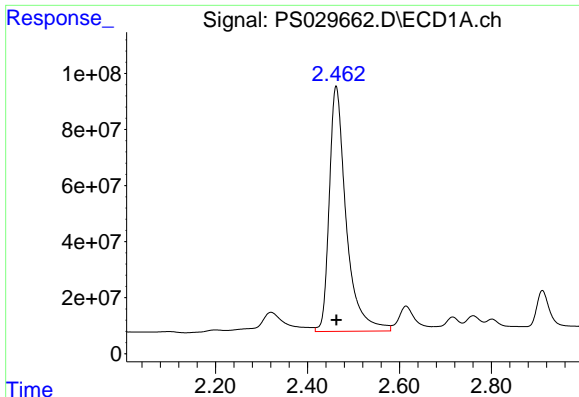
Data Path : Z:\pestpcbsrv\HPCHEM1\ECD_S\Data\PS040225\
 Data File : PS029662.D
 Signal(s) : Signal #1: ECD1A.ch Signal #2: ECD2B.ch
 Acq On : 02 Apr 2025 21:08
 Operator : AR\AJ
 Sample : HSTDICV750
 Misc :
 ALS Vial : 13 Sample Multiplier: 1

Instrument :
 ECD_S
 ClientSampleId :

Integration File signal 1: autoint1.e
 Integration File signal 2: autoint2.e
 Quant Time: Apr 02 22:03:25 2025
 Quant Method : Z:\pestpcbsrv\HPCHEM1\ECD_S\Method\PS040225.M
 Quant Title : 8080.M
 QLast Update : Wed Apr 02 21:58:31 2025
 Response via : Initial Calibration
 Integrator: ChemStation

Volume Inj. : 1 µl
 Signal #1 Phase : ZB-MR1 Signal #2 Phase: ZB-MR2
 Signal #1 Info : 30M x 0.32mm x0.5 Signal #2 Info : 30M x 0.32mm x 0.25µm

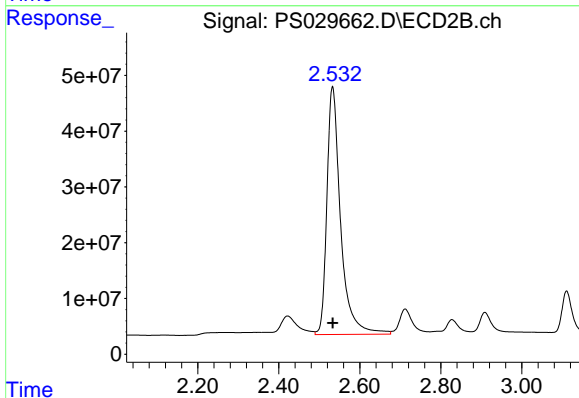




#1 Dalapon

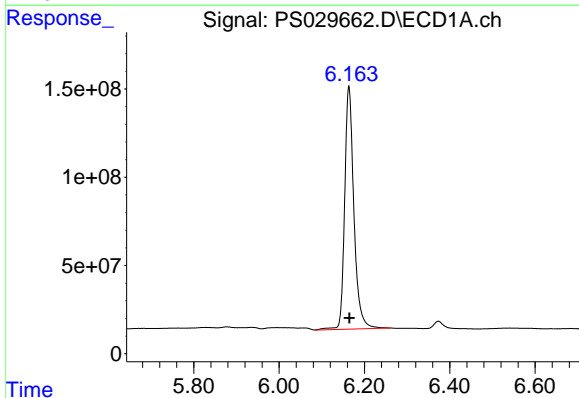
R.T.: 2.462 min
 Delta R.T.: 0.000 min
 Response: 2235374371
 Conc: 658.94 ng/ml

Instrument :
 ECD_S
 ClientSampleId :



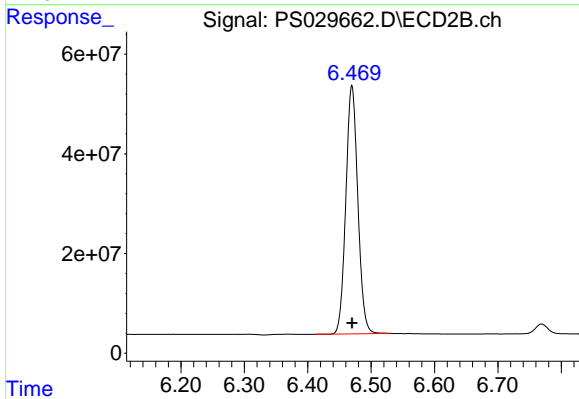
#1 Dalapon

R.T.: 2.533 min
 Delta R.T.: 0.000 min
 Response: 1046192814
 Conc: 658.98 ng/ml



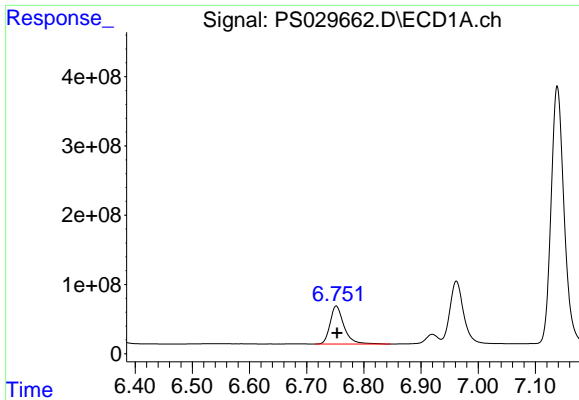
#2 3,5-DICHLOROBENZOIC ACID

R.T.: 6.164 min
 Delta R.T.: -0.001 min
 Response: 2066496416
 Conc: 687.06 ng/ml



#2 3,5-DICHLOROBENZOIC ACID

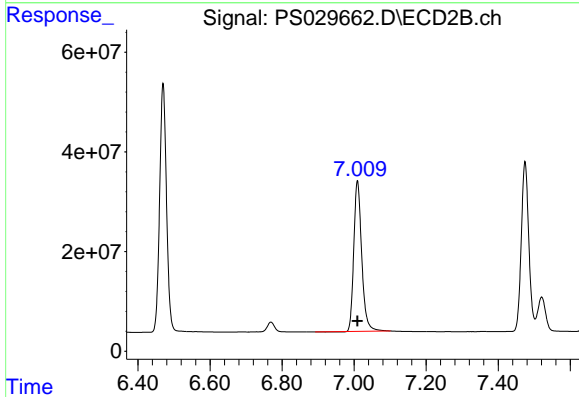
R.T.: 6.470 min
 Delta R.T.: 0.000 min
 Response: 655449920
 Conc: 678.83 ng/ml



#3 4-Nitrophenol

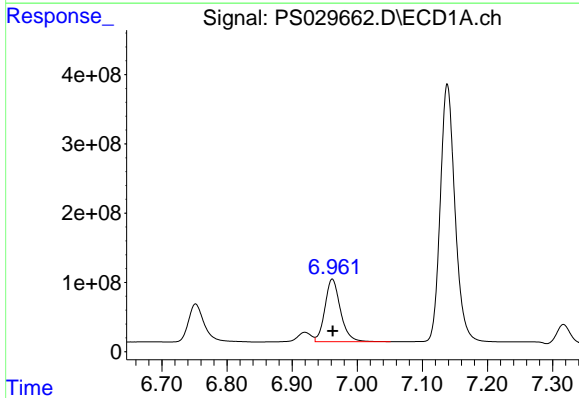
R.T.: 6.752 min
Delta R.T.: -0.001 min
Response: 925288528
Conc: 658.66 ng/ml

Instrument :
ECD_S
ClientSampleId :



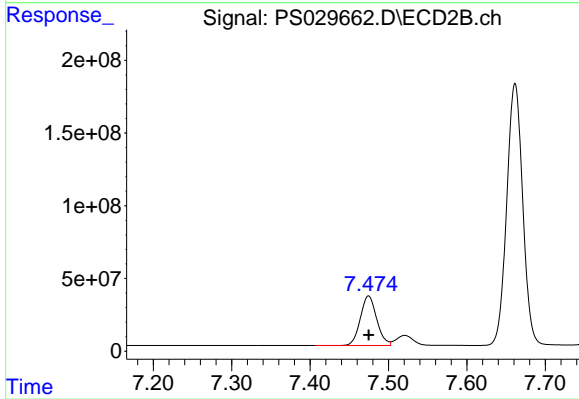
#3 4-Nitrophenol

R.T.: 7.009 min
Delta R.T.: 0.000 min
Response: 462222584
Conc: 651.94 ng/ml



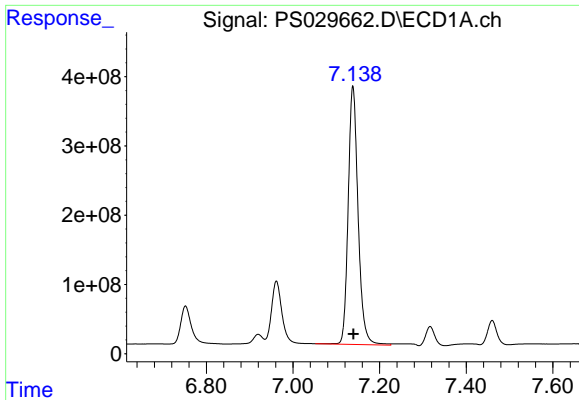
#4 2,4-DCAA

R.T.: 6.962 min
Delta R.T.: 0.000 min
Response: 1488137161
Conc: 729.90 ng/ml



#4 2,4-DCAA

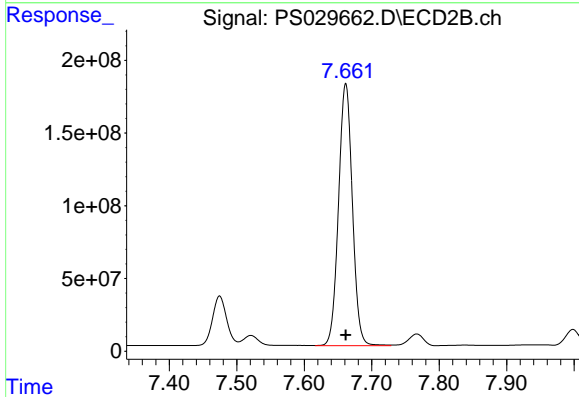
R.T.: 7.475 min
Delta R.T.: 0.000 min
Response: 495236948
Conc: 726.67 ng/ml



#5 DICAMBA

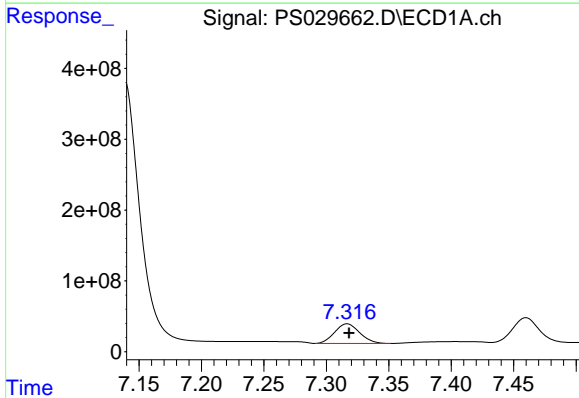
R.T.: 7.138 min
 Delta R.T.: -0.002 min
 Response: 5917352034
 Conc: 711.05 ng/ml

Instrument :
 ECD_S
 ClientSampleId :



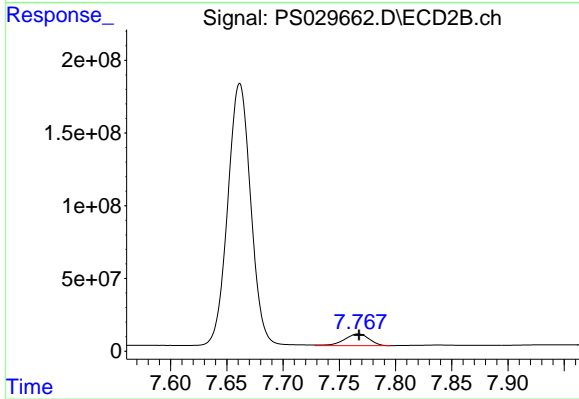
#5 DICAMBA

R.T.: 7.662 min
 Delta R.T.: 0.000 min
 Response: 2567174460
 Conc: 695.08 ng/ml



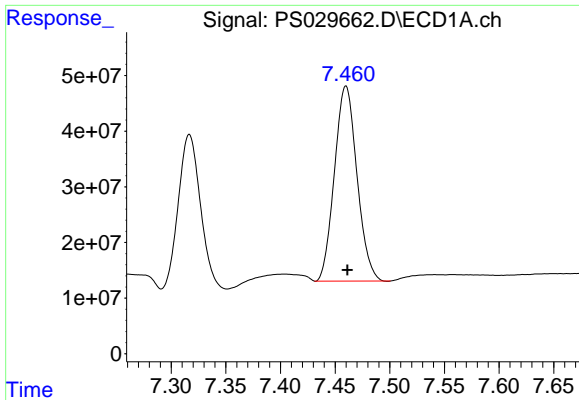
#6 MCP

R.T.: 7.317 min
 Delta R.T.: -0.002 min
 Response: 389187909
 Conc: 71.81 ug/ml



#6 MCP

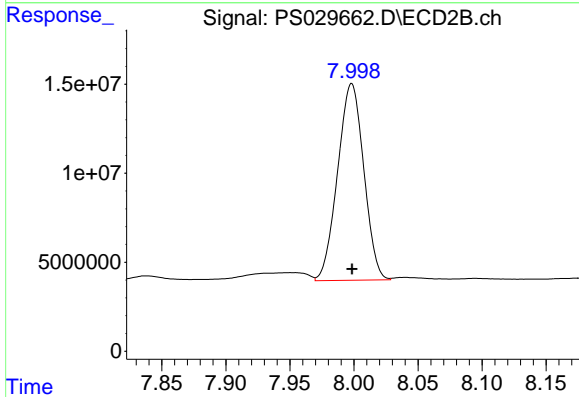
R.T.: 7.767 min
 Delta R.T.: 0.000 min
 Response: 124095343
 Conc: 73.50 ug/ml



#7 MCPA

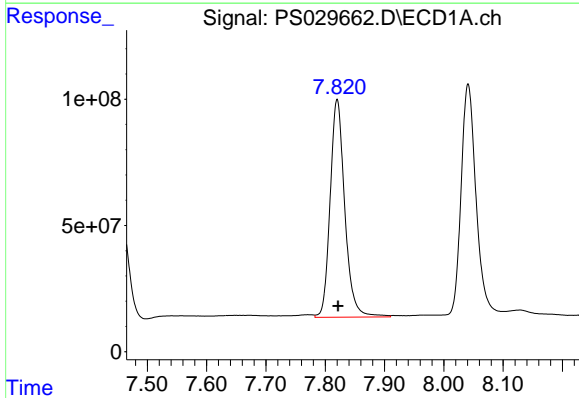
R.T.: 7.460 min
 Delta R.T.: -0.001 min
 Response: 503092637
 Conc: 69.21 ug/ml

Instrument :
 ECD_S
 ClientSampleId :



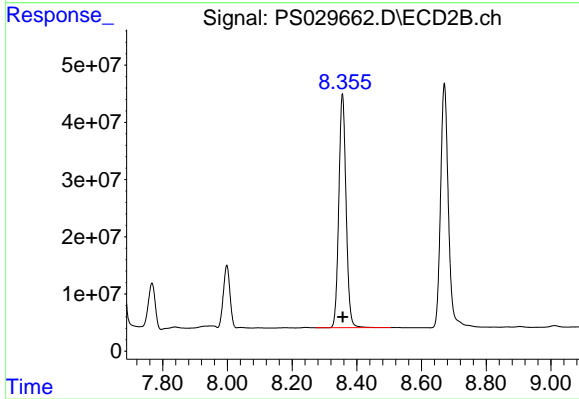
#7 MCPA

R.T.: 7.998 min
 Delta R.T.: 0.000 min
 Response: 156849034
 Conc: 68.94 ug/ml



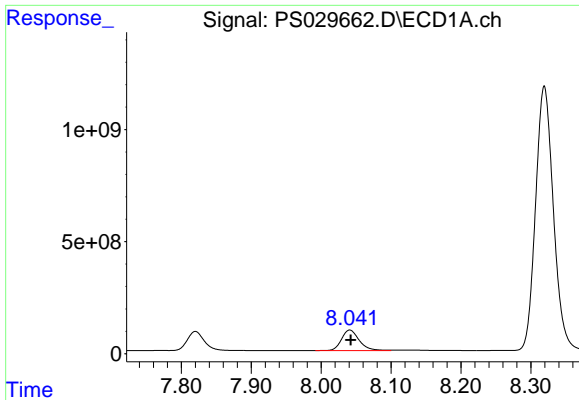
#8 DICHLORPROP

R.T.: 7.820 min
 Delta R.T.: -0.002 min
 Response: 1479607369
 Conc: 672.72 ng/ml



#8 DICHLORPROP

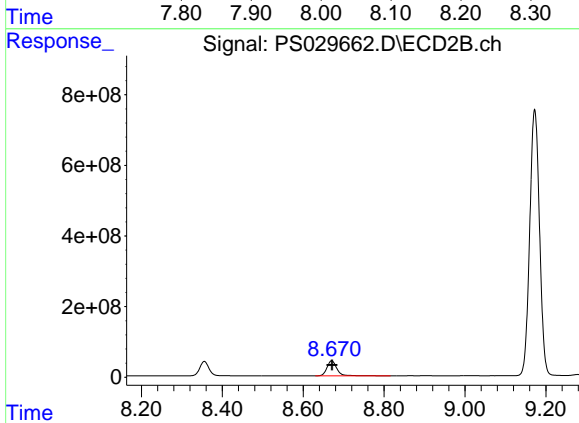
R.T.: 8.356 min
 Delta R.T.: 0.000 min
 Response: 637918234
 Conc: 660.27 ng/ml



#9 2,4-D

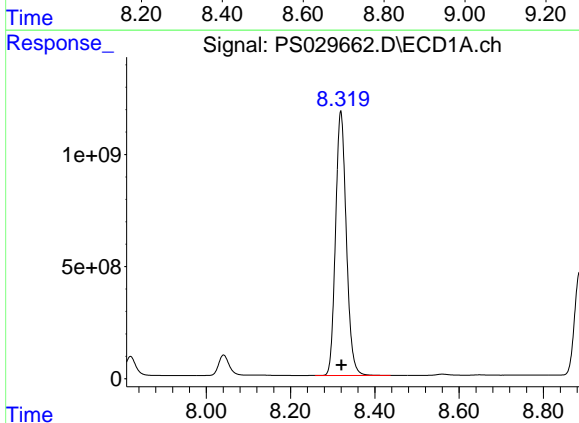
R.T.: 8.041 min
 Delta R.T.: -0.001 min
 Response: 1623483695
 Conc: 673.76 ng/ml

Instrument :
 ECD_S
 ClientSampleId :



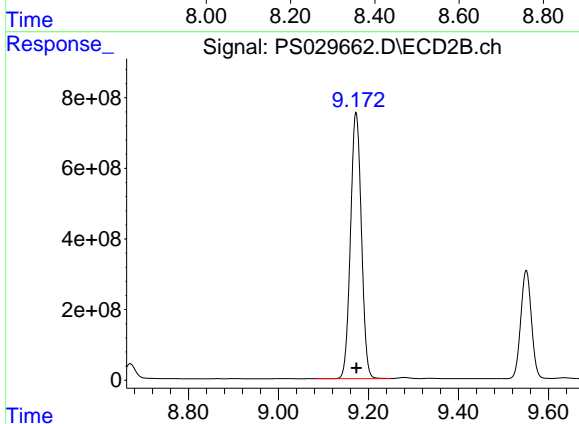
#9 2,4-D

R.T.: 8.671 min
 Delta R.T.: 0.000 min
 Response: 712457468
 Conc: 660.62 ng/ml



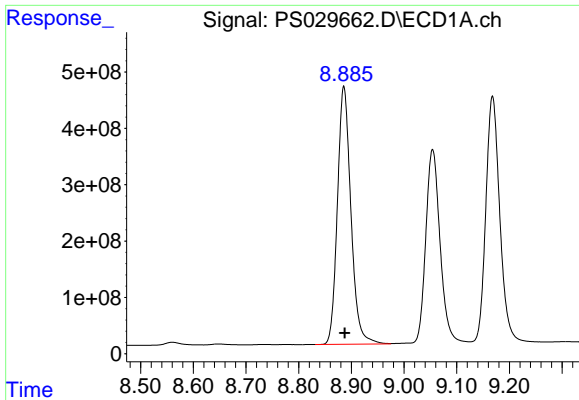
#10 Pentachlorophenol

R.T.: 8.319 min
 Delta R.T.: -0.001 min
 Response: 20875900740
 Conc: 686.59 ng/ml



#10 Pentachlorophenol

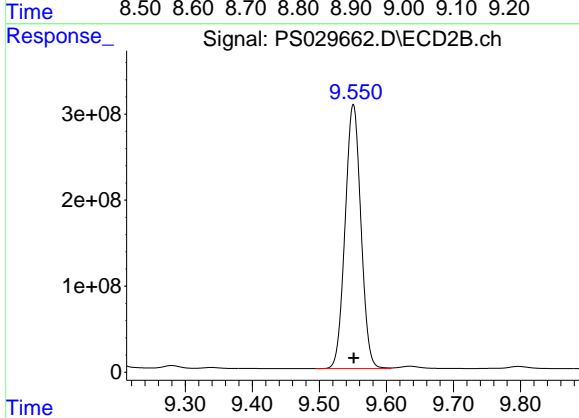
R.T.: 9.172 min
 Delta R.T.: 0.000 min
 Response: 12660253936
 Conc: 706.18 ng/ml



#11 2,4,5-TP (SILVEX)

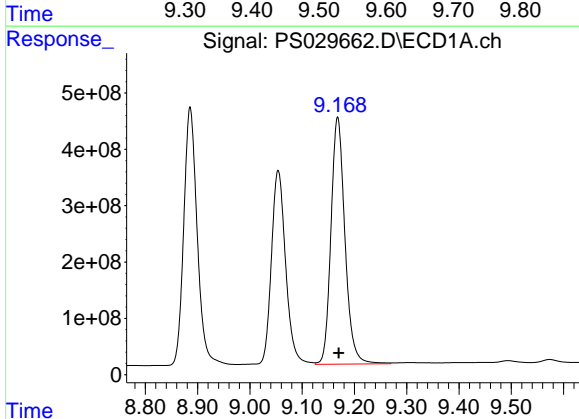
R.T.: 8.886 min
Delta R.T.: -0.002 min
Response: 8158997696
Conc: 702.43 ng/ml

Instrument :
ECD_S
ClientSampleId :



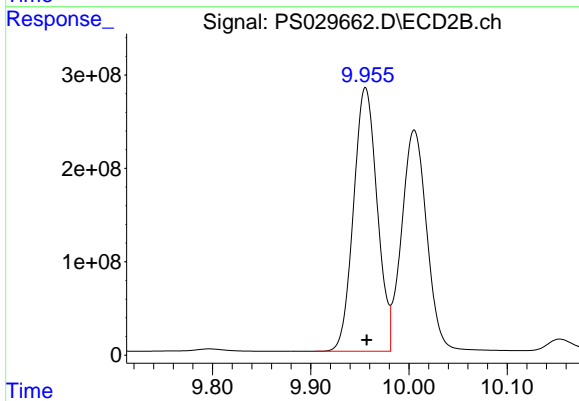
#11 2,4,5-TP (SILVEX)

R.T.: 9.551 min
Delta R.T.: 0.000 min
Response: 5039210277
Conc: 698.63 ng/ml



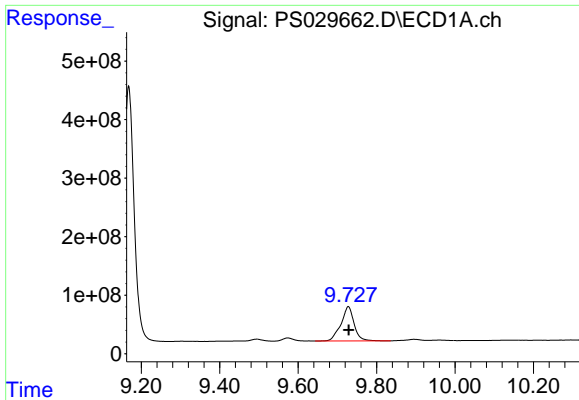
#12 2,4,5-T

R.T.: 9.168 min
Delta R.T.: -0.002 min
Response: 8127785727
Conc: 706.49 ng/ml



#12 2,4,5-T

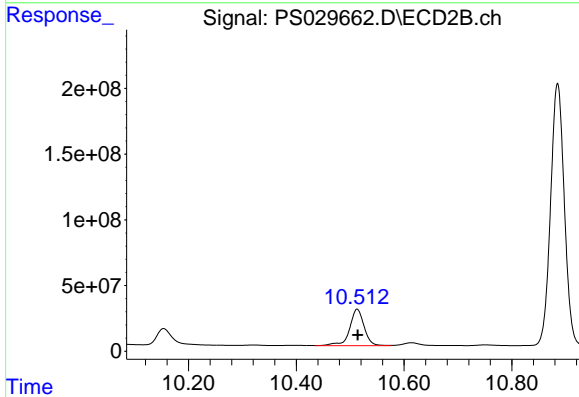
R.T.: 9.956 min
Delta R.T.: -0.001 min
Response: 4715155138
Conc: 703.46 ng/ml



#13 2,4-DB

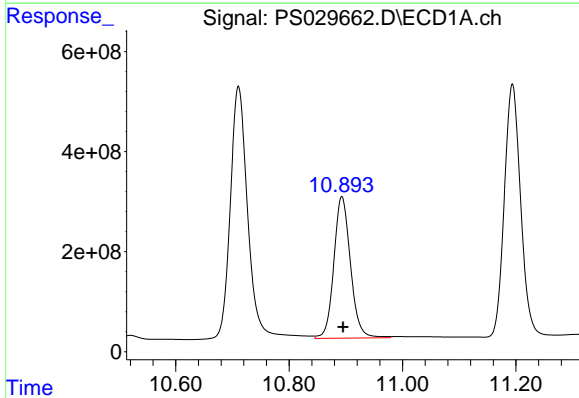
R.T.: 9.728 min
Delta R.T.: -0.002 min
Response: 1371649802
Conc: 755.00 ng/ml

Instrument :
ECD_S
ClientSampleId :



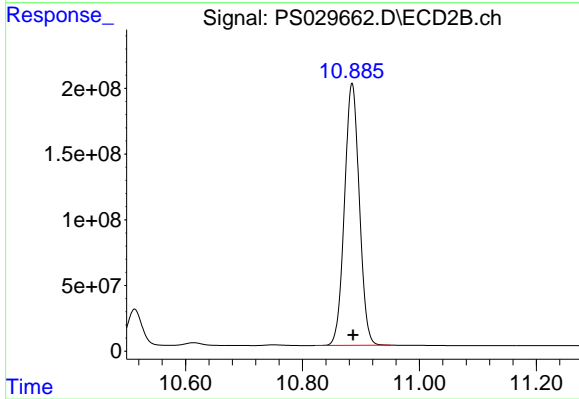
#13 2,4-DB

R.T.: 10.513 min
Delta R.T.: -0.001 min
Response: 518580510
Conc: 698.92 ng/ml



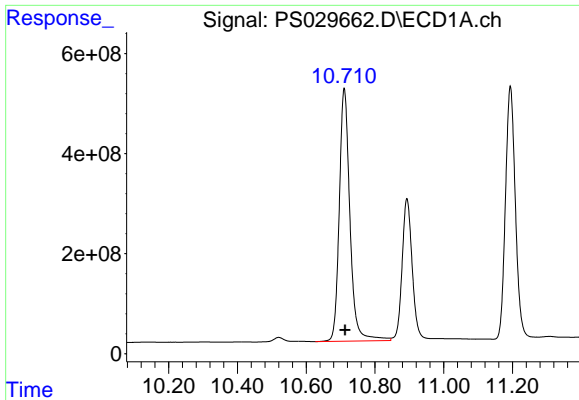
#14 DINOSEB

R.T.: 10.893 min
Delta R.T.: -0.002 min
Response: 5769035781
Conc: 683.37 ng/ml



#14 DINOSEB

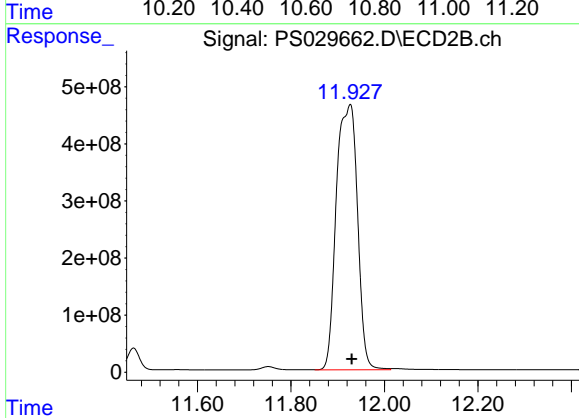
R.T.: 10.885 min
Delta R.T.: -0.002 min
Response: 3515274589
Conc: 687.54 ng/ml



#15 Picloram

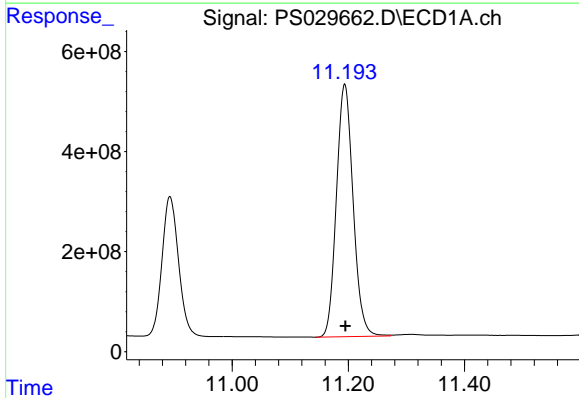
R.T.: 10.711 min
 Delta R.T.: -0.003 min
 Response: 10870425346
 Conc: 701.30 ng/ml

Instrument :
 ECD_S
 ClientSampleId :



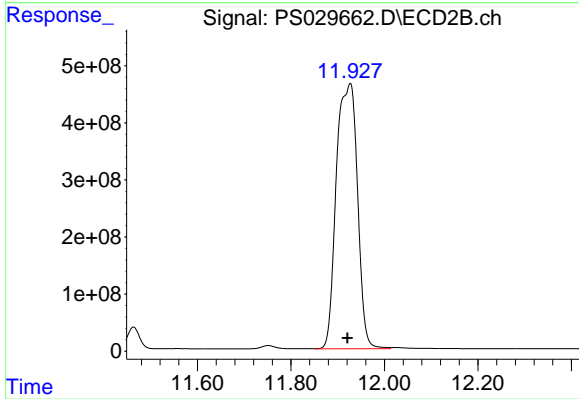
#15 Picloram

R.T.: 11.927 min
 Delta R.T.: -0.003 min
 Response: 14593728735
 Conc: 1245.05 ng/ml



#16 DCPA

R.T.: 11.194 min
 Delta R.T.: -0.002 min
 Response: 10057269810
 Conc: 720.12 ng/ml



#16 DCPA

R.T.: 11.927 min
 Delta R.T.: 0.006 min
 Response: 14593728735
 Conc: 1583.12 ng/ml