

Data Path : Z:\pestpcbsrv\HPCHEM1\ECD\_S\Data\PS040325\  
 Data File : PS029688.D  
 Signal(s) : Signal #1: ECD1A.ch Signal #2: ECD2B.ch  
 Acq On : 03 Apr 2025 19:59  
 Operator : AR\AJ  
 Sample : Q1680-01  
 Misc :  
 ALS Vial : 20 Sample Multiplier: 1

**Instrument :**  
 ECD\_S  
**ClientSampleId :**  
 TP-4

**Manual Integrations**  
**APPROVED**  
 Reviewed By :Abdul Mirza 04/04/2025  
 Supervised By :mohammad ahmed 04/05/2025

Integration File signal 1: autoint1.e  
 Integration File signal 2: autoint2.e  
 Quant Time: Apr 04 03:00:18 2025  
 Quant Method : Z:\pestpcbsrv\HPCHEM1\ECD\_S\Method\PS040225.M  
 Quant Title : 8080.M  
 QLast Update : Wed Apr 02 23:52:55 2025  
 Response via : Initial Calibration  
 Integrator: ChemStation

Volume Inj. : 1 µl  
 Signal #1 Phase : ZB-MR1 Signal #2 Phase: ZB-MR2  
 Signal #1 Info : 30M x 0.32mm x0.5 Signal #2 Info : 30M x 0.32mm x 0.25µm

Compound	RT#1	RT#2	Resp#1	Resp#2	ng/ml	ng/ml
-----						
System Monitoring Compounds						
4) S 2,4-DCAA	6.957	7.473	976.3E6	292.6E6	478.834m	429.315

Target Compounds

(f)=RT Delta > 1/2 Window (#)=Amounts differ by > 25% (m)=manual int.

Data Path : Z:\pestpcbsrv\HPCHEM1\ECD\_S\Data\PS040325\  
Data File : PS029688.D  
Signal(s) : Signal #1: ECD1A.ch Signal #2: ECD2B.ch  
Acq On : 03 Apr 2025 19:59  
Operator : AR\AJ  
Sample : Q1680-01  
Misc :  
ALS Vial : 20 Sample Multiplier: 1

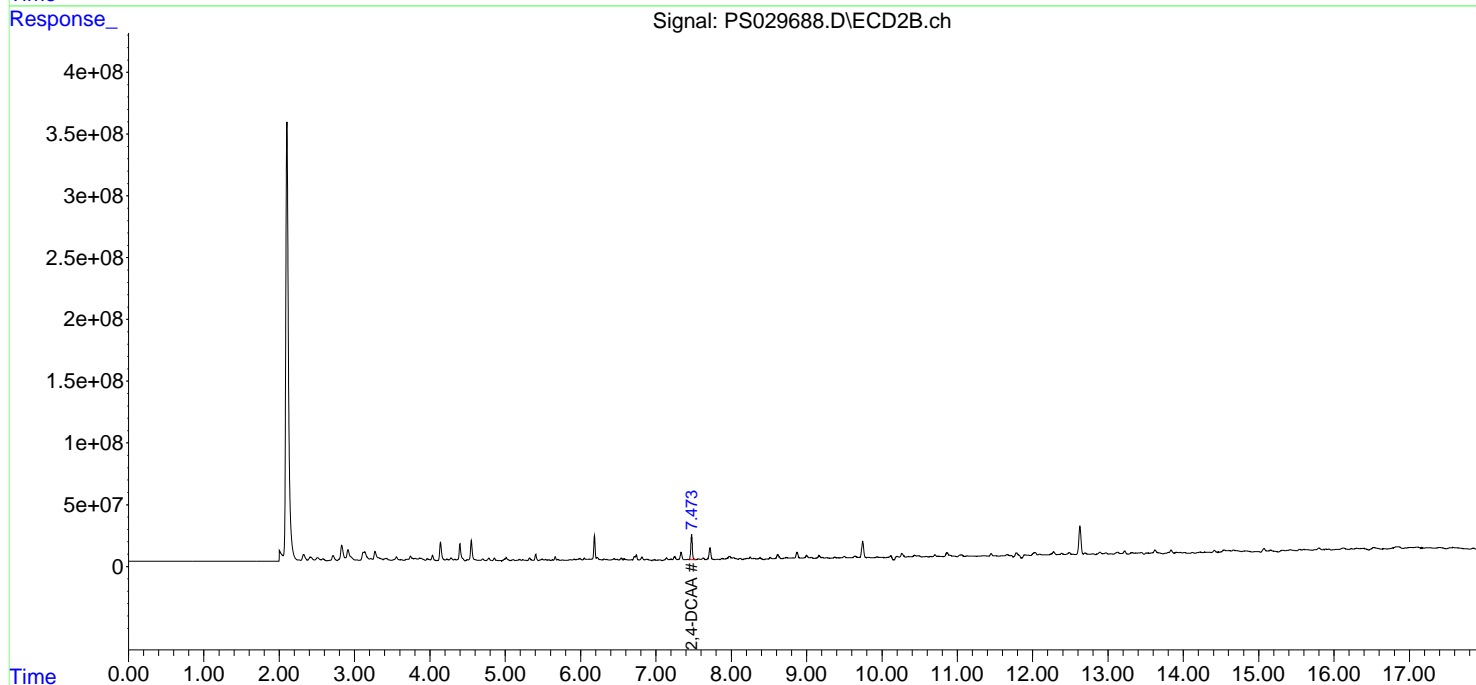
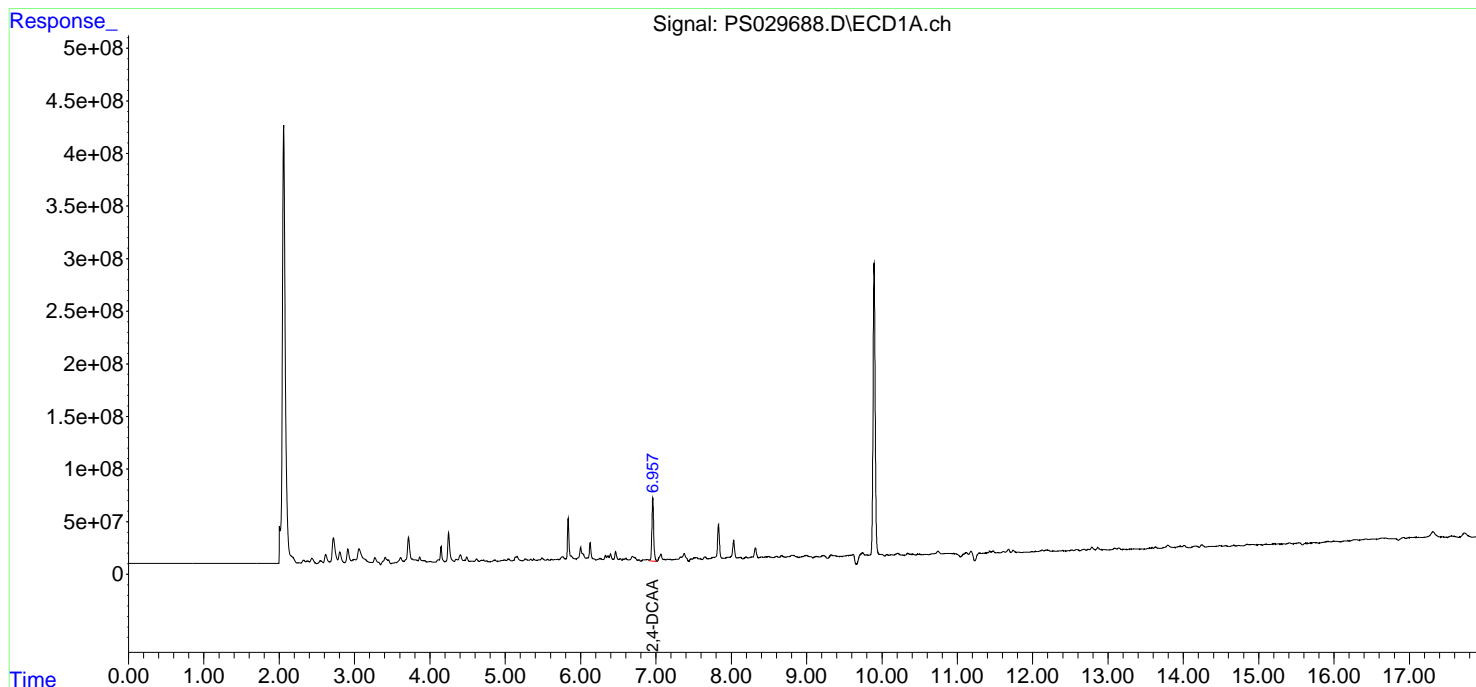
Instrument :  
ECD\_S  
ClientSampleId :  
TP-4

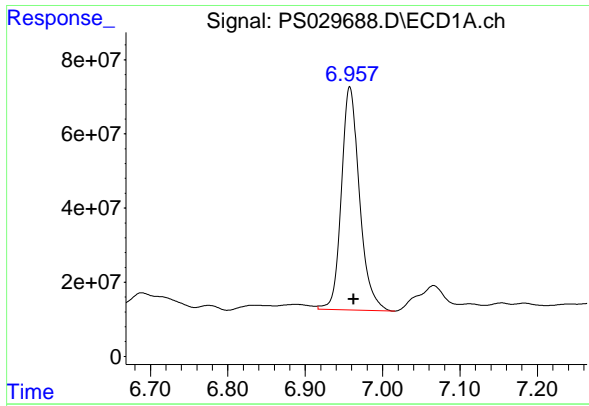
Manual Integrations  
APPROVED

Reviewed By :Abdul Mirza 04/04/2025  
Supervised By :mohammad ahmed 04/05/2025

Integration File signal 1: autoint1.e  
Integration File signal 2: autoint2.e  
Quant Time: Apr 04 03:00:18 2025  
Quant Method : Z:\pestpcbsrv\HPCHEM1\ECD\_S\Method\PS040225.M  
Quant Title : 8080.M  
QLast Update : Wed Apr 02 23:52:55 2025  
Response via : Initial Calibration  
Integrator: ChemStation

Volume Inj. : 1 µl  
Signal #1 Phase : ZB-MR1 Signal #2 Phase: ZB-MR2  
Signal #1 Info : 30M x 0.32mm x0.5 Signal #2 Info : 30M x 0.32mm x 0.25µm





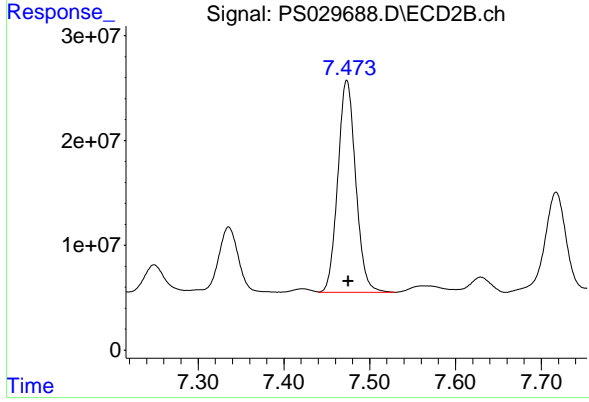
#4 2,4-DCAA

R.T.: 6.957 min  
Delta R.T.: -0.005 min  
Response: 976262136  
Conc: 478.83 ng/ml

Instrument :  
ECD\_S  
ClientSampleId :  
TP-4

Manual Integrations  
APPROVED

Reviewed By :Abdul Mirza 04/04/2025  
Supervised By :mohammad ahmed 04/05/2025



#4 2,4-DCAA

R.T.: 7.473 min  
Delta R.T.: -0.001 min  
Response: 292583436  
Conc: 429.31 ng/ml