

Data Path : Z:\pestpcbsrv\HPCHEM1\ECD_S\Data\PS040524\
 Data File : PS026380.D
 Signal(s) : Signal #1: ECD1A.ch Signal #2: ECD2B.ch
 Acq On : 05 Apr 2024 20:33
 Operator : AR\AJ
 Sample : P1996-04
 Misc :
 ALS Vial : 26 Sample Multiplier: 1

Instrument :
 ECD_S
 ClientSampleId :
 TP2

Integration File signal 1: autoint1.e
 Integration File signal 2: autoint2.e
 Quant Time: Apr 06 01:13:41 2024
 Quant Method : Z:\pestpcbsrv\HPCHEM1\ECD_S\Method\PS040224.M
 Quant Title : 8080.M
 QLast Update : Tue Apr 02 13:37:17 2024
 Response via : Initial Calibration
 Integrator: ChemStation

Volume Inj. : 2 µl
 Signal #1 Phase : Rtx-CLPesticides Signal #2 Phase: Rtx-CLPesticides2
 Signal #1 Info : 30M x 0.32mm x0.5 Signal #2 Info : 30M x 0.32mm x 0.25µm

	Compound	RT#1	RT#2	Resp#1	Resp#2	ng/ml	ng/ml

System Monitoring Compounds							
4) S	2,4-DCAA	7.163	7.666	1103.9E6	308.2E6	355.200	332.054
Target Compounds							
1) T	Dalapon	2.657f	2.683	7921324	5974941	1.590	3.203 #
2) T	3,5-DICHL...	6.330f	6.651	83769784	1433555	18.510	1.017 #
3) T	4-Nitroph...	6.945f	7.231f	45631198	8889013	28.159	20.183 #
5) T	DICAMBA	7.364	7.892	6205236	1076847	<MDL	<MDL #
6) T	MCP P	7.530	7.944f	3037978	11349007	<MDL	3.683 #
7) T	MCPA	7.666f	8.206	2372656	5058696	<MDL	1.217 #
8) T	DICHLORPROP	8.055	8.603f	619785	21222072	<MDL	19.830 #
9) T	2,4-D	8.291	8.899	148.1E6	329428	43.065	<MDL #
10) T	Pentachlo...	8.572	9.433	7023015	4110912	<MDL	<MDL #
11) T	2,4,5-TP ...	9.185f	9.809	21930444	13654689	1.177	2.287 #
12) T	2,4,5-T	9.472f	10.229f	84527714	3283381	4.658	<MDL #
13) T	2,4-DB	10.034	10.771	203.6E6	29107491	84.402	48.546 #
14) T	DINOSEB	0.000	11.120f	0	31941474	N.D.	8.816
15) T	Picloram	10.995f	0.000	50225962	0	2.205	N.D. #
16) T	DCPA	11.493	12.148f	11129133	2376994	<MDL	<MDL #

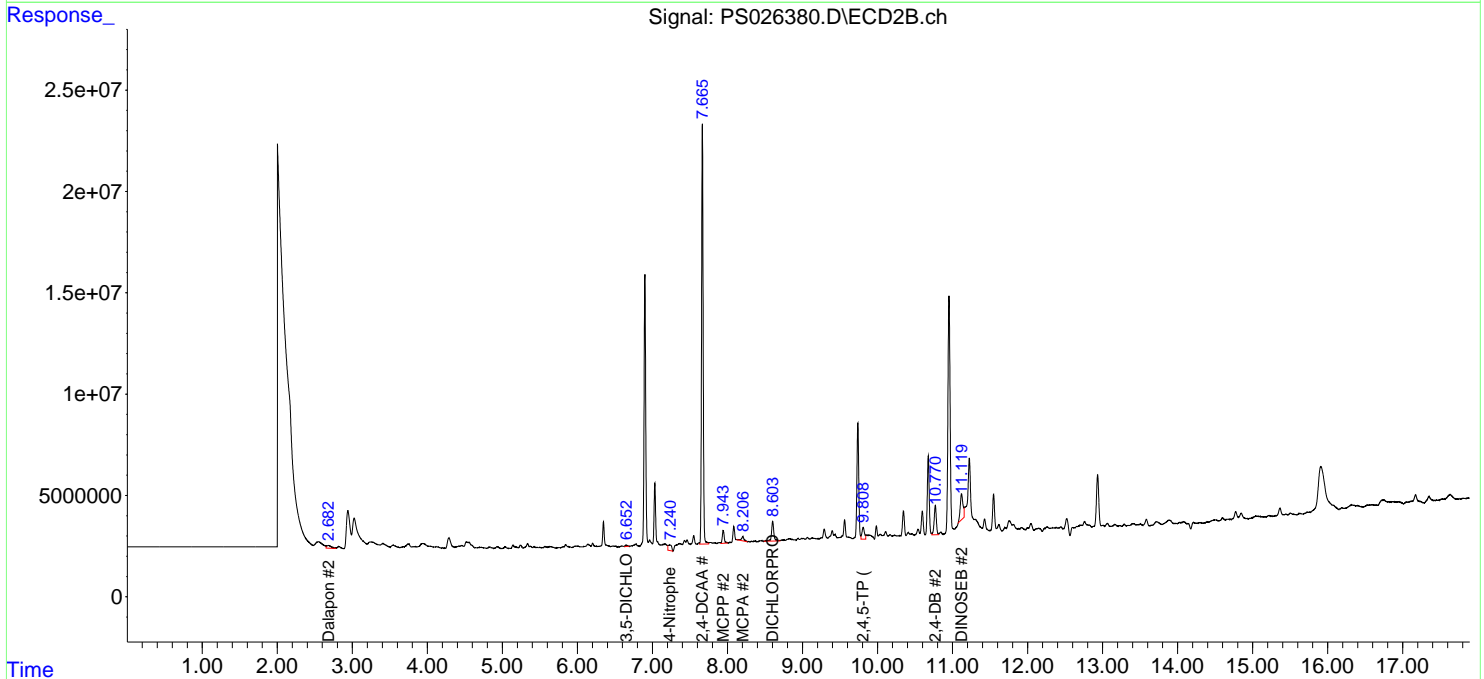
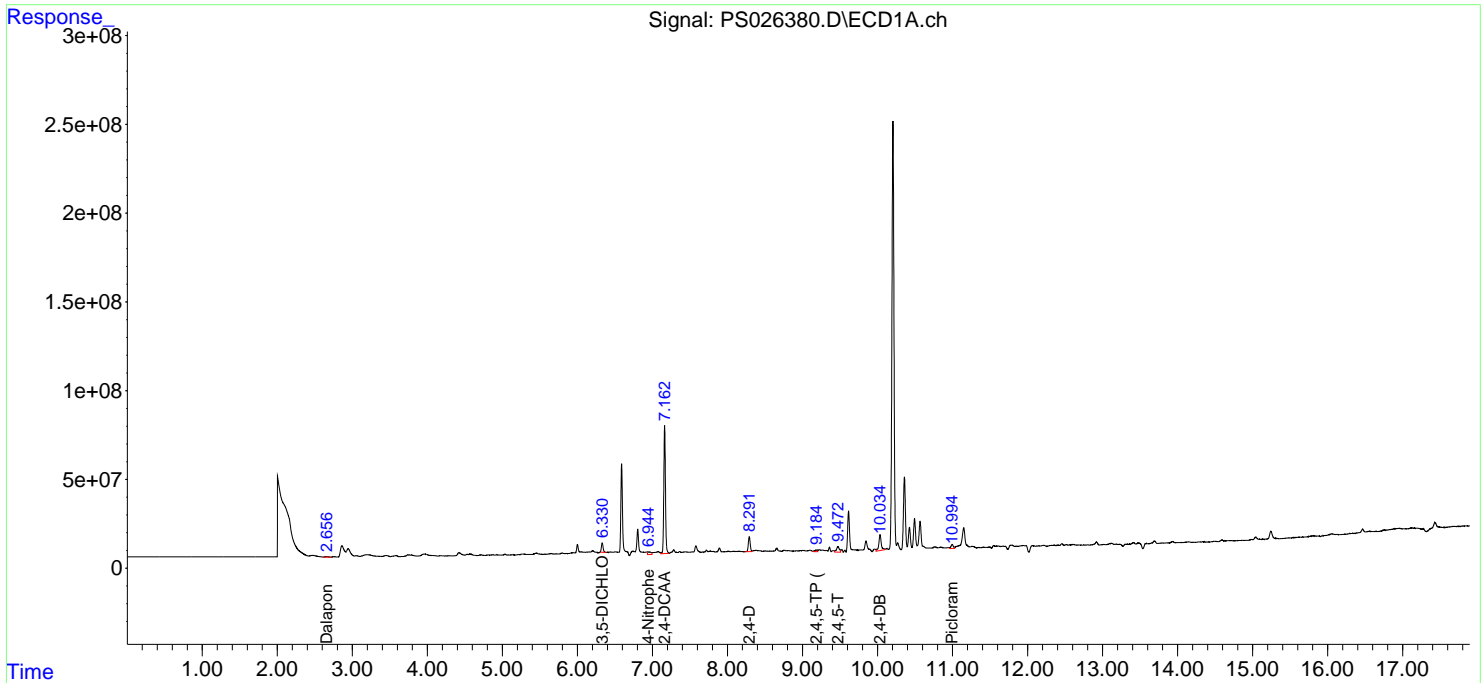
(f)=RT Delta > 1/2 Window (#)=Amounts differ by > 25% (m)=manual int.

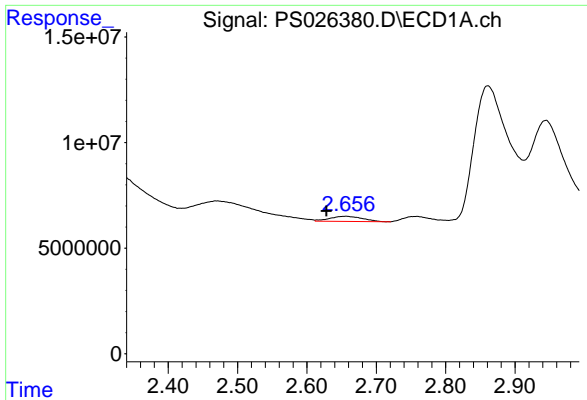
Data Path : Z:\pestpcbsrv\HPCHEM1\ECD_S\Data\PS040524\
 Data File : PS026380.D
 Signal(s) : Signal #1: ECD1A.ch Signal #2: ECD2B.ch
 Acq On : 05 Apr 2024 20:33
 Operator : AR\AJ
 Sample : P1996-04
 Misc :
 ALS Vial : 26 Sample Multiplier: 1

Instrument :
 ECD_S
 ClientSampleId :
 TP2

Integration File signal 1: autoint1.e
 Integration File signal 2: autoint2.e
 Quant Time: Apr 06 01:13:41 2024
 Quant Method : Z:\pestpcbsrv\HPCHEM1\ECD_S\Method\PS040224.M
 Quant Title : 8080.M
 QLast Update : Tue Apr 02 13:37:17 2024
 Response via : Initial Calibration
 Integrator: ChemStation

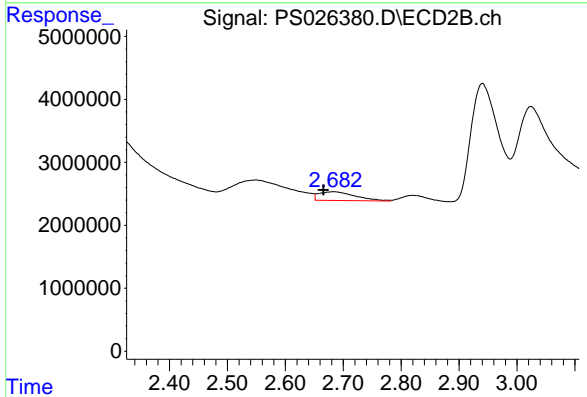
Volume Inj. : 2 µl
 Signal #1 Phase : Rtx-CLPesticides Signal #2 Phase: Rtx-CLPesticides2
 Signal #1 Info : 30M x 0.32mm x0.5 Signal #2 Info : 30M x 0.32mm x 0.25µm



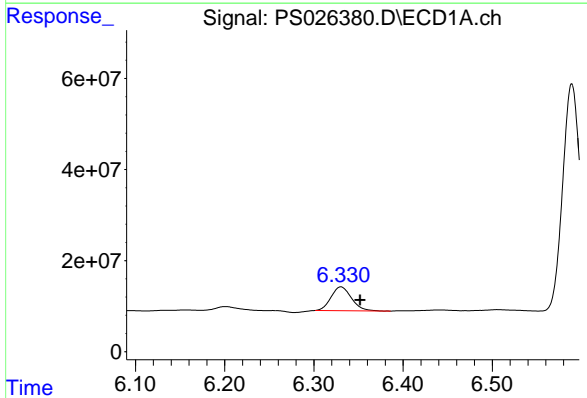


#1 Dalapon
 R.T.: 2.657 min
 Delta R.T.: 0.029 min
 Response: 7921324
 Conc: 1.59 ng/ml

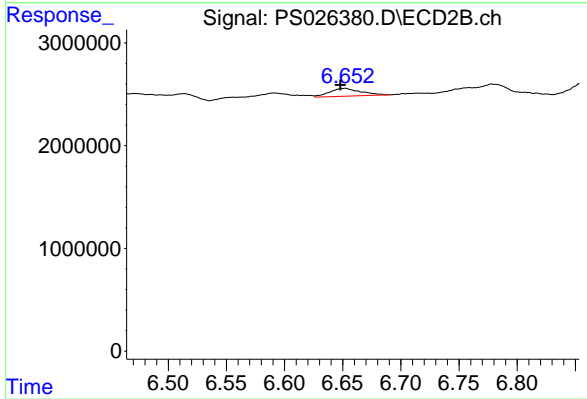
Instrument :
 ECD_S
 ClientSampleId :
 TP2



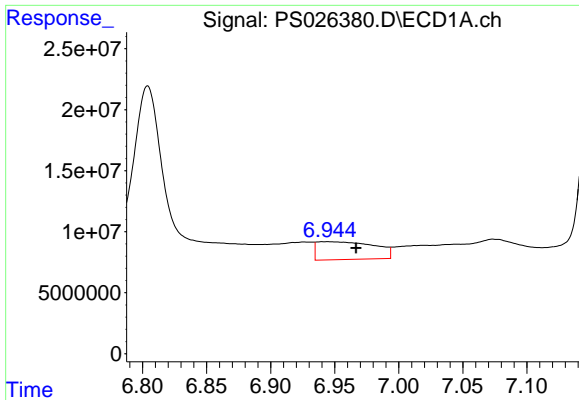
#1 Dalapon
 R.T.: 2.683 min
 Delta R.T.: 0.017 min
 Response: 5974941
 Conc: 3.20 ng/ml



#2 3,5-DICHLOROBENZOIC ACID
 R.T.: 6.330 min
 Delta R.T.: -0.021 min
 Response: 83769784
 Conc: 18.51 ng/ml



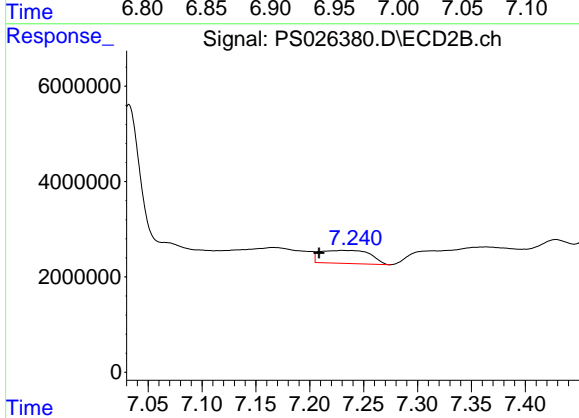
#2 3,5-DICHLOROBENZOIC ACID
 R.T.: 6.651 min
 Delta R.T.: 0.003 min
 Response: 1433555
 Conc: 1.02 ng/ml



#3 4-Nitrophenol

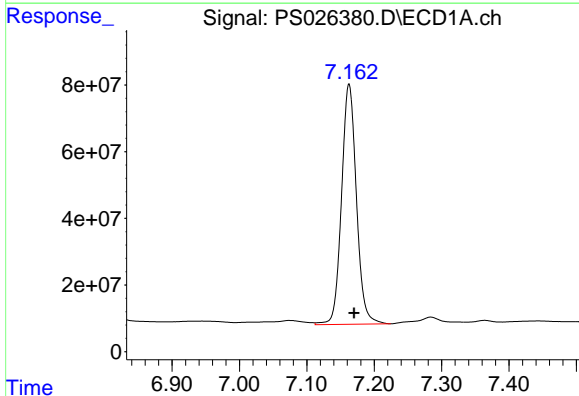
R.T.: 6.945 min
Delta R.T.: -0.022 min
Response: 45631198
Conc: 28.16 ng/ml

Instrument :
ECD_S
ClientSampleId :
TP2



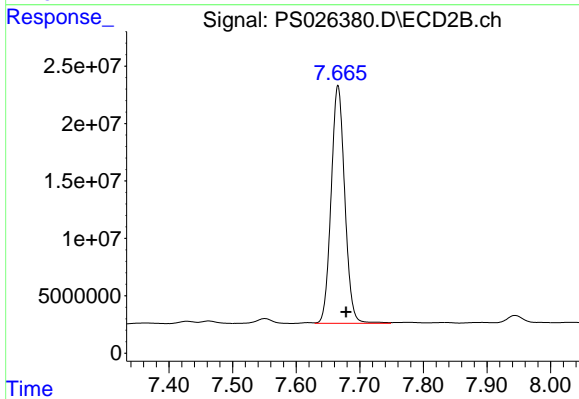
#3 4-Nitrophenol

R.T.: 7.231 min
Delta R.T.: 0.022 min
Response: 8889013
Conc: 20.18 ng/ml



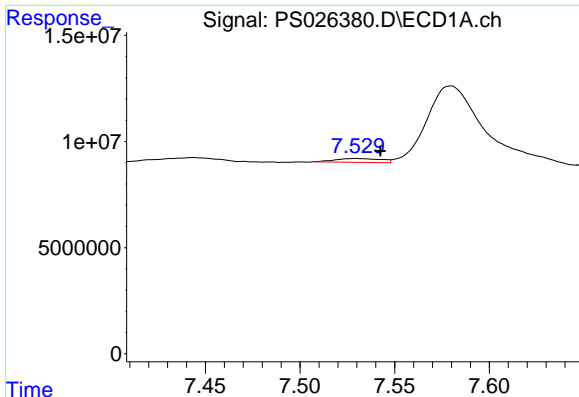
#4 2,4-DCAA

R.T.: 7.163 min
Delta R.T.: -0.007 min
Response: 1103891981
Conc: 355.20 ng/ml



#4 2,4-DCAA

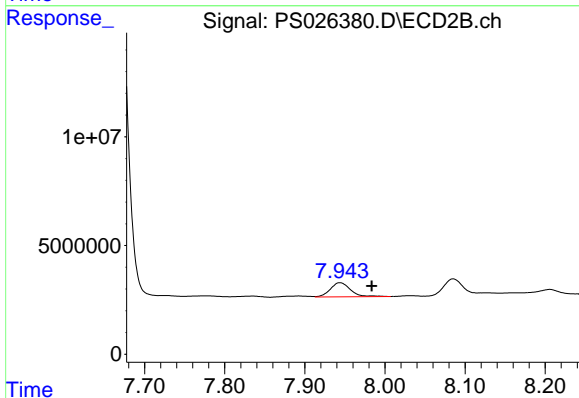
R.T.: 7.666 min
Delta R.T.: -0.013 min
Response: 308180077
Conc: 332.05 ng/ml



#6 MCPP

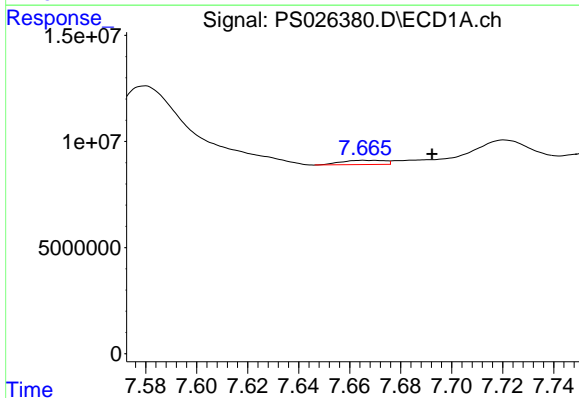
R.T.: 7.530 min
 Delta R.T.: -0.013 min
 Response: 3037978
 Conc: N.D.

Instrument :
 ECD_S
 ClientSampleId :
 TP2



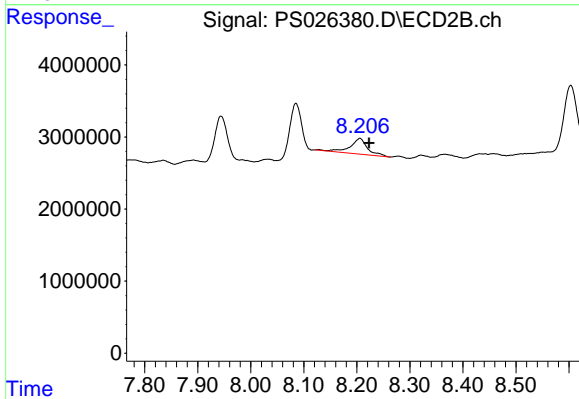
#6 MCPP

R.T.: 7.944 min
 Delta R.T.: -0.040 min
 Response: 11349007
 Conc: 3.68 ug/ml



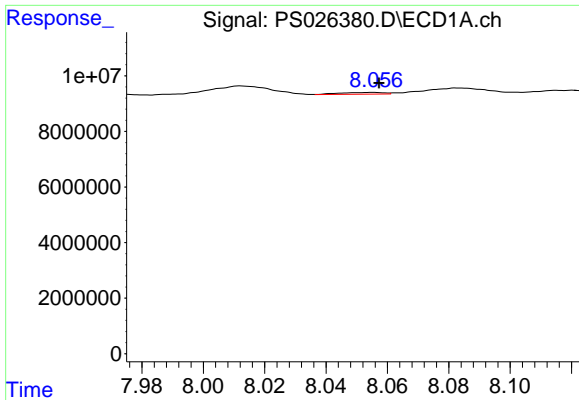
#7 MCPA

R.T.: 7.666 min
 Delta R.T.: -0.026 min
 Response: 2372656
 Conc: N.D.



#7 MCPA

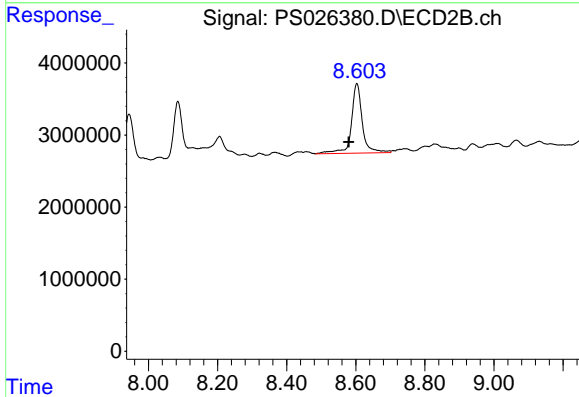
R.T.: 8.206 min
 Delta R.T.: -0.017 min
 Response: 5058696
 Conc: 1.22 ug/ml



#8 DICHLORPROP

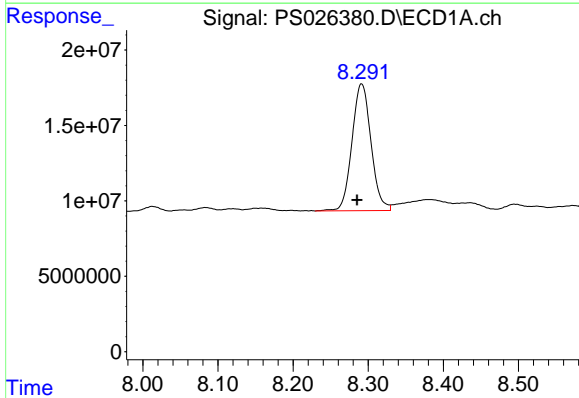
R.T.: 8.055 min
 Delta R.T.: -0.002 min
 Response: 619785
 Conc: N.D.

Instrument :
 ECD_S
 ClientSampleId :
 TP2



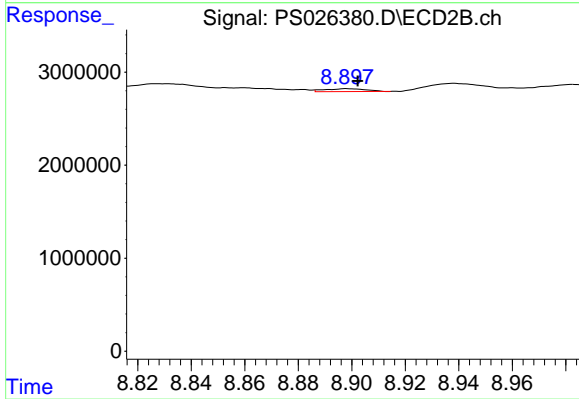
#8 DICHLORPROP

R.T.: 8.603 min
 Delta R.T.: 0.023 min
 Response: 2122072
 Conc: 19.83 ng/ml



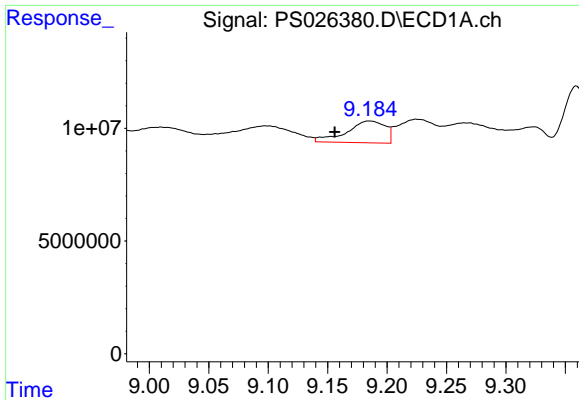
#9 2,4-D

R.T.: 8.291 min
 Delta R.T.: 0.006 min
 Response: 148102973
 Conc: 43.07 ng/ml



#9 2,4-D

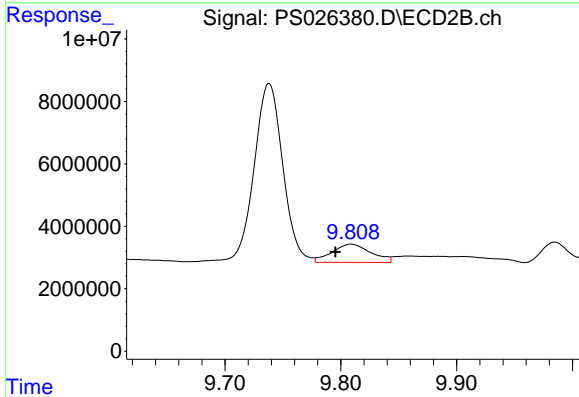
R.T.: 8.899 min
 Delta R.T.: -0.004 min
 Response: 329428
 Conc: N.D.



#11 2,4,5-TP (SILVEX)

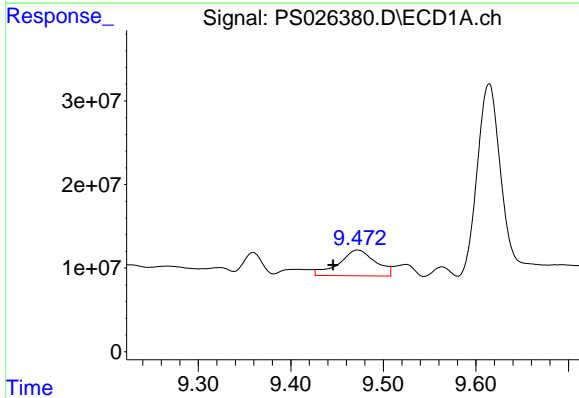
R.T.: 9.185 min
 Delta R.T.: 0.029 min
 Response: 21930444
 Conc: 1.18 ng/ml

Instrument :
 ECD_S
 ClientSampleId :
 TP2



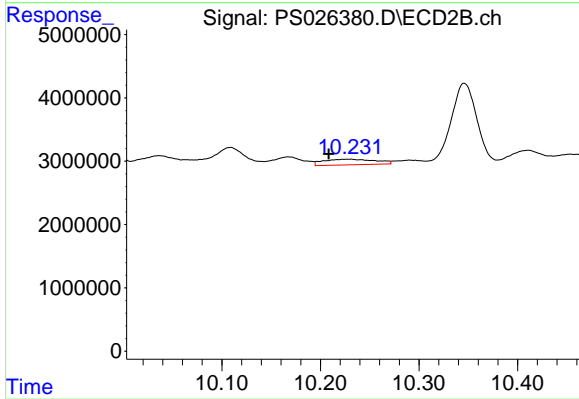
#11 2,4,5-TP (SILVEX)

R.T.: 9.809 min
 Delta R.T.: 0.014 min
 Response: 13654689
 Conc: 2.29 ng/ml



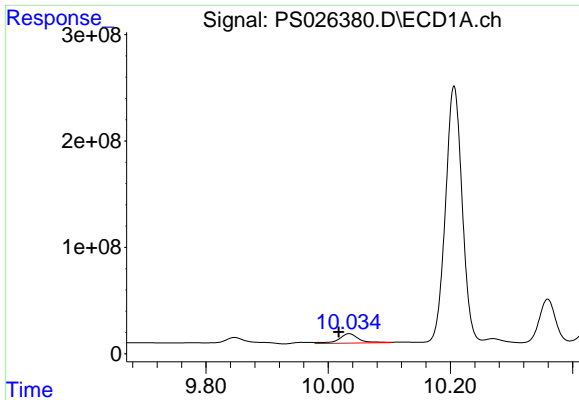
#12 2,4,5-T

R.T.: 9.472 min
 Delta R.T.: 0.026 min
 Response: 84527714
 Conc: 4.66 ng/ml



#12 2,4,5-T

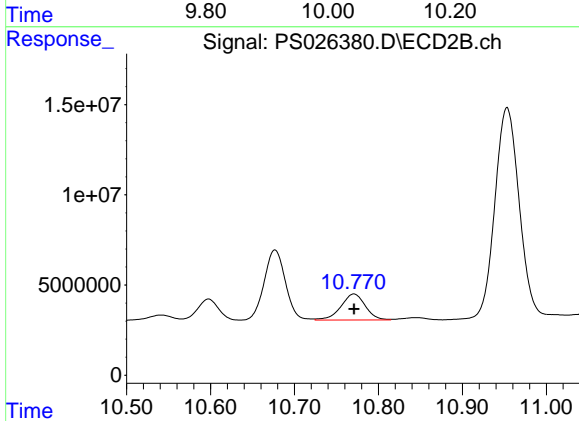
R.T.: 10.229 min
 Delta R.T.: 0.020 min
 Response: 3283381
 Conc: N.D.



#13 2,4-DB

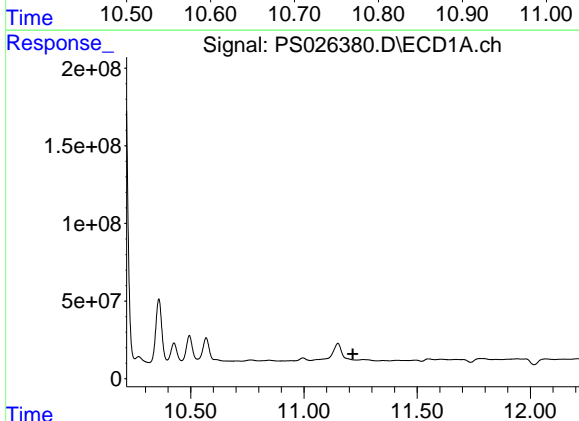
R.T.: 10.034 min
 Delta R.T.: 0.017 min
 Response: 203603114
 Conc: 84.40 ng/ml

Instrument :
 ECD_S
 ClientSampleId :
 TP2



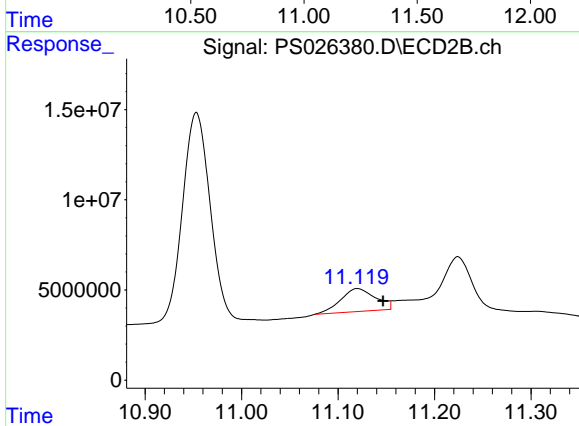
#13 2,4-DB

R.T.: 10.771 min
 Delta R.T.: 0.000 min
 Response: 29107491
 Conc: 48.55 ng/ml



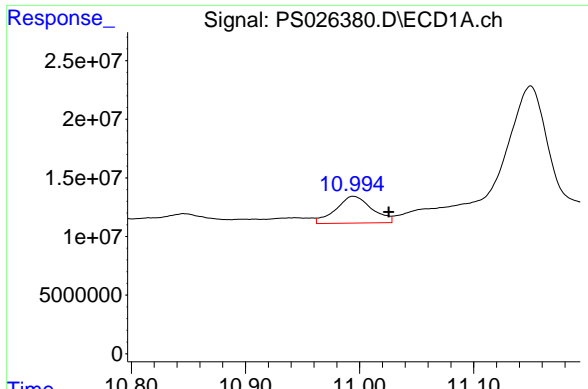
#14 DINOSEB

R.T.: 0.000 min
 Exp R.T. : 11.216 min
 Response: 0
 Conc: N.D.



#14 DINOSEB

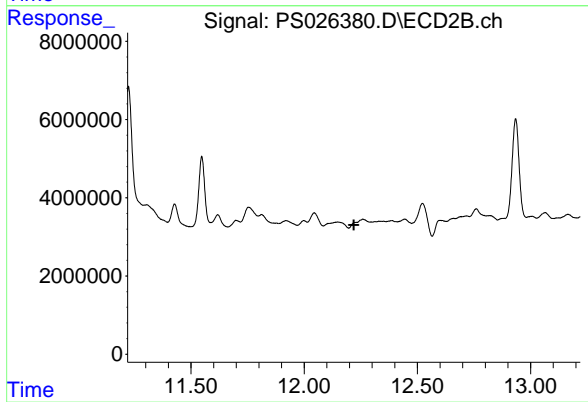
R.T.: 11.120 min
 Delta R.T.: -0.026 min
 Response: 31941474
 Conc: 8.82 ng/ml



#15 Picloram

R.T.: 10.995 min
Delta R.T.: -0.031 min
Response: 50225962
Conc: 2.21 ng/ml

Instrument :
ECD_S
ClientSampleId :
TP2



#15 Picloram

R.T.: 0.000 min
Exp R.T. : 12.219 min
Response: 0
Conc: N.D.