

Data Path : Z:\pestpcbsrv\HPCHEM1\ECD_S\Data\PS040524\
 Data File : PS026363.D
 Signal(s) : Signal #1: ECD1A.ch Signal #2: ECD2B.ch
 Acq On : 05 Apr 2024 10:38
 Operator : AR\AJ
 Sample : P1974-01
 Misc :
 ALS Vial : 7 Sample Multiplier: 1

Instrument :
 ECD_S
 ClientSampleId :
 SOIL-1

Integration File signal 1: autoint1.e
 Integration File signal 2: autoint2.e
 Quant Time: Apr 05 16:26:56 2024
 Quant Method : Z:\pestpcbsrv\HPCHEM1\ECD_S\Method\PS040224.M
 Quant Title : 8080.M
 QLast Update : Tue Apr 02 13:37:17 2024
 Response via : Initial Calibration
 Integrator: ChemStation

Volume Inj. : 2 µl
 Signal #1 Phase : Rtx-CLPesticides Signal #2 Phase: Rtx-CLPesticides2
 Signal #1 Info : 30M x 0.32mm x0.5 Signal #2 Info : 30M x 0.32mm x 0.25µm

Compound	RT#1	RT#2	Resp#1	Resp#2	ng/ml	ng/ml

System Monitoring Compounds						
4) S 2,4-DCAA	7.164	7.669	1081.7E6	302.4E6	348.069	325.774

Target Compounds

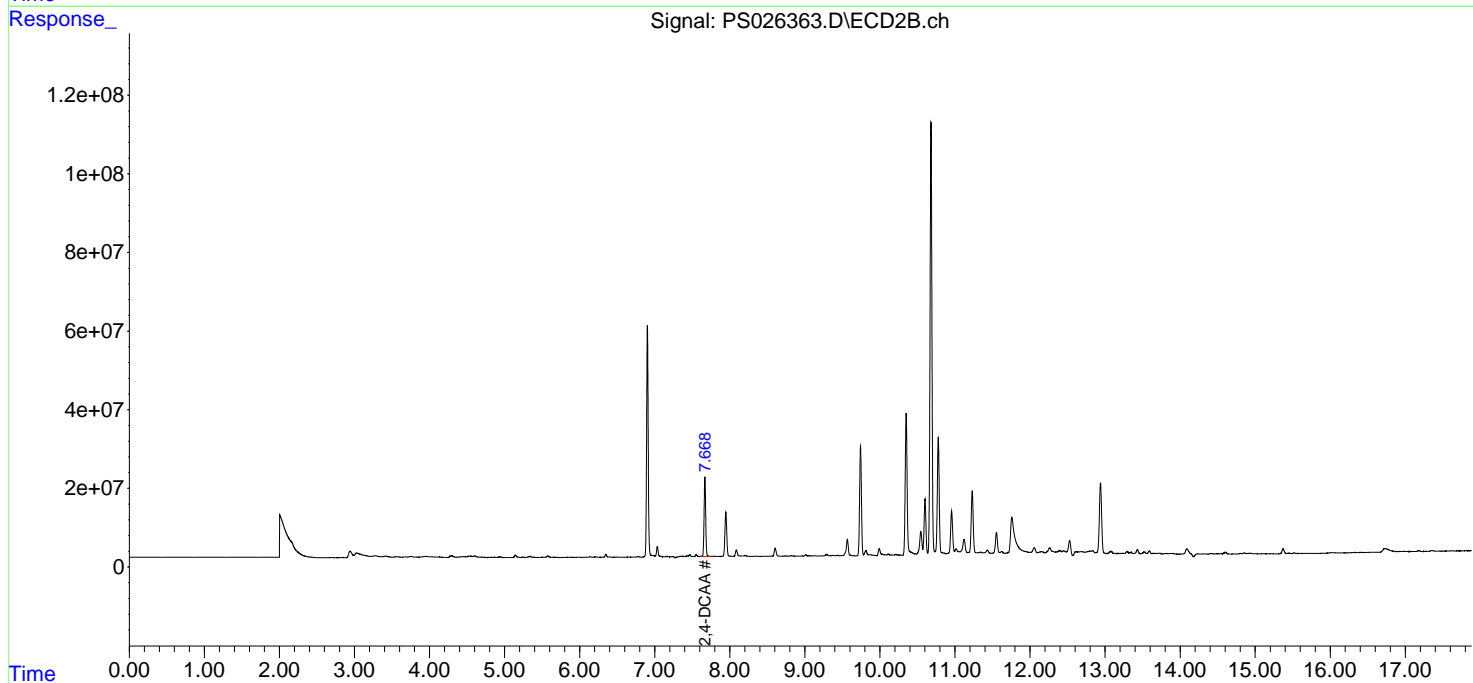
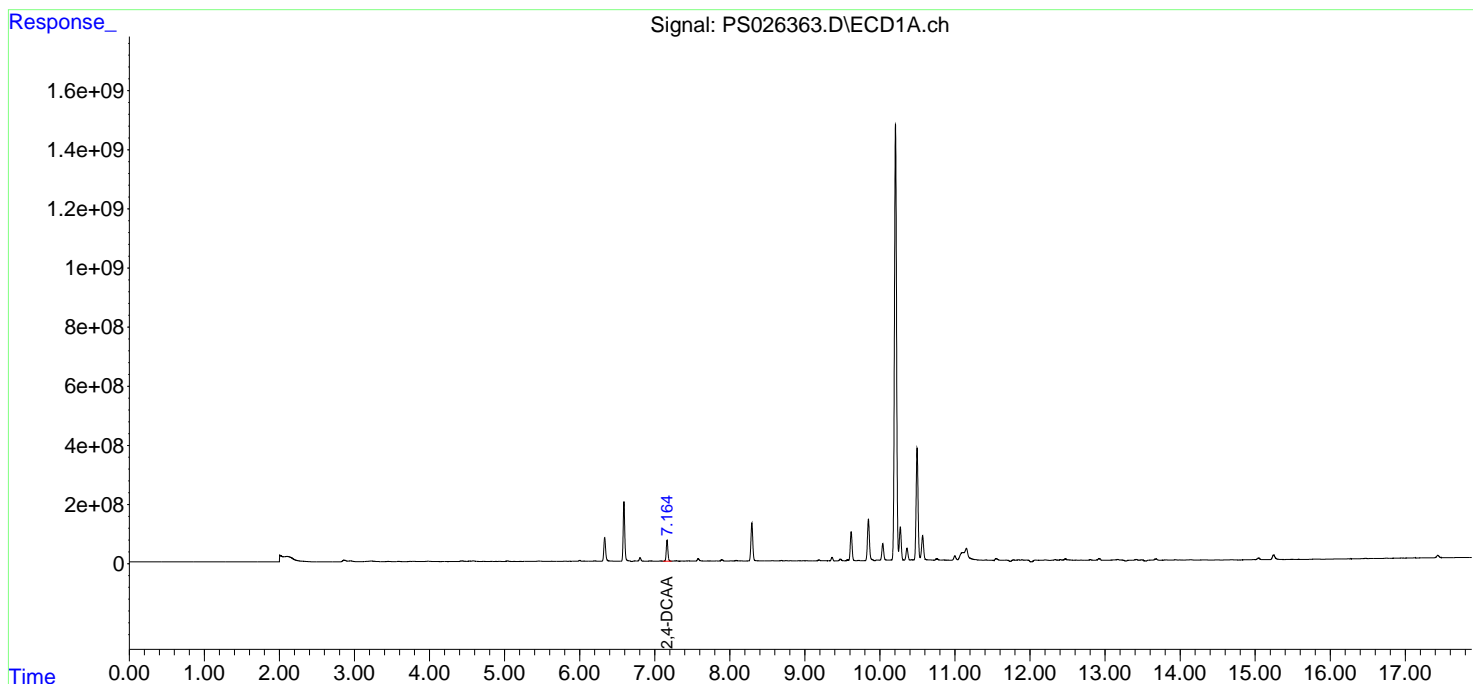
(f)=RT Delta > 1/2 Window (#)=Amounts differ by > 25% (m)=manual int.

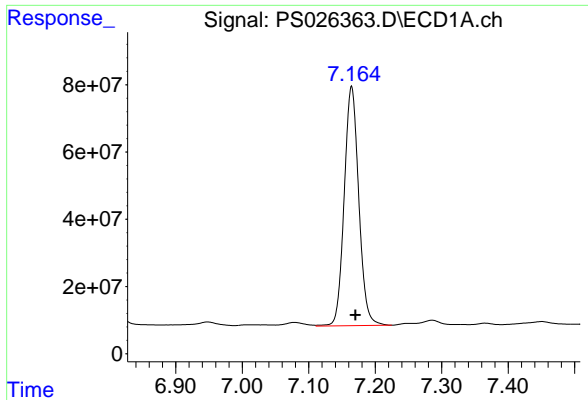
Data Path : Z:\pestpcbsrv\HPCHEM1\ECD_S\Data\PS040524\
Data File : PS026363.D
Signal(s) : Signal #1: ECD1A.ch Signal #2: ECD2B.ch
Acq On : 05 Apr 2024 10:38
Operator : AR\AJ
Sample : P1974-01
Misc :
ALS Vial : 7 Sample Multiplier: 1

Instrument :
ECD_S
ClientSampleId :
SOIL-1

Integration File signal 1: autoint1.e
Integration File signal 2: autoint2.e
Quant Time: Apr 05 16:26:56 2024
Quant Method : Z:\pestpcbsrv\HPCHEM1\ECD_S\Method\PS040224.M
Quant Title : 8080.M
QLast Update : Tue Apr 02 13:37:17 2024
Response via : Initial Calibration
Integrator: ChemStation

Volume Inj. : 2 µl
Signal #1 Phase : Rtx-CLPesticides Signal #2 Phase: Rtx-CLPesticides2
Signal #1 Info : 30M x 0.32mm x0.5 Signal #2 Info : 30M x 0.32mm x 0.25µm

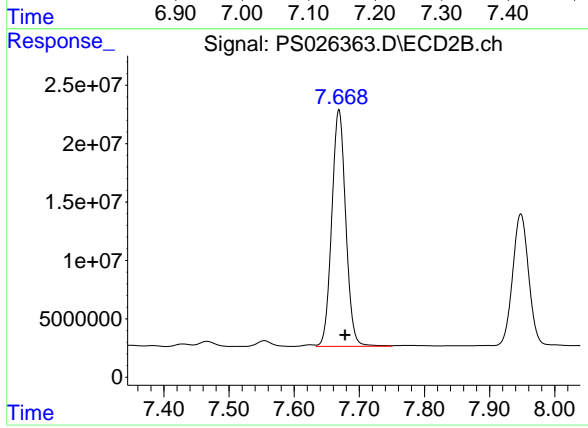




#4 2,4-DCAA

R.T.: 7.164 min
Delta R.T.: -0.006 min
Response: 1081730485
Conc: 348.07 ng/ml

Instrument :
ECD_S
ClientSampleId :
SOIL-1



#4 2,4-DCAA

R.T.: 7.669 min
Delta R.T.: -0.010 min
Response: 302351188
Conc: 325.77 ng/ml