

Data Path : Z:\pestpcbsrv\HPCHEM1\ECD_S\Data\PS040722\
 Data File : PS018941.D
 Signal(s) : Signal #1: ECD1A.ch Signal #2: ECD2B.ch
 Acq On : 07 Apr 2022 23:46
 Operator : AJ\MA
 Sample : HSTDCCC750
 Misc :
 ALS Vial : 3 Sample Multiplier: 1

Instrument :
 ECD_S
 ClientSampleId :

Integration File signal 1: autoint1.e
 Integration File signal 2: autoint2.e
 Quant Time: Apr 08 01:22:02 2022
 Quant Method : Z:\pestpcbsrv\HPCHEM1\ECD_S\Method\PS033122.M
 Quant Title : 8080.M
 QLast Update : Thu Mar 31 16:06:48 2022
 Response via : Initial Calibration
 Integrator: ChemStation

Volume Inj. : 2 µl
 Signal #1 Phase : Rtx-CLPesticides Signal #2 Phase: Rtx-CLPesticides2
 Signal #1 Info : 30M x 0.32mm x0.5 Signal #2 Info : 30M x 0.32mm x 0.25µm

	Compound	RT#1	RT#2	Resp#1	Resp#2	ng/ml	ng/ml

System Monitoring Compounds							
4) S	2,4-DCAA	7.225	6.804	2749.1E6	578.0E6	941.634	809.527
Target Compounds							
1) T	Dalapon	3.027	2.532	2786.9E6	611.6E6	609.226	659.380
2) T	3,5-DICHL...	6.435	5.978	3604.0E6	825.5E6	898.387	748.691
3) T	4-Nitroph...	7.057	6.418	728.2E6	302.4E6	637.902	711.892
5) T	DICAMBA	7.417	6.971	10510.5E6	2424.5E6	835.954	761.598
6) T	MCP P	7.589	7.070	855.5E6	194.9E6	83.846	76.165
7) T	MCPA	7.738	7.283	1149.8E6	267.6E6	80.780	74.704
8) T	DICHLORPROP	8.111	7.593	2584.7E6	626.7E6	775.383	762.060
9) T	2,4-D	8.341	7.885	3054.7E6	719.0E6	764.387	777.958
10) T	Pentachlo...	8.651	8.313	34285.1E6	7963.3E6	766.291	756.744
11) T	2,4,5-TP ...	9.203	8.675	14434.5E6	3557.4E6	705.445	778.211
12) T	2,4,5-T	9.487	9.053	14112.2E6	3314.8E6	688.355	796.031
13) T	2,4-DB	10.041	9.559	2447.1E6	445.6E6	720.832	782.290
14) T	DINOSEB	11.202	9.887	10203.0E6	2473.8E6	624.942	767.098
15) T	Picloram	11.022	10.868	17845.1E6	4086.2E6	637.823	722.677
16) T	DCPA	11.469	10.818	16490.9E6	4276.9E6	655.183	784.655

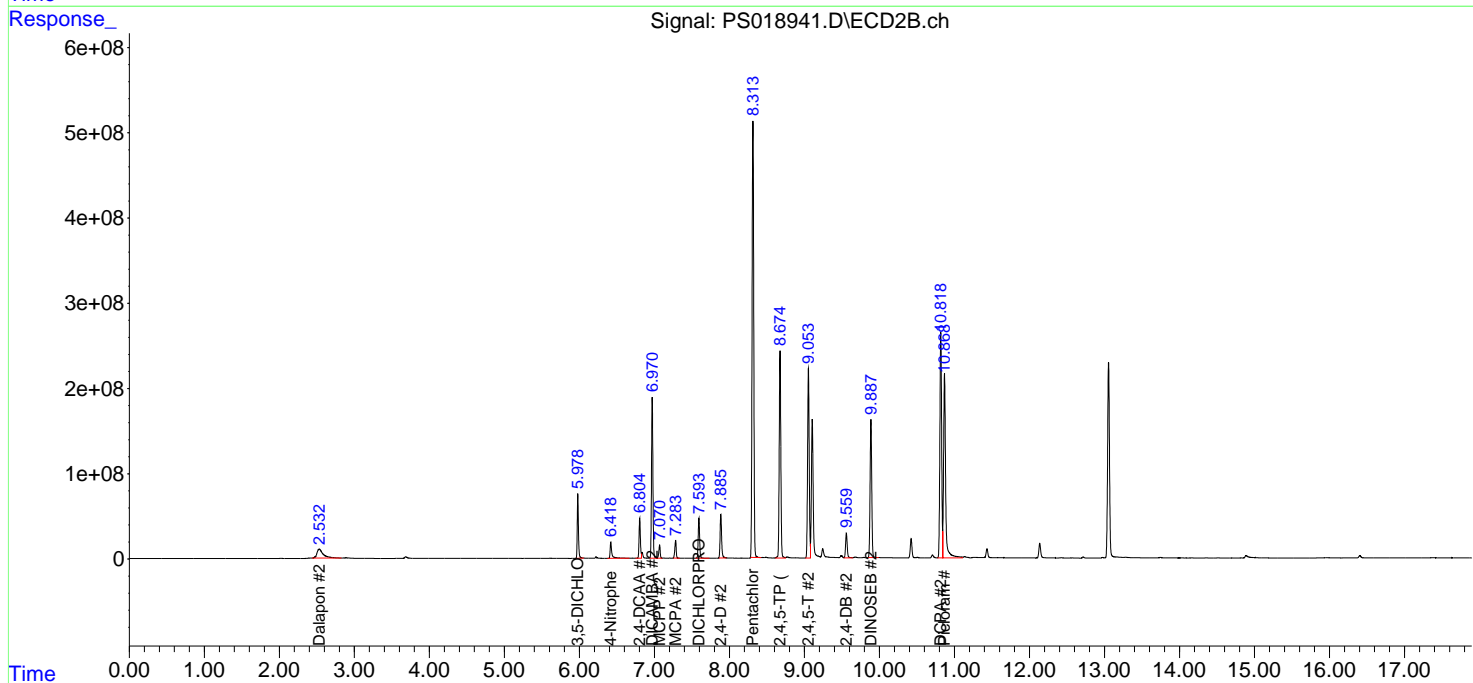
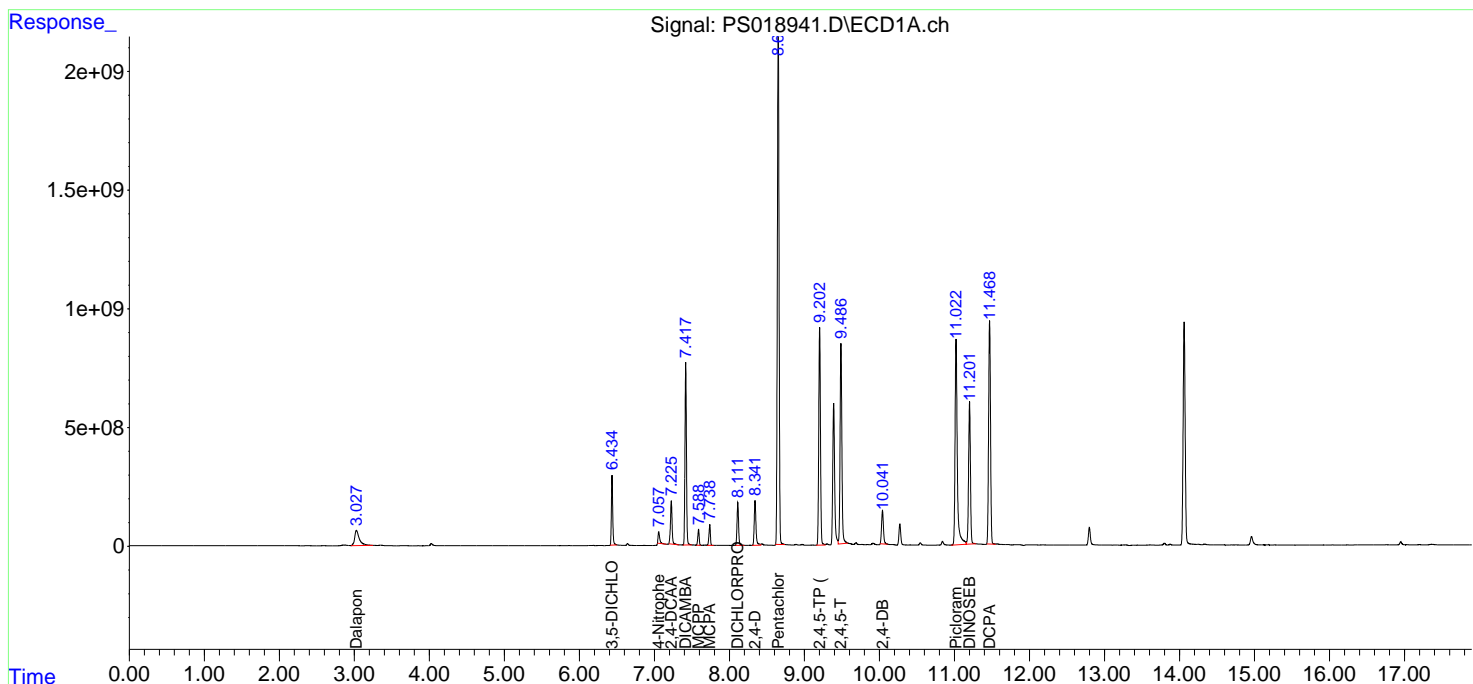
(f)=RT Delta > 1/2 Window (#)=Amounts differ by > 25% (m)=manual int.

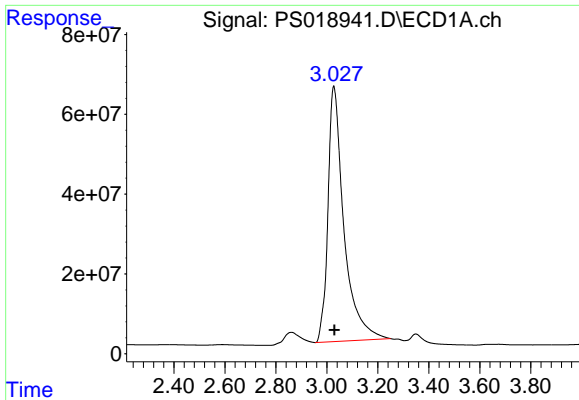
Data Path : Z:\pestpcbsrv\HPCHEM1\ECD_S\Data\PS040722\
 Data File : PS018941.D
 Signal(s) : Signal #1: ECD1A.ch Signal #2: ECD2B.ch
 Acq On : 07 Apr 2022 23:46
 Operator : AJ\MA
 Sample : HSTDCCC750
 Misc :
 ALS Vial : 3 Sample Multiplier: 1

Instrument :
 ECD_S
 ClientSampleId :

Integration File signal 1: autoint1.e
 Integration File signal 2: autoint2.e
 Quant Time: Apr 08 01:22:02 2022
 Quant Method : Z:\pestpcbsrv\HPCHEM1\ECD_S\Method\PS033122.M
 Quant Title : 8080.M
 QLast Update : Thu Mar 31 16:06:48 2022
 Response via : Initial Calibration
 Integrator: ChemStation

Volume Inj. : 2 µl
 Signal #1 Phase : Rtx-CLPesticides Signal #2 Phase: Rtx-CLPesticides2
 Signal #1 Info : 30M x 0.32mm x0.5 Signal #2 Info : 30M x 0.32mm x 0.25µm

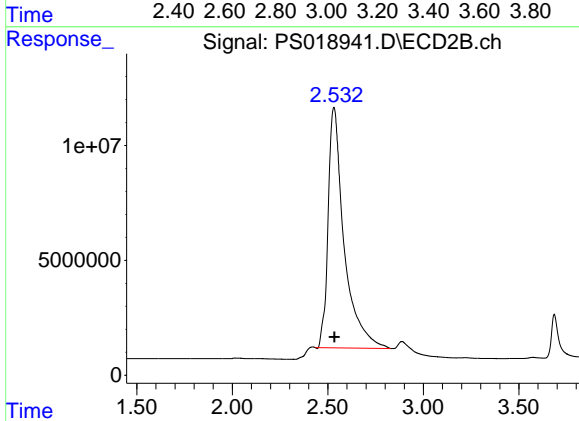




#1 Dalapon

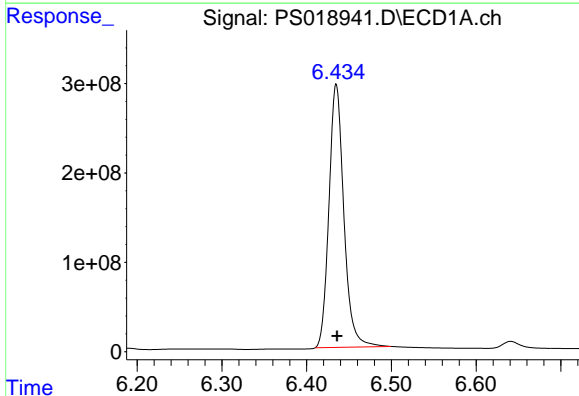
R.T.: 3.027 min
 Delta R.T.: -0.002 min
 Response: 2786882430
 Conc: 609.23 ng/ml

Instrument :
 ECD_S
 ClientSampleId :



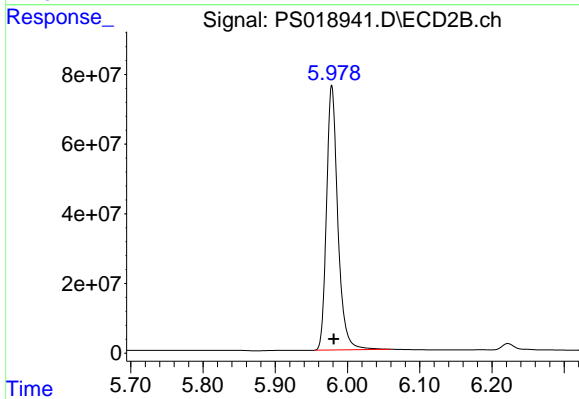
#1 Dalapon

R.T.: 2.532 min
 Delta R.T.: -0.003 min
 Response: 611590692
 Conc: 659.38 ng/ml



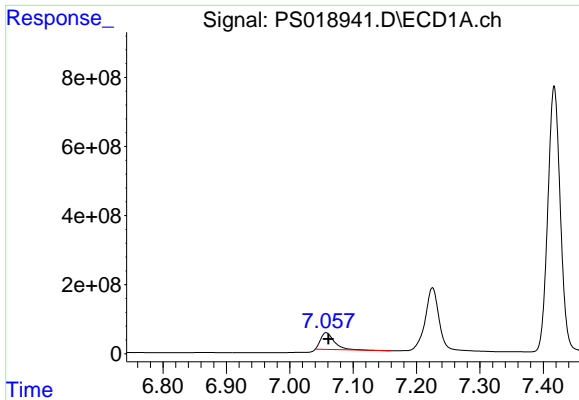
#2 3,5-DICHLOROBENZOIC ACID

R.T.: 6.435 min
 Delta R.T.: 0.000 min
 Response: 3604009965
 Conc: 898.39 ng/ml



#2 3,5-DICHLOROBENZOIC ACID

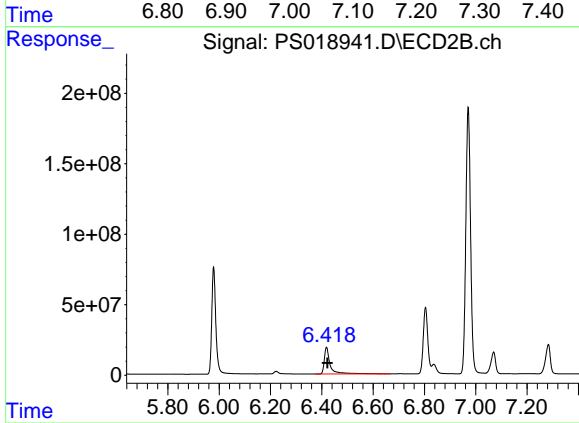
R.T.: 5.978 min
 Delta R.T.: -0.003 min
 Response: 825524641
 Conc: 748.69 ng/ml



#3 4-Nitrophenol

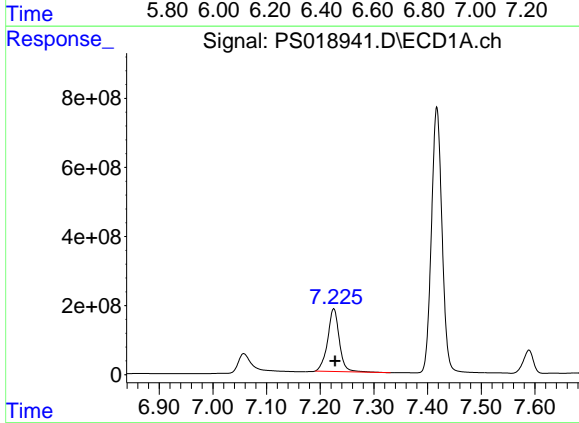
R.T.: 7.057 min
 Delta R.T.: -0.004 min
 Response: 728166271
 Conc: 637.90 ng/ml

Instrument :
 ECD_S
 ClientSampleId :



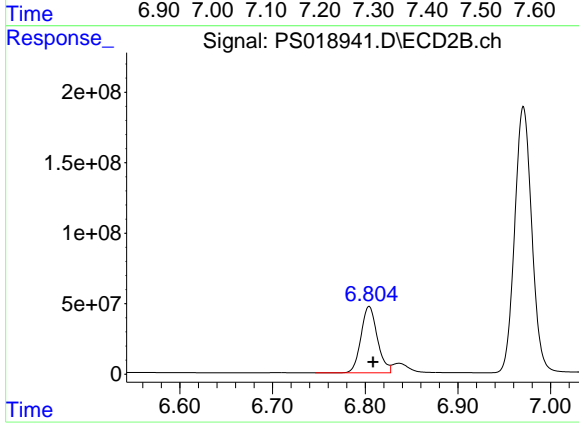
#3 4-Nitrophenol

R.T.: 6.418 min
 Delta R.T.: -0.003 min
 Response: 302390385
 Conc: 711.89 ng/ml



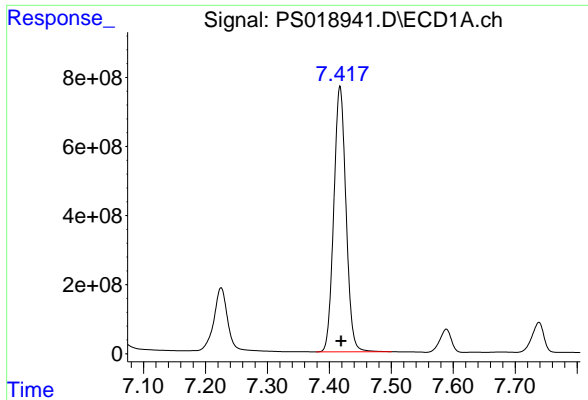
#4 2,4-DCAA

R.T.: 7.225 min
 Delta R.T.: -0.002 min
 Response: 2749063503
 Conc: 941.63 ng/ml



#4 2,4-DCAA

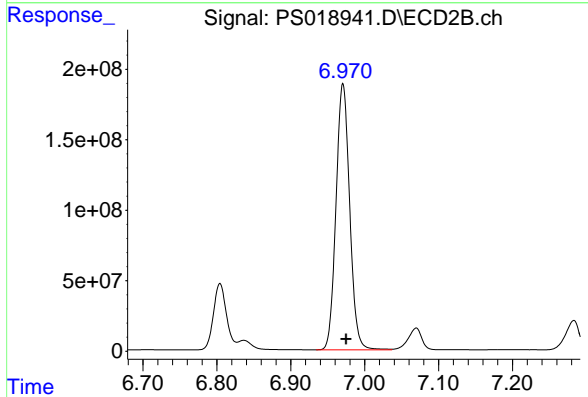
R.T.: 6.804 min
 Delta R.T.: -0.004 min
 Response: 577955941
 Conc: 809.53 ng/ml



#5 DICAMBA

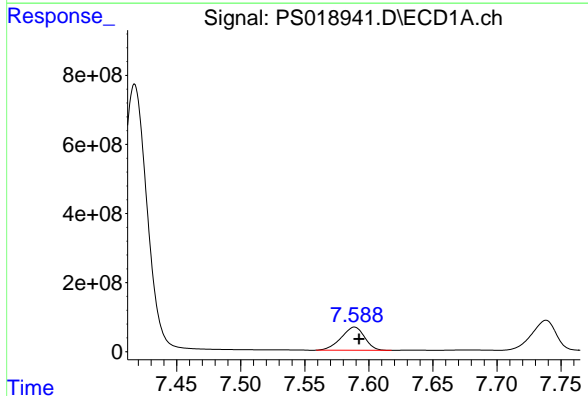
R.T.: 7.417 min
 Delta R.T.: -0.002 min
 Response: 10510501373
 Conc: 835.95 ng/ml

Instrument :
 ECD_S
 ClientSampleId :



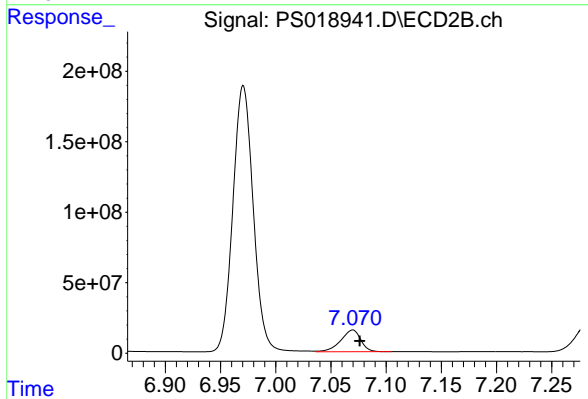
#5 DICAMBA

R.T.: 6.971 min
 Delta R.T.: -0.004 min
 Response: 2424480805
 Conc: 761.60 ng/ml



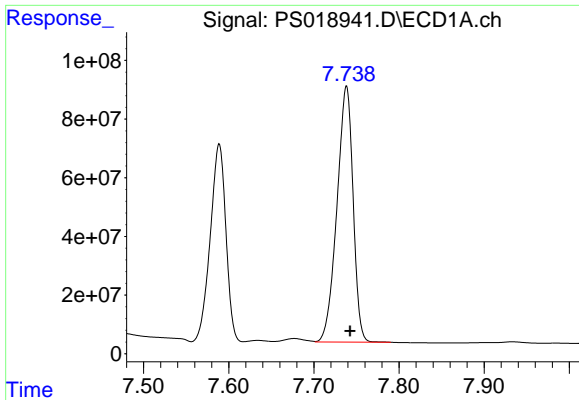
#6 MCPP

R.T.: 7.589 min
 Delta R.T.: -0.003 min
 Response: 855455915
 Conc: 83.85 ug/ml



#6 MCPP

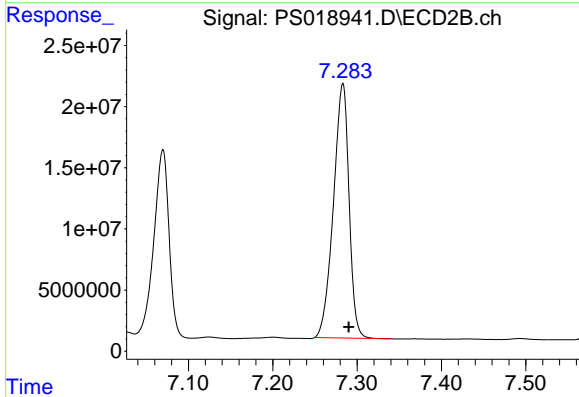
R.T.: 7.070 min
 Delta R.T.: -0.006 min
 Response: 194866389
 Conc: 76.16 ug/ml



#7 MCPA

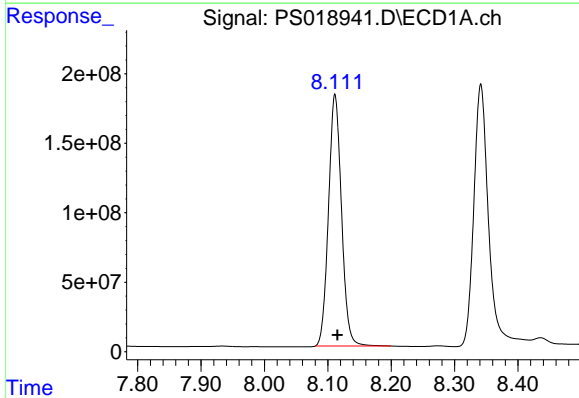
R.T.: 7.738 min
 Delta R.T.: -0.004 min
 Response: 1149830997
 Conc: 80.78 ug/ml

Instrument :
 ECD_S
 ClientSampleId :



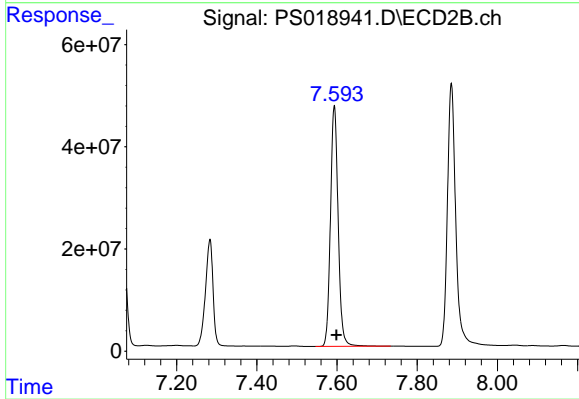
#7 MCPA

R.T.: 7.283 min
 Delta R.T.: -0.007 min
 Response: 267645519
 Conc: 74.70 ug/ml



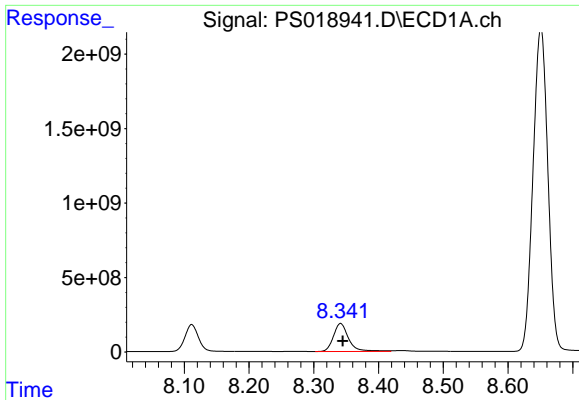
#8 DICHLORPROP

R.T.: 8.111 min
 Delta R.T.: -0.004 min
 Response: 2584742812
 Conc: 775.38 ng/ml



#8 DICHLORPROP

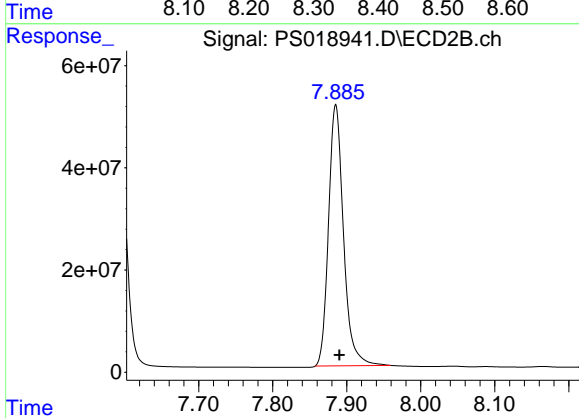
R.T.: 7.593 min
 Delta R.T.: -0.005 min
 Response: 626684634
 Conc: 762.06 ng/ml



#9 2,4-D

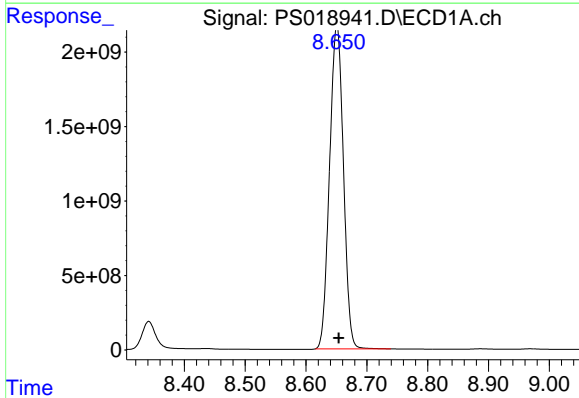
R.T.: 8.341 min
 Delta R.T.: -0.003 min
 Response: 3054665059
 Conc: 764.39 ng/ml

Instrument :
 ECD_S
 ClientSampleId :



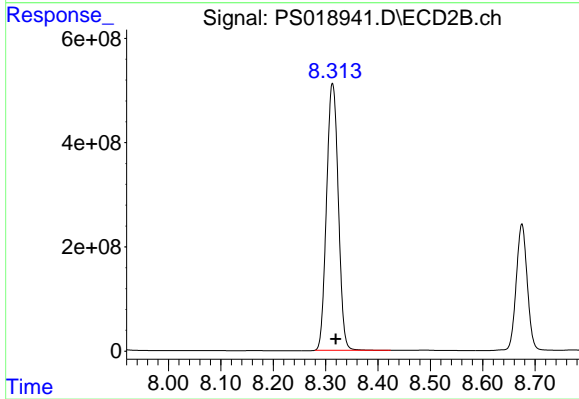
#9 2,4-D

R.T.: 7.885 min
 Delta R.T.: -0.005 min
 Response: 719013320
 Conc: 777.96 ng/ml



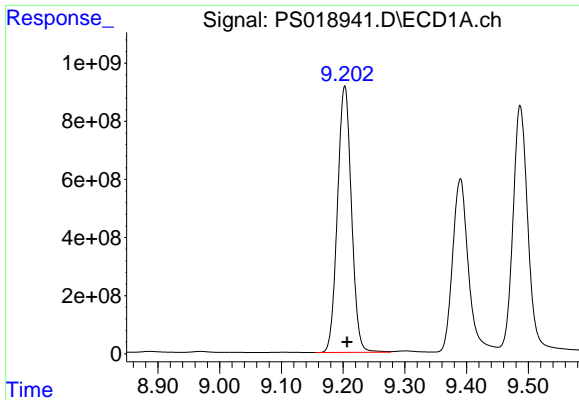
#10 Pentachlorophenol

R.T.: 8.651 min
 Delta R.T.: -0.003 min
 Response: 34285058325
 Conc: 766.29 ng/ml



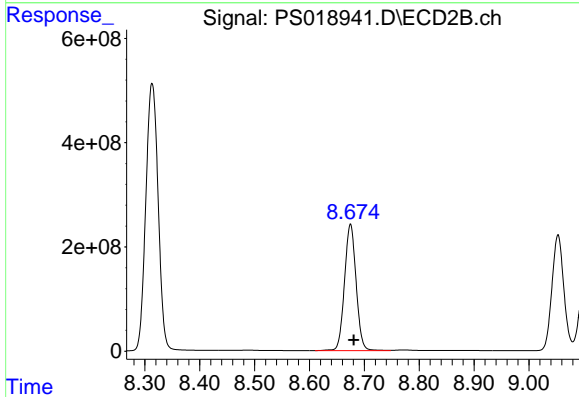
#10 Pentachlorophenol

R.T.: 8.313 min
 Delta R.T.: -0.006 min
 Response: 7963333169
 Conc: 756.74 ng/ml

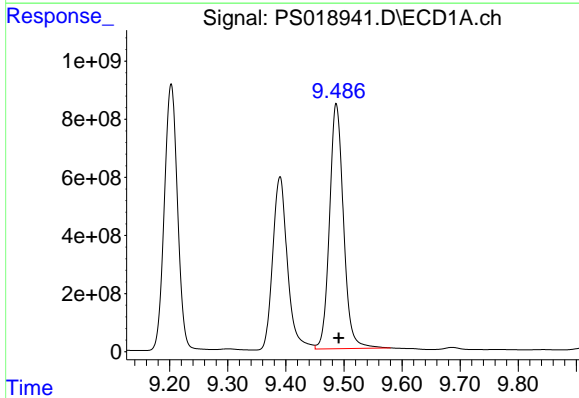


#11 2,4,5-TP (SILVEX)
 R.T.: 9.203 min
 Delta R.T.: -0.004 min
 Response: 14434483030
 Conc: 705.44 ng/ml

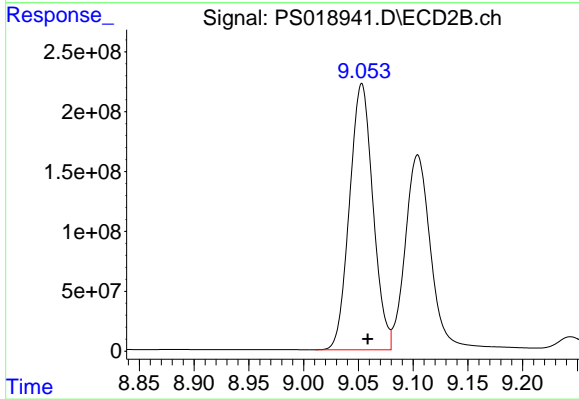
Instrument :
 ECD_S
 ClientSampleId :



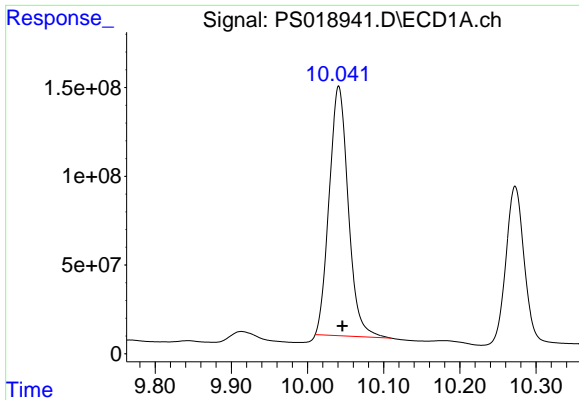
#11 2,4,5-TP (SILVEX)
 R.T.: 8.675 min
 Delta R.T.: -0.006 min
 Response: 3557439684
 Conc: 778.21 ng/ml



#12 2,4,5-T
 R.T.: 9.487 min
 Delta R.T.: -0.005 min
 Response: 14112191259
 Conc: 688.35 ng/ml



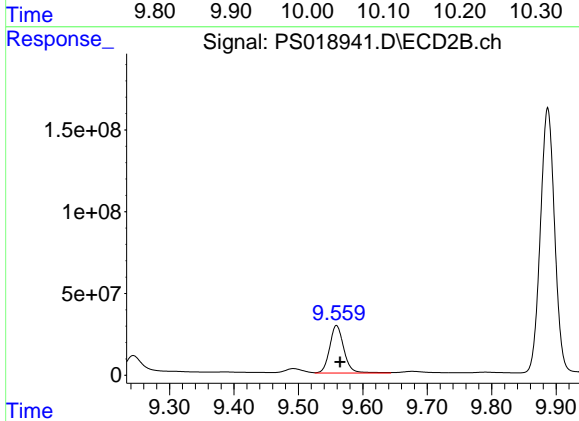
#12 2,4,5-T
 R.T.: 9.053 min
 Delta R.T.: -0.005 min
 Response: 3314846835
 Conc: 796.03 ng/ml



#13 2,4-DB

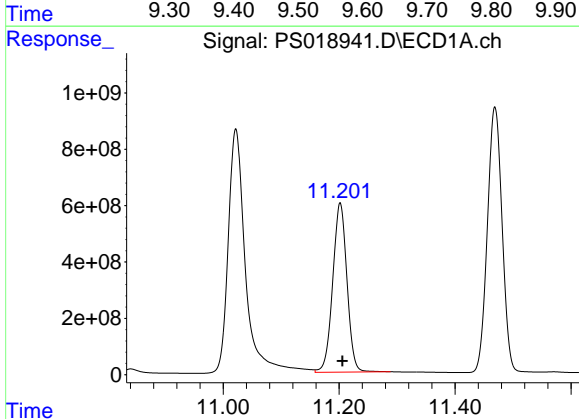
R.T.: 10.041 min
 Delta R.T.: -0.005 min
 Response: 2447146459
 Conc: 720.83 ng/ml

Instrument :
 ECD_S
 ClientSampleId :



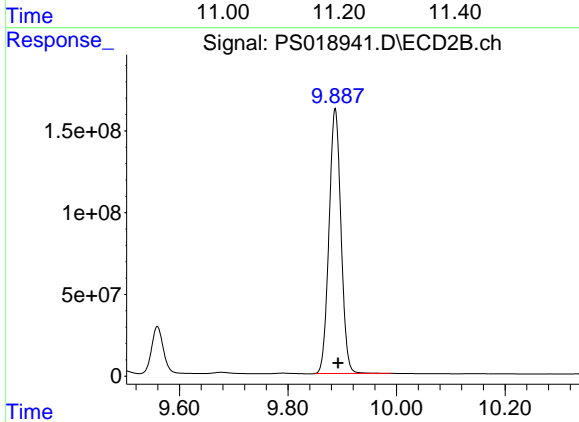
#13 2,4-DB

R.T.: 9.559 min
 Delta R.T.: -0.006 min
 Response: 445572506
 Conc: 782.29 ng/ml



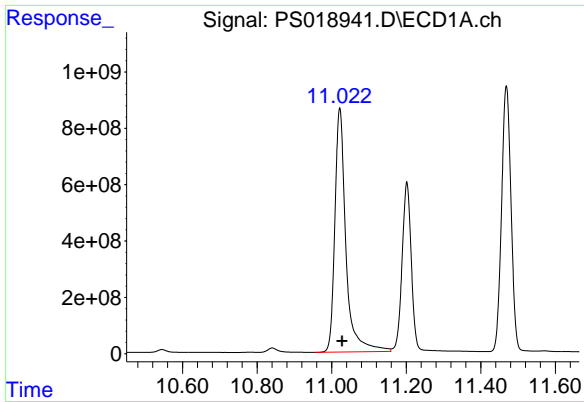
#14 DINOSEB

R.T.: 11.202 min
 Delta R.T.: -0.004 min
 Response: 10203012533
 Conc: 624.94 ng/ml



#14 DINOSEB

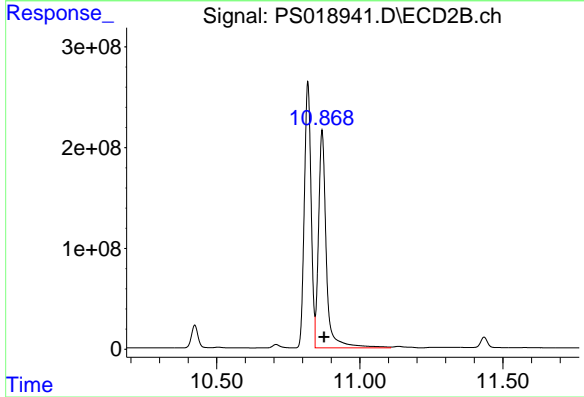
R.T.: 9.887 min
 Delta R.T.: -0.005 min
 Response: 2473751834
 Conc: 767.10 ng/ml



#15 Picloram

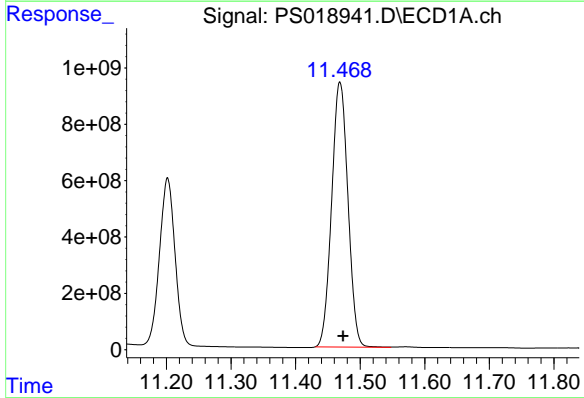
R.T.: 11.022 min
 Delta R.T.: -0.006 min
 Response: 17845062251
 Conc: 637.82 ng/ml

Instrument :
 ECD_S
 ClientSampleId :



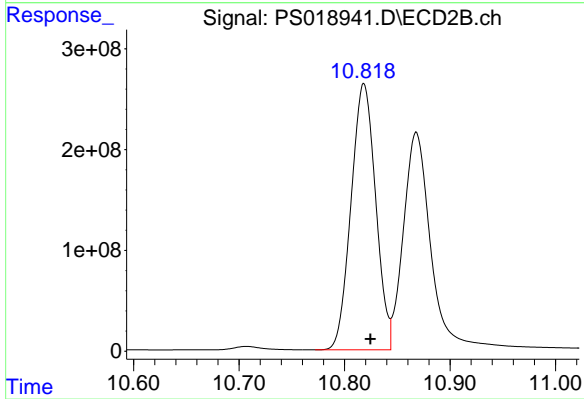
#15 Picloram

R.T.: 10.868 min
 Delta R.T.: -0.007 min
 Response: 4086175080
 Conc: 722.68 ng/ml



#16 DCPA

R.T.: 11.469 min
 Delta R.T.: -0.005 min
 Response: 16490904095
 Conc: 655.18 ng/ml



#16 DCPA

R.T.: 10.818 min
 Delta R.T.: -0.006 min
 Response: 4276859045
 Conc: 784.66 ng/ml