

Data Path : Z:\pestpcbsrv\HPCHEM1\ECD_S\Data\PS040822\
 Data File : PS018944.D
 Signal(s) : Signal #1: ECD1A.ch Signal #2: ECD2B.ch
 Acq On : 08 Apr 2022 12:47
 Operator : AJ\MA
 Sample : HSTDCCC750
 Misc :
 ALS Vial : 3 Sample Multiplier: 1

Instrument :
 ECD_S
ClientSampleId :
 HSTDCCC750

Manual Integrations
APPROVED
 Reviewed By :Abdul Mirza 04/09/2022
 Supervised By :mohammad ahmed 04/11/2022

Integration File signal 1: autoint1.e
 Integration File signal 2: autoint2.e
 Quant Time: Apr 09 00:22:11 2022
 Quant Method : Z:\pestpcbsrv\HPCHEM1\ECD_S\Method\PS033122.M
 Quant Title : 8080.M
 QLast Update : Thu Mar 31 16:06:48 2022
 Response via : Initial Calibration
 Integrator: ChemStation

Volume Inj. : 2 µl
 Signal #1 Phase : Rtx-CLPesticides Signal #2 Phase: Rtx-CLPesticides2
 Signal #1 Info : 30M x 0.32mm x0.5 Signal #2 Info : 30M x 0.32mm x 0.25µm

	Compound	RT#1	RT#2	Resp#1	Resp#2	ng/ml	ng/ml

System Monitoring Compounds							
4) S	2,4-DCAA	7.230	6.804	2463.3E6	486.3E6	843.764	681.144
Target Compounds							
1) T	Dalapon	3.029	2.529	2580.1E6	564.9E6	564.028	609.011
2) T	3,5-DICHL...	6.438	5.978	3159.7E6	698.6E6	787.627	633.579
3) T	4-Nitroph...	7.063	6.419	806.6E6	258.7E6	706.649	608.979
5) T	DICAMBA	7.422	6.970	9340.7E6	2072.2E6	742.914	650.930
6) T	MCP P	7.593	7.068	738.8E6	162.8E6	72.414	63.618
7) T	MCPA	7.742	7.282	999.6E6	225.3E6	70.224	62.890
8) T	DICHLORPROP	8.117	7.593	2323.9E6	527.2E6	697.134	641.140
9) T	2,4-D	8.348	7.886	2742.8E6	605.3E6	686.342	654.948
10) T	Pentachlo...	8.656	8.314	30639.6E6	6935.4E6	684.813	659.059
11) T	2,4,5-TP ...	9.209	8.676	12661.8E6	3039.3E6	618.811	664.873
12) T	2,4,5-T	9.494	9.054	12503.3E6	2816.4E6	609.877m	676.333
13) T	2,4-DB	10.049	9.561	2173.5E6	379.5E6	640.241	666.261
14) T	DINOSEB	11.208	9.888	9864.3E6	2109.8E6	604.195m	654.243
15) T	Picloram	11.031	10.871	17415.2E6	3880.8E6	622.460	686.362
16) T	DCPA	11.477	10.820	14866.0E6	3656.6E6	590.626	670.861

(f)=RT Delta > 1/2 Window (#)=Amounts differ by > 25% (m)=manual int.

Data Path : Z:\pestpcbsrv\HPCHEM1\ECD_S\Data\PS040822\
 Data File : PS018944.D
 Signal(s) : Signal #1: ECD1A.ch Signal #2: ECD2B.ch
 Acq On : 08 Apr 2022 12:47
 Operator : AJ\MA
 Sample : HSTDCCC750
 Misc :
 ALS Vial : 3 Sample Multiplier: 1

Instrument :

ECD_S

ClientSampleId :

HSTDCCC750

Manual Integrations

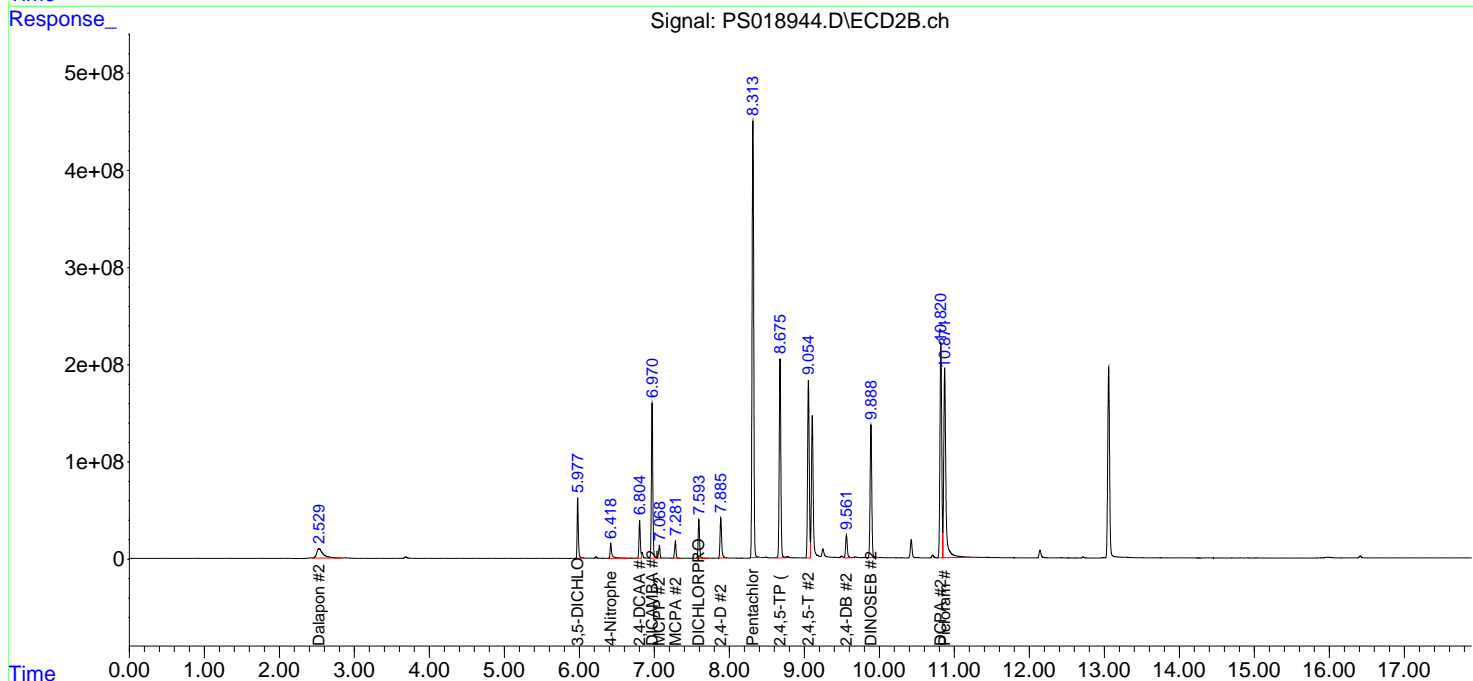
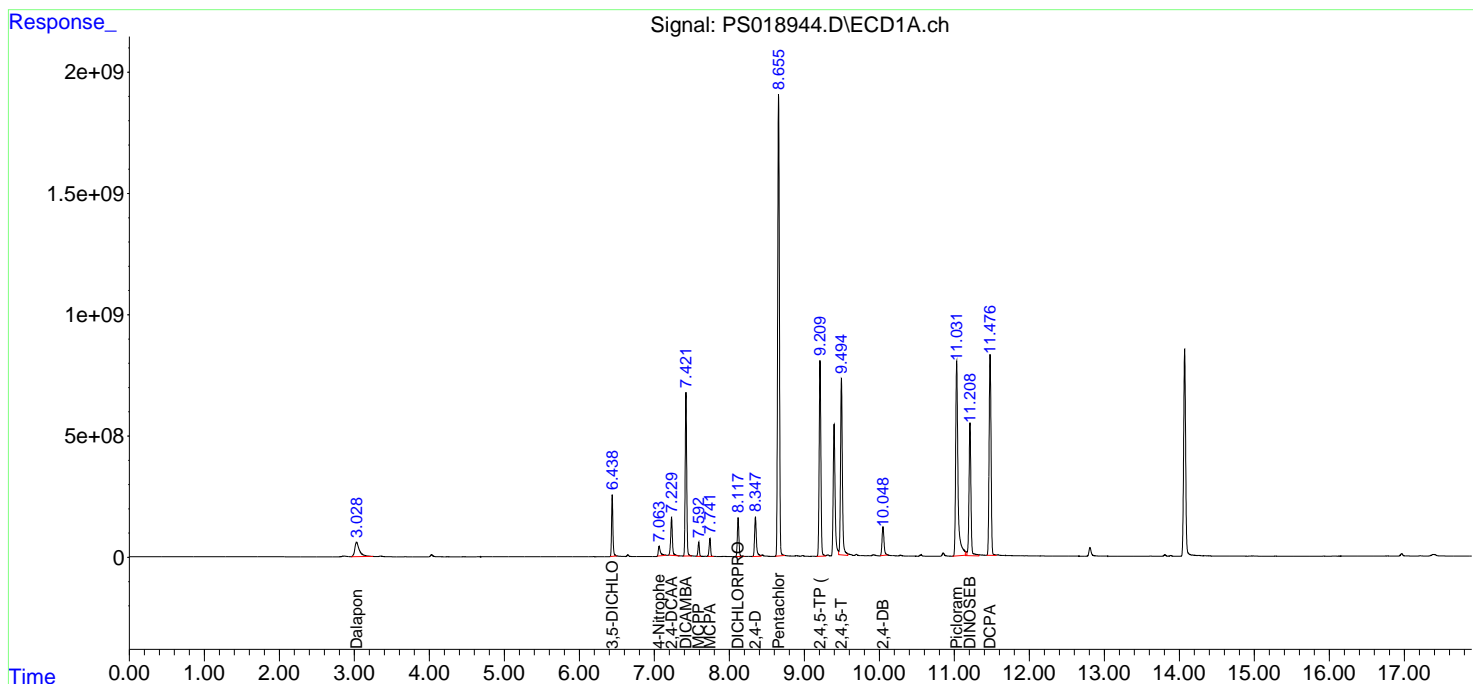
APPROVED

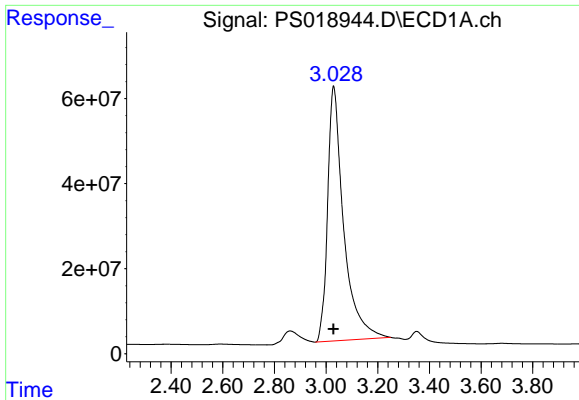
Reviewed By :Abdul Mirza 04/09/2022

Supervised By :mohammad ahmed 04/11/2022

Integration File signal 1: autoint1.e
 Integration File signal 2: autoint2.e
 Quant Time: Apr 09 00:22:11 2022
 Quant Method : Z:\pestpcbsrv\HPCHEM1\ECD_S\Method\PS033122.M
 Quant Title : 8080.M
 QLast Update : Thu Mar 31 16:06:48 2022
 Response via : Initial Calibration
 Integrator: ChemStation

Volume Inj. : 2 µl
 Signal #1 Phase : Rtx-CLPesticides Signal #2 Phase: Rtx-CLPesticides2
 Signal #1 Info : 30M x 0.32mm x0.5 Signal #2 Info : 30M x 0.32mm x 0.25µm





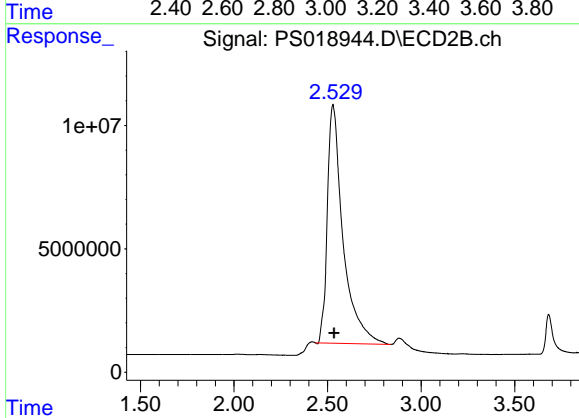
#1 Dalapon

R.T.: 3.029 min
 Delta R.T.: 0.000 min
 Response: 2580126425
 Conc: 564.03 ng/ml

Instrument :
 ECD_S
 ClientSampleId :
 HSTDCCC750

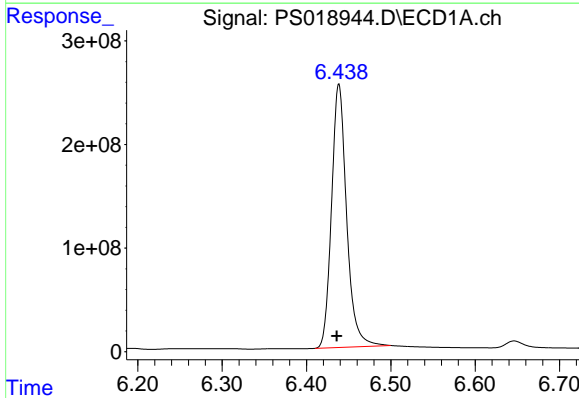
Manual Integrations
 APPROVED

Reviewed By :Abdul Mirza 04/09/2022
 Supervised By :mohammad ahmed 04/11/2022



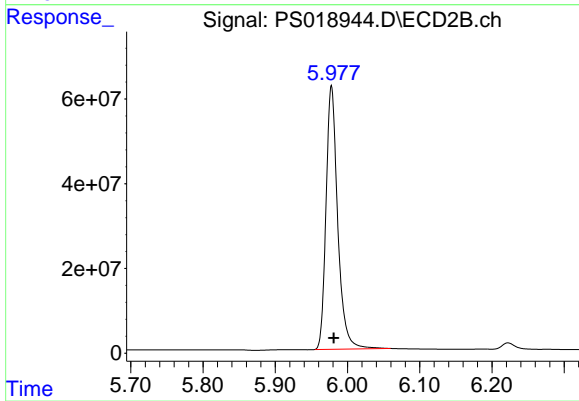
#1 Dalapon

R.T.: 2.529 min
 Delta R.T.: -0.005 min
 Response: 564872236
 Conc: 609.01 ng/ml



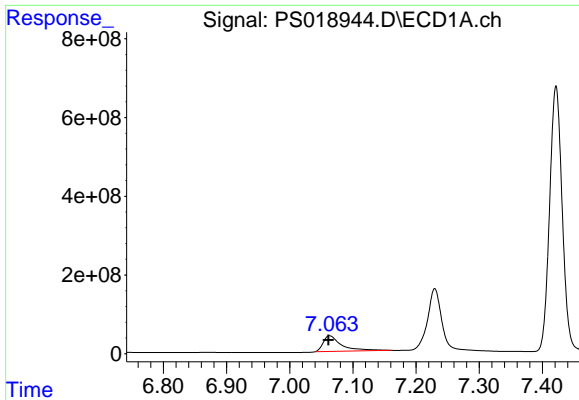
#2 3,5-DICHLOROBENZOIC ACID

R.T.: 6.438 min
 Delta R.T.: 0.003 min
 Response: 3159680326
 Conc: 787.63 ng/ml



#2 3,5-DICHLOROBENZOIC ACID

R.T.: 5.978 min
 Delta R.T.: -0.003 min
 Response: 698598589
 Conc: 633.58 ng/ml



#3 4-Nitrophenol

R.T.: 7.063 min
 Delta R.T.: 0.002 min
 Response: 806642109
 Conc: 706.65 ng/ml

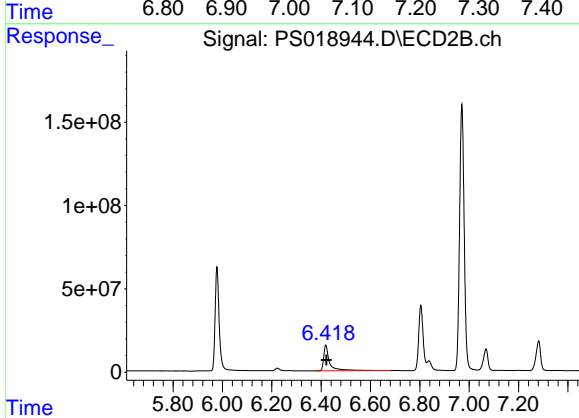
Instrument :

ECD_S

ClientSampleId :
 HSTDCCC750

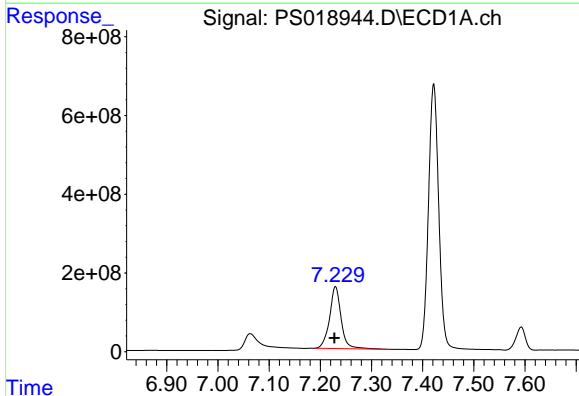
Manual Integrations
 APPROVED

Reviewed By :Abdul Mirza 04/09/2022
 Supervised By :mohammad ahmed 04/11/2022



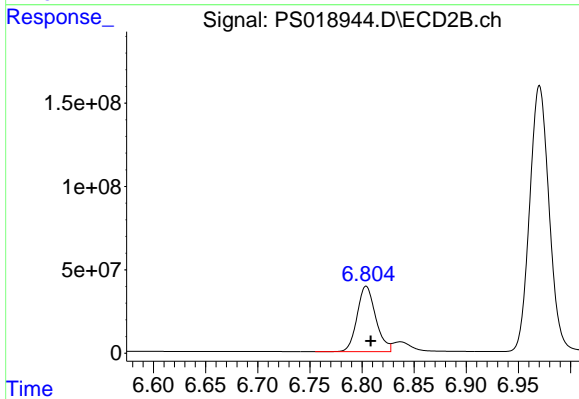
#3 4-Nitrophenol

R.T.: 6.419 min
 Delta R.T.: -0.003 min
 Response: 258676060
 Conc: 608.98 ng/ml



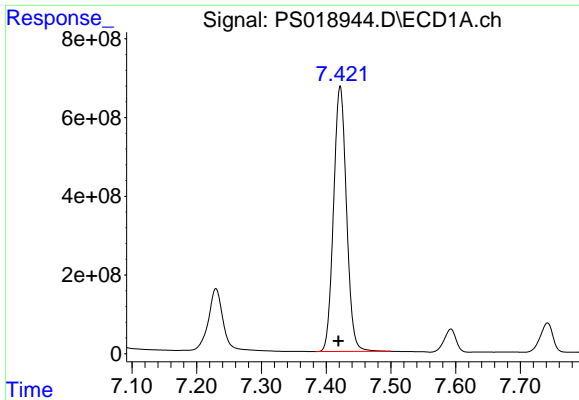
#4 2,4-DCAA

R.T.: 7.230 min
 Delta R.T.: 0.002 min
 Response: 2463334958
 Conc: 843.76 ng/ml



#4 2,4-DCAA

R.T.: 6.804 min
 Delta R.T.: -0.004 min
 Response: 486297675
 Conc: 681.14 ng/ml



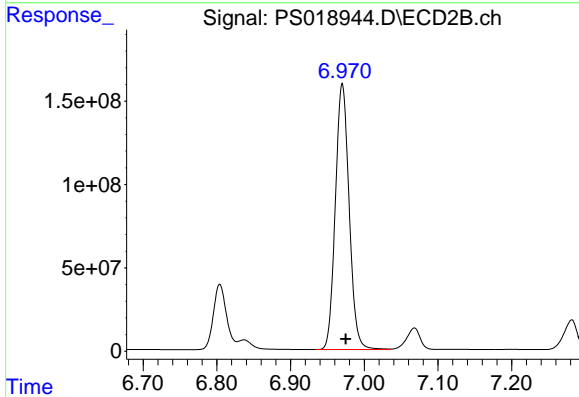
#5 DICAMBA

R.T.: 7.422 min
 Delta R.T.: 0.003 min
 Response: 9340706445
 Conc: 742.91 ng/ml

Instrument :
 ECD_S
 ClientSampleId :
 HSTDCCC750

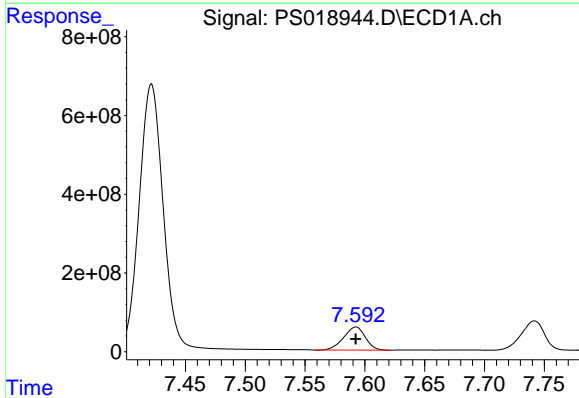
Manual Integrations
 APPROVED

Reviewed By :Abdul Mirza 04/09/2022
 Supervised By :mohammad ahmed 04/11/2022



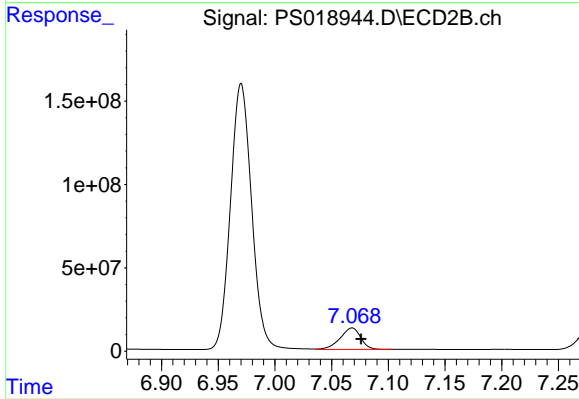
#5 DICAMBA

R.T.: 6.970 min
 Delta R.T.: -0.005 min
 Response: 2072178555
 Conc: 650.93 ng/ml



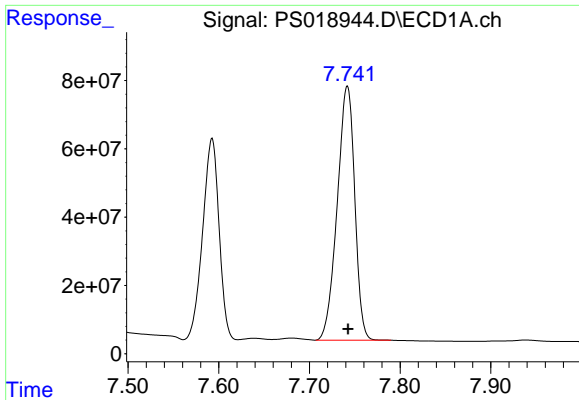
#6 MCPP

R.T.: 7.593 min
 Delta R.T.: 0.000 min
 Response: 738812382
 Conc: 72.41 ug/ml



#6 MCPP

R.T.: 7.068 min
 Delta R.T.: -0.008 min
 Response: 162766195
 Conc: 63.62 ug/ml



#7 MCPA

R.T.: 7.742 min
 Delta R.T.: 0.000 min
 Response: 999572174
 Conc: 70.22 ug/ml

Instrument :

ECD_S

ClientSampleId :

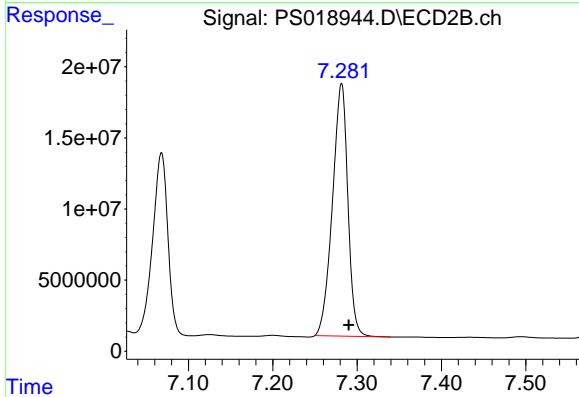
HSTDCCC750

Manual Integrations

APPROVED

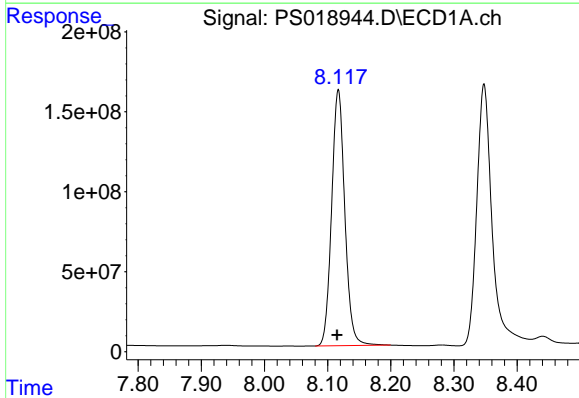
Reviewed By :Abdul Mirza 04/09/2022

Supervised By :mohammad ahmed 04/11/2022



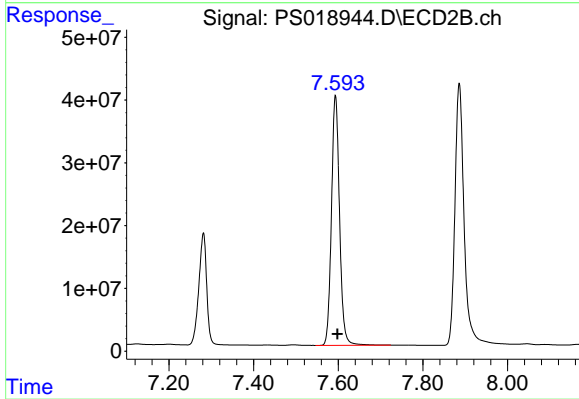
#7 MCPA

R.T.: 7.282 min
 Delta R.T.: -0.009 min
 Response: 225318236
 Conc: 62.89 ug/ml



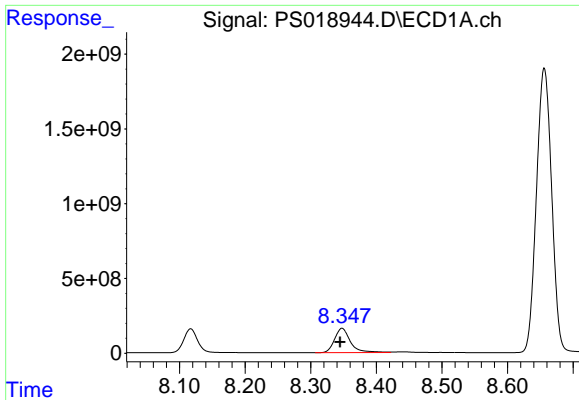
#8 DICHLORPROP

R.T.: 8.117 min
 Delta R.T.: 0.002 min
 Response: 2323899488
 Conc: 697.13 ng/ml



#8 DICHLORPROP

R.T.: 7.593 min
 Delta R.T.: -0.005 min
 Response: 527245589
 Conc: 641.14 ng/ml



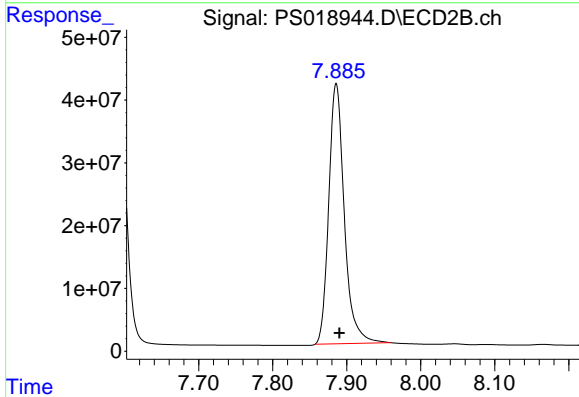
#9 2,4-D

R.T.: 8.348 min
 Delta R.T.: 0.003 min
 Response: 2742778917
 Conc: 686.34 ng/ml

Instrument :
 ECD_S
 ClientSampleId :
 HSTDCCC750

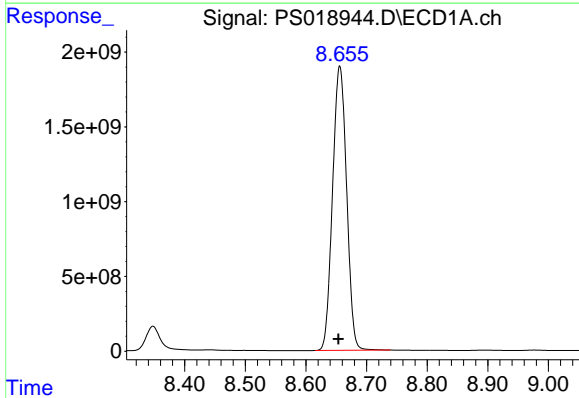
Manual Integrations
 APPROVED

Reviewed By :Abdul Mirza 04/09/2022
 Supervised By :mohammad ahmed 04/11/2022



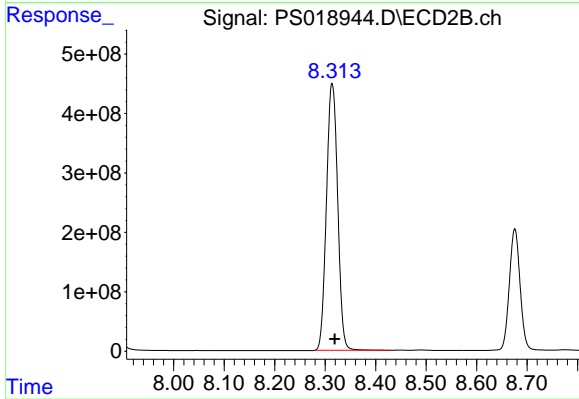
#9 2,4-D

R.T.: 7.886 min
 Delta R.T.: -0.004 min
 Response: 605323331
 Conc: 654.95 ng/ml



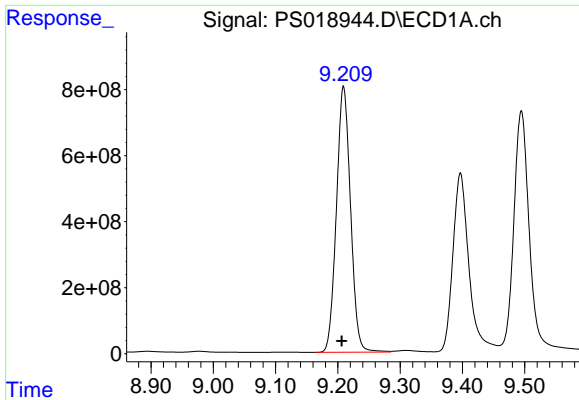
#10 Pentachlorophenol

R.T.: 8.656 min
 Delta R.T.: 0.002 min
 Response: 30639601932
 Conc: 684.81 ng/ml



#10 Pentachlorophenol

R.T.: 8.314 min
 Delta R.T.: -0.005 min
 Response: 6935374862
 Conc: 659.06 ng/ml



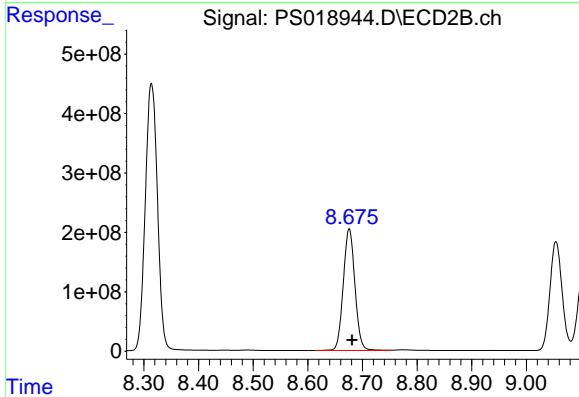
#11 2,4,5-TP (SILVEX)

R.T.: 9.209 min
 Delta R.T.: 0.003 min
 Response: 12661831417
 Conc: 618.81 ng/ml

Instrument :
 ECD_S
 ClientSampleId :
 HSTDCCC750

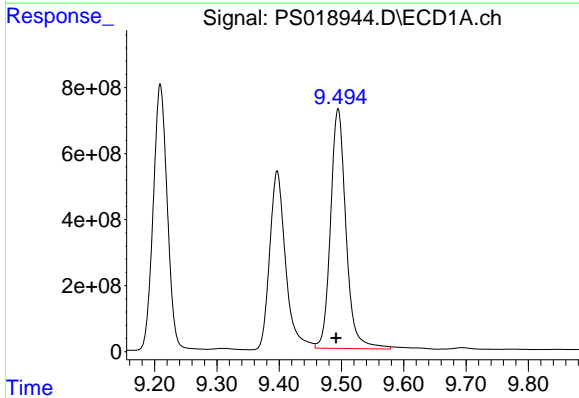
Manual Integrations
 APPROVED

Reviewed By :Abdul Mirza 04/09/2022
 Supervised By :mohammad ahmed 04/11/2022



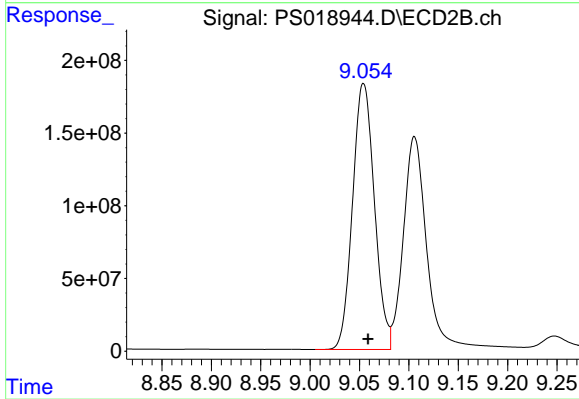
#11 2,4,5-TP (SILVEX)

R.T.: 8.676 min
 Delta R.T.: -0.005 min
 Response: 3039337219
 Conc: 664.87 ng/ml



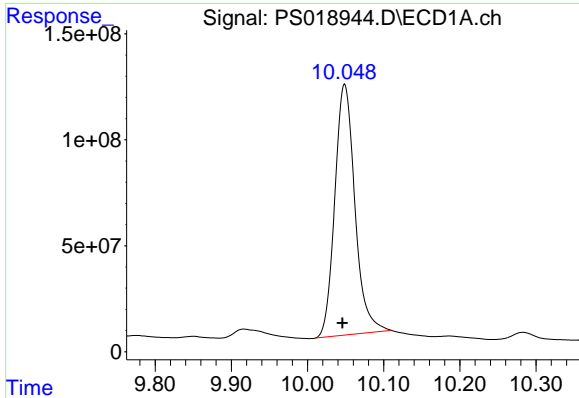
#12 2,4,5-T

R.T.: 9.494 min
 Delta R.T.: 0.003 min
 Response: 12503302047
 Conc: 609.88 ng/ml m



#12 2,4,5-T

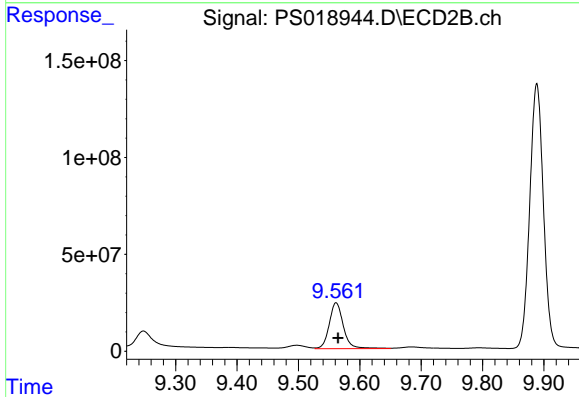
R.T.: 9.054 min
 Delta R.T.: -0.005 min
 Response: 2816400213
 Conc: 676.33 ng/ml



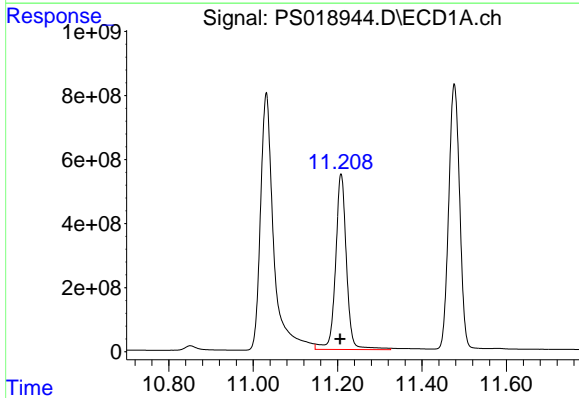
#13 2,4-DB
 R.T.: 10.049 min
 Delta R.T.: 0.003 min
 Response: 2173547728
 Conc: 640.24 ng/ml

Instrument : ECD_S
 Client Sample Id : HSTDCCC750

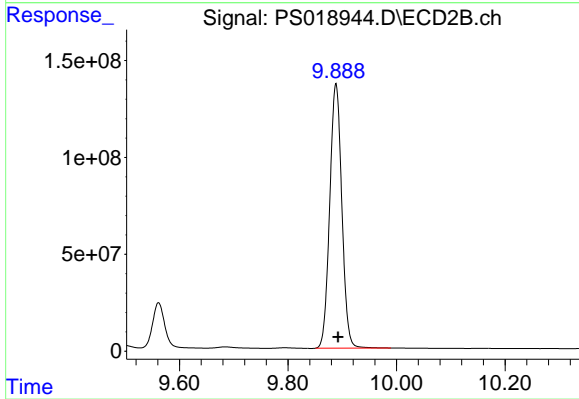
Manual Integrations
APPROVED
 Reviewed By :Abdul Mirza 04/09/2022
 Supervised By :mohammad ahmed 04/11/2022



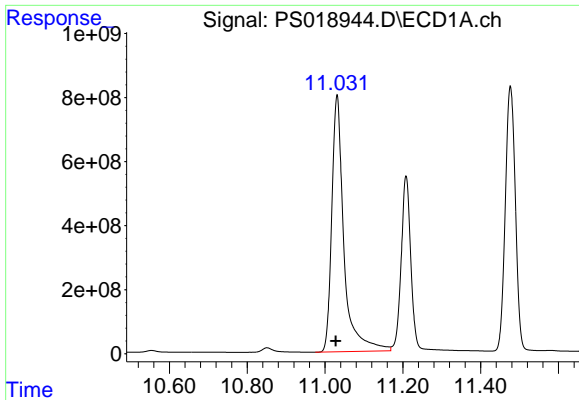
#13 2,4-DB
 R.T.: 9.561 min
 Delta R.T.: -0.003 min
 Response: 379485406
 Conc: 666.26 ng/ml



#14 DINOSEB
 R.T.: 11.208 min
 Delta R.T.: 0.002 min
 Response: 9864301799
 Conc: 604.20 ng/ml m



#14 DINOSEB
 R.T.: 9.888 min
 Delta R.T.: -0.004 min
 Response: 2109815862
 Conc: 654.24 ng/ml



#15 Picloram

R.T.: 11.031 min
 Delta R.T.: 0.004 min
 Response: 17415231890
 Conc: 622.46 ng/ml

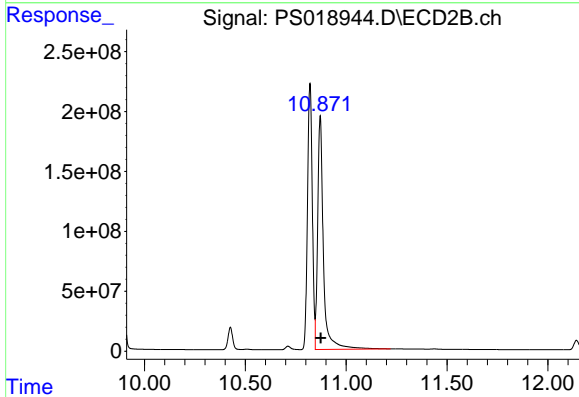
Instrument :

ECD_S

ClientSampleId :
 HSTDCCC750

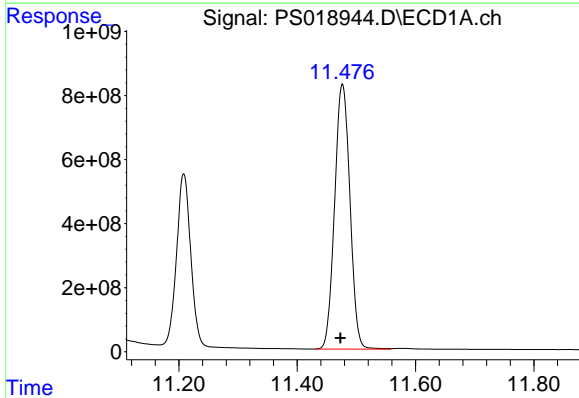
Manual Integrations
 APPROVED

Reviewed By :Abdul Mirza 04/09/2022
 Supervised By :mohammad ahmed 04/11/2022



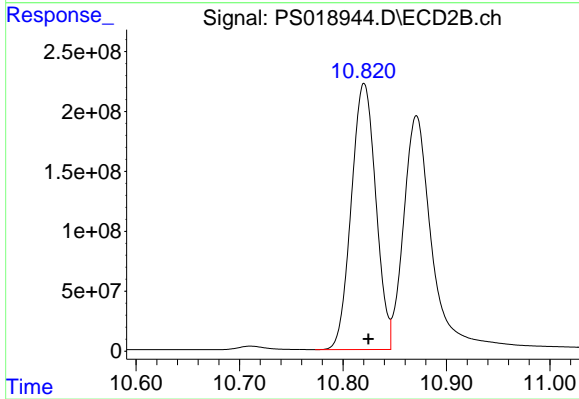
#15 Picloram

R.T.: 10.871 min
 Delta R.T.: -0.004 min
 Response: 3880841351
 Conc: 686.36 ng/ml



#16 DCPA

R.T.: 11.477 min
 Delta R.T.: 0.003 min
 Response: 14866016684
 Conc: 590.63 ng/ml



#16 DCPA

R.T.: 10.820 min
 Delta R.T.: -0.004 min
 Response: 3656610974
 Conc: 670.86 ng/ml