

Data Path : Z:\pestpcbsrv\HPCHEM1\ECD_S\Data\PS040825\
 Data File : PS029741.D
 Signal(s) : Signal #1: ECD1A.ch Signal #2: ECD2B.ch
 Acq On : 08 Apr 2025 23:03
 Operator : AR\AJ
 Sample : Q1730-09
 Misc :
 ALS Vial : 15 Sample Multiplier: 1

Instrument :
 ECD_S
 ClientSampleId :
 OU4-PCS-TC-22-040325

Integration File signal 1: autoint1.e
 Integration File signal 2: autoint2.e
 Quant Time: Apr 09 03:14:10 2025
 Quant Method : Z:\pestpcbsrv\HPCHEM1\ECD_S\Method\PS040225.M
 Quant Title : 8080.M
 QLast Update : Wed Apr 02 23:52:55 2025
 Response via : Initial Calibration
 Integrator: ChemStation

Volume Inj. : 1 µl
 Signal #1 Phase : ZB-MR2 Signal #2 Phase: ZB-MR2
 Signal #1 Info : 30M x 0.32mm x0.5 Signal #2 Info : 30M x 0.32mm x 0.25µm

	Compound	RT#1	RT#2	Resp#1	Resp#2	ng/ml	ng/ml

System Monitoring Compounds							
4) S	2,4-DCAA	6.953	7.468	979.6E6	288.7E6	480.461	423.658
Target Compounds							
1) T	Dalapon	2.429f	2.507f	129.2E6	66165337	38.087	41.676
2) T	3,5-DICHL...	6.136f	6.475	27659778	6082550	9.196	6.300 #
3) T	4-Nitroph...	6.766	6.974f	21470083	11144943	15.283	15.719
5) T	DICAMBA	7.147	7.634f	34312149	10737758	4.123	2.907 #
6) T	MCP P	7.351f	7.744	107.2E6	5123025	19.785	3.034 #
7) T	MCPA	7.463	7.974	9541388	43823094	1.313	19.261 #
8) T	DICHLORPROP	7.813	8.371	36075221	92149961	16.402	95.378 #
9) T	2,4-D	8.036	8.687	65102406	3498555	27.018	3.244 #
10) T	Pentachlo...	8.306	9.162	49350720	12098483	1.623	<MDL #
11) T	2,4,5-TP ...	0.000	9.551	0	29961490	N.D.	4.154
12) T	2,4,5-T	9.203f	9.975	63369373	87706273	5.508	13.085 #
13) T	2,4-DB	9.739	10.488f	292.0E6	37789622	160.718	50.931 #
14) T	DINOSEB	10.912	10.853f	208.5E6	53577167	24.698	10.479 #
15) T	Picloram	10.697	11.920	182.3E6	82786032	11.760	7.001 #
16) T	DCPA	11.176	11.920	121.0E6	82786032	8.667	9.354

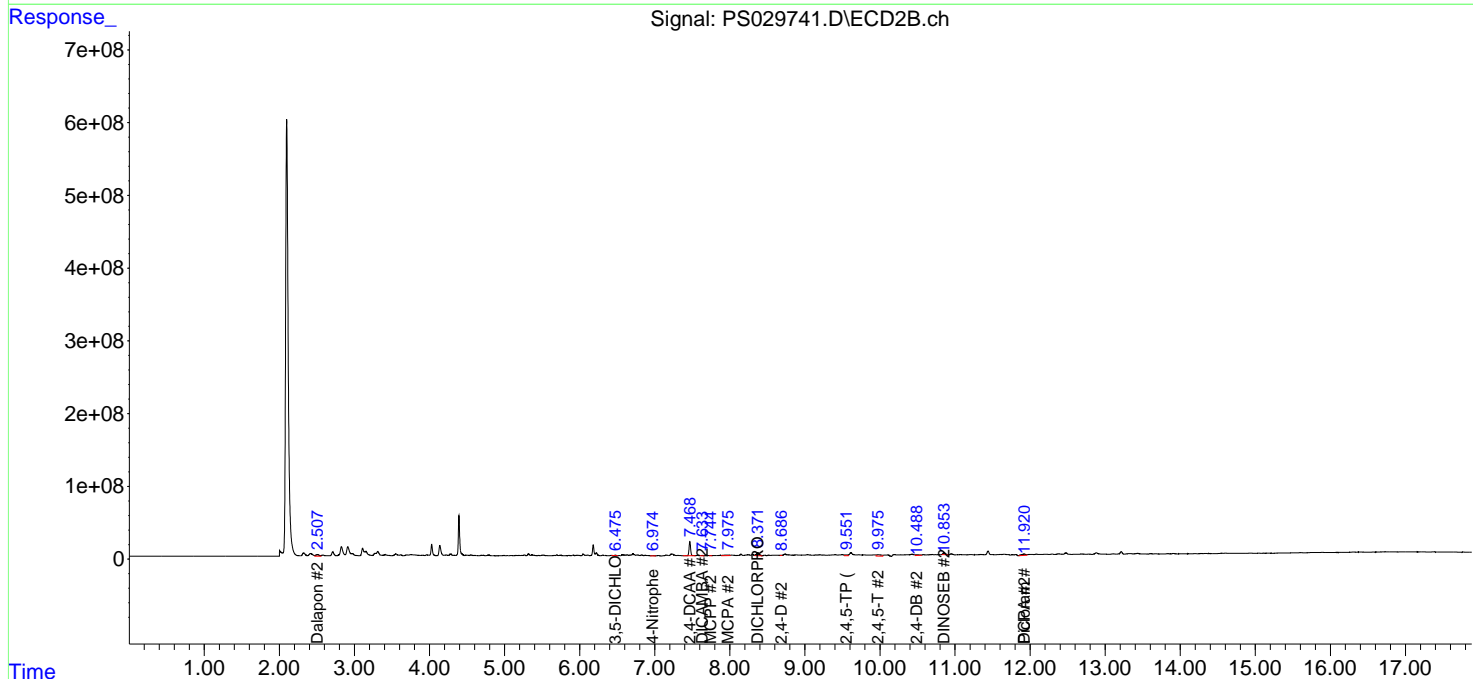
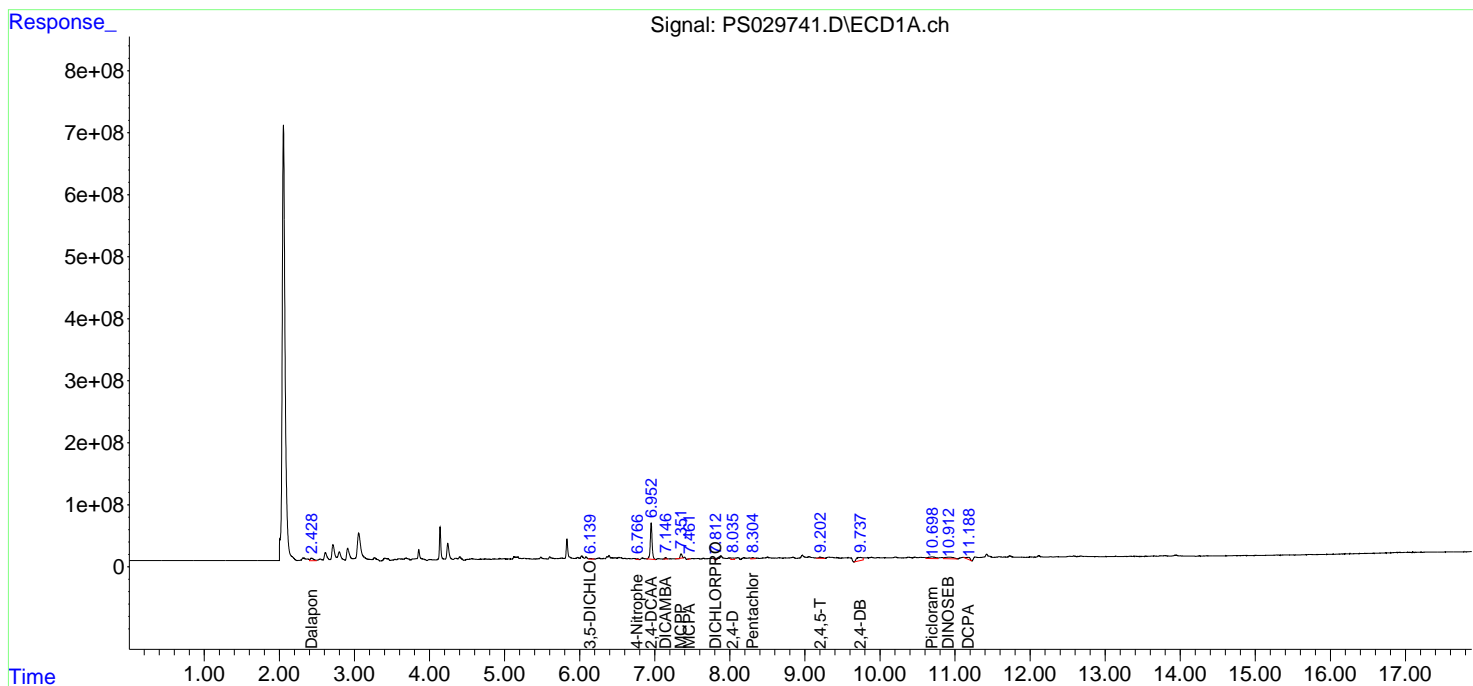
(f)=RT Delta > 1/2 Window (#)=Amounts differ by > 25% (m)=manual int.

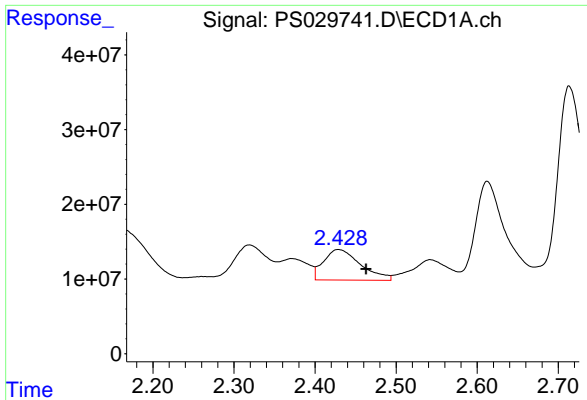
Data Path : Z:\pestpcbsrv\HPCHEM1\ECD_S\Data\PS040825\
 Data File : PS029741.D
 Signal(s) : Signal #1: ECD1A.ch Signal #2: ECD2B.ch
 Acq On : 08 Apr 2025 23:03
 Operator : AR\AJ
 Sample : Q1730-09
 Misc :
 ALS Vial : 15 Sample Multiplier: 1

Instrument :
 ECD_S
 ClientSampleId :
 OU4-PCS-TC-22-040325

Integration File signal 1: autoint1.e
 Integration File signal 2: autoint2.e
 Quant Time: Apr 09 03:14:10 2025
 Quant Method : Z:\pestpcbsrv\HPCHEM1\ECD_S\Method\PS040225.M
 Quant Title : 8080.M
 QLast Update : Wed Apr 02 23:52:55 2025
 Response via : Initial Calibration
 Integrator: ChemStation

Volume Inj. : 1 µl
 Signal #1 Phase : ZB-MR1 Signal #2 Phase: ZB-MR2
 Signal #1 Info : 30M x 0.32mm x0.5 Signal #2 Info : 30M x 0.32mm x 0.25µm

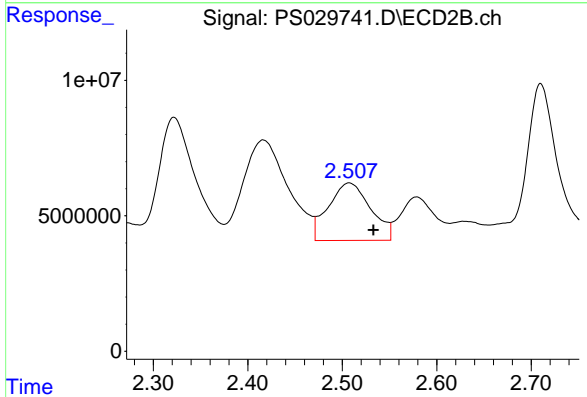




#1 Dalapon

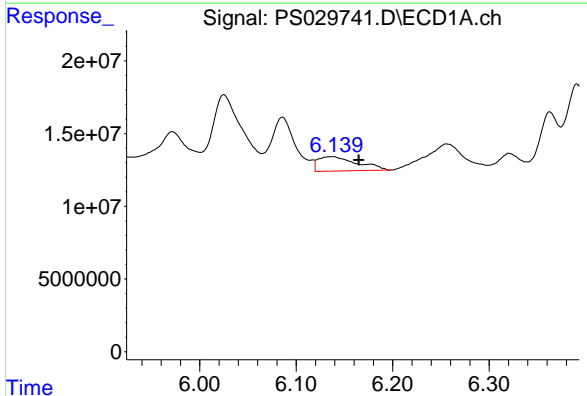
R.T.: 2.429 min
 Delta R.T.: -0.034 min
 Response: 129204992
 Conc: 38.09 ng/ml

Instrument :
 ECD_S
 ClientSampleId :
 OU4-PCS-TC-22-040325



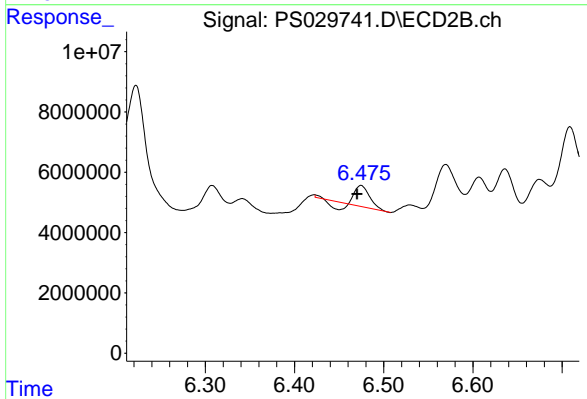
#1 Dalapon

R.T.: 2.507 min
 Delta R.T.: -0.026 min
 Response: 66165337
 Conc: 41.68 ng/ml



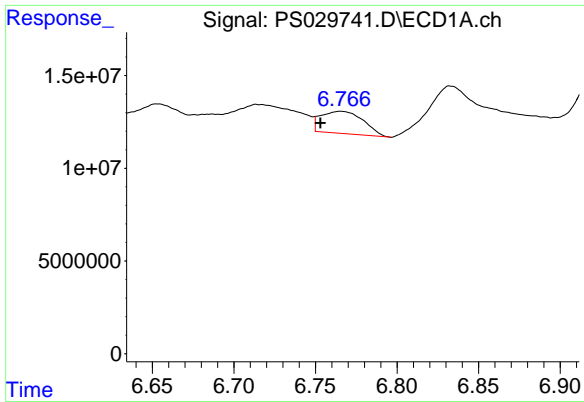
#2 3,5-DICHLOROBENZOIC ACID

R.T.: 6.136 min
 Delta R.T.: -0.028 min
 Response: 27659778
 Conc: 9.20 ng/ml



#2 3,5-DICHLOROBENZOIC ACID

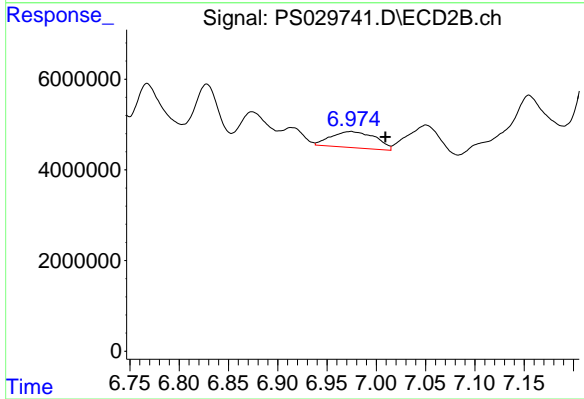
R.T.: 6.475 min
 Delta R.T.: 0.004 min
 Response: 6082550
 Conc: 6.30 ng/ml



#3 4-Nitrophenol

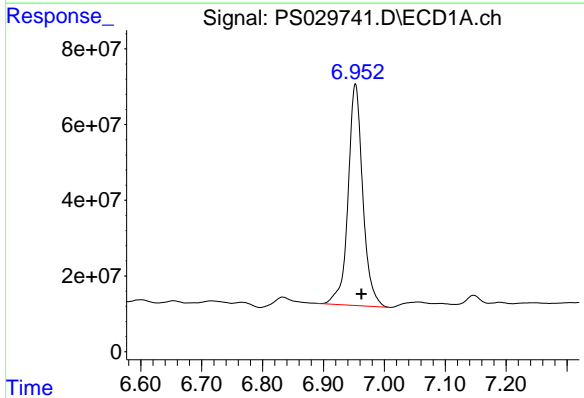
R.T.: 6.766 min
 Delta R.T.: 0.012 min
 Response: 21470083
 Conc: 15.28 ng/ml

Instrument :
 ECD_S
 ClientSampleId :
 OU4-PCS-TC-22-040325



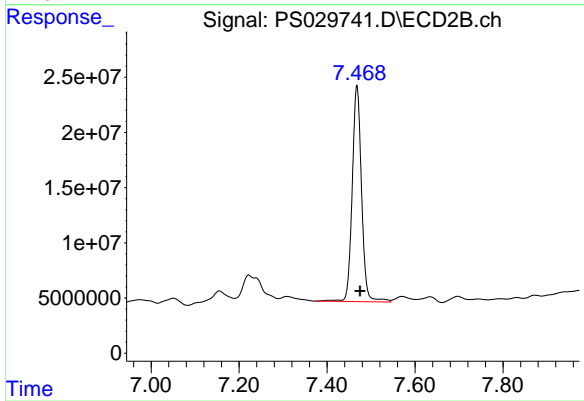
#3 4-Nitrophenol

R.T.: 6.974 min
 Delta R.T.: -0.035 min
 Response: 11144943
 Conc: 15.72 ng/ml



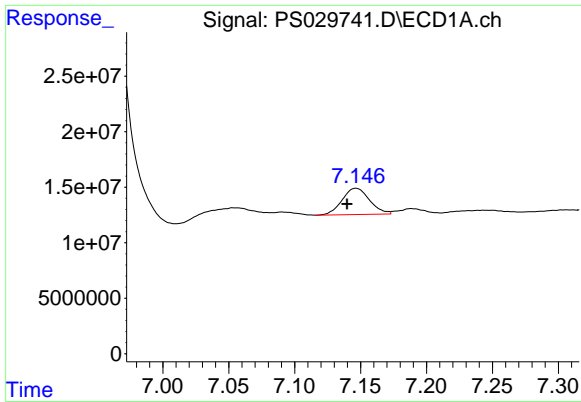
#4 2,4-DCAA

R.T.: 6.953 min
 Delta R.T.: -0.010 min
 Response: 979578183
 Conc: 480.46 ng/ml



#4 2,4-DCAA

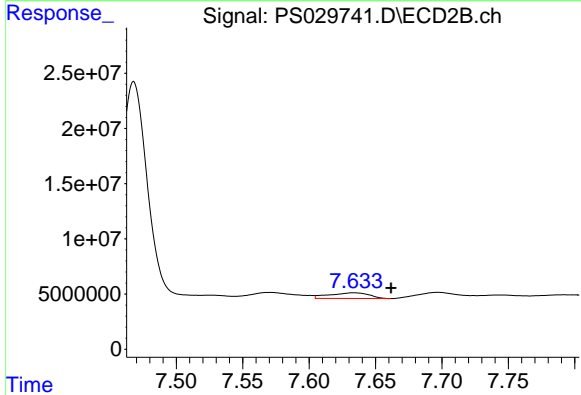
R.T.: 7.468 min
 Delta R.T.: -0.007 min
 Response: 288728161
 Conc: 423.66 ng/ml



#5 DICAMBA

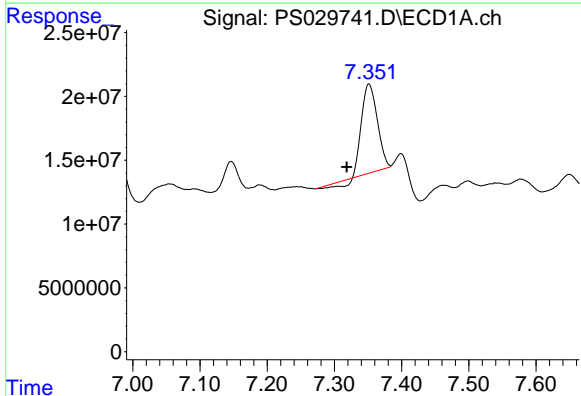
R.T.: 7.147 min
 Delta R.T.: 0.007 min
 Response: 34312149
 Conc: 4.12 ng/ml

Instrument :
 ECD_S
 ClientSampleId :
 OU4-PCS-TC-22-040325



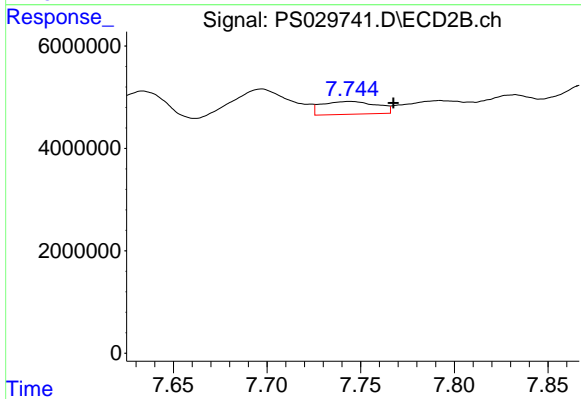
#5 DICAMBA

R.T.: 7.634 min
 Delta R.T.: -0.028 min
 Response: 10737758
 Conc: 2.91 ng/ml



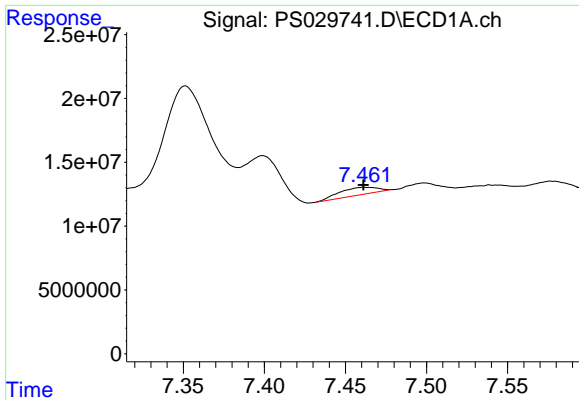
#6 MCP

R.T.: 7.351 min
 Delta R.T.: 0.033 min
 Response: 107231379
 Conc: 19.78 ug/ml



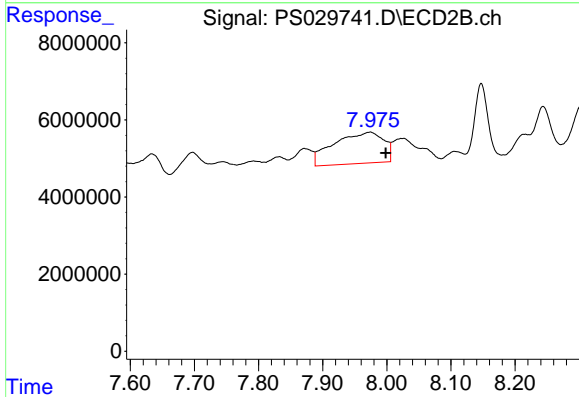
#6 MCP

R.T.: 7.744 min
 Delta R.T.: -0.024 min
 Response: 5123025
 Conc: 3.03 ug/ml

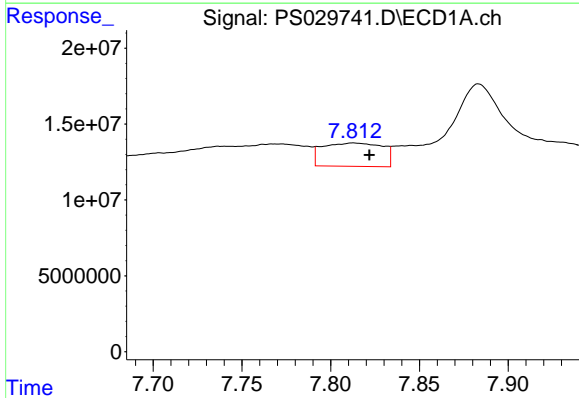


#7 MCPA
 R.T.: 7.463 min
 Delta R.T.: 0.002 min
 Response: 9541388
 Conc: 1.31 ug/ml

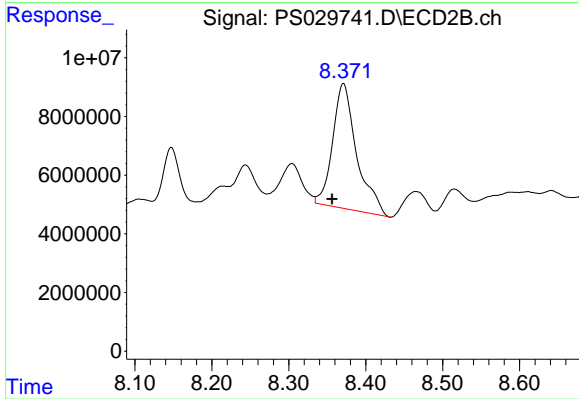
Instrument :
 ECD_S
 ClientSampleId :
 OU4-PCS-TC-22-040325



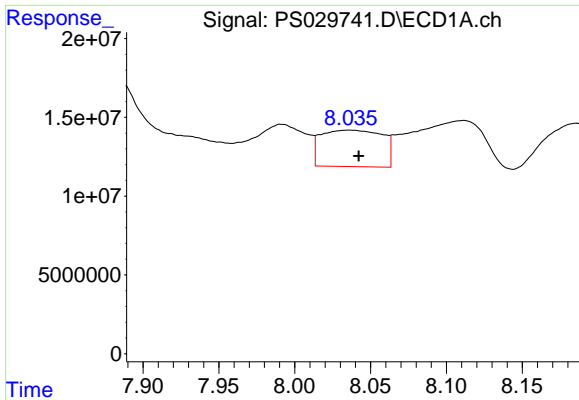
#7 MCPA
 R.T.: 7.974 min
 Delta R.T.: -0.025 min
 Response: 43823094
 Conc: 19.26 ug/ml



#8 DICHLORPROP
 R.T.: 7.813 min
 Delta R.T.: -0.009 min
 Response: 36075221
 Conc: 16.40 ng/ml



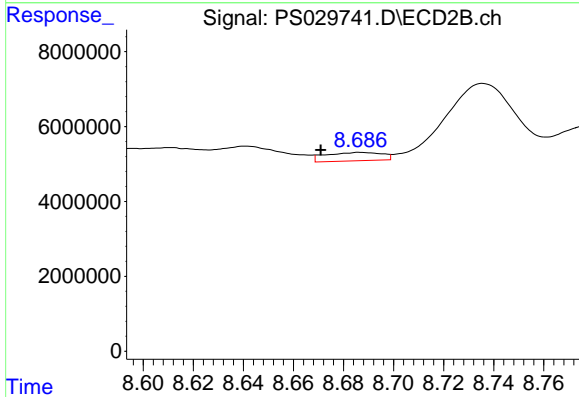
#8 DICHLORPROP
 R.T.: 8.371 min
 Delta R.T.: 0.015 min
 Response: 92149961
 Conc: 95.38 ng/ml



#9 2,4-D

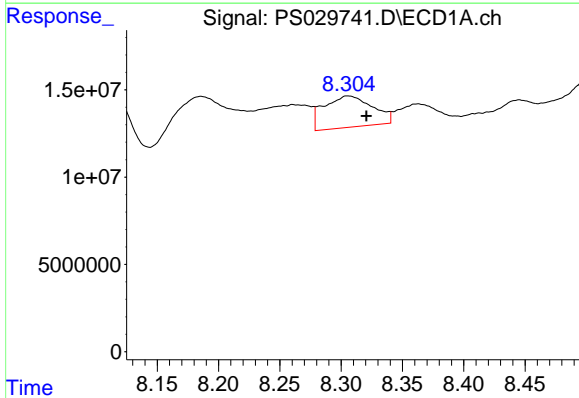
R.T.: 8.036 min
 Delta R.T.: -0.006 min
 Response: 65102406
 Conc: 27.02 ng/ml

Instrument :
 ECD_S
 ClientSampleId :
 OU4-PCS-TC-22-040325



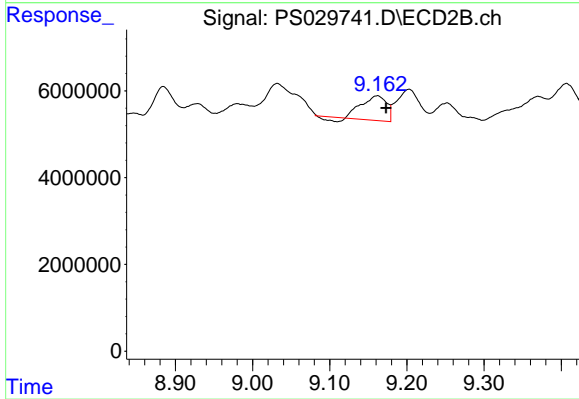
#9 2,4-D

R.T.: 8.687 min
 Delta R.T.: 0.016 min
 Response: 3498555
 Conc: 3.24 ng/ml



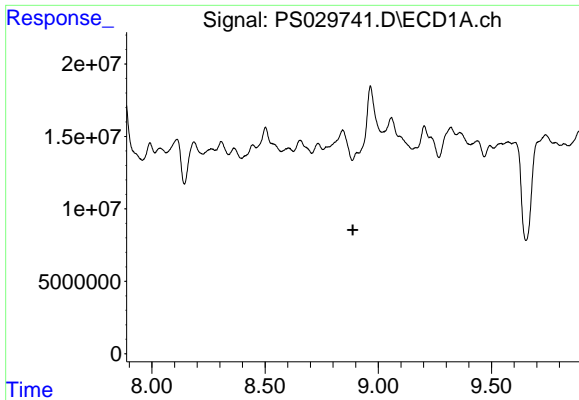
#10 Pentachlorophenol

R.T.: 8.306 min
 Delta R.T.: -0.014 min
 Response: 49350720
 Conc: 1.62 ng/ml



#10 Pentachlorophenol

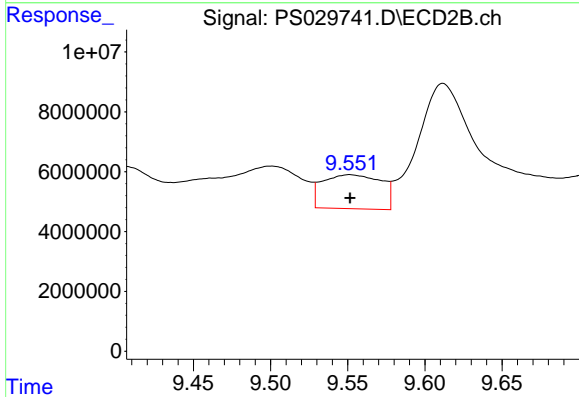
R.T.: 9.162 min
 Delta R.T.: -0.012 min
 Response: 12098483
 Conc: N.D.



#11 2,4,5-TP (SILVEX)

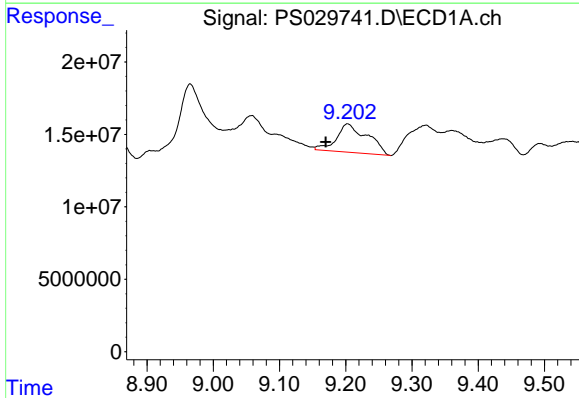
R.T.: 0.000 min
 Exp R.T.: 8.888 min
 Response: 0
 Conc: N.D.

Instrument :
 ECD_S
 ClientSampleId :
 OU4-PCS-TC-22-040325



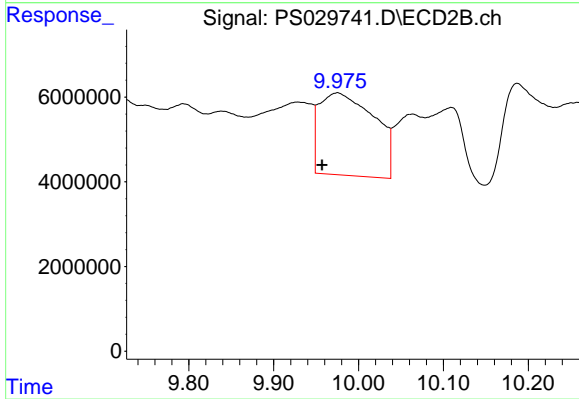
#11 2,4,5-TP (SILVEX)

R.T.: 9.551 min
 Delta R.T.: 0.000 min
 Response: 29961490
 Conc: 4.15 ng/ml



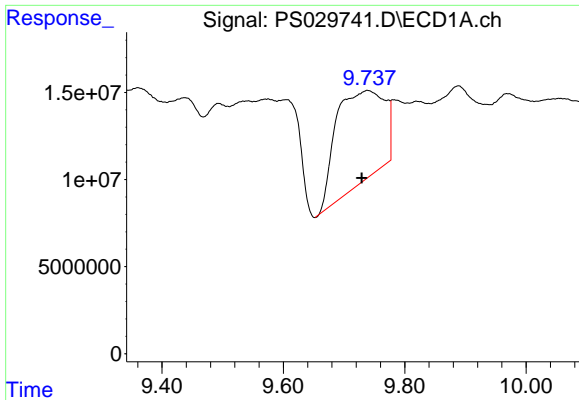
#12 2,4,5-T

R.T.: 9.203 min
 Delta R.T.: 0.033 min
 Response: 63369373
 Conc: 5.51 ng/ml



#12 2,4,5-T

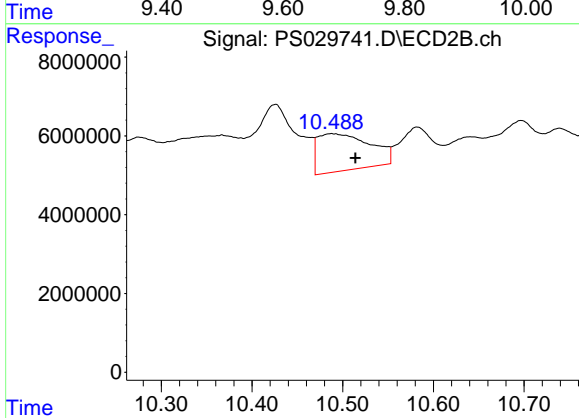
R.T.: 9.975 min
 Delta R.T.: 0.018 min
 Response: 87706273
 Conc: 13.08 ng/ml



#13 2,4-DB

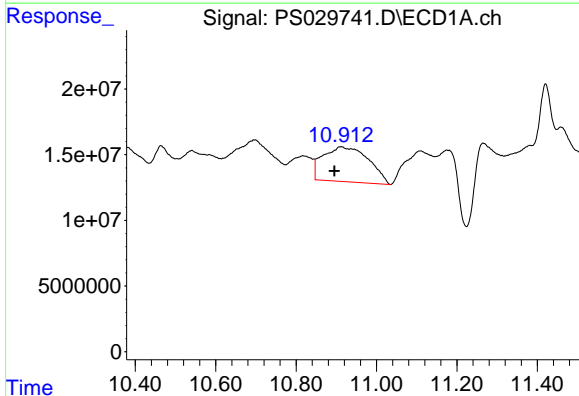
R.T.: 9.739 min
 Delta R.T.: 0.009 min
 Response: 291983918
 Conc: 160.72 ng/ml

Instrument :
 ECD_S
 ClientSampleId :
 OU4-PCS-TC-22-040325



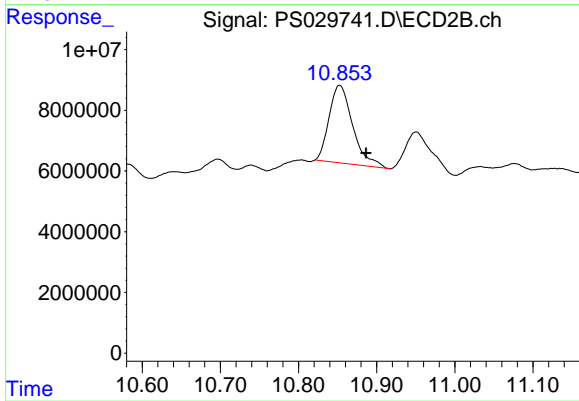
#13 2,4-DB

R.T.: 10.488 min
 Delta R.T.: -0.026 min
 Response: 37789622
 Conc: 50.93 ng/ml



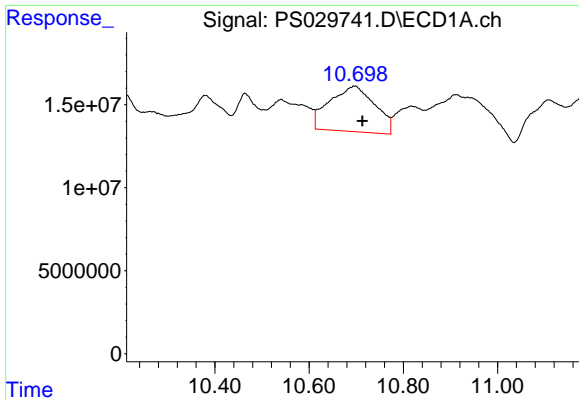
#14 DINOSEB

R.T.: 10.912 min
 Delta R.T.: 0.017 min
 Response: 208498684
 Conc: 24.70 ng/ml



#14 DINOSEB

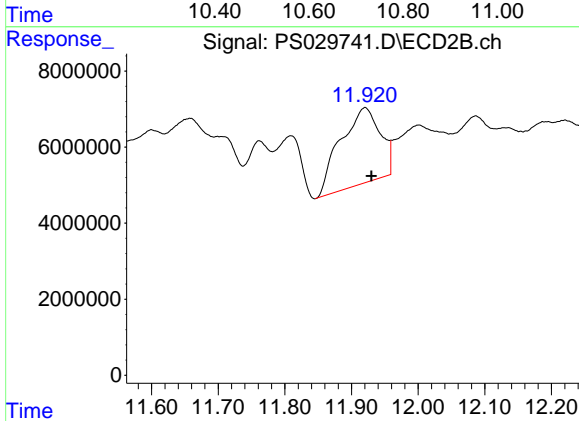
R.T.: 10.853 min
 Delta R.T.: -0.034 min
 Response: 53577167
 Conc: 10.48 ng/ml



#15 Picloram

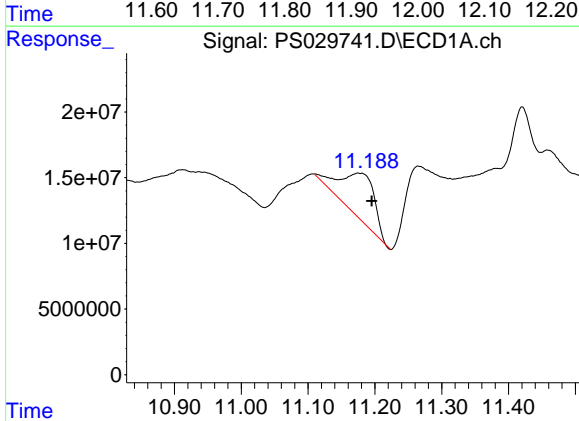
R.T.: 10.697 min
 Delta R.T.: -0.016 min
 Response: 182288340
 Conc: 11.76 ng/ml

Instrument :
 ECD_S
 ClientSampleId :
 OU4-PCS-TC-22-040325



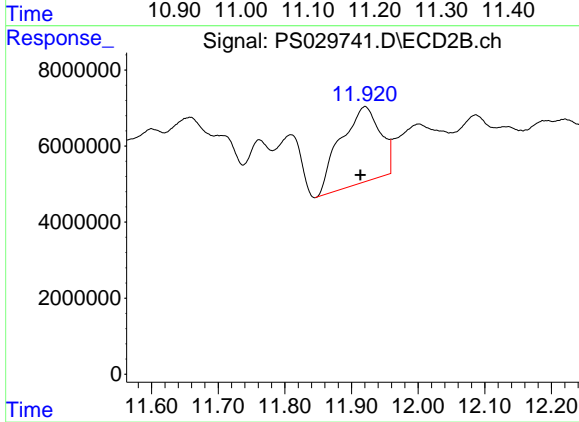
#15 Picloram

R.T.: 11.920 min
 Delta R.T.: -0.009 min
 Response: 82786032
 Conc: 7.00 ng/ml



#16 DCPA

R.T.: 11.176 min
 Delta R.T.: -0.019 min
 Response: 121043237
 Conc: 8.67 ng/ml



#16 DCPA

R.T.: 11.920 min
 Delta R.T.: 0.007 min
 Response: 82786032
 Conc: 9.35 ng/ml