

Data Path : Z:\pestpcbsrv\HPCHEM1\ECD_S\Data\PS040924\
 Data File : PS026397.D
 Signal(s) : Signal #1: ECD1A.ch Signal #2: ECD2B.ch
 Acq On : 09 Apr 2024 17:08
 Operator : AR\AJ
 Sample : P1952-01MS
 Misc :
 ALS Vial : 5 Sample Multiplier: 1

Instrument :
 ECD_S
 ClientSampleId :
 WC-A-COMPMS

Integration File signal 1: autoint1.e
 Integration File signal 2: autoint2.e
 Quant Time: Apr 10 02:23:35 2024
 Quant Method : Z:\pestpcbsrv\HPCHEM1\ECD_S\Method\PS040924.M
 Quant Title : 8080.M
 QLast Update : Tue Apr 09 15:03:09 2024
 Response via : Initial Calibration
 Integrator: ChemStation

Volume Inj. : 2 µl
 Signal #1 Phase : Rtx-CLPesticides Signal #2 Phase: Rtx-CLPesticides2
 Signal #1 Info : 30M x 0.32mm x0.5 Signal #2 Info : 30M x 0.32mm x 0.25µm

	Compound	RT#1	RT#2	Resp#1	Resp#2	ng/ml	ng/ml

System Monitoring Compounds							
4) S	2,4-DCAA	7.105	7.569	1380.4E6	402.0E6	546.970	468.516
Target Compounds							
1) T	Dalapon	2.592	2.613	2137.9E6	815.8E6	462.698	476.690
2) T	3,5-DICHL...	6.292	6.552	1789.0E6	546.0E6	464.326	418.076
3) T	4-Nitroph...	6.899	7.103	630.1E6	209.7E6	522.305	499.472
5) T	DICAMBA	7.287	7.760	5107.2E6	1668.5E6	463.378	429.584
6) T	MCP P	7.467	7.863	314.5E6	132.2E6	39.830	44.322
7) T	MCPA	7.612	8.098	464.6E6	175.2E6	40.996	43.719
8) T	DICHLORPROP	7.982	8.459	1160.5E6	384.1E6	430.093	397.977
9) T	2,4-D	8.208	8.777	1463.2E6	435.2E6	554.933	488.608
10) T	Pentachlo...	8.500	9.287	13156.2E6	4354.9E6	359.688	316.111
11) T	2,4,5-TP ...	9.072	9.664	5863.7E6	1909.3E6	410.805	363.981
12) T	2,4,5-T	9.360	10.073	5961.7E6	1814.3E6	450.330	405.560
13) T	2,4-DB	9.927	10.636	1265.1E6	94489804	731.300	190.165 #
14) T	DINOSEB	11.113	11.006	2268.7E6	782.6E6	244.987	241.526
15) T	Picloram	10.926	12.070	8588.2E6	2011.0E6	550.931	497.495
16) T	DCPA	11.411	12.037	9033.0E6	2782.1E6	509.443	469.348

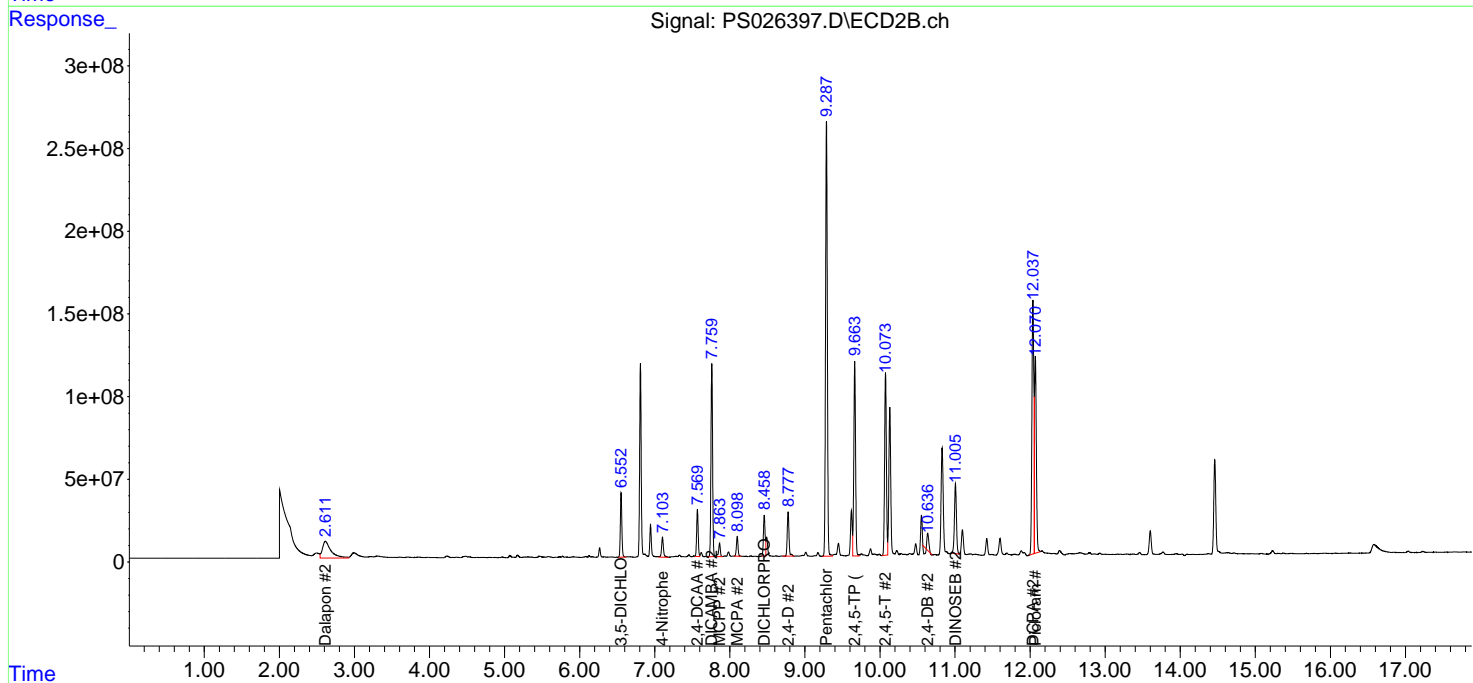
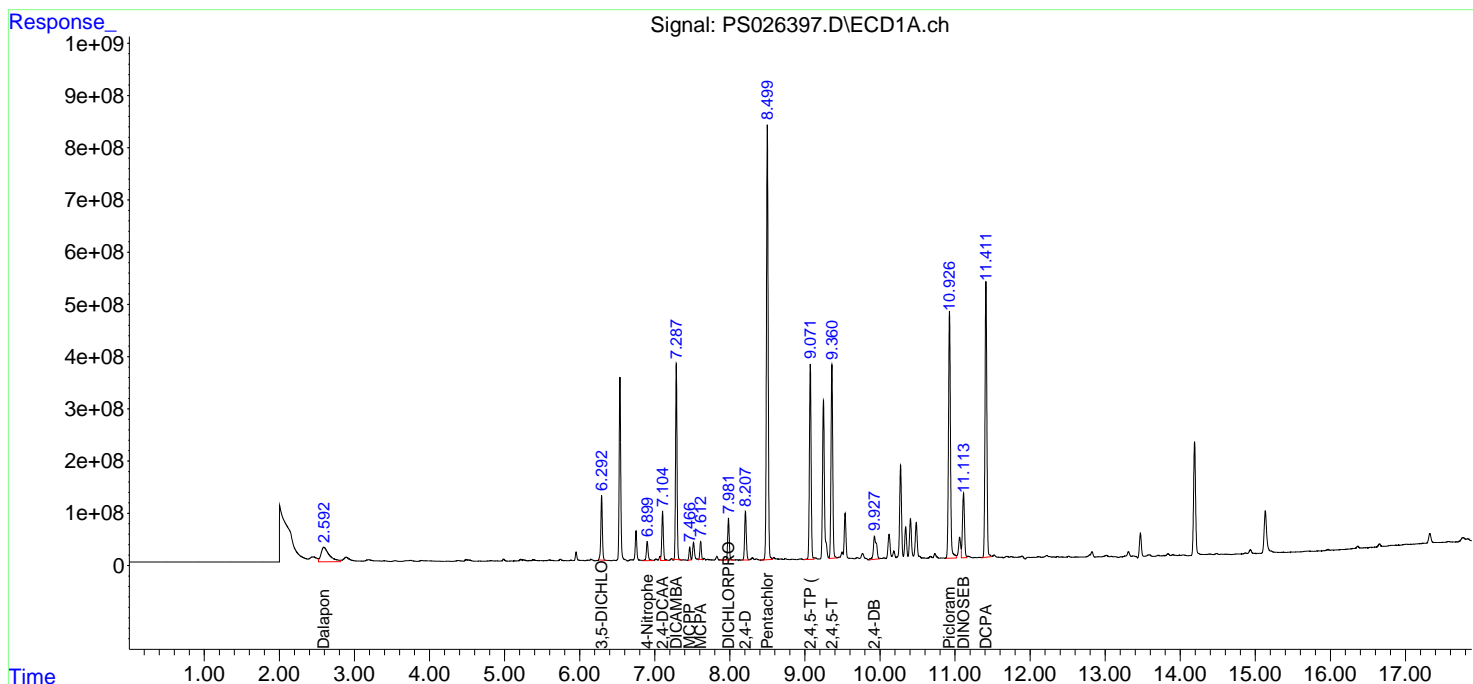
(f)=RT Delta > 1/2 Window (#)=Amounts differ by > 25% (m)=manual int.

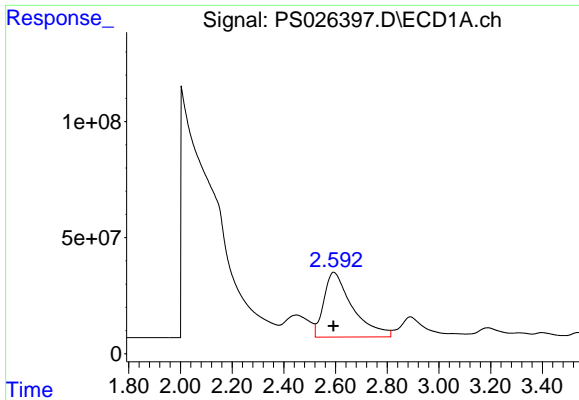
Data Path : Z:\pestpcbsrv\HPCHEM1\ECD_S\Data\PS040924\
 Data File : PS026397.D
 Signal(s) : Signal #1: ECD1A.ch Signal #2: ECD2B.ch
 Acq On : 09 Apr 2024 17:08
 Operator : AR\AJ
 Sample : P1952-01MS
 Misc :
 ALS Vial : 5 Sample Multiplier: 1

Instrument :
 ECD_S
 ClientSampleId :
 WC-A-COMPMS

Integration File signal 1: autoint1.e
 Integration File signal 2: autoint2.e
 Quant Time: Apr 10 02:23:35 2024
 Quant Method : Z:\pestpcbsrv\HPCHEM1\ECD_S\Method\PS040924.M
 Quant Title : 8080.M
 QLast Update : Tue Apr 09 15:03:09 2024
 Response via : Initial Calibration
 Integrator: ChemStation

Volume Inj. : 2 µl
 Signal #1 Phase : Rtx-CLPesticides Signal #2 Phase: Rtx-CLPesticides2
 Signal #1 Info : 30M x 0.32mm x0.5 Signal #2 Info : 30M x 0.32mm x 0.25µm

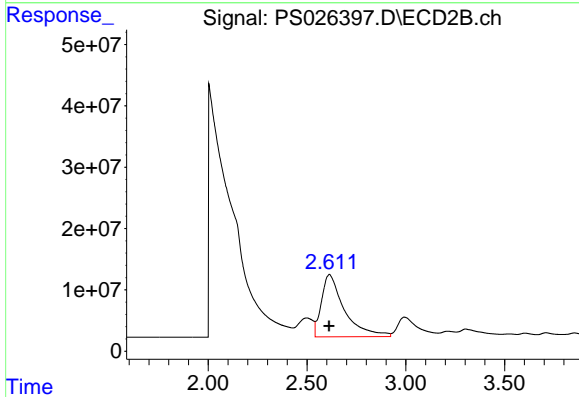




#1 Dalapon

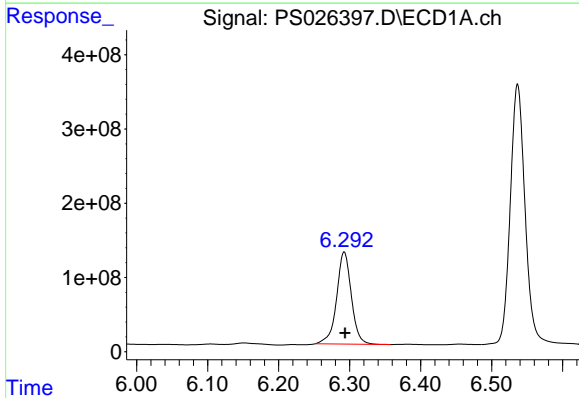
R.T.: 2.592 min
 Delta R.T.: 0.000 min
 Response: 2137852186
 Conc: 462.70 ng/ml

Instrument :
 ECD_S
 ClientSampleId :
 WC-A-COMPMS



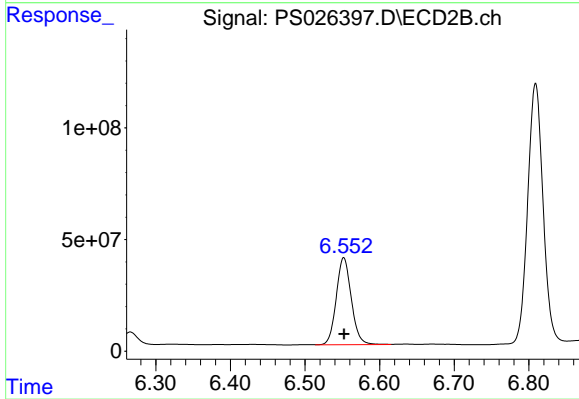
#1 Dalapon

R.T.: 2.613 min
 Delta R.T.: 0.002 min
 Response: 815766931
 Conc: 476.69 ng/ml



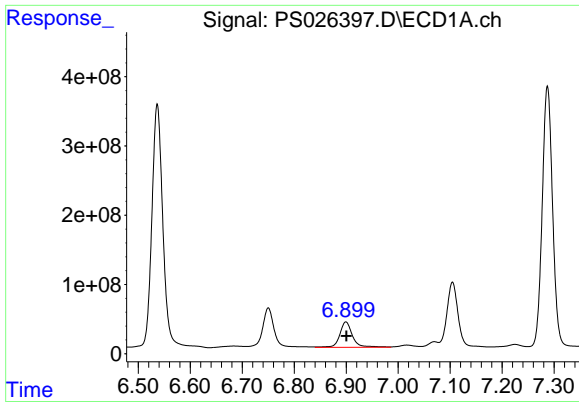
#2 3,5-DICHLOROBENZOIC ACID

R.T.: 6.292 min
 Delta R.T.: -0.001 min
 Response: 1788990632
 Conc: 464.33 ng/ml



#2 3,5-DICHLOROBENZOIC ACID

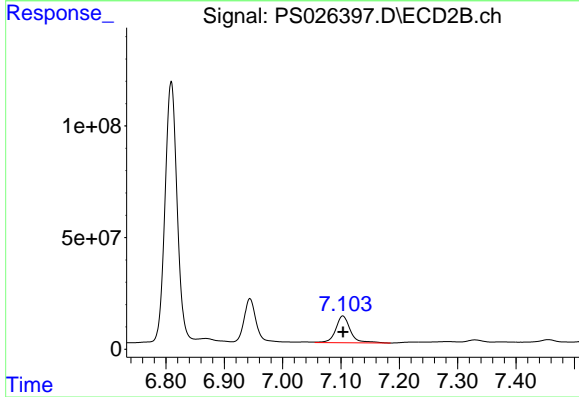
R.T.: 6.552 min
 Delta R.T.: 0.000 min
 Response: 545952532
 Conc: 418.08 ng/ml



#3 4-Nitrophenol

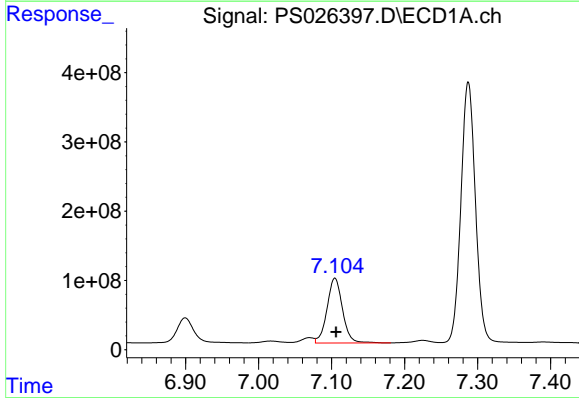
R.T.: 6.899 min
 Delta R.T.: -0.001 min
 Response: 630147566
 Conc: 522.30 ng/ml

Instrument :
 ECD_S
 ClientSampleId :
 WC-A-COMPMS



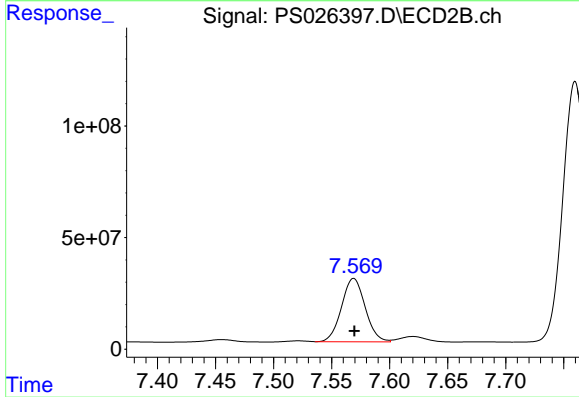
#3 4-Nitrophenol

R.T.: 7.103 min
 Delta R.T.: 0.000 min
 Response: 209680400
 Conc: 499.47 ng/ml



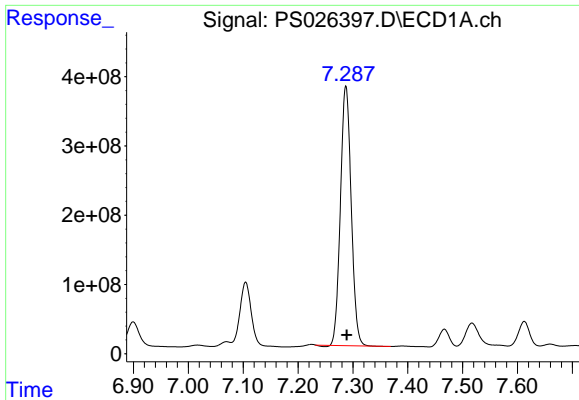
#4 2,4-DCAA

R.T.: 7.105 min
 Delta R.T.: -0.001 min
 Response: 1380429691
 Conc: 546.97 ng/ml



#4 2,4-DCAA

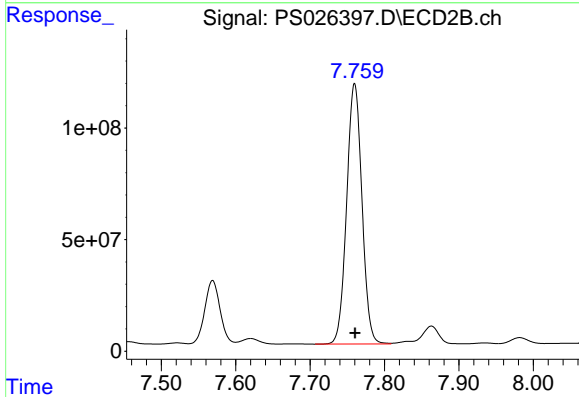
R.T.: 7.569 min
 Delta R.T.: 0.000 min
 Response: 401968379
 Conc: 468.52 ng/ml



#5 DICAMBA

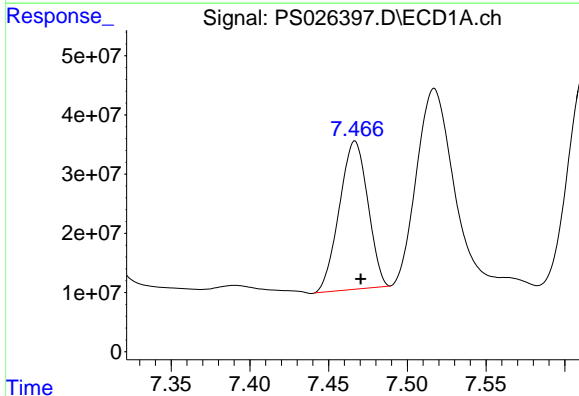
R.T.: 7.287 min
 Delta R.T.: -0.002 min
 Response: 5107221939
 Conc: 463.38 ng/ml

Instrument :
 ECD_S
 ClientSampleId :
 WC-A-COMPMS



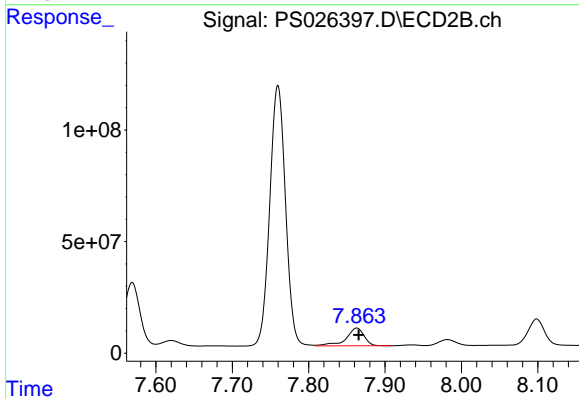
#5 DICAMBA

R.T.: 7.760 min
 Delta R.T.: 0.000 min
 Response: 1668525638
 Conc: 429.58 ng/ml



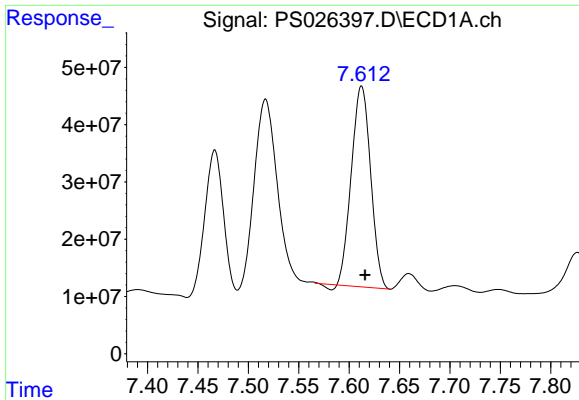
#6 MCP

R.T.: 7.467 min
 Delta R.T.: -0.004 min
 Response: 314545818
 Conc: 39.83 ug/ml



#6 MCP

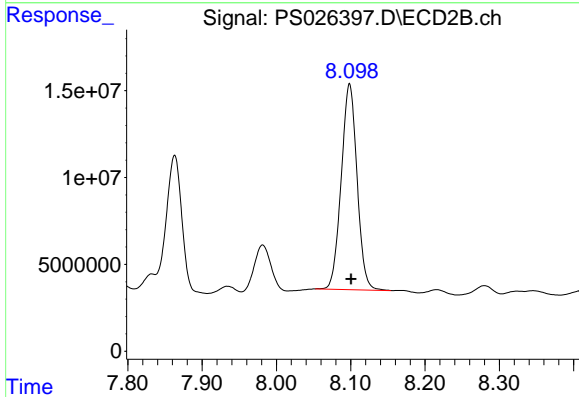
R.T.: 7.863 min
 Delta R.T.: -0.003 min
 Response: 132196878
 Conc: 44.32 ug/ml



#7 MCPA

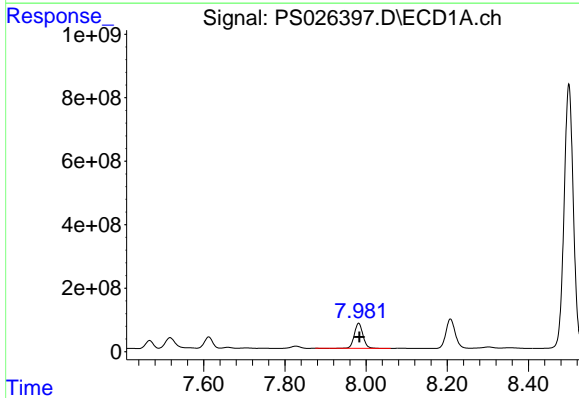
R.T.: 7.612 min
 Delta R.T.: -0.004 min
 Response: 464633382
 Conc: 41.00 ug/ml

Instrument :
 ECD_S
 ClientSampleId :
 WC-A-COMPMS



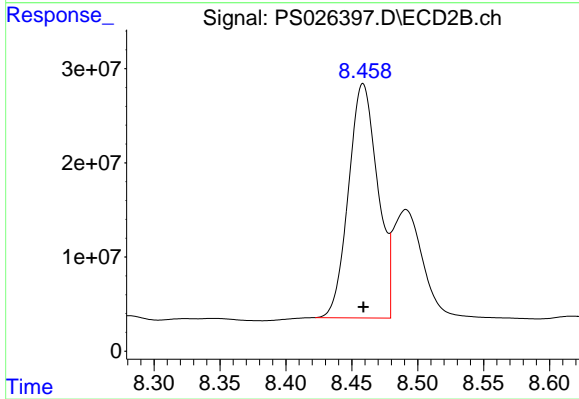
#7 MCPA

R.T.: 8.098 min
 Delta R.T.: -0.002 min
 Response: 175151691
 Conc: 43.72 ug/ml



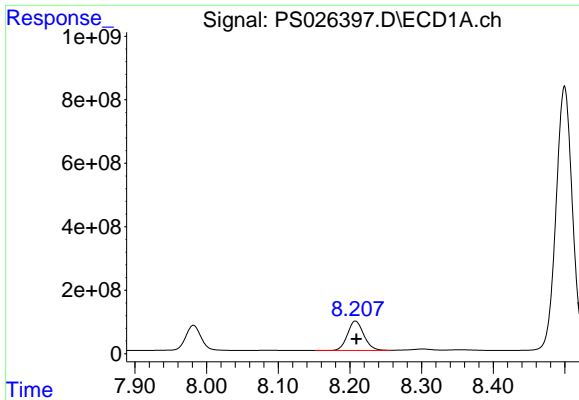
#8 DICHLORPROP

R.T.: 7.982 min
 Delta R.T.: -0.002 min
 Response: 1160523208
 Conc: 430.09 ng/ml



#8 DICHLORPROP

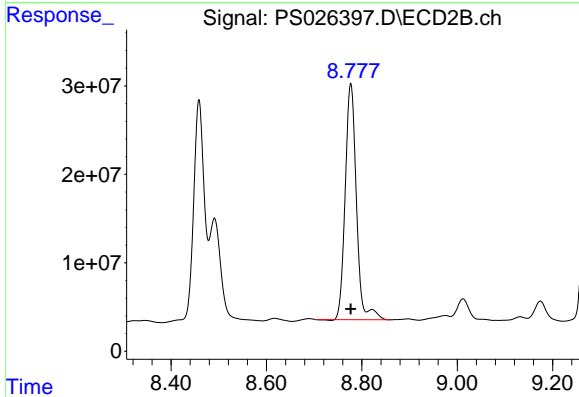
R.T.: 8.459 min
 Delta R.T.: 0.000 min
 Response: 384116199
 Conc: 397.98 ng/ml



#9 2,4-D

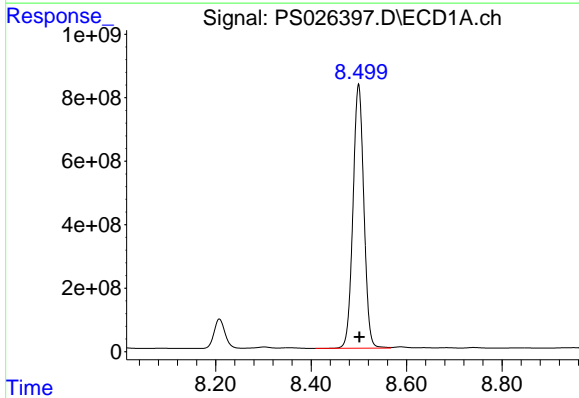
R.T.: 8.208 min
 Delta R.T.: -0.002 min
 Response: 1463234876
 Conc: 554.93 ng/ml

Instrument :
 ECD_S
 ClientSampleId :
 WC-A-COMPMS



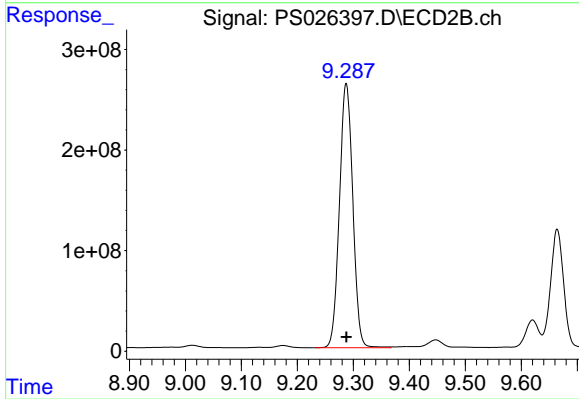
#9 2,4-D

R.T.: 8.777 min
 Delta R.T.: 0.000 min
 Response: 435225111
 Conc: 488.61 ng/ml



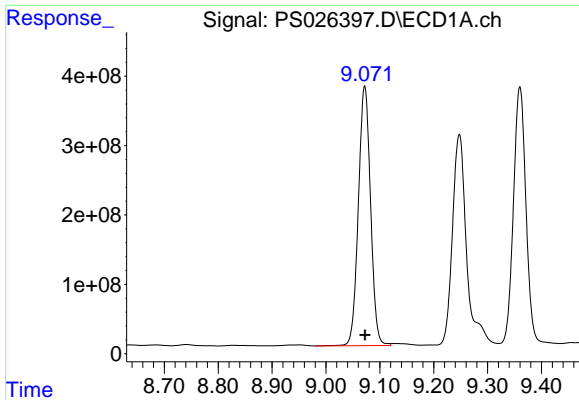
#10 Pentachlorophenol

R.T.: 8.500 min
 Delta R.T.: -0.002 min
 Response: 13156151019
 Conc: 359.69 ng/ml



#10 Pentachlorophenol

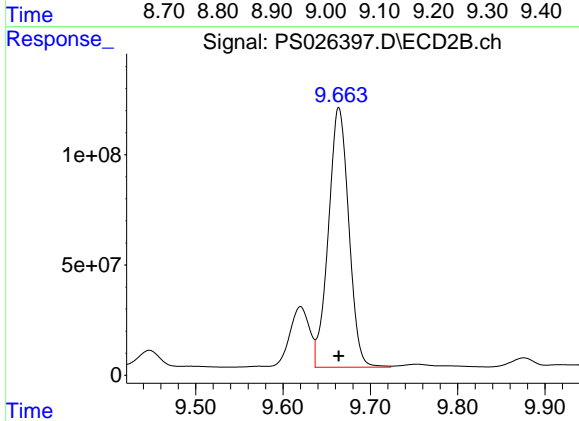
R.T.: 9.287 min
 Delta R.T.: 0.000 min
 Response: 4354929934
 Conc: 316.11 ng/ml



#11 2,4,5-TP (SILVEX)

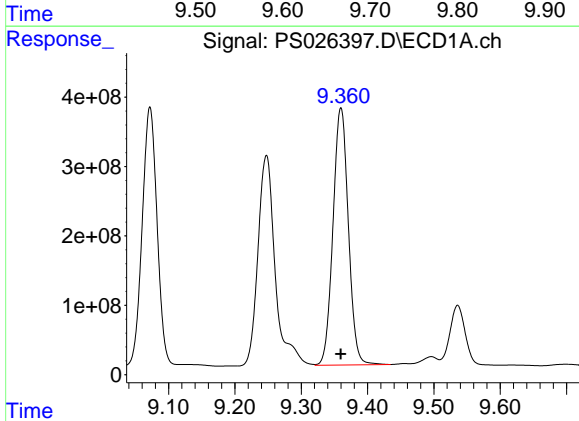
R.T.: 9.072 min
Delta R.T.: 0.000 min
Response: 5863665608
Conc: 410.80 ng/ml

Instrument :
ECD_S
ClientSampleId :
WC-A-COMPMS



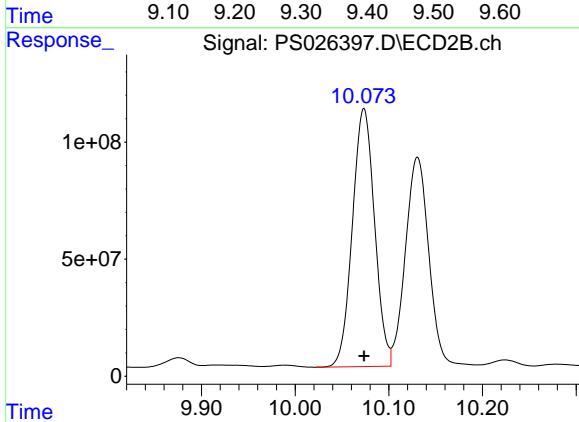
#11 2,4,5-TP (SILVEX)

R.T.: 9.664 min
Delta R.T.: 0.000 min
Response: 1909337094
Conc: 363.98 ng/ml



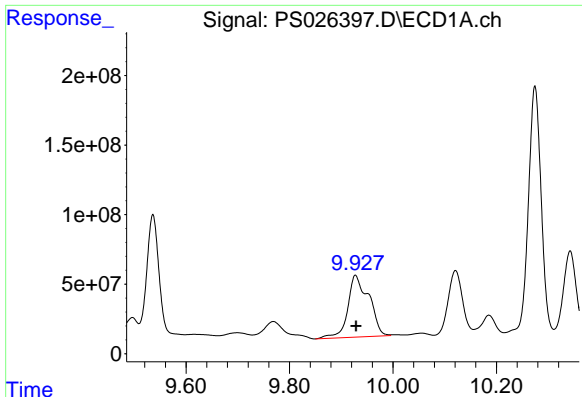
#12 2,4,5-T

R.T.: 9.360 min
Delta R.T.: 0.000 min
Response: 5961674711
Conc: 450.33 ng/ml



#12 2,4,5-T

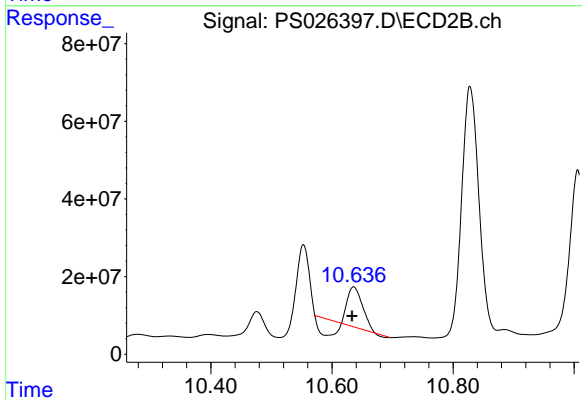
R.T.: 10.073 min
Delta R.T.: 0.000 min
Response: 1814346621
Conc: 405.56 ng/ml



#13 2,4-DB

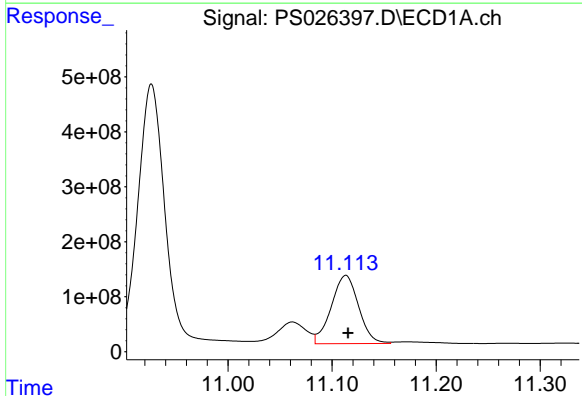
R.T.: 9.927 min
Delta R.T.: -0.001 min
Response: 1265066937
Conc: 731.30 ng/ml

Instrument :
ECD_S
ClientSampleId :
WC-A-COMPMS



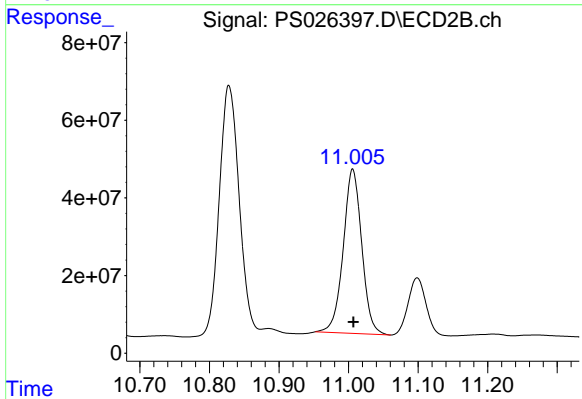
#13 2,4-DB

R.T.: 10.636 min
Delta R.T.: 0.002 min
Response: 94489804
Conc: 190.17 ng/ml



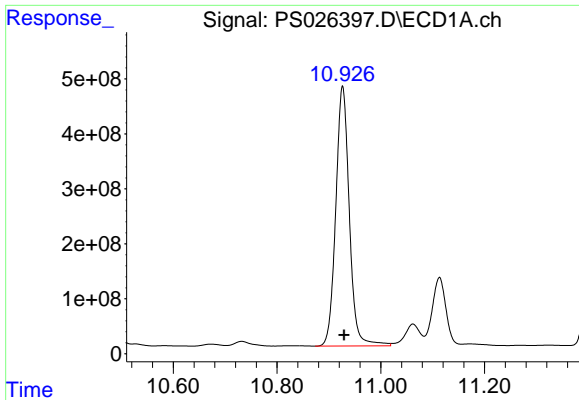
#14 DINOSEB

R.T.: 11.113 min
Delta R.T.: -0.002 min
Response: 2268700077
Conc: 244.99 ng/ml



#14 DINOSEB

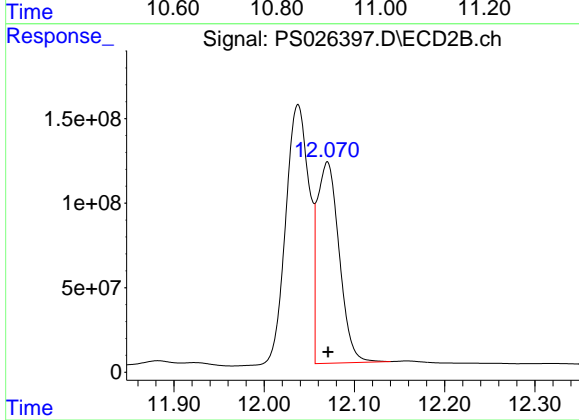
R.T.: 11.006 min
Delta R.T.: -0.001 min
Response: 782626678
Conc: 241.53 ng/ml



#15 Picloram

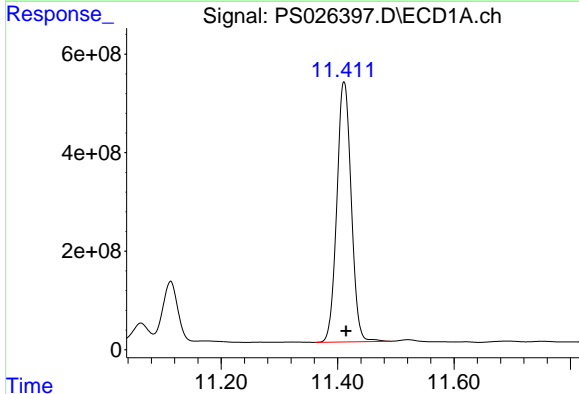
R.T.: 10.926 min
 Delta R.T.: -0.003 min
 Response: 8588181596
 Conc: 550.93 ng/ml

Instrument :
 ECD_S
 ClientSampleId :
 WC-A-COMPMS



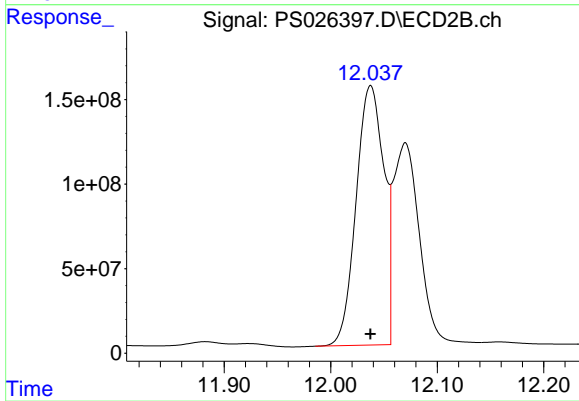
#15 Picloram

R.T.: 12.070 min
 Delta R.T.: -0.001 min
 Response: 2010953397
 Conc: 497.49 ng/ml



#16 DCPA

R.T.: 11.411 min
 Delta R.T.: -0.003 min
 Response: 9032984151
 Conc: 509.44 ng/ml



#16 DCPA

R.T.: 12.037 min
 Delta R.T.: 0.000 min
 Response: 2782054121
 Conc: 469.35 ng/ml