

Data Path : Z:\pestpcbsrv\HPCHEM1\ECD\_S\Data\PS040924\  
 Data File : PS026398.D  
 Signal(s) : Signal #1: ECD1A.ch Signal #2: ECD2B.ch  
 Acq On : 09 Apr 2024 17:32  
 Operator : AR\AJ  
 Sample : P1952-01MSD  
 Misc :  
 ALS Vial : 6 Sample Multiplier: 1

Instrument :  
 ECD\_S  
 ClientSampleId :  
 WC-A-COMPMSD

Integration File signal 1: autoint1.e  
 Integration File signal 2: autoint2.e  
 Quant Time: Apr 10 02:23:59 2024  
 Quant Method : Z:\pestpcbsrv\HPCHEM1\ECD\_S\Method\PS040924.M  
 Quant Title : 8080.M  
 QLast Update : Tue Apr 09 15:03:09 2024  
 Response via : Initial Calibration  
 Integrator: ChemStation

Volume Inj. : 2 µl  
 Signal #1 Phase : Rtx-CLPesticides Signal #2 Phase: Rtx-CLPesticides2  
 Signal #1 Info : 30M x 0.32mm x0.5 Signal #2 Info : 30M x 0.32mm x 0.25µm

	Compound	RT#1	RT#2	Resp#1	Resp#2	ng/ml	ng/ml
-----							
System Monitoring Compounds							
4) S	2,4-DCAA	7.104	7.569	1388.0E6	404.0E6	549.987	470.837
Target Compounds							
1) T	Dalapon	2.593	2.610	2134.2E6	802.3E6	461.911	468.810
2) T	3,5-DICHL...	6.292	6.552	1810.4E6	540.9E6	469.896	414.221
3) T	4-Nitroph...	6.899	7.103	635.0E6	208.0E6	526.314	495.577
5) T	DICAMBA	7.286	7.759	5110.6E6	1679.6E6	463.684	432.443
6) T	MCP P	7.466	7.863	315.8E6	119.3E6	39.983	39.988
7) T	MCPA	7.612	8.098	480.6E6	175.7E6	42.404	43.845
8) T	DICHLORPROP	7.982	8.458	1163.8E6	386.0E6	431.305	399.971
9) T	2,4-D	8.207	8.776	1484.0E6	427.0E6	562.795	479.351
10) T	Pentachlo...	8.499	9.287	13191.6E6	4404.5E6	360.658	319.707
11) T	2,4,5-TP ...	9.071	9.664	5859.8E6	1936.7E6	410.532	369.205
12) T	2,4,5-T	9.359	10.073	5972.4E6	1832.7E6	451.138	409.654
13) T	2,4-DB	9.927	10.636	1268.8E6	125.0E6	733.456	251.561 #
14) T	DINOSEB	11.113	11.006	2278.5E6	797.7E6	246.048	246.167
15) T	Picloram	10.925	12.070	8537.6E6	2044.5E6	547.687	505.799
16) T	DCPA	11.411	12.038	9015.3E6	2817.9E6	508.444	475.395
-----							

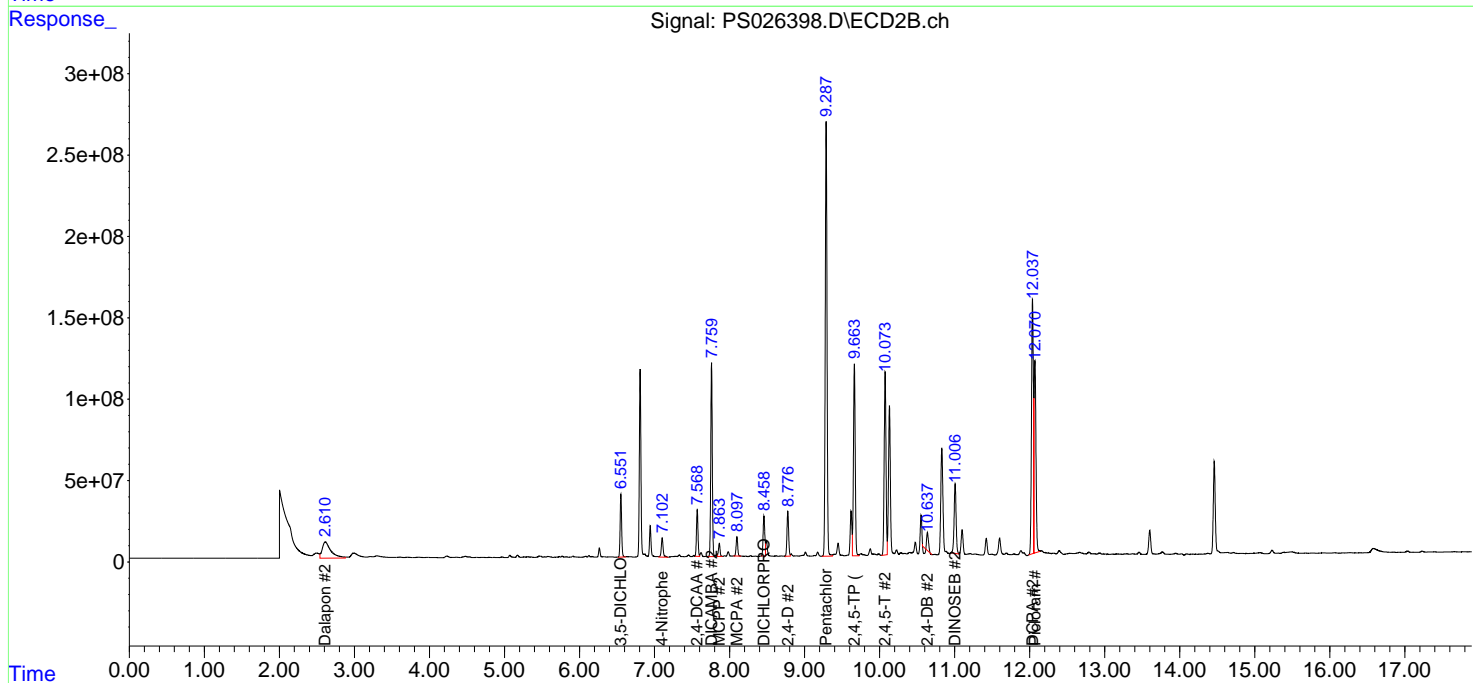
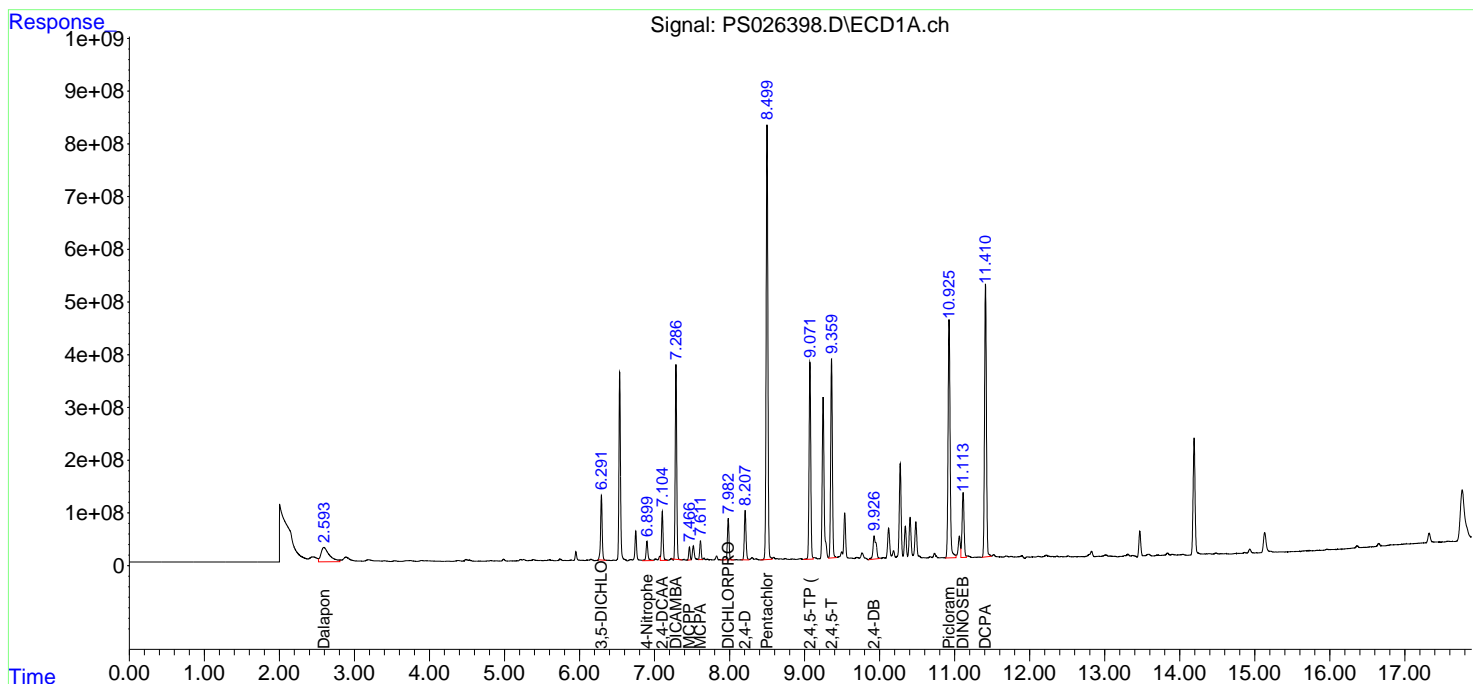
(f)=RT Delta > 1/2 Window (#)=Amounts differ by > 25% (m)=manual int.

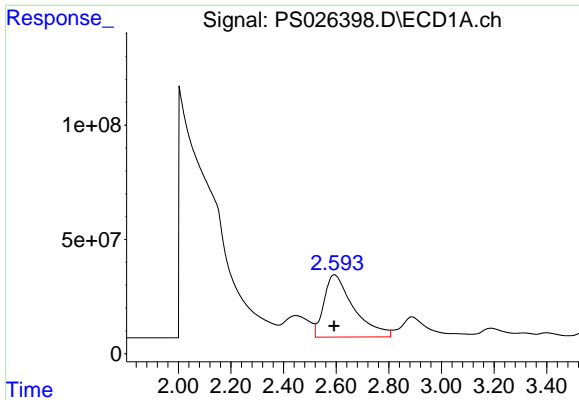
Data Path : Z:\pestpcbsrv\HPCHEM1\ECD\_S\Data\PS040924\  
 Data File : PS026398.D  
 Signal(s) : Signal #1: ECD1A.ch Signal #2: ECD2B.ch  
 Acq On : 09 Apr 2024 17:32  
 Operator : AR\AJ  
 Sample : P1952-01MSD  
 Misc :  
 ALS Vial : 6 Sample Multiplier: 1

Instrument :  
 ECD\_S  
 ClientSampleId :  
 WC-A-COMPMSD

Integration File signal 1: autoint1.e  
 Integration File signal 2: autoint2.e  
 Quant Time: Apr 10 02:23:59 2024  
 Quant Method : Z:\pestpcbsrv\HPCHEM1\ECD\_S\Method\PS040924.M  
 Quant Title : 8080.M  
 QLast Update : Tue Apr 09 15:03:09 2024  
 Response via : Initial Calibration  
 Integrator: ChemStation

Volume Inj. : 2 µl  
 Signal #1 Phase : Rtx-CLPesticides Signal #2 Phase: Rtx-CLPesticides2  
 Signal #1 Info : 30M x 0.32mm x0.5 Signal #2 Info : 30M x 0.32mm x 0.25µm

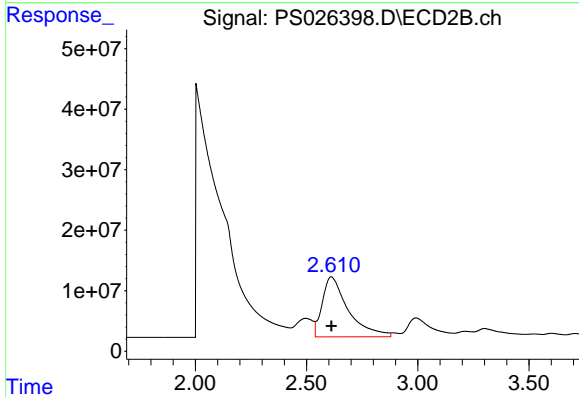




#1 Dalapon

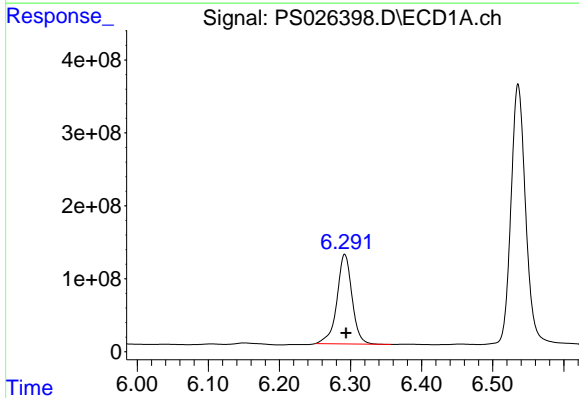
R.T.: 2.593 min  
 Delta R.T.: 0.001 min  
 Response: 2134216051  
 Conc: 461.91 ng/ml

Instrument :  
 ECD\_S  
 ClientSampleId :  
 WC-A-COMPMSD



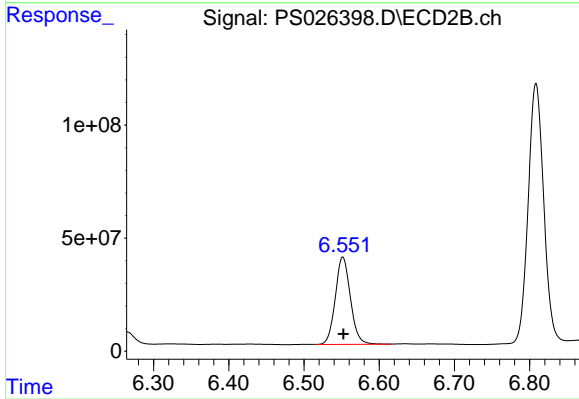
#1 Dalapon

R.T.: 2.610 min  
 Delta R.T.: -0.001 min  
 Response: 802281442  
 Conc: 468.81 ng/ml



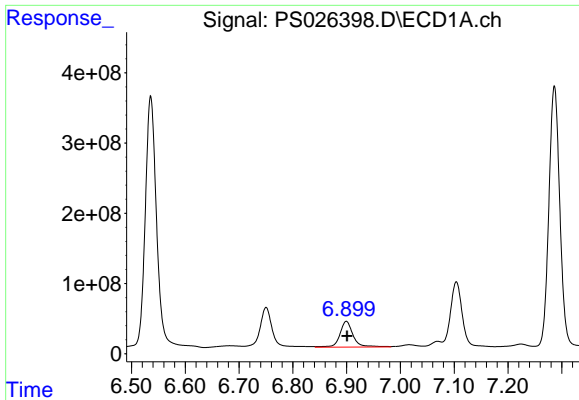
#2 3,5-DICHLOROBENZOIC ACID

R.T.: 6.292 min  
 Delta R.T.: -0.002 min  
 Response: 1810448585  
 Conc: 469.90 ng/ml



#2 3,5-DICHLOROBENZOIC ACID

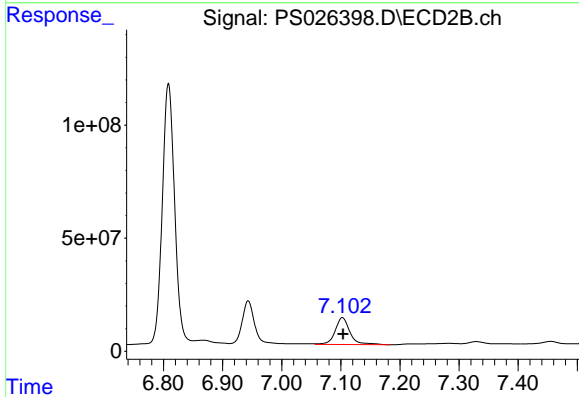
R.T.: 6.552 min  
 Delta R.T.: 0.000 min  
 Response: 540918636  
 Conc: 414.22 ng/ml



#3 4-Nitrophenol

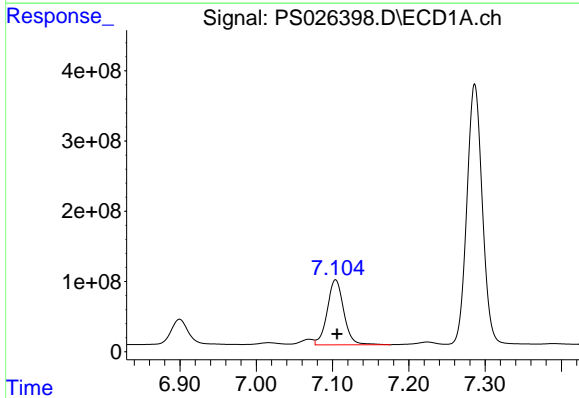
R.T.: 6.899 min  
 Delta R.T.: -0.001 min  
 Response: 634984860  
 Conc: 526.31 ng/ml

Instrument :  
 ECD\_S  
 ClientSampleId :  
 WC-A-COMPMSD



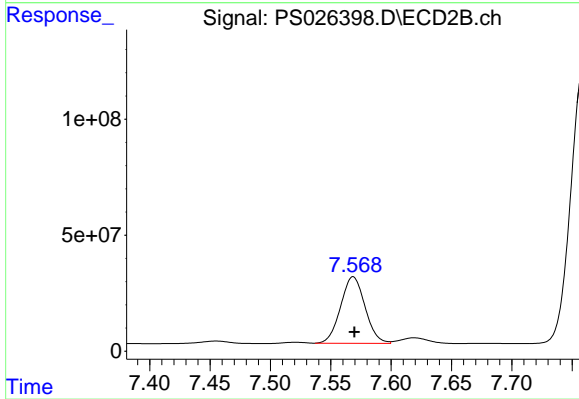
#3 4-Nitrophenol

R.T.: 7.103 min  
 Delta R.T.: -0.001 min  
 Response: 208044931  
 Conc: 495.58 ng/ml



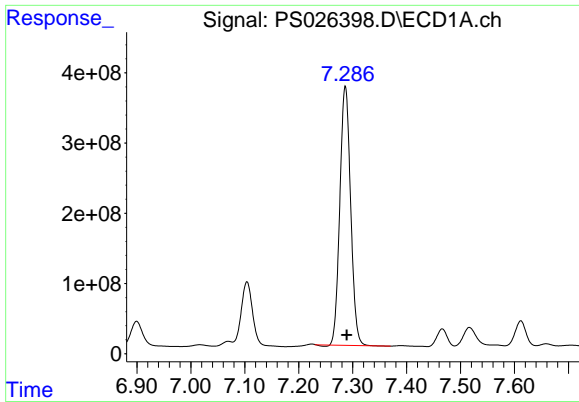
#4 2,4-DCAA

R.T.: 7.104 min  
 Delta R.T.: -0.002 min  
 Response: 1388045422  
 Conc: 549.99 ng/ml



#4 2,4-DCAA

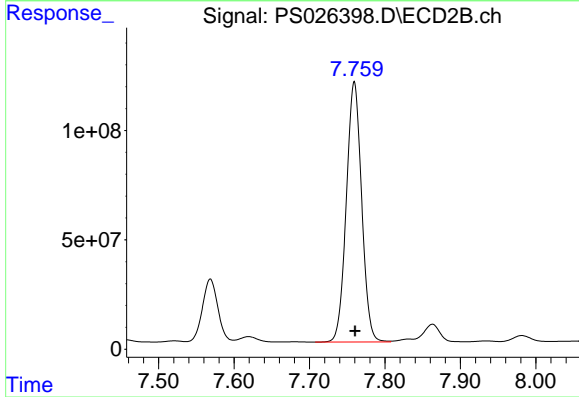
R.T.: 7.569 min  
 Delta R.T.: -0.001 min  
 Response: 403959618  
 Conc: 470.84 ng/ml



#5 DICAMBA

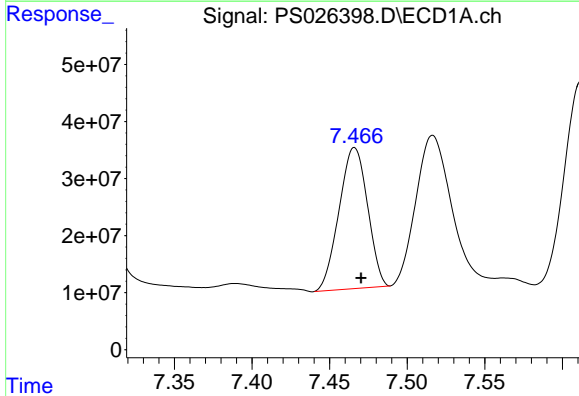
R.T.: 7.286 min  
 Delta R.T.: -0.002 min  
 Response: 5110594534  
 Conc: 463.68 ng/ml

Instrument :  
 ECD\_S  
 ClientSampleId :  
 WC-A-COMPMSD



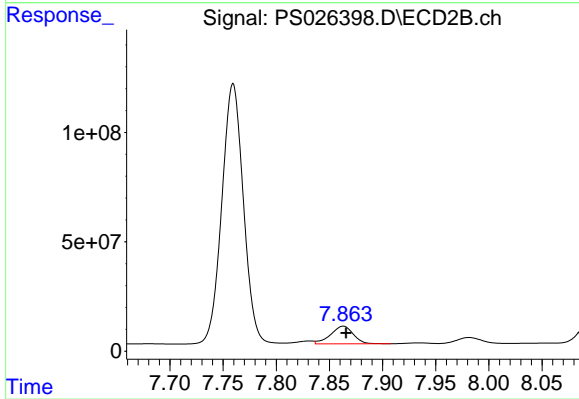
#5 DICAMBA

R.T.: 7.759 min  
 Delta R.T.: 0.000 min  
 Response: 1679631015  
 Conc: 432.44 ng/ml



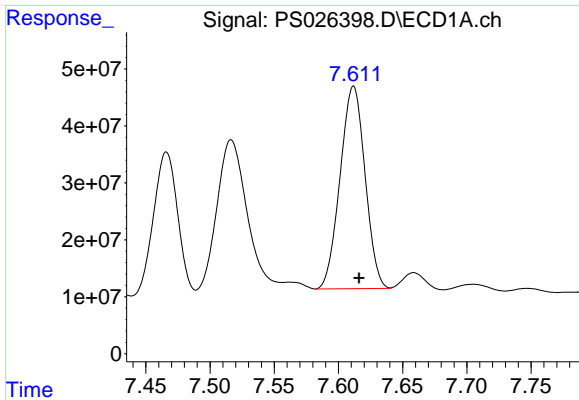
#6 MCPP

R.T.: 7.466 min  
 Delta R.T.: -0.004 min  
 Response: 315758325  
 Conc: 39.98 ug/ml



#6 MCPP

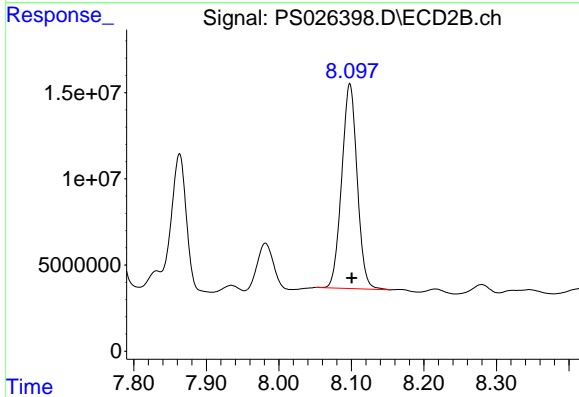
R.T.: 7.863 min  
 Delta R.T.: -0.003 min  
 Response: 119268413  
 Conc: 39.99 ug/ml



#7 MCPA

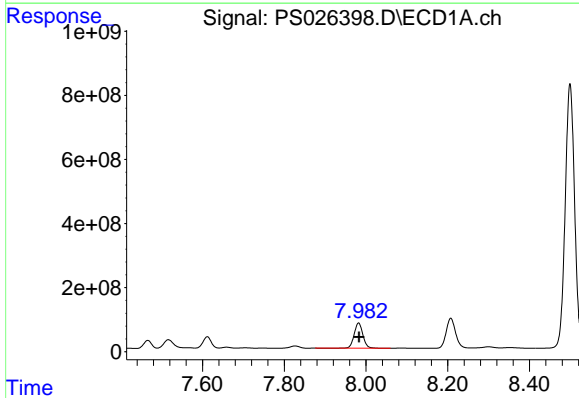
R.T.: 7.612 min  
 Delta R.T.: -0.004 min  
 Response: 480599581  
 Conc: 42.40 ug/ml

Instrument :  
 ECD\_S  
 ClientSampleId :  
 WC-A-COMPMSD



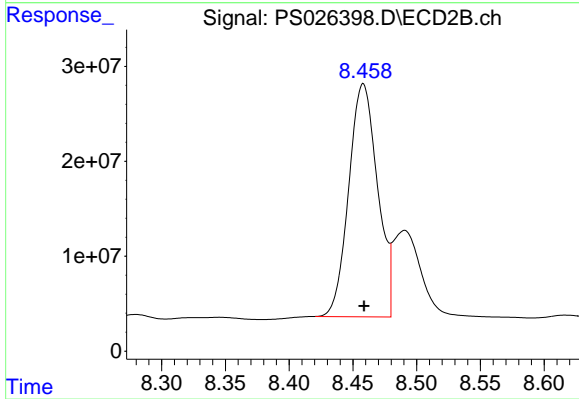
#7 MCPA

R.T.: 8.098 min  
 Delta R.T.: -0.003 min  
 Response: 175659571  
 Conc: 43.85 ug/ml



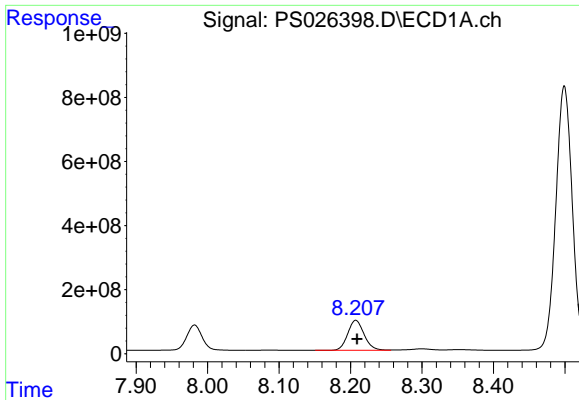
#8 DICHLORPROP

R.T.: 7.982 min  
 Delta R.T.: -0.001 min  
 Response: 1163793123  
 Conc: 431.30 ng/ml



#8 DICHLORPROP

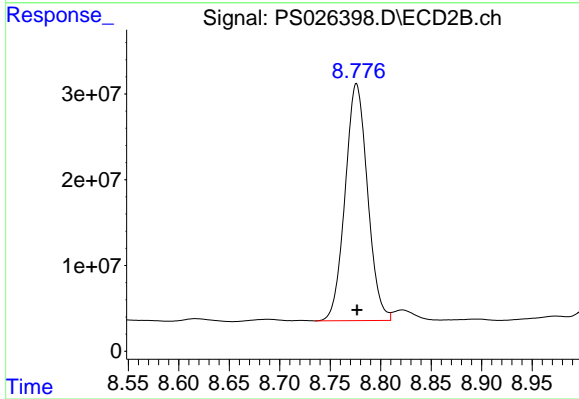
R.T.: 8.458 min  
 Delta R.T.: 0.000 min  
 Response: 386040114  
 Conc: 399.97 ng/ml



#9 2,4-D

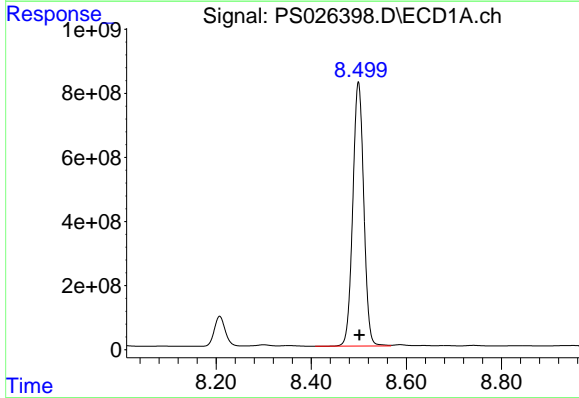
R.T.: 8.207 min  
 Delta R.T.: -0.002 min  
 Response: 1483965044  
 Conc: 562.79 ng/ml

Instrument :  
 ECD\_S  
 ClientSampleId :  
 WC-A-COMPMSD



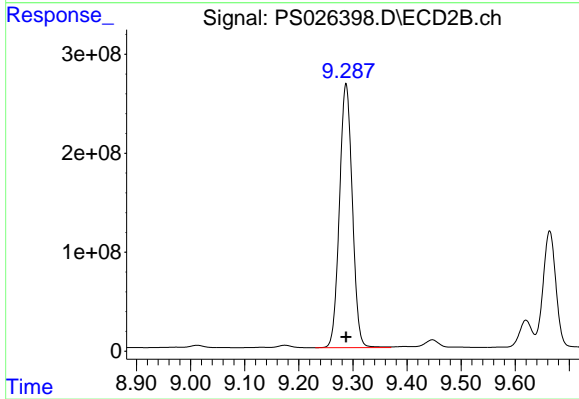
#9 2,4-D

R.T.: 8.776 min  
 Delta R.T.: 0.000 min  
 Response: 426979403  
 Conc: 479.35 ng/ml



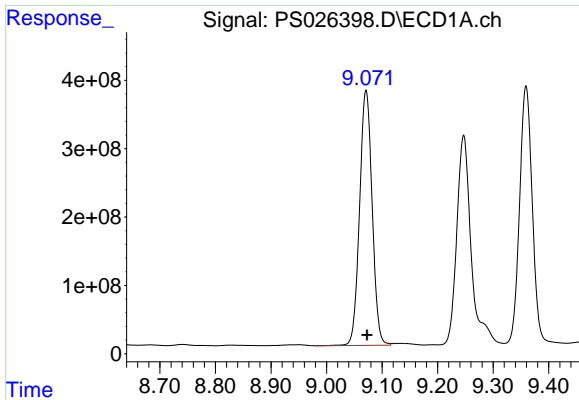
#10 Pentachlorophenol

R.T.: 8.499 min  
 Delta R.T.: -0.002 min  
 Response: 13191642873  
 Conc: 360.66 ng/ml



#10 Pentachlorophenol

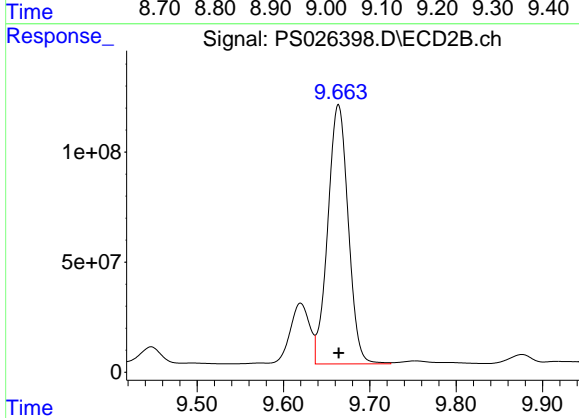
R.T.: 9.287 min  
 Delta R.T.: 0.000 min  
 Response: 4404464660  
 Conc: 319.71 ng/ml



#11 2,4,5-TP (SILVEX)

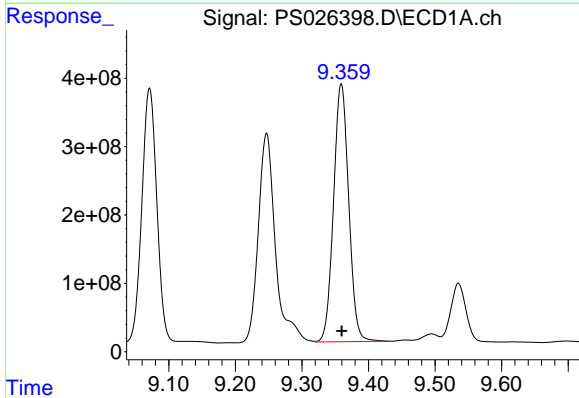
R.T.: 9.071 min  
Delta R.T.: -0.002 min  
Response: 5859777695  
Conc: 410.53 ng/ml

Instrument :  
ECD\_S  
ClientSampleId :  
WC-A-COMPMSD



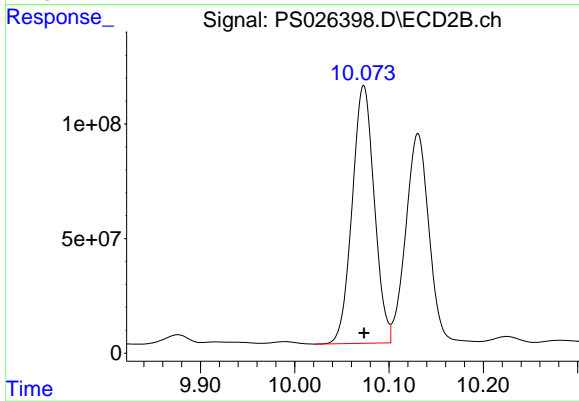
#11 2,4,5-TP (SILVEX)

R.T.: 9.664 min  
Delta R.T.: 0.000 min  
Response: 1936740917  
Conc: 369.20 ng/ml



#12 2,4,5-T

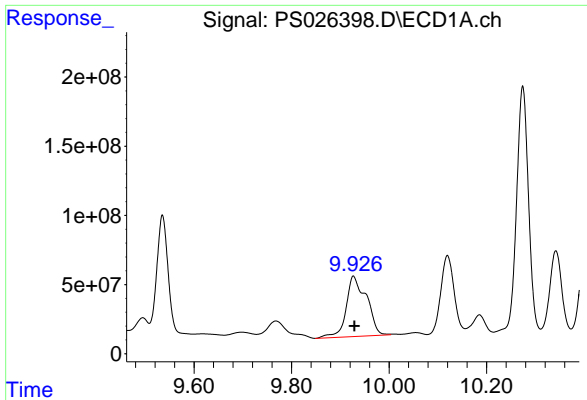
R.T.: 9.359 min  
Delta R.T.: 0.000 min  
Response: 5972372627  
Conc: 451.14 ng/ml



#12 2,4,5-T

R.T.: 10.073 min  
Delta R.T.: 0.000 min  
Response: 1832662347  
Conc: 409.65 ng/ml

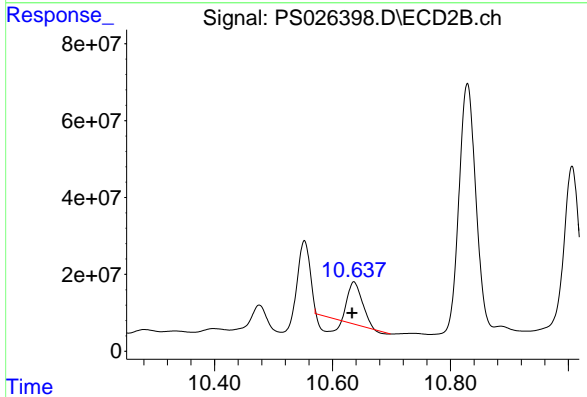




#13 2,4-DB

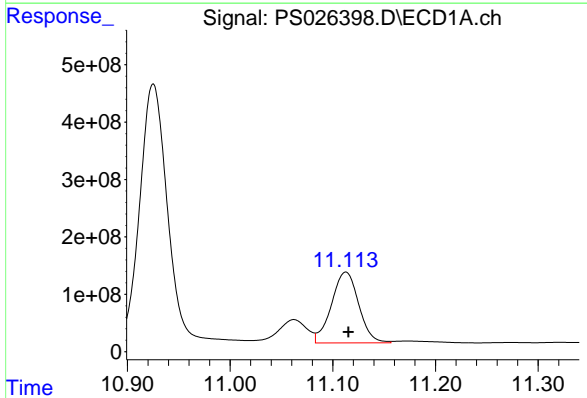
R.T.: 9.927 min  
 Delta R.T.: -0.002 min  
 Response: 1268797070  
 Conc: 733.46 ng/ml

Instrument :  
 ECD\_S  
 ClientSampleId :  
 WC-A-COMPMSD



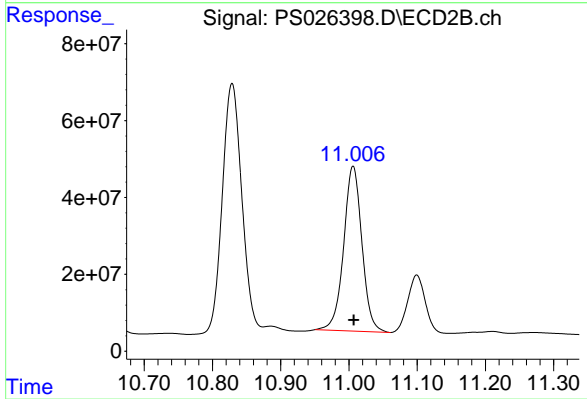
#13 2,4-DB

R.T.: 10.636 min  
 Delta R.T.: 0.003 min  
 Response: 124996404  
 Conc: 251.56 ng/ml



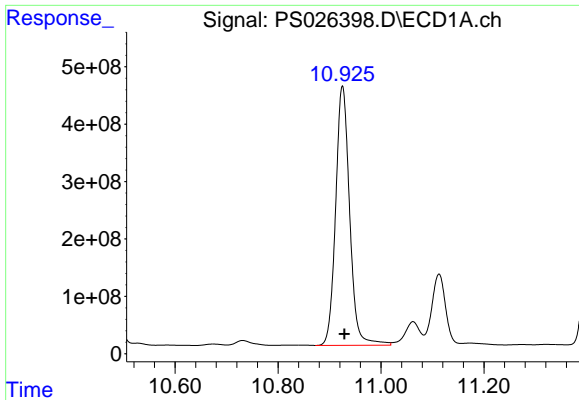
#14 DINOSEB

R.T.: 11.113 min  
 Delta R.T.: -0.003 min  
 Response: 2278517939  
 Conc: 246.05 ng/ml



#14 DINOSEB

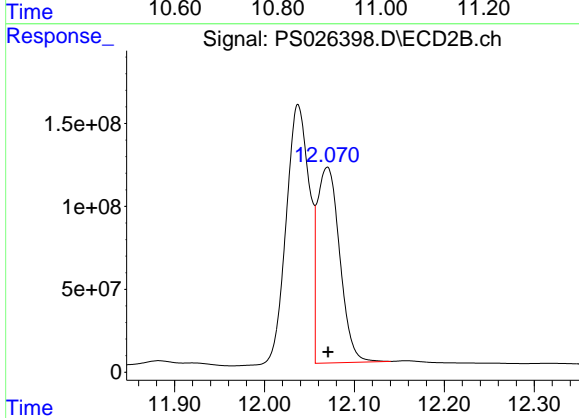
R.T.: 11.006 min  
 Delta R.T.: 0.000 min  
 Response: 797665584  
 Conc: 246.17 ng/ml



#15 Picloram

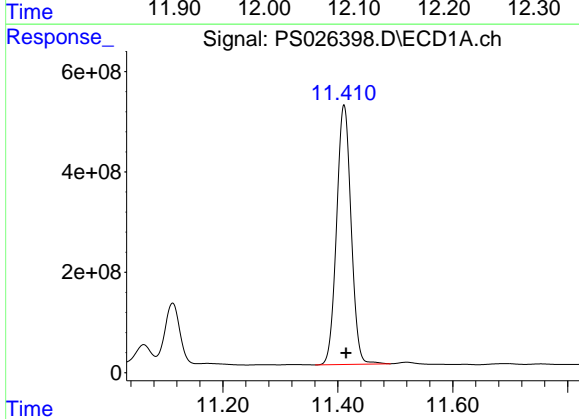
R.T.: 10.925 min  
 Delta R.T.: -0.004 min  
 Response: 8537599347  
 Conc: 547.69 ng/ml

Instrument :  
 ECD\_S  
 ClientSampleId :  
 WC-A-COMPMSD



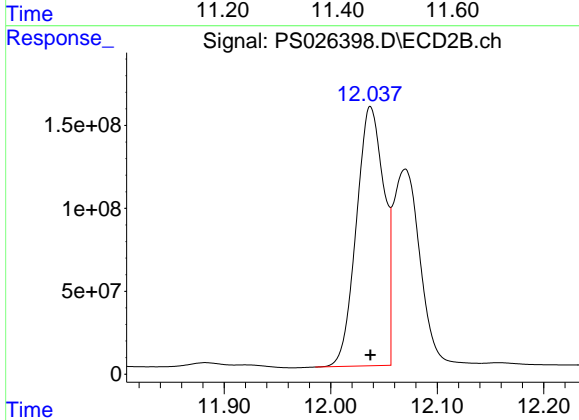
#15 Picloram

R.T.: 12.070 min  
 Delta R.T.: -0.001 min  
 Response: 2044522116  
 Conc: 505.80 ng/ml



#16 DCPA

R.T.: 11.411 min  
 Delta R.T.: -0.004 min  
 Response: 9015260688  
 Conc: 508.44 ng/ml



#16 DCPA

R.T.: 12.038 min  
 Delta R.T.: 0.000 min  
 Response: 2817896306  
 Conc: 475.39 ng/ml