

Data Path : Z:\pestpcbsrv\HPCHEM1\ECD\_S\Data\PS041125\  
 Data File : PS029810.D  
 Signal(s) : Signal #1: ECD1A.ch Signal #2: ECD2B.ch  
 Acq On : 11 Apr 2025 15:07  
 Operator : AR\AJ  
 Sample : HSTDCCC750  
 Misc :  
 ALS Vial : 3 Sample Multiplier: 1

**Instrument :**  
 ECD\_S  
**ClientSampleId :**  
 HSTDCCC750

**Manual Integrations**  
**APPROVED**  
 Reviewed By :Abdul Mirza 04/14/2025  
 Supervised By :mohammad ahmed 04/15/2025

Integration File signal 1: autoint1.e  
 Integration File signal 2: autoint2.e  
 Quant Time: Apr 12 00:03:13 2025  
 Quant Method : Z:\pestpcbsrv\HPCHEM1\ECD\_S\Method\PS040225.M  
 Quant Title : 8080.M  
 QLast Update : Wed Apr 02 23:52:55 2025  
 Response via : Initial Calibration  
 Integrator: ChemStation

Volume Inj. : 1 µl  
 Signal #1 Phase : ZB-MR1 Signal #2 Phase: ZB-MR2  
 Signal #1 Info : 30M x 0.32mm x0.5 Signal #2 Info : 30M x 0.32mm x 0.25µm

	Compound	RT#1	RT#2	Resp#1	Resp#2	ng/ml	ng/ml
-----							
System Monitoring Compounds							
4) S	2,4-DCAA	6.955	7.496	1573.8E6	517.6E6	771.897	759.556
Target Compounds							
1) T	Dalapon	2.454	2.530	2191.2E6	980.3E6	645.925	617.487
2) T	3,5-DICHL...	6.158	6.487	2225.2E6	669.3E6	739.818	693.201
3) T	4-Nitroph...	6.746	7.028	1074.7E6	469.1E6	765.039	661.674
5) T	DICAMBA	7.133	7.683	6228.5E6	2702.1E6	748.440	731.614
6) T	MCP P	7.311	7.791	395.0E6	112.3E6	72.888	66.503
7) T	MCPA	7.453	8.021	536.8E6	153.9E6	73.844m	67.633m
8) T	DICHLORPROP	7.814	8.379	1615.1E6	709.9E6	734.337	734.782
9) T	2,4-D	8.035	8.694	1783.9E6	757.9E6	740.334	702.770
10) T	Pentachlo...	8.314	9.195	22086.2E6	13822.3E6	726.402	771.001
11) T	2,4,5-TP ...	8.879	9.573	8702.5E6	5531.7E6	749.224	766.910
12) T	2,4,5-T	9.161	9.978	8861.7E6	5217.0E6	770.289	778.328
13) T	2,4-DB	9.719	10.536	1454.1E6	537.1E6	800.409	723.889
14) T	DINOSEB	10.884	10.909	6119.2E6	3700.4E6	724.853	723.760
15) T	Picloram	10.702	11.945	11085.2E6	7538.7E6	715.155	637.552m
16) T	DCPA	11.185	11.935	10784.0E6	5619.0E6	772.153	634.872m

(f)=RT Delta > 1/2 Window (#)=Amounts differ by > 25% (m)=manual int.

Data Path : Z:\pestpcbsrv\HPCHEM1\ECD\_S\Data\PS041125\  
 Data File : PS029810.D  
 Signal(s) : Signal #1: ECD1A.ch Signal #2: ECD2B.ch  
 Acq On : 11 Apr 2025 15:07  
 Operator : AR\AJ  
 Sample : HSTDCCC750  
 Misc :  
 ALS Vial : 3 Sample Multiplier: 1

**Instrument :**

ECD\_S

**ClientSampleId :**

HSTDCCC750

**Manual Integrations**

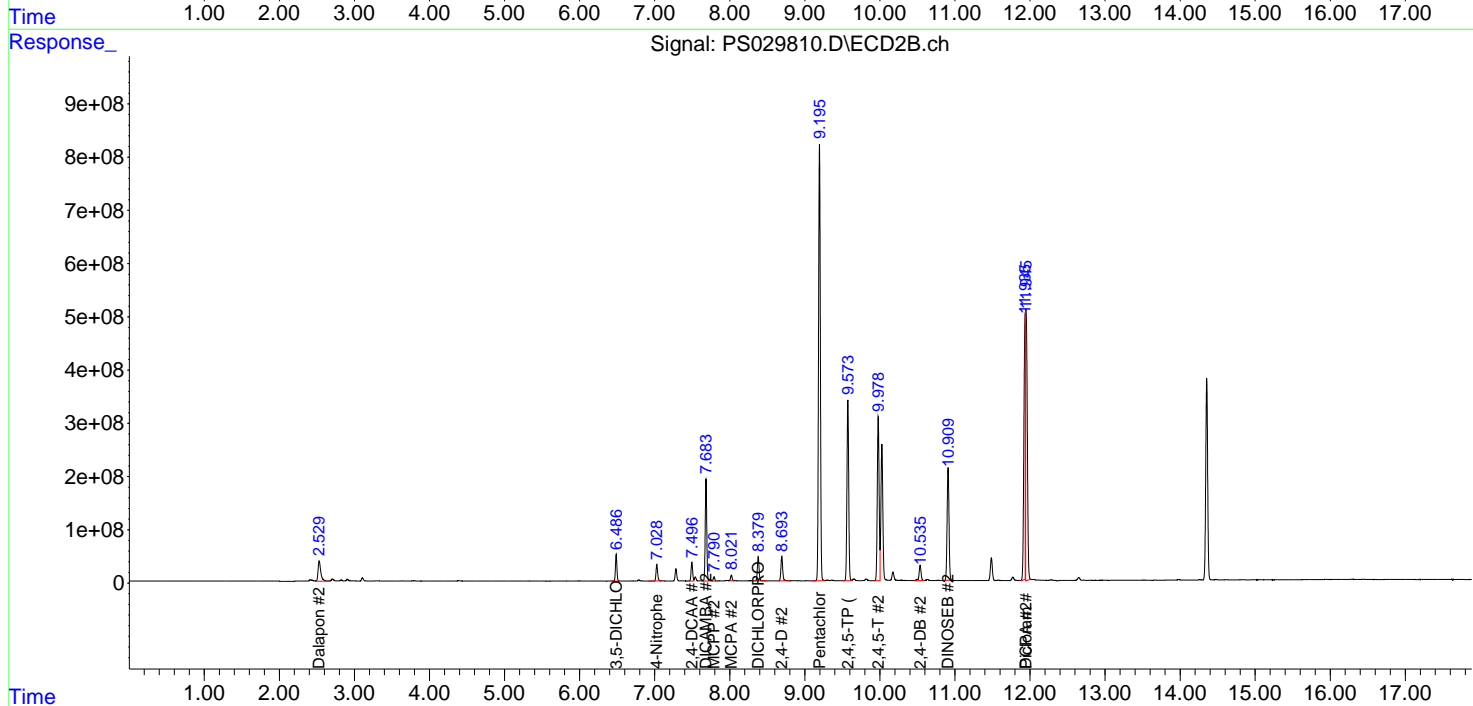
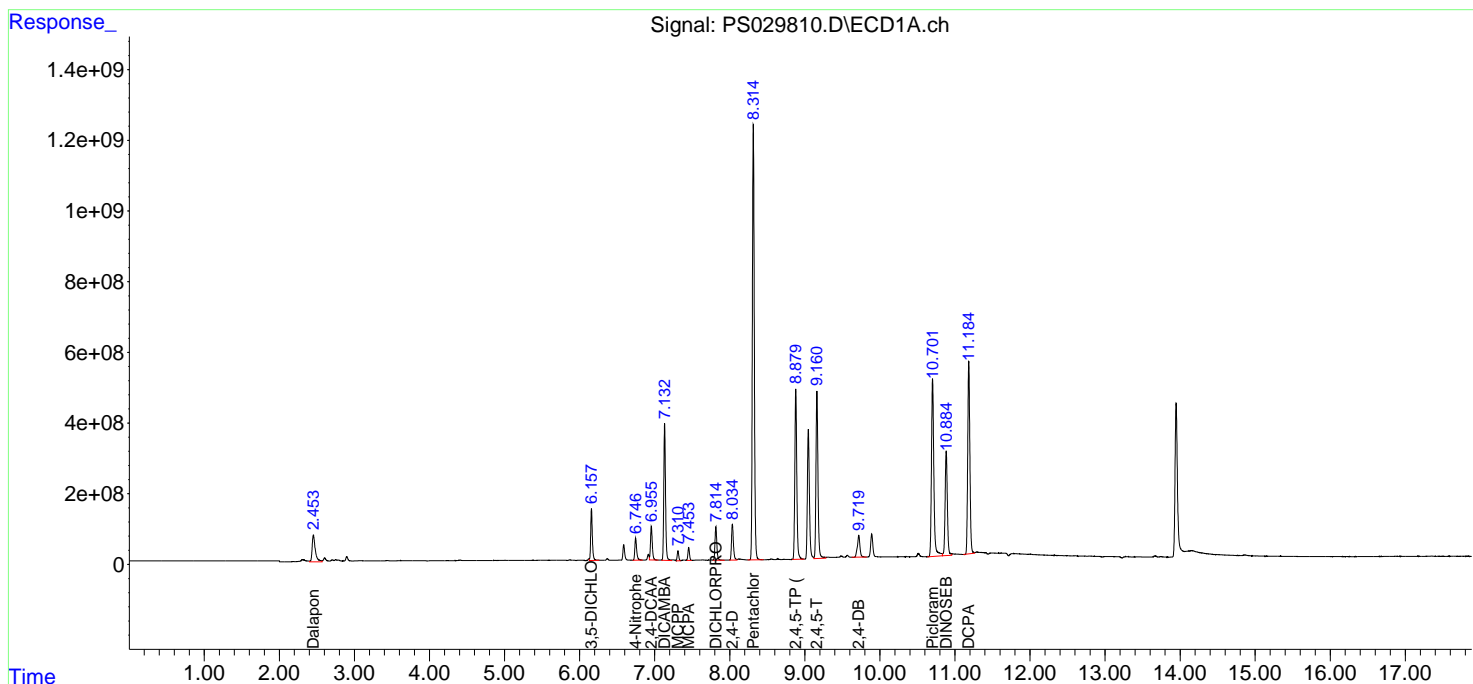
**APPROVED**

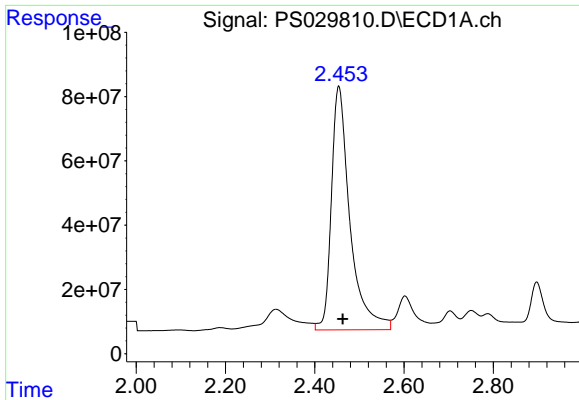
Reviewed By :Abdul Mirza 04/14/2025

Supervised By :mohammad ahmed 04/15/2025

Integration File signal 1: autoint1.e  
 Integration File signal 2: autoint2.e  
 Quant Time: Apr 12 00:03:13 2025  
 Quant Method : Z:\pestpcbsrv\HPCHEM1\ECD\_S\Method\PS040225.M  
 Quant Title : 8080.M  
 QLast Update : Wed Apr 02 23:52:55 2025  
 Response via : Initial Calibration  
 Integrator: ChemStation

Volume Inj. : 1 µl  
 Signal #1 Phase : ZB-MR1 Signal #2 Phase: ZB-MR2  
 Signal #1 Info : 30M x 0.32mm x0.5 Signal #2 Info : 30M x 0.32mm x 0.25µm





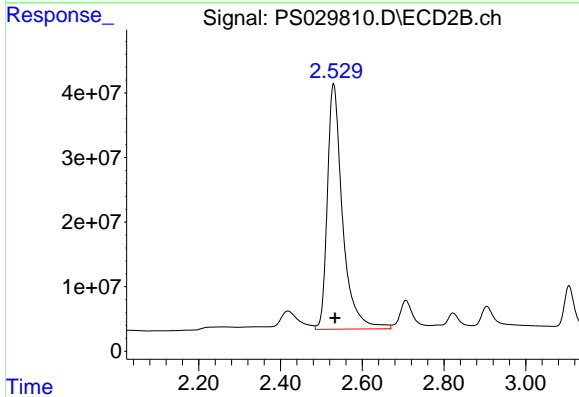
#1 Dalapon

R.T.: 2.454 min  
 Delta R.T.: -0.009 min  
 Response: 2191231529  
 Conc: 645.92 ng/ml

Instrument :  
 ECD\_S  
 ClientSampleId :  
 HSTDCCC750

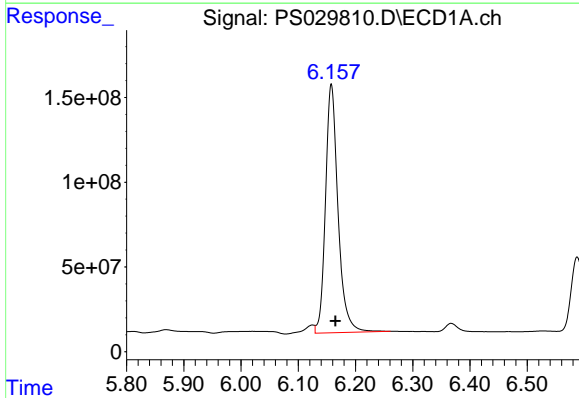
Manual Integrations  
 APPROVED

Reviewed By :Abdul Mirza 04/14/2025  
 Supervised By :mohammad ahmed 04/15/2025



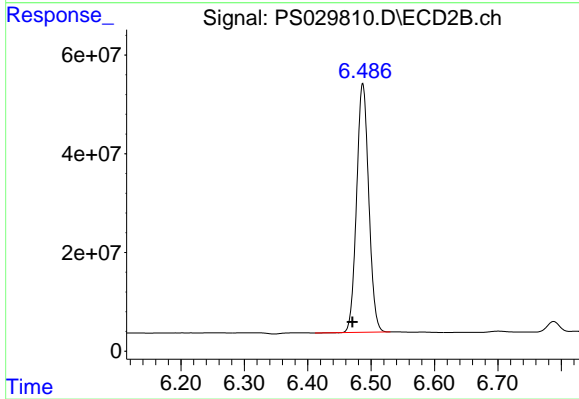
#1 Dalapon

R.T.: 2.530 min  
 Delta R.T.: -0.004 min  
 Response: 980319846  
 Conc: 617.49 ng/ml



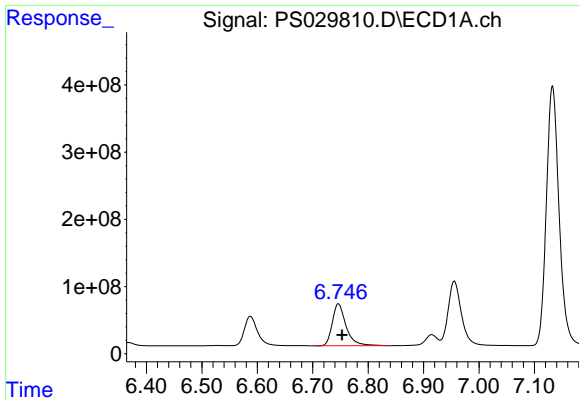
#2 3,5-DICHLOROBENZOIC ACID

R.T.: 6.158 min  
 Delta R.T.: -0.007 min  
 Response: 2225194787  
 Conc: 739.82 ng/ml



#2 3,5-DICHLOROBENZOIC ACID

R.T.: 6.487 min  
 Delta R.T.: 0.017 min  
 Response: 669324968  
 Conc: 693.20 ng/ml



#3 4-Nitrophenol

R.T.: 6.746 min  
 Delta R.T.: -0.007 min  
 Response: 1074725817  
 Conc: 765.04 ng/ml

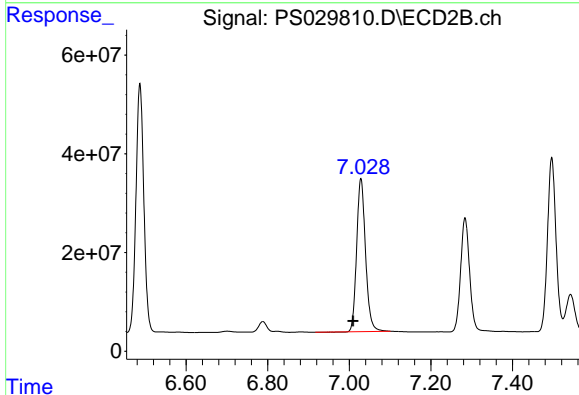
Instrument :

ECD\_S

ClientSampleId :  
 HSTDCCC750

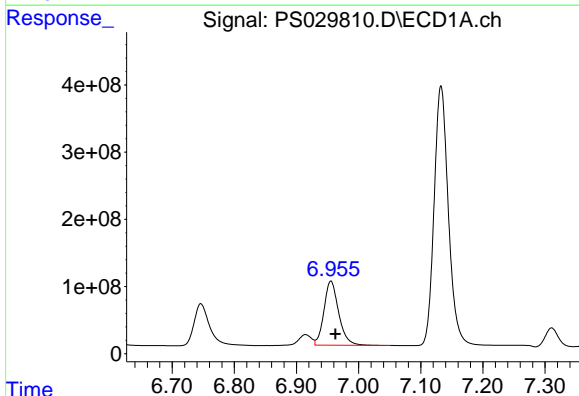
Manual Integrations  
 APPROVED

Reviewed By :Abdul Mirza 04/14/2025  
 Supervised By :mohammad ahmed 04/15/2025



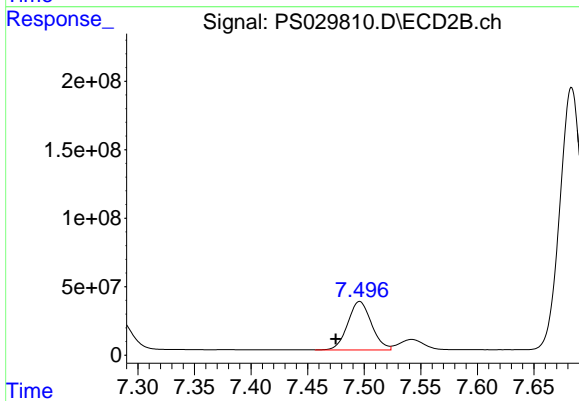
#3 4-Nitrophenol

R.T.: 7.028 min  
 Delta R.T.: 0.019 min  
 Response: 469126066  
 Conc: 661.67 ng/ml



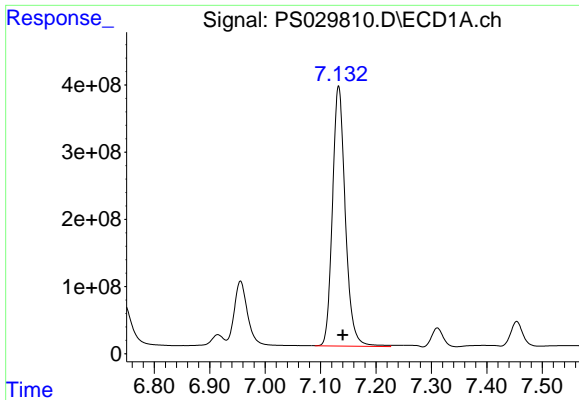
#4 2,4-DCAA

R.T.: 6.955 min  
 Delta R.T.: -0.007 min  
 Response: 1573767400  
 Conc: 771.90 ng/ml



#4 2,4-DCAA

R.T.: 7.496 min  
 Delta R.T.: 0.021 min  
 Response: 517647502  
 Conc: 759.56 ng/ml



#5 DICAMBA

R.T.: 7.133 min  
 Delta R.T.: -0.007 min  
 Response: 6228471527  
 Conc: 748.44 ng/ml

Instrument :

ECD\_S

ClientSampleId :

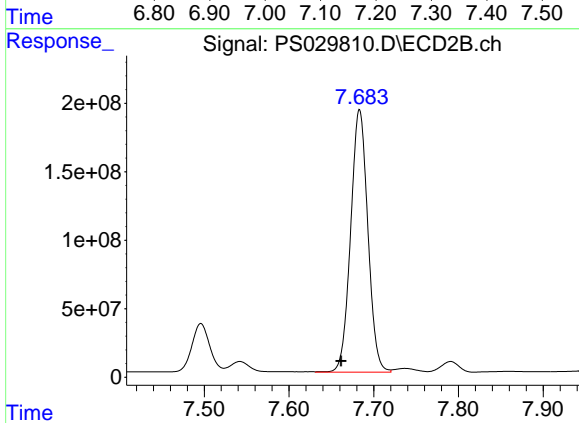
HSTDCCC750

Manual Integrations

APPROVED

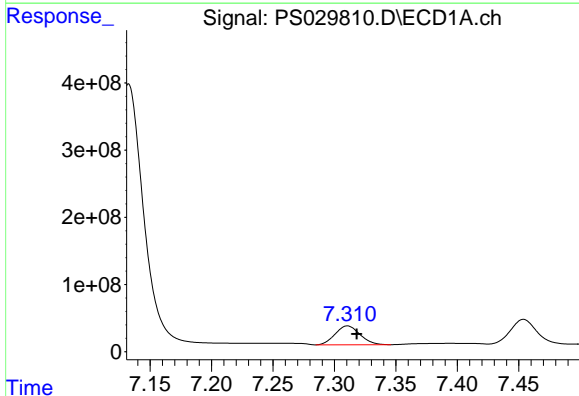
Reviewed By :Abdul Mirza 04/14/2025

Supervised By :mohammad ahmed 04/15/2025



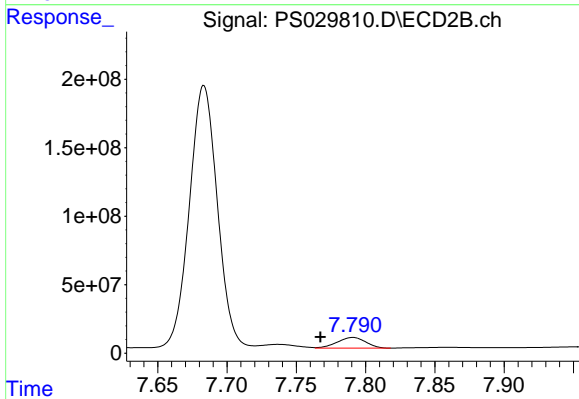
#5 DICAMBA

R.T.: 7.683 min  
 Delta R.T.: 0.022 min  
 Response: 2702121867  
 Conc: 731.61 ng/ml



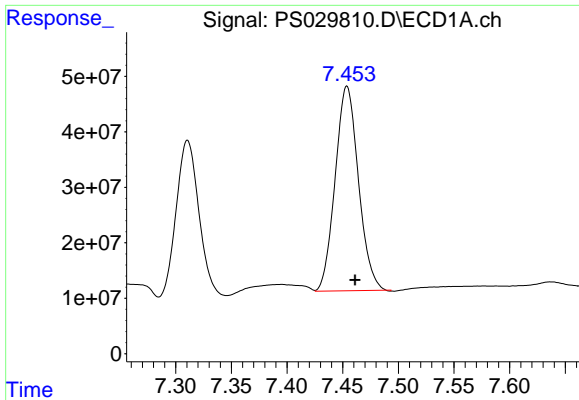
#6 MCPP

R.T.: 7.311 min  
 Delta R.T.: -0.008 min  
 Response: 395043594  
 Conc: 72.89 ug/ml



#6 MCPP

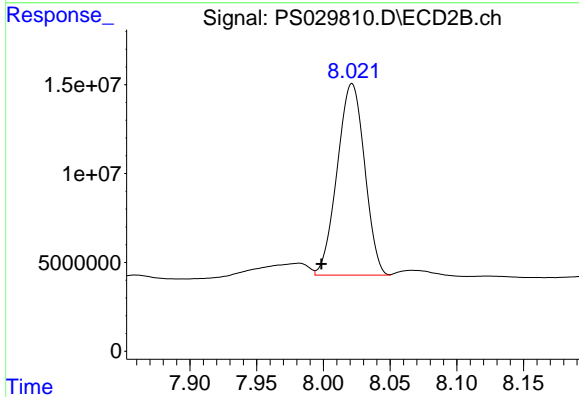
R.T.: 7.791 min  
 Delta R.T.: 0.023 min  
 Response: 112289342  
 Conc: 66.50 ug/ml



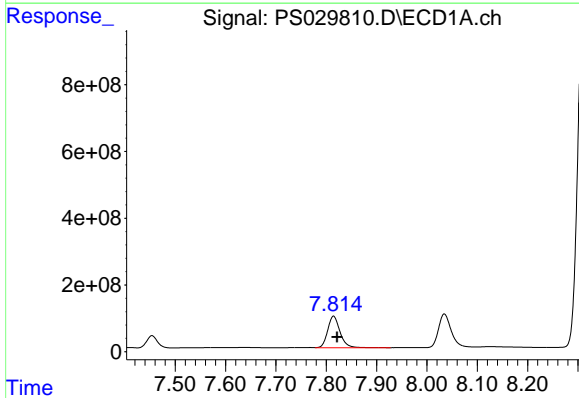
#7 MCPA  
 R.T.: 7.453 min  
 Delta R.T.: -0.008 min  
 Response: 536775087  
 Conc: 73.84 ug/ml

Instrument :  
 ECD\_S  
 ClientSampleId :  
 HSTDCCC750

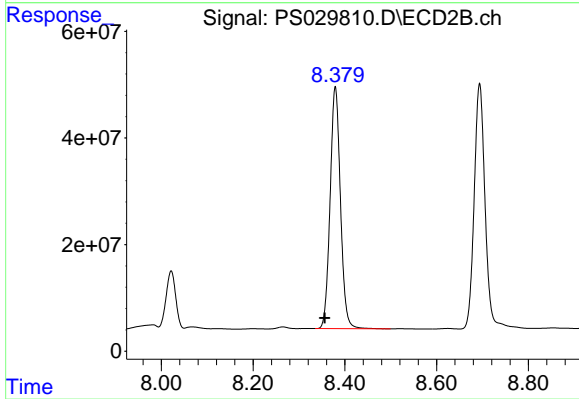
**Manual Integrations**  
**APPROVED**  
 Reviewed By :Abdul Mirza 04/14/2025  
 Supervised By :mohammad ahmed 04/15/2025



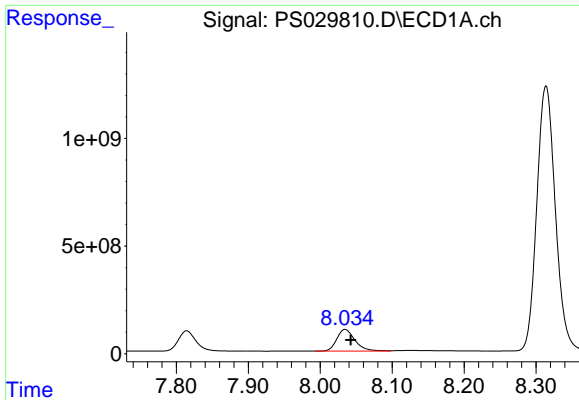
#7 MCPA  
 R.T.: 8.021 min  
 Delta R.T.: 0.022 min  
 Response: 153881882  
 Conc: 67.63 ug/ml m



#8 DICHLORPROP  
 R.T.: 7.814 min  
 Delta R.T.: -0.007 min  
 Response: 1615129243  
 Conc: 734.34 ng/ml



#8 DICHLORPROP  
 R.T.: 8.379 min  
 Delta R.T.: 0.023 min  
 Response: 709911353  
 Conc: 734.78 ng/ml

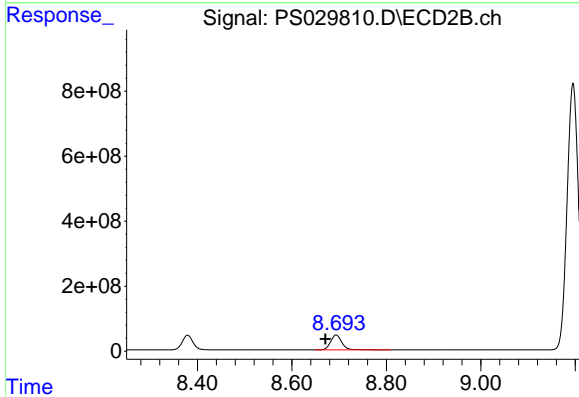


#9 2,4-D  
 R.T.: 8.035 min  
 Delta R.T.: -0.008 min  
 Response: 1783902369  
 Conc: 740.33 ng/ml

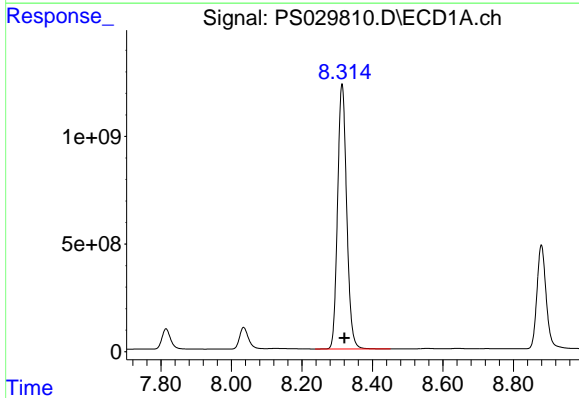
Instrument :  
 ECD\_S  
 ClientSampleId :  
 HSTDCCC750

Manual Integrations  
 APPROVED

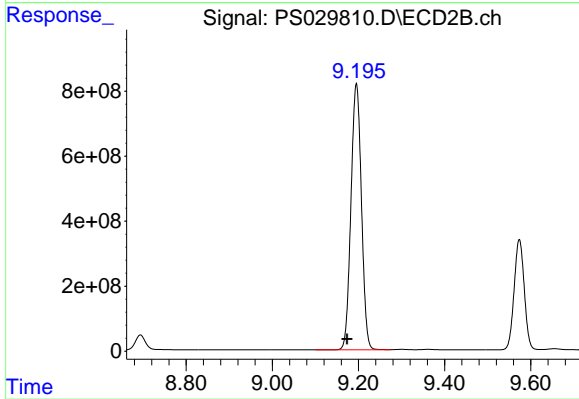
Reviewed By :Abdul Mirza 04/14/2025  
 Supervised By :mohammad ahmed 04/15/2025



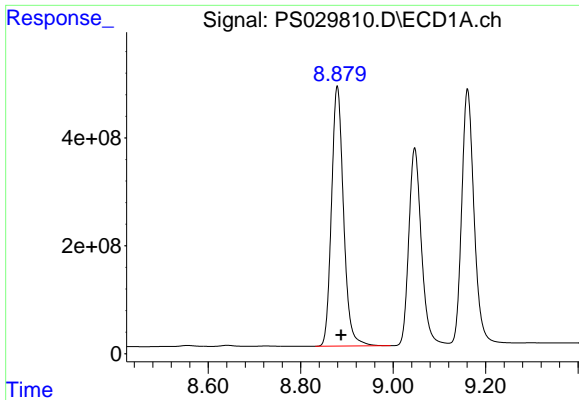
#9 2,4-D  
 R.T.: 8.694 min  
 Delta R.T.: 0.023 min  
 Response: 757912229  
 Conc: 702.77 ng/ml



#10 Pentachlorophenol  
 R.T.: 8.314 min  
 Delta R.T.: -0.007 min  
 Response: 22086239986  
 Conc: 726.40 ng/ml



#10 Pentachlorophenol  
 R.T.: 9.195 min  
 Delta R.T.: 0.022 min  
 Response: 13822291891  
 Conc: 771.00 ng/ml



#11 2,4,5-TP (SILVEX)

R.T.: 8.879 min  
 Delta R.T.: -0.009 min  
 Response: 8702504216  
 Conc: 749.22 ng/ml

Instrument :

ECD\_S

ClientSampleId :

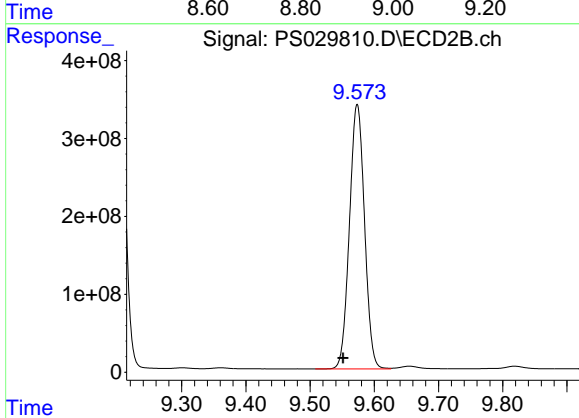
HSTDCCC750

Manual Integrations

APPROVED

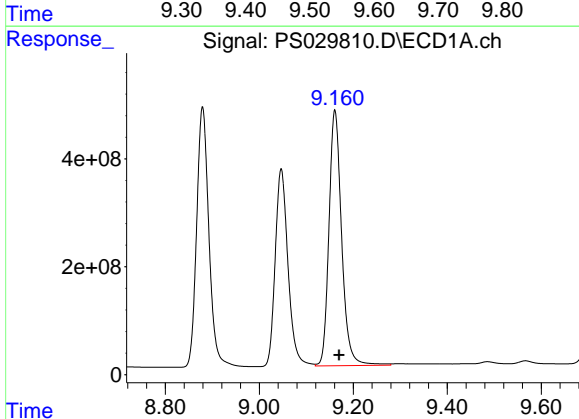
Reviewed By :Abdul Mirza 04/14/2025

Supervised By :mohammad ahmed 04/15/2025



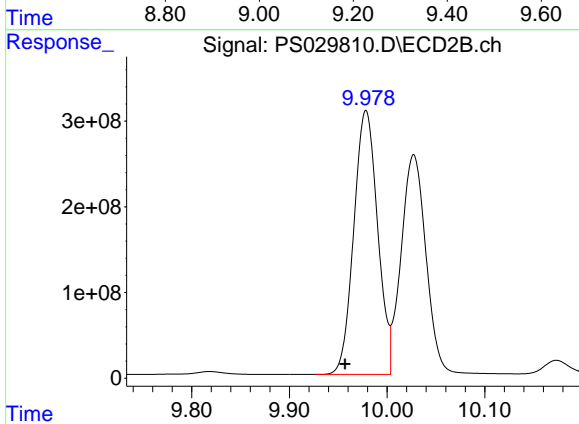
#11 2,4,5-TP (SILVEX)

R.T.: 9.573 min  
 Delta R.T.: 0.022 min  
 Response: 5531689002  
 Conc: 766.91 ng/ml



#12 2,4,5-T

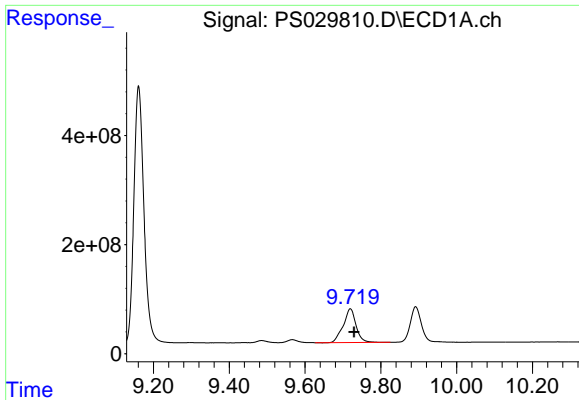
R.T.: 9.161 min  
 Delta R.T.: -0.009 min  
 Response: 8861736399  
 Conc: 770.29 ng/ml



#12 2,4,5-T

R.T.: 9.978 min  
 Delta R.T.: 0.022 min  
 Response: 5217005941  
 Conc: 778.33 ng/ml



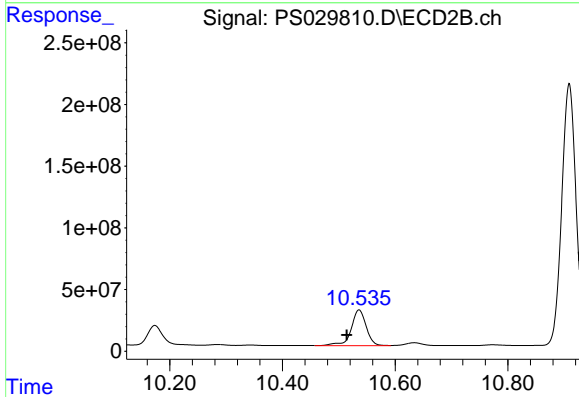


#13 2,4-DB  
 R.T.: 9.719 min  
 Delta R.T.: -0.010 min  
 Response: 1454137870  
 Conc: 800.41 ng/ml

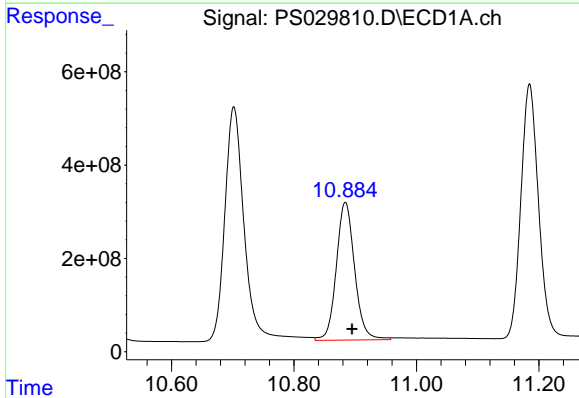
Instrument :  
 ECD\_S  
 ClientSampleId :  
 HSTDCCC750

Manual Integrations  
 APPROVED

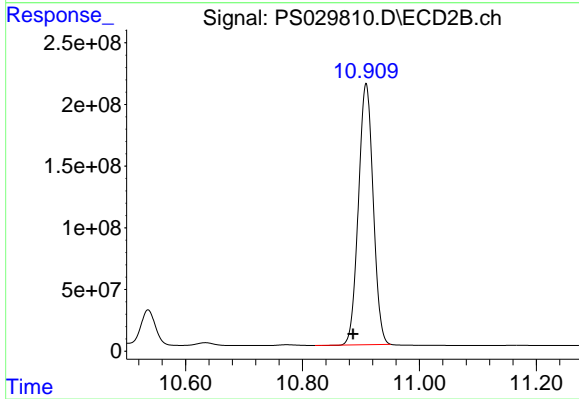
Reviewed By :Abdul Mirza 04/14/2025  
 Supervised By :mohammad ahmed 04/15/2025



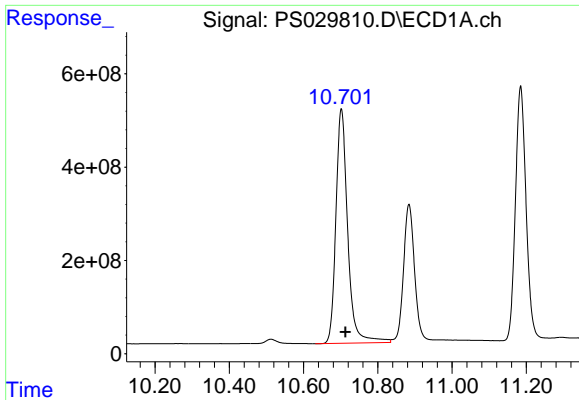
#13 2,4-DB  
 R.T.: 10.536 min  
 Delta R.T.: 0.022 min  
 Response: 537107595  
 Conc: 723.89 ng/ml



#14 DINOSEB  
 R.T.: 10.884 min  
 Delta R.T.: -0.011 min  
 Response: 6119241089  
 Conc: 724.85 ng/ml



#14 DINOSEB  
 R.T.: 10.909 min  
 Delta R.T.: 0.022 min  
 Response: 3700439739  
 Conc: 723.76 ng/ml



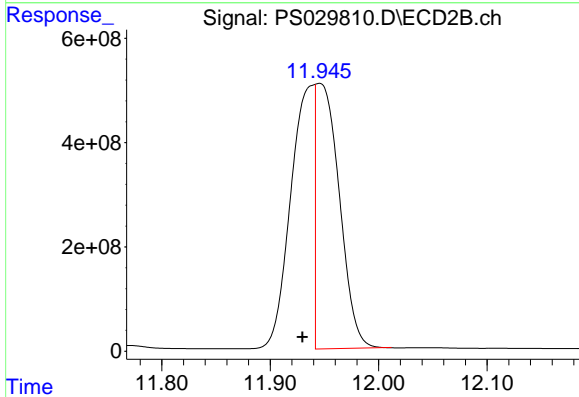
#15 Picloram

R.T.: 10.702 min  
 Delta R.T.: -0.011 min  
 Response: 11085188406  
 Conc: 715.16 ng/ml

Instrument :  
 ECD\_S  
 ClientSampleId :  
 HSTDCCC750

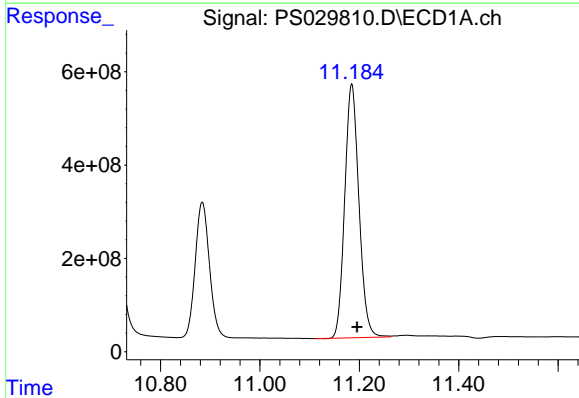
Manual Integrations  
 APPROVED

Reviewed By :Abdul Mirza 04/14/2025  
 Supervised By :mohammad ahmed 04/15/2025



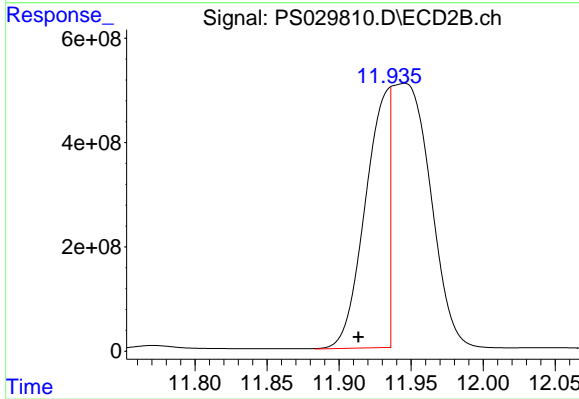
#15 Picloram

R.T.: 11.945 min  
 Delta R.T.: 0.016 min  
 Response: 7538692205  
 Conc: 637.55 ng/ml m



#16 DCPA

R.T.: 11.185 min  
 Delta R.T.: -0.011 min  
 Response: 10783973455  
 Conc: 772.15 ng/ml



#16 DCPA

R.T.: 11.935 min  
 Delta R.T.: 0.022 min  
 Response: 5619041041  
 Conc: 634.87 ng/ml m