

Data Path : Z:\pestpcbsrv\HPCHEM1\ECD_S\Data\PS041221\
 Data File : PS014568.D
 Signal(s) : Signal #1: ECD1A.ch Signal #2: ECD2B.ch
 Acq On : 12 Apr 2021 19:15
 Operator : DD\AJ
 Sample : M1966-05
 Misc :
 ALS Vial : 16 Sample Multiplier: 1

Instrument :
 ECD_S
 ClientSampleId :

Integration File signal 1: autoint1.e
 Integration File signal 2: autoint2.e
 Quant Time: Apr 13 06:09:18 2021
 Quant Method : Z:\pestpcbsrv\HPCHEM1\ECD_S\Method\PS040821.M
 Quant Title : 8080.M
 QLast Update : Thu Apr 08 14:34:06 2021
 Response via : Initial Calibration
 Integrator: ChemStation

Volume Inj. : 2 µl
 Signal #1 Phase : Rtx-CLPesticides Signal #2 Phase: Rtx-CLPesticides2
 Signal #1 Info : 30M x 0.32mm x0.5 Signal #2 Info : 30M x 0.32mm x 0.25µm

	Compound	RT#1	RT#2	Resp#1	Resp#2	ng/ml	ng/ml

System Monitoring Compounds							
4) S	2,4-DCAA	7.158	6.883	718.7E6	252.2E6	472.483	541.905
Target Compounds							
1) T	Dalapon	2.961f	2.599	197.1E6	99312201	109.301	152.594 #
2) T	3,5-DICHL...	6.423	6.044	6517.4E6	-2133298	3145.441	N.D. #
3) T	4-Nitroph...	6.988	6.487	28283903	25706242	34.806	91.049 #
5) T	DICAMBA	7.332	7.016	14936854	19825345	2.567	9.802 #
6) T	MCP P	7.511	7.113f	13651555	2061.2E6	3.135	1223.930 #
7) T	MCPA	7.647	7.344	55804347	60636319	8.968	24.968 #
8) T	DICHLORPROP	8.041	7.702	7303536	11372377	5.219	22.528 #
9) T	2,4-D	8.268	7.954	25295353	17917777	15.909	32.221 #
10) T	Pentachlo...	8.594	8.424	134.1E6	9110498	6.379	1.355 #
11) T	2,4,5-TP ...	9.107	8.724	7980280	150.3E6	<MDL	55.034 #
12) T	2,4,5-T	9.417	9.123	11858383	8313658	1.442	3.179 #
13) T	2,4-DB	9.900f	9.630	28008142	8033724	18.405	23.160 #
14) T	DINOSEB	11.126	9.981	14896680	92605907	2.312	48.090 #
15) T	Picloram	10.975f	10.977	929.5E6	16954356	83.081	4.521 #
16) T	DCPA	11.381	10.893	11377110	112.1E6	<MDL	27.598 #

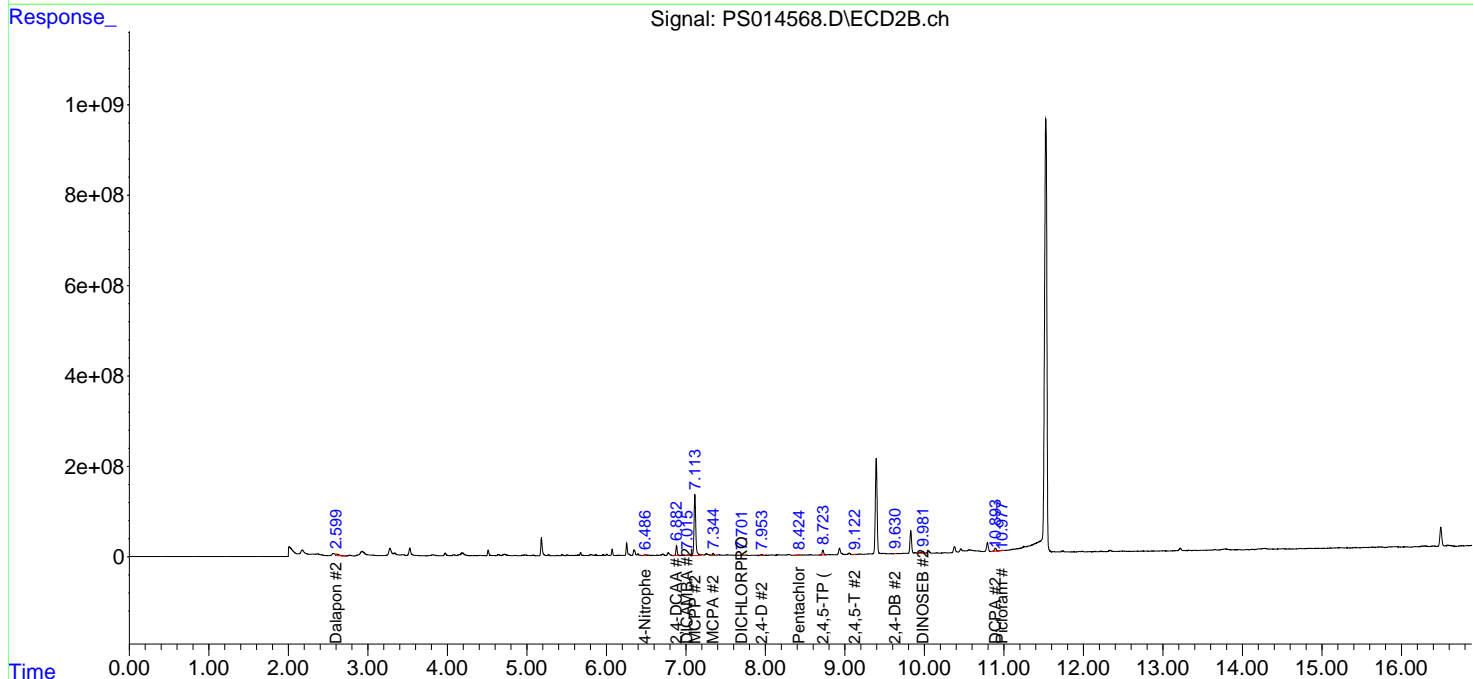
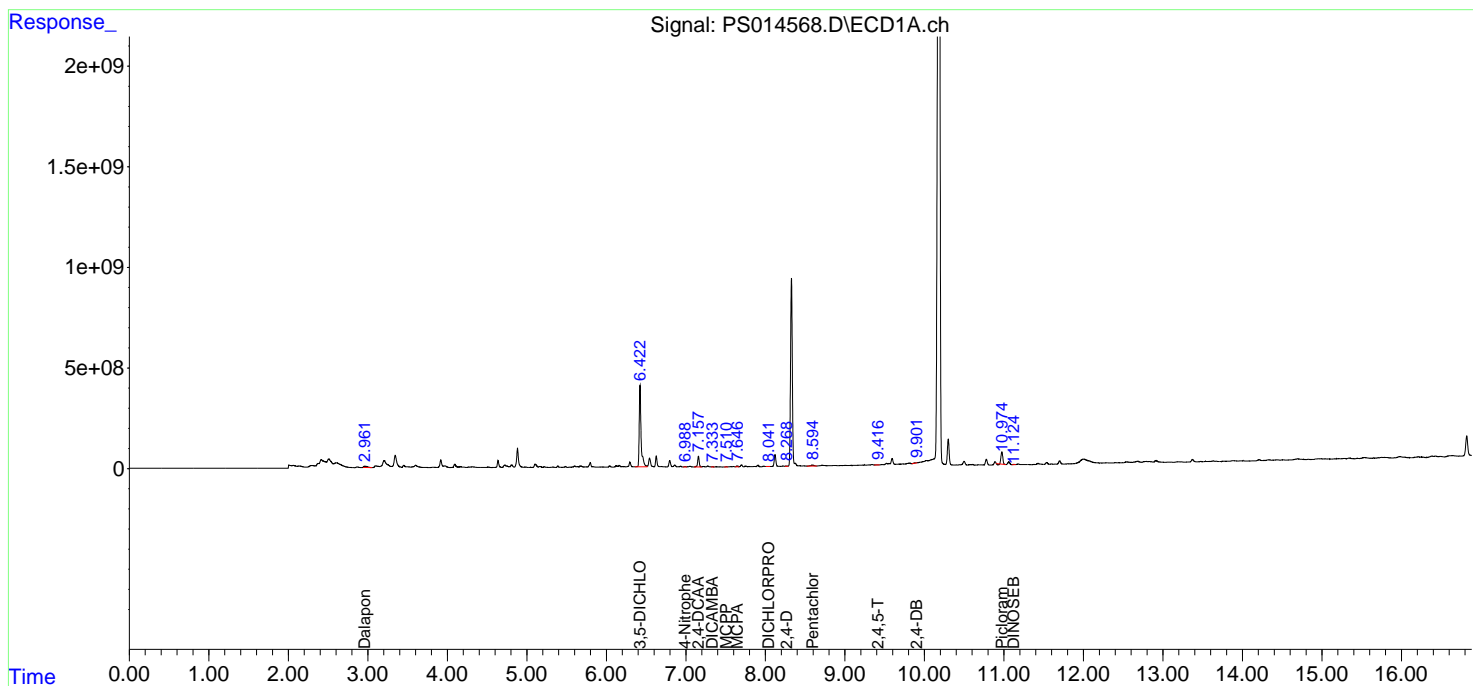
(f)=RT Delta > 1/2 Window (#)=Amounts differ by > 25% (m)=manual int.

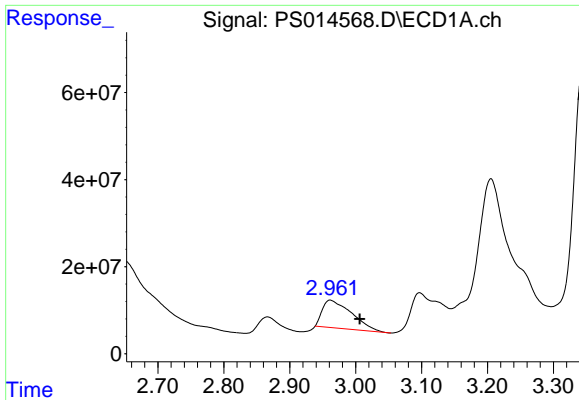
Data Path : Z:\pestpcbsrv\HPCHEM1\ECD_S\Data\PS041221\
 Data File : PS014568.D
 Signal(s) : Signal #1: ECD1A.ch Signal #2: ECD2B.ch
 Acq On : 12 Apr 2021 19:15
 Operator : DD\AJ
 Sample : M1966-05
 Misc :
 ALS Vial : 16 Sample Multiplier: 1

Instrument :
 ECD_S
 ClientSampled :

Integration File signal 1: autoint1.e
 Integration File signal 2: autoint2.e
 Quant Time: Apr 13 06:09:18 2021
 Quant Method : Z:\pestpcbsrv\HPCHEM1\ECD_S\Method\PS040821.M
 Quant Title : 8080.M
 QLast Update : Thu Apr 08 14:34:06 2021
 Response via : Initial Calibration
 Integrator: ChemStation

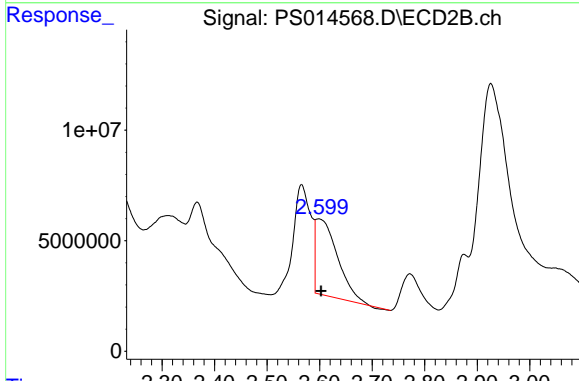
Volume Inj. : 2 µl
 Signal #1 Phase : Rtx-CLPesticides Signal #2 Phase: Rtx-CLPesticides2
 Signal #1 Info : 30M x 0.32mm x0.5 Signal #2 Info : 30M x 0.32mm x 0.25µm



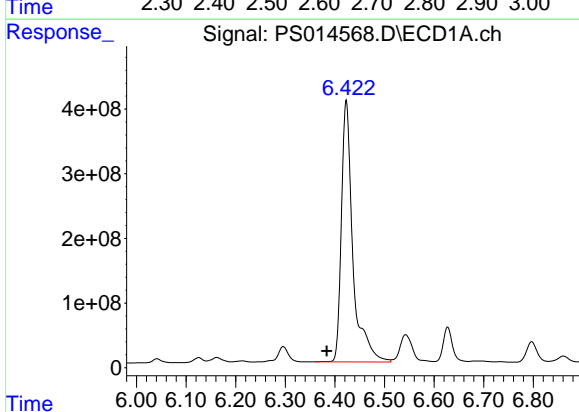


#1 Dalapon
 R.T.: 2.961 min
 Delta R.T.: -0.045 min
 Response: 197088412
 Conc: 109.30 ng/ml

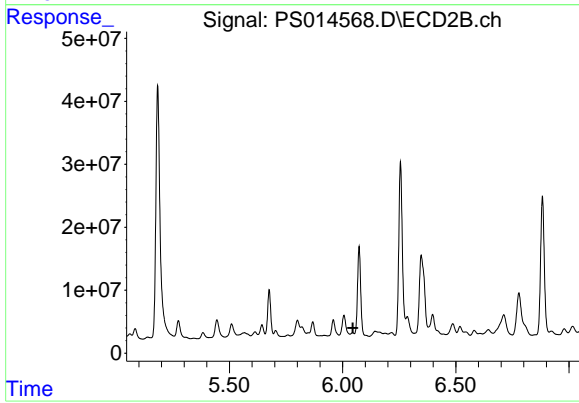
Instrument :
 ECD_S
 ClientSampleId :



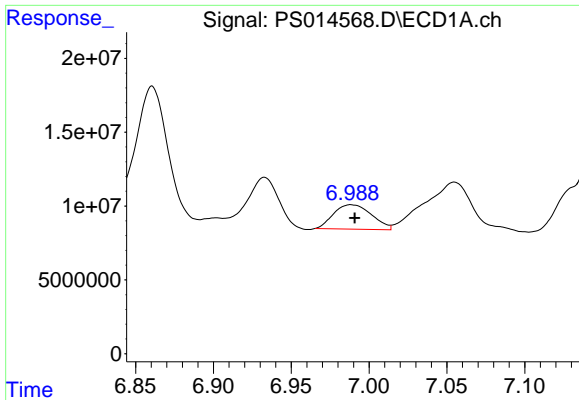
#1 Dalapon
 R.T.: 2.599 min
 Delta R.T.: -0.004 min
 Response: 99312201
 Conc: 152.59 ng/ml



#2 3,5-DICHLOROBENZOIC ACID
 R.T.: 6.423 min
 Delta R.T.: 0.039 min
 Response: 6517363023
 Conc: 3145.44 ng/ml

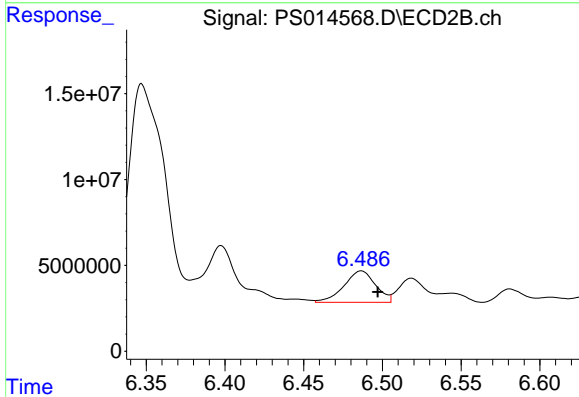


#2 3,5-DICHLOROBENZOIC ACID
 R.T.: 6.044 min
 Delta R.T.: -0.001 min
 Response: -2133298
 Conc: N.D.

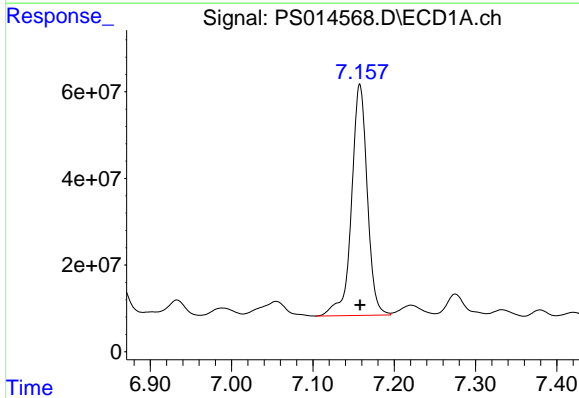


#3 4-Nitrophenol
 R.T.: 6.988 min
 Delta R.T.: -0.002 min
 Response: 28283903
 Conc: 34.81 ng/ml

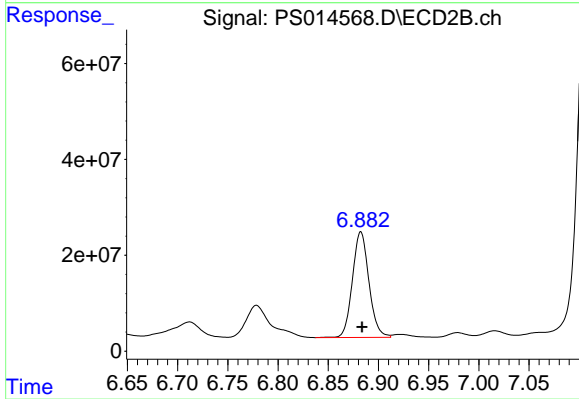
Instrument :
 ECD_S
 ClientSampled :



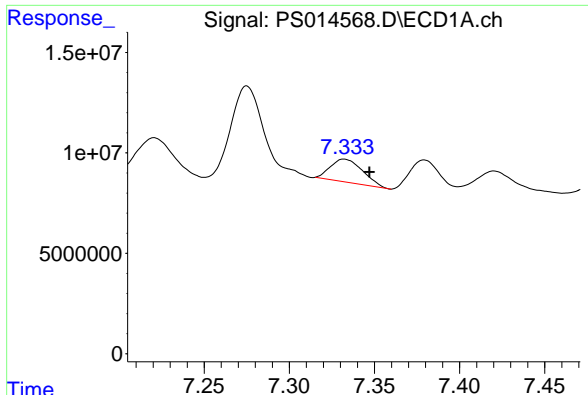
#3 4-Nitrophenol
 R.T.: 6.487 min
 Delta R.T.: -0.011 min
 Response: 25706242
 Conc: 91.05 ng/ml



#4 2,4-DCAA
 R.T.: 7.158 min
 Delta R.T.: 0.000 min
 Response: 718738613
 Conc: 472.48 ng/ml

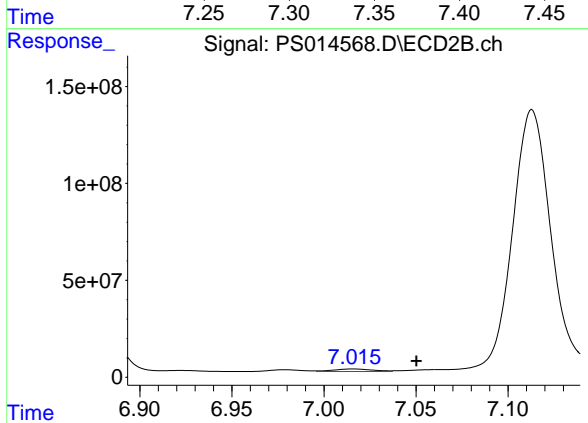


#4 2,4-DCAA
 R.T.: 6.883 min
 Delta R.T.: -0.001 min
 Response: 252232336
 Conc: 541.91 ng/ml

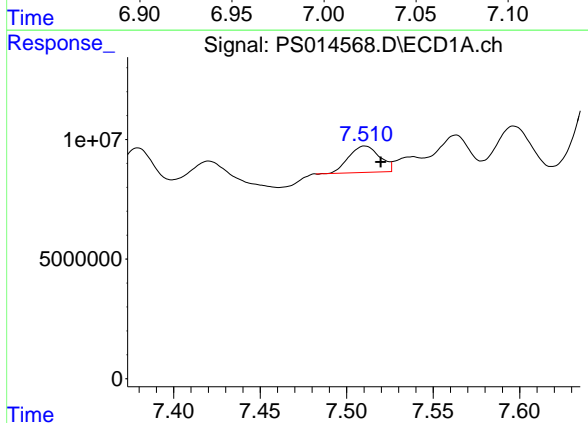


#5 DICAMBA
 R.T.: 7.332 min
 Delta R.T.: -0.015 min
 Response: 14936854
 Conc: 2.57 ng/ml

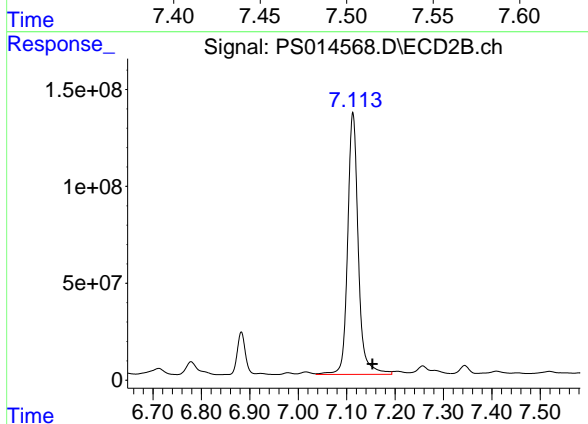
Instrument :
 ECD_S
 ClientSampleId :



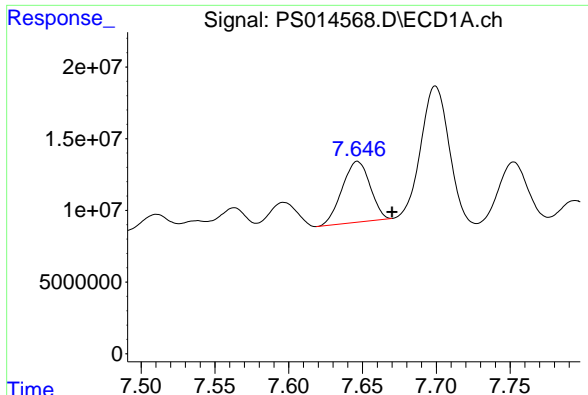
#5 DICAMBA
 R.T.: 7.016 min
 Delta R.T.: -0.034 min
 Response: 19825345
 Conc: 9.80 ng/ml



#6 MCP
 R.T.: 7.511 min
 Delta R.T.: -0.009 min
 Response: 13651555
 Conc: 3.14 ug/ml



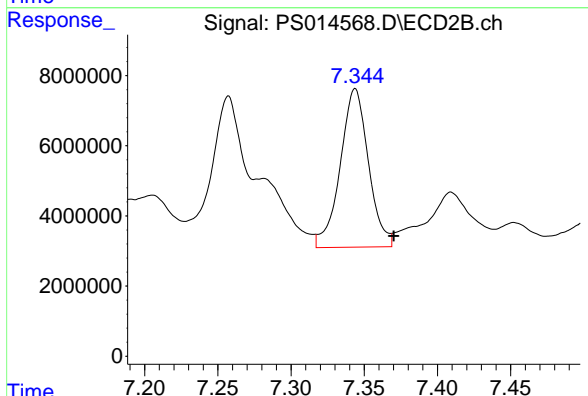
#6 MCP
 R.T.: 7.113 min
 Delta R.T.: -0.040 min
 Response: 2061160765
 Conc: 1223.93 ug/ml



#7 MCPA

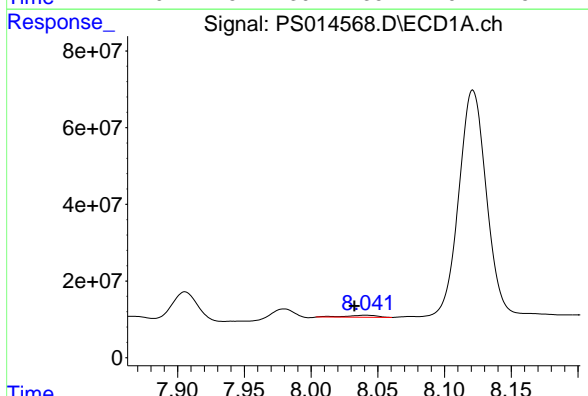
R.T.: 7.647 min
 Delta R.T.: -0.023 min
 Response: 55804347
 Conc: 8.97 ug/ml

Instrument :
 ECD_S
 ClientSampled :



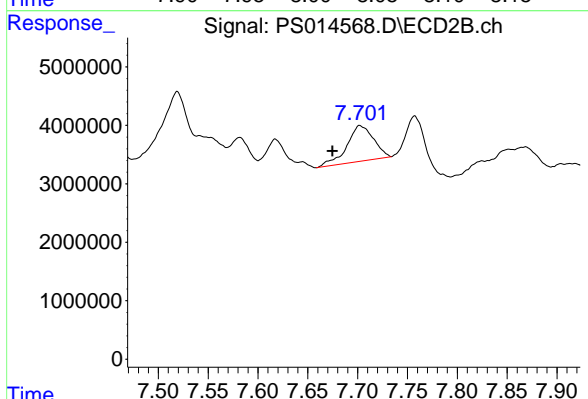
#7 MCPA

R.T.: 7.344 min
 Delta R.T.: -0.026 min
 Response: 60636319
 Conc: 24.97 ug/ml



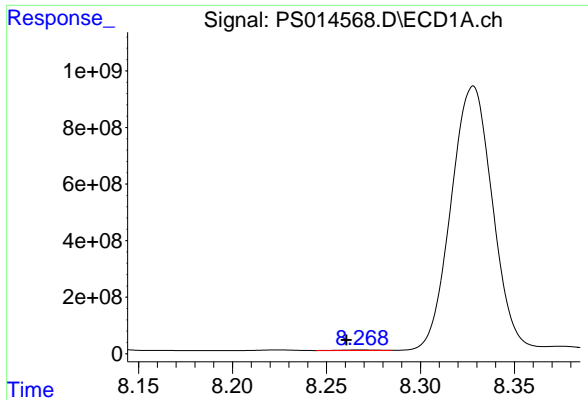
#8 DICHLORPROP

R.T.: 8.041 min
 Delta R.T.: 0.008 min
 Response: 7303536
 Conc: 5.22 ng/ml



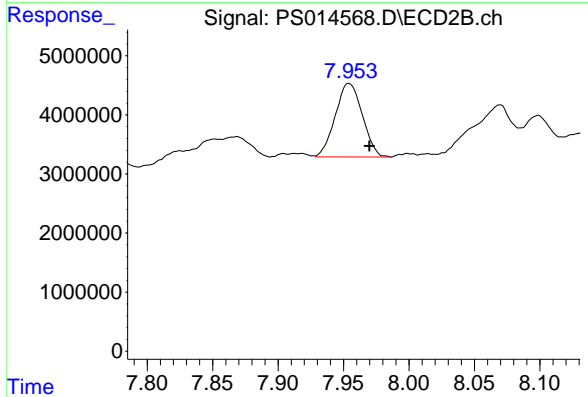
#8 DICHLORPROP

R.T.: 7.702 min
 Delta R.T.: 0.027 min
 Response: 11372377
 Conc: 22.53 ng/ml

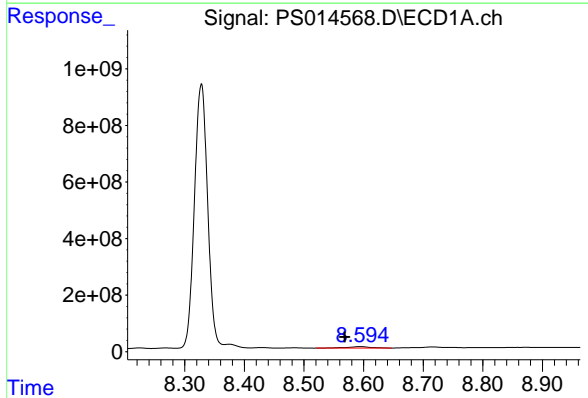


#9 2,4-D
 R.T.: 8.268 min
 Delta R.T.: 0.007 min
 Response: 25295353
 Conc: 15.91 ng/ml

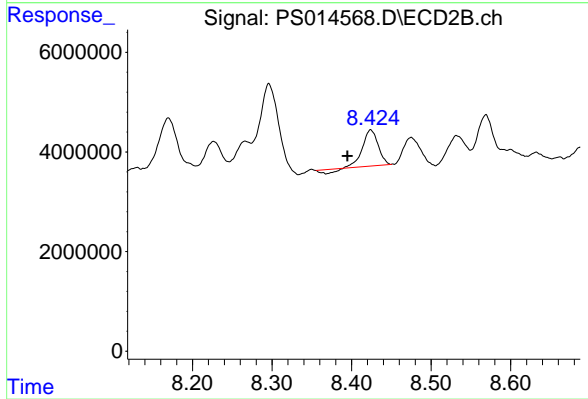
Instrument :
 ECD_S
 ClientSampleId :



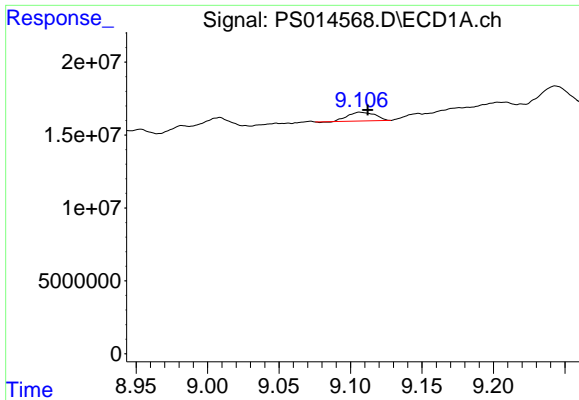
#9 2,4-D
 R.T.: 7.954 min
 Delta R.T.: -0.016 min
 Response: 17917777
 Conc: 32.22 ng/ml



#10 Pentachlorophenol
 R.T.: 8.594 min
 Delta R.T.: 0.026 min
 Response: 134068127
 Conc: 6.38 ng/ml

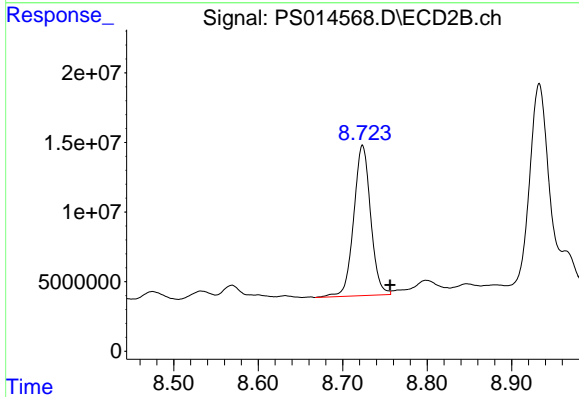


#10 Pentachlorophenol
 R.T.: 8.424 min
 Delta R.T.: 0.029 min
 Response: 9110498
 Conc: 1.36 ng/ml

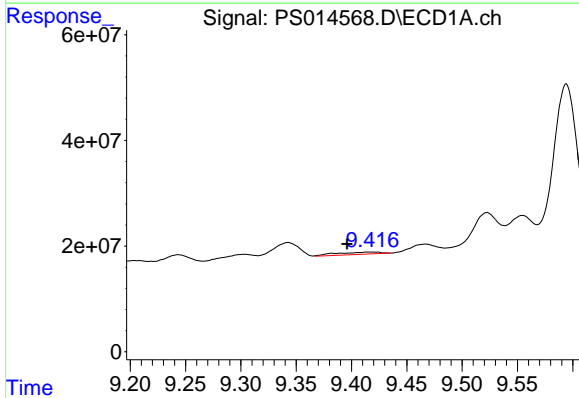


#11 2,4,5-TP (SILVEX)
 R.T.: 9.107 min
 Delta R.T.: -0.005 min
 Response: 7980280
 Conc: N.D.

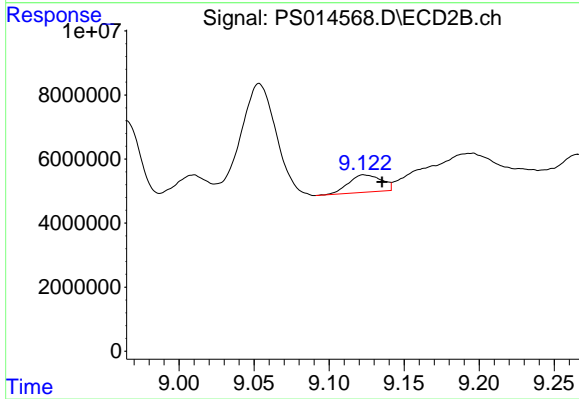
Instrument :
 ECD_S
 ClientSampled :



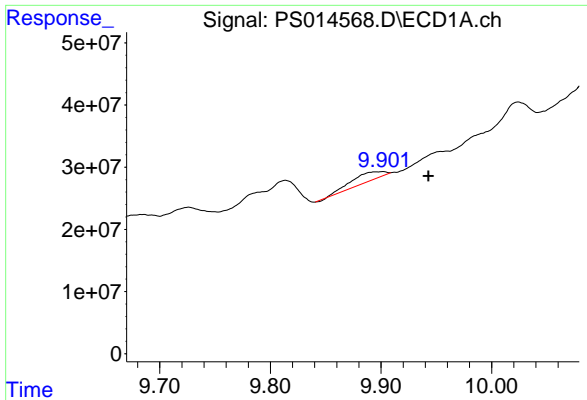
#11 2,4,5-TP (SILVEX)
 R.T.: 8.724 min
 Delta R.T.: -0.033 min
 Response: 150335905
 Conc: 55.03 ng/ml



#12 2,4,5-T
 R.T.: 9.417 min
 Delta R.T.: 0.021 min
 Response: 11858383
 Conc: 1.44 ng/ml

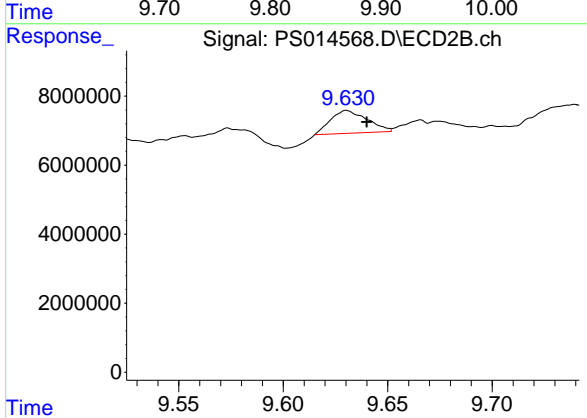


#12 2,4,5-T
 R.T.: 9.123 min
 Delta R.T.: -0.012 min
 Response: 8313658
 Conc: 3.18 ng/ml

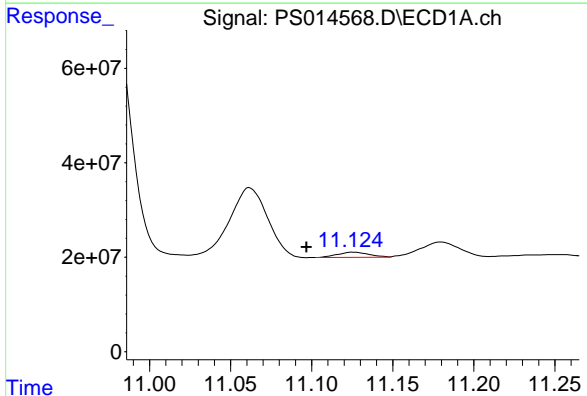


#13 2,4-DB
 R.T.: 9.900 min
 Delta R.T.: -0.043 min
 Response: 28008142
 Conc: 18.41 ng/ml

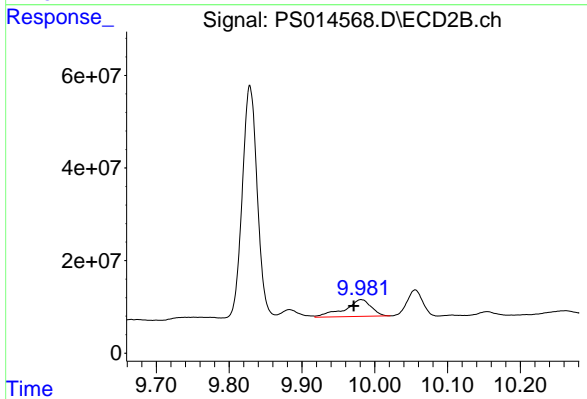
Instrument :
 ECD_S
 ClientSampled :



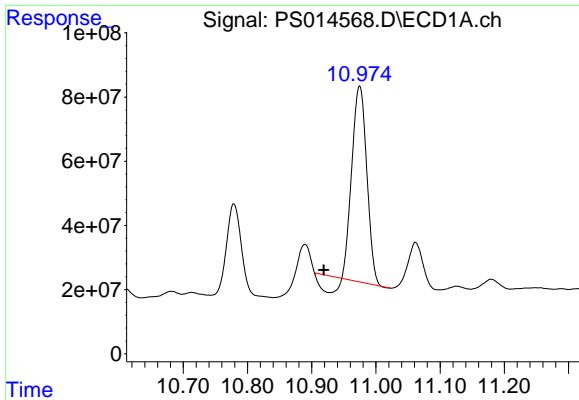
#13 2,4-DB
 R.T.: 9.630 min
 Delta R.T.: -0.010 min
 Response: 8033724
 Conc: 23.16 ng/ml



#14 DINOSEB
 R.T.: 11.126 min
 Delta R.T.: 0.029 min
 Response: 14896680
 Conc: 2.31 ng/ml

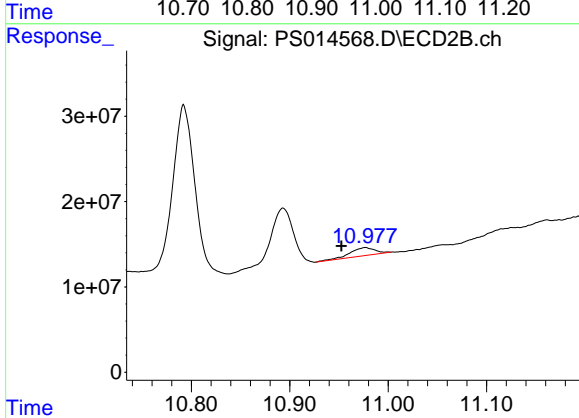


#14 DINOSEB
 R.T.: 9.981 min
 Delta R.T.: 0.010 min
 Response: 92605907
 Conc: 48.09 ng/ml

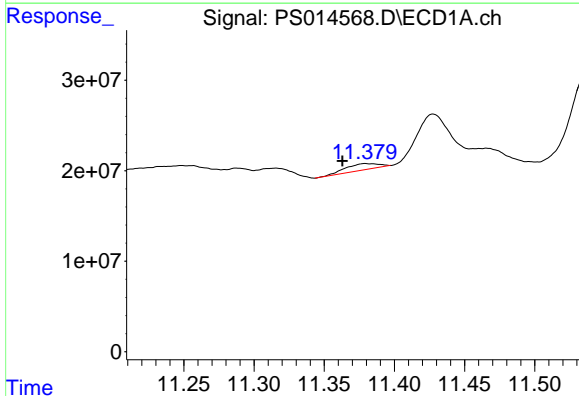


#15 Picloram
 R.T.: 10.975 min
 Delta R.T.: 0.056 min
 Response: 929531163
 Conc: 83.08 ng/ml

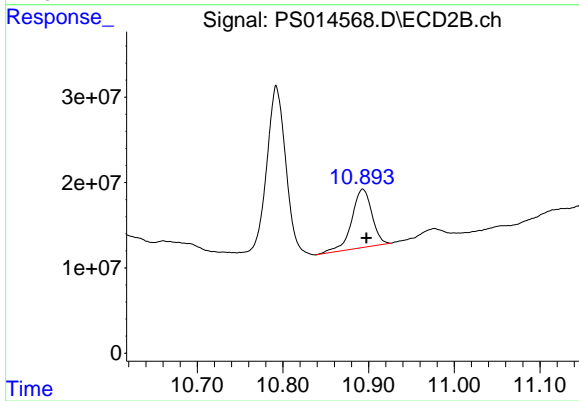
Instrument :
 ECD_S
 ClientSampleId :



#15 Picloram
 R.T.: 10.977 min
 Delta R.T.: 0.024 min
 Response: 16954356
 Conc: 4.52 ng/ml



#16 DCPA
 R.T.: 11.381 min
 Delta R.T.: 0.018 min
 Response: 11377110
 Conc: N.D.



#16 DCPA
 R.T.: 10.893 min
 Delta R.T.: -0.004 min
 Response: 112068568
 Conc: 27.60 ng/ml