

Data Path : Z:\pestpcbsrv\HPCHEM1\ECD\_S\Data\PS041221\  
 Data File : PS014554.D  
 Signal(s) : Signal #1: ECD1A.ch Signal #2: ECD2B.ch  
 Acq On : 12 Apr 2021 13:53  
 Operator : DD\AJ  
 Sample : PB135657BL  
 Misc :  
 ALS Vial : 4 Sample Multiplier: 1

Instrument :  
 ECD\_S  
 ClientSampleId :  
 PB135657BL

Integration File signal 1: autoint1.e  
 Integration File signal 2: autoint2.e  
 Quant Time: Apr 12 15:21:18 2021  
 Quant Method : Z:\pestpcbsrv\HPCHEM1\ECD\_S\Method\PS040821.M  
 Quant Title : 8080.M  
 QLast Update : Thu Apr 08 14:34:06 2021  
 Response via : Initial Calibration  
 Integrator: ChemStation

Volume Inj. : 2 µl  
 Signal #1 Phase : Rtx-CLPesticides Signal #2 Phase: Rtx-CLPesticides2  
 Signal #1 Info : 30M x 0.32mm x0.5 Signal #2 Info : 30M x 0.32mm x 0.25µm

Compound	RT#1	RT#2	Resp#1	Resp#2	ng/ml	ng/ml
-----						
System Monitoring Compounds						
4) S 2,4-DCAA	7.158	6.882	780.0E6	290.4E6	512.736	623.907

Target Compounds  
 -----

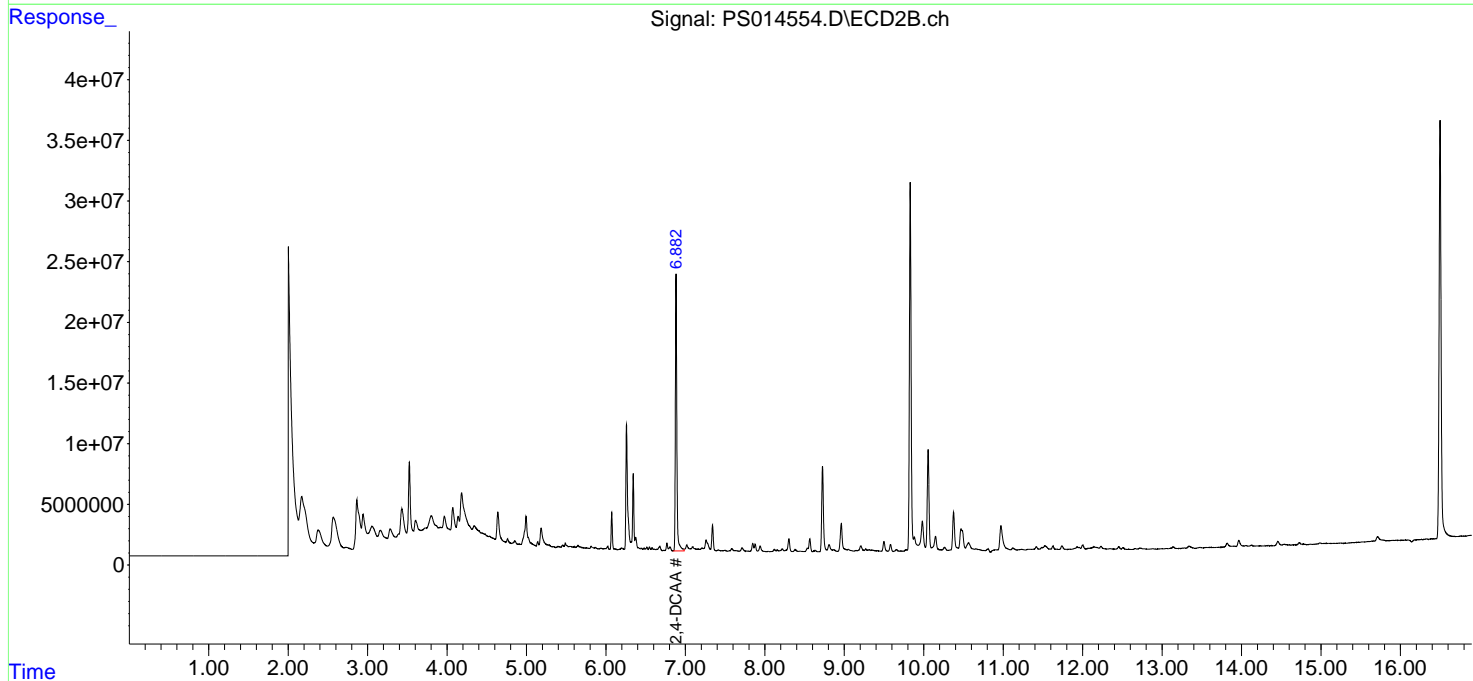
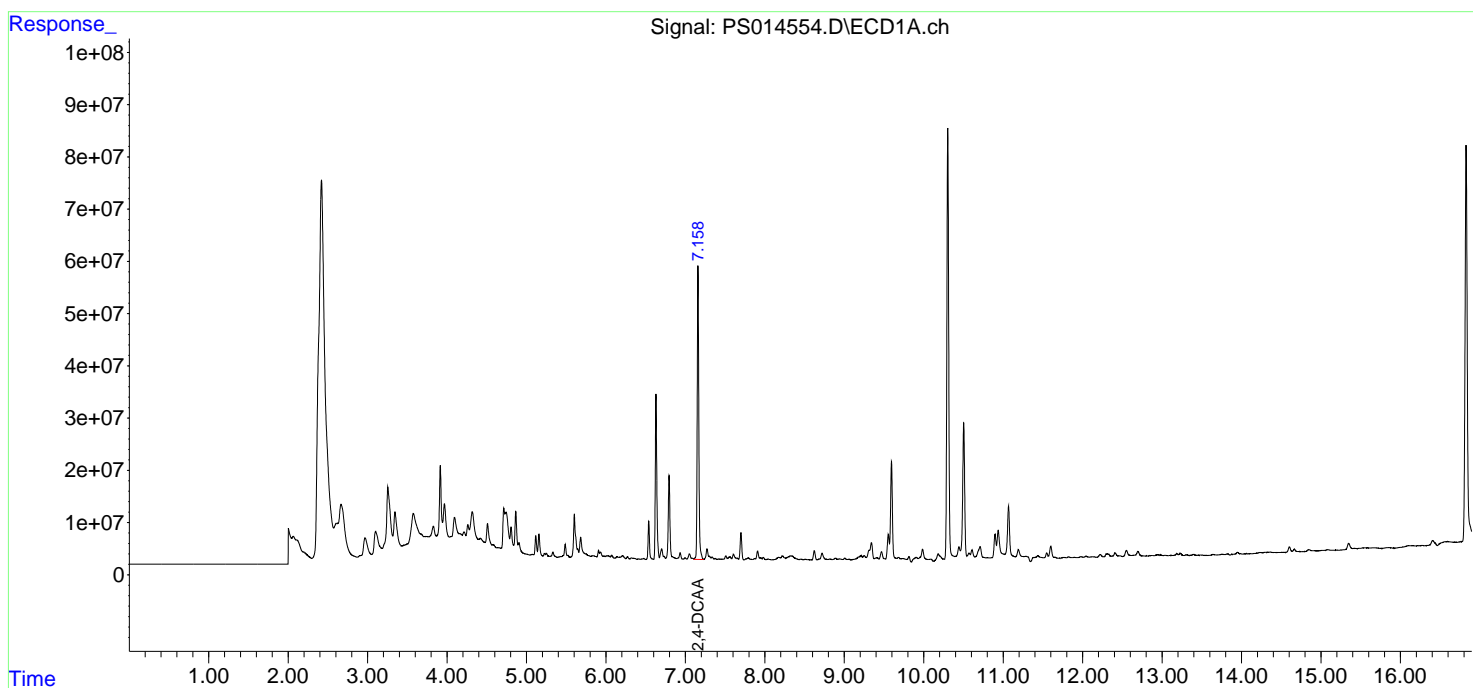
(f)=RT Delta > 1/2 Window (#)=Amounts differ by > 25% (m)=manual int.

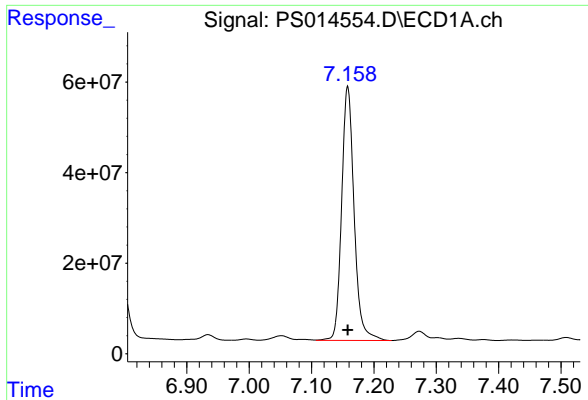
Data Path : Z:\pestpcbsrv\HPCHEM1\ECD\_S\Data\PS041221\  
 Data File : PS014554.D  
 Signal(s) : Signal #1: ECD1A.ch Signal #2: ECD2B.ch  
 Acq On : 12 Apr 2021 13:53  
 Operator : DD\AJ  
 Sample : PB135657BL  
 Misc :  
 ALS Vial : 4 Sample Multiplier: 1

Instrument :  
 ECD\_S  
 ClientSampleID :  
 PB135657BL

Integration File signal 1: autoint1.e  
 Integration File signal 2: autoint2.e  
 Quant Time: Apr 12 15:21:18 2021  
 Quant Method : Z:\pestpcbsrv\HPCHEM1\ECD\_S\Method\PS040821.M  
 Quant Title : 8080.M  
 QLast Update : Thu Apr 08 14:34:06 2021  
 Response via : Initial Calibration  
 Integrator: ChemStation

Volume Inj. : 2 µl  
 Signal #1 Phase : Rtx-CLPesticides Signal #2 Phase: Rtx-CLPesticides2  
 Signal #1 Info : 30M x 0.32mm x0.5 Signal #2 Info : 30M x 0.32mm x 0.25µm

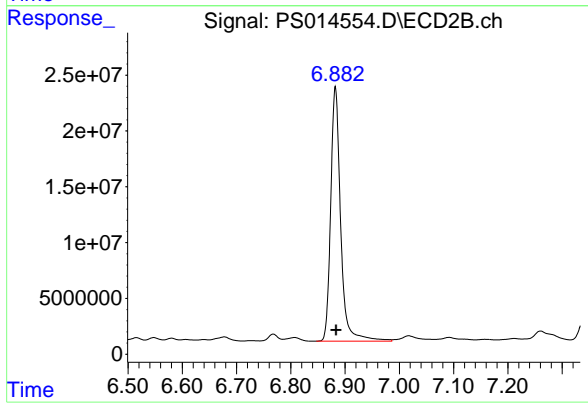




#4 2,4-DCAA

R.T.: 7.158 min  
Delta R.T.: 0.000 min  
Response: 779971523  
Conc: 512.74 ng/ml

Instrument :  
ECD\_S  
ClientSampleId :  
PB135657BL



#4 2,4-DCAA

R.T.: 6.882 min  
Delta R.T.: -0.001 min  
Response: 290400392  
Conc: 623.91 ng/ml