

Data Path : Z:\pestpcbsrv\HPCHEM1\ECD_S\Data\PS041223\
 Data File : PS022679.D
 Signal(s) : Signal #1: ECD1A.ch Signal #2: ECD2B.ch
 Acq On : 12 Apr 2023 19:12
 Operator : AR\AJ
 Sample : PB152064BSD
 Misc :
 ALS Vial : 13 Sample Multiplier: 1

Instrument :
 ECD_S
 ClientSampleId :
 PB152064BSD

Integration File signal 1: autoint1.e
 Integration File signal 2: autoint2.e
 Quant Time: Apr 12 22:07:17 2023
 Quant Method : Z:\pestpcbsrv\HPCHEM1\ECD_S\Method\PS041223.M
 Quant Title : 8080.M
 QLast Update : Wed Apr 12 14:05:56 2023
 Response via : Initial Calibration
 Integrator: ChemStation

Volume Inj. : 2 µl
 Signal #1 Phase : Rtx-CLPesticides Signal #2 Phase: Rtx-CLPesticides2
 Signal #1 Info : 30M x 0.32mm x0.5 Signal #2 Info : 30M x 0.32mm x 0.25µm

	Compound	RT#1	RT#2	Resp#1	Resp#2	ng/ml	ng/ml

System Monitoring Compounds							
4) S	2,4-DCAA	6.484	6.872	1136.5E6	459.7E6	456.495	451.122
Target Compounds							
1) T	Dalapon	2.546	2.575	1203.3E6	640.2E6	407.444	404.429
2) T	3,5-DICHL...	5.837	6.032	1439.5E6	657.1E6	425.999	421.375
3) T	4-Nitroph...	6.315	6.474	752.6E6	259.2E6	405.580	407.807
5) T	DICAMBA	6.633	7.040	4781.5E6	1967.0E6	435.399	427.224
6) T	MCP P	6.793	7.135	345.4E6	144.4E6	41.049	41.451
7) T	MCPA	6.922	7.346	492.1E6	202.8E6	41.454	41.949
8) T	DICHLORPROP	7.245	7.663	1306.6E6	470.6E6	429.568	422.560
9) T	2,4-D	7.446	7.952	1580.2E6	542.1E6	426.741	423.220
10) T	Pentachlo...	7.681	8.385	19134.7E6	7203.1E6	478.401	449.044
11) T	2,4,5-TP ...	8.217	8.746	8139.9E6	2713.2E6	444.109	435.117
12) T	2,4,5-T	8.476	9.122	8262.0E6	2563.8E6	441.783	433.357
13) T	2,4-DB	8.992	9.630	1779.5E6	317.8E6	416.440	424.134
14) T	DINOSEB	10.066	9.961	6125.5E6	1904.1E6	432.109	431.248
15) T	Picloram	9.884	10.931	12266.8E6	3296.9E6	411.831	405.341
16) T	DCPA	10.333	10.893	10083.3E6	3145.3E6	451.045	452.940

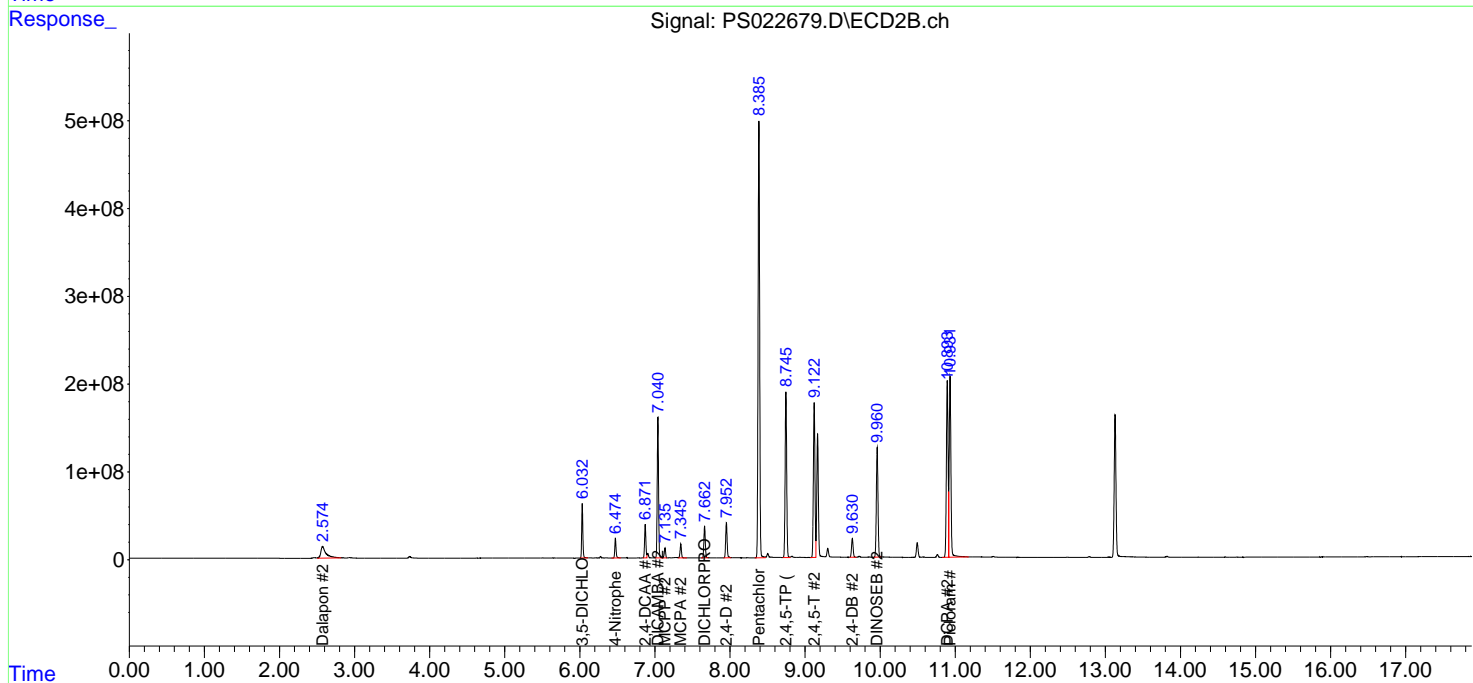
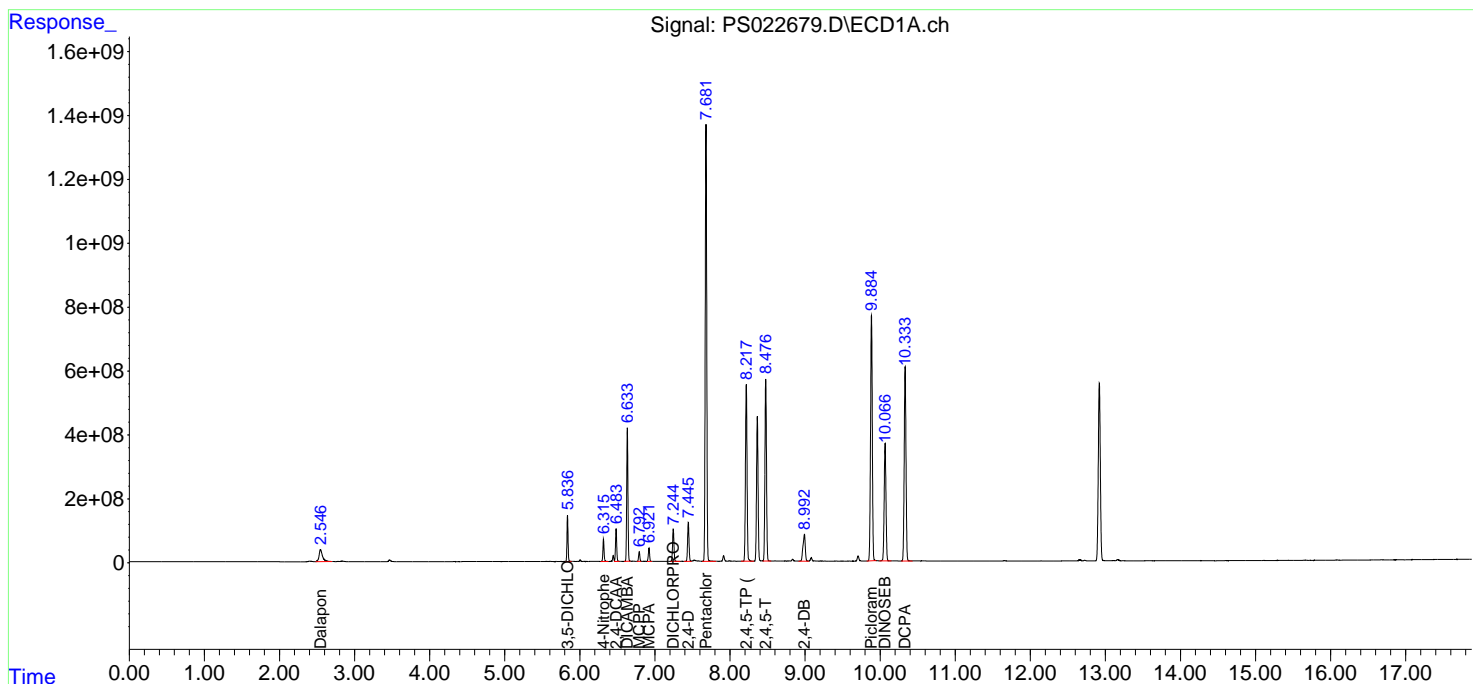
(f)=RT Delta > 1/2 Window (#)=Amounts differ by > 25% (m)=manual int.

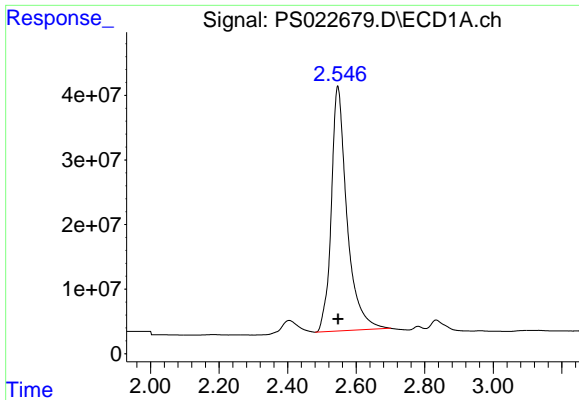
Data Path : Z:\pestpcbsrv\HPCHEM1\ECD_S\Data\PS041223\
 Data File : PS022679.D
 Signal(s) : Signal #1: ECD1A.ch Signal #2: ECD2B.ch
 Acq On : 12 Apr 2023 19:12
 Operator : AR\AJ
 Sample : PB152064BSD
 Misc :
 ALS Vial : 13 Sample Multiplier: 1

Instrument :
 ECD_S
 ClientSampleId :
 PB152064BSD

Integration File signal 1: autoint1.e
 Integration File signal 2: autoint2.e
 Quant Time: Apr 12 22:07:17 2023
 Quant Method : Z:\pestpcbsrv\HPCHEM1\ECD_S\Method\PS041223.M
 Quant Title : 8080.M
 QLast Update : Wed Apr 12 14:05:56 2023
 Response via : Initial Calibration
 Integrator: ChemStation

Volume Inj. : 2 µl
 Signal #1 Phase : Rtx-CLPesticides Signal #2 Phase: Rtx-CLPesticides2
 Signal #1 Info : 30M x 0.32mm x0.5 Signal #2 Info : 30M x 0.32mm x 0.25µm

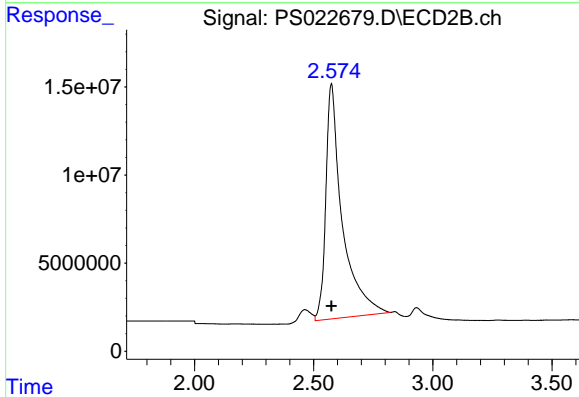




#1 Dalapon

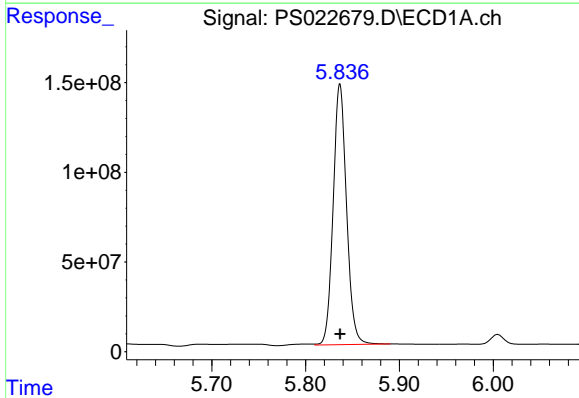
R.T.: 2.546 min
Delta R.T.: 0.000 min
Response: 1203325750
Conc: 407.44 ng/ml

Instrument :
ECD_S
ClientSampleId :
PB152064BSD



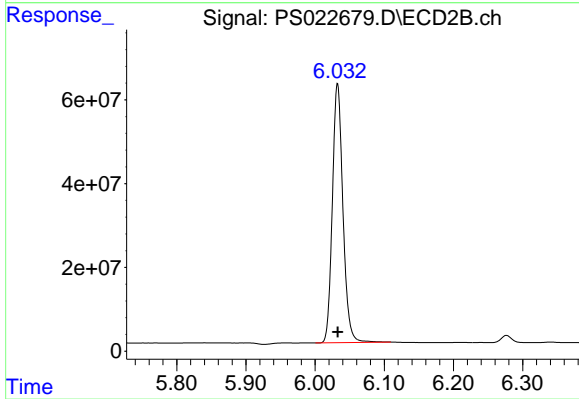
#1 Dalapon

R.T.: 2.575 min
Delta R.T.: 0.000 min
Response: 640227323
Conc: 404.43 ng/ml



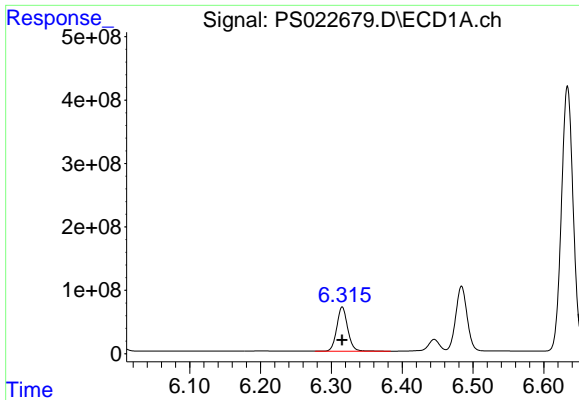
#2 3,5-DICHLOROBENZOIC ACID

R.T.: 5.837 min
Delta R.T.: 0.000 min
Response: 1439474432
Conc: 426.00 ng/ml



#2 3,5-DICHLOROBENZOIC ACID

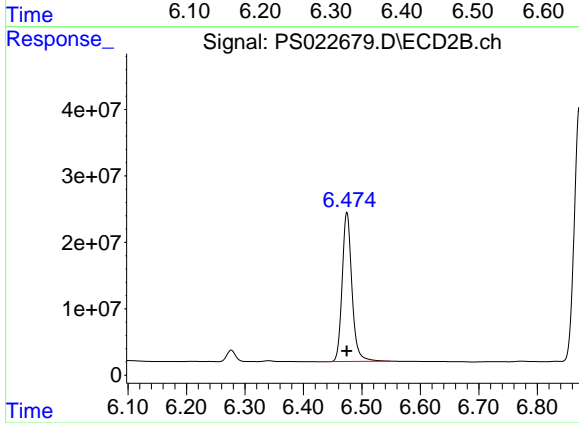
R.T.: 6.032 min
Delta R.T.: 0.000 min
Response: 657083425
Conc: 421.38 ng/ml



#3 4-Nitrophenol

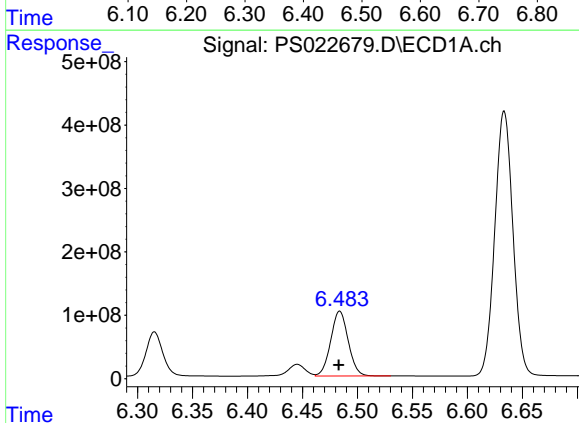
R.T.: 6.315 min
Delta R.T.: 0.000 min
Response: 752580750
Conc: 405.58 ng/ml

Instrument :
ECD_S
ClientSampleId :
PB152064BSD



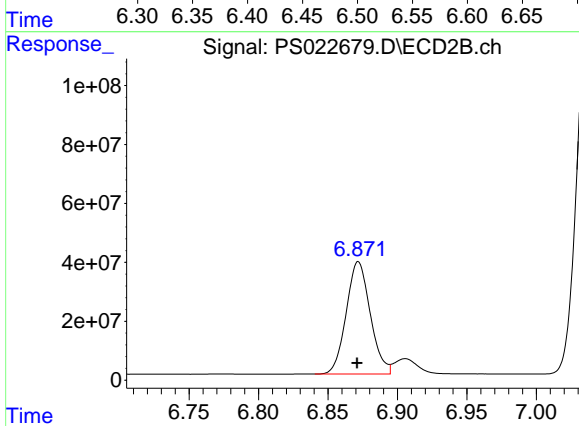
#3 4-Nitrophenol

R.T.: 6.474 min
Delta R.T.: 0.000 min
Response: 259247755
Conc: 407.81 ng/ml



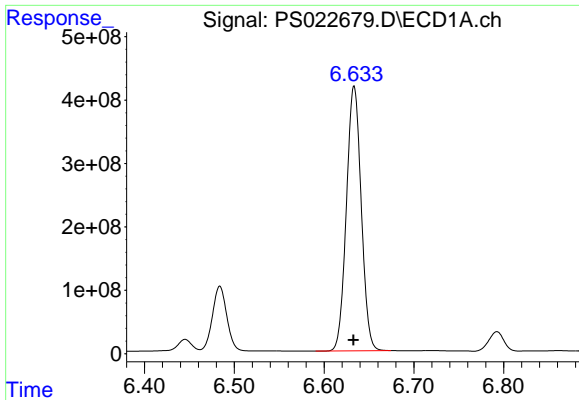
#4 2,4-DCAA

R.T.: 6.484 min
Delta R.T.: 0.000 min
Response: 1136536864
Conc: 456.49 ng/ml



#4 2,4-DCAA

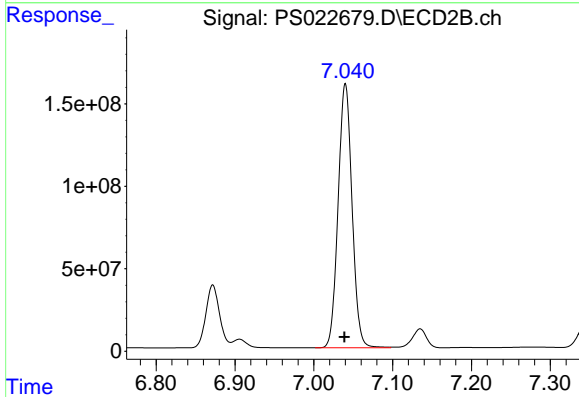
R.T.: 6.872 min
Delta R.T.: 0.000 min
Response: 459669048
Conc: 451.12 ng/ml



#5 DICAMBA

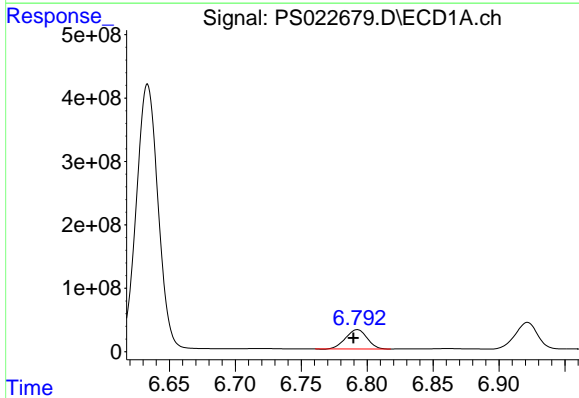
R.T.: 6.633 min
 Delta R.T.: 0.000 min
 Response: 4781487943
 Conc: 435.40 ng/ml

Instrument :
 ECD_S
 ClientSampleId :
 PB152064BSD



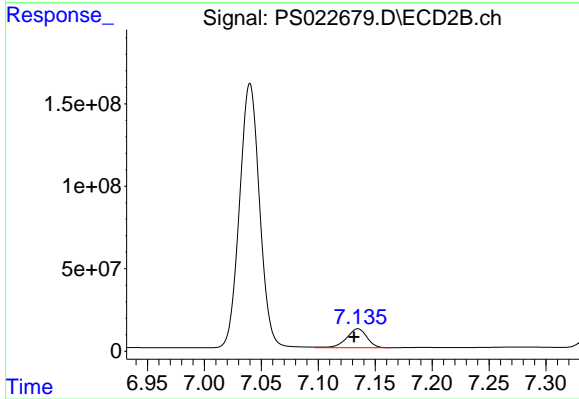
#5 DICAMBA

R.T.: 7.040 min
 Delta R.T.: 0.001 min
 Response: 1967017082
 Conc: 427.22 ng/ml



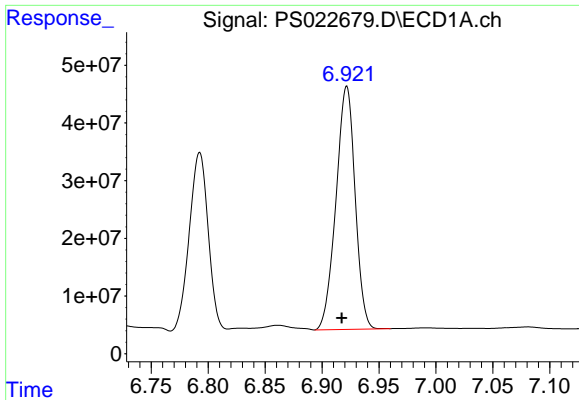
#6 MCPP

R.T.: 6.793 min
 Delta R.T.: 0.003 min
 Response: 345412400
 Conc: 41.05 ug/ml



#6 MCPP

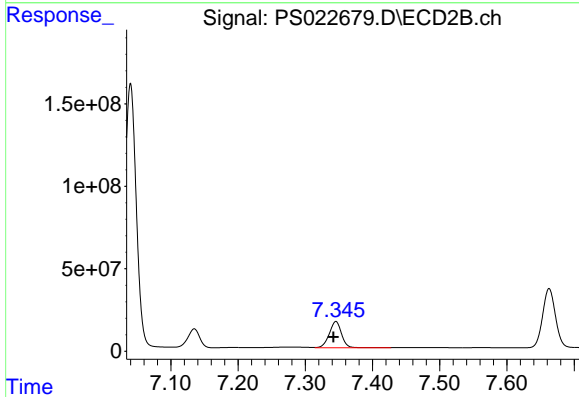
R.T.: 7.135 min
 Delta R.T.: 0.003 min
 Response: 144352815
 Conc: 41.45 ug/ml



#7 MCPA

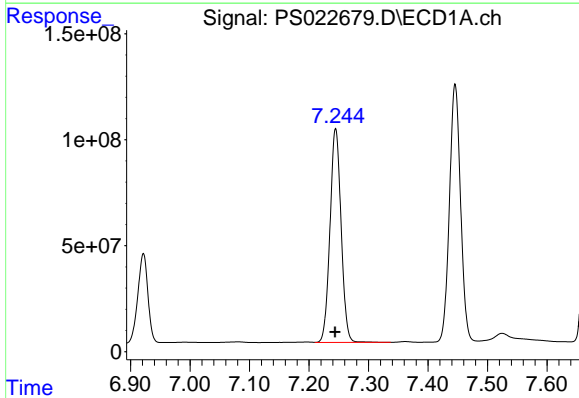
R.T.: 6.922 min
 Delta R.T.: 0.004 min
 Response: 492097936
 Conc: 41.45 ug/ml

Instrument :
 ECD_S
 ClientSampleId :
 PB152064BSD



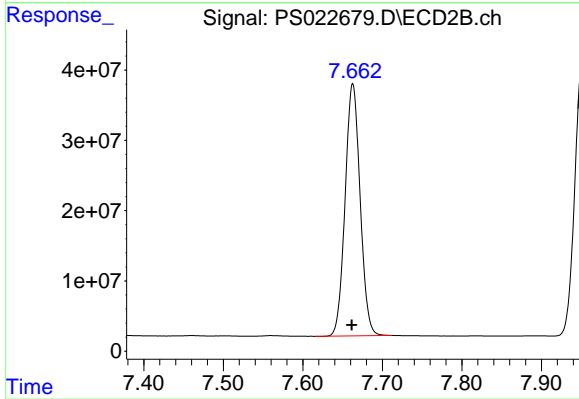
#7 MCPA

R.T.: 7.346 min
 Delta R.T.: 0.004 min
 Response: 202833280
 Conc: 41.95 ug/ml



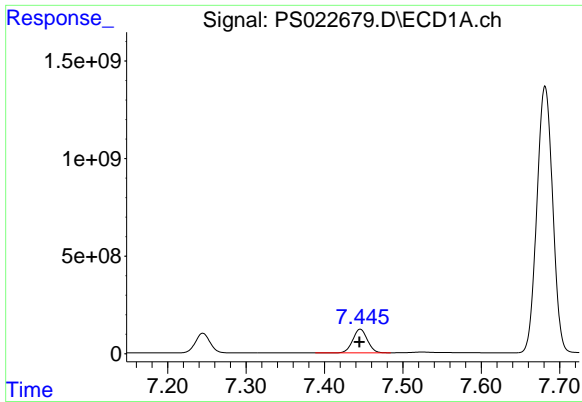
#8 DICHLORPROP

R.T.: 7.245 min
 Delta R.T.: 0.001 min
 Response: 1306599215
 Conc: 429.57 ng/ml



#8 DICHLORPROP

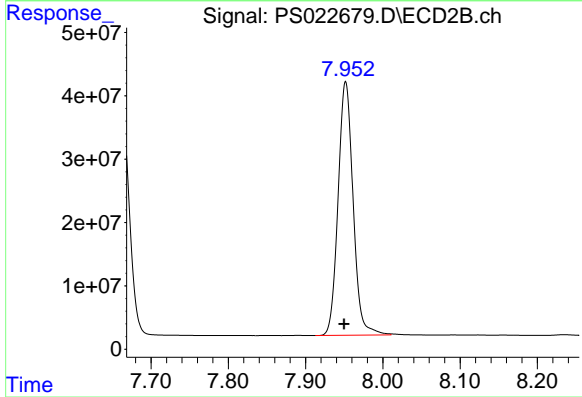
R.T.: 7.663 min
 Delta R.T.: 0.001 min
 Response: 470559477
 Conc: 422.56 ng/ml



#9 2,4-D

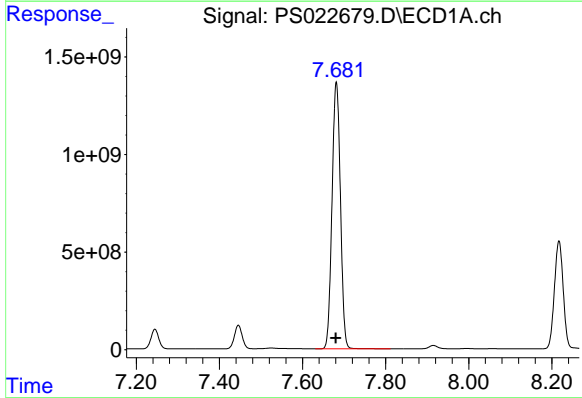
R.T.: 7.446 min
 Delta R.T.: 0.000 min
 Response: 1580213313
 Conc: 426.74 ng/ml

Instrument :
 ECD_S
 ClientSampleId :
 PB152064BSD



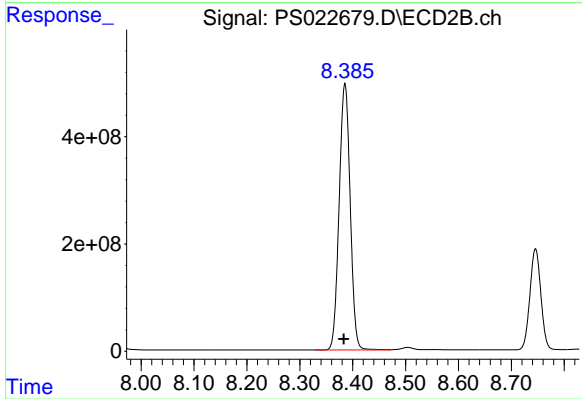
#9 2,4-D

R.T.: 7.952 min
 Delta R.T.: 0.002 min
 Response: 542053751
 Conc: 423.22 ng/ml



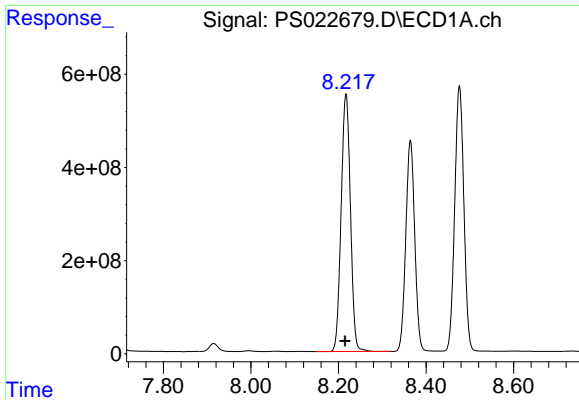
#10 Pentachlorophenol

R.T.: 7.681 min
 Delta R.T.: 0.001 min
 Response: 19134714895
 Conc: 478.40 ng/ml



#10 Pentachlorophenol

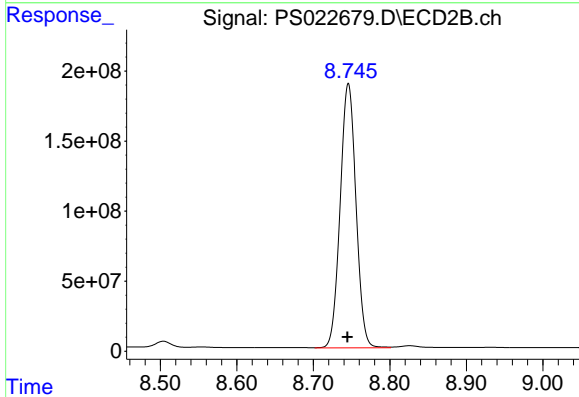
R.T.: 8.385 min
 Delta R.T.: 0.002 min
 Response: 7203090644
 Conc: 449.04 ng/ml



#11 2,4,5-TP (SILVEX)

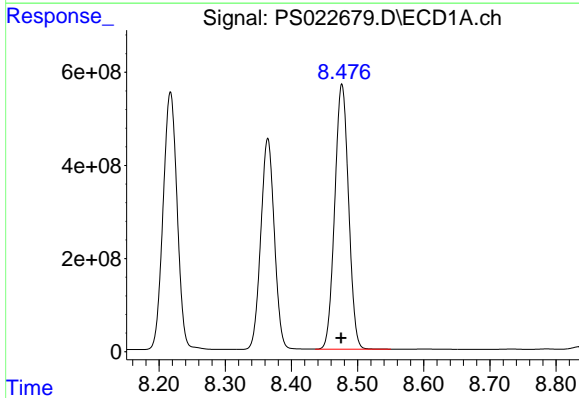
R.T.: 8.217 min
 Delta R.T.: 0.002 min
 Response: 8139914654
 Conc: 444.11 ng/ml

Instrument :
 ECD_S
 ClientSampleId :
 PB152064BSD



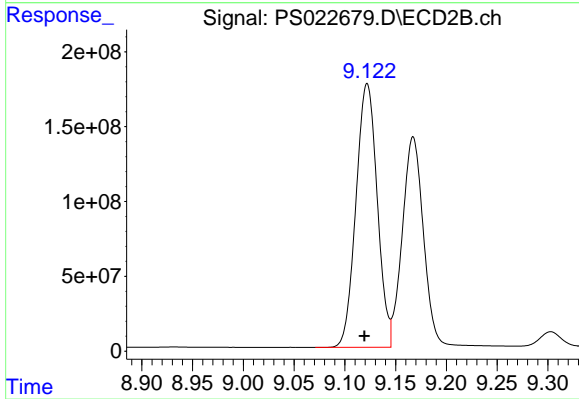
#11 2,4,5-TP (SILVEX)

R.T.: 8.746 min
 Delta R.T.: 0.001 min
 Response: 2713242523
 Conc: 435.12 ng/ml



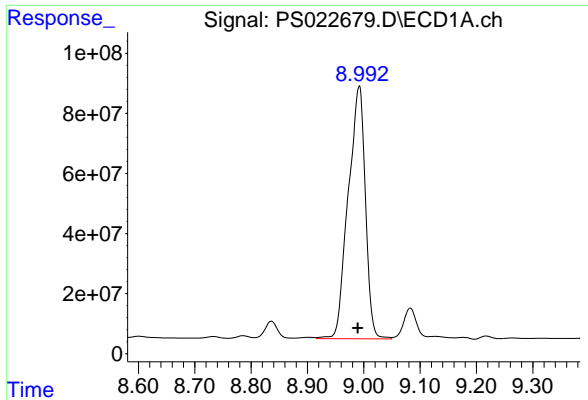
#12 2,4,5-T

R.T.: 8.476 min
 Delta R.T.: 0.000 min
 Response: 8261964556
 Conc: 441.78 ng/ml



#12 2,4,5-T

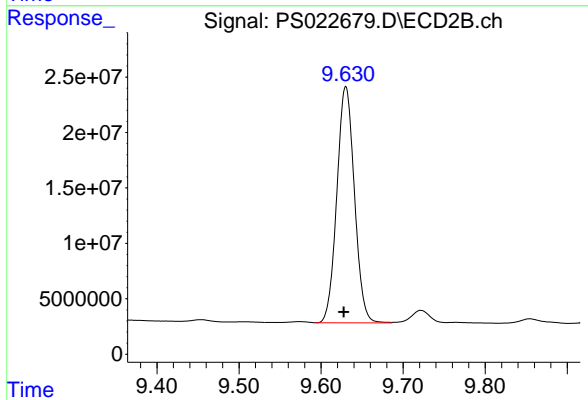
R.T.: 9.122 min
 Delta R.T.: 0.003 min
 Response: 2563831938
 Conc: 433.36 ng/ml



#13 2,4-DB

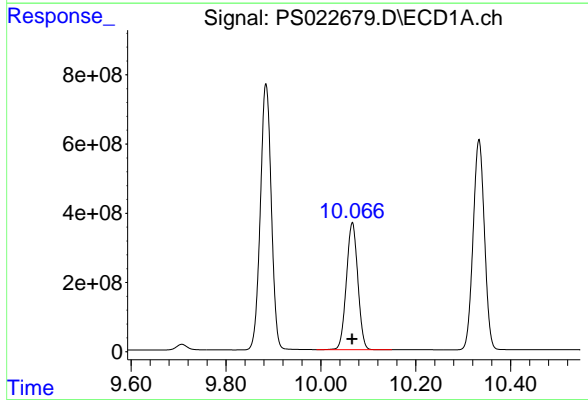
R.T.: 8.992 min
 Delta R.T.: 0.003 min
 Response: 1779504545
 Conc: 416.44 ng/ml

Instrument :
 ECD_S
 ClientSampleId :
 PB152064BSD



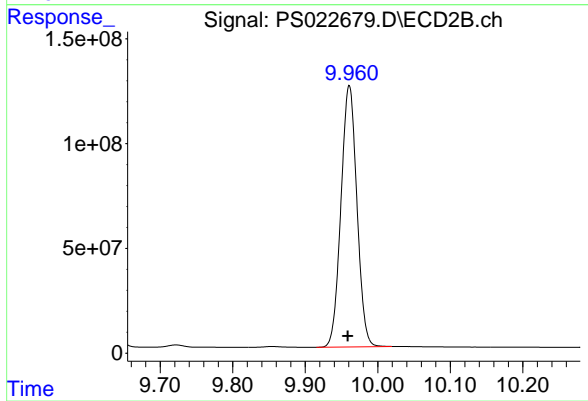
#13 2,4-DB

R.T.: 9.630 min
 Delta R.T.: 0.002 min
 Response: 317784263
 Conc: 424.13 ng/ml



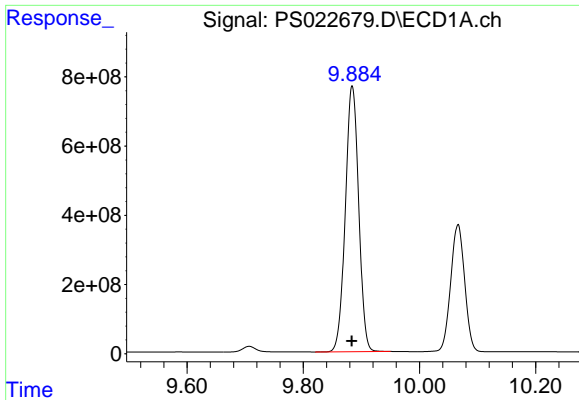
#14 DINOSEB

R.T.: 10.066 min
 Delta R.T.: 0.001 min
 Response: 6125468148
 Conc: 432.11 ng/ml



#14 DINOSEB

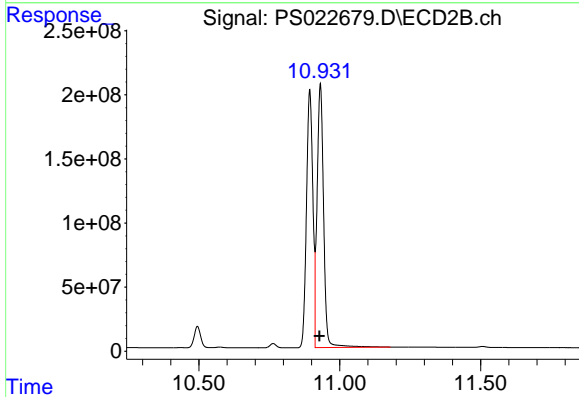
R.T.: 9.961 min
 Delta R.T.: 0.002 min
 Response: 1904097522
 Conc: 431.25 ng/ml



#15 Picloram

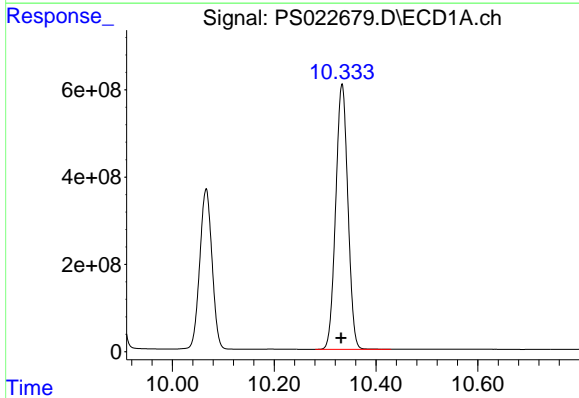
R.T.: 9.884 min
 Delta R.T.: 0.000 min
 Response: 12266803696
 Conc: 411.83 ng/ml

Instrument :
 ECD_S
 ClientSampleId :
 PB152064BSD



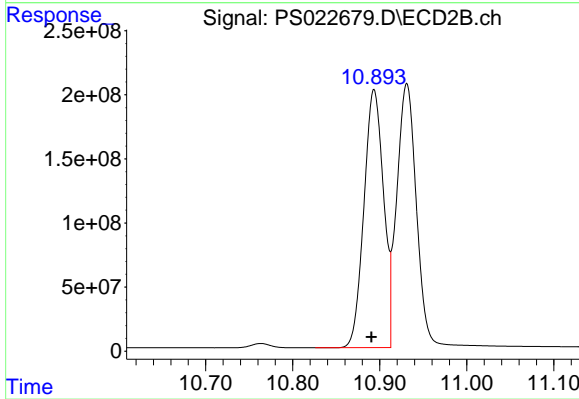
#15 Picloram

R.T.: 10.931 min
 Delta R.T.: 0.003 min
 Response: 3296917998
 Conc: 405.34 ng/ml



#16 DCPA

R.T.: 10.333 min
 Delta R.T.: 0.002 min
 Response: 10083319530
 Conc: 451.05 ng/ml



#16 DCPA

R.T.: 10.893 min
 Delta R.T.: 0.003 min
 Response: 3145333639
 Conc: 452.94 ng/ml