

Data Path : Z:\pestpcbsrv\HPCHEM1\ECD_S\Data\PS041321\
 Data File : PS014616.D
 Signal(s) : Signal #1: ECD1A.ch Signal #2: ECD2B.ch
 Acq On : 13 Apr 2021 21:08
 Operator : DD\AJ
 Sample : PB135667BS
 Misc :
 ALS Vial : 28 Sample Multiplier: 1

Instrument :
 ECD_S
ClientSampleId :
 PB135667BS

Manual Integrations
APPROVED
 Ankita
 4/14/2021 12:01:11 PM

Integration File signal 1: autoint1.e
 Integration File signal 2: autoint2.e
 Quant Time: Apr 14 06:38:41 2021
 Quant Method : Z:\pestpcbsrv\HPCHEM1\ECD_S\Method\PS040821.M
 Quant Title : 8080.M
 QLast Update : Thu Apr 08 14:34:06 2021
 Response via : Initial Calibration
 Integrator: ChemStation

Volume Inj. : 2 µl
 Signal #1 Phase : Rtx-CLPesticides Signal #2 Phase: Rtx-CLPesticides2
 Signal #1 Info : 30M x 0.32mm x0.5 Signal #2 Info : 30M x 0.32mm x 0.25µm

	Compound	RT#1	RT#2	Resp#1	Resp#2	ng/ml	ng/ml

System Monitoring Compounds							
4) S	2,4-DCAA	7.157	6.883	968.1E6	316.6E6	636.388	680.294
Target Compounds							
1) T	Dalapon	3.003	2.599	991.7E6	458.3E6	549.963m	704.233 #
2) T	3,5-DICHL...	6.383	6.045	1237.0E6	413.6E6	597.022	564.029
3) T	4-Nitroph...	6.991	6.498	442.8E6	153.6E6	544.884	544.129
5) T	DICAMBA	7.345	7.049	3298.6E6	1181.3E6	566.925m	584.086
6) T	MCP P	7.512	7.144	273.6E6	98501989	62.842	58.491
7) T	MCPA	7.660	7.359	334.4E6	161.8E6	53.734	66.638
8) T	DICHLORPROP	8.031	7.674	845.3E6	317.8E6	604.083	629.558
9) T	2,4-D	8.260	7.969	1054.4E6	413.9E6	663.169	744.325
10) T	Pentachlo...	8.566	8.394	12688.5E6	4209.2E6	603.734	626.131
11) T	2,4,5-TP ...	9.111	8.754	5210.0E6	1779.1E6	636.425	651.295
12) T	2,4,5-T	9.394	9.135	4891.1E6	1628.0E6	594.589	622.423
13) T	2,4-DB	9.944	9.640	585.5E6	207.2E6	384.742m	597.470 #
14) T	DINOSEB	11.096	9.970	3275.8E6	1052.1E6	508.375	546.362
15) T	Picloram	10.919	10.954	5697.7E6	1914.0E6	509.256	510.426
16) T	DCPA	11.362	10.896	5653.2E6	2133.6E6	458.787	525.420

(f)=RT Delta > 1/2 Window (#)=Amounts differ by > 25% (m)=manual int.

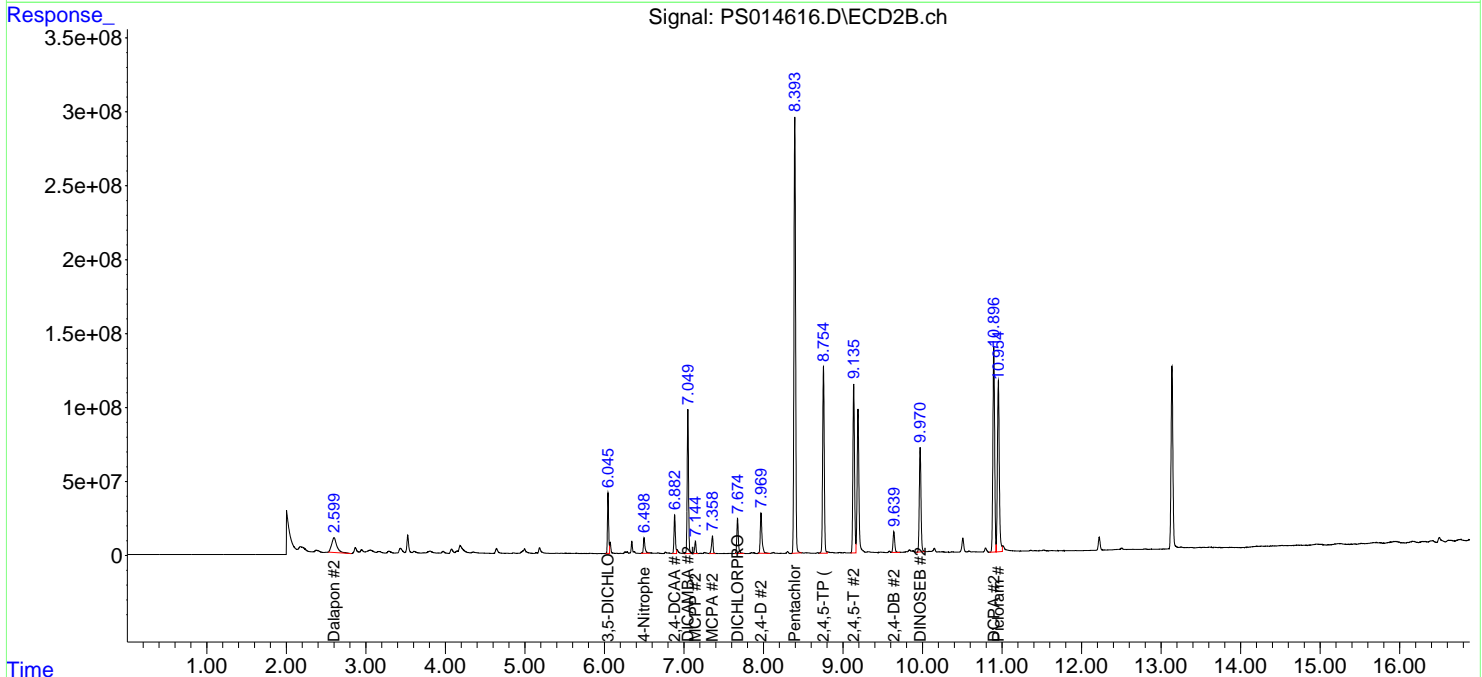
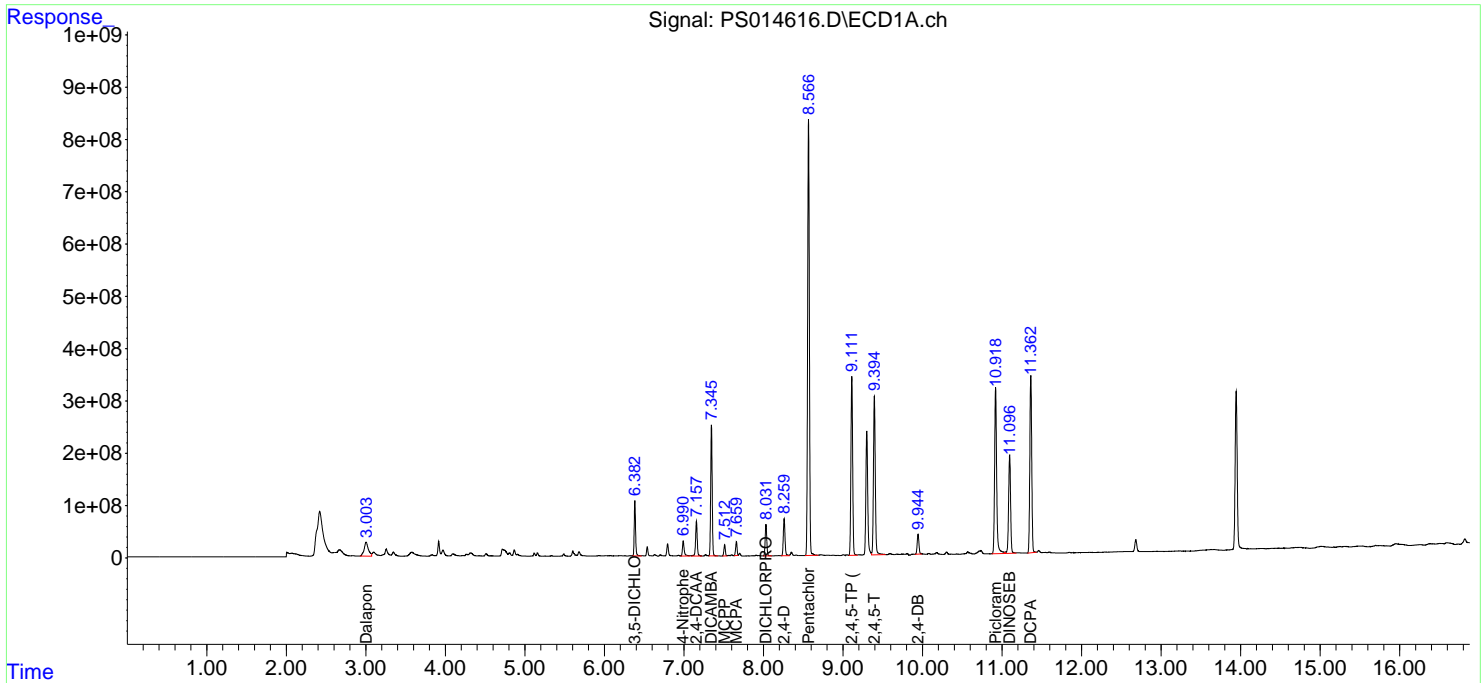
Data Path : Z:\pestpcbsrv\HPCHEM1\ECD_S\Data\PS041321\
 Data File : PS014616.D
 Signal(s) : Signal #1: ECD1A.ch Signal #2: ECD2B.ch
 Acq On : 13 Apr 2021 21:08
 Operator : DD\AJ
 Sample : PB135667BS
 Misc :
 ALS Vial : 28 Sample Multiplier: 1

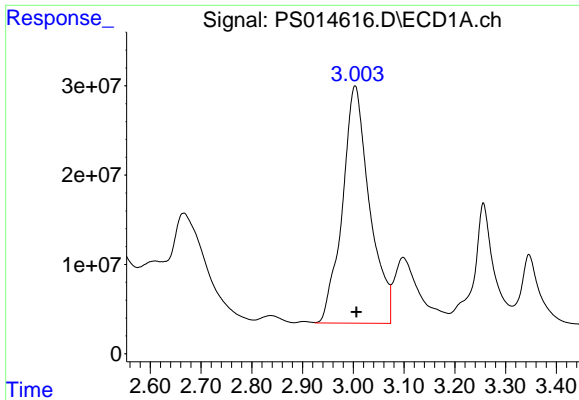
Instrument :
 ECD_S
 ClientSampled :
 PB135667BS

Manual Integrations
APPROVED
 Ankita
 4/14/2021 12:01:11 PM

Integration File signal 1: autoint1.e
 Integration File signal 2: autoint2.e
 Quant Time: Apr 14 06:38:41 2021
 Quant Method : Z:\pestpcbsrv\HPCHEM1\ECD_S\Method\PS040821.M
 Quant Title : 8080.M
 QLast Update : Thu Apr 08 14:34:06 2021
 Response via : Initial Calibration
 Integrator: ChemStation

Volume Inj. : 2 µl
 Signal #1 Phase : Rtx-CLPesticides Signal #2 Phase: Rtx-CLPesticides2
 Signal #1 Info : 30M x 0.32mm x0.5 Signal #2 Info : 30M x 0.32mm x 0.25µm





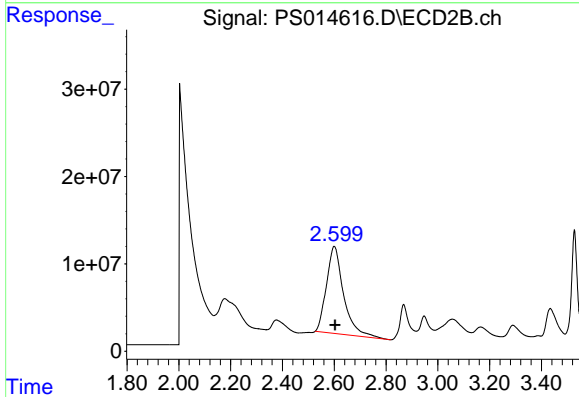
#1 Dalapon

R.T.: 3.003 min
 Delta R.T.: -0.003 min
 Response: 991677075
 Conc: 549.96 ng/ml m

Instrument :
 ECD_S
 ClientSampled :
 PB135667BS

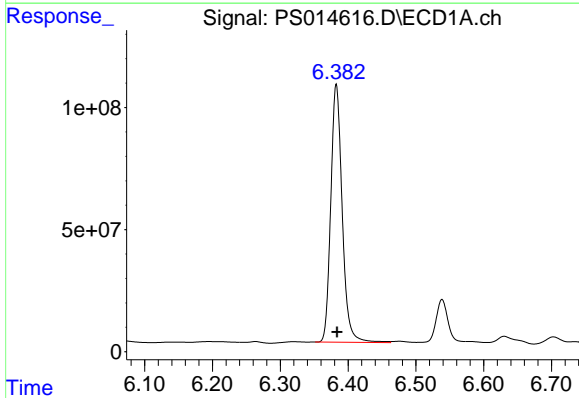
Manual Integrations
 APPROVED

Ankita
 4/14/2021 12:01:11 PM



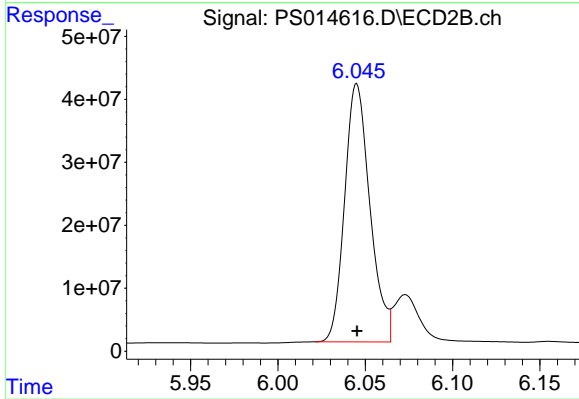
#1 Dalapon

R.T.: 2.599 min
 Delta R.T.: -0.003 min
 Response: 458332373
 Conc: 704.23 ng/ml



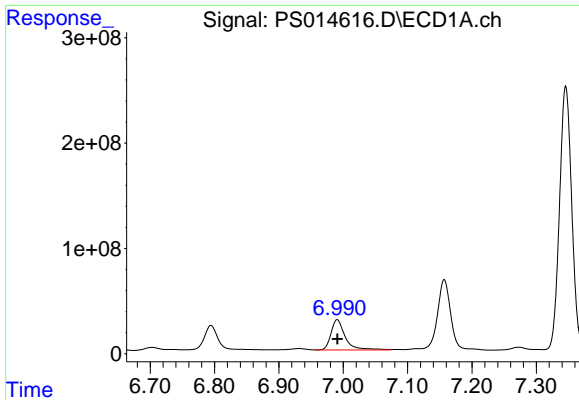
#2 3,5-DICHLOROBENZOIC ACID

R.T.: 6.383 min
 Delta R.T.: -0.001 min
 Response: 1237030685
 Conc: 597.02 ng/ml



#2 3,5-DICHLOROBENZOIC ACID

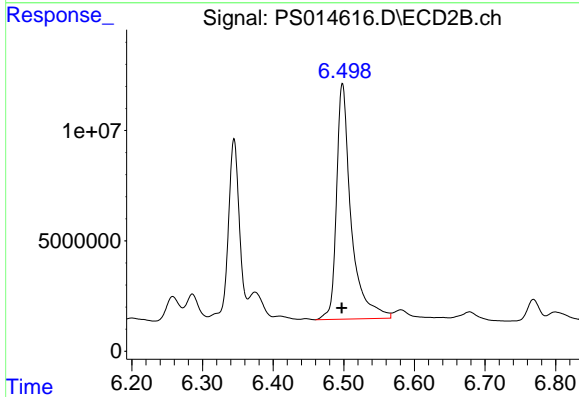
R.T.: 6.045 min
 Delta R.T.: 0.000 min
 Response: 413600704
 Conc: 564.03 ng/ml



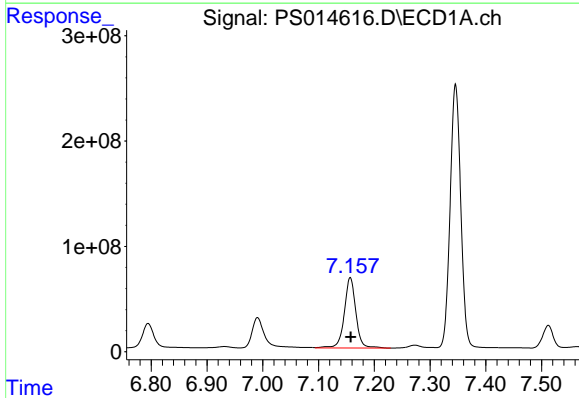
#3 4-Nitrophenol
 R.T.: 6.991 min
 Delta R.T.: 0.000 min
 Response: 442784981
 Conc: 544.88 ng/ml

Instrument :
 ECD_S
ClientSampled :
 PB135667BS

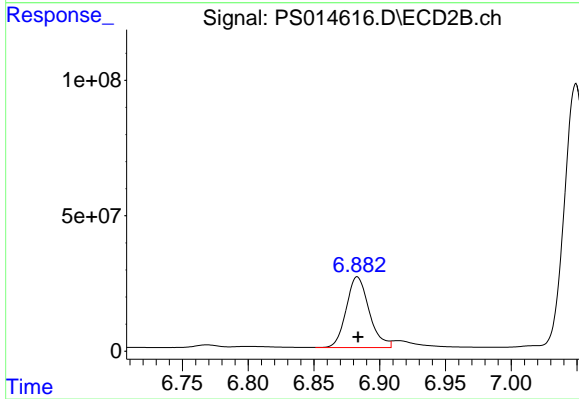
Manual Integrations
APPROVED
 Ankita
 4/14/2021 12:01:11 PM



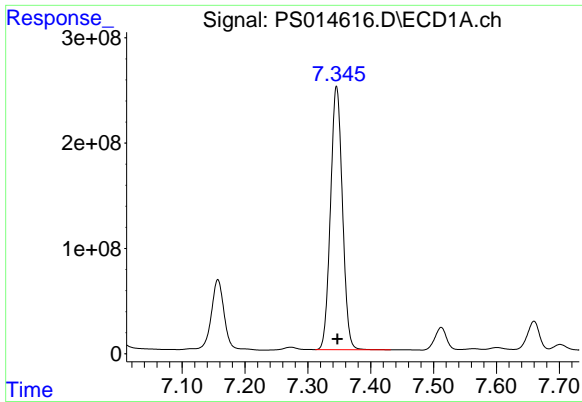
#3 4-Nitrophenol
 R.T.: 6.498 min
 Delta R.T.: 0.001 min
 Response: 153625483
 Conc: 544.13 ng/ml



#4 2,4-DCAA
 R.T.: 7.157 min
 Delta R.T.: 0.000 min
 Response: 968070640
 Conc: 636.39 ng/ml



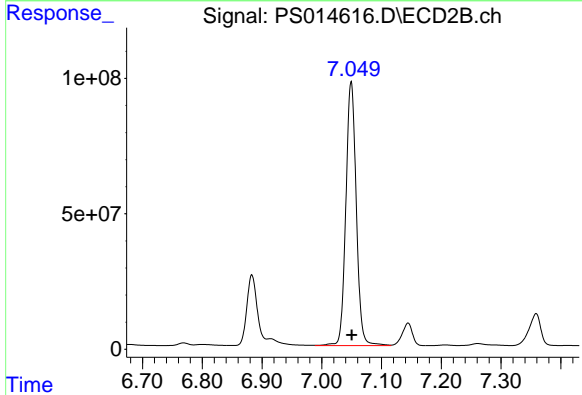
#4 2,4-DCAA
 R.T.: 6.883 min
 Delta R.T.: 0.000 min
 Response: 316646197
 Conc: 680.29 ng/ml



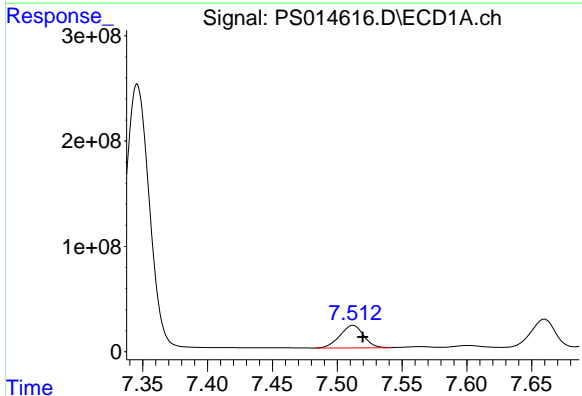
#5 DICAMBA
 R.T.: 7.345 min
 Delta R.T.: -0.002 min
 Response: 3298569585
 Conc: 566.92 ng/ml m

Instrument :
 ECD_S
 ClientSampled :
 PB135667BS

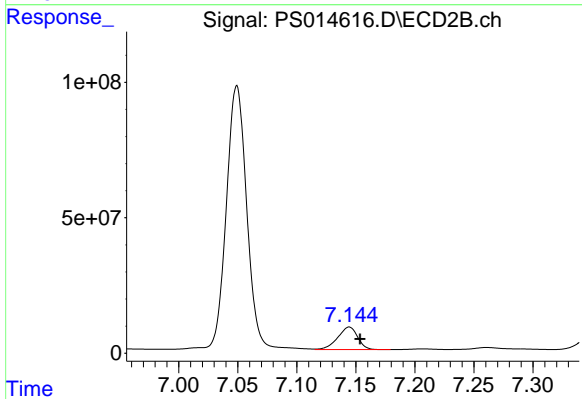
Manual Integrations
 APPROVED
 Ankita
 4/14/2021 12:01:11 PM



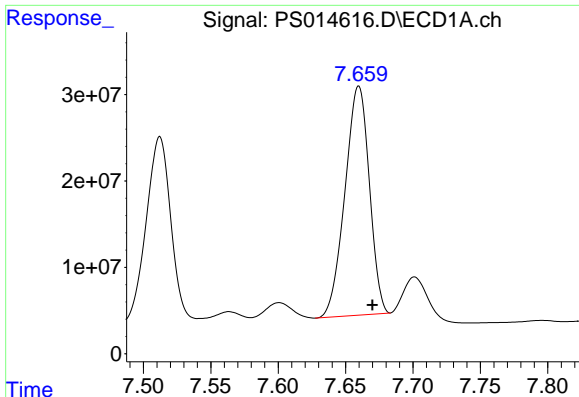
#5 DICAMBA
 R.T.: 7.049 min
 Delta R.T.: -0.001 min
 Response: 1181329131
 Conc: 584.09 ng/ml



#6 MCPP
 R.T.: 7.512 min
 Delta R.T.: -0.008 min
 Response: 273628735
 Conc: 62.84 ug/ml



#6 MCPP
 R.T.: 7.144 min
 Delta R.T.: -0.009 min
 Response: 98501989
 Conc: 58.49 ug/ml



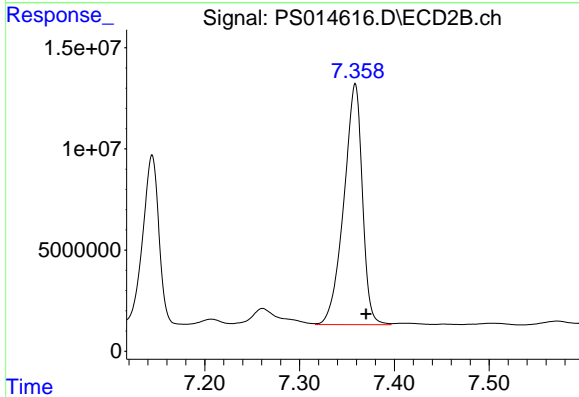
#7 MCPA

R.T.: 7.660 min
 Delta R.T.: -0.010 min
 Response: 334382844
 Conc: 53.73 ug/ml

Instrument :
 ECD_S
 ClientSampled :
 PB135667BS

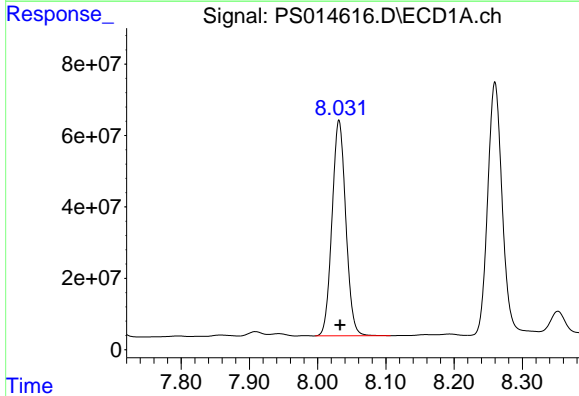
Manual Integrations
 APPROVED

Ankita
 4/14/2021 12:01:11 PM



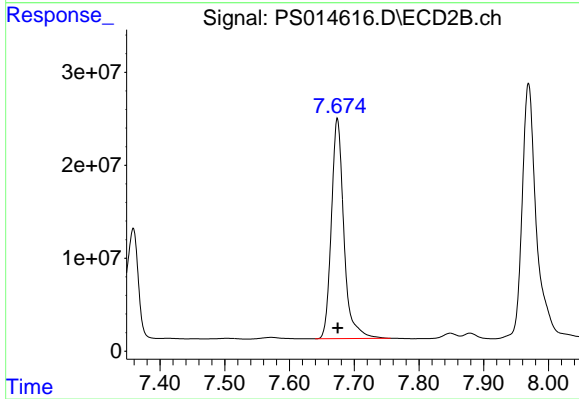
#7 MCPA

R.T.: 7.359 min
 Delta R.T.: -0.011 min
 Response: 161831117
 Conc: 66.64 ug/ml



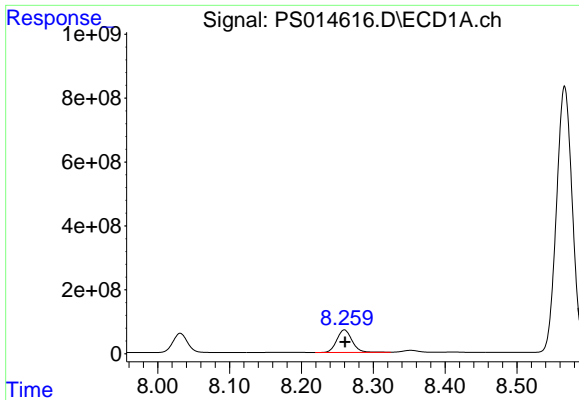
#8 DICHLORPROP

R.T.: 8.031 min
 Delta R.T.: -0.001 min
 Response: 845313097
 Conc: 604.08 ng/ml



#8 DICHLORPROP

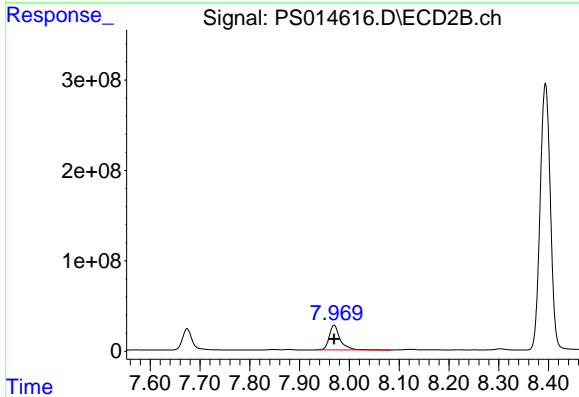
R.T.: 7.674 min
 Delta R.T.: 0.000 min
 Response: 317814271
 Conc: 629.56 ng/ml



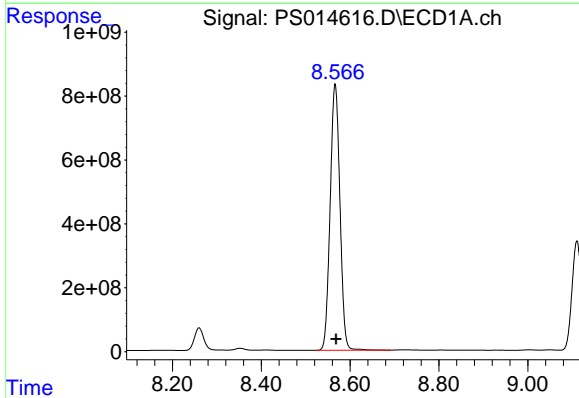
#9 2,4-D
 R.T.: 8.260 min
 Delta R.T.: 0.000 min
 Response: 1054428846
 Conc: 663.17 ng/ml

Instrument :
 ECD_S
ClientSampled :
 PB135667BS

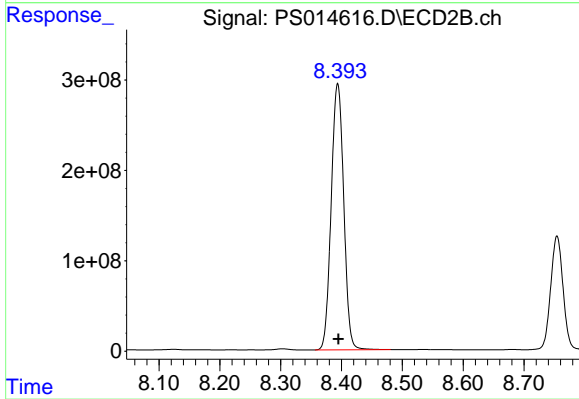
Manual Integrations
APPROVED
 Ankita
 4/14/2021 12:01:11 PM



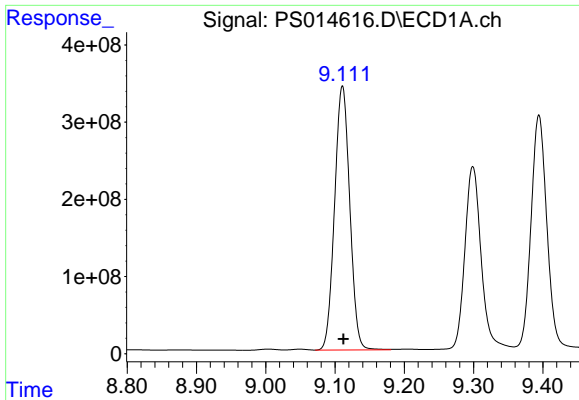
#9 2,4-D
 R.T.: 7.969 min
 Delta R.T.: 0.000 min
 Response: 413914802
 Conc: 744.32 ng/ml



#10 Pentachlorophenol
 R.T.: 8.566 min
 Delta R.T.: -0.002 min
 Response: 12688510108
 Conc: 603.73 ng/ml



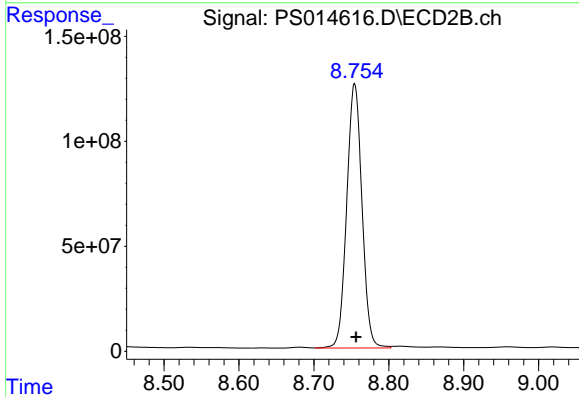
#10 Pentachlorophenol
 R.T.: 8.394 min
 Delta R.T.: 0.000 min
 Response: 4209191017
 Conc: 626.13 ng/ml



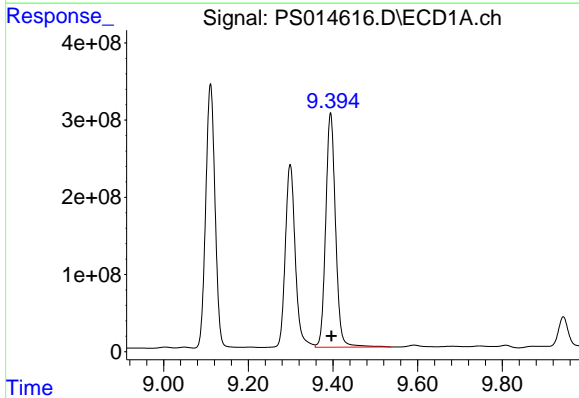
#11 2,4,5-TP (SILVEX)
 R.T.: 9.111 min
 Delta R.T.: -0.001 min
 Response: 5210043413
 Conc: 636.43 ng/ml

Instrument :
 ECD_S
ClientSampled :
 PB135667BS

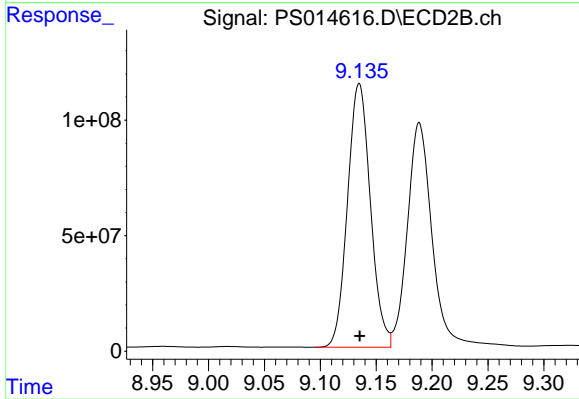
Manual Integrations
APPROVED
 Ankita
 4/14/2021 12:01:11 PM



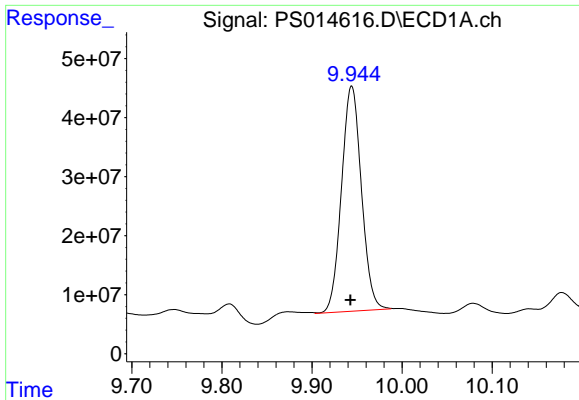
#11 2,4,5-TP (SILVEX)
 R.T.: 8.754 min
 Delta R.T.: -0.002 min
 Response: 1779121188
 Conc: 651.29 ng/ml



#12 2,4,5-T
 R.T.: 9.394 min
 Delta R.T.: -0.002 min
 Response: 4891145991
 Conc: 594.59 ng/ml



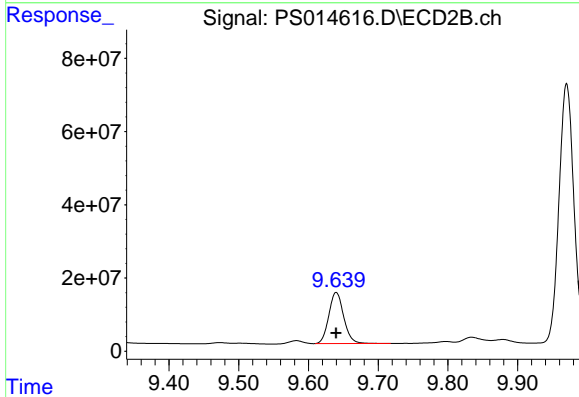
#12 2,4,5-T
 R.T.: 9.135 min
 Delta R.T.: 0.000 min
 Response: 1627974825
 Conc: 622.42 ng/ml



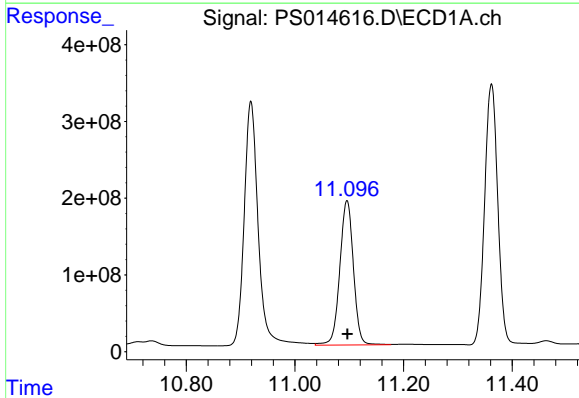
#13 2,4-DB
 R.T.: 9.944 min
 Delta R.T.: 0.000 min
 Response: 585483856
 Conc: 384.74 ng/ml m

Instrument :
 ECD_S
ClientSampled :
 PB135667BS

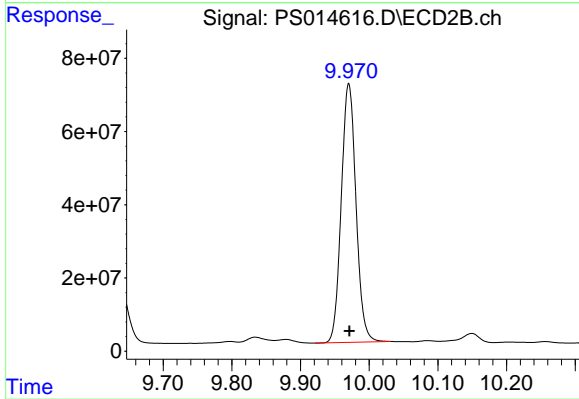
Manual Integrations
APPROVED
 Ankita
 4/14/2021 12:01:11 PM



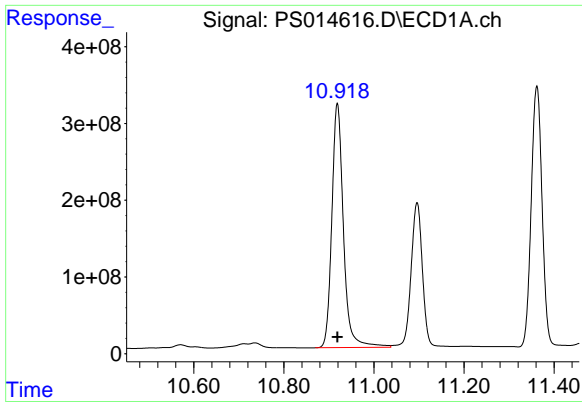
#13 2,4-DB
 R.T.: 9.640 min
 Delta R.T.: 0.000 min
 Response: 207245581
 Conc: 597.47 ng/ml



#14 DINOSEB
 R.T.: 11.096 min
 Delta R.T.: 0.000 min
 Response: 3275788847
 Conc: 508.37 ng/ml



#14 DINOSEB
 R.T.: 9.970 min
 Delta R.T.: 0.000 min
 Response: 1052116484
 Conc: 546.36 ng/ml



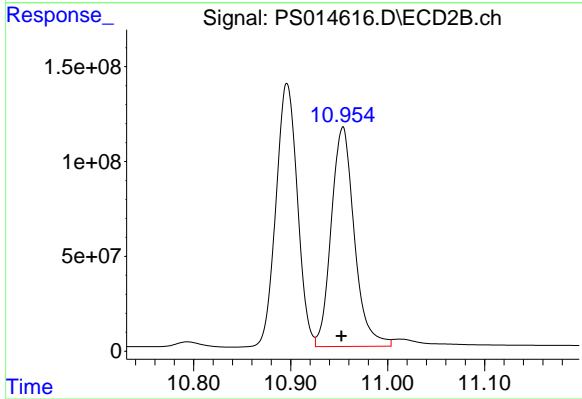
#15 Picloram

R.T.: 10.919 min
 Delta R.T.: 0.000 min
 Response: 5697713894
 Conc: 509.26 ng/ml

Instrument :
 ECD_S
 ClientSampled :
 PB135667BS

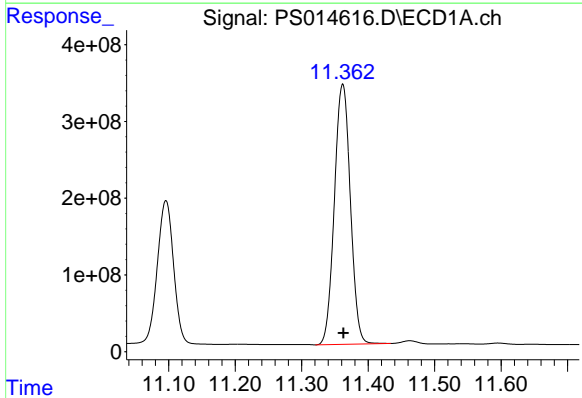
Manual Integrations
 APPROVED

Ankita
 4/14/2021 12:01:11 PM



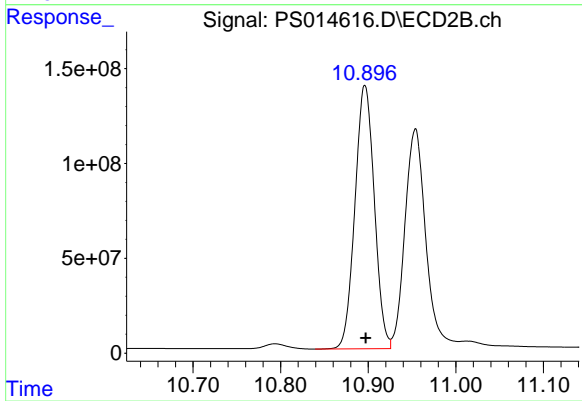
#15 Picloram

R.T.: 10.954 min
 Delta R.T.: 0.002 min
 Response: 1914048037
 Conc: 510.43 ng/ml



#16 DCPA

R.T.: 11.362 min
 Delta R.T.: -0.001 min
 Response: 5653185300
 Conc: 458.79 ng/ml



#16 DCPA

R.T.: 10.896 min
 Delta R.T.: -0.001 min
 Response: 2133561504
 Conc: 525.42 ng/ml