

Data Path : Z:\pestpcbsrv\HPCHEM1\ECD\_S\Data\PS041420\  
 Data File : PS009732.D  
 Signal(s) : Signal #1: ECD1A.ch Signal #2: ECD2B.ch  
 Acq On : 14 Apr 2020 13:04  
 Operator : DD\AJ  
 Sample : PB128138BL  
 Misc :  
 ALS Vial : 8 Sample Multiplier: 1

Instrument :  
 ECD\_S  
 ClientSampleId :

Integration File signal 1: autoint1.e  
 Integration File signal 2: autoint2.e  
 Quant Time: Apr 14 18:04:09 2020  
 Quant Method : Z:\pestpcbsrv\HPCHEM1\ECD\_S\Method\PS031120.M  
 Quant Title : 8080.M  
 QLast Update : Thu Mar 12 07:13:24 2020  
 Response via : Initial Calibration  
 Integrator: ChemStation

Volume Inj. : 2 µl  
 Signal #1 Phase : Rtx-CLPesticides Signal #2 Phase: Rtx-CLPesticides2  
 Signal #1 Info : 30M x 0.32mm x0.5 Signal #2 Info : 30M x 0.32mm x 0.25µm

Compound	RT#1	RT#2	Resp#1	Resp#2	ng/ml	ng/ml
-----						
System Monitoring Compounds						
4) S 2,4-DCAA	7.238	6.928	324.4E6	307.9E6	586.411	560.720
Target Compounds						
8) T DICHLORPROP	0.000	7.749	0	4038686	N.D.	7.279
-----						

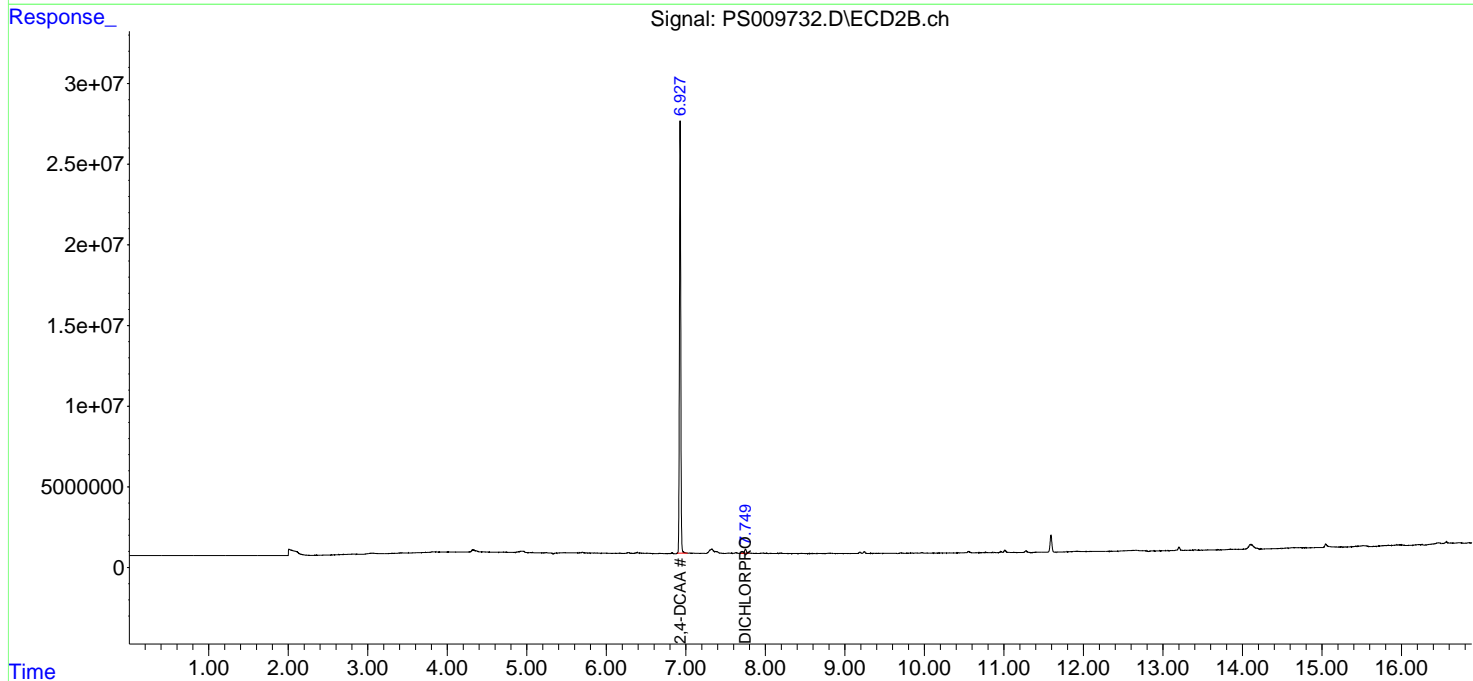
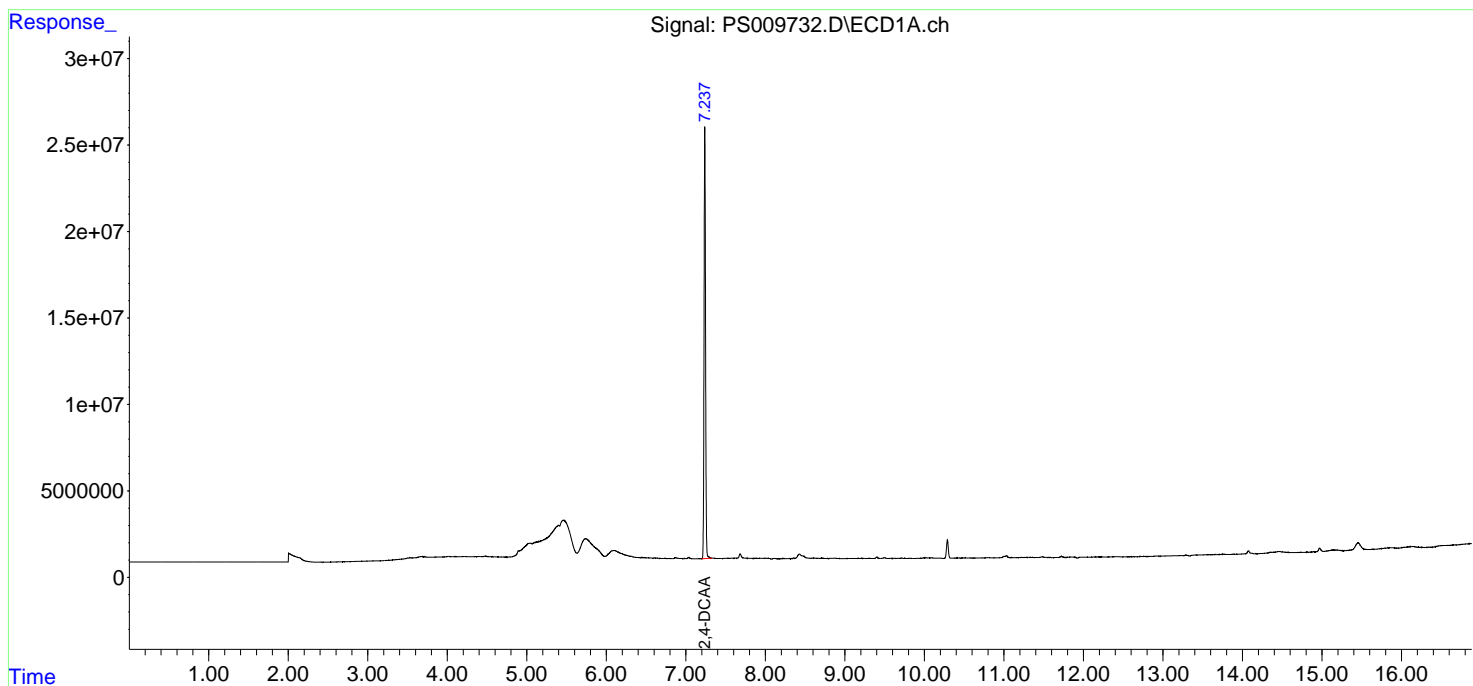
(f)=RT Delta > 1/2 Window (#)=Amounts differ by > 25% (m)=manual int.

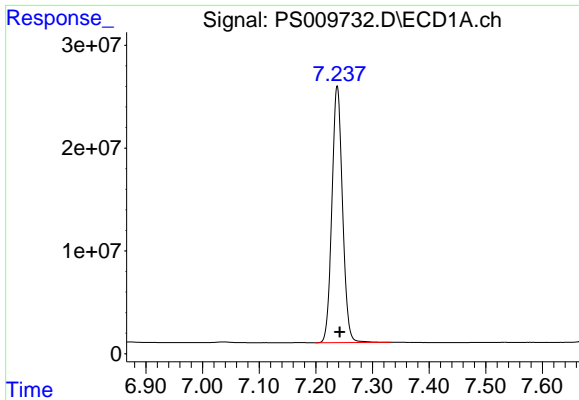
Data Path : Z:\pestpcbsrv\HPCHEM1\ECD\_S\Data\PS041420\  
 Data File : PS009732.D  
 Signal(s) : Signal #1: ECD1A.ch Signal #2: ECD2B.ch  
 Acq On : 14 Apr 2020 13:04  
 Operator : DD\AJ  
 Sample : PB128138BL  
 Misc :  
 ALS Vial : 8 Sample Multiplier: 1

Instrument :  
 ECD\_S  
 ClientSampleId :

Integration File signal 1: autoint1.e  
 Integration File signal 2: autoint2.e  
 Quant Time: Apr 14 18:04:09 2020  
 Quant Method : Z:\pestpcbsrv\HPCHEM1\ECD\_S\Method\PS031120.M  
 Quant Title : 8080.M  
 QLast Update : Thu Mar 12 07:13:24 2020  
 Response via : Initial Calibration  
 Integrator: ChemStation

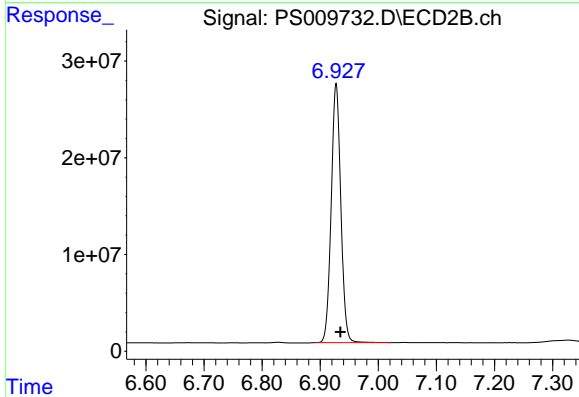
Volume Inj. : 2 µl  
 Signal #1 Phase : Rtx-CLPesticides Signal #2 Phase: Rtx-CLPesticides2  
 Signal #1 Info : 30M x 0.32mm x 0.5 Signal #2 Info : 30M x 0.32mm x 0.25µm



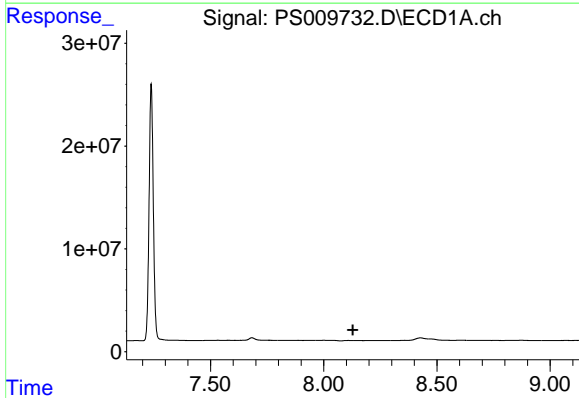


#4 2,4-DCAA  
 R.T.: 7.238 min  
 Delta R.T.: -0.004 min  
 Response: 324385051  
 Conc: 586.41 ng/ml

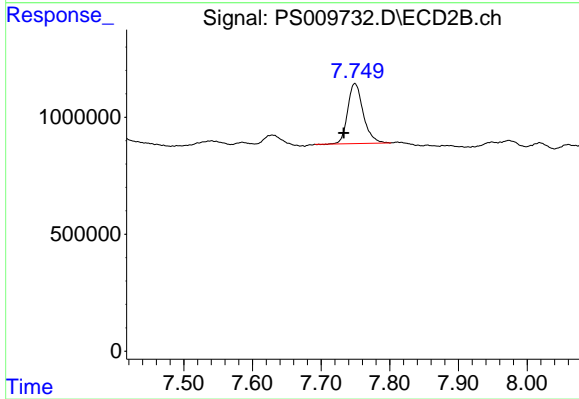
Instrument :  
 ECD\_S  
 ClientSampled :



#4 2,4-DCAA  
 R.T.: 6.928 min  
 Delta R.T.: -0.008 min  
 Response: 307946321  
 Conc: 560.72 ng/ml



#8 DICHLORPROP  
 R.T.: 0.000 min  
 Exp R.T. : 8.129 min  
 Response: 0  
 Conc: N.D.



#8 DICHLORPROP  
 R.T.: 7.749 min  
 Delta R.T.: 0.016 min  
 Response: 4038686  
 Conc: 7.28 ng/ml