

Data Path : Z:\pestpcbsrv\HPCHEM1\ECD_S\Data\PS041420\
 Data File : PS009757.D
 Signal(s) : Signal #1: ECD1A.ch Signal #2: ECD2B.ch
 Acq On : 14 Apr 2020 22:37
 Operator : DD\AJ
 Sample : HSTDCCC750
 Misc :
 ALS Vial : 3 Sample Multiplier: 1

Instrument :
 ECD_S
 ClientSampleId :

Integration File signal 1: autoint1.e
 Integration File signal 2: autoint2.e
 Quant Time: Apr 15 05:22:02 2020
 Quant Method : Z:\pestpcbsrv\HPCHEM1\ECD_S\Method\PS031120.M
 Quant Title : 8080.M
 QLast Update : Thu Mar 12 07:13:24 2020
 Response via : Initial Calibration
 Integrator: ChemStation

Volume Inj. : 2 µl
 Signal #1 Phase : Rtx-CLPesticides Signal #2 Phase: Rtx-CLPesticides2
 Signal #1 Info : 30M x 0.32mm x0.5 Signal #2 Info : 30M x 0.32mm x 0.25µm

	Compound	RT#1	RT#2	Resp#1	Resp#2	ng/ml	ng/ml

System Monitoring Compounds							
4) S	2,4-DCAA	7.238	6.928	441.7E6	375.4E6	798.547	683.521
Target Compounds							
1) T	Dalapon	3.046	2.629	484.6E6	468.1E6	621.437	594.561
2) T	3,5-DICHL...	6.448	6.075	552.1E6	516.0E6	731.478	634.400
3) T	4-Nitroph...	7.067	6.531	195.4E6	209.7E6	818.357	658.944
5) T	DICAMBA	7.431	7.098	1553.8E6	1419.2E6	730.115	618.239
6) T	MCP P	7.601	7.196	123.0E6	117.4E6	49.989	64.573 #
7) T	MCPA	7.751	7.412	174.9E6	169.2E6	57.411	62.697
8) T	DICHLORPROP	8.124	7.725	377.0E6	358.7E6	730.920	646.520
9) T	2,4-D	8.353	8.018	405.3E6	433.4E6	768.829	659.310
10) T	Pentachlo...	8.667	8.452	5120.0E6	4373.0E6	728.185	576.149
11) T	2,4,5-TP ...	9.215	8.812	2063.3E6	1910.1E6	752.693	640.719
12) T	2,4,5-T	9.499	9.191	2008.5E6	1933.2E6	789.551	654.824
13) T	2,4-DB	10.052	9.698	281.0E6	261.2E6	812.390	687.957
14) T	DINOSEB	11.218	10.033	1510.2E6	1412.3E6	738.776	642.991
15) T	Picloram	11.030	11.012	2021.1E6	2128.6E6	665.933	522.711
16) T	DCPA	11.482	10.963	2570.7E6	2465.7E6	741.627	636.635

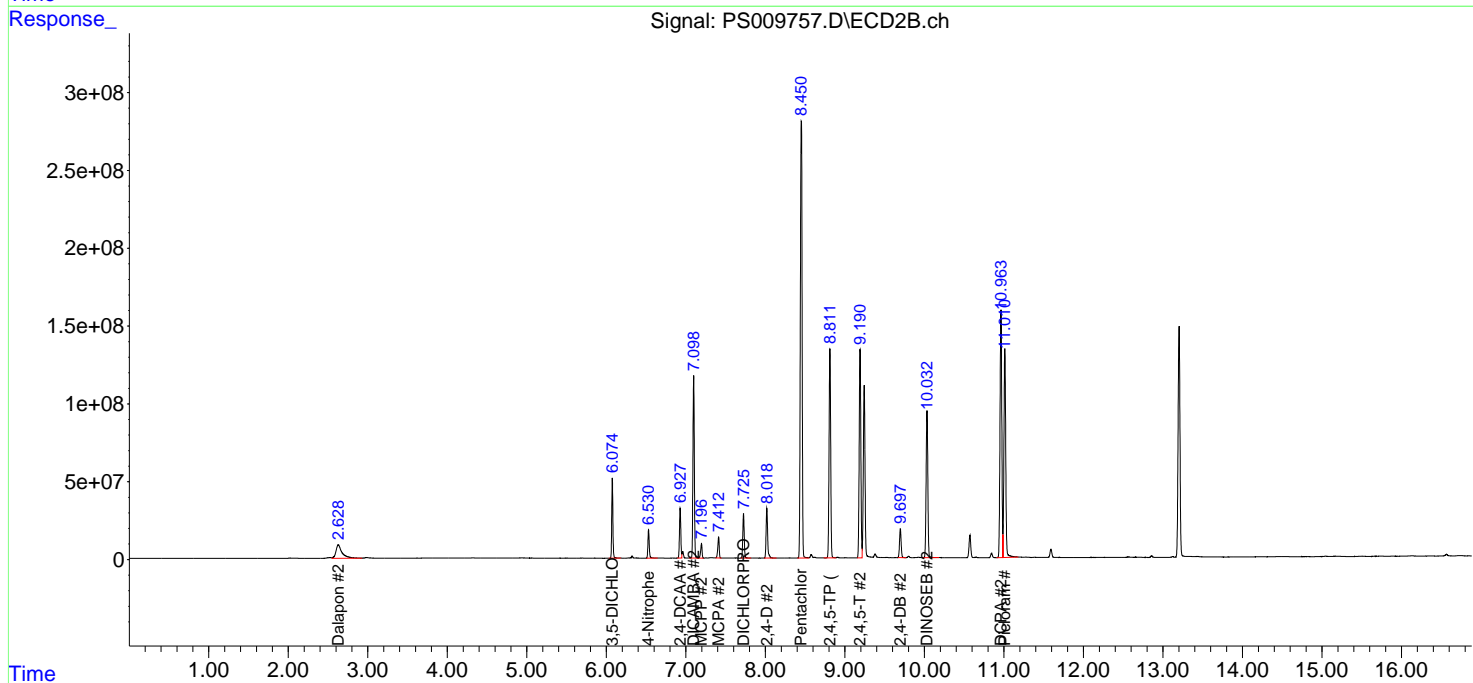
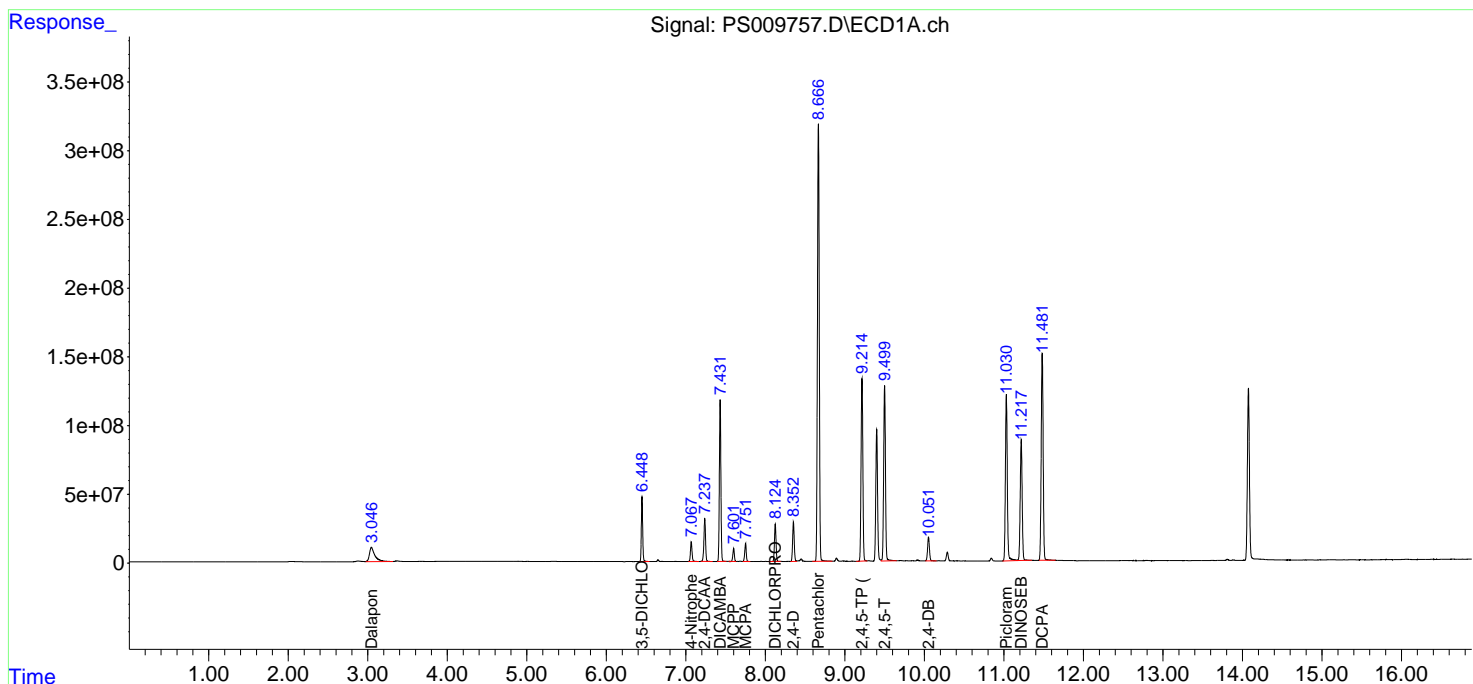
(f)=RT Delta > 1/2 Window (#)=Amounts differ by > 25% (m)=manual int.

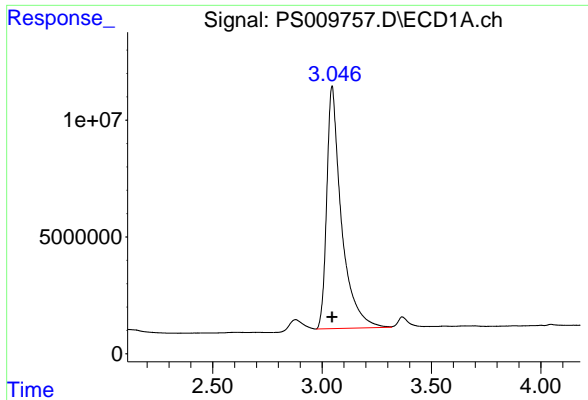
Data Path : Z:\pestpcbsrv\HPCHEM1\ECD_S\Data\PS041420\
 Data File : PS009757.D
 Signal(s) : Signal #1: ECD1A.ch Signal #2: ECD2B.ch
 Acq On : 14 Apr 2020 22:37
 Operator : DD\AJ
 Sample : HSTDCCC750
 Misc :
 ALS Vial : 3 Sample Multiplier: 1

Instrument :
 ECD_S
 ClientSampled :

Integration File signal 1: autoint1.e
 Integration File signal 2: autoint2.e
 Quant Time: Apr 15 05:22:02 2020
 Quant Method : Z:\pestpcbsrv\HPCHEM1\ECD_S\Method\PS031120.M
 Quant Title : 8080.M
 QLast Update : Thu Mar 12 07:13:24 2020
 Response via : Initial Calibration
 Integrator: ChemStation

Volume Inj. : 2 µl
 Signal #1 Phase : Rtx-CLPesticides Signal #2 Phase: Rtx-CLPesticides2
 Signal #1 Info : 30M x 0.32mm x0.5 Signal #2 Info : 30M x 0.32mm x 0.25µm

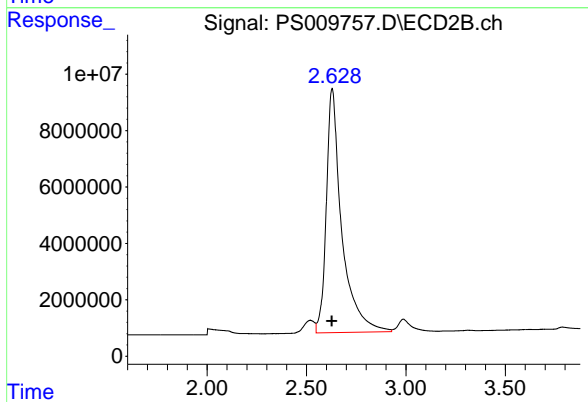




#1 Dalapon

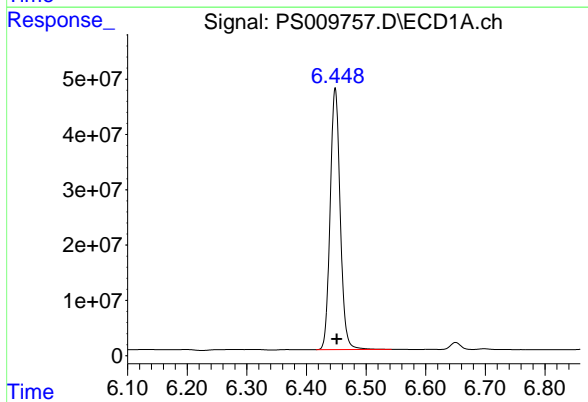
R.T.: 3.046 min
 Delta R.T.: 0.000 min
 Response: 484617388
 Conc: 621.44 ng/ml

Instrument :
 ECD_S
 ClientSampleId :



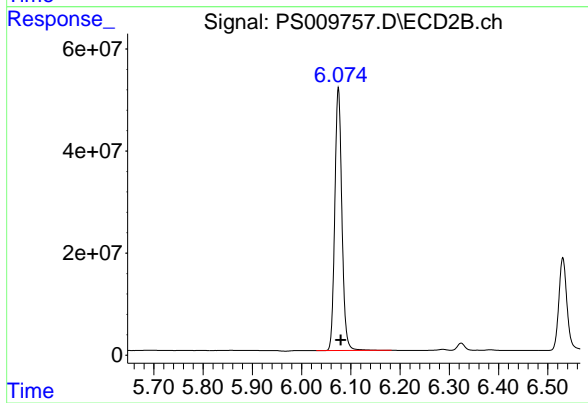
#1 Dalapon

R.T.: 2.629 min
 Delta R.T.: 0.002 min
 Response: 468134955
 Conc: 594.56 ng/ml



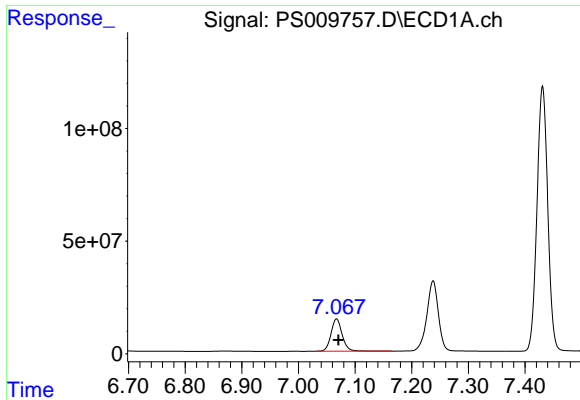
#2 3,5-DICHLOROBENZOIC ACID

R.T.: 6.448 min
 Delta R.T.: -0.003 min
 Response: 552117970
 Conc: 731.48 ng/ml



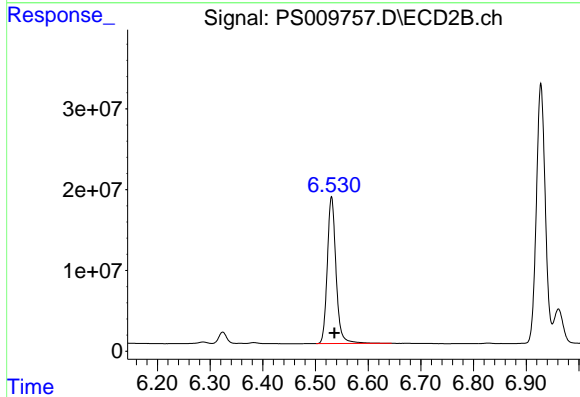
#2 3,5-DICHLOROBENZOIC ACID

R.T.: 6.075 min
 Delta R.T.: -0.005 min
 Response: 515961391
 Conc: 634.40 ng/ml

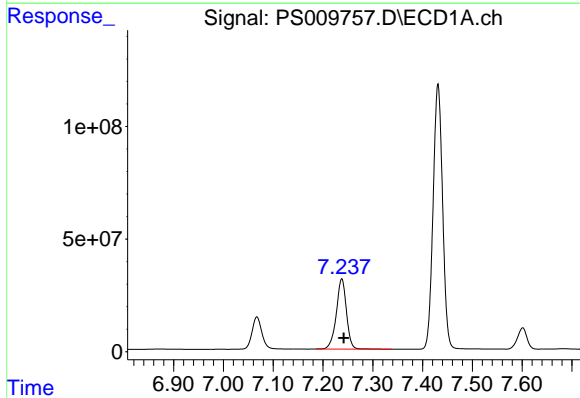


#3 4-Nitrophenol
 R.T.: 7.067 min
 Delta R.T.: -0.003 min
 Response: 195352364
 Conc: 818.36 ng/ml

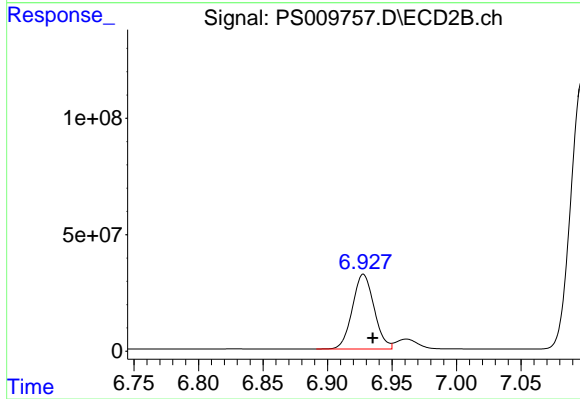
Instrument :
 ECD_S
 ClientSampleId :



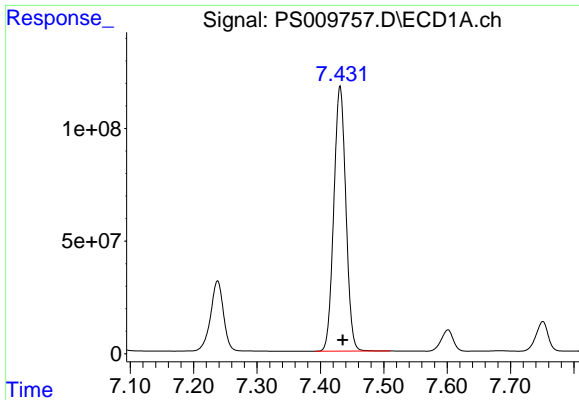
#3 4-Nitrophenol
 R.T.: 6.531 min
 Delta R.T.: -0.006 min
 Response: 209674794
 Conc: 658.94 ng/ml



#4 2,4-DCAA
 R.T.: 7.238 min
 Delta R.T.: -0.004 min
 Response: 441732545
 Conc: 798.55 ng/ml



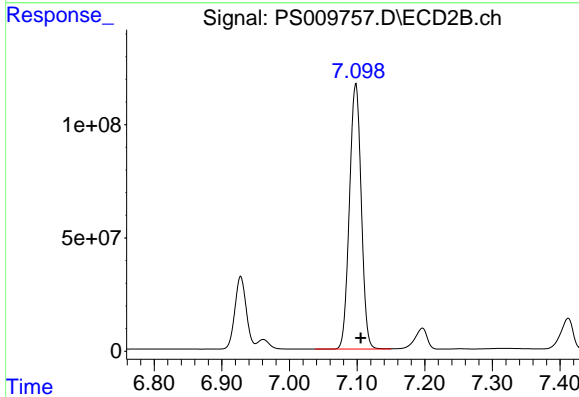
#4 2,4-DCAA
 R.T.: 6.928 min
 Delta R.T.: -0.007 min
 Response: 375388383
 Conc: 683.52 ng/ml



#5 DICAMBA

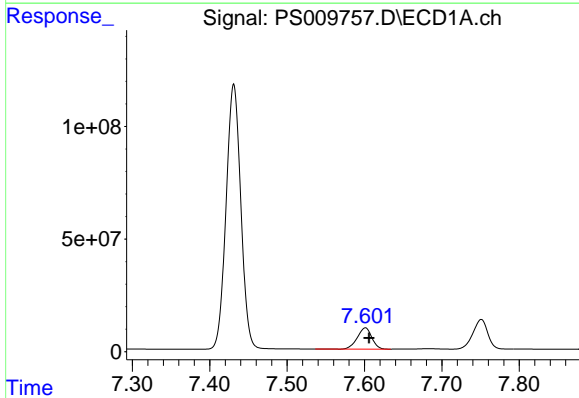
R.T.: 7.431 min
 Delta R.T.: -0.004 min
 Response: 1553804219
 Conc: 730.11 ng/ml

Instrument :
 ECD_S
 ClientSampleId :



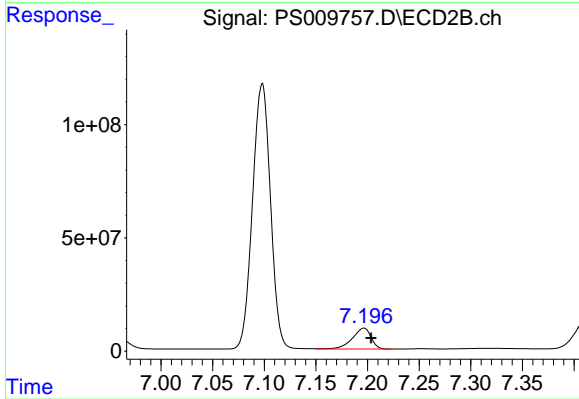
#5 DICAMBA

R.T.: 7.098 min
 Delta R.T.: -0.008 min
 Response: 1419229668
 Conc: 618.24 ng/ml



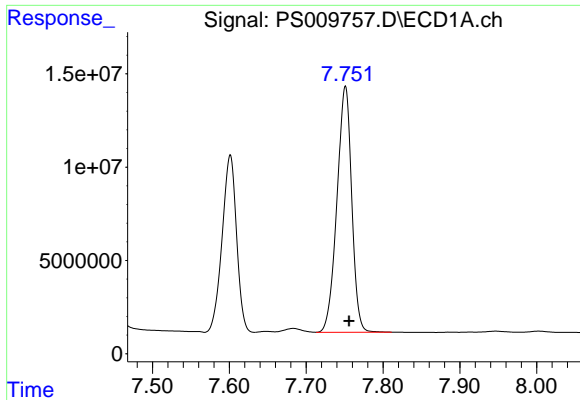
#6 MCPP

R.T.: 7.601 min
 Delta R.T.: -0.005 min
 Response: 123005194
 Conc: 49.99 ug/ml



#6 MCPP

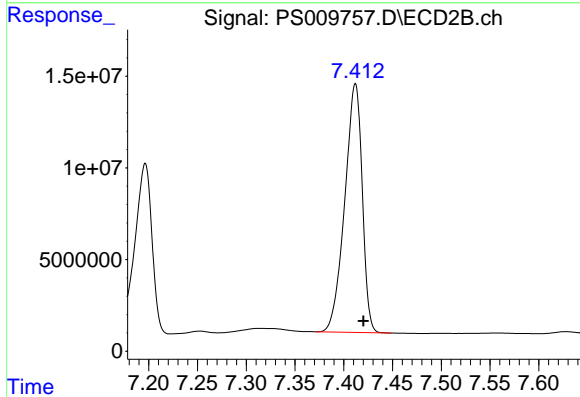
R.T.: 7.196 min
 Delta R.T.: -0.007 min
 Response: 117446820
 Conc: 64.57 ug/ml



#7 MCPA

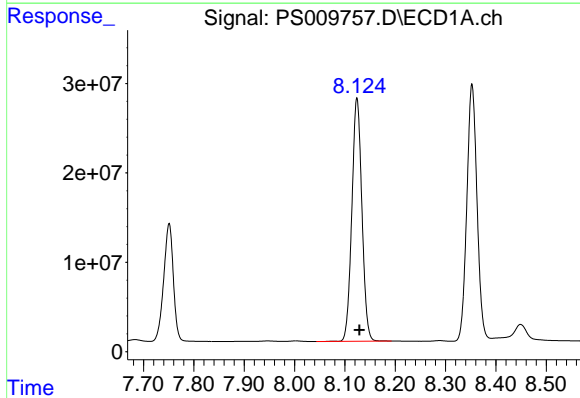
R.T.: 7.751 min
 Delta R.T.: -0.005 min
 Response: 174855397
 Conc: 57.41 ug/ml

Instrument :
 ECD_S
 ClientSampleId :



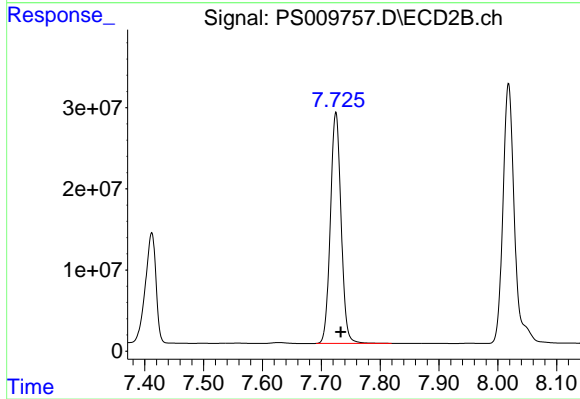
#7 MCPA

R.T.: 7.412 min
 Delta R.T.: -0.008 min
 Response: 169195080
 Conc: 62.70 ug/ml



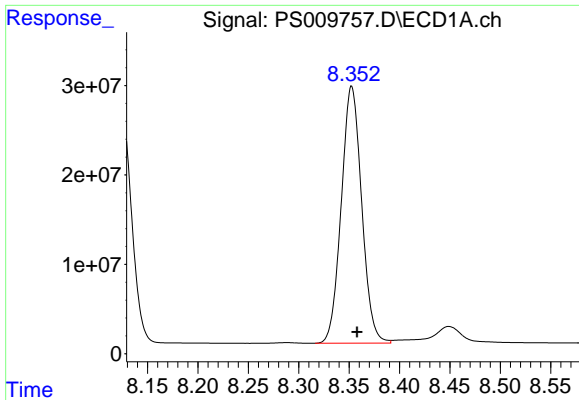
#8 DICHLORPROP

R.T.: 8.124 min
 Delta R.T.: -0.005 min
 Response: 376966964
 Conc: 730.92 ng/ml



#8 DICHLORPROP

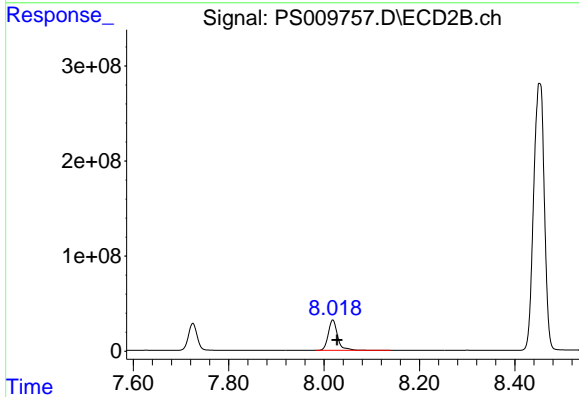
R.T.: 7.725 min
 Delta R.T.: -0.008 min
 Response: 358703569
 Conc: 646.52 ng/ml



#9 2,4-D

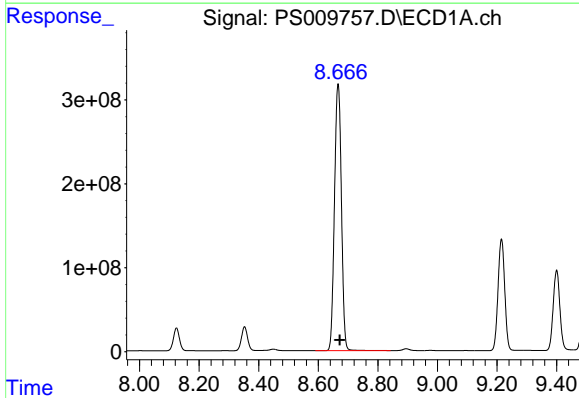
R.T.: 8.353 min
 Delta R.T.: -0.005 min
 Response: 405345712
 Conc: 768.83 ng/ml

Instrument :
 ECD_S
 ClientSampled :



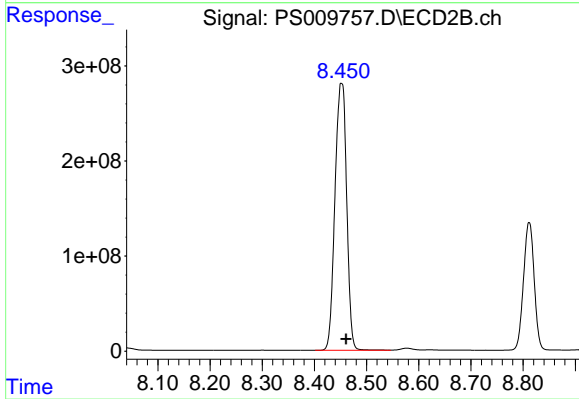
#9 2,4-D

R.T.: 8.018 min
 Delta R.T.: -0.009 min
 Response: 433405056
 Conc: 659.31 ng/ml



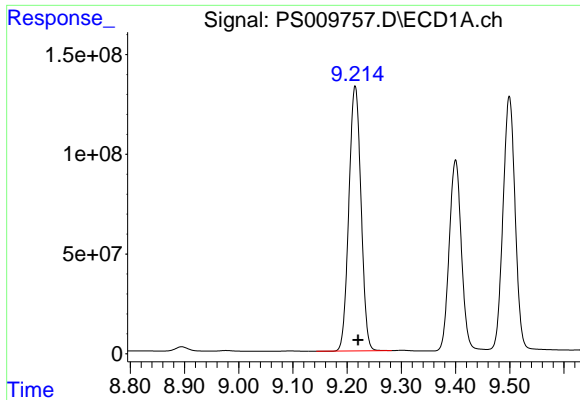
#10 Pentachlorophenol

R.T.: 8.667 min
 Delta R.T.: -0.005 min
 Response: 5120041214
 Conc: 728.19 ng/ml



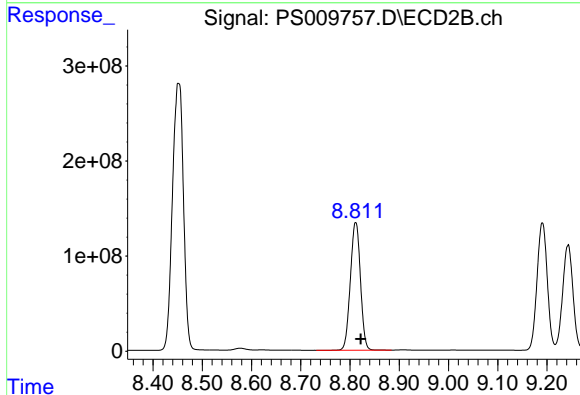
#10 Pentachlorophenol

R.T.: 8.452 min
 Delta R.T.: -0.009 min
 Response: 4372958215
 Conc: 576.15 ng/ml

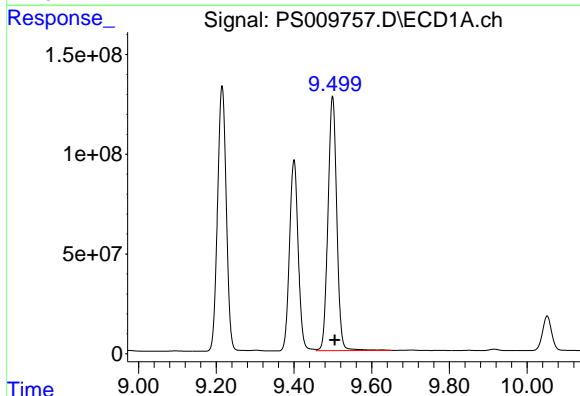


#11 2,4,5-TP (SILVEX)
 R.T.: 9.215 min
 Delta R.T.: -0.006 min
 Response: 2063285145
 Conc: 752.69 ng/ml

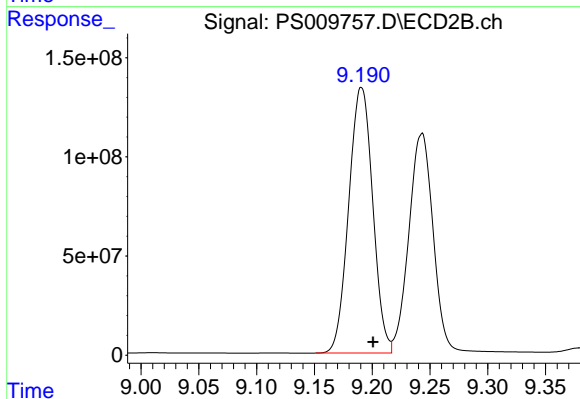
Instrument :
 ECD_S
 ClientSampleId :



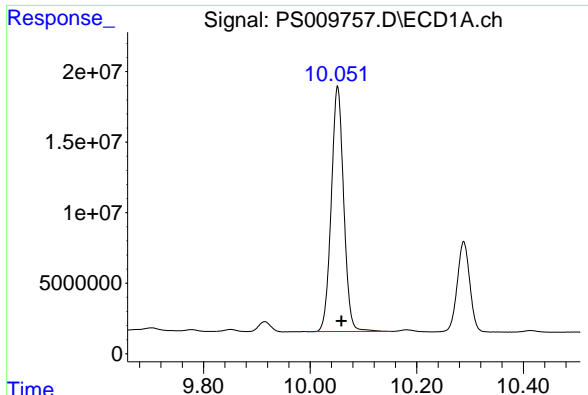
#11 2,4,5-TP (SILVEX)
 R.T.: 8.812 min
 Delta R.T.: -0.010 min
 Response: 1910060135
 Conc: 640.72 ng/ml



#12 2,4,5-T
 R.T.: 9.499 min
 Delta R.T.: -0.006 min
 Response: 2008501065
 Conc: 789.55 ng/ml



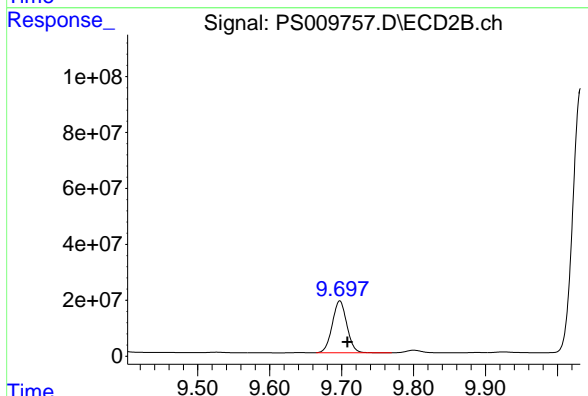
#12 2,4,5-T
 R.T.: 9.191 min
 Delta R.T.: -0.010 min
 Response: 1933157330
 Conc: 654.82 ng/ml



#13 2,4-DB

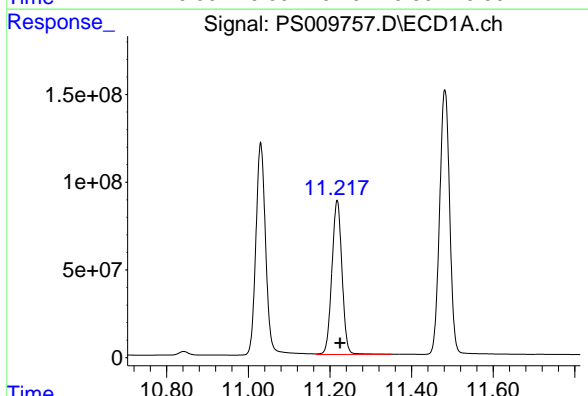
R.T.: 10.052 min
 Delta R.T.: -0.007 min
 Response: 281049894
 Conc: 812.39 ng/ml

Instrument :
 ECD_S
 ClientSampled :



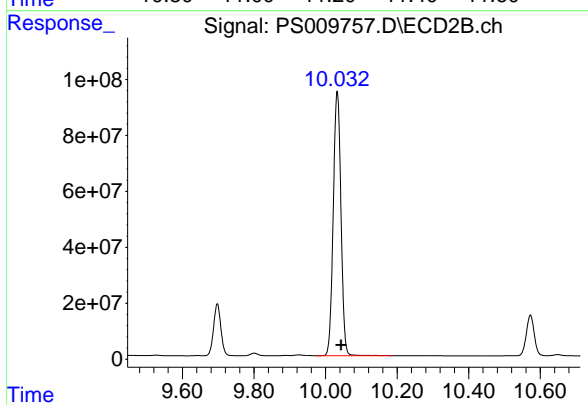
#13 2,4-DB

R.T.: 9.698 min
 Delta R.T.: -0.011 min
 Response: 261159255
 Conc: 687.96 ng/ml



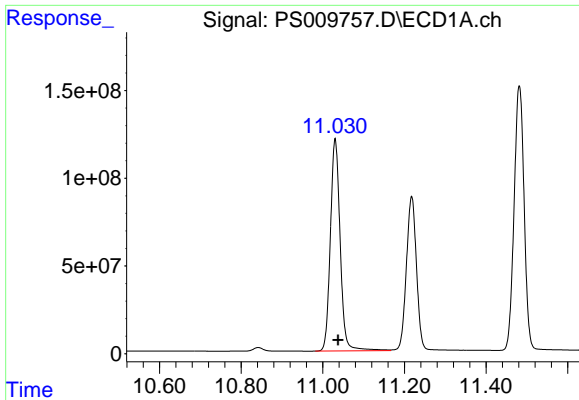
#14 DINOSEB

R.T.: 11.218 min
 Delta R.T.: -0.007 min
 Response: 1510169625
 Conc: 738.78 ng/ml



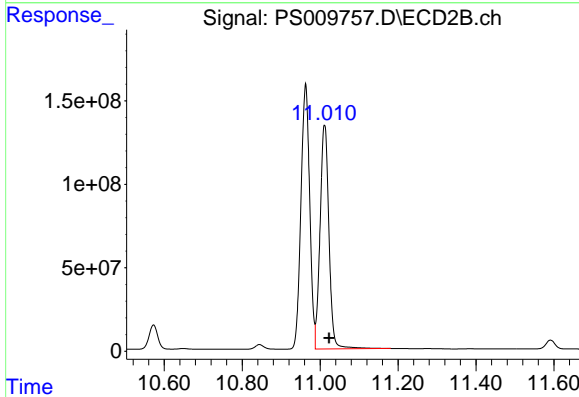
#14 DINOSEB

R.T.: 10.033 min
 Delta R.T.: -0.011 min
 Response: 1412315655
 Conc: 642.99 ng/ml

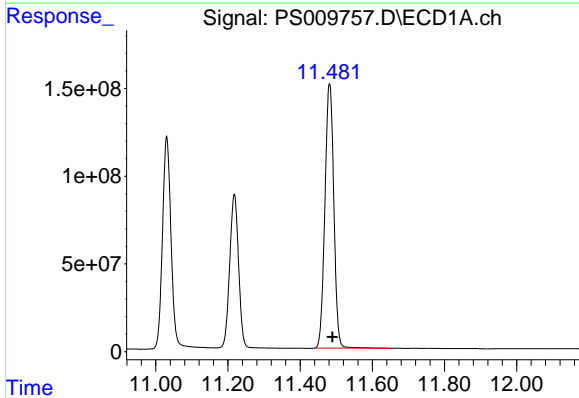


#15 Picloram
 R.T.: 11.030 min
 Delta R.T.: -0.007 min
 Response: 2021058941
 Conc: 665.93 ng/ml

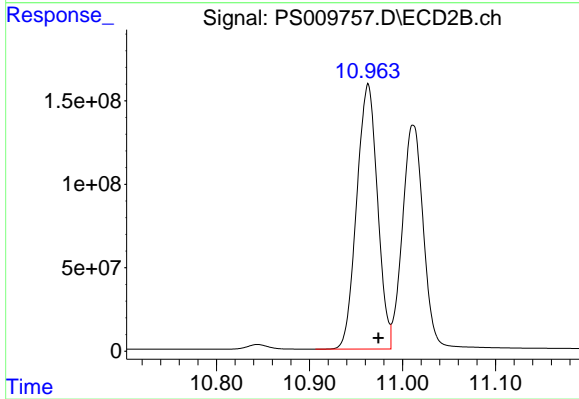
Instrument :
 ECD_S
 ClientSampled :



#15 Picloram
 R.T.: 11.012 min
 Delta R.T.: -0.012 min
 Response: 2128570219
 Conc: 522.71 ng/ml



#16 DCPA
 R.T.: 11.482 min
 Delta R.T.: -0.007 min
 Response: 2570668047
 Conc: 741.63 ng/ml



#16 DCPA
 R.T.: 10.963 min
 Delta R.T.: -0.011 min
 Response: 2465713434
 Conc: 636.64 ng/ml