

Data Path : Z:\pestpcbsrv\HPCHEM1\ECD_S\Data\PS041423\
 Data File : PS022721.D
 Signal(s) : Signal #1: ECD1A.ch Signal #2: ECD2B.ch
 Acq On : 14 Apr 2023 08:35
 Operator : AR\AJ
 Sample : I.BLK
 Misc :
 ALS Vial : 2 Sample Multiplier: 1

Instrument :
 ECD_S
 ClientSampleId :

Integration File signal 1: autoint1.e
 Integration File signal 2: autoint2.e
 Quant Time: Apr 14 22:09:27 2023
 Quant Method : Z:\pestpcbsrv\HPCHEM1\ECD_S\Method\PS041223.M
 Quant Title : 8080.M
 QLast Update : Wed Apr 12 14:05:56 2023
 Response via : Initial Calibration
 Integrator: ChemStation

Volume Inj. : 2 µl
 Signal #1 Phase : Rtx-CLPesticides Signal #2 Phase: Rtx-CLPesticides2
 Signal #1 Info : 30M x 0.32mm x0.5 Signal #2 Info : 30M x 0.32mm x 0.25µm

	Compound	RT#1	RT#2	Resp#1	Resp#2	ng/ml	ng/ml

System Monitoring Compounds							
4) S	2,4-DCAA	6.485	6.866	1399.4E6	564.5E6	562.081	553.960
Target Compounds							
1) T	Dalapon	2.578	0.000	7986400	0	2.704	N.D. #
2) T	3,5-DICHL...	5.835	0.000	2457515	0	<MDL	N.D. #
3) T	4-Nitroph...	6.319	0.000	7547744	0	4.068	N.D. #
5) T	DICAMBA	6.634	7.035	2341967	952483	<MDL	<MDL #
6) T	MCP P	6.816	0.000	2166999	0	<MDL	N.D. #
7) T	MCPA	6.862f	0.000	7123359	0	<MDL	N.D. #
8) T	DICHLORPROP	7.246	7.674	1983015	2115638	<MDL	1.900 #
9) T	2,4-D	7.449	0.000	2051945	0	<MDL	N.D. #
10) T	Pentachlo...	7.683	8.377	12101416	3197967	<MDL	<MDL #
11) T	2,4,5-TP ...	8.220	8.737	7140092	1441016	<MDL	<MDL #
12) T	2,4,5-T	8.480	9.114	7235496	1750552	<MDL	<MDL #
13) T	2,4-DB	8.979	0.000	11691443	0	2.736	N.D. #
14) T	DINOSEB	10.072	9.951	4592048	1263437	<MDL	<MDL #
15) T	Picloram	9.890	10.922	115.5E6	19867201	3.879	2.443 #
16) T	DCPA	10.339	10.884	10164691	2703172	<MDL	<MDL #

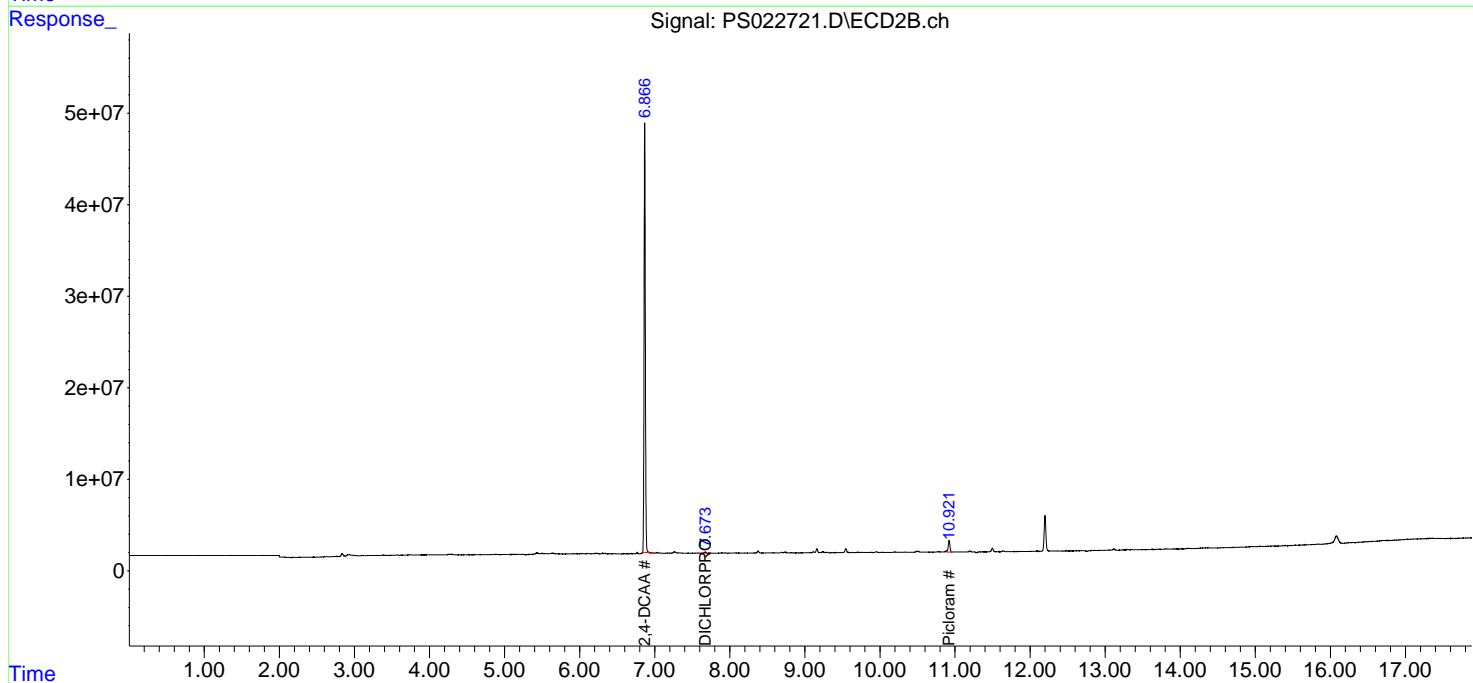
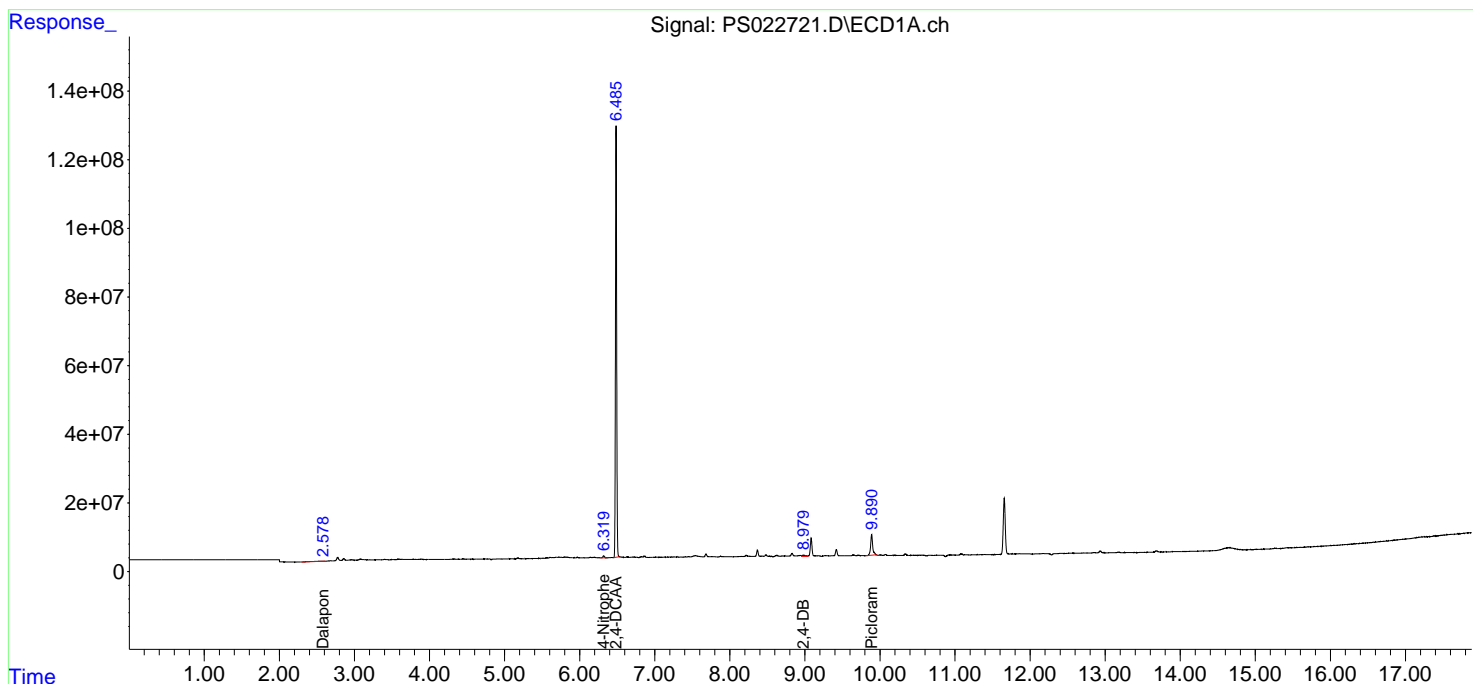
(f)=RT Delta > 1/2 Window (#)=Amounts differ by > 25% (m)=manual int.

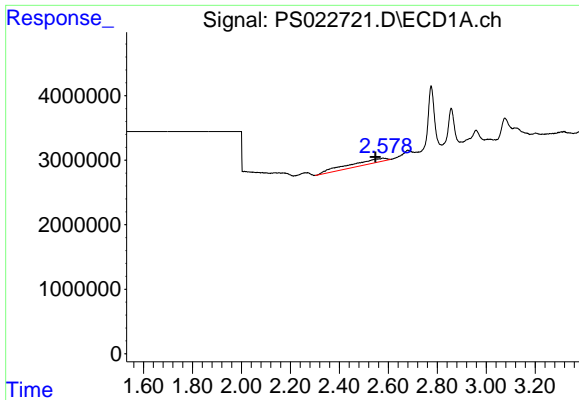
Data Path : Z:\pestpcbsrv\HPCHEM1\ECD_S\Data\PS041423\
 Data File : PS022721.D
 Signal(s) : Signal #1: ECD1A.ch Signal #2: ECD2B.ch
 Acq On : 14 Apr 2023 08:35
 Operator : AR\AJ
 Sample : I.BLK
 Misc :
 ALS Vial : 2 Sample Multiplier: 1

Instrument :
 ECD_S
 ClientSampleId :

Integration File signal 1: autoint1.e
 Integration File signal 2: autoint2.e
 Quant Time: Apr 14 22:09:27 2023
 Quant Method : Z:\pestpcbsrv\HPCHEM1\ECD_S\Method\PS041223.M
 Quant Title : 8080.M
 QLast Update : Wed Apr 12 14:05:56 2023
 Response via : Initial Calibration
 Integrator: ChemStation

Volume Inj. : 2 µl
 Signal #1 Phase : Rtx-CLPesticides Signal #2 Phase: Rtx-CLPesticides2
 Signal #1 Info : 30M x 0.32mm x 0.5 Signal #2 Info : 30M x 0.32mm x 0.25µm

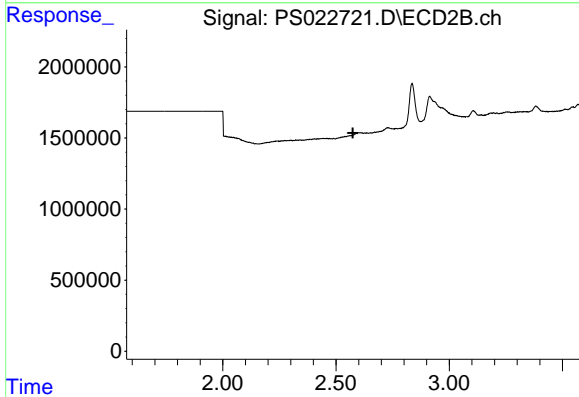




#1 Dalapon

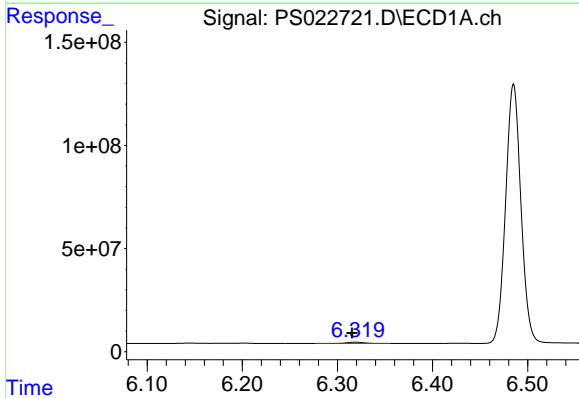
R.T.: 2.578 min
 Delta R.T.: 0.031 min
 Response: 7986400
 Conc: 2.70 ng/ml

Instrument :
 ECD_S
 ClientSampleId :



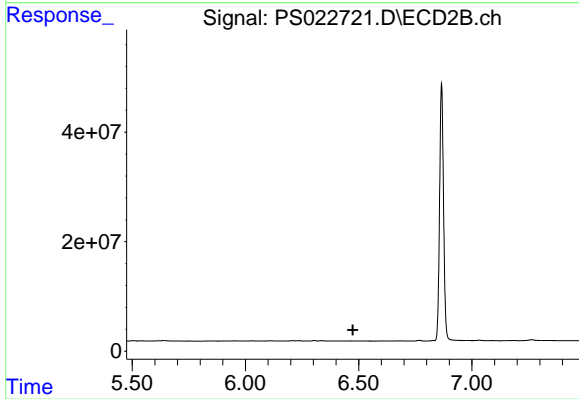
#1 Dalapon

R.T.: 0.000 min
 Exp R.T. : 2.574 min
 Response: 0
 Conc: N.D.



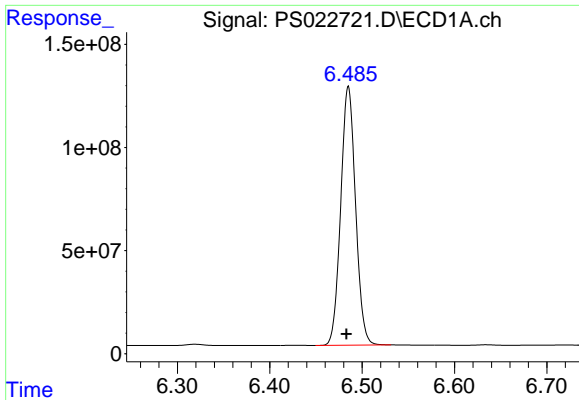
#3 4-Nitrophenol

R.T.: 6.319 min
 Delta R.T.: 0.004 min
 Response: 7547744
 Conc: 4.07 ng/ml



#3 4-Nitrophenol

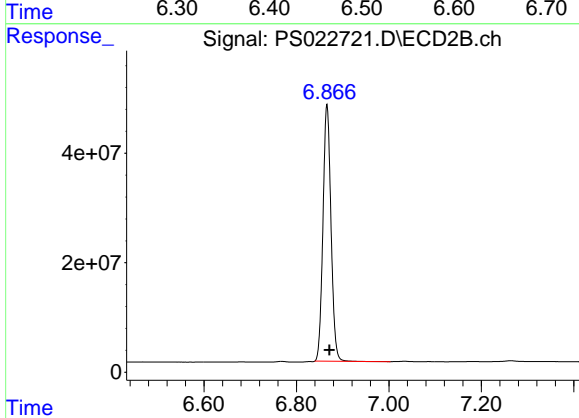
R.T.: 0.000 min
 Exp R.T. : 6.474 min
 Response: 0
 Conc: N.D.



#4 2,4-DCAA

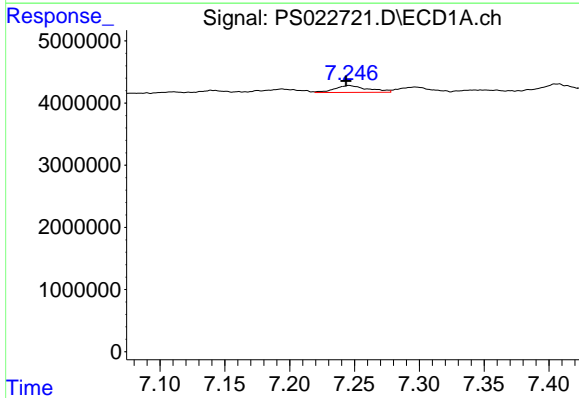
R.T.: 6.485 min
 Delta R.T.: 0.002 min
 Response: 1399415179
 Conc: 562.08 ng/ml

Instrument :
 ECD_S
 ClientSampleId :



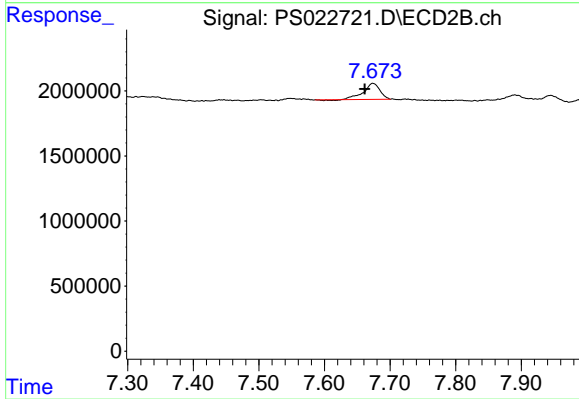
#4 2,4-DCAA

R.T.: 6.866 min
 Delta R.T.: -0.005 min
 Response: 564454970
 Conc: 553.96 ng/ml



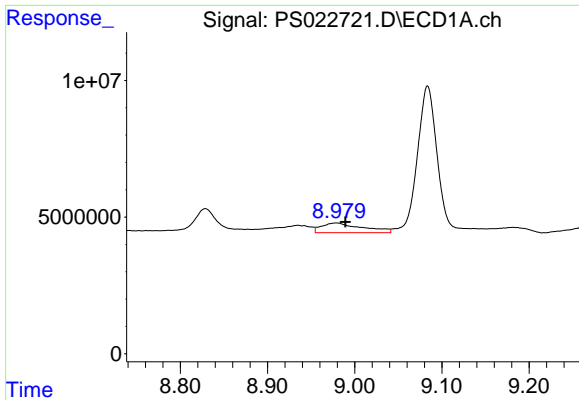
#8 DICHLORPROP

R.T.: 7.246 min
 Delta R.T.: 0.003 min
 Response: 1983015
 Conc: N.D.



#8 DICHLORPROP

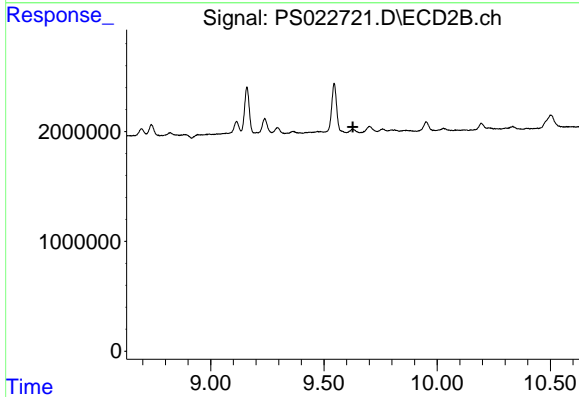
R.T.: 7.674 min
 Delta R.T.: 0.012 min
 Response: 2115638
 Conc: 1.90 ng/ml



#13 2,4-DB

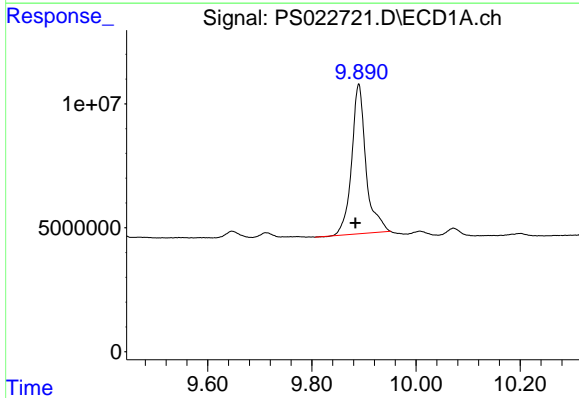
R.T.: 8.979 min
 Delta R.T.: -0.011 min
 Response: 11691443
 Conc: 2.74 ng/ml

Instrument :
 ECD_S
 ClientSampleId :



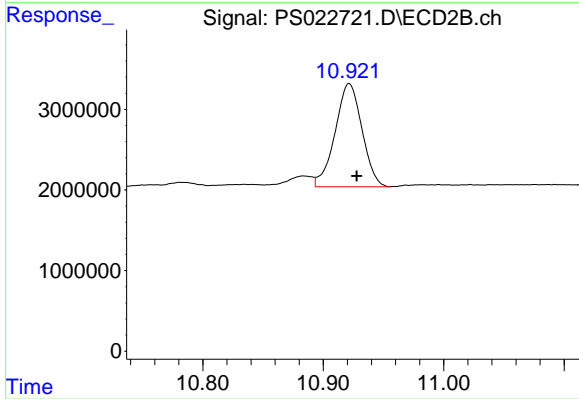
#13 2,4-DB

R.T.: 0.000 min
 Exp R.T. : 9.628 min
 Response: 0
 Conc: N.D.



#15 Picloram

R.T.: 9.890 min
 Delta R.T.: 0.007 min
 Response: 115540880
 Conc: 3.88 ng/ml



#15 Picloram

R.T.: 10.922 min
 Delta R.T.: -0.006 min
 Response: 19867201
 Conc: 2.44 ng/ml