

Data Path : Z:\pestpcbsrv\HPCHEM1\ECD\_0\Data\P0041621\  
 Data File : P0077044.D  
 Signal(s) : Signal #1: ECD1A.CH Signal #2: ECD2B.CH  
 Acq On : 16 Apr 2021 17:38  
 Operator : AJ/MA  
 Sample : M2051-07  
 Misc :  
 ALS Vial : 20 Sample Multiplier: 1

Instrument :  
 ECD\_S  
 ClientSampleId :  
 0124019

Integration File signal 1: autoint1.e  
 Integration File signal 2: autoint2.e  
 Quant Time: Apr 17 05:06:16 2021  
 Quant Method : Z:\pestpcbsrv\HPCHEM1\ECD\_0\methods\P0040121.M  
 Quant Title : GC EXTRACTABLES  
 QLast Update : Fri Apr 02 05:20:17 2021  
 Response via : Initial Calibration  
 Integrator: ChemStation 6890 Scale Mode: Small noise peaks clipped

Volume Inj. : 2 µl  
 Signal #1 Phase : ZB-MR1 Signal #2 Phase: ZB-MR2  
 Signal #1 Info : 30Mx0.32mmx 0.50µ Signal #2 Info : 30M x 0.32mm x 0.25µm

Compound	RT#1	RT#2	Resp#1	Resp#2	ng/ml	ng/ml
-----						
System Monitoring Compounds						
1) SA Tetrachlo...	4.898	3.893	2104695	999985	22.628	19.927
2) SA Decachlor...	10.867	9.136	907307	302741	9.796	6.239 #
Target Compounds						
3) L1 AR-1016-1	6.230	5.162f	364259	29938	125.306	21.371 #
4) L1 AR-1016-2	6.230f	5.162	364259	29938	77.296	10.589 #
5) L1 AR-1016-3	6.327	0.000	123538	0	43.307	N.D. #
8) L2 AR-1221-1	5.150	4.144	1318286	47586	1457.049	96.637 #
10) L2 AR-1221-3	5.348	4.337	151674	11201	73.397	9.878 #
11) L3 AR-1232-1	5.348	4.337	151674	11201	92.045	12.117 #
12) L3 AR-1232-2	5.917	5.162	596068	29938	659.757	26.257 #
13) L3 AR-1232-3	6.230f	0.000	364259	0	197.554	N.D. #
14) L3 AR-1232-4	0.000	5.455	0	28210	N.D.	60.006 #
15) L3 AR-1232-5	6.520	0.000	117319	0	205.105	N.D. #
16) L4 AR-1242-1	6.230	5.162f	364259	29938	172.568	30.242 #
17) L4 AR-1242-2	6.230f	5.162	364259	29938	103.408	14.062 #
18) L4 AR-1242-3	6.327	0.000	123538	0	55.629	N.D. #
19) L4 AR-1242-4	0.000	5.455	0	28210	N.D.	29.168 #
20) L4 AR-1242-5	7.216	6.004	2519805	21056	1287.247	17.458 #
21) L5 AR-1248-1	6.230	5.162f	364259	29938	239.797	39.752 #
22) L5 AR-1248-2	6.520	0.000	117319	0	50.684	N.D. #
23) L5 AR-1248-3	0.000	5.455	0	28210	N.D.	19.377 #
25) L5 AR-1248-5	7.216	0.000	2519805	0	731.119	N.D. #
26) L6 AR-1254-1	0.000	6.004	0	21056	N.D.	8.033 #
28) L6 AR-1254-3	7.754	6.575	596114	57681	108.177	16.320 #
30) L6 AR-1254-5	8.488f	7.240	2465869	840472	560.664	257.812 #
31) L7 AR-1260-1	7.905	6.713	232803	122331	58.132	46.817
32) L7 AR-1260-2	8.170	6.910	252123	33435	50.900	10.588 #
33) L7 AR-1260-3	0.000	7.059	0	19815	N.D.	6.782 #
34) L7 AR-1260-4	0.000	7.541	0	12008	N.D.	4.800 #
35) L7 AR-1260-5	9.089	7.788	67524	41596	7.924	7.052
36) L8 AR-1262-1	0.000	7.240	0	840472	N.D.	474.819 #
37) L8 AR-1262-2	9.089	7.788	67524	41596	6.902	6.868
38) L8 AR-1262-3	0.000	8.074	0	22130	N.D.	8.798 #
39) L8 AR-1262-4	0.000	8.137	0	39522	N.D.	8.719 #
40) L8 AR-1262-5	0.000	8.636	0	29267	N.D.	14.777 #
41) L9 AR-1268-1	0.000	8.074	0	22130	N.D.	3.010 #
42) L9 AR-1268-2	0.000	8.137	0	39522	N.D.	5.915 #
44) L9 AR-1268-4	0.000	8.636	0	29267	N.D.	13.250 #
-----						

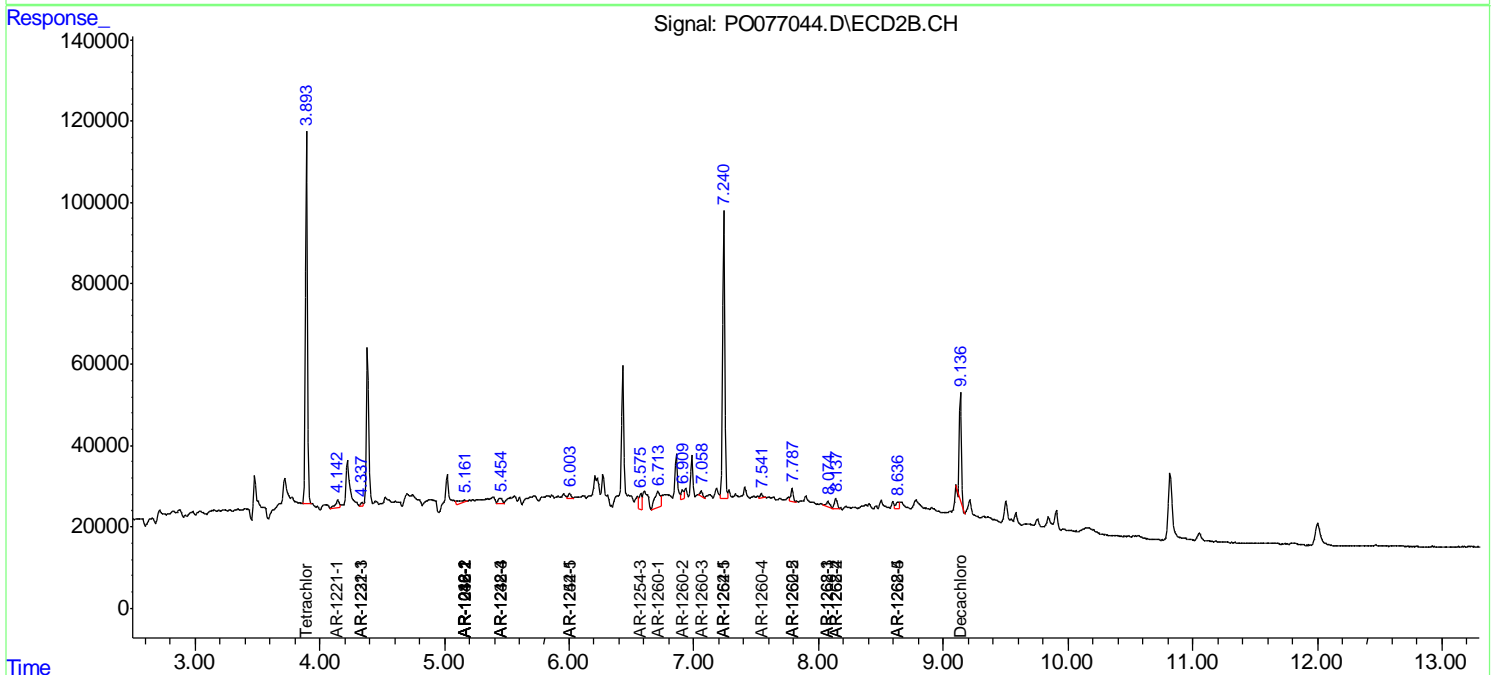
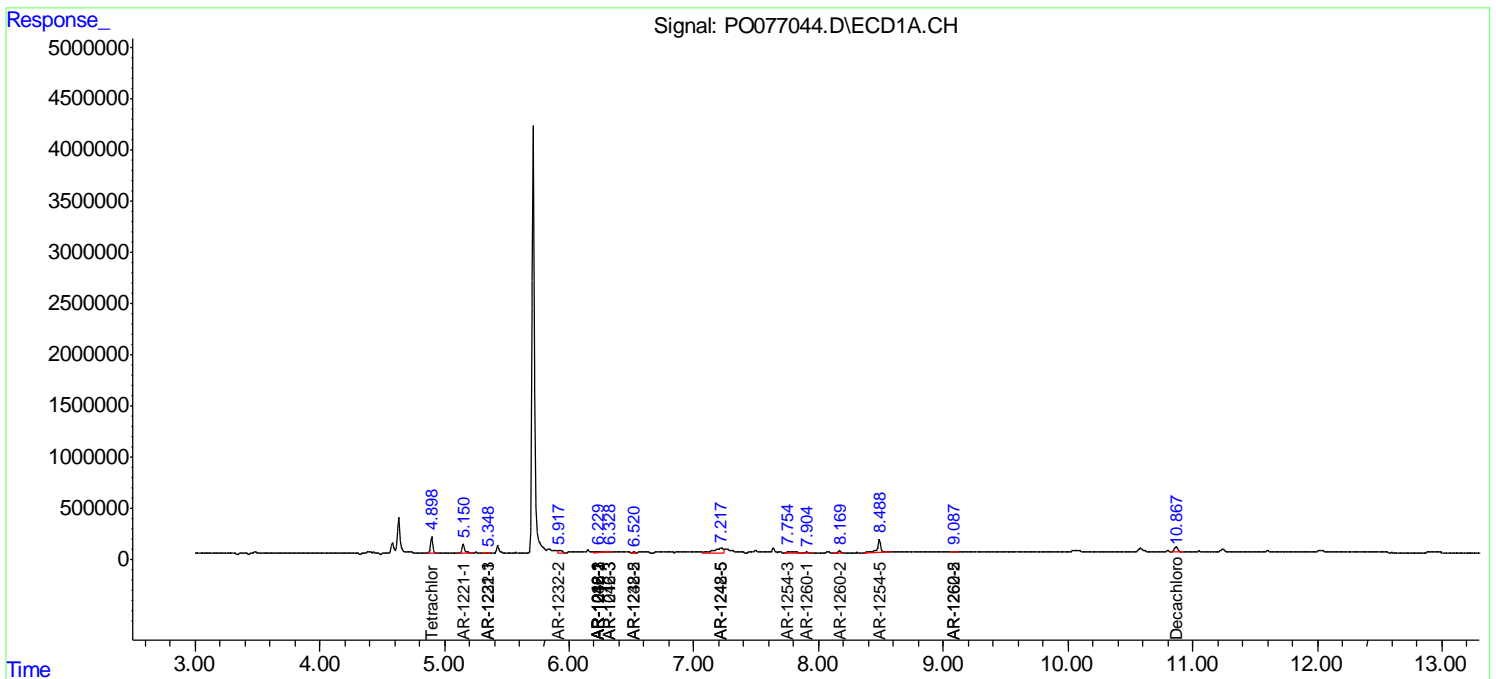
(f)=RT Delta > 1/2 Window (#)=Amounts differ by > 25% (m)=manual int.

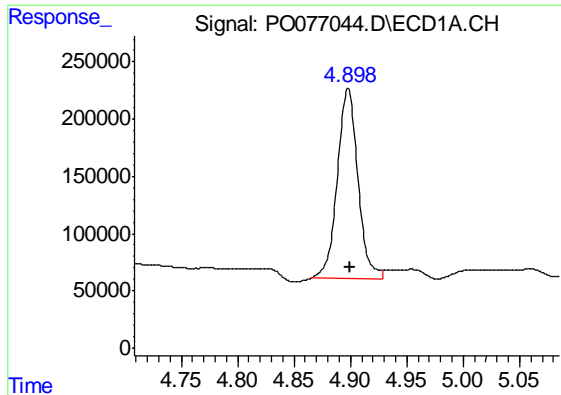
Data Path : Z:\pestpcbsrv\HPCHEM1\ECD\_O\Data\P0041621\  
 Data File : P0077044.D  
 Signal(s) : Signal #1: ECD1A.CH Signal #2: ECD2B.CH  
 Acq On : 16 Apr 2021 17:38  
 Operator : AJ/MA  
 Sample : M2051-07  
 Misc :  
 ALS Vial : 20 Sample Multiplier: 1

Instrument :  
 ECD\_S  
 ClientSampled :  
 0124019

Integration File signal 1: autoint1.e  
 Integration File signal 2: autoint2.e  
 Quant Time: Apr 17 05:06:16 2021  
 Quant Method : Z:\pestpcbsrv\HPCHEM1\ECD\_O\methods\P0040121.M  
 Quant Title : GC EXTRACTABLES  
 QLast Update : Fri Apr 02 05:20:17 2021  
 Response via : Initial Calibration  
 Integrator: ChemStation 6890 Scale Mode: Small noise peaks clipped

Volume Inj. : 2 µl  
 Signal #1 Phase : ZB-MR1 Signal #2 Phase: ZB-MR2  
 Signal #1 Info : 30Mx0.32mmx 0.50µ Signal #2 Info : 30M x 0.32mm x 0.25µm

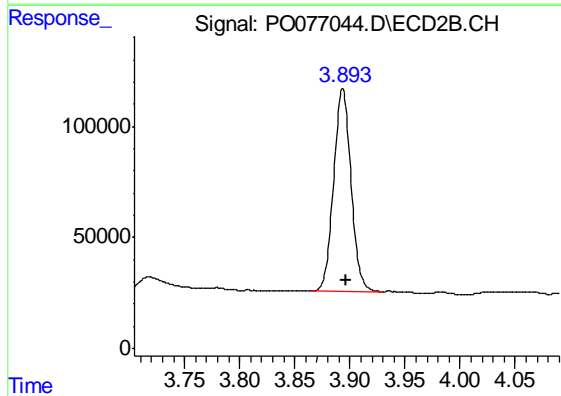




#1 Tetrachloro-m-xylene

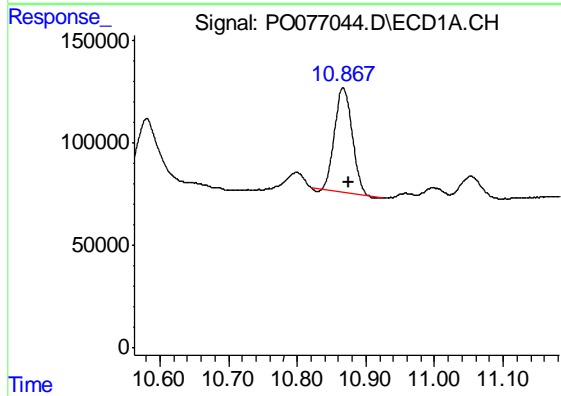
R.T.: 4.898 min  
Delta R.T.: -0.002 min  
Response: 2104695  
Conc: 22.63 ng/ml

Instrument :  
ECD\_S  
ClientSampleId :  
0124019



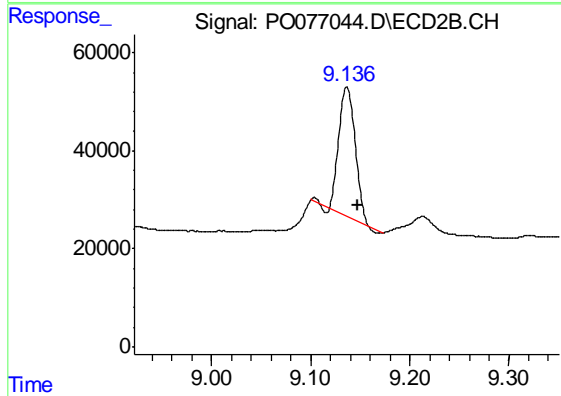
#1 Tetrachloro-m-xylene

R.T.: 3.893 min  
Delta R.T.: -0.004 min  
Response: 999985  
Conc: 19.93 ng/ml



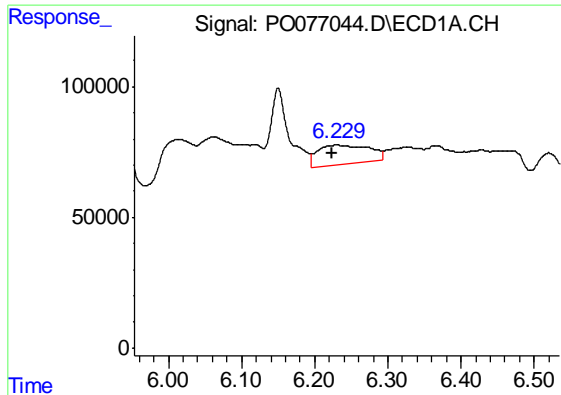
#2 Decachlorobiphenyl

R.T.: 10.867 min  
Delta R.T.: -0.009 min  
Response: 907307  
Conc: 9.80 ng/ml



#2 Decachlorobiphenyl

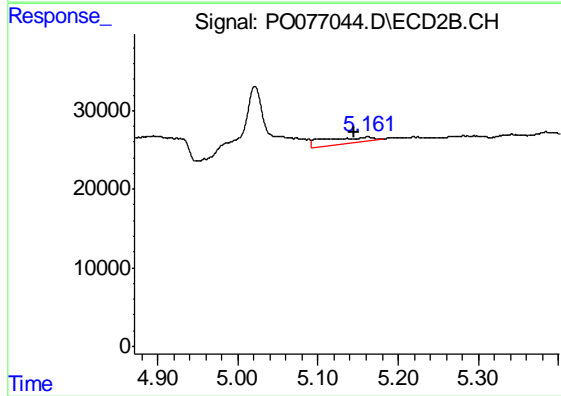
R.T.: 9.136 min  
Delta R.T.: -0.011 min  
Response: 302741  
Conc: 6.24 ng/ml



#3 AR-1016-1

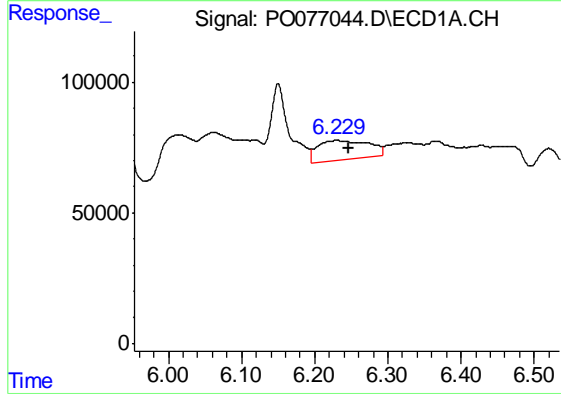
R.T.: 6.230 min  
 Delta R.T.: 0.007 min  
 Response: 364259  
 Conc: 125.31 ng/ml

Instrument :  
 ECD\_S  
 ClientSampled :  
 0124019



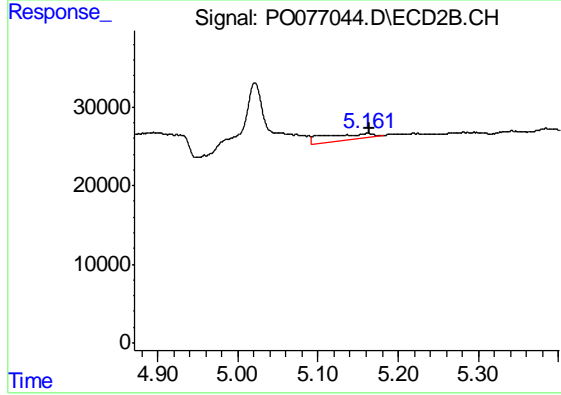
#3 AR-1016-1

R.T.: 5.162 min  
 Delta R.T.: 0.017 min  
 Response: 29938  
 Conc: 21.37 ng/ml



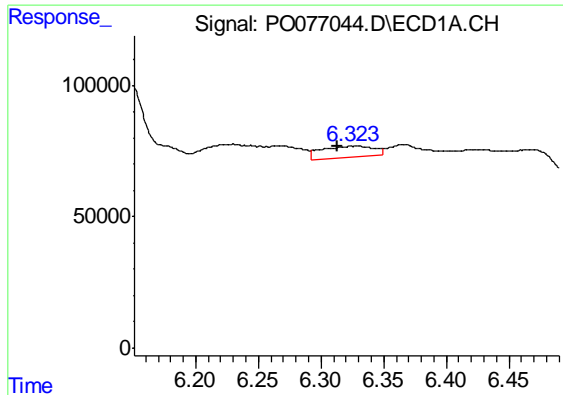
#4 AR-1016-2

R.T.: 6.230 min  
 Delta R.T.: -0.017 min  
 Response: 364259  
 Conc: 77.30 ng/ml



#4 AR-1016-2

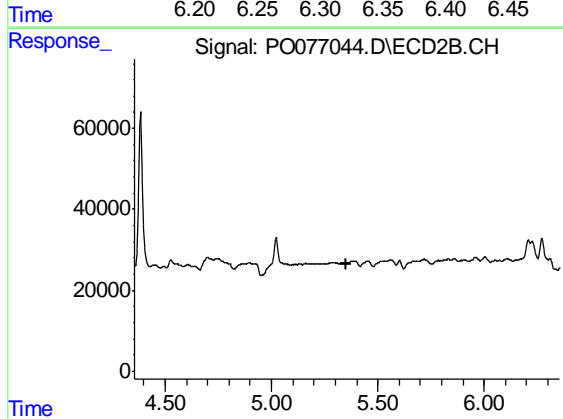
R.T.: 5.162 min  
 Delta R.T.: -0.002 min  
 Response: 29938  
 Conc: 10.59 ng/ml



#5 AR-1016-3

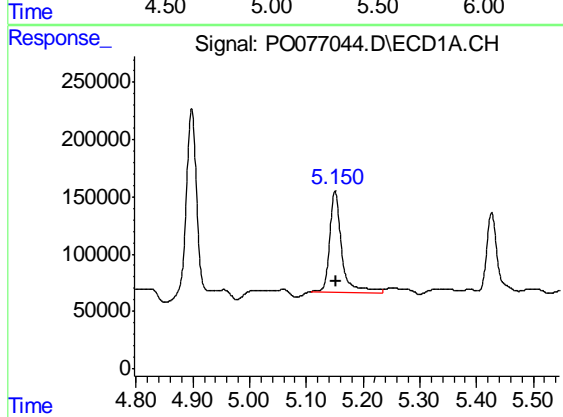
R.T.: 6.327 min  
 Delta R.T.: 0.014 min  
 Response: 123538  
 Conc: 43.31 ng/ml

Instrument :  
 ECD\_S  
 ClientSampled :  
 0124019



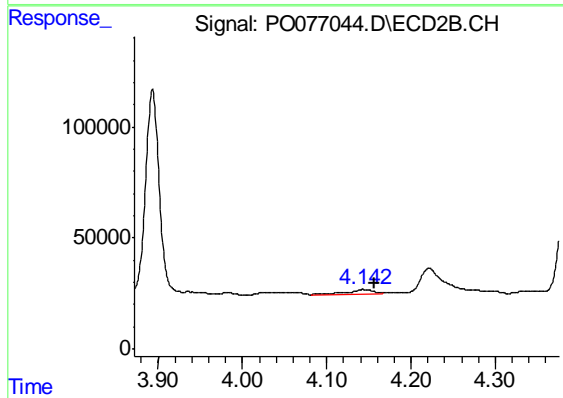
#5 AR-1016-3

R.T.: 0.000 min  
 Exp R.T. : 5.354 min  
 Response: 0  
 Conc: N.D.



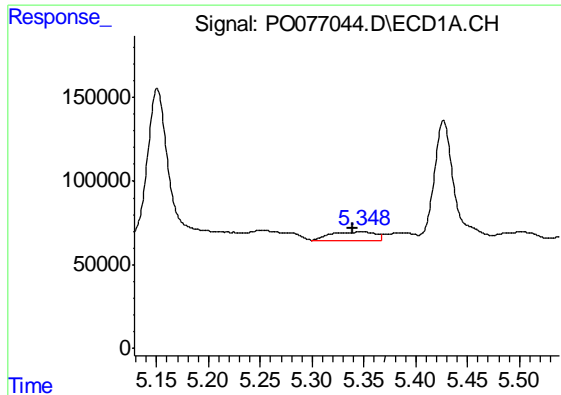
#8 AR-1221-1

R.T.: 5.150 min  
 Delta R.T.: -0.003 min  
 Response: 1318286  
 Conc: 1457.05 ng/ml



#8 AR-1221-1

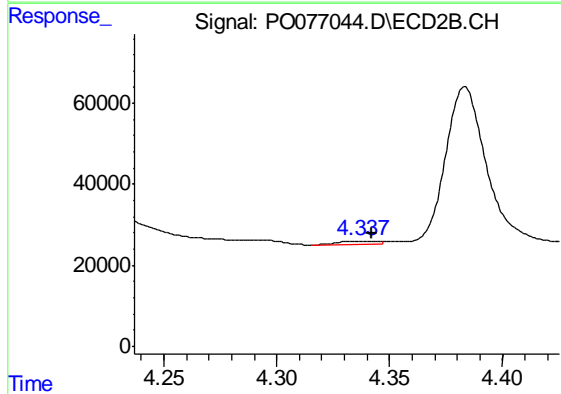
R.T.: 4.144 min  
 Delta R.T.: -0.013 min  
 Response: 47586  
 Conc: 96.64 ng/ml



#10 AR-1221-3

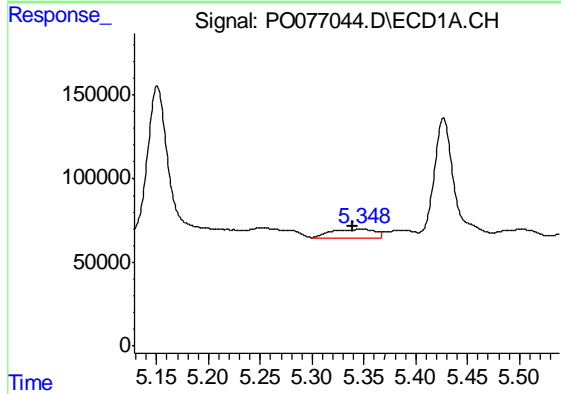
R.T.: 5.348 min  
 Delta R.T.: 0.009 min  
 Response: 151674  
 Conc: 73.40 ng/ml

Instrument :  
 ECD\_S  
 ClientSampled :  
 0124019



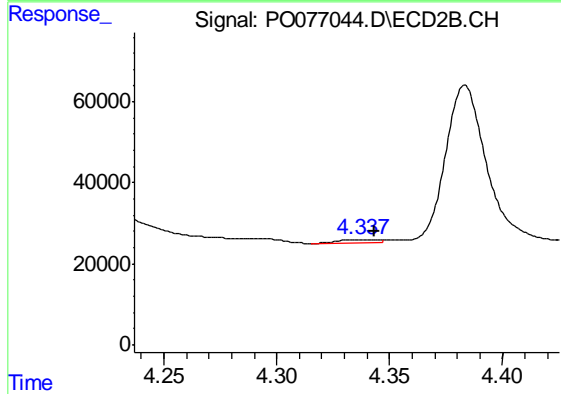
#10 AR-1221-3

R.T.: 4.337 min  
 Delta R.T.: -0.005 min  
 Response: 11201  
 Conc: 9.88 ng/ml



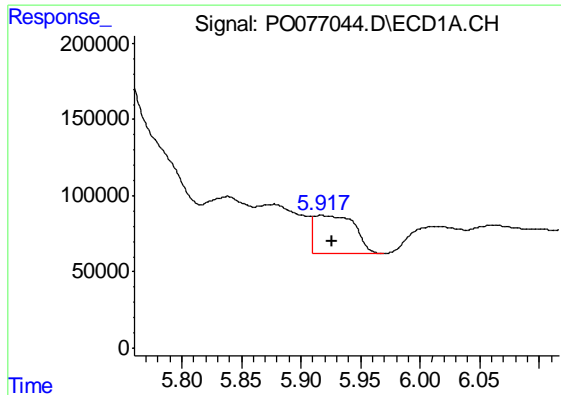
#11 AR-1232-1

R.T.: 5.348 min  
 Delta R.T.: 0.009 min  
 Response: 151674  
 Conc: 92.05 ng/ml



#11 AR-1232-1

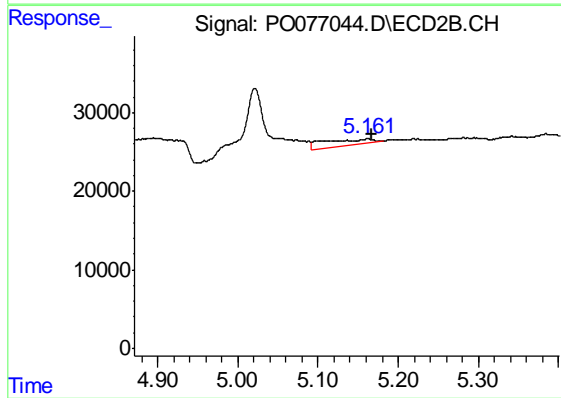
R.T.: 4.337 min  
 Delta R.T.: -0.007 min  
 Response: 11201  
 Conc: 12.12 ng/ml



#12 AR-1232-2

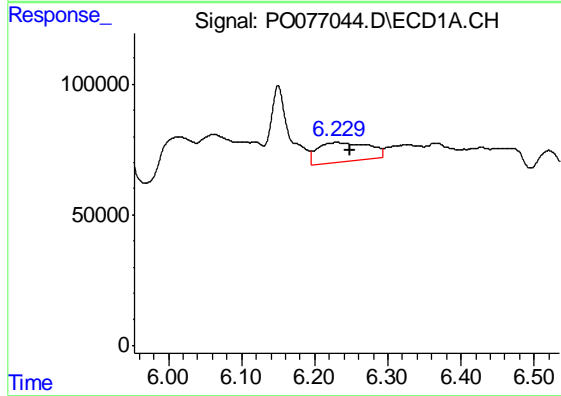
R.T.: 5.917 min  
 Delta R.T.: -0.010 min  
 Response: 596068  
 Conc: 659.76 ng/ml

Instrument :  
 ECD\_S  
 ClientSampleId :  
 0124019



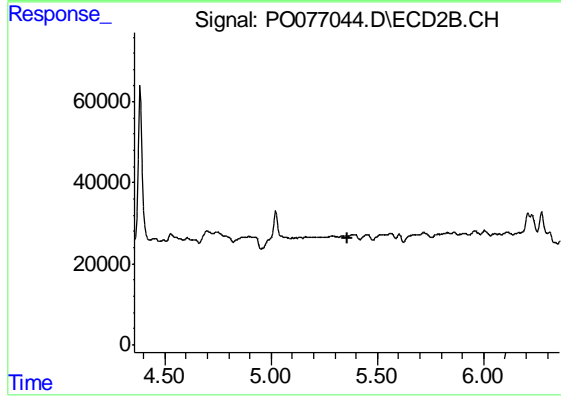
#12 AR-1232-2

R.T.: 5.162 min  
 Delta R.T.: -0.006 min  
 Response: 29938  
 Conc: 26.26 ng/ml



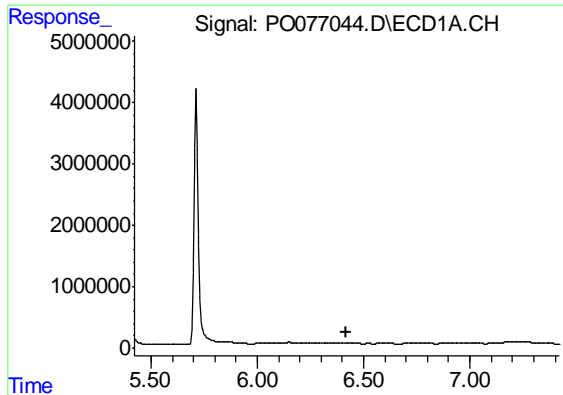
#13 AR-1232-3

R.T.: 6.230 min  
 Delta R.T.: -0.019 min  
 Response: 364259  
 Conc: 197.55 ng/ml



#13 AR-1232-3

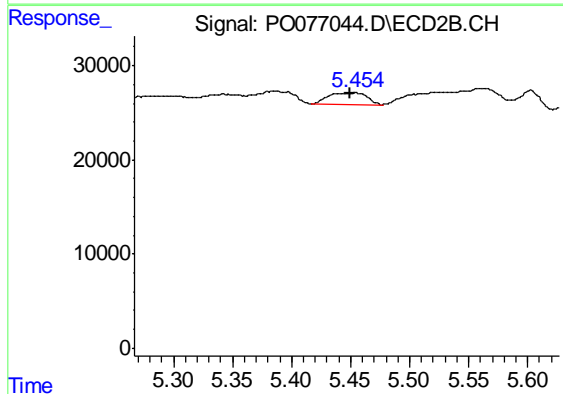
R.T.: 0.000 min  
 Exp R.T. : 5.357 min  
 Response: 0  
 Conc: N.D.



#14 AR-1232-4

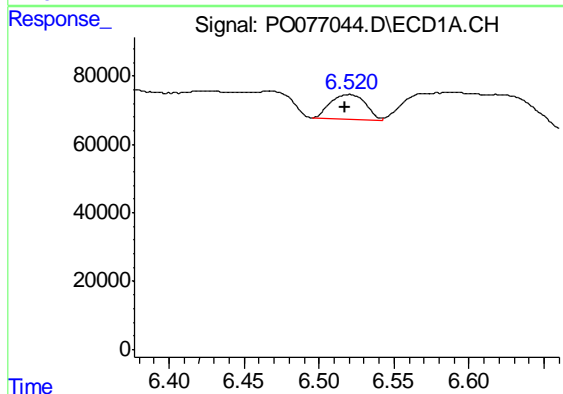
R.T.: 0.000 min  
 Exp R.T. : 6.421 min  
 Response: 0  
 Conc: N.D.

Instrument :  
 ECD\_S  
 ClientSampleId :  
 0124019



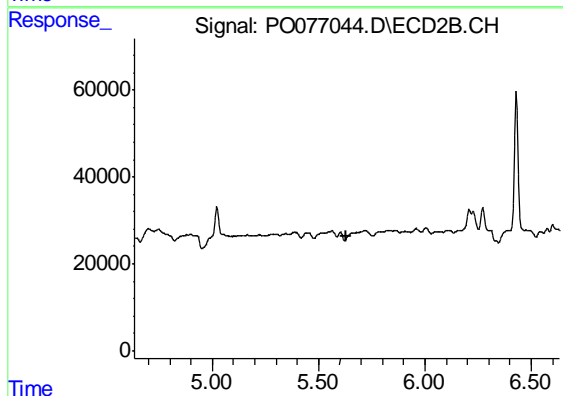
#14 AR-1232-4

R.T.: 5.455 min  
 Delta R.T.: 0.005 min  
 Response: 28210  
 Conc: 60.01 ng/ml



#15 AR-1232-5

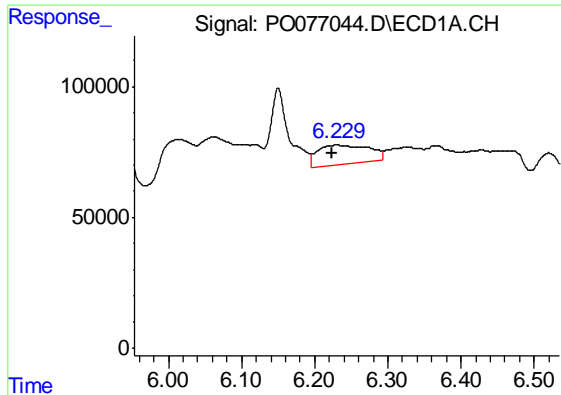
R.T.: 6.520 min  
 Delta R.T.: 0.003 min  
 Response: 117319  
 Conc: 205.10 ng/ml



#15 AR-1232-5

R.T.: 0.000 min  
 Exp R.T. : 5.633 min  
 Response: 0  
 Conc: N.D.

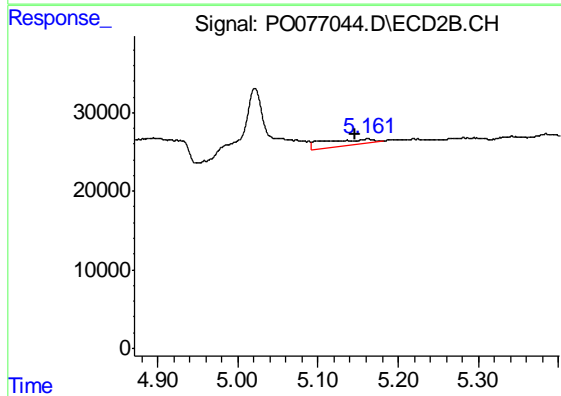




#16 AR-1242-1

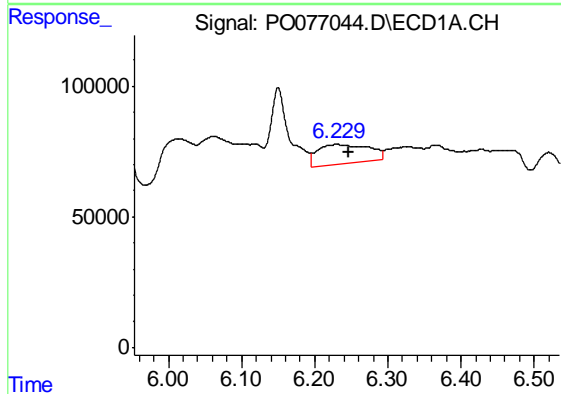
R.T.: 6.230 min  
 Delta R.T.: 0.006 min  
 Response: 364259  
 Conc: 172.57 ng/ml

Instrument :  
 ECD\_S  
 ClientSampled :  
 0124019



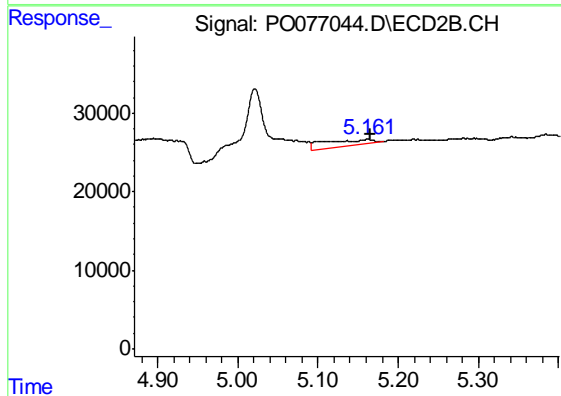
#16 AR-1242-1

R.T.: 5.162 min  
 Delta R.T.: 0.016 min  
 Response: 29938  
 Conc: 30.24 ng/ml



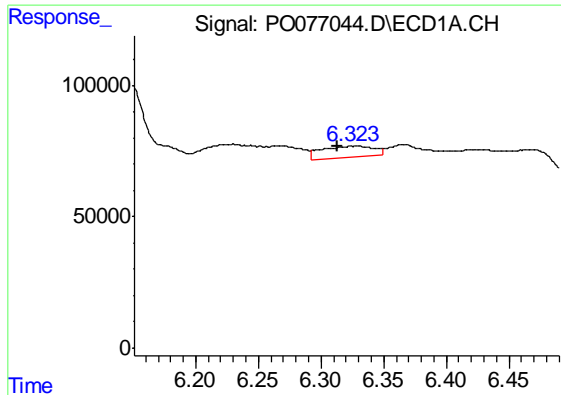
#17 AR-1242-2

R.T.: 6.230 min  
 Delta R.T.: -0.017 min  
 Response: 364259  
 Conc: 103.41 ng/ml



#17 AR-1242-2

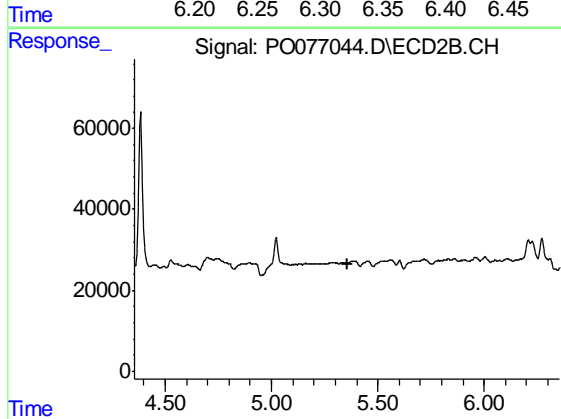
R.T.: 5.162 min  
 Delta R.T.: -0.004 min  
 Response: 29938  
 Conc: 14.06 ng/ml



#18 AR-1242-3

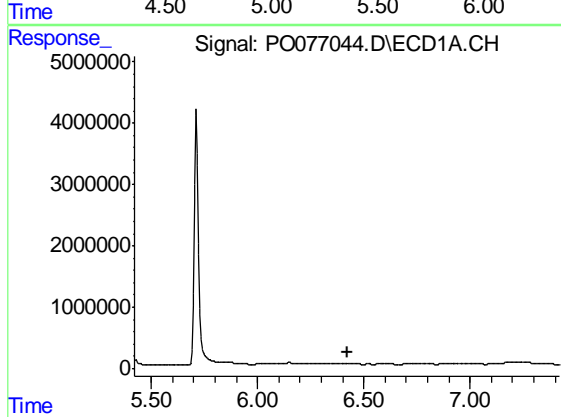
R.T.: 6.327 min  
 Delta R.T.: 0.014 min  
 Response: 123538  
 Conc: 55.63 ng/ml

Instrument :  
 ECD\_S  
 ClientSampled :  
 0124019



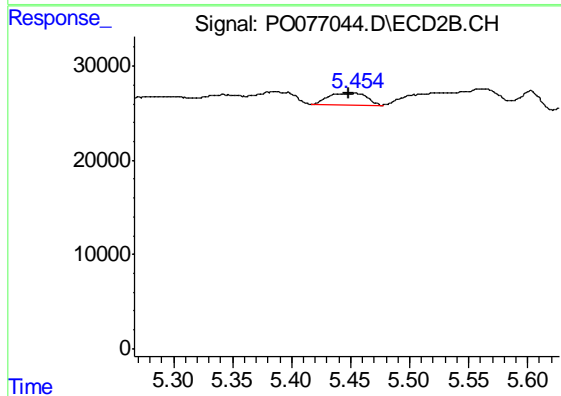
#18 AR-1242-3

R.T.: 0.000 min  
 Exp R.T. : 5.355 min  
 Response: 0  
 Conc: N.D.



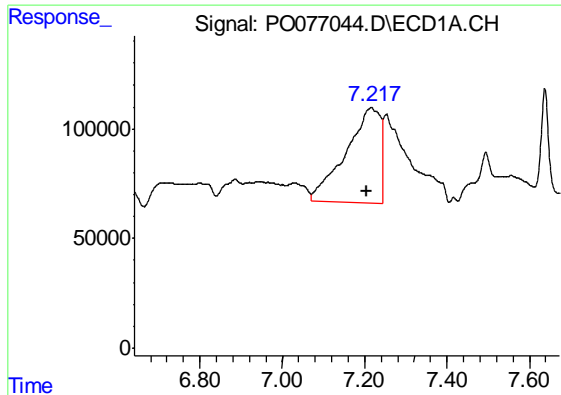
#19 AR-1242-4

R.T.: 0.000 min  
 Exp R.T. : 6.421 min  
 Response: 0  
 Conc: N.D.



#19 AR-1242-4

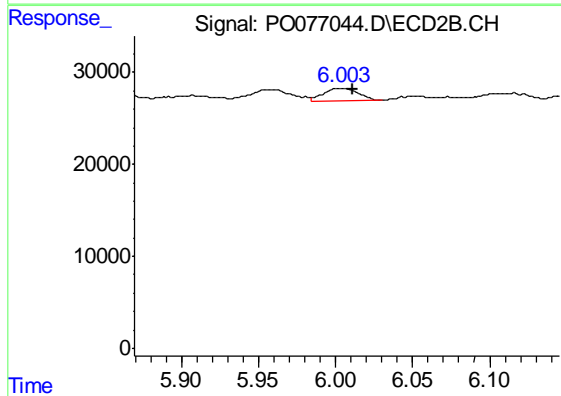
R.T.: 5.455 min  
 Delta R.T.: 0.006 min  
 Response: 28210  
 Conc: 29.17 ng/ml



#20 AR-1242-5

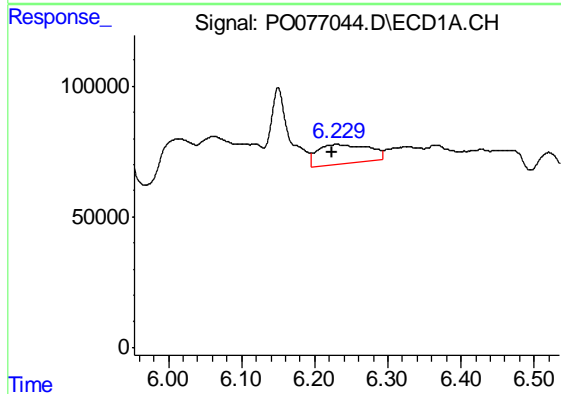
R.T.: 7.216 min  
 Delta R.T.: 0.012 min  
 Response: 2519805  
 Conc: 1287.25 ng/ml

Instrument :  
 ECD\_S  
 ClientSampleId :  
 0124019



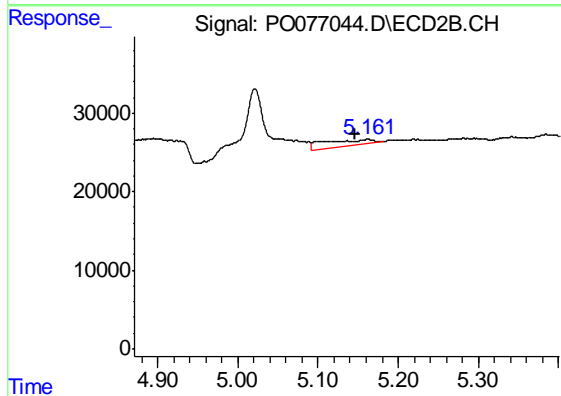
#20 AR-1242-5

R.T.: 6.004 min  
 Delta R.T.: -0.006 min  
 Response: 21056  
 Conc: 17.46 ng/ml



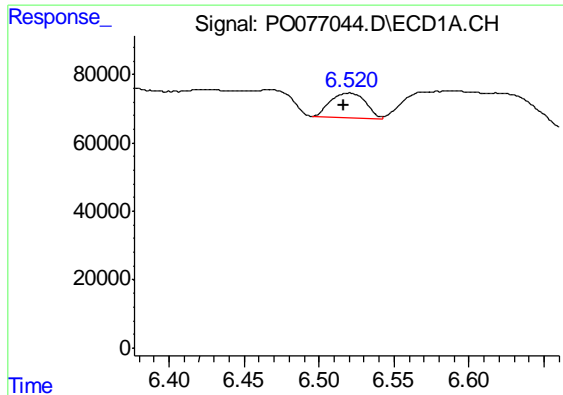
#21 AR-1248-1

R.T.: 6.230 min  
 Delta R.T.: 0.007 min  
 Response: 364259  
 Conc: 239.80 ng/ml



#21 AR-1248-1

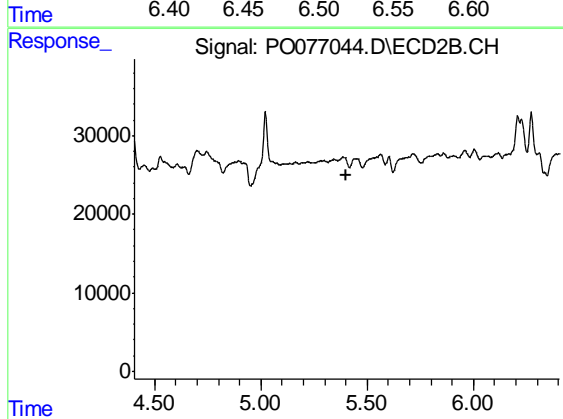
R.T.: 5.162 min  
 Delta R.T.: 0.015 min  
 Response: 29938  
 Conc: 39.75 ng/ml



#22 AR-1248-2

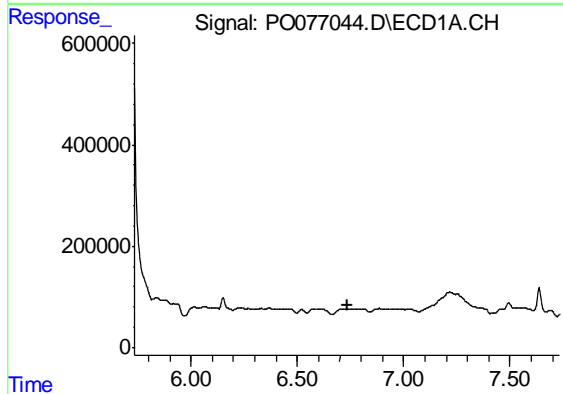
R.T.: 6.520 min  
 Delta R.T.: 0.003 min  
 Response: 117319  
 Conc: 50.68 ng/ml

Instrument :  
 ECD\_S  
 ClientSampled :  
 0124019



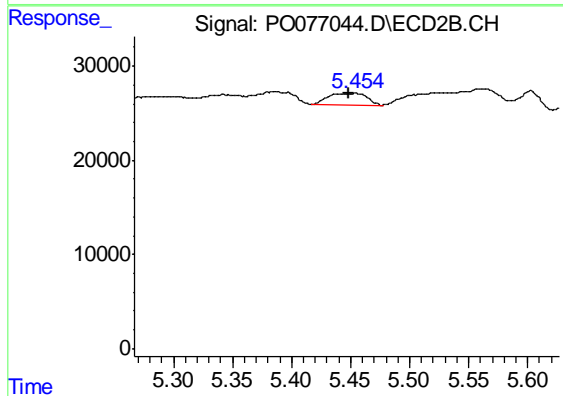
#22 AR-1248-2

R.T.: 0.000 min  
 Exp R.T. : 5.405 min  
 Response: 0  
 Conc: N.D.



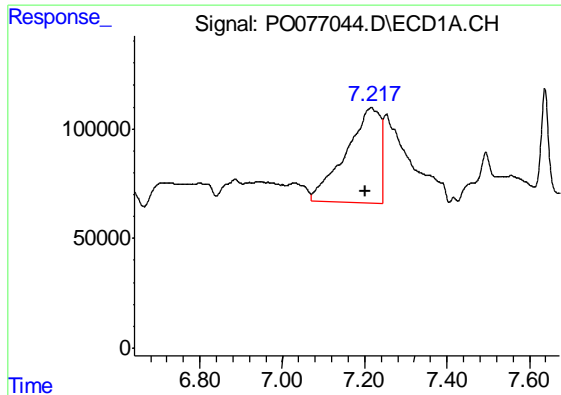
#23 AR-1248-3

R.T.: 0.000 min  
 Exp R.T. : 6.734 min  
 Response: 0  
 Conc: N.D.



#23 AR-1248-3

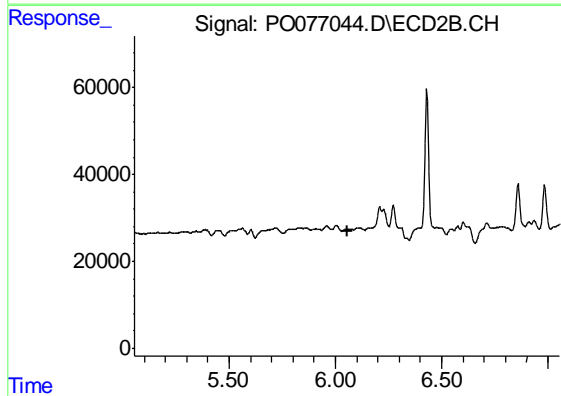
R.T.: 5.455 min  
 Delta R.T.: 0.006 min  
 Response: 28210  
 Conc: 19.38 ng/ml



#25 AR-1248-5

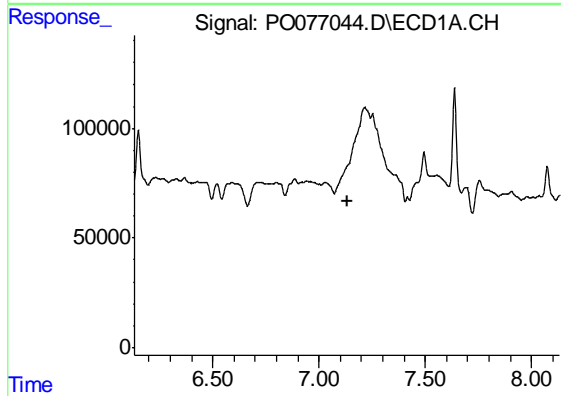
R.T.: 7.216 min  
 Delta R.T.: 0.014 min  
 Response: 2519805  
 Conc: 731.12 ng/ml

Instrument :  
 ECD\_S  
 ClientSampleId :  
 0124019



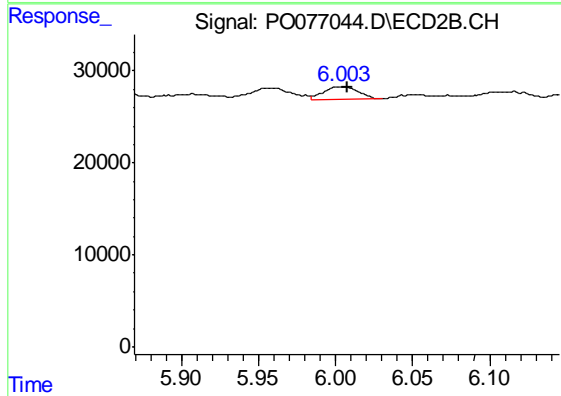
#25 AR-1248-5

R.T.: 0.000 min  
 Exp R.T. : 6.054 min  
 Response: 0  
 Conc: N.D.



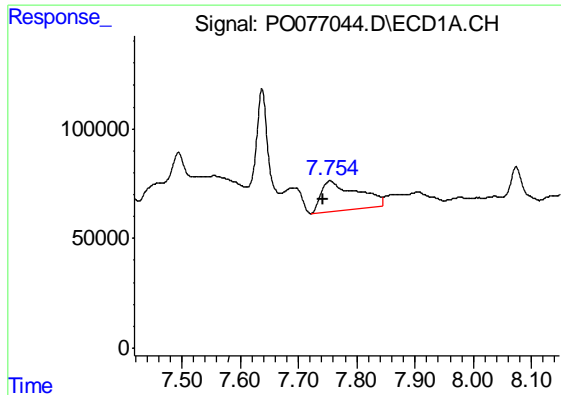
#26 AR-1254-1

R.T.: 0.000 min  
 Exp R.T. : 7.132 min  
 Response: 0  
 Conc: N.D.



#26 AR-1254-1

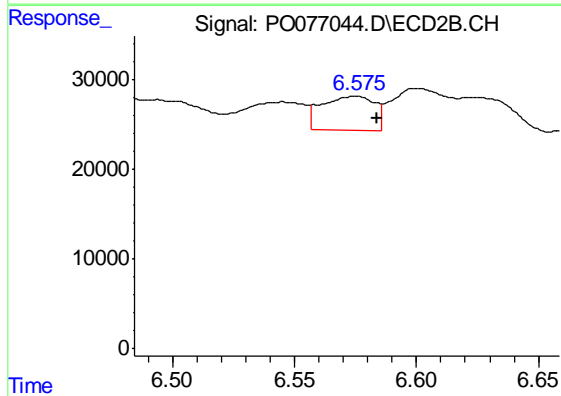
R.T.: 6.004 min  
 Delta R.T.: -0.004 min  
 Response: 21056  
 Conc: 8.03 ng/ml



#28 AR-1254-3

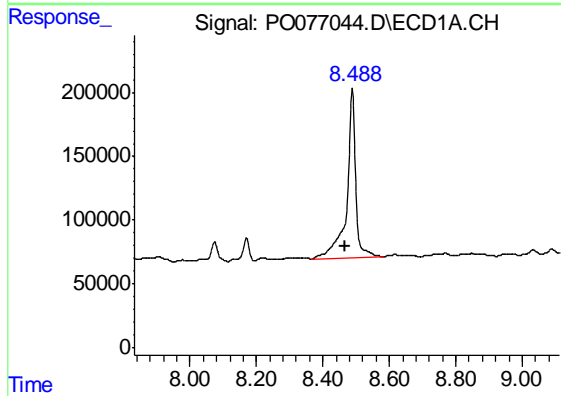
R.T.: 7.754 min  
 Delta R.T.: 0.012 min  
 Response: 596114  
 Conc: 108.18 ng/ml

Instrument :  
 ECD\_S  
 ClientSampleId :  
 0124019



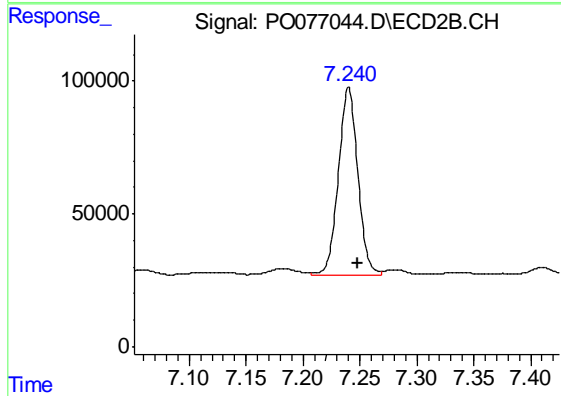
#28 AR-1254-3

R.T.: 6.575 min  
 Delta R.T.: -0.008 min  
 Response: 57681  
 Conc: 16.32 ng/ml



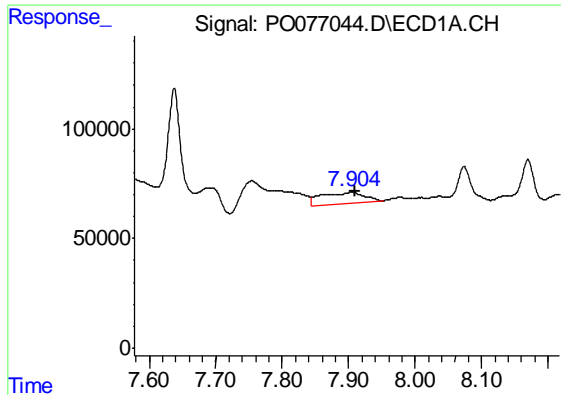
#30 AR-1254-5

R.T.: 8.488 min  
 Delta R.T.: 0.021 min  
 Response: 2465869  
 Conc: 560.66 ng/ml



#30 AR-1254-5

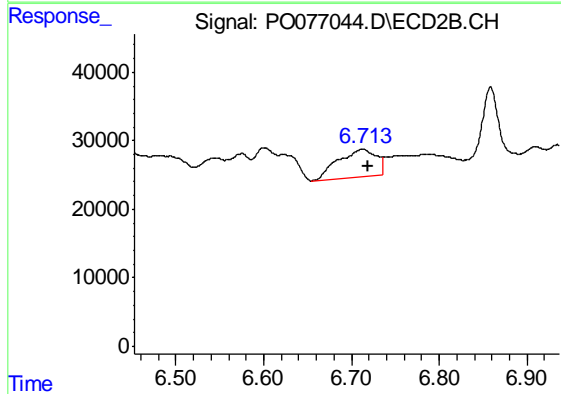
R.T.: 7.240 min  
 Delta R.T.: -0.008 min  
 Response: 840472  
 Conc: 257.81 ng/ml



#31 AR-1260-1

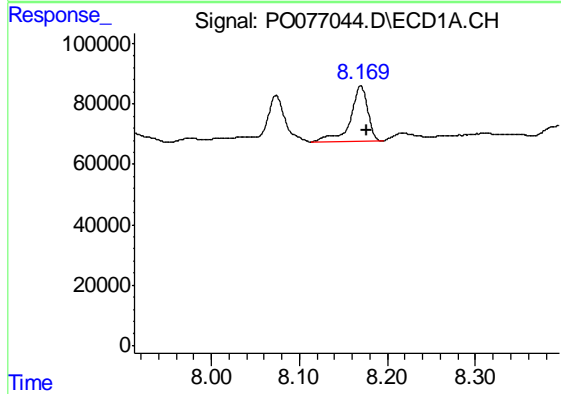
R.T.: 7.905 min  
 Delta R.T.: -0.004 min  
 Response: 232803  
 Conc: 58.13 ng/ml

Instrument :  
 ECD\_S  
 ClientSampleId :  
 0124019



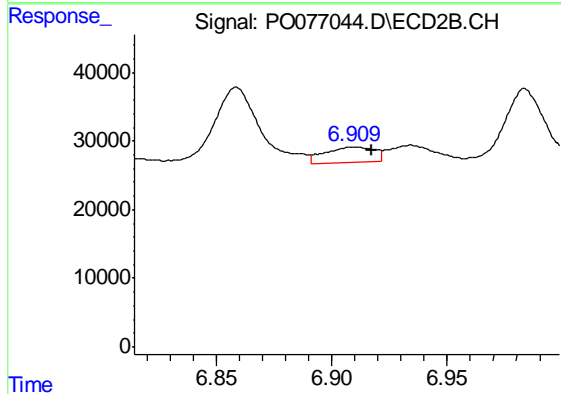
#31 AR-1260-1

R.T.: 6.713 min  
 Delta R.T.: -0.006 min  
 Response: 122331  
 Conc: 46.82 ng/ml



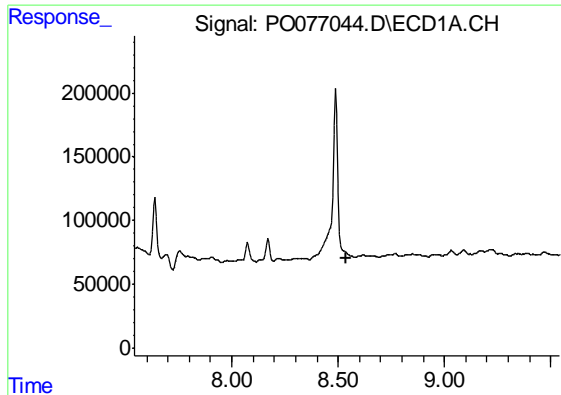
#32 AR-1260-2

R.T.: 8.170 min  
 Delta R.T.: -0.007 min  
 Response: 252123  
 Conc: 50.90 ng/ml



#32 AR-1260-2

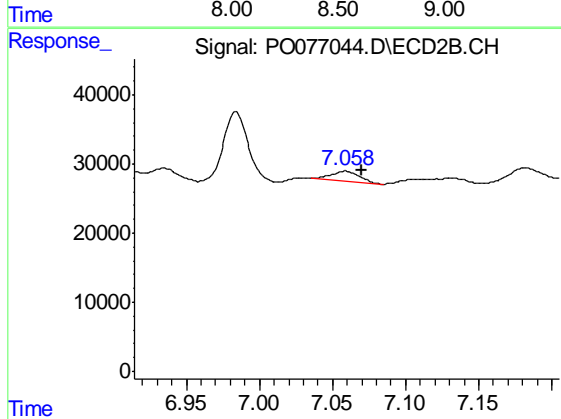
R.T.: 6.910 min  
 Delta R.T.: -0.008 min  
 Response: 33435  
 Conc: 10.59 ng/ml



#33 AR-1260-3

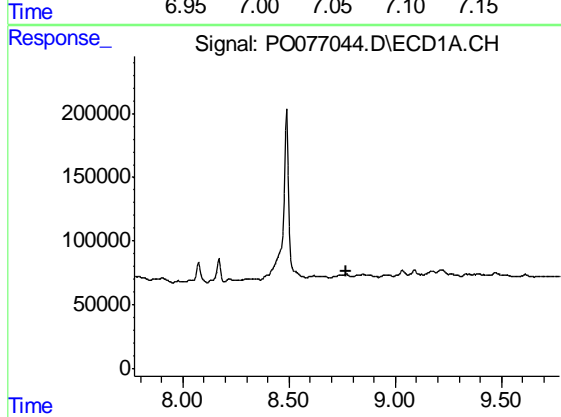
R.T.: 0.000 min  
 Exp R.T. : 8.541 min  
 Response: 0  
 Conc: N.D.

Instrument :  
 ECD\_S  
 ClientSampleId :  
 0124019



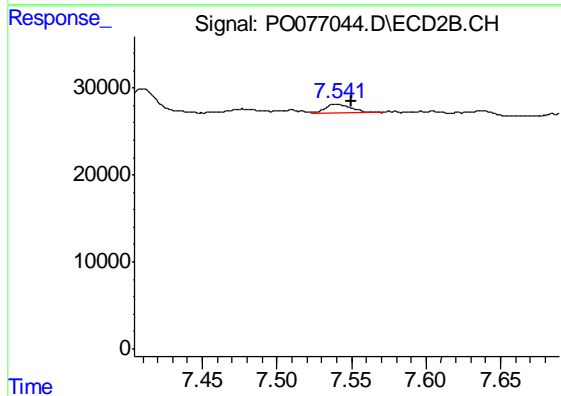
#33 AR-1260-3

R.T.: 7.059 min  
 Delta R.T.: -0.011 min  
 Response: 19815  
 Conc: 6.78 ng/ml



#34 AR-1260-4

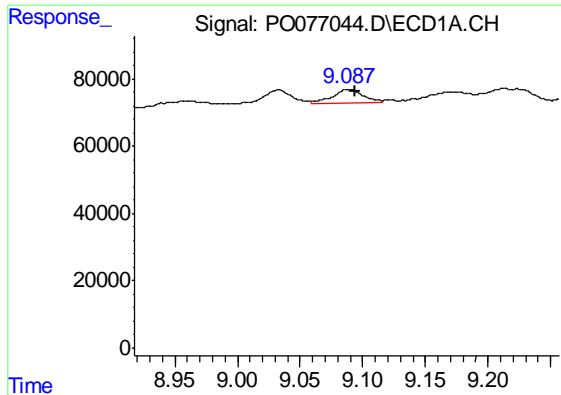
R.T.: 0.000 min  
 Exp R.T. : 8.772 min  
 Response: 0  
 Conc: N.D.



#34 AR-1260-4

R.T.: 7.541 min  
 Delta R.T.: -0.009 min  
 Response: 12008  
 Conc: 4.80 ng/ml

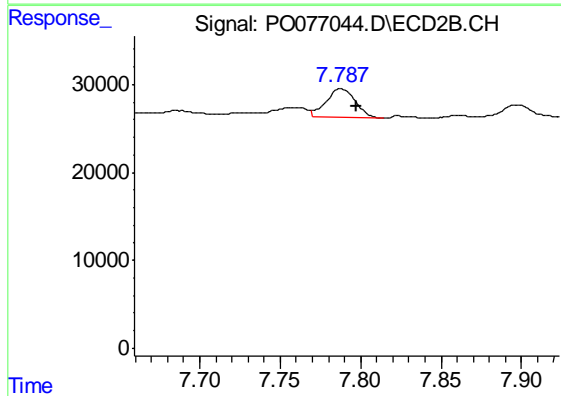




#35 AR-1260-5

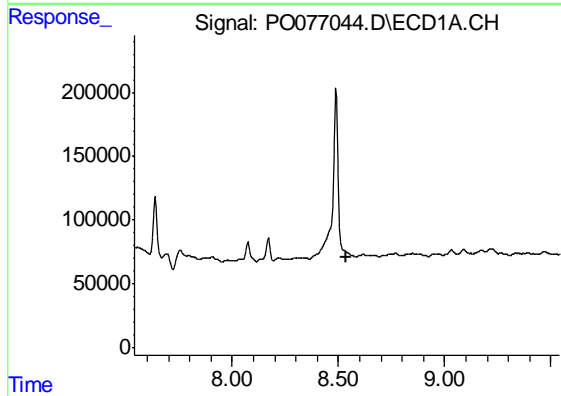
R.T.: 9.089 min  
 Delta R.T.: -0.005 min  
 Response: 67524  
 Conc: 7.92 ng/ml

Instrument :  
 ECD\_S  
 ClientSampleId :  
 0124019



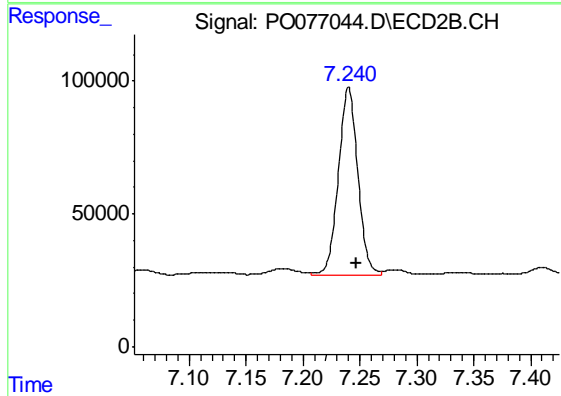
#35 AR-1260-5

R.T.: 7.788 min  
 Delta R.T.: -0.010 min  
 Response: 41596  
 Conc: 7.05 ng/ml



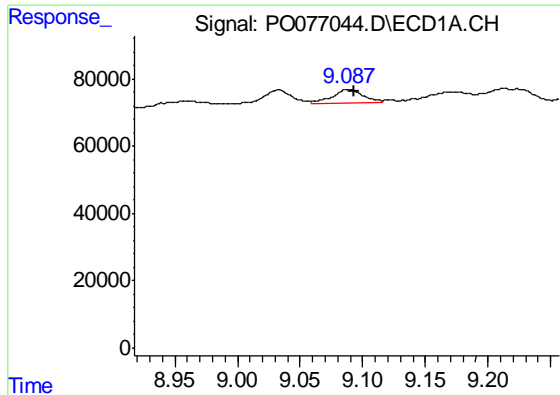
#36 AR-1262-1

R.T.: 0.000 min  
 Exp R.T. : 8.540 min  
 Response: 0  
 Conc: N.D.



#36 AR-1262-1

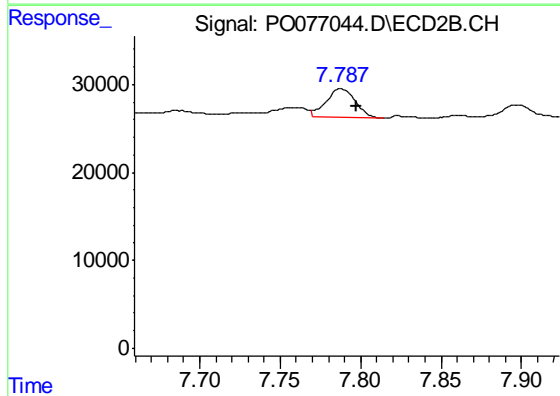
R.T.: 7.240 min  
 Delta R.T.: -0.007 min  
 Response: 840472  
 Conc: 474.82 ng/ml



#37 AR-1262-2

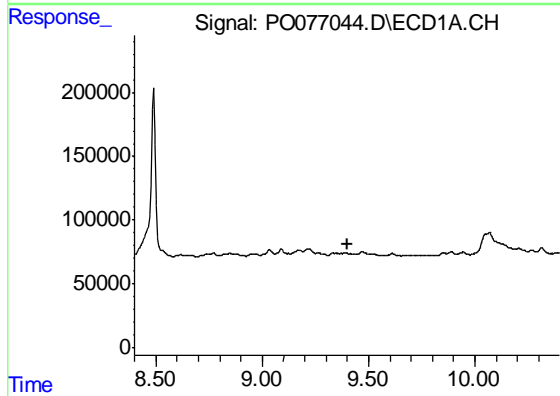
R.T.: 9.089 min  
 Delta R.T.: -0.004 min  
 Response: 67524  
 Conc: 6.90 ng/ml

Instrument :  
 ECD\_S  
 ClientSampleId :  
 0124019



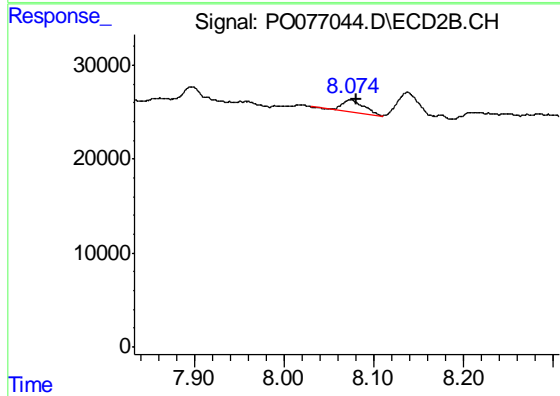
#37 AR-1262-2

R.T.: 7.788 min  
 Delta R.T.: -0.009 min  
 Response: 41596  
 Conc: 6.87 ng/ml



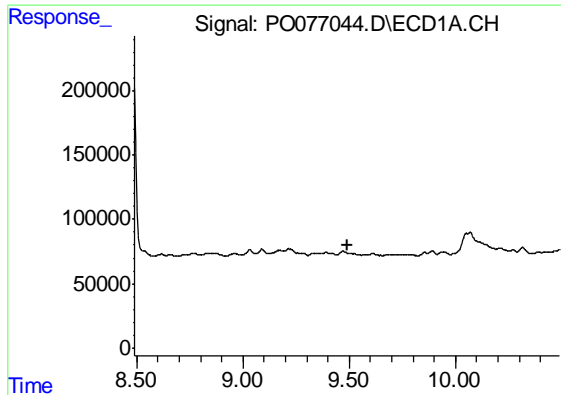
#38 AR-1262-3

R.T.: 0.000 min  
 Exp R.T. : 9.398 min  
 Response: 0  
 Conc: N.D.



#38 AR-1262-3

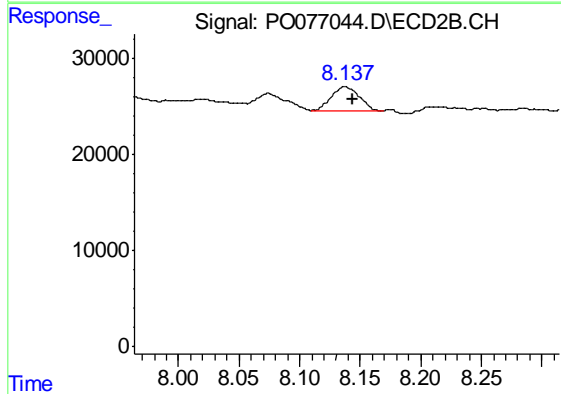
R.T.: 8.074 min  
 Delta R.T.: -0.006 min  
 Response: 22130  
 Conc: 8.80 ng/ml



#39 AR-1262-4

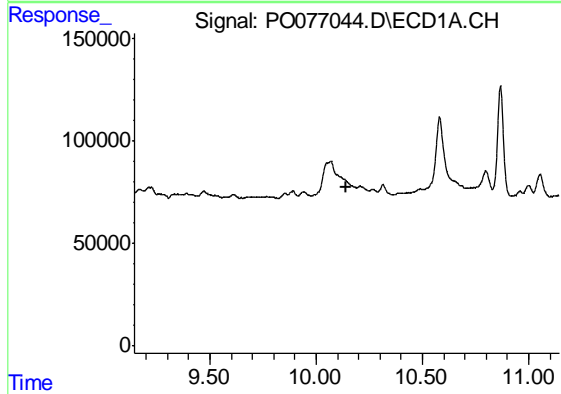
R.T.: 0.000 min  
 Exp R.T. : 9.489 min  
 Response: 0  
 Conc: N.D.

Instrument :  
 ECD\_S  
 ClientSampleId :  
 0124019



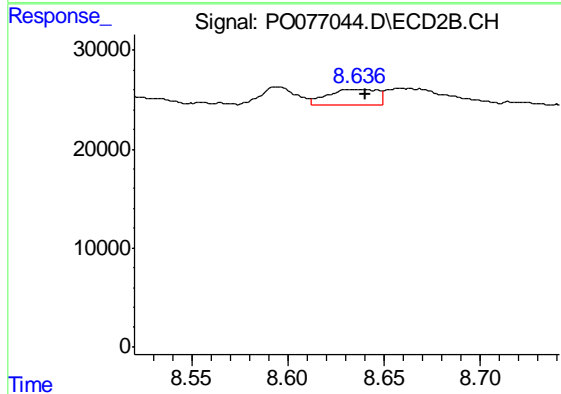
#39 AR-1262-4

R.T.: 8.137 min  
 Delta R.T.: -0.007 min  
 Response: 39522  
 Conc: 8.72 ng/ml



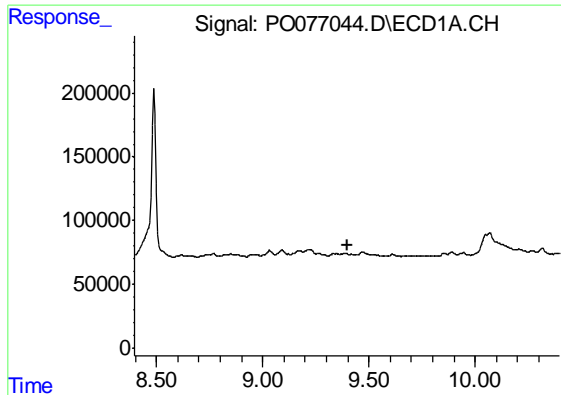
#40 AR-1262-5

R.T.: 0.000 min  
 Exp R.T. : 10.144 min  
 Response: 0  
 Conc: N.D.



#40 AR-1262-5

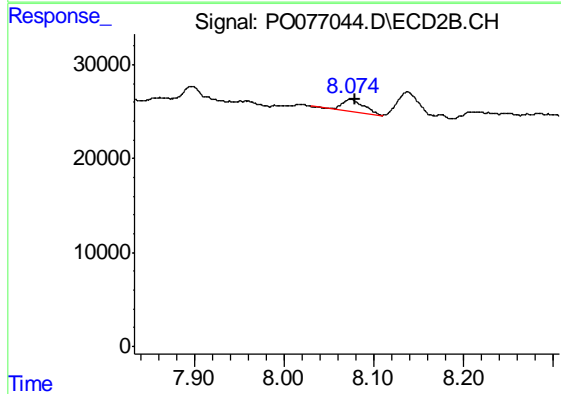
R.T.: 8.636 min  
 Delta R.T.: -0.004 min  
 Response: 29267  
 Conc: 14.78 ng/ml



#41 AR-1268-1

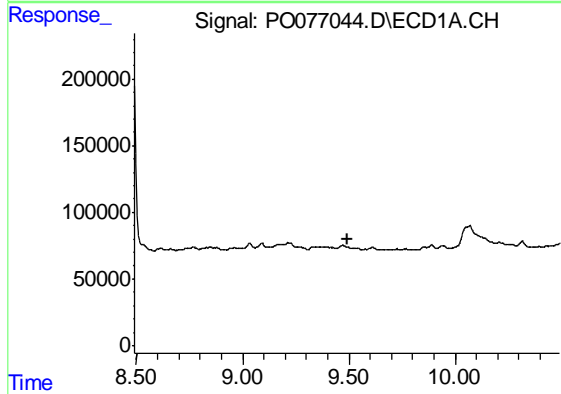
R.T.: 0.000 min  
 Exp R.T. : 9.397 min  
 Response: 0  
 Conc: N.D.

Instrument :  
 ECD\_S  
 ClientSampleId :  
 0124019



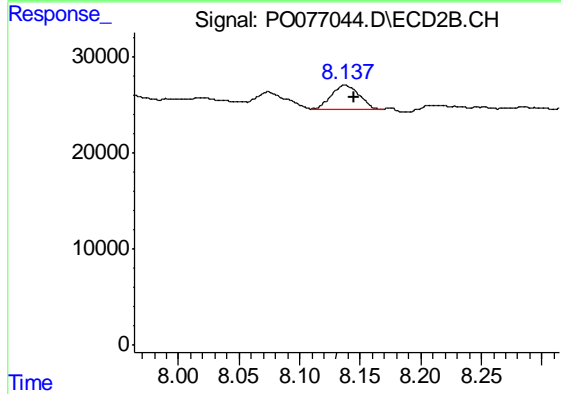
#41 AR-1268-1

R.T.: 8.074 min  
 Delta R.T.: -0.005 min  
 Response: 22130  
 Conc: 3.01 ng/ml



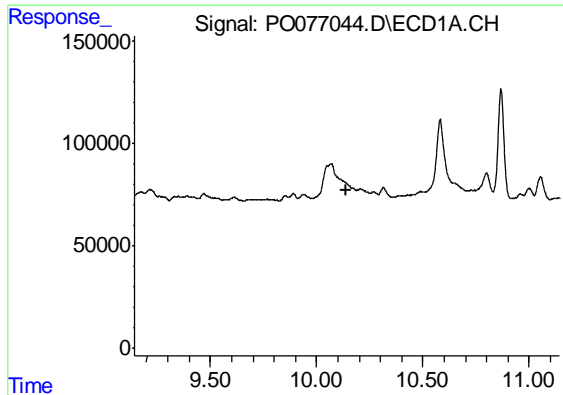
#42 AR-1268-2

R.T.: 0.000 min  
 Exp R.T. : 9.491 min  
 Response: 0  
 Conc: N.D.



#42 AR-1268-2

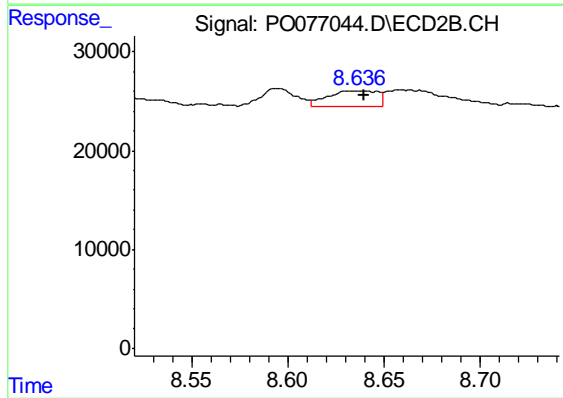
R.T.: 8.137 min  
 Delta R.T.: -0.007 min  
 Response: 39522  
 Conc: 5.92 ng/ml



#44 AR-1268-4

R.T.: 0.000 min  
 Exp R.T. : 10.142 min  
 Response: 0  
 Conc: N.D.

Instrument :  
 ECD\_S  
 ClientSampleId :  
 0124019



#44 AR-1268-4

R.T.: 8.636 min  
 Delta R.T.: -0.003 min  
 Response: 29267  
 Conc: 13.25 ng/ml