

Data Path : Z:\pestpcbsrv\HPCHEM1\ECD_S\Data\PS041720\
 Data File : PS009853.D
 Signal(s) : Signal #1: ECD1A.ch Signal #2: ECD2B.ch
 Acq On : 17 Apr 2020 23:17
 Operator : DD\AJ
 Sample : L2287-05
 Misc :
 ALS Vial : 33 Sample Multiplier: 1

Integration File signal 1: autoint1.e
 Integration File signal 2: autoint2.e
 Quant Time: Apr 21 01:59:37 2020
 Quant Method : Z:\pestpcbsrv\HPCHEM1\ECD_S\Method\PS040820.M
 Quant Title : 8080.M
 QLast Update : Thu Apr 09 05:27:48 2020
 Response via : Initial Calibration
 Integrator: ChemStation

Volume Inj. : 2 µl
 Signal #1 Phase : Rtx-CLPesticides Signal #2 Phase: Rtx-CLPesticides2
 Signal #1 Info : 30M x 0.32mm x0.5 Signal #2 Info : 30M x 0.32mm x 0.25µm

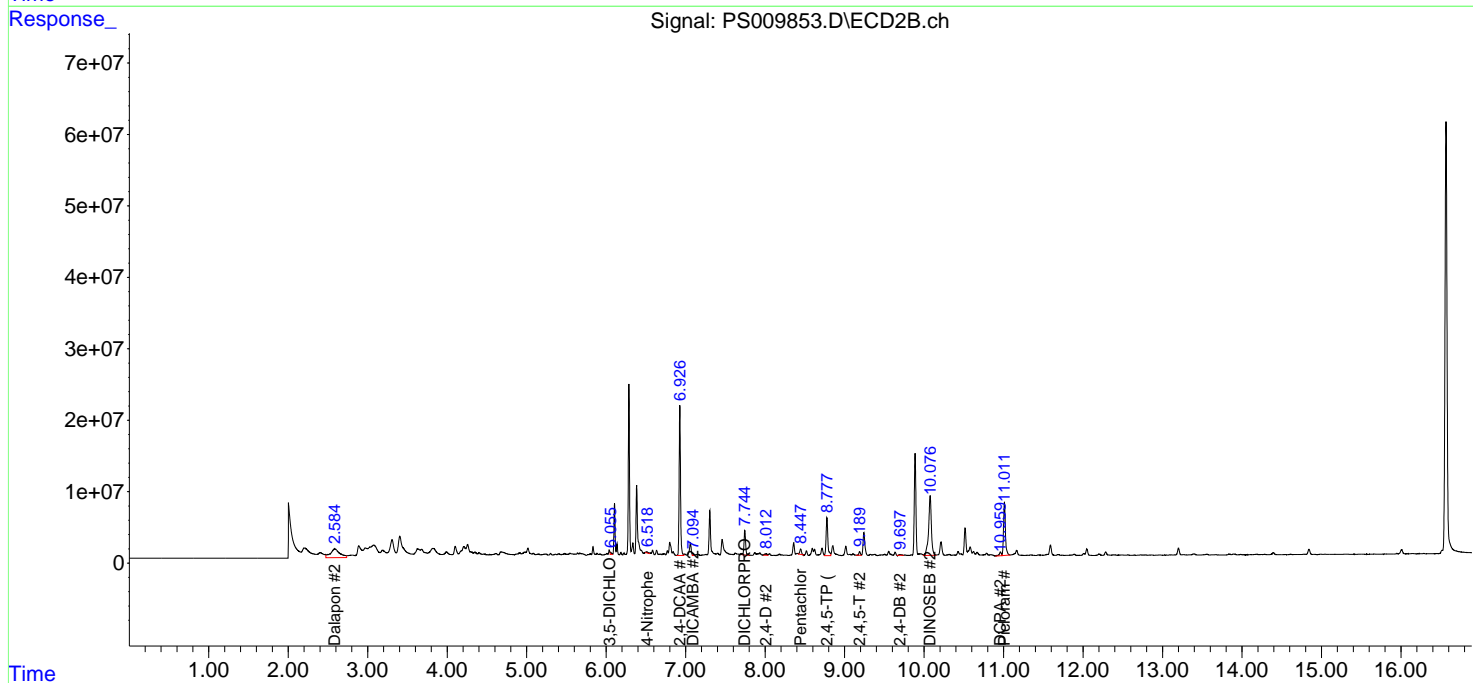
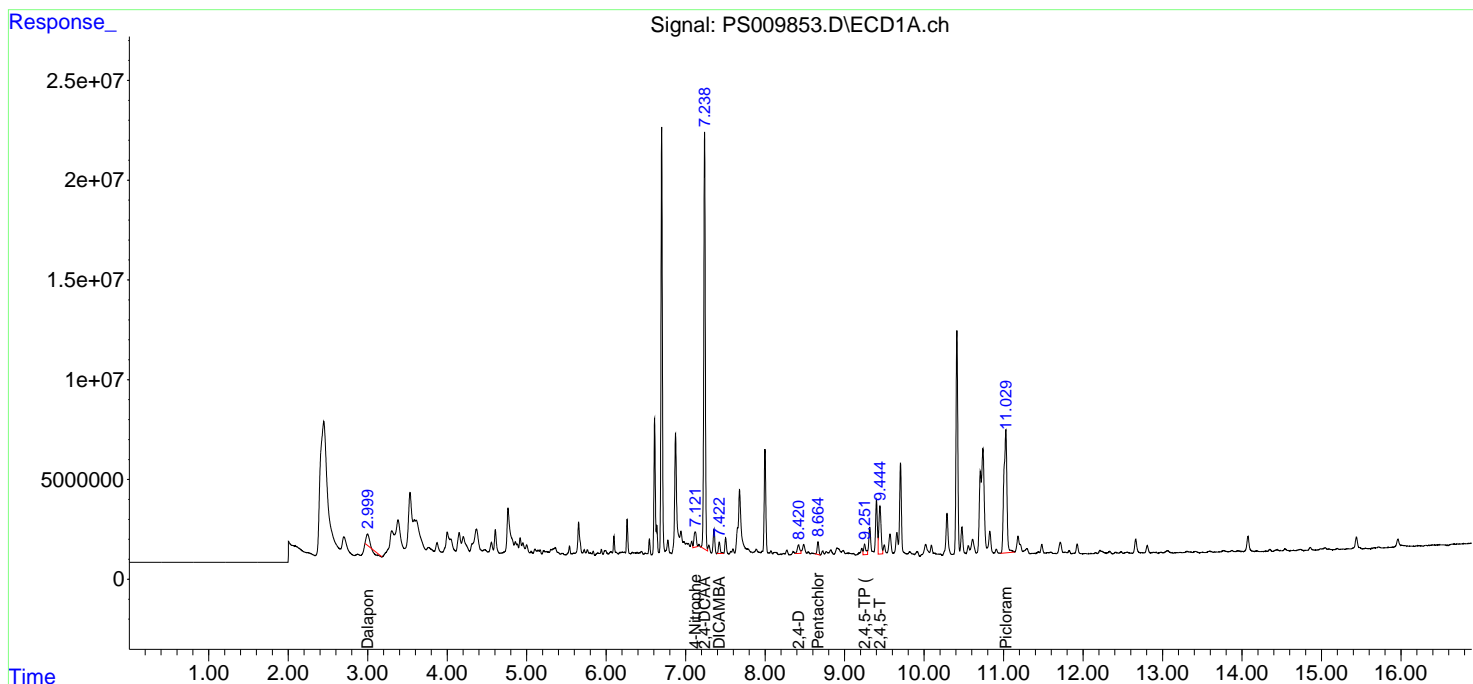
Compound	RT#1	RT#2	Resp#1	Resp#2	ng/ml	ng/ml
System Monitoring Compounds						
4) S 2,4-DCAA	7.238	6.927	279.8E6	253.0E6	463.308	510.769
Target Compounds						
1) T Dalapon	2.998	2.585	10141007	102.2E6	13.386	142.698 #
2) T 3,5-DICHL...	0.000	6.055	0	3291279	N.D.	4.430
3) T 4-Nitroph...	7.120	6.517	15522396	2397825	55.797	7.896 #
5) T DICAMBA	7.423	7.094	9042138	2821633	4.014	1.419 #
6) T MCPP	0.000	7.211	0	594839	N.D.	<MDL
7) T MCPA	0.000	7.400	0	1364520	N.D.	<MDL
8) T DICHLORPROP	0.000	7.744	0	47981550	N.D.	95.331
9) T 2,4-D	8.420	8.013	9122912	4156667	15.888	6.937 #
10) T Pentachlo...	8.665	8.447	9245985	11396538	1.244	1.826 #
11) T 2,4,5-TP ...	9.252	8.778	10318034	82543029	3.486	31.562 #
12) T 2,4,5-T	9.445	9.189	46210723	6675647	16.666	2.558 #
13) T 2,4-DB	0.000	9.697	0	2027684	N.D.	5.719
14) T DINOSEB	0.000	10.076	0	205.2E6	N.D.	104.212
15) T Picloram	11.029	11.011	163.9E6	122.1E6	52.917	35.890 #
16) T DCPA	0.000	10.960	0	9454472	N.D.	2.820

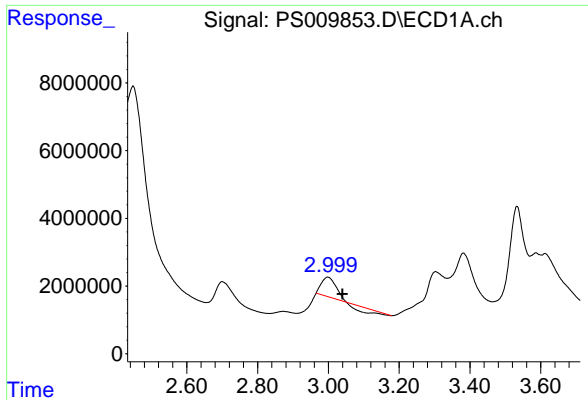
(f)=RT Delta > 1/2 Window (#)=Amounts differ by > 25% (m)=manual int.

Data Path : Z:\pestpcbsrv\HPCHEM1\ECD_S\Data\PS041720\
 Data File : PS009853.D
 Signal(s) : Signal #1: ECD1A.ch Signal #2: ECD2B.ch
 Acq On : 17 Apr 2020 23:17
 Operator : DD\AJ
 Sample : L2287-05
 Misc :
 ALS Vial : 33 Sample Multiplier: 1

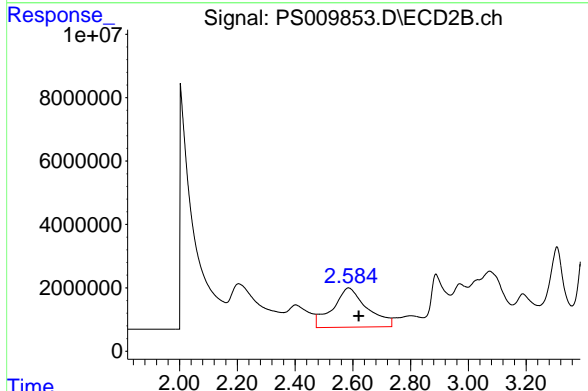
Integration File signal 1: autoint1.e
 Integration File signal 2: autoint2.e
 Quant Time: Apr 21 01:59:37 2020
 Quant Method : Z:\pestpcbsrv\HPCHEM1\ECD_S\Method\PS040820.M
 Quant Title : 8080.M
 QLast Update : Thu Apr 09 05:27:48 2020
 Response via : Initial Calibration
 Integrator: ChemStation

Volume Inj. : 2 µl
 Signal #1 Phase : Rtx-CLPesticides Signal #2 Phase: Rtx-CLPesticides2
 Signal #1 Info : 30M x 0.32mm x0.5 Signal #2 Info : 30M x 0.32mm x 0.25µm

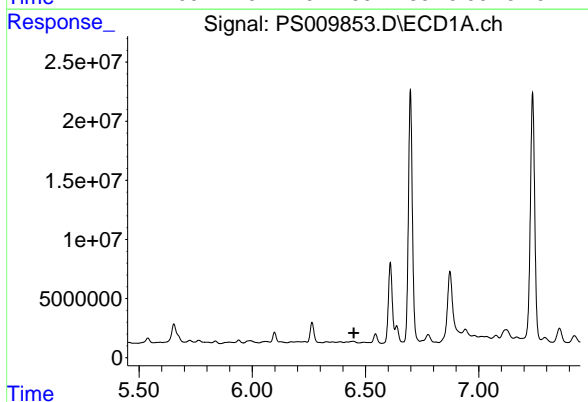




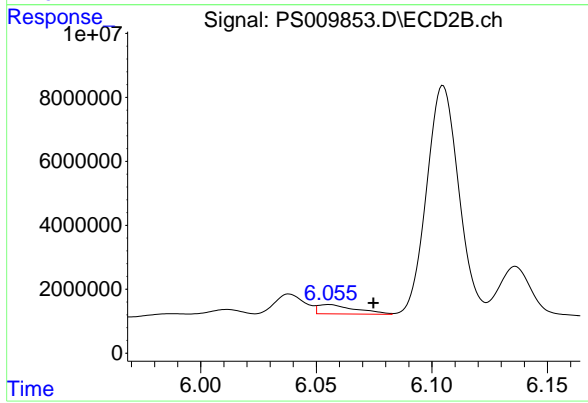
#1 Dalapon
 R.T.: 2.998 min
 Delta R.T.: -0.042 min
 Response: 10141007
 Conc: 13.39 ng/ml



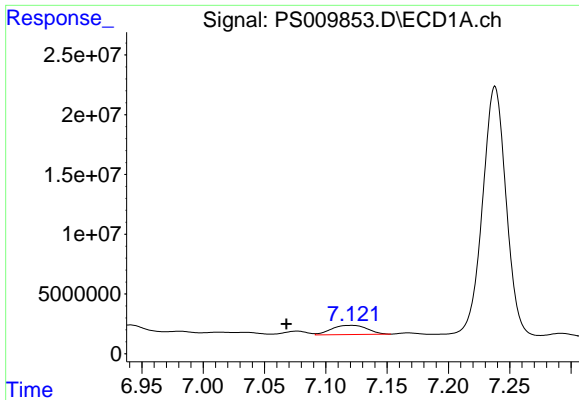
#1 Dalapon
 R.T.: 2.585 min
 Delta R.T.: -0.036 min
 Response: 102156018
 Conc: 142.70 ng/ml



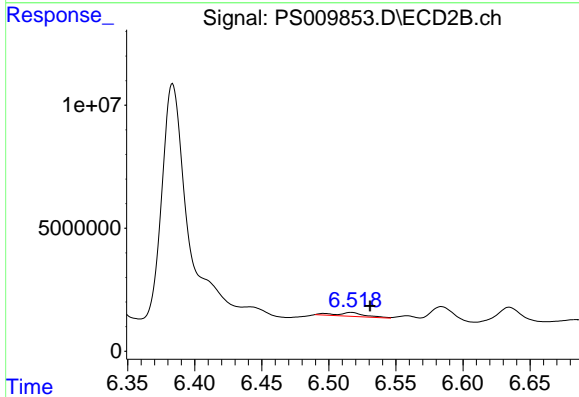
#2 3,5-DICHLOROBENZOIC ACID
 R.T.: 0.000 min
 Exp R.T. : 6.448 min
 Response: 0
 Conc: N.D.



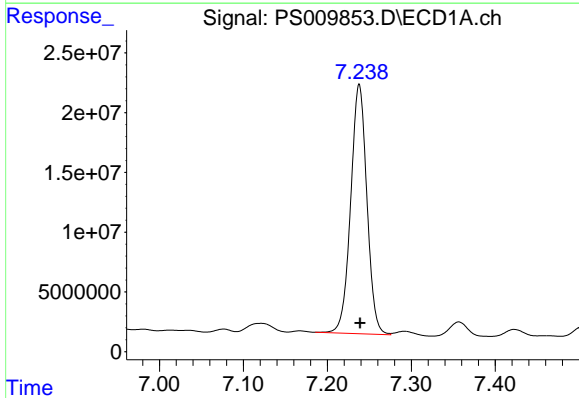
#2 3,5-DICHLOROBENZOIC ACID
 R.T.: 6.055 min
 Delta R.T.: -0.019 min
 Response: 3291279
 Conc: 4.43 ng/ml



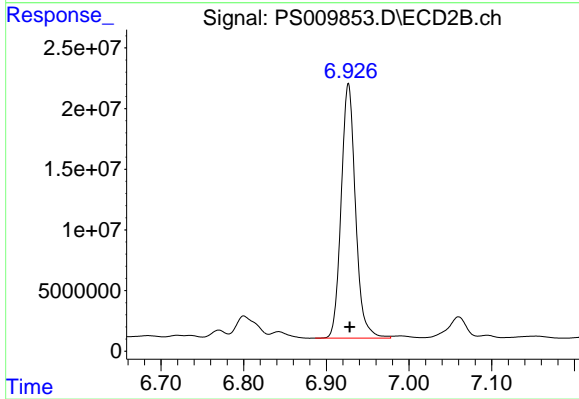
#3 4-Nitrophenol
R.T.: 7.120 min
Delta R.T.: 0.053 min
Response: 15522396
Conc: 55.80 ng/ml



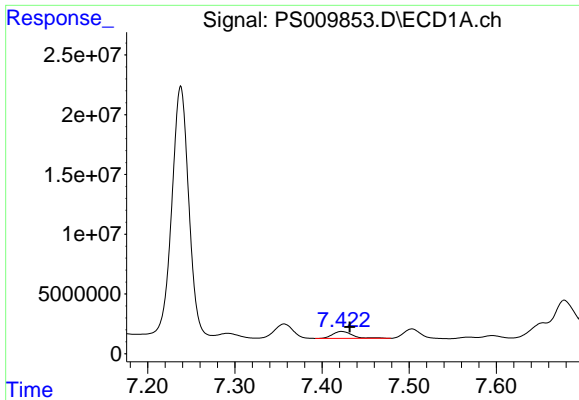
#3 4-Nitrophenol
R.T.: 6.517 min
Delta R.T.: -0.014 min
Response: 2397825
Conc: 7.90 ng/ml



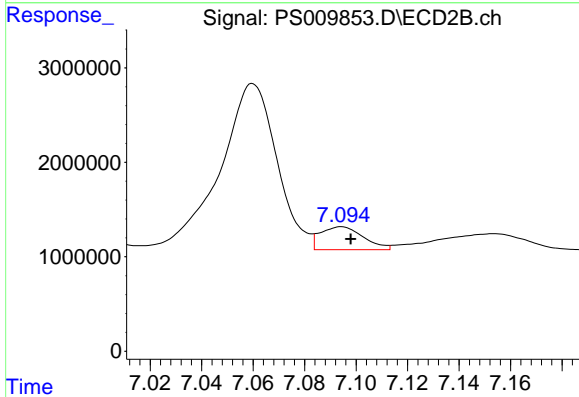
#4 2,4-DCAA
R.T.: 7.238 min
Delta R.T.: -0.001 min
Response: 279752381
Conc: 463.31 ng/ml



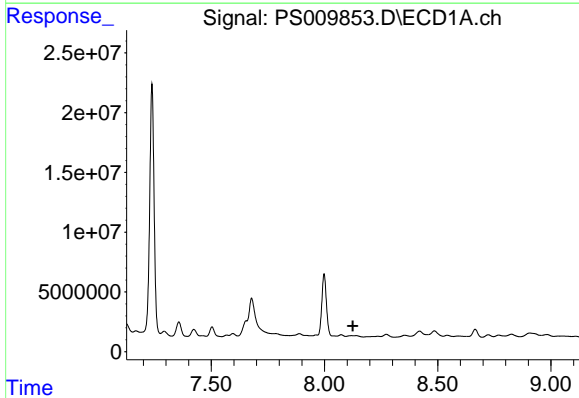
#4 2,4-DCAA
R.T.: 6.927 min
Delta R.T.: -0.001 min
Response: 252958292
Conc: 510.77 ng/ml



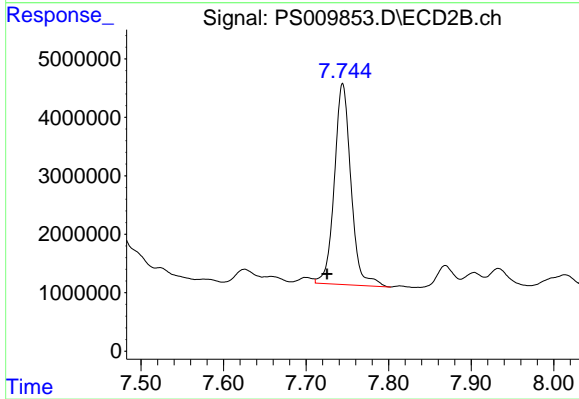
#5 DICAMBA
 R.T.: 7.423 min
 Delta R.T.: -0.009 min
 Response: 9042138
 Conc: 4.01 ng/ml



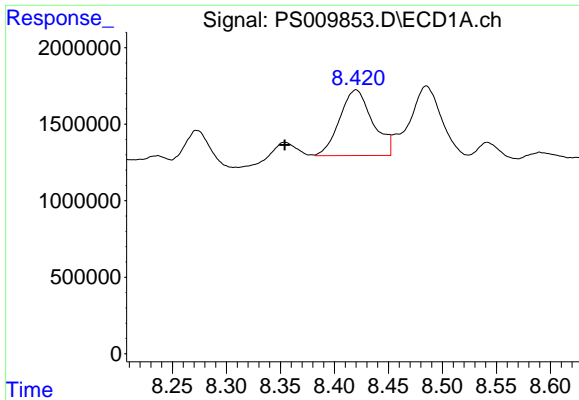
#5 DICAMBA
 R.T.: 7.094 min
 Delta R.T.: -0.004 min
 Response: 2821633
 Conc: 1.42 ng/ml



#8 DICHLORPROP
 R.T.: 0.000 min
 Exp R.T. : 8.125 min
 Response: 0
 Conc: N.D.

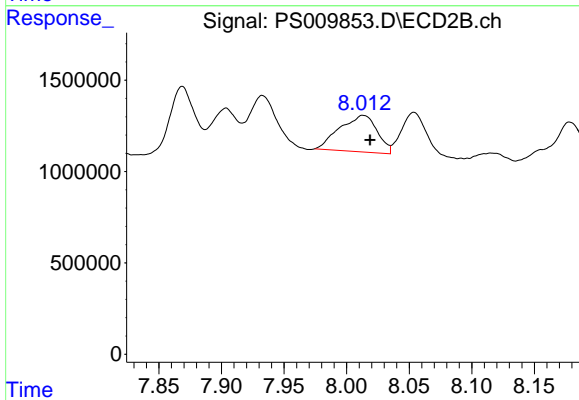


#8 DICHLORPROP
 R.T.: 7.744 min
 Delta R.T.: 0.019 min
 Response: 47981550
 Conc: 95.33 ng/ml



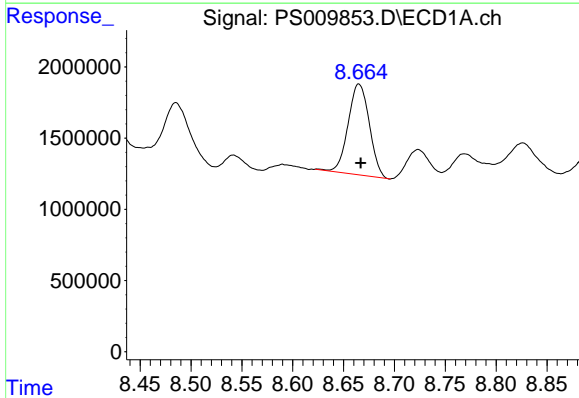
#9 2,4-D

R.T.: 8.420 min
Delta R.T.: 0.066 min
Response: 9122912
Conc: 15.89 ng/ml



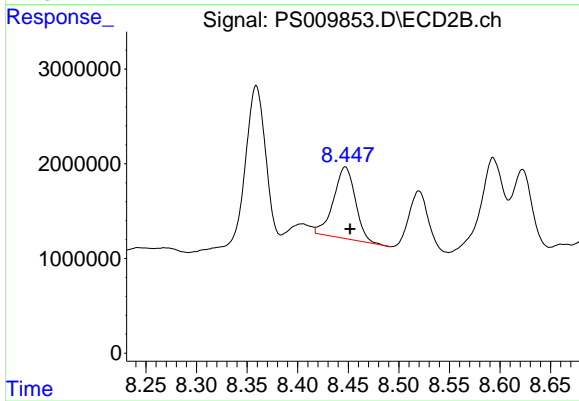
#9 2,4-D

R.T.: 8.013 min
Delta R.T.: -0.006 min
Response: 4156667
Conc: 6.94 ng/ml



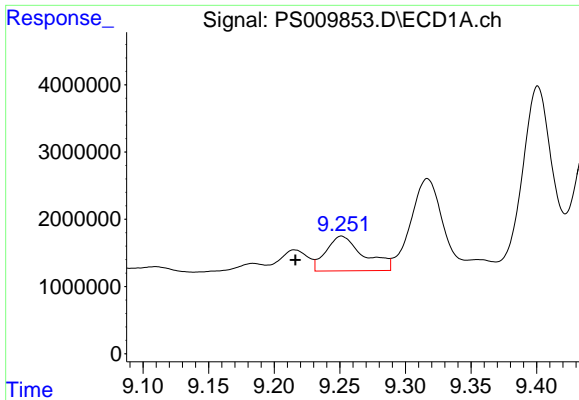
#10 Pentachlorophenol

R.T.: 8.665 min
Delta R.T.: -0.002 min
Response: 9245985
Conc: 1.24 ng/ml

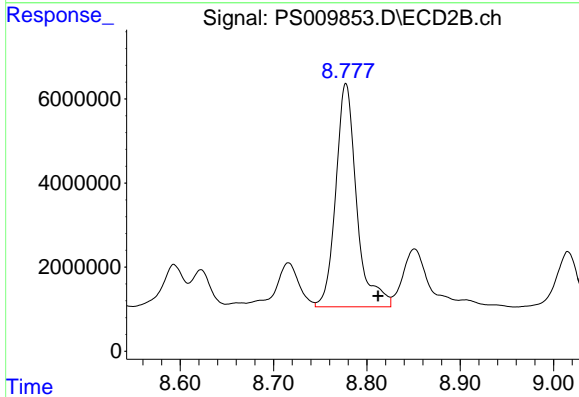


#10 Pentachlorophenol

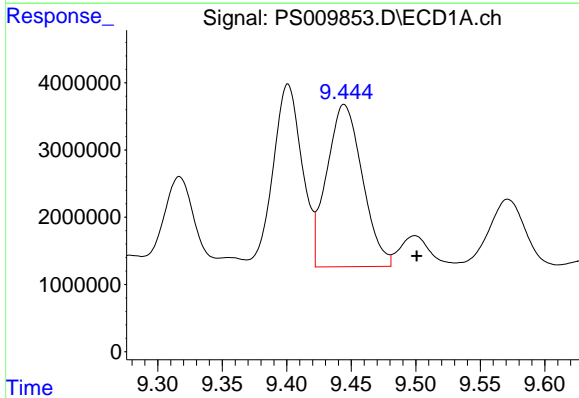
R.T.: 8.447 min
Delta R.T.: -0.005 min
Response: 11396538
Conc: 1.83 ng/ml



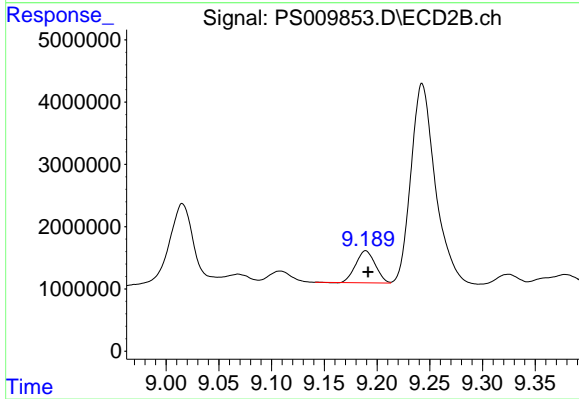
#11 2,4,5-TP (SILVEX)
 R.T.: 9.252 min
 Delta R.T.: 0.035 min
 Response: 10318034
 Conc: 3.49 ng/ml



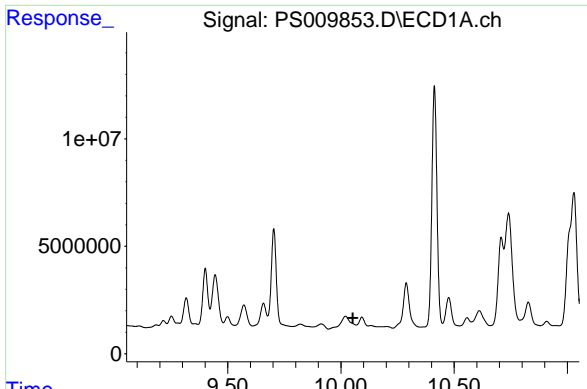
#11 2,4,5-TP (SILVEX)
 R.T.: 8.778 min
 Delta R.T.: -0.034 min
 Response: 82543029
 Conc: 31.56 ng/ml



#12 2,4,5-T
 R.T.: 9.445 min
 Delta R.T.: -0.056 min
 Response: 46210723
 Conc: 16.67 ng/ml

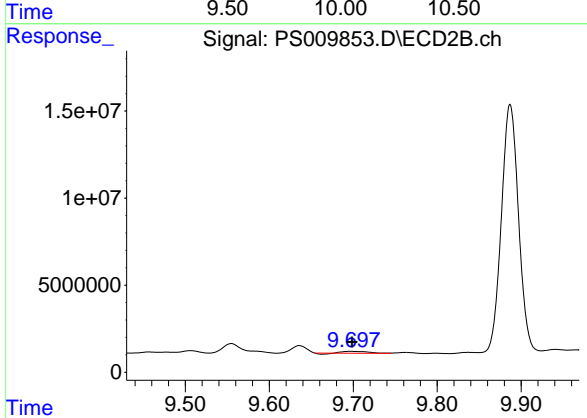


#12 2,4,5-T
 R.T.: 9.189 min
 Delta R.T.: -0.002 min
 Response: 6675647
 Conc: 2.56 ng/ml



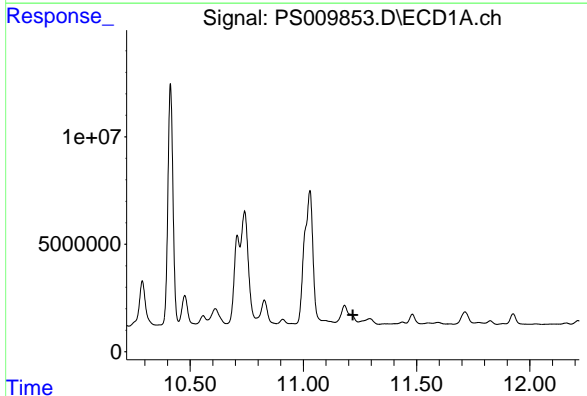
#13 2,4-DB

R.T.: 0.000 min
 Exp R.T. : 10.053 min
 Response: 0
 Conc: N.D.



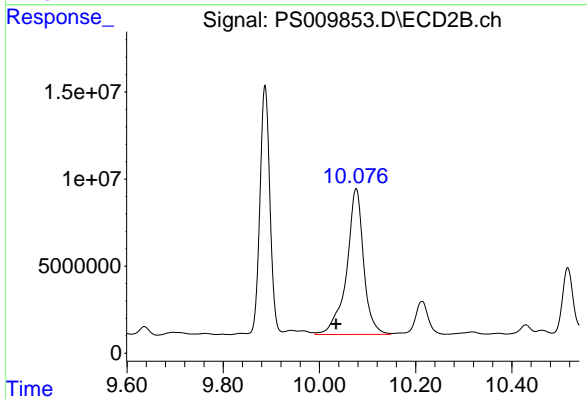
#13 2,4-DB

R.T.: 9.697 min
 Delta R.T.: -0.001 min
 Response: 2027684
 Conc: 5.72 ng/ml



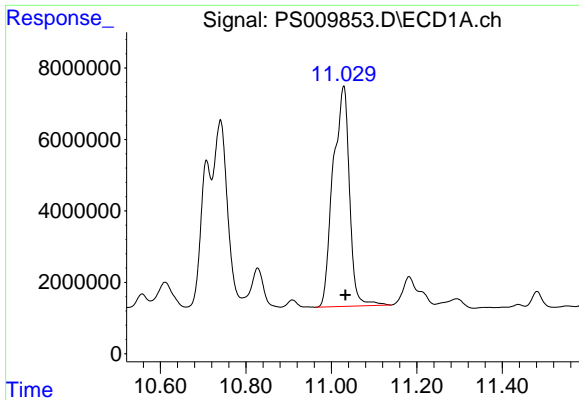
#14 DINOSEB

R.T.: 0.000 min
 Exp R.T. : 11.219 min
 Response: 0
 Conc: N.D.

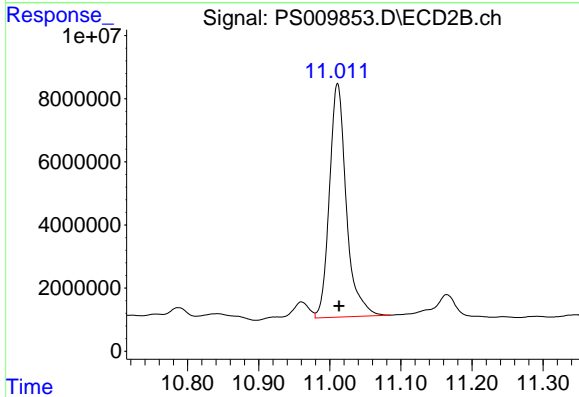


#14 DINOSEB

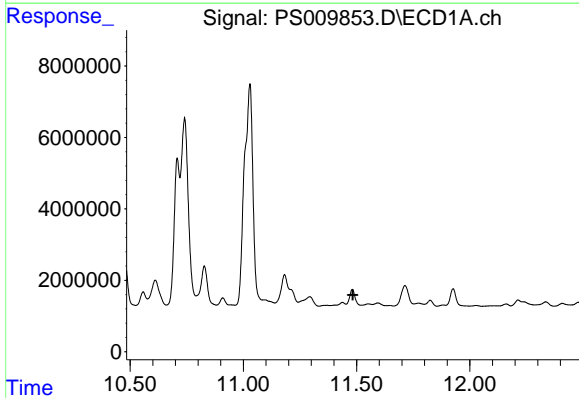
R.T.: 10.076 min
 Delta R.T.: 0.042 min
 Response: 205219334
 Conc: 104.21 ng/ml



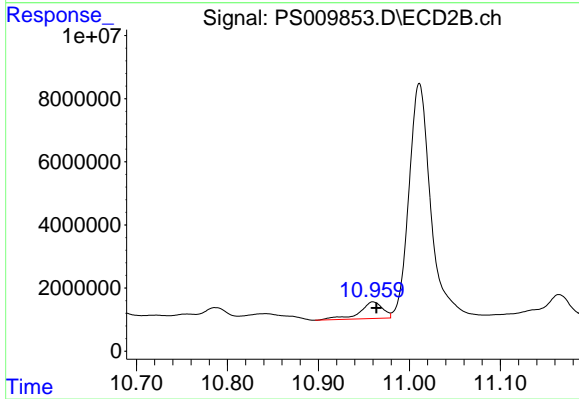
#15 Picloram
R.T.: 11.029 min
Delta R.T.: -0.004 min
Response: 163939227
Conc: 52.92 ng/ml



#15 Picloram
R.T.: 11.011 min
Delta R.T.: -0.002 min
Response: 122070439
Conc: 35.89 ng/ml



#16 DCPA
R.T.: 0.000 min
Exp R.T. : 11.484 min
Response: 0
Conc: N.D.



#16 DCPA
R.T.: 10.960 min
Delta R.T.: -0.004 min
Response: 9454472
Conc: 2.82 ng/ml