

Data Path : Z:\pestpcbsrv\HPCHEM1\ECD_S\Data\PS041922\
 Data File : PS019073.D
 Signal(s) : Signal #1: ECD1A.ch Signal #2: ECD2B.ch
 Acq On : 19 Apr 2022 23:49
 Operator : AJ\MA
 Sample : N2452-06
 Misc :
 ALS Vial : 11 Sample Multiplier: 1

Instrument :
 ECD_S
 ClientSampleId :

Integration File signal 1: autoint1.e
 Integration File signal 2: autoint2.e
 Quant Time: Apr 20 02:02:06 2022
 Quant Method : Z:\pestpcbsrv\HPCHEM1\ECD_S\Method\PS041822.M
 Quant Title : 8080.M
 QLast Update : Mon Apr 18 17:28:16 2022
 Response via : Initial Calibration
 Integrator: ChemStation

Volume Inj. : 2 µl
 Signal #1 Phase : Rtx-CLPesticides Signal #2 Phase: Rtx-CLPesticides2
 Signal #1 Info : 30M x 0.32mm x0.5 Signal #2 Info : 30M x 0.32mm x 0.25µm

Compound	RT#1	RT#2	Resp#1	Resp#2	ng/ml	ng/ml

System Monitoring Compounds						
4) S 2,4-DCAA	7.218	6.797	1901.2E6	511.4E6	508.347	704.484 #
Target Compounds						
1) T Dalapon	2.981f	2.503	190.7E6	215.8E6	42.481	232.426 #
2) T 3,5-DICHL...	6.458	5.999	-3513525	72437258	N.D.	64.655
3) T 4-Nitroph...	7.055	6.399	274.9E6	6933152	209.872	17.443 #
5) T DICAMBA	7.442	6.967	24374847	14164818	1.766	4.378 #
6) T MCPP	7.622	7.119f	87580514	47269769	8.039	18.386 #
7) T MCPA	7.742	7.311	139.2E6	-382752	9.237	N.D. #
8) T DICHLORPROP	8.058f	7.605	58124929	24487004	16.319	29.303 #
9) T 2,4-D	8.355	7.863	53913562	14191648	13.137	14.953
11) T 2,4,5-TP ...	9.166	8.628f	46912626	3175.5E6	2.356	674.404 #
12) T 2,4,5-T	9.448	9.043	2995.8E6	35912844	150.760	8.316 #
13) T 2,4-DB	10.082f	9.574	9239.7E6	4218.4E6	2623.634	7610.051 #
14) T DINOSEB	11.163	9.882	29976.6E6	687.0E6	1959.165	204.915 #
15) T Picloram	10.991	10.878	11617.9E6	1947.7E6	433.560	328.954
16) T DCPA	11.467	10.817	-44805238	448.1E6	N.D.	78.281

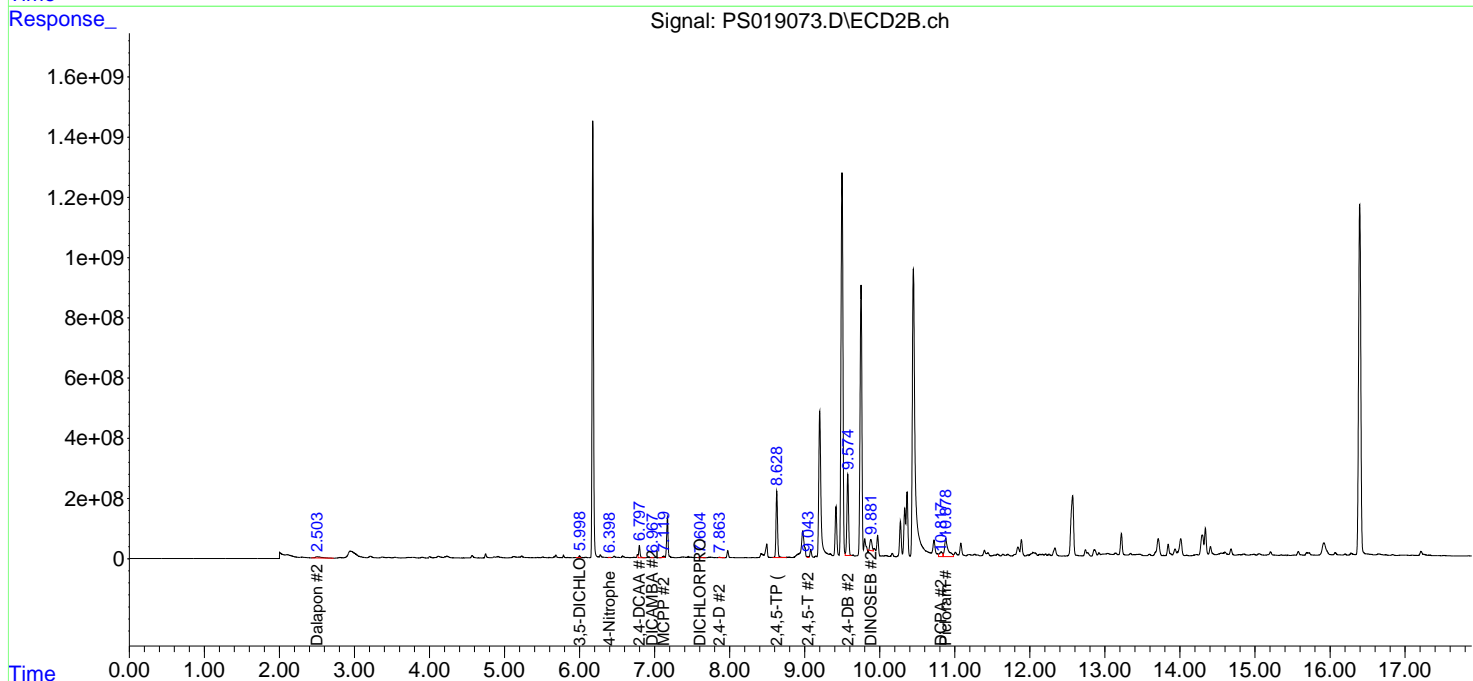
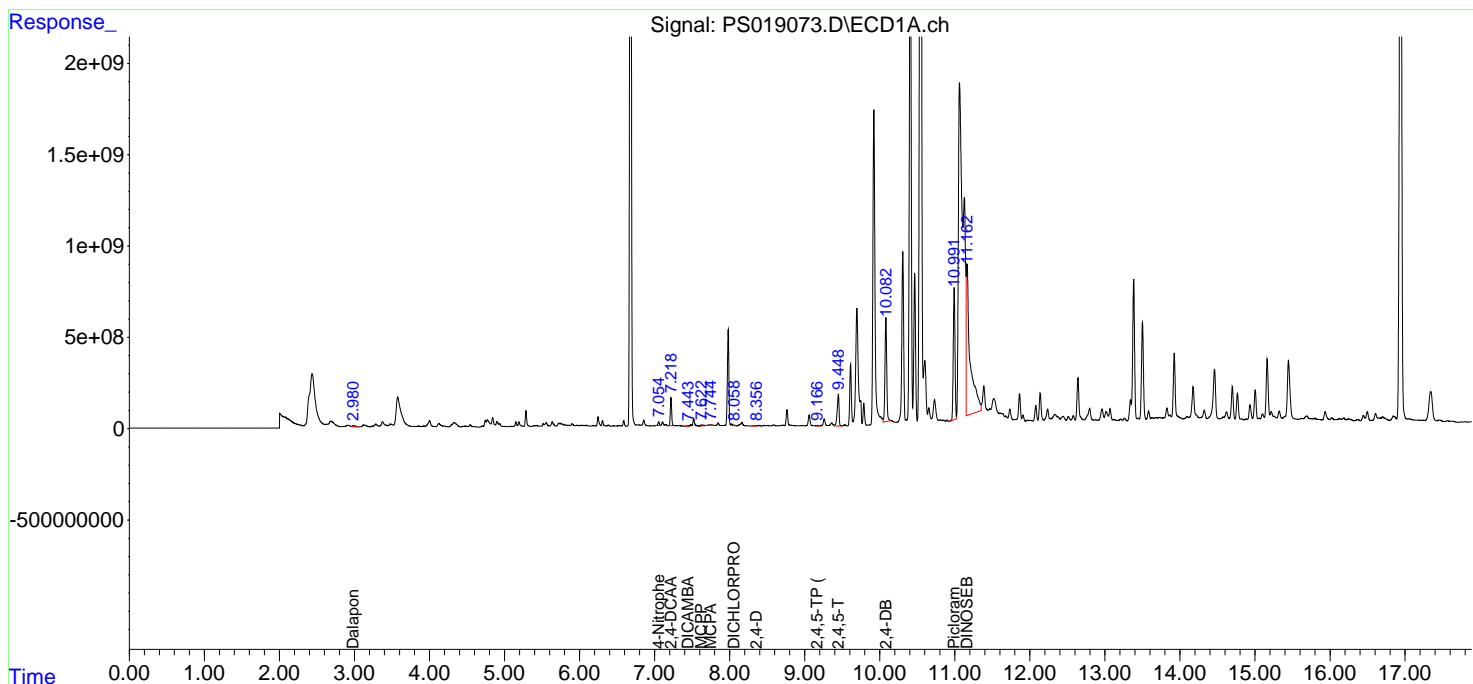
(f)=RT Delta > 1/2 Window (#)=Amounts differ by > 25% (m)=manual int.

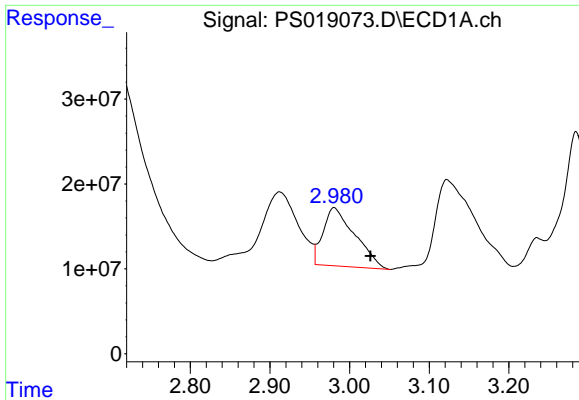
Data Path : Z:\pestpcbsrv\HPCHEM1\ECD_S\Data\PS041922\
 Data File : PS019073.D
 Signal(s) : Signal #1: ECD1A.ch Signal #2: ECD2B.ch
 Acq On : 19 Apr 2022 23:49
 Operator : AJ\MA
 Sample : N2452-06
 Misc :
 ALS Vial : 11 Sample Multiplier: 1

Instrument :
 ECD_S
 ClientSampleId :

Integration File signal 1: autoint1.e
 Integration File signal 2: autoint2.e
 Quant Time: Apr 20 02:02:06 2022
 Quant Method : Z:\pestpcbsrv\HPCHEM1\ECD_S\Method\PS041822.M
 Quant Title : 8080.M
 QLast Update : Mon Apr 18 17:28:16 2022
 Response via : Initial Calibration
 Integrator: ChemStation

Volume Inj. : 2 µl
 Signal #1 Phase : Rtx-CLPesticides Signal #2 Phase: Rtx-CLPesticides2
 Signal #1 Info : 30M x 0.32mm x 0.5 Signal #2 Info : 30M x 0.32mm x 0.25µm

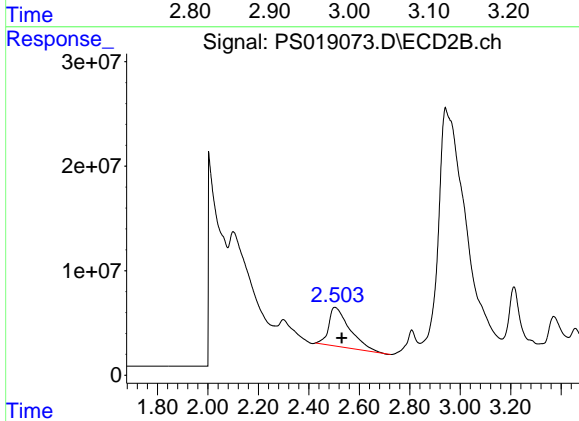




#1 Dalapon

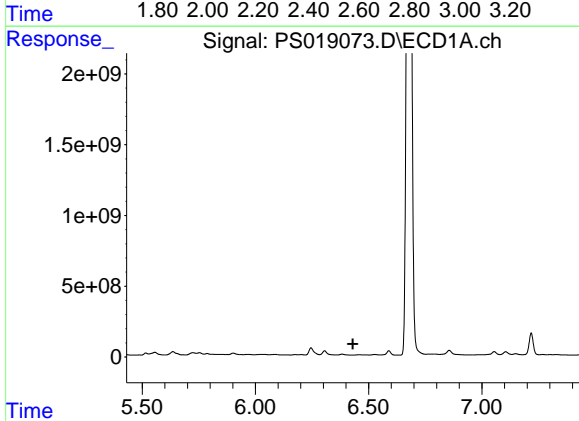
R.T.: 2.981 min
 Delta R.T.: -0.045 min
 Response: 190665867
 Conc: 42.48 ng/ml

Instrument :
 ECD_S
 ClientSampleId :



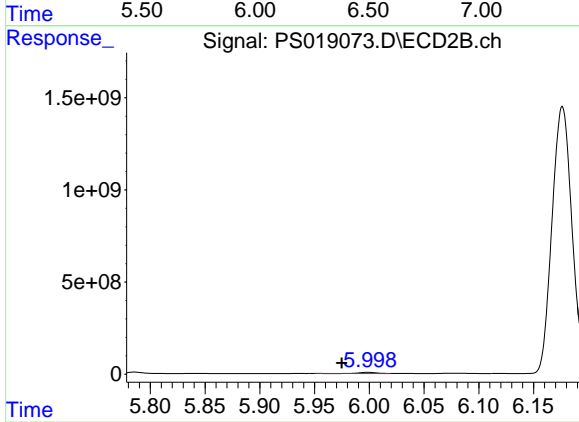
#1 Dalapon

R.T.: 2.503 min
 Delta R.T.: -0.027 min
 Response: 215800887
 Conc: 232.43 ng/ml



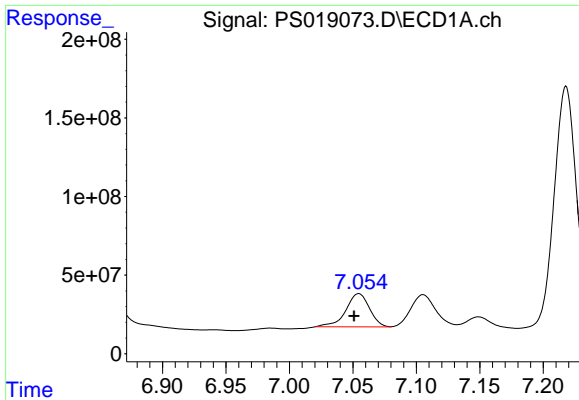
#2 3,5-DICHLOROBENZOIC ACID

R.T.: 6.458 min
 Delta R.T.: 0.027 min
 Response: -3513525
 Conc: N.D.



#2 3,5-DICHLOROBENZOIC ACID

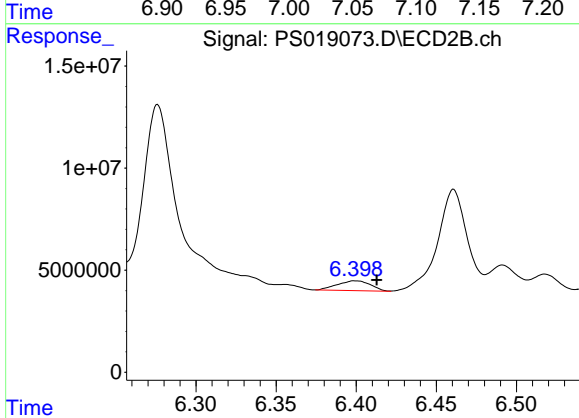
R.T.: 5.999 min
 Delta R.T.: 0.024 min
 Response: 72437258
 Conc: 64.65 ng/ml



#3 4-Nitrophenol

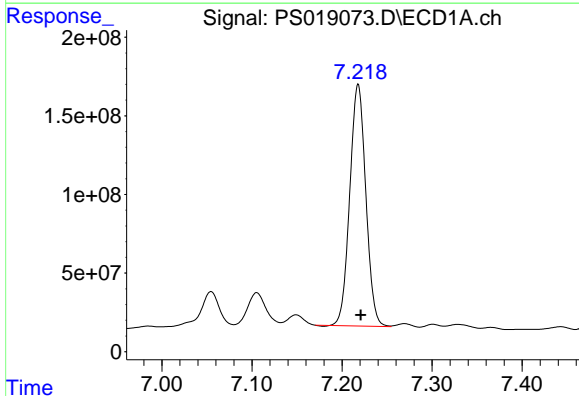
R.T.: 7.055 min
 Delta R.T.: 0.004 min
 Response: 274851841
 Conc: 209.87 ng/ml

Instrument :
 ECD_S
 ClientSampleId :



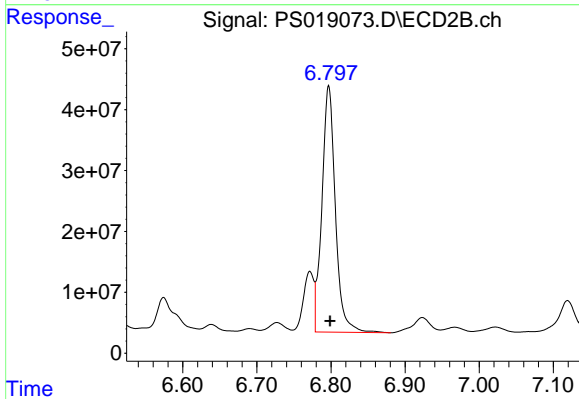
#3 4-Nitrophenol

R.T.: 6.399 min
 Delta R.T.: -0.013 min
 Response: 6933152
 Conc: 17.44 ng/ml



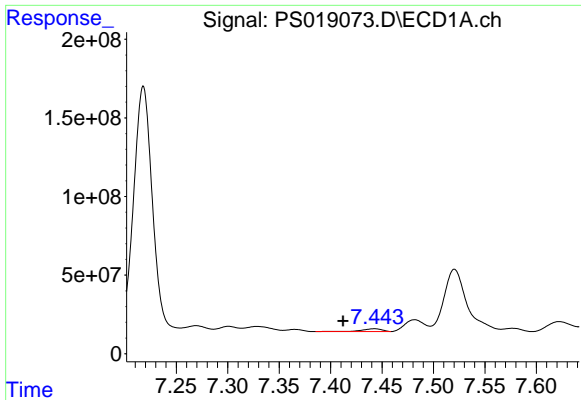
#4 2,4-DCAA

R.T.: 7.218 min
 Delta R.T.: -0.003 min
 Response: 1901245655
 Conc: 508.35 ng/ml



#4 2,4-DCAA

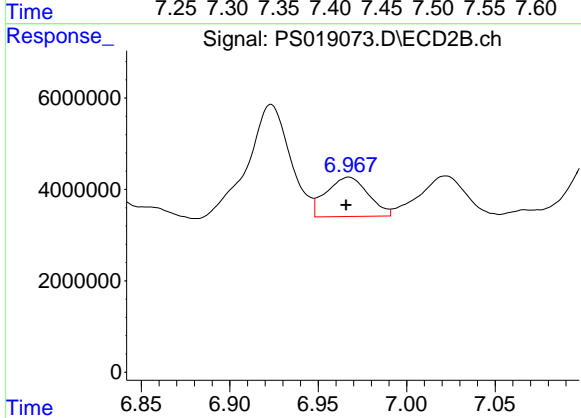
R.T.: 6.797 min
 Delta R.T.: -0.002 min
 Response: 511368514
 Conc: 704.48 ng/ml



#5 DICAMBA

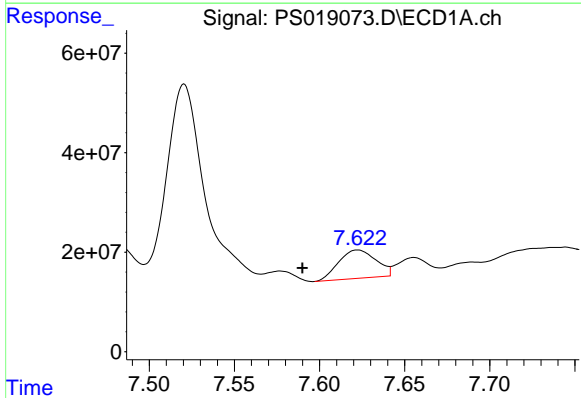
R.T.: 7.442 min
 Delta R.T.: 0.030 min
 Response: 24374847
 Conc: 1.77 ng/ml

Instrument :
 ECD_S
 ClientSampleId :



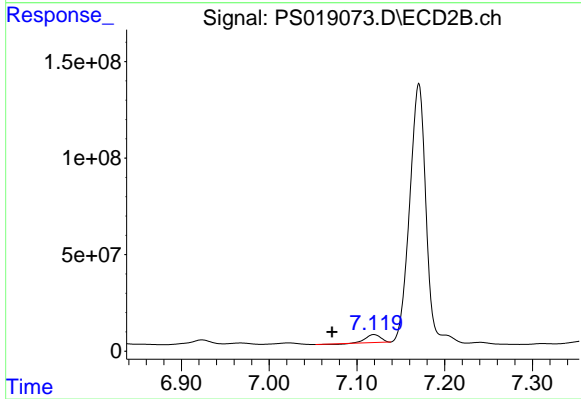
#5 DICAMBA

R.T.: 6.967 min
 Delta R.T.: 0.002 min
 Response: 14164818
 Conc: 4.38 ng/ml



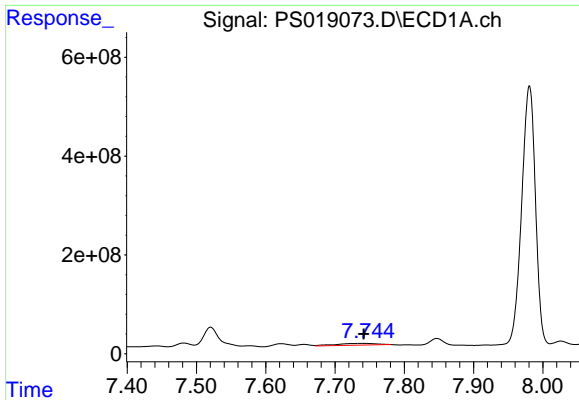
#6 MCPP

R.T.: 7.622 min
 Delta R.T.: 0.032 min
 Response: 87580514
 Conc: 8.04 ug/ml



#6 MCPP

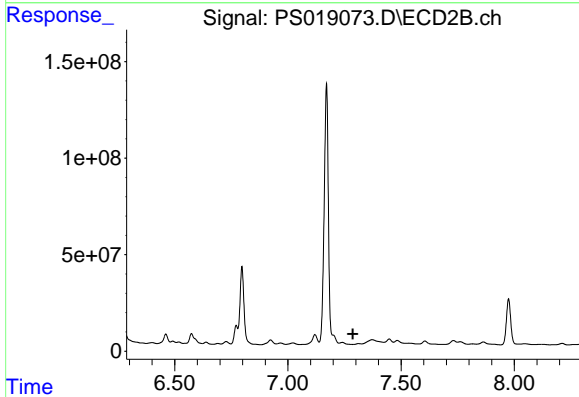
R.T.: 7.119 min
 Delta R.T.: 0.047 min
 Response: 47269769
 Conc: 18.39 ug/ml



#7 MCPA

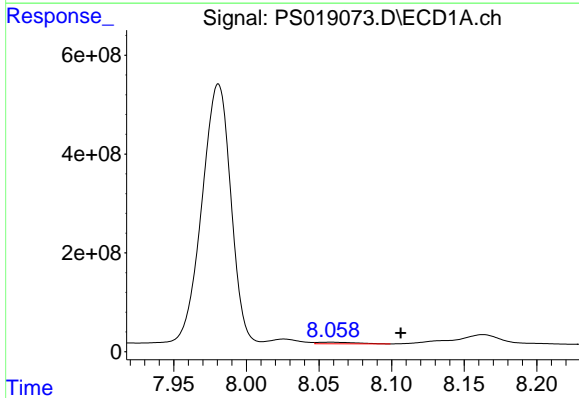
R.T.: 7.742 min
 Delta R.T.: 0.000 min
 Response: 139204726
 Conc: 9.24 ug/ml

Instrument :
 ECD_S
 ClientSampleId :



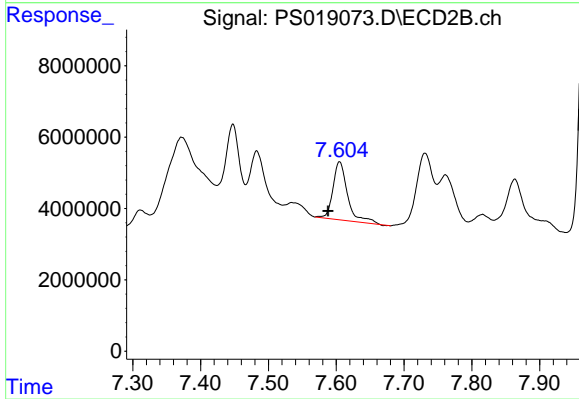
#7 MCPA

R.T.: 7.311 min
 Delta R.T.: 0.024 min
 Response: -382752
 Conc: N.D.



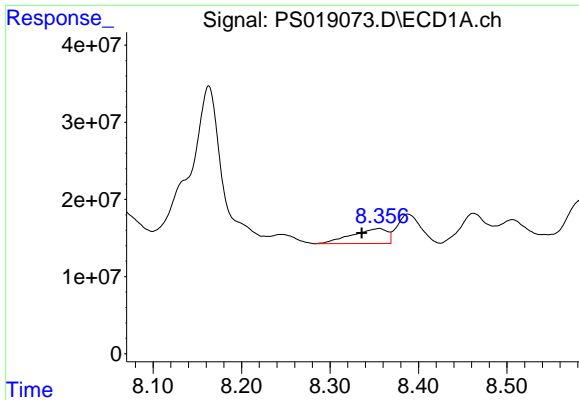
#8 DICHLORPROP

R.T.: 8.058 min
 Delta R.T.: -0.049 min
 Response: 58124929
 Conc: 16.32 ng/ml



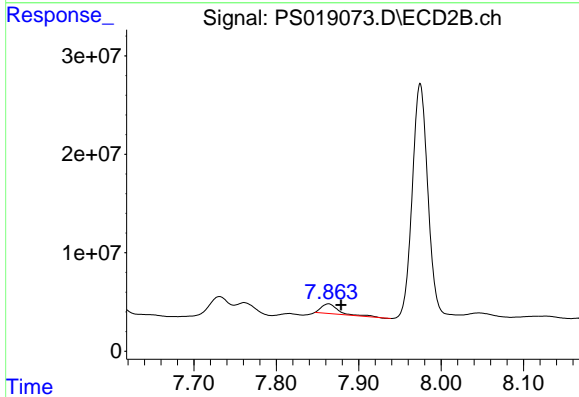
#8 DICHLORPROP

R.T.: 7.605 min
 Delta R.T.: 0.017 min
 Response: 24487004
 Conc: 29.30 ng/ml

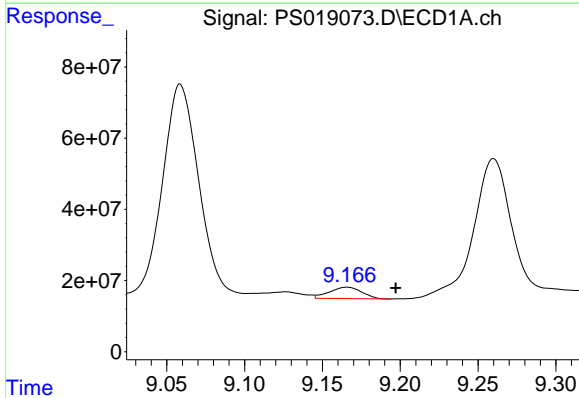


#9 2,4-D
 R.T.: 8.355 min
 Delta R.T.: 0.019 min
 Response: 53913562
 Conc: 13.14 ng/ml

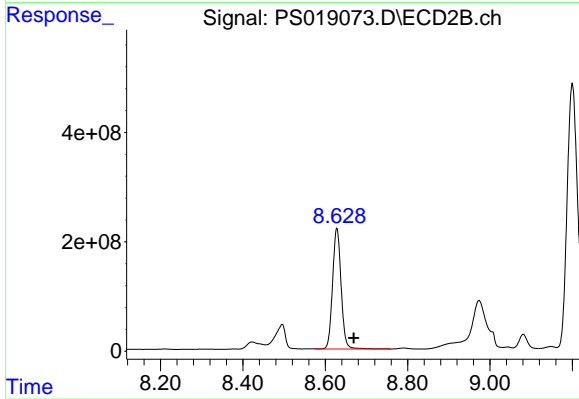
Instrument :
 ECD_S
 ClientSampleId :



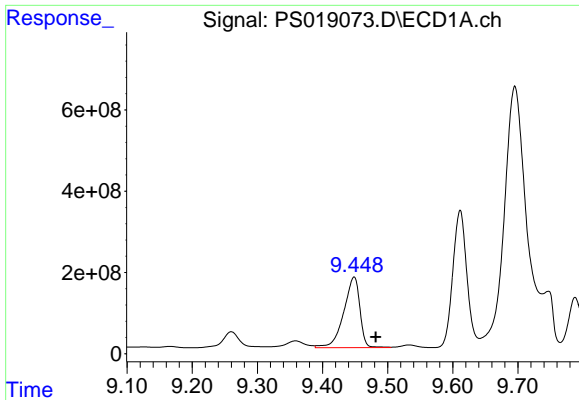
#9 2,4-D
 R.T.: 7.863 min
 Delta R.T.: -0.015 min
 Response: 14191648
 Conc: 14.95 ng/ml



#11 2,4,5-TP (SILVEX)
 R.T.: 9.166 min
 Delta R.T.: -0.031 min
 Response: 46912626
 Conc: 2.36 ng/ml



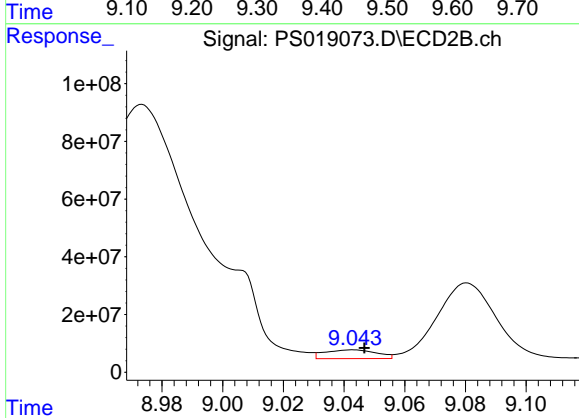
#11 2,4,5-TP (SILVEX)
 R.T.: 8.628 min
 Delta R.T.: -0.041 min
 Response: 3175452503
 Conc: 674.40 ng/ml



#12 2,4,5-T

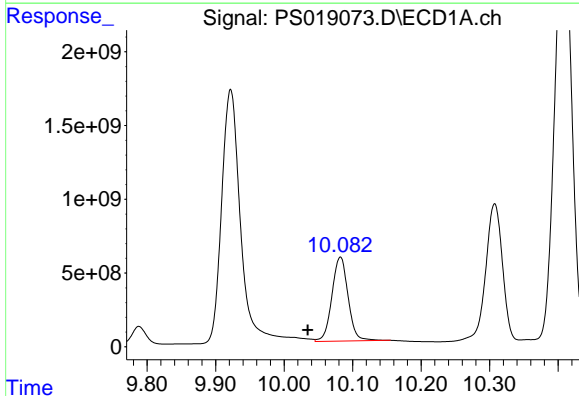
R.T.: 9.448 min
 Delta R.T.: -0.033 min
 Response: 2995788900
 Conc: 150.76 ng/ml

Instrument :
 ECD_S
 ClientSampleId :



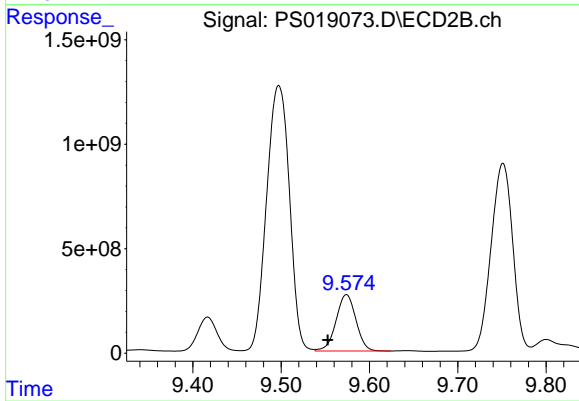
#12 2,4,5-T

R.T.: 9.043 min
 Delta R.T.: -0.004 min
 Response: 35912844
 Conc: 8.32 ng/ml



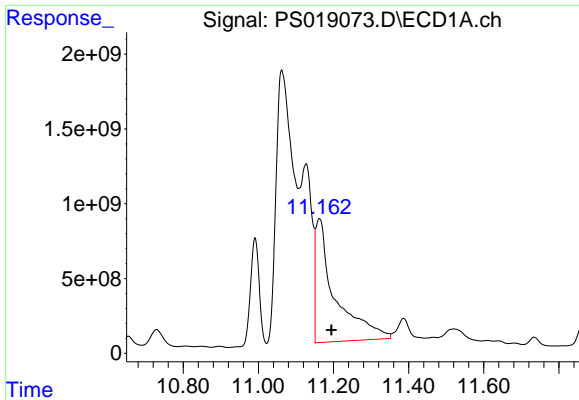
#13 2,4-DB

R.T.: 10.082 min
 Delta R.T.: 0.048 min
 Response: 9239689763
 Conc: 2623.63 ng/ml



#13 2,4-DB

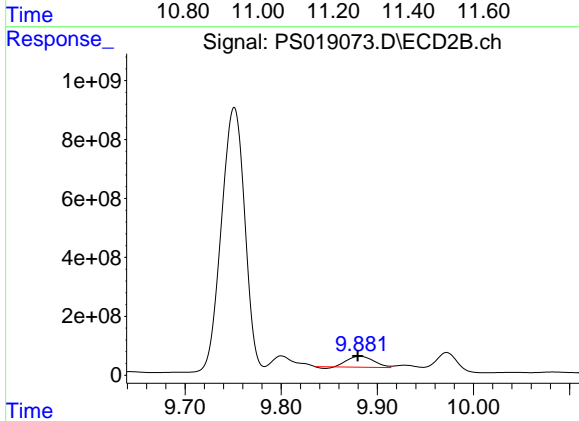
R.T.: 9.574 min
 Delta R.T.: 0.021 min
 Response: 4218368624
 Conc: 7610.05 ng/ml



#14 DINOSEB

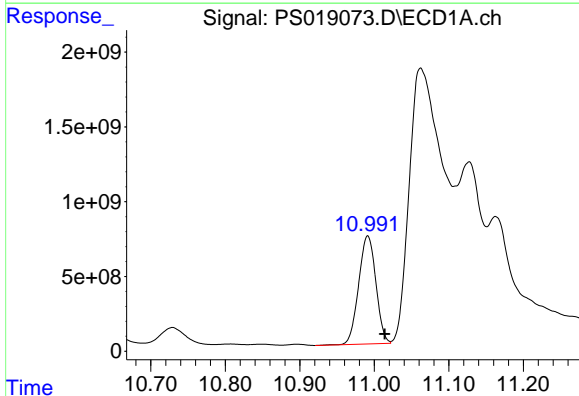
R.T.: 11.163 min
 Delta R.T.: -0.031 min
 Response: 29976554727
 Conc: 1959.16 ng/ml

Instrument :
 ECD_S
 ClientSampleId :



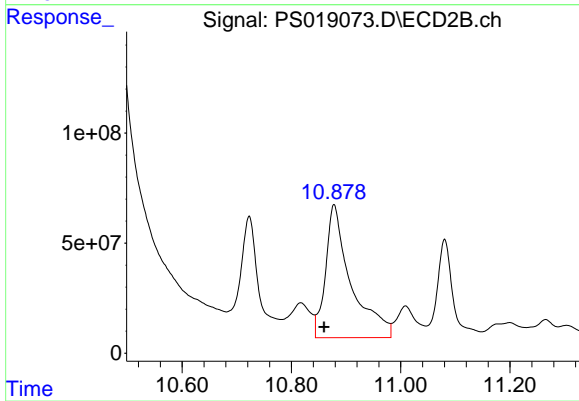
#14 DINOSEB

R.T.: 9.882 min
 Delta R.T.: 0.002 min
 Response: 687049566
 Conc: 204.91 ng/ml



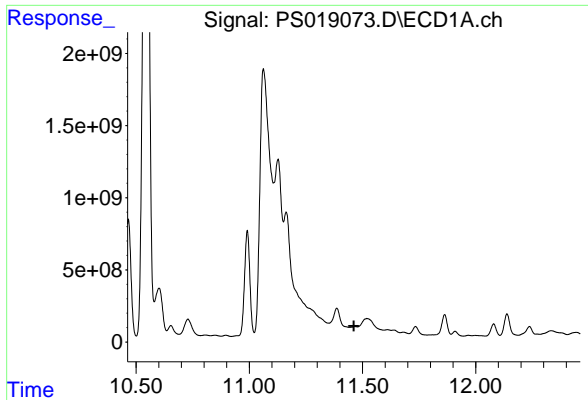
#15 Picloram

R.T.: 10.991 min
 Delta R.T.: -0.023 min
 Response: 11617940126
 Conc: 433.56 ng/ml



#15 Picloram

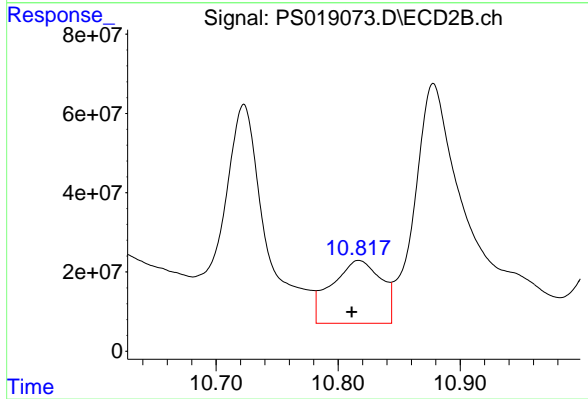
R.T.: 10.878 min
 Delta R.T.: 0.018 min
 Response: 1947736731
 Conc: 328.95 ng/ml



#16 DCPA

R.T.: 11.467 min
 Delta R.T.: 0.005 min
 Response: -44805238
 Conc: N.D.

Instrument :
 ECD_S
 ClientSampleId :



#16 DCPA

R.T.: 10.817 min
 Delta R.T.: 0.006 min
 Response: 448058748
 Conc: 78.28 ng/ml