

Data Path : Z:\pestpcbsrv\HPCHEM1\ECD_S\Data\PS041924\
 Data File : PS026486.D
 Signal(s) : Signal #1: ECD1A.ch Signal #2: ECD2B.ch
 Acq On : 19 Apr 2024 15:16
 Operator : AR\AJ
 Sample : PB160326BL
 Misc :
 ALS Vial : 9 Sample Multiplier: 1

Instrument :
 ECD_S
 ClientSampleId :
 PB160326BL

Integration File signal 1: autoint1.e
 Integration File signal 2: autoint2.e
 Quant Time: Apr 19 16:00:25 2024
 Quant Method : Z:\pestpcbsrv\HPCHEM1\ECD_S\Method\PS041924.M
 Quant Title : 8080.M
 QLast Update : Fri Apr 19 12:45:38 2024
 Response via : Initial Calibration
 Integrator: ChemStation

Volume Inj. : 2 µl
 Signal #1 Phase : Rtx-CLPesticides Signal #2 Phase: Rtx-CLPesticides2
 Signal #1 Info : 30M x 0.32mm x0.5 Signal #2 Info : 30M x 0.32mm x 0.25µm

	Compound	RT#1	RT#2	Resp#1	Resp#2	ng/ml	ng/ml

System Monitoring Compounds							
4) S	2,4-DCAA	7.316	7.804	1313.1E6	797.8E6	533.703	450.007
Target Compounds							
1) T	Dalapon	2.642f	2.690f	511.2E6	324.5E6	134.753	114.583
2) T	3,5-DICHL...	6.458	6.720f	18919890	5253637	5.610	2.165 #
3) T	4-Nitroph...	7.105	7.318	5336858	15805639	3.290	13.148 #
6) T	MCPD	7.685	8.104	12008456	40003458	1.635	7.193 #
7) T	MCPA	7.840	0.000	1756623	0	<MDL	N.D. #
8) T	DICHLORPROP	8.183f	8.703f	22293738	1566010	7.593	<MDL #
9) T	2,4-D	8.472f	9.051	14471404	4924731	4.449	2.143 #
10) T	Pentachlo...	8.747	9.575	6162450	10096000	<MDL	<MDL #
11) T	2,4,5-TP ...	0.000	9.932f	0	3577.2E6	N.D.	295.842
13) T	2,4-DB	10.243f	10.979f	632.6E6	-388785520	253.296	N.D. #
15) T	Picloram	11.198f	12.439	18272004	1457.2E6	<MDL	79.492 #
16) T	DCEA	11.689f	0.000	60923943	0	3.129	N.D. #

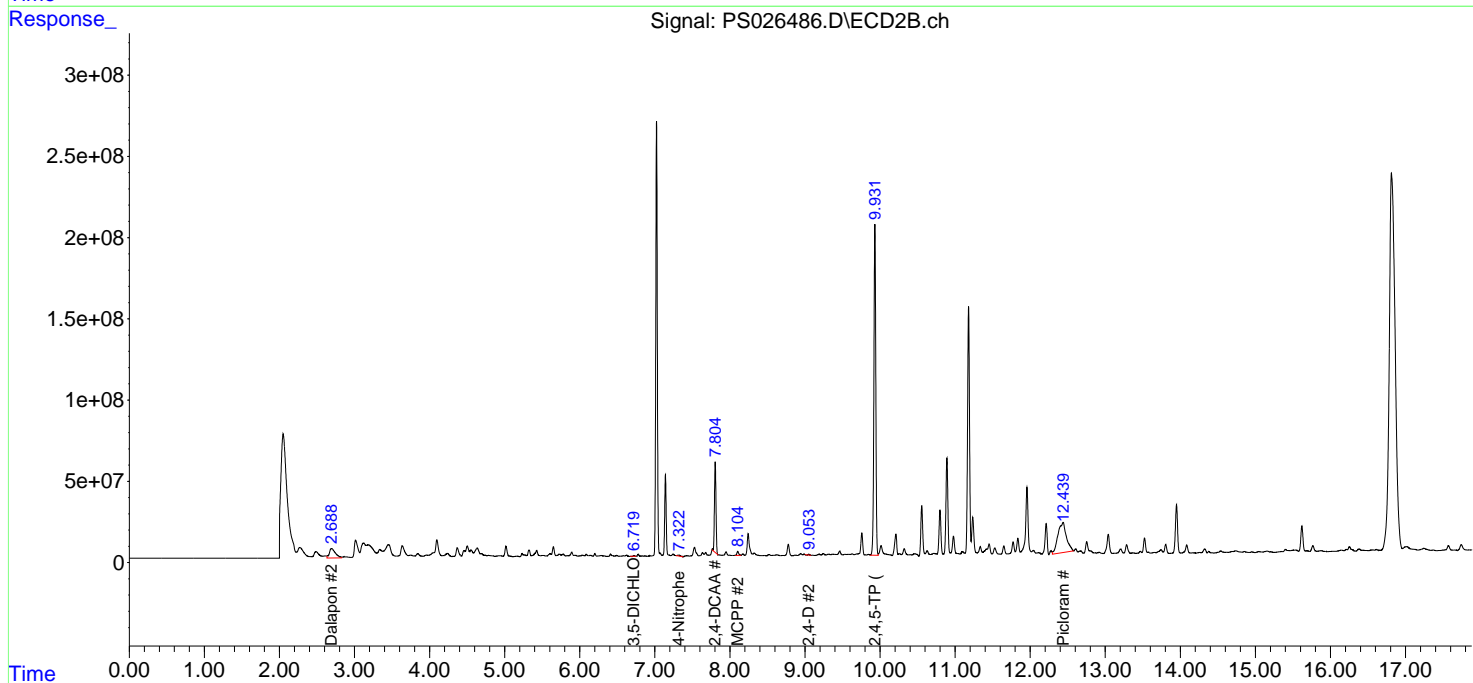
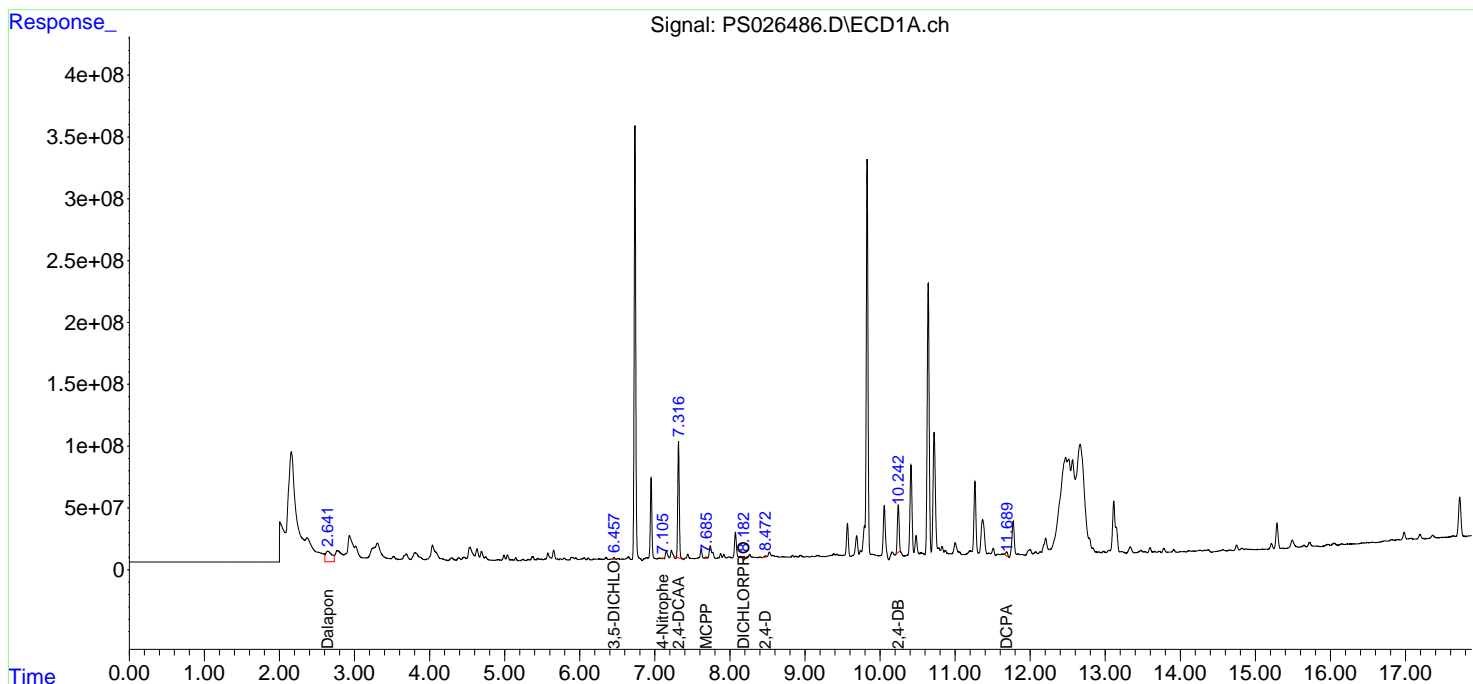
(f)=RT Delta > 1/2 Window (#)=Amounts differ by > 25% (m)=manual int.

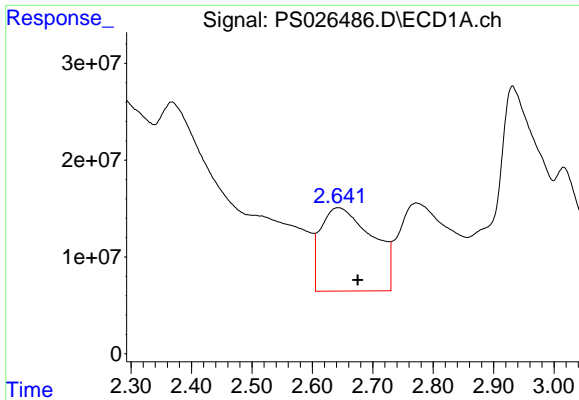
Data Path : Z:\pestpcbsrv\HPCHEM1\ECD_S\Data\PS041924\
 Data File : PS026486.D
 Signal(s) : Signal #1: ECD1A.ch Signal #2: ECD2B.ch
 Acq On : 19 Apr 2024 15:16
 Operator : AR\AJ
 Sample : PB160326BL
 Misc :
 ALS Vial : 9 Sample Multiplier: 1

Instrument :
 ECD_S
 ClientSampleId :
 PB160326BL

Integration File signal 1: autoint1.e
 Integration File signal 2: autoint2.e
 Quant Time: Apr 19 16:00:25 2024
 Quant Method : Z:\pestpcbsrv\HPCHEM1\ECD_S\Method\PS041924.M
 Quant Title : 8080.M
 QLast Update : Fri Apr 19 12:45:38 2024
 Response via : Initial Calibration
 Integrator: ChemStation

Volume Inj. : 2 µl
 Signal #1 Phase : Rtx-CLPesticides Signal #2 Phase: Rtx-CLPesticides2
 Signal #1 Info : 30M x 0.32mm x0.5 Signal #2 Info : 30M x 0.32mm x 0.25µm

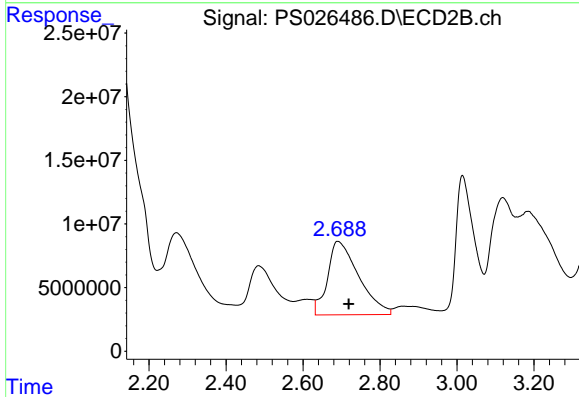




#1 Dalapon

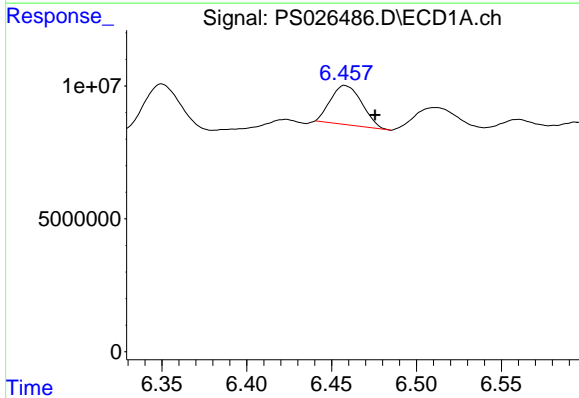
R.T.: 2.642 min
 Delta R.T.: -0.033 min
 Response: 511240105
 Conc: 134.75 ng/ml

Instrument :
 ECD_S
 ClientSampleId :
 PB160326BL



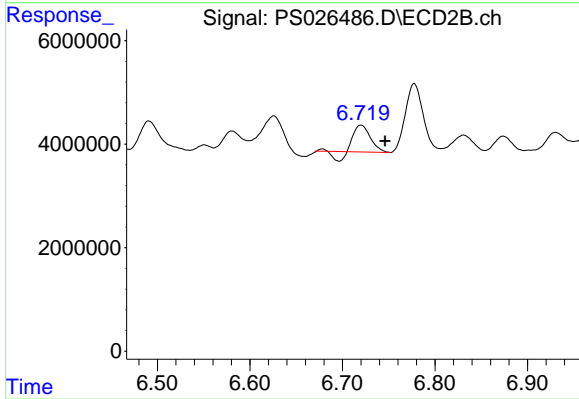
#1 Dalapon

R.T.: 2.690 min
 Delta R.T.: -0.029 min
 Response: 324481935
 Conc: 114.58 ng/ml



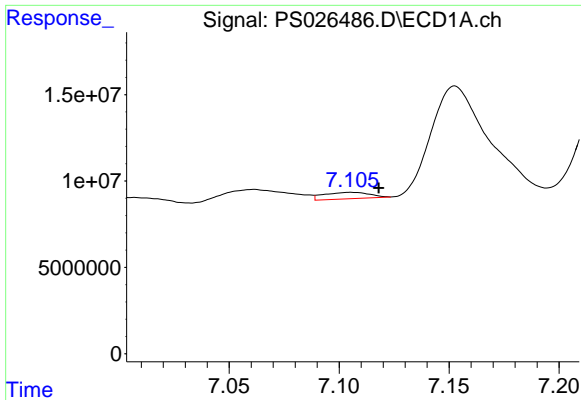
#2 3,5-DICHLOROBENZOIC ACID

R.T.: 6.458 min
 Delta R.T.: -0.018 min
 Response: 18919890
 Conc: 5.61 ng/ml



#2 3,5-DICHLOROBENZOIC ACID

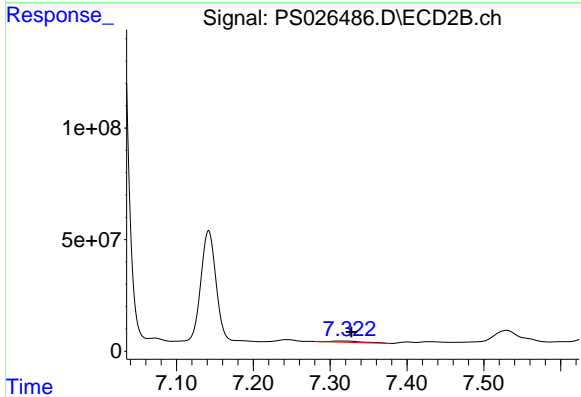
R.T.: 6.720 min
 Delta R.T.: -0.026 min
 Response: 5253637
 Conc: 2.17 ng/ml



#3 4-Nitrophenol

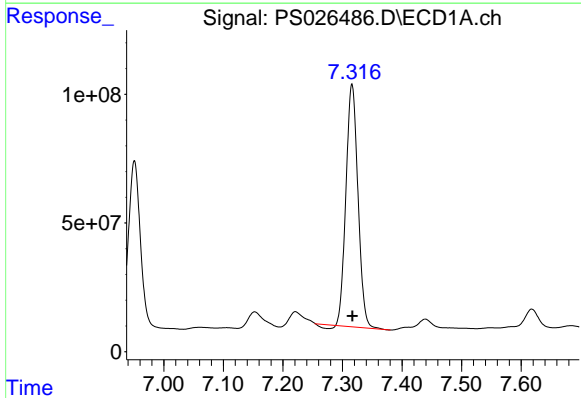
R.T.: 7.105 min
 Delta R.T.: -0.013 min
 Response: 5336858
 Conc: 3.29 ng/ml

Instrument :
 ECD_S
 ClientSampleId :
 PB160326BL



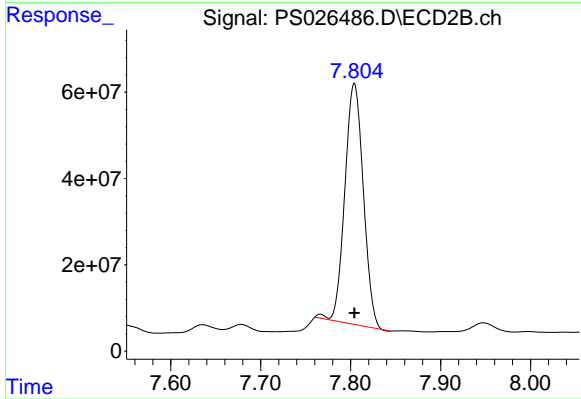
#3 4-Nitrophenol

R.T.: 7.318 min
 Delta R.T.: -0.009 min
 Response: 15805639
 Conc: 13.15 ng/ml



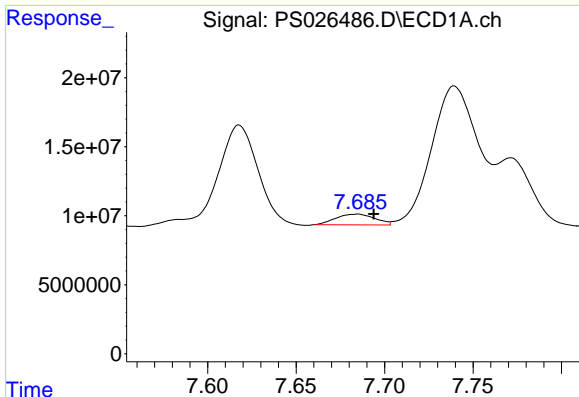
#4 2,4-DCAA

R.T.: 7.316 min
 Delta R.T.: 0.000 min
 Response: 1313122571
 Conc: 533.70 ng/ml



#4 2,4-DCAA

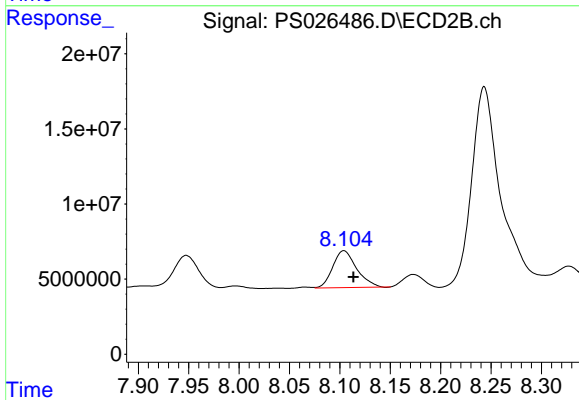
R.T.: 7.804 min
 Delta R.T.: 0.000 min
 Response: 797849839
 Conc: 450.01 ng/ml



#6 MCPP

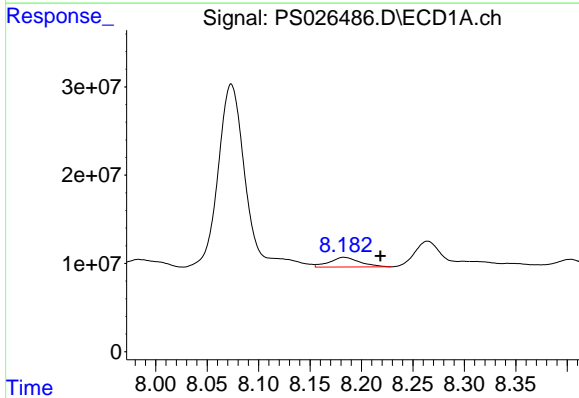
R.T.: 7.685 min
 Delta R.T.: -0.009 min
 Response: 12008456
 Conc: 1.64 ug/ml

Instrument :
 ECD_S
 ClientSampleId :
 PB160326BL



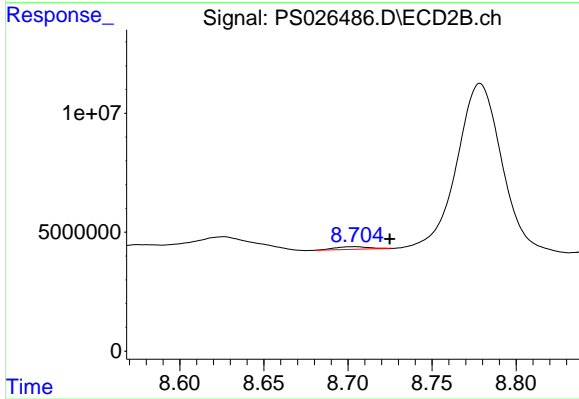
#6 MCPP

R.T.: 8.104 min
 Delta R.T.: -0.009 min
 Response: 40003458
 Conc: 7.19 ug/ml



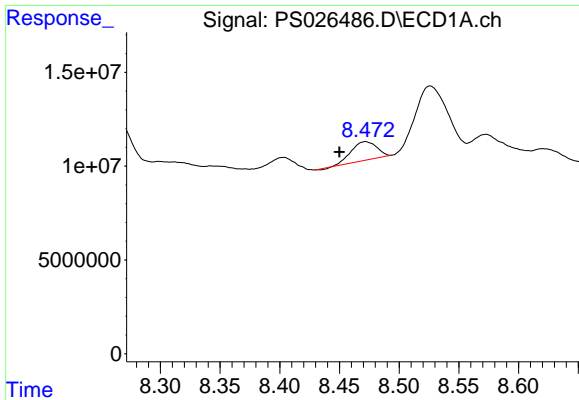
#8 DICHLORPROP

R.T.: 8.183 min
 Delta R.T.: -0.036 min
 Response: 22293738
 Conc: 7.59 ng/ml



#8 DICHLORPROP

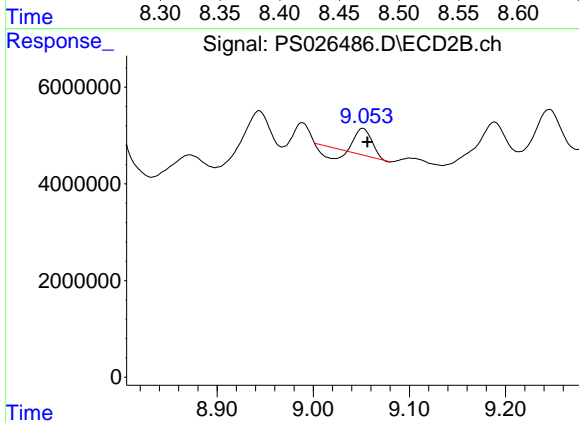
R.T.: 8.703 min
 Delta R.T.: -0.022 min
 Response: 1566010
 Conc: N.D.



#9 2,4-D

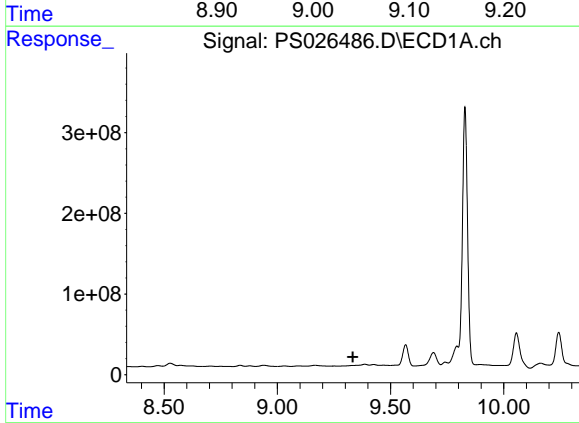
R.T.: 8.472 min
 Delta R.T.: 0.022 min
 Response: 14471404
 Conc: 4.45 ng/ml

Instrument :
 ECD_S
 ClientSampleId :
 PB160326BL



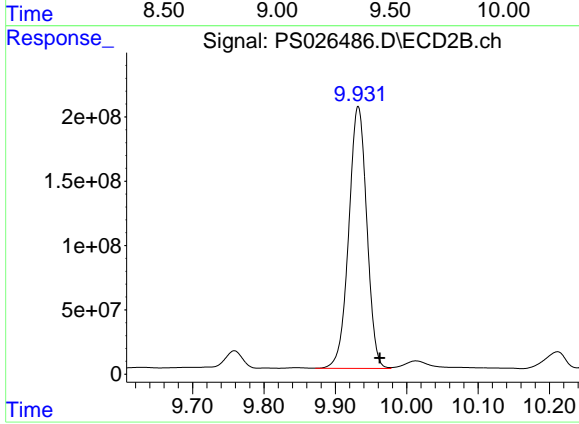
#9 2,4-D

R.T.: 9.051 min
 Delta R.T.: -0.005 min
 Response: 4924731
 Conc: 2.14 ng/ml



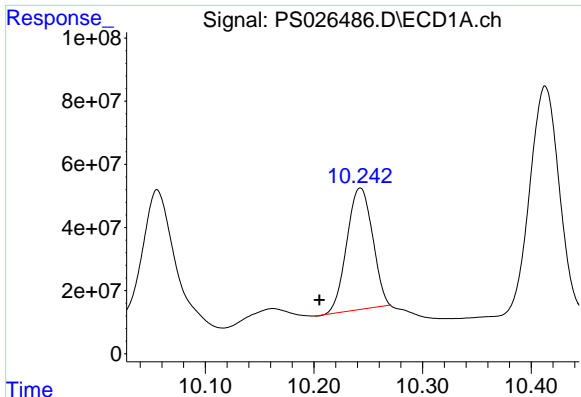
#11 2,4,5-TP (SILVEX)

R.T.: 0.000 min
 Exp R.T. : 9.334 min
 Response: 0
 Conc: N.D.



#11 2,4,5-TP (SILVEX)

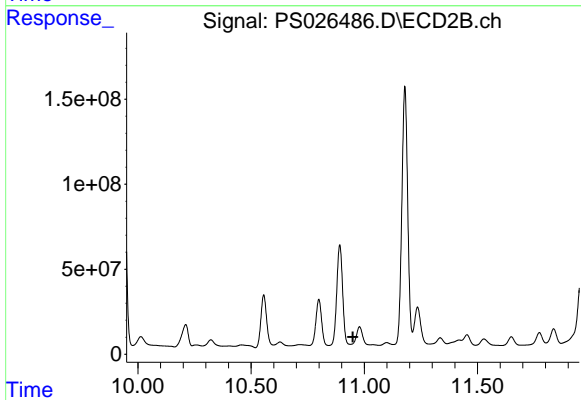
R.T.: 9.932 min
 Delta R.T.: -0.030 min
 Response: 3577168976
 Conc: 295.84 ng/ml



#13 2,4-DB

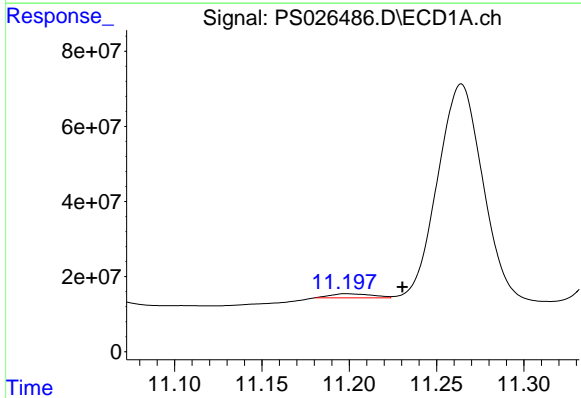
R.T.: 10.243 min
 Delta R.T.: 0.038 min
 Response: 632552707
 Conc: 253.30 ng/ml

Instrument :
 ECD_S
 ClientSampleId :
 PB160326BL



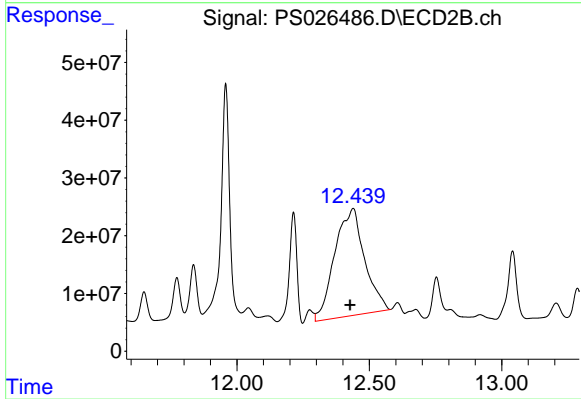
#13 2,4-DB

R.T.: 10.979 min
 Delta R.T.: 0.029 min
 Response: -388785520
 Conc: N.D.



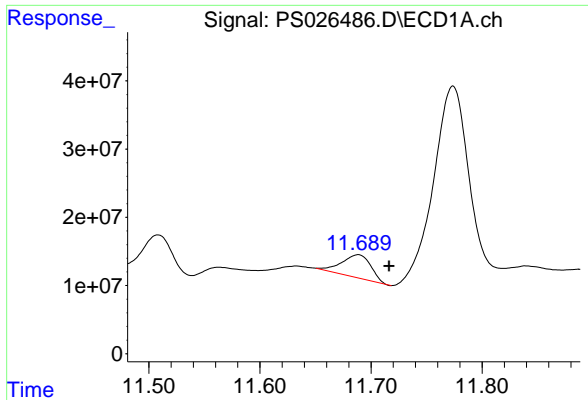
#15 Picloram

R.T.: 11.198 min
 Delta R.T.: -0.032 min
 Response: 18272004
 Conc: N.D.



#15 Picloram

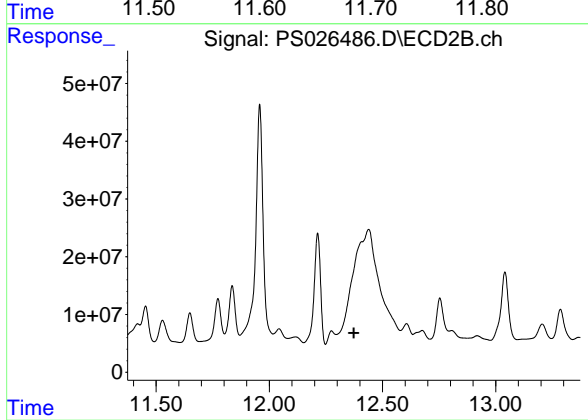
R.T.: 12.439 min
 Delta R.T.: 0.011 min
 Response: 1457216223
 Conc: 79.49 ng/ml



#16 DCPA

R.T.: 11.689 min
 Delta R.T.: -0.028 min
 Response: 60923943
 Conc: 3.13 ng/ml

Instrument :
 ECD_S
 ClientSampleId :
 PB160326BL



#16 DCPA

R.T.: 0.000 min
 Exp R.T. : 12.374 min
 Response: 0
 Conc: N.D.