

Data Path : Z:\pestpcbsrv\HPCHEM1\ECD_S\Data\PS041924\
 Data File : PS026498.D
 Signal(s) : Signal #1: ECD1A.ch Signal #2: ECD2B.ch
 Acq On : 19 Apr 2024 20:09
 Operator : AR\AJ
 Sample : PB160359BS
 Misc :
 ALS Vial : 21 Sample Multiplier: 1

Instrument :
 ECD_S
 ClientSampleId :

Integration File signal 1: autoint1.e
 Integration File signal 2: autoint2.e
 Quant Time: Apr 20 04:40:23 2024
 Quant Method : Z:\pestpcbsrv\HPCHEM1\ECD_S\Method\PS041924.M
 Quant Title : 8080.M
 QLast Update : Fri Apr 19 12:45:38 2024
 Response via : Initial Calibration
 Integrator: ChemStation

Volume Inj. : 2 µl
 Signal #1 Phase : Rtx-CLPesticides Signal #2 Phase: Rtx-CLPesticides2
 Signal #1 Info : 30M x 0.32mm x0.5 Signal #2 Info : 30M x 0.32mm x 0.25µm

Compound	RT#1	RT#2	Resp#1	Resp#2	ng/ml	ng/ml

System Monitoring Compounds						
4) S 2,4-DCAA	7.315	7.804	1367.6E6	768.5E6	555.837	433.457
Target Compounds						
1) T Dalapon	2.673	2.718	1602.9E6	1533.4E6	422.493	541.489 #
2) T 3,5-DICHL...	6.473	6.745	1757.8E6	1199.0E6	521.159	494.164
3) T 4-Nitroph...	7.116	7.327	851.3E6	534.9E6	524.761	444.986
5) T DICAMBA	7.505	8.005	4938.4E6	3692.8E6	490.283	466.170
6) T MCPP	7.686	8.107	369.2E6	265.9E6	50.276	47.808
7) T MCPA	7.837	8.352	512.1E6	385.5E6	47.657	47.516
8) T DICHLORPROP	8.216	8.724	1424.2E6	943.8E6	485.083	449.646
9) T 2,4-D	8.448	9.056	1956.4E6	1226.7E6	601.426	533.838
10) T Pentachlo...	8.748	9.589	22954.9E6	14987.3E6	558.875	499.532
11) T 2,4,5-TP ...	9.333	9.964	9540.5E6	7407.4E6	567.428	612.617
12) T 2,4,5-T	9.630	10.385	9240.2E6	5773.6E6	526.736	472.853
14) T DINOSEB	11.424	11.330	4603.2E6	4408.3E6	410.647	536.735 #
15) T Picloram	11.229	12.429	13505.6E6	8213.5E6	581.923	448.052
16) T DCPA	11.713	12.375	9301.4E6	7563.4E6	477.700	508.488

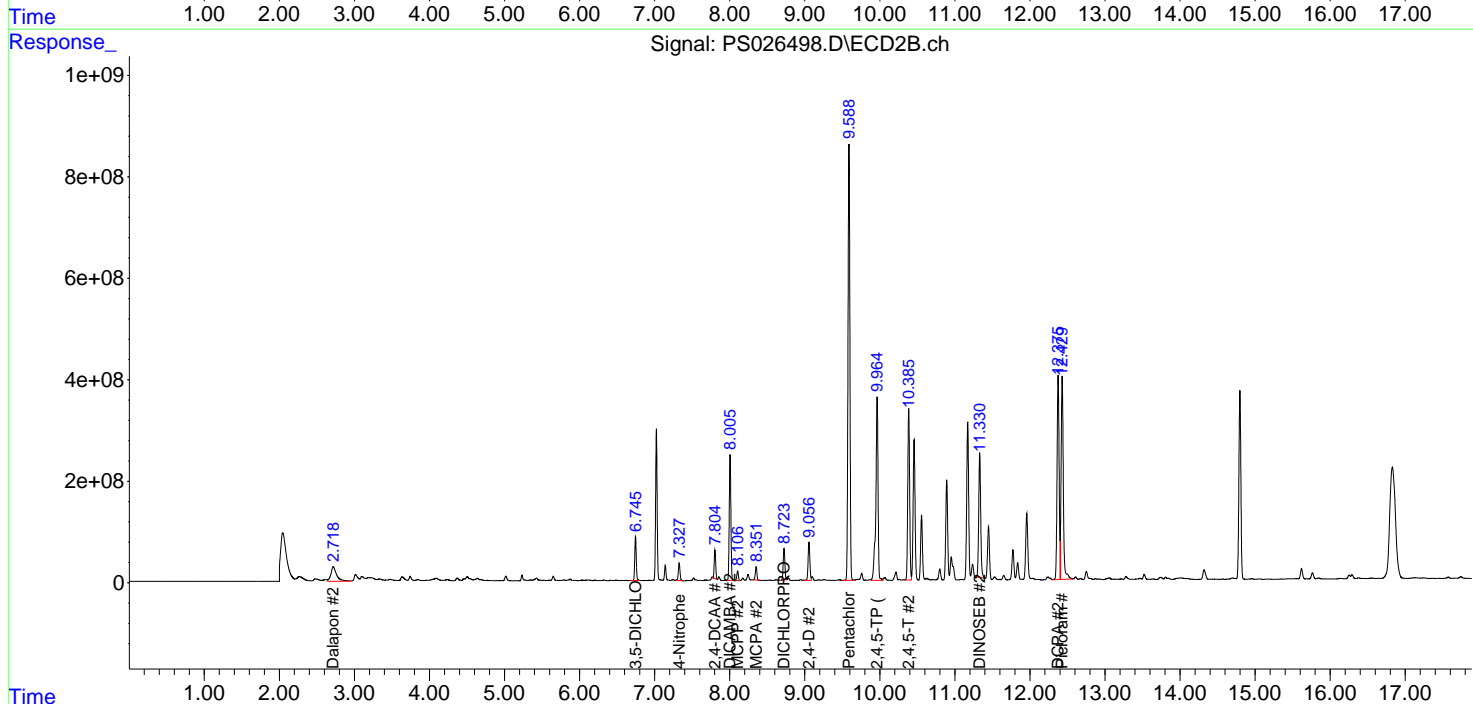
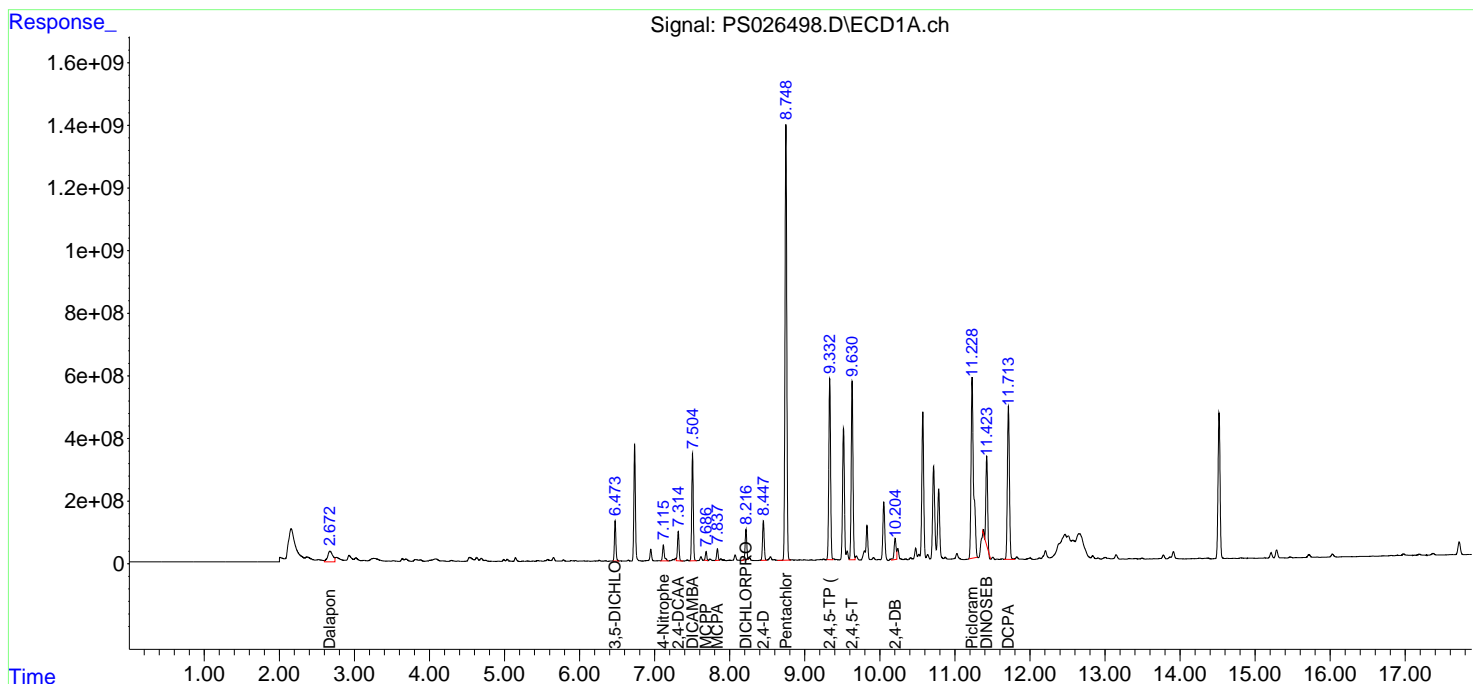
(f)=RT Delta > 1/2 Window (#)=Amounts differ by > 25% (m)=manual int.

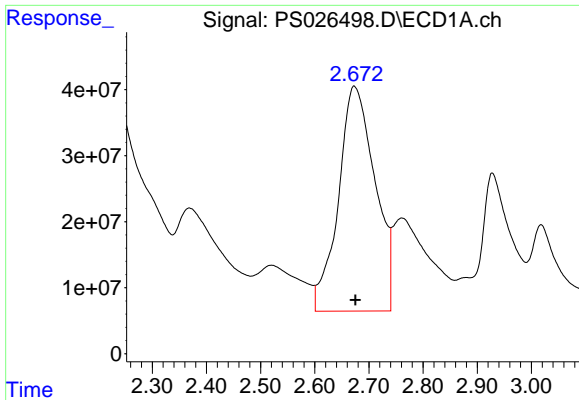
Data Path : Z:\pestpcbsrv\HPCHEM1\ECD_S\Data\PS041924\
 Data File : PS026498.D
 Signal(s) : Signal #1: ECD1A.ch Signal #2: ECD2B.ch
 Acq On : 19 Apr 2024 20:09
 Operator : AR\AJ
 Sample : PB160359BS
 Misc :
 ALS Vial : 21 Sample Multiplier: 1

Instrument :
 ECD_S
 ClientSampleId :

Integration File signal 1: autoint1.e
 Integration File signal 2: autoint2.e
 Quant Time: Apr 20 04:40:23 2024
 Quant Method : Z:\pestpcbsrv\HPCHEM1\ECD_S\Method\PS041924.M
 Quant Title : 8080.M
 QLast Update : Fri Apr 19 12:45:38 2024
 Response via : Initial Calibration
 Integrator: ChemStation

Volume Inj. : 2 µl
 Signal #1 Phase : Rtx-CLPesticides Signal #2 Phase: Rtx-CLPesticides2
 Signal #1 Info : 30M x 0.32mm x0.5 Signal #2 Info : 30M x 0.32mm x 0.25µm

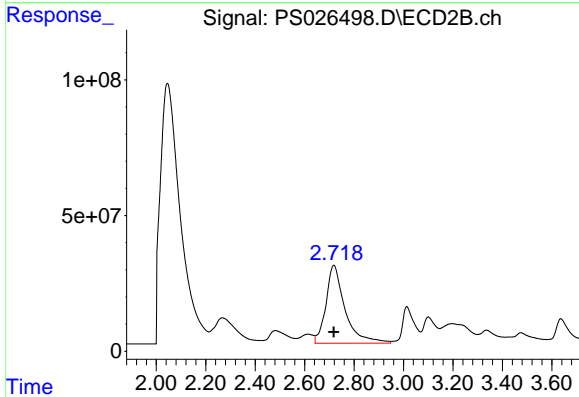




#1 Dalapon

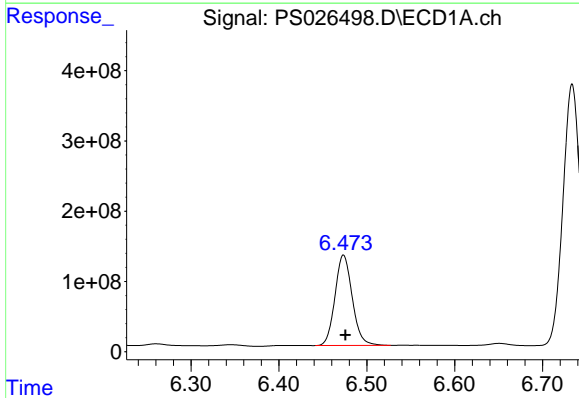
R.T.: 2.673 min
 Delta R.T.: -0.002 min
 Response: 1602901200
 Conc: 422.49 ng/ml

Instrument :
 ECD_S
 ClientSampleId :



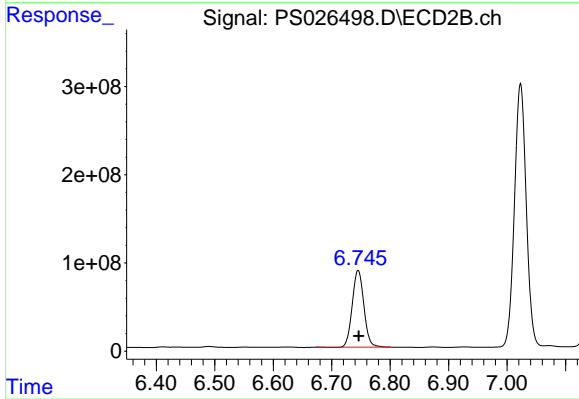
#1 Dalapon

R.T.: 2.718 min
 Delta R.T.: 0.000 min
 Response: 1533412275
 Conc: 541.49 ng/ml



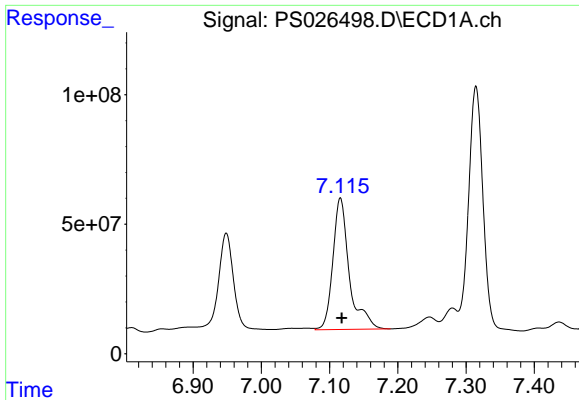
#2 3,5-DICHLOROBENZOIC ACID

R.T.: 6.473 min
 Delta R.T.: -0.002 min
 Response: 1757775707
 Conc: 521.16 ng/ml



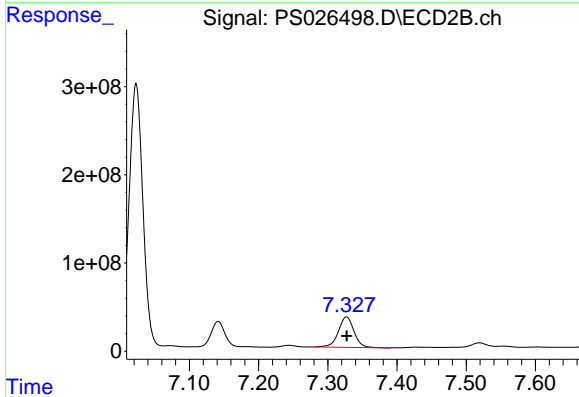
#2 3,5-DICHLOROBENZOIC ACID

R.T.: 6.745 min
 Delta R.T.: 0.000 min
 Response: 1199035813
 Conc: 494.16 ng/ml

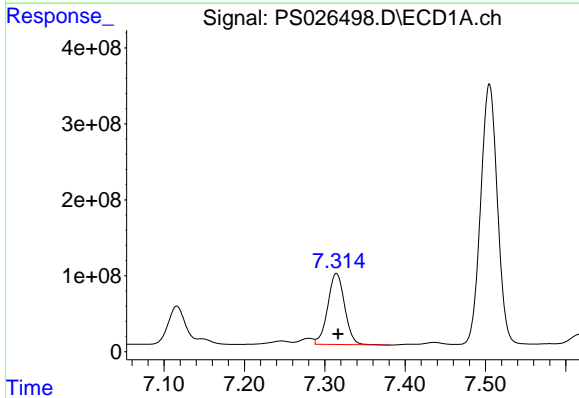


#3 4-Nitrophenol
 R.T.: 7.116 min
 Delta R.T.: -0.002 min
 Response: 851308938
 Conc: 524.76 ng/ml

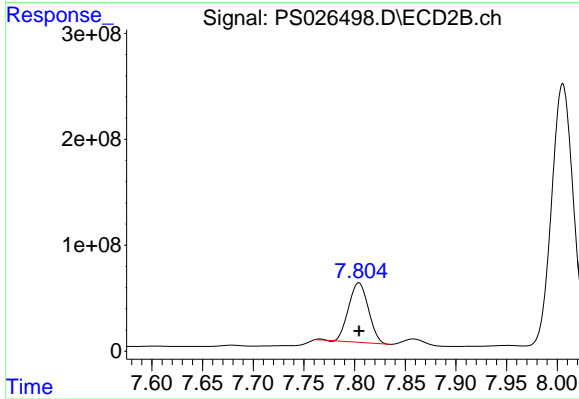
Instrument :
 ECD_S
 ClientSampleId :



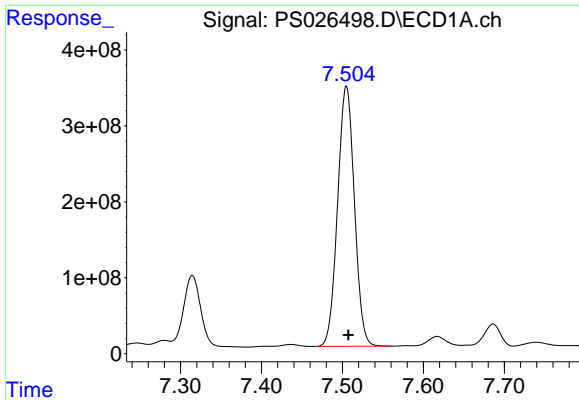
#3 4-Nitrophenol
 R.T.: 7.327 min
 Delta R.T.: 0.000 min
 Response: 534924410
 Conc: 444.99 ng/ml



#4 2,4-DCAA
 R.T.: 7.315 min
 Delta R.T.: -0.002 min
 Response: 1367580155
 Conc: 555.84 ng/ml



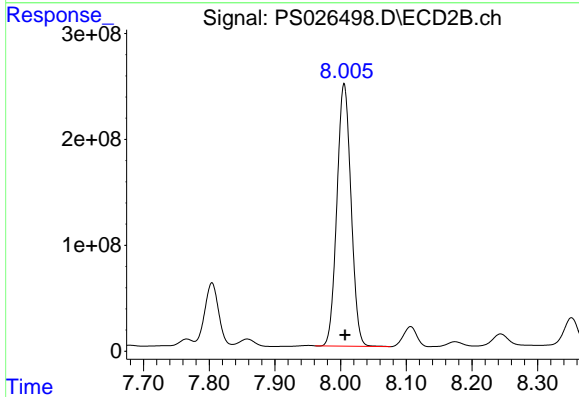
#4 2,4-DCAA
 R.T.: 7.804 min
 Delta R.T.: 0.000 min
 Response: 768505773
 Conc: 433.46 ng/ml



#5 DICAMBA

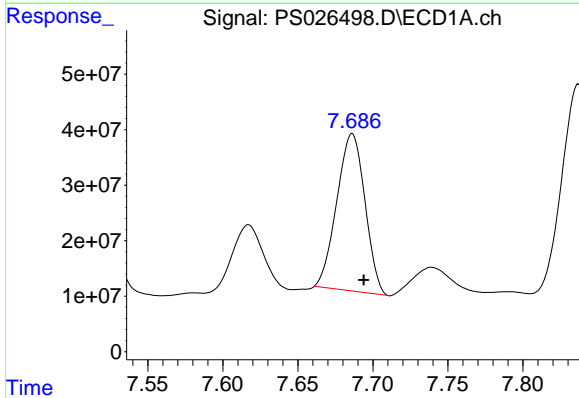
R.T.: 7.505 min
 Delta R.T.: -0.002 min
 Response: 4938362122
 Conc: 490.28 ng/ml

Instrument :
 ECD_S
 ClientSampleId :



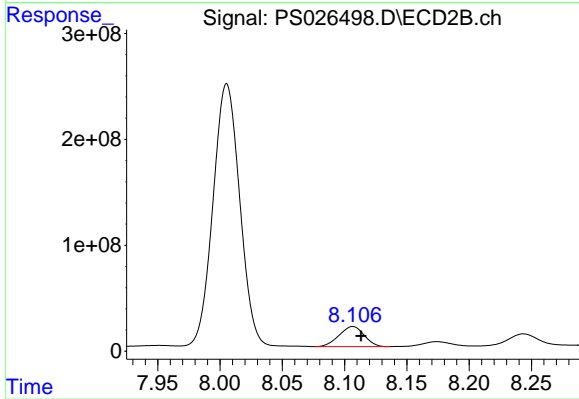
#5 DICAMBA

R.T.: 8.005 min
 Delta R.T.: -0.002 min
 Response: 3692789990
 Conc: 466.17 ng/ml



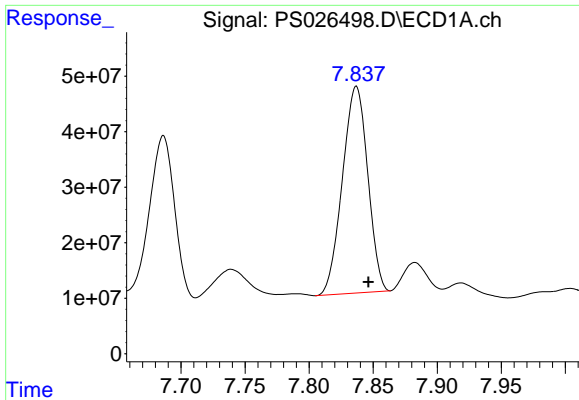
#6 MCPP

R.T.: 7.686 min
 Delta R.T.: -0.008 min
 Response: 369200138
 Conc: 50.28 ug/ml



#6 MCPP

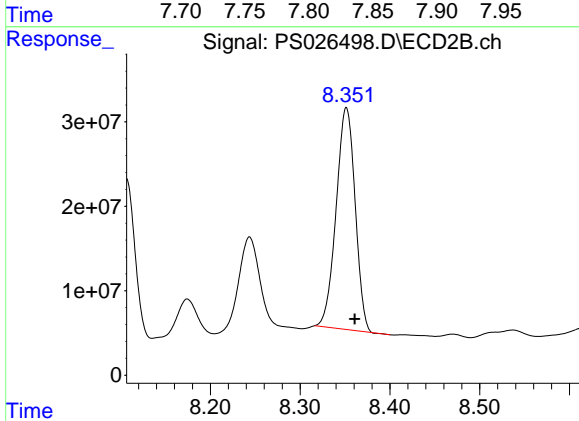
R.T.: 8.107 min
 Delta R.T.: -0.007 min
 Response: 265893476
 Conc: 47.81 ug/ml



#7 MCPA

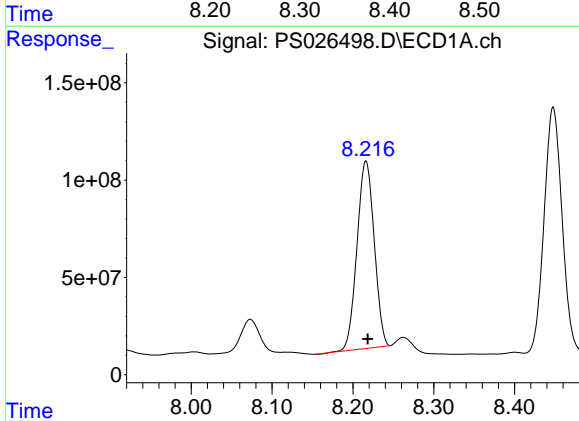
R.T.: 7.837 min
 Delta R.T.: -0.010 min
 Response: 512092407
 Conc: 47.66 ug/ml

Instrument :
 ECD_S
 ClientSampleId :



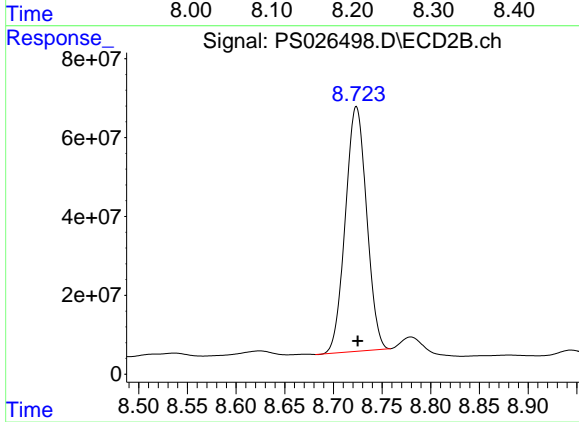
#7 MCPA

R.T.: 8.352 min
 Delta R.T.: -0.009 min
 Response: 385502097
 Conc: 47.52 ug/ml



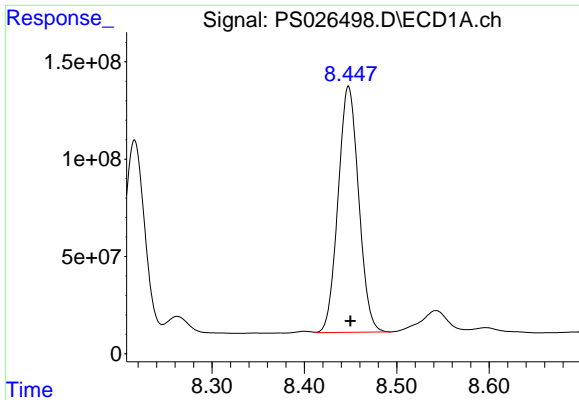
#8 DICHLORPROP

R.T.: 8.216 min
 Delta R.T.: -0.002 min
 Response: 1424182290
 Conc: 485.08 ng/ml



#8 DICHLORPROP

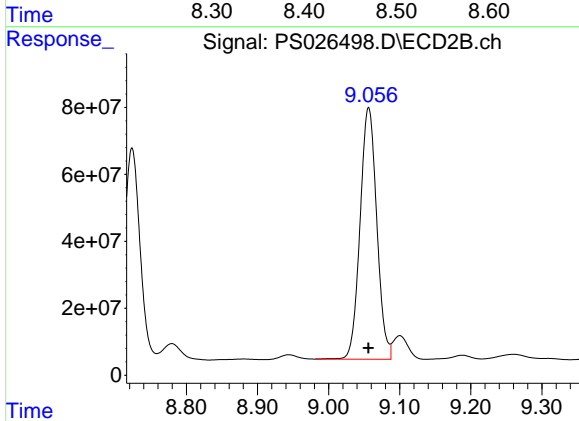
R.T.: 8.724 min
 Delta R.T.: -0.001 min
 Response: 943842556
 Conc: 449.65 ng/ml



#9 2,4-D

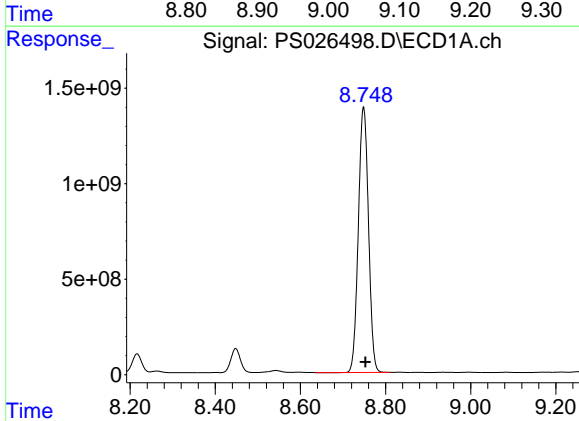
R.T.: 8.448 min
Delta R.T.: -0.002 min
Response: 1956375699
Conc: 601.43 ng/ml

Instrument :
ECD_S
ClientSampleId :



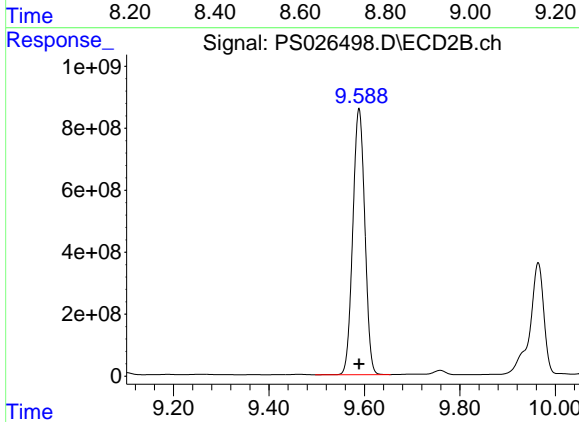
#9 2,4-D

R.T.: 9.056 min
Delta R.T.: 0.000 min
Response: 1226684387
Conc: 533.84 ng/ml



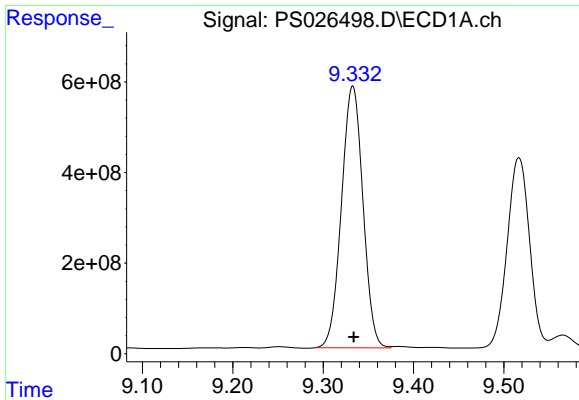
#10 Pentachlorophenol

R.T.: 8.748 min
Delta R.T.: -0.005 min
Response: 22954896771
Conc: 558.87 ng/ml



#10 Pentachlorophenol

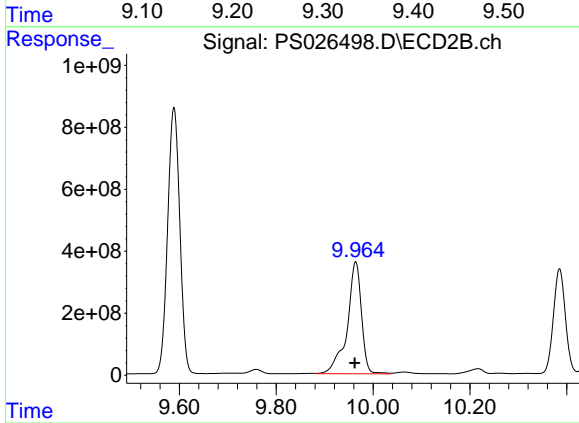
R.T.: 9.589 min
Delta R.T.: 0.000 min
Response: 14987298948
Conc: 499.53 ng/ml



#11 2,4,5-TP (SILVEX)

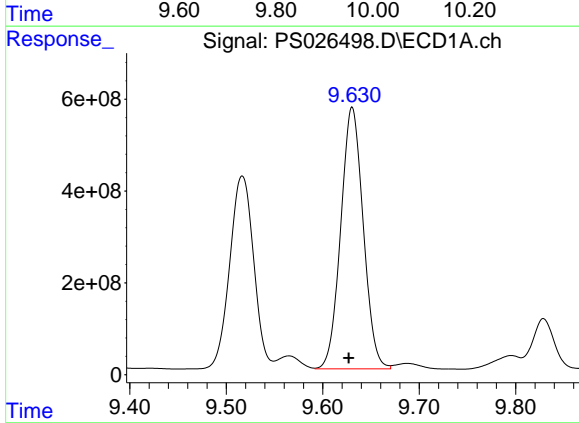
R.T.: 9.333 min
 Delta R.T.: 0.000 min
 Response: 9540536186
 Conc: 567.43 ng/ml

Instrument :
 ECD_S
 ClientSampleId :



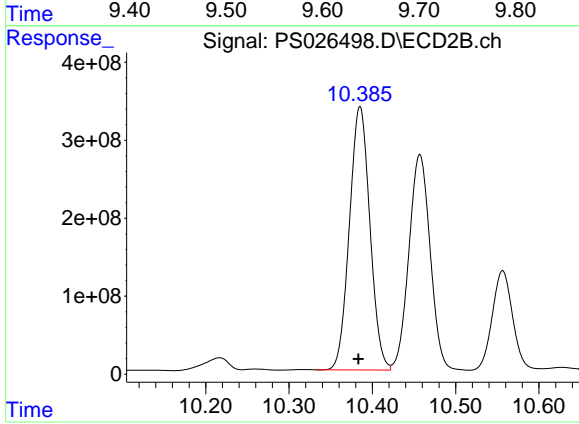
#11 2,4,5-TP (SILVEX)

R.T.: 9.964 min
 Delta R.T.: 0.002 min
 Response: 7407438132
 Conc: 612.62 ng/ml



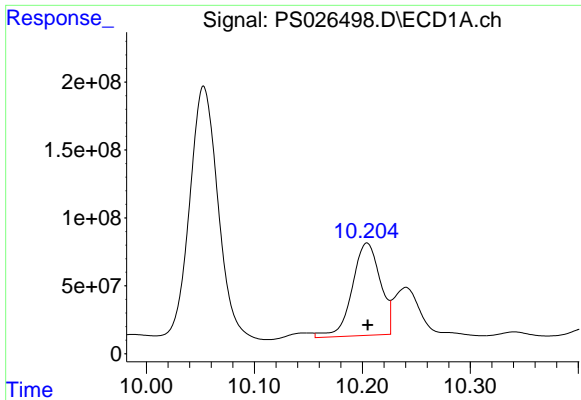
#12 2,4,5-T

R.T.: 9.630 min
 Delta R.T.: 0.004 min
 Response: 9240210842
 Conc: 526.74 ng/ml



#12 2,4,5-T

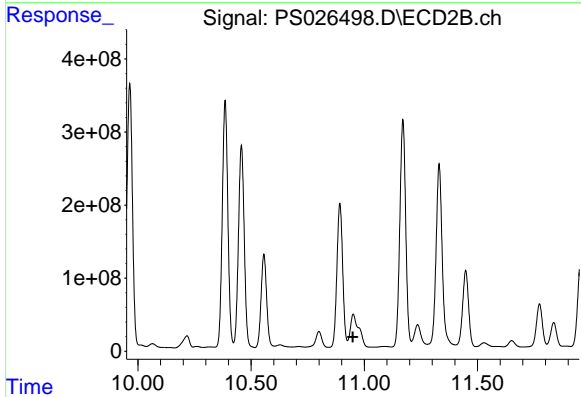
R.T.: 10.385 min
 Delta R.T.: 0.002 min
 Response: 5773598305
 Conc: 472.85 ng/ml



#13 2,4-DB

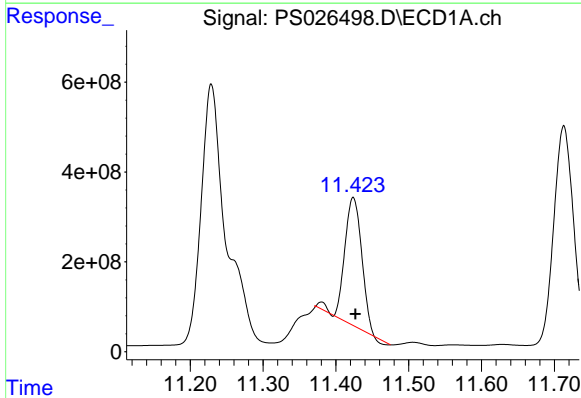
R.T.: 10.204 min
 Delta R.T.: 0.000 min
 Response: 1231723167
 Conc: 493.22 ng/ml

Instrument :
 ECD_S
 ClientSampleId :



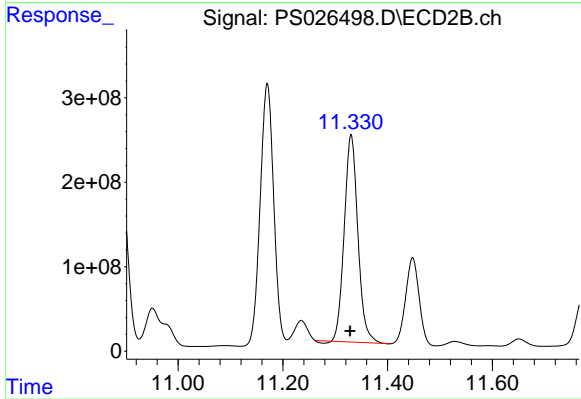
#13 2,4-DB

R.T.: 10.951 min
 Delta R.T.: 0.002 min
 Response: -3614145947
 Conc: N.D.



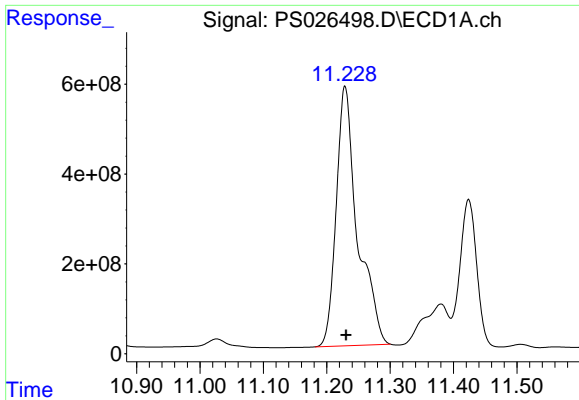
#14 DINOSEB

R.T.: 11.424 min
 Delta R.T.: -0.003 min
 Response: 4603234004
 Conc: 410.65 ng/ml



#14 DINOSEB

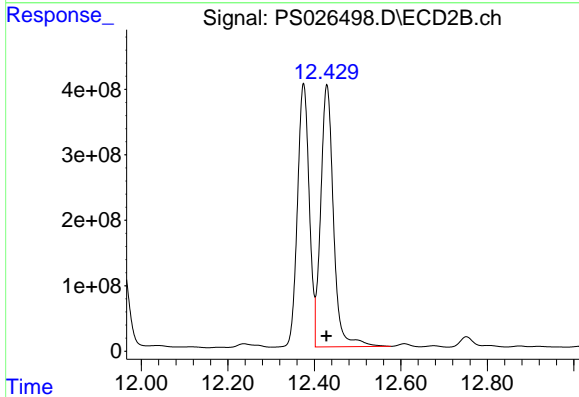
R.T.: 11.330 min
 Delta R.T.: 0.002 min
 Response: 4408308905
 Conc: 536.73 ng/ml



#15 Picloram

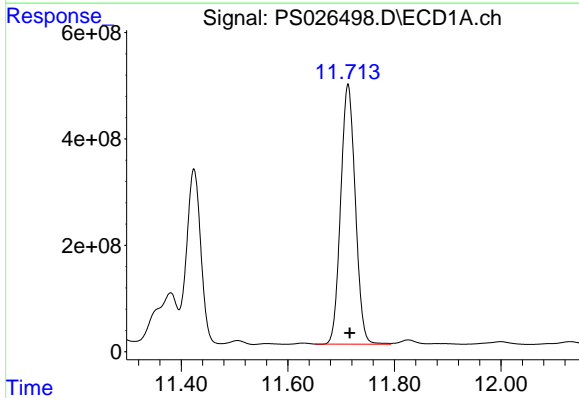
R.T.: 11.229 min
 Delta R.T.: -0.002 min
 Response: 13505617388
 Conc: 581.92 ng/ml

Instrument :
 ECD_S
 ClientSampleId :



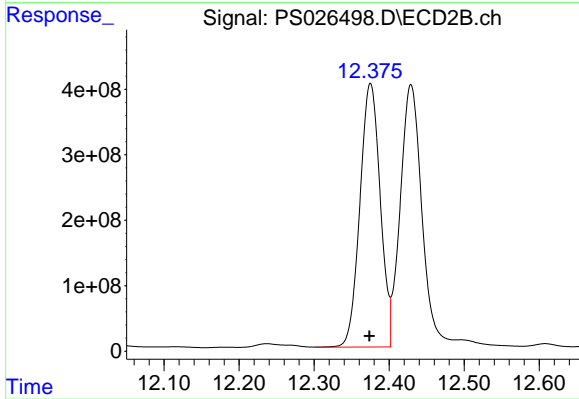
#15 Picloram

R.T.: 12.429 min
 Delta R.T.: 0.001 min
 Response: 8213513819
 Conc: 448.05 ng/ml



#16 DCPA

R.T.: 11.713 min
 Delta R.T.: -0.003 min
 Response: 9301438017
 Conc: 477.70 ng/ml



#16 DCPA

R.T.: 12.375 min
 Delta R.T.: 0.001 min
 Response: 7563364440
 Conc: 508.49 ng/ml