

Data Path : Z:\pestpcbsrv\HPCHEM1\ECD_S\Data\PS042122\
 Data File : PS019116.D
 Signal(s) : Signal #1: ECD1A.ch Signal #2: ECD2B.ch
 Acq On : 21 Apr 2022 14:58
 Operator : AJ\MA
 Sample : HSTDCCC750
 Misc :
 ALS Vial : 3 Sample Multiplier: 1

Instrument :
 ECD_S
 ClientSampleId :
 HSTDCCC750

Integration File signal 1: autoint1.e
 Integration File signal 2: autoint2.e
 Quant Time: Apr 22 01:25:42 2022
 Quant Method : Z:\pestpcbsrv\HPCHEM1\ECD_S\Method\PS041822.M
 Quant Title : 8080.M
 QLast Update : Mon Apr 18 17:28:16 2022
 Response via : Initial Calibration
 Integrator: ChemStation

Volume Inj. : 2 µl
 Signal #1 Phase : Rtx-CLPesticides Signal #2 Phase: Rtx-CLPesticides2
 Signal #1 Info : 30M x 0.32mm x0.5 Signal #2 Info : 30M x 0.32mm x 0.25µm

	Compound	RT#1	RT#2	Resp#1	Resp#2	ng/ml	ng/ml

System Monitoring Compounds							
4) S	2,4-DCAA	7.219	6.797	2718.0E6	568.9E6	726.734	783.700
Target Compounds							
1) T	Dalapon	3.026	2.530	3054.7E6	633.6E6	680.596	682.429
2) T	3,5-DICHL...	6.429	5.974	3572.6E6	809.4E6	718.468	722.443
3) T	4-Nitroph...	7.049	6.413	1267.9E6	301.1E6	968.131	757.619
5) T	DICAMBA	7.410	6.964	10179.2E6	2379.2E6	737.557	735.319
6) T	MCP P	7.582	7.062	812.2E6	187.4E6	74.548	72.884
7) T	MCPA	7.731	7.276	1103.3E6	264.4E6	73.212	72.798
8) T	DICHLORPROP	8.104	7.586	2496.5E6	608.0E6	700.922	727.598
9) T	2,4-D	8.333	7.878	2974.5E6	719.4E6	724.792	758.017
10) T	Pentachlo...	8.643	8.306	32722.1E6	7921.4E6	709.629	732.812
11) T	2,4,5-TP ...	9.194	8.667	13479.9E6	3483.0E6	676.904	739.719
12) T	2,4,5-T	9.480	9.045	13511.5E6	3301.0E6	679.953	764.405
13) T	2,4-DB	10.032	9.551	2620.7E6	433.3E6	744.151	781.644
14) T	DINOSEB	11.191	9.879	10152.9E6	2403.6E6	663.558	716.892
15) T	Picloram	11.016	10.861	18769.2E6	4314.6E6	700.432	728.688
16) T	DCPA	11.459	10.810	15998.2E6	4224.8E6	697.224	738.121

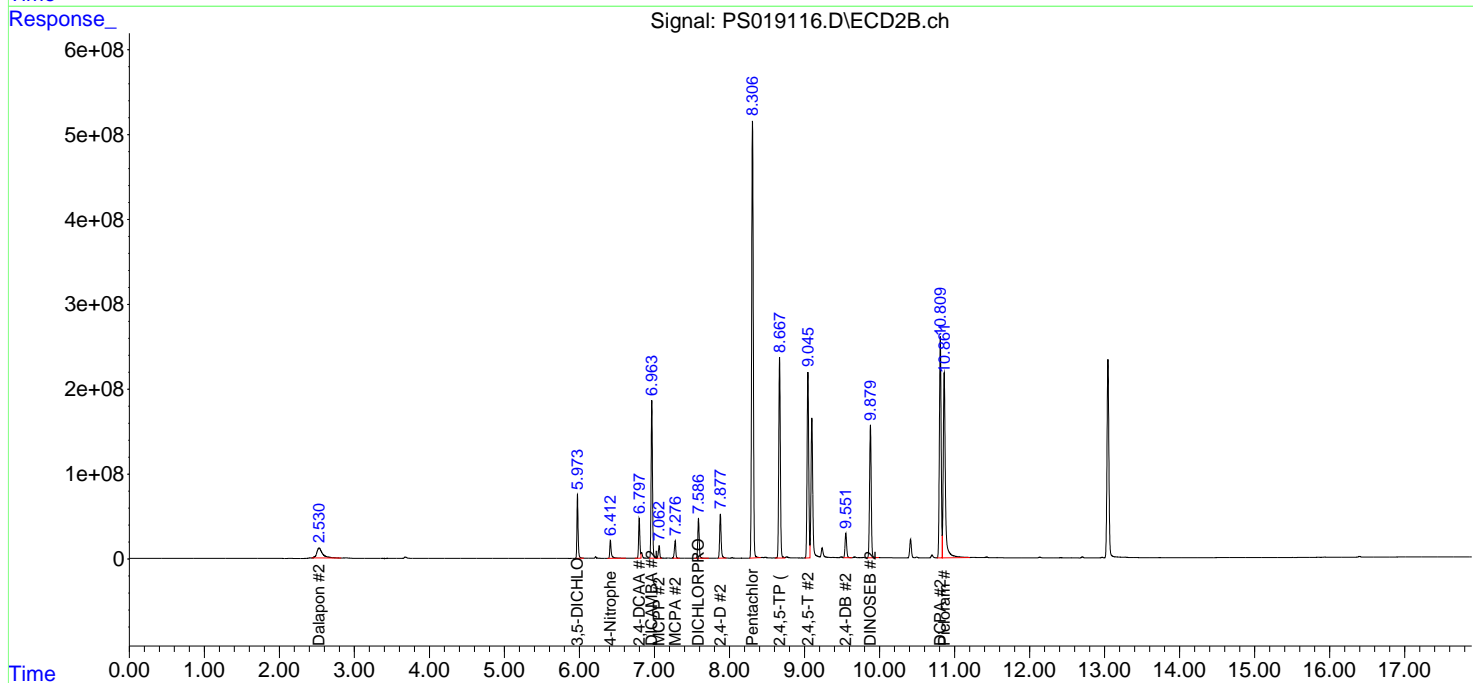
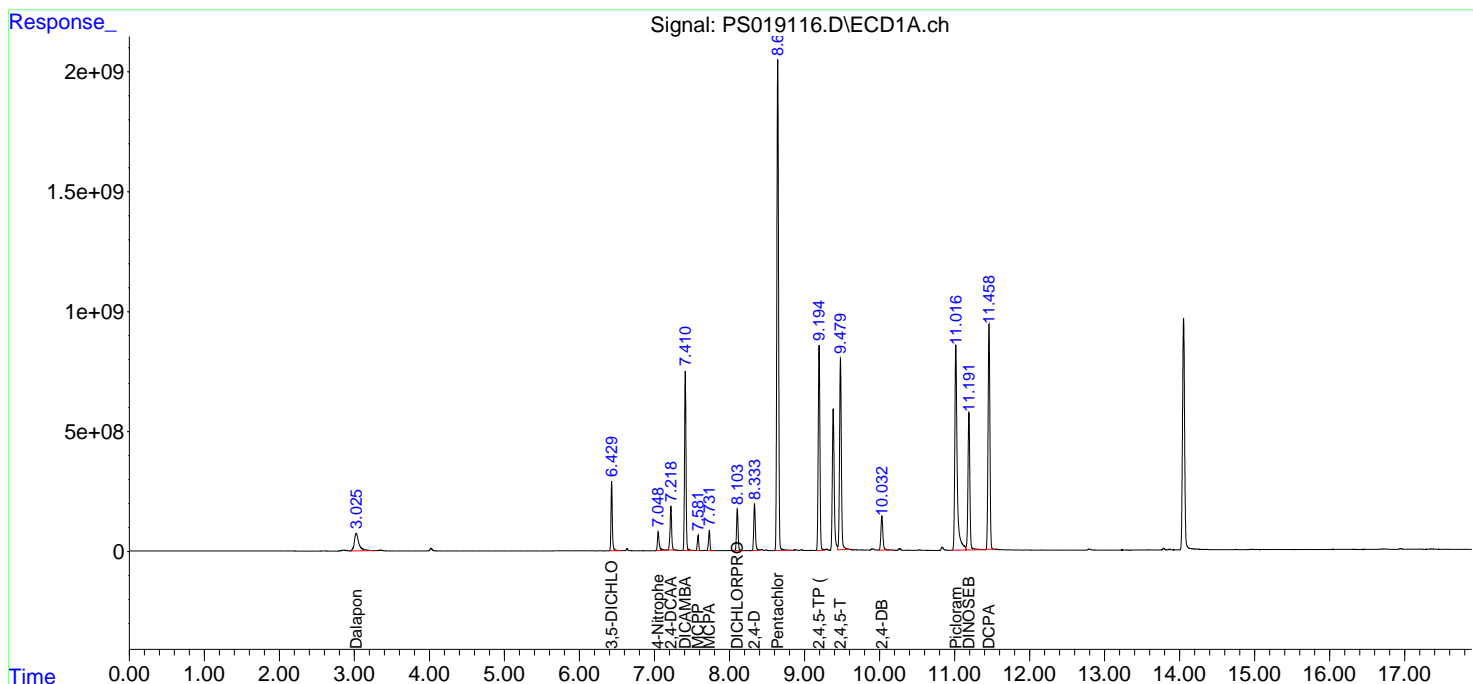
(f)=RT Delta > 1/2 Window (#)=Amounts differ by > 25% (m)=manual int.

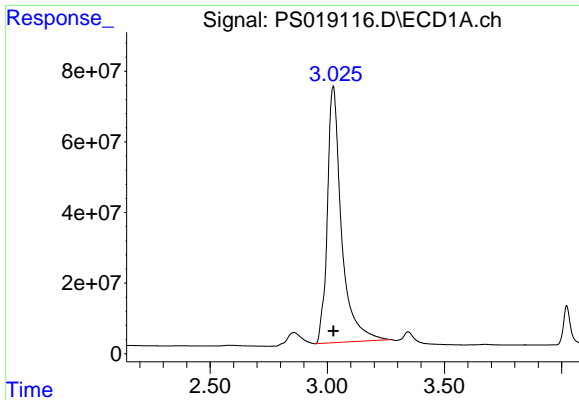
Data Path : Z:\pestpcbsrv\HPCHEM1\ECD_S\Data\PS042122\
 Data File : PS019116.D
 Signal(s) : Signal #1: ECD1A.ch Signal #2: ECD2B.ch
 Acq On : 21 Apr 2022 14:58
 Operator : AJ\MA
 Sample : HSTDCCC750
 Misc :
 ALS Vial : 3 Sample Multiplier: 1

Instrument :
 ECD_S
 ClientSampleId :
 HSTDCCC750

Integration File signal 1: autoint1.e
 Integration File signal 2: autoint2.e
 Quant Time: Apr 22 01:25:42 2022
 Quant Method : Z:\pestpcbsrv\HPCHEM1\ECD_S\Method\PS041822.M
 Quant Title : 8080.M
 QLast Update : Mon Apr 18 17:28:16 2022
 Response via : Initial Calibration
 Integrator: ChemStation

Volume Inj. : 2 µl
 Signal #1 Phase : Rtx-CLPesticides Signal #2 Phase: Rtx-CLPesticides2
 Signal #1 Info : 30M x 0.32mm x0.5 Signal #2 Info : 30M x 0.32mm x 0.25µm

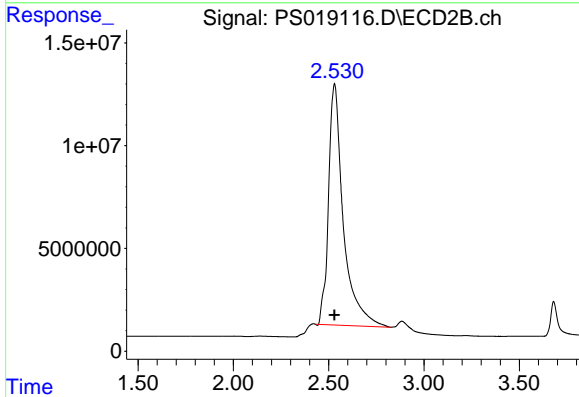




#1 Dalapon

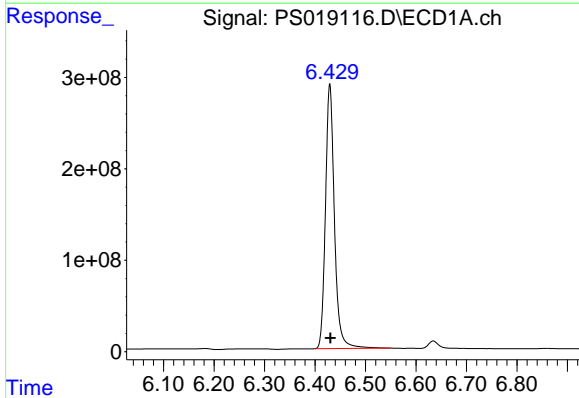
R.T.: 3.026 min
 Delta R.T.: 0.000 min
 Response: 3054712305
 Conc: 680.60 ng/ml

Instrument :
 ECD_S
 ClientSampleId :
 HSTDCCC750



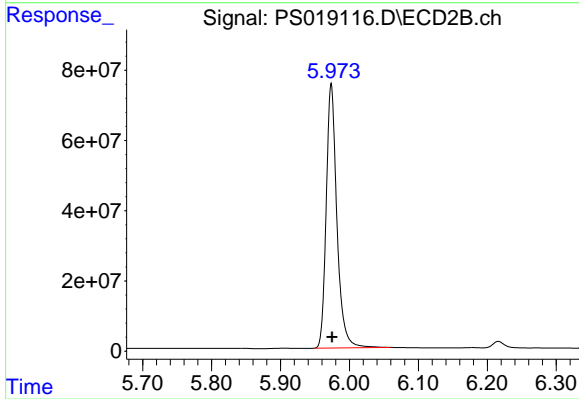
#1 Dalapon

R.T.: 2.530 min
 Delta R.T.: 0.000 min
 Response: 633615300
 Conc: 682.43 ng/ml



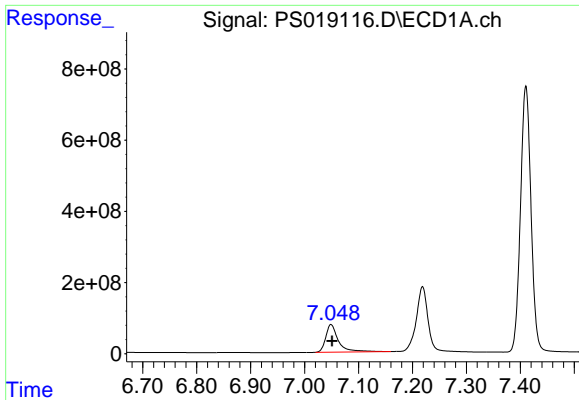
#2 3,5-DICHLOROBENZOIC ACID

R.T.: 6.429 min
 Delta R.T.: -0.001 min
 Response: 3572638524
 Conc: 718.47 ng/ml



#2 3,5-DICHLOROBENZOIC ACID

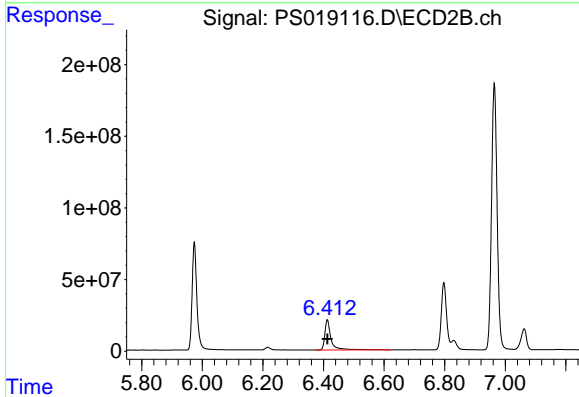
R.T.: 5.974 min
 Delta R.T.: -0.001 min
 Response: 809402611
 Conc: 722.44 ng/ml



#3 4-Nitrophenol

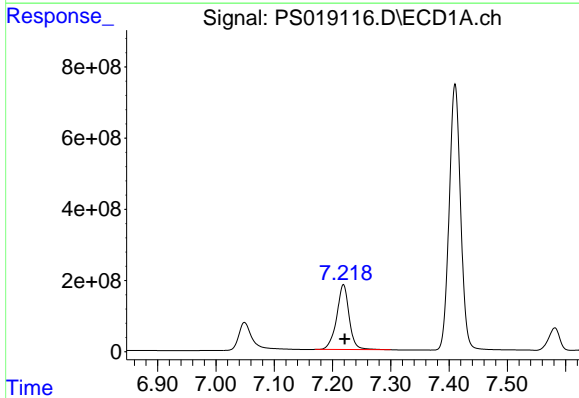
R.T.: 7.049 min
 Delta R.T.: -0.002 min
 Response: 1267883403
 Conc: 968.13 ng/ml

Instrument :
 ECD_S
 ClientSampleId :
 HSTDCCC750



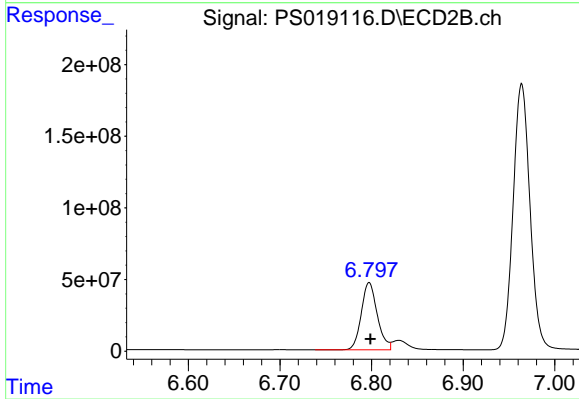
#3 4-Nitrophenol

R.T.: 6.413 min
 Delta R.T.: 0.000 min
 Response: 301133293
 Conc: 757.62 ng/ml



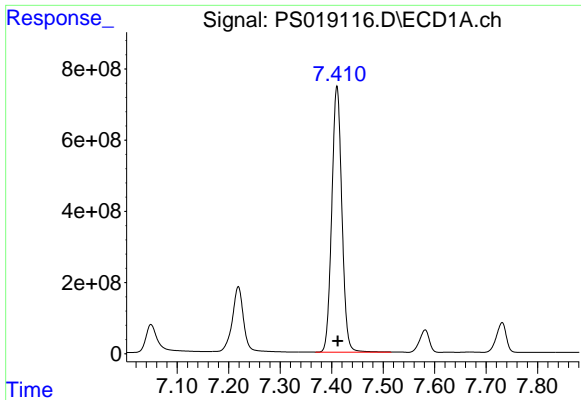
#4 2,4-DCAA

R.T.: 7.219 min
 Delta R.T.: -0.002 min
 Response: 2718022305
 Conc: 726.73 ng/ml



#4 2,4-DCAA

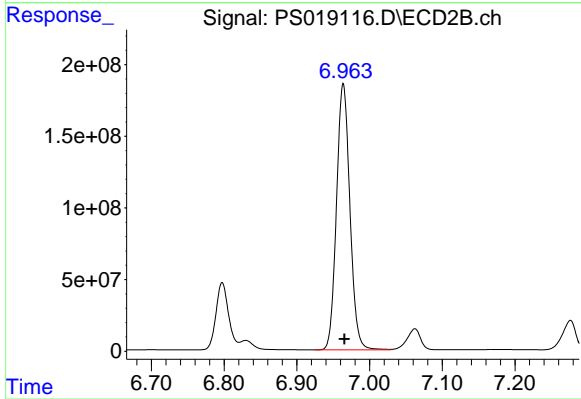
R.T.: 6.797 min
 Delta R.T.: -0.001 min
 Response: 568869834
 Conc: 783.70 ng/ml



#5 DICAMBA

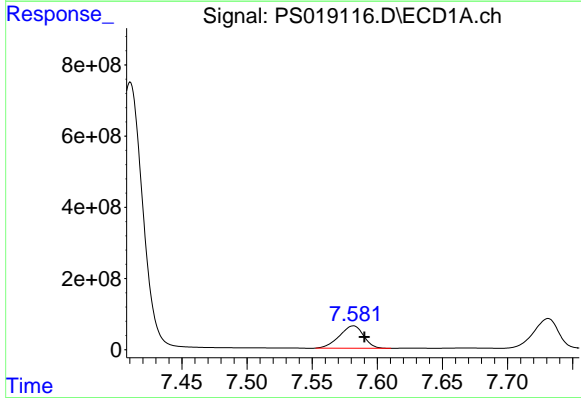
R.T.: 7.410 min
 Delta R.T.: -0.002 min
 Response: 10179187332
 Conc: 737.56 ng/ml

Instrument :
 ECD_S
 ClientSampleId :
 HSTDCCC750



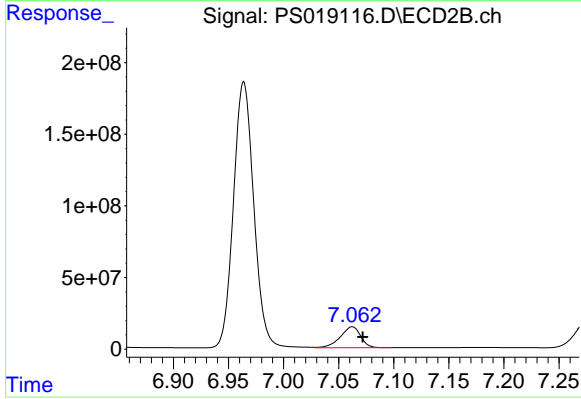
#5 DICAMBA

R.T.: 6.964 min
 Delta R.T.: -0.002 min
 Response: 2379162342
 Conc: 735.32 ng/ml



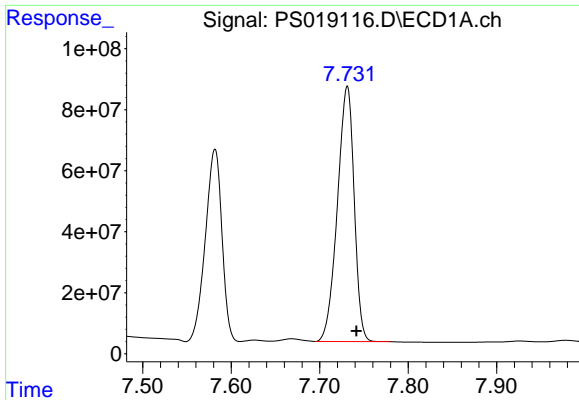
#6 MCP

R.T.: 7.582 min
 Delta R.T.: -0.008 min
 Response: 812179238
 Conc: 74.55 ug/ml



#6 MCP

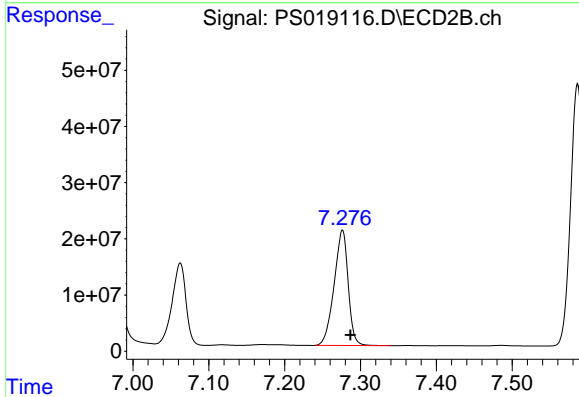
R.T.: 7.062 min
 Delta R.T.: -0.009 min
 Response: 187378180
 Conc: 72.88 ug/ml



#7 MCPA

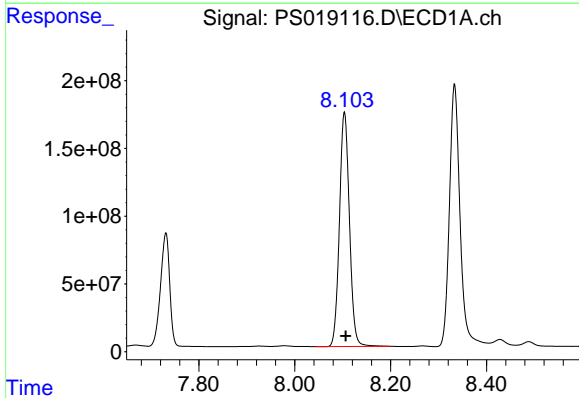
R.T.: 7.731 min
 Delta R.T.: -0.010 min
 Response: 1103280978
 Conc: 73.21 ug/ml

Instrument :
 ECD_S
 ClientSampleId :
 HSTDCCC750



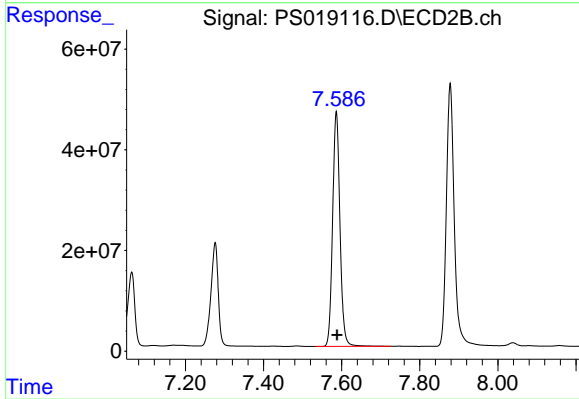
#7 MCPA

R.T.: 7.276 min
 Delta R.T.: -0.010 min
 Response: 264350642
 Conc: 72.80 ug/ml



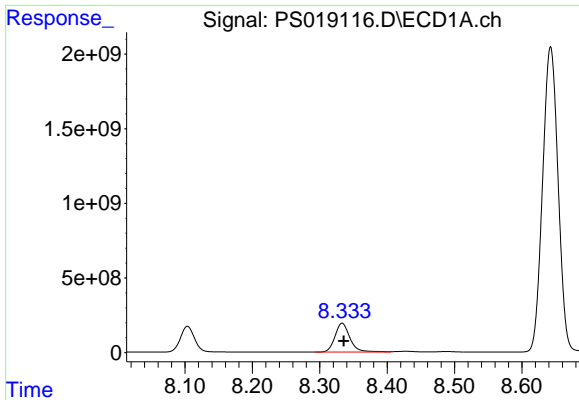
#8 DICHLORPROP

R.T.: 8.104 min
 Delta R.T.: -0.003 min
 Response: 2496520643
 Conc: 700.92 ng/ml



#8 DICHLORPROP

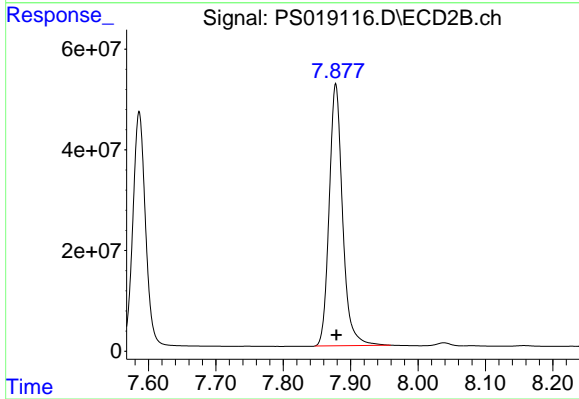
R.T.: 7.586 min
 Delta R.T.: -0.002 min
 Response: 608008724
 Conc: 727.60 ng/ml



#9 2,4-D

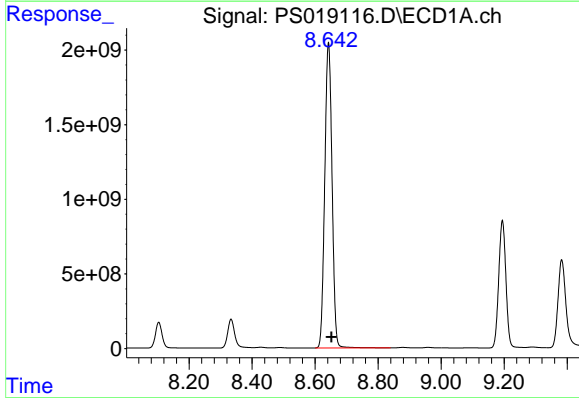
R.T.: 8.333 min
 Delta R.T.: -0.002 min
 Response: 2974503898
 Conc: 724.79 ng/ml

Instrument :
 ECD_S
 ClientSampleId :
 HSTDCCC750



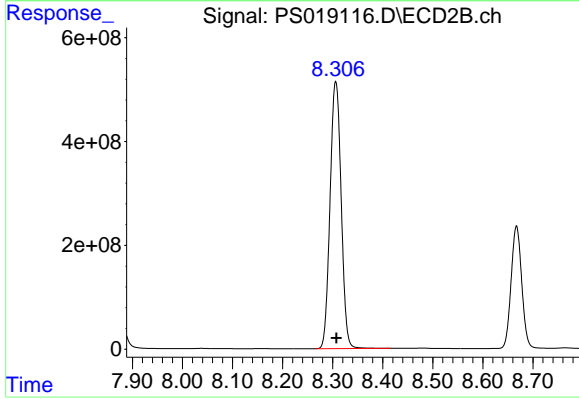
#9 2,4-D

R.T.: 7.878 min
 Delta R.T.: 0.000 min
 Response: 719437280
 Conc: 758.02 ng/ml



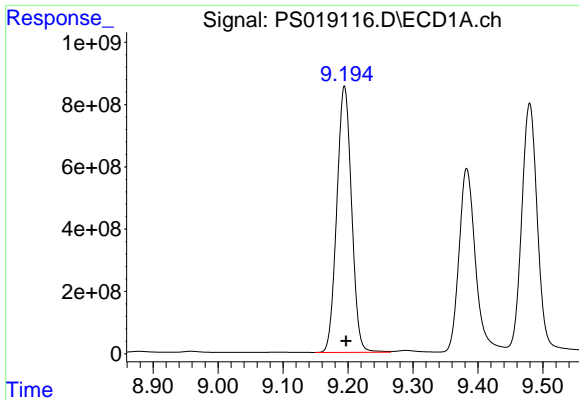
#10 Pentachlorophenol

R.T.: 8.643 min
 Delta R.T.: -0.009 min
 Response: 32722090799
 Conc: 709.63 ng/ml



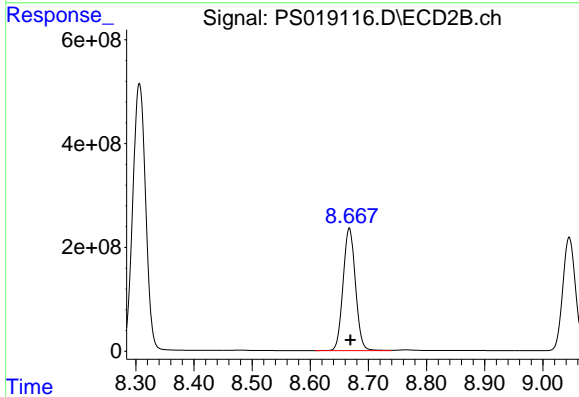
#10 Pentachlorophenol

R.T.: 8.306 min
 Delta R.T.: -0.001 min
 Response: 7921350560
 Conc: 732.81 ng/ml

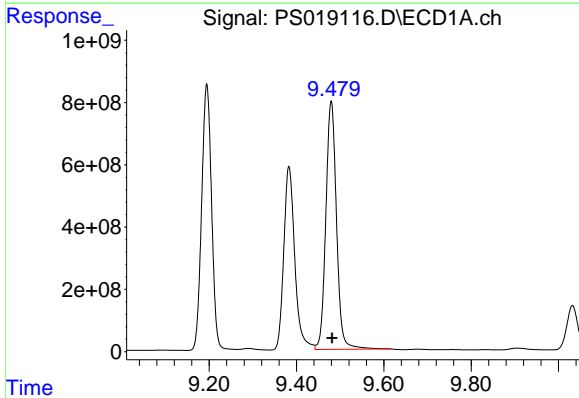


#11 2,4,5-TP (SILVEX)
 R.T.: 9.194 min
 Delta R.T.: -0.003 min
 Response: 13479912160
 Conc: 676.90 ng/ml

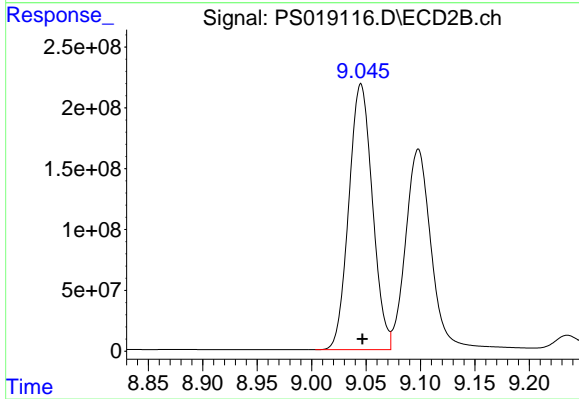
Instrument :
 ECD_S
 ClientSampleId :
 HSTDCCC750



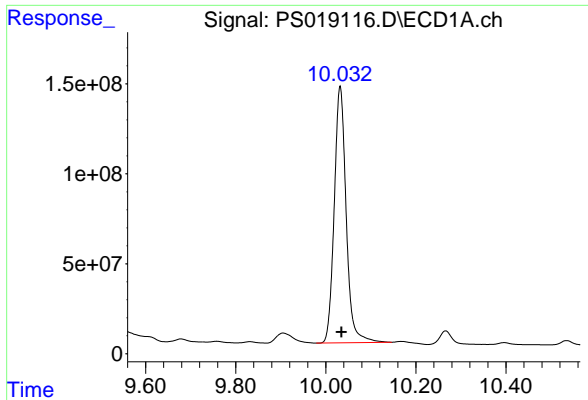
#11 2,4,5-TP (SILVEX)
 R.T.: 8.667 min
 Delta R.T.: -0.002 min
 Response: 3482990622
 Conc: 739.72 ng/ml



#12 2,4,5-T
 R.T.: 9.480 min
 Delta R.T.: -0.002 min
 Response: 13511496376
 Conc: 679.95 ng/ml



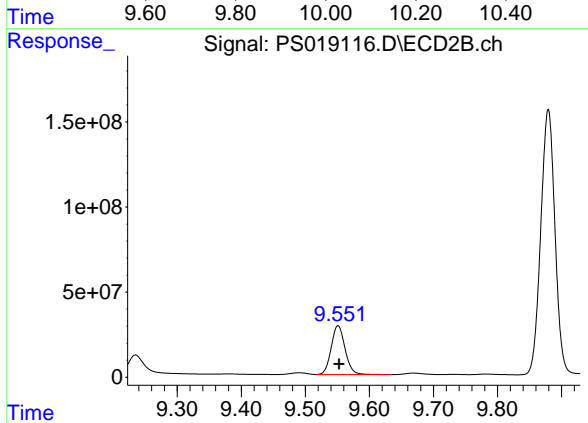
#12 2,4,5-T
 R.T.: 9.045 min
 Delta R.T.: -0.001 min
 Response: 3301006089
 Conc: 764.40 ng/ml



#13 2,4-DB

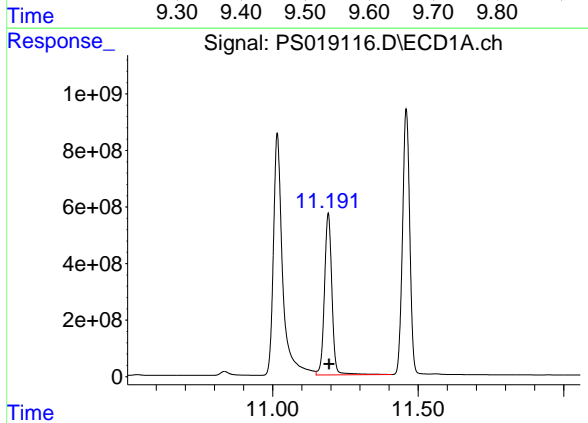
R.T.: 10.032 min
Delta R.T.: -0.002 min
Response: 2620688447
Conc: 744.15 ng/ml

Instrument :
ECD_S
ClientSampleId :
HSTDCCC750



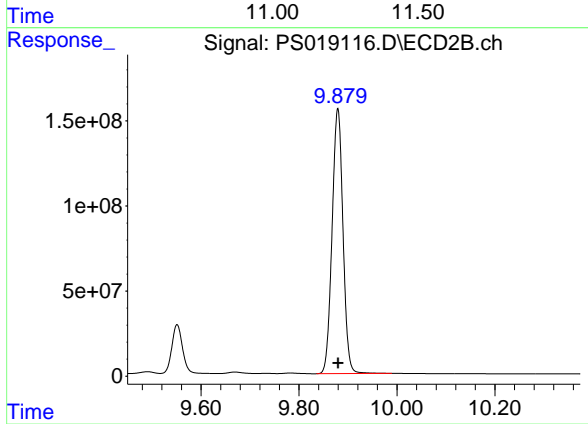
#13 2,4-DB

R.T.: 9.551 min
Delta R.T.: -0.002 min
Response: 433277232
Conc: 781.64 ng/ml



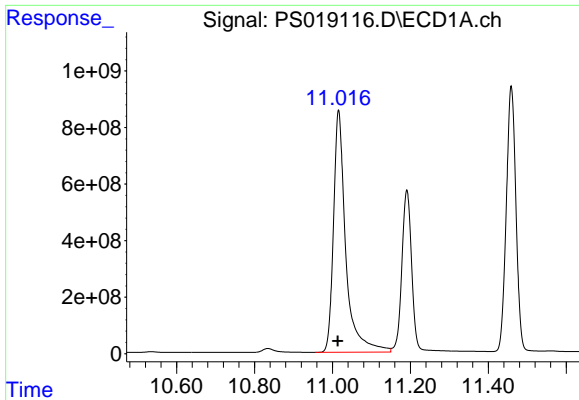
#14 DINOSEB

R.T.: 11.191 min
Delta R.T.: -0.003 min
Response: 10152893719
Conc: 663.56 ng/ml



#14 DINOSEB

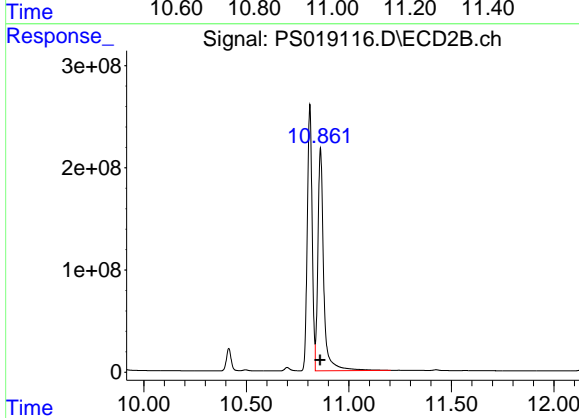
R.T.: 9.879 min
Delta R.T.: 0.000 min
Response: 2403633189
Conc: 716.89 ng/ml



#15 Picloram

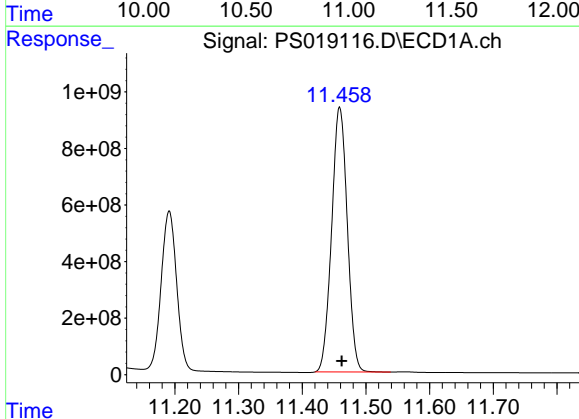
R.T.: 11.016 min
 Delta R.T.: 0.002 min
 Response: 18769197743
 Conc: 700.43 ng/ml

Instrument :
 ECD_S
 ClientSampleId :
 HSTDCCC750



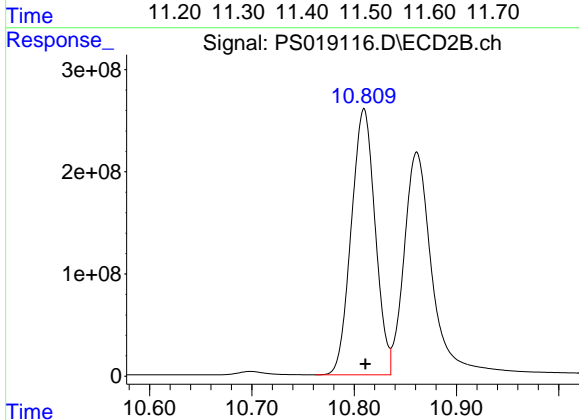
#15 Picloram

R.T.: 10.861 min
 Delta R.T.: 0.001 min
 Response: 4314564600
 Conc: 728.69 ng/ml



#16 DCPA

R.T.: 11.459 min
 Delta R.T.: -0.003 min
 Response: 15998181760
 Conc: 697.22 ng/ml



#16 DCPA

R.T.: 10.810 min
 Delta R.T.: -0.001 min
 Response: 4224770695
 Conc: 738.12 ng/ml