

Data Path : Z:\pestpcbsrv\HPCHEM1\ECD\_S\Data\PS042123\  
 Data File : PS022816.D  
 Signal(s) : Signal #1: ECD1A.ch Signal #2: ECD2B.ch  
 Acq On : 21 Apr 2023 20:35  
 Operator : AR\AJ  
 Sample : 02407-02  
 Misc :  
 ALS Vial : 21 Sample Multiplier: 1

Instrument :  
 ECD\_S  
 ClientSampleId :

Integration File signal 1: autoint1.e  
 Integration File signal 2: autoint2.e  
 Quant Time: Apr 21 21:55:47 2023  
 Quant Method : Z:\pestpcbsrv\HPCHEM1\ECD\_S\Method\PS041223.M  
 Quant Title : 8080.M  
 QLast Update : Wed Apr 12 14:05:56 2023  
 Response via : Initial Calibration  
 Integrator: ChemStation

Volume Inj. : 2 µl  
 Signal #1 Phase : Rtx-CLPesticides Signal #2 Phase: Rtx-CLPesticides2  
 Signal #1 Info : 30M x 0.32mm x0.5 Signal #2 Info : 30M x 0.32mm x 0.25µm

	Compound	RT#1	RT#2	Resp#1	Resp#2	ng/ml	ng/ml
-----							
System Monitoring Compounds							
4) S	2,4-DCAA	6.484	6.859	1412.0E6	462.4E6	567.131	453.813
Target Compounds							
1) T	Dalapon	2.508	2.537	222.6E6	547.8E6	75.376	346.031 #
2) T	3,5-DICHL...	5.829	6.035	22613198	5282486	6.692	3.388 #
3) T	4-Nitroph...	6.311	6.480	42576157	1515313	22.945	2.384 #
5) T	DICAMBA	6.581f	7.064	16448301	1923974	1.498	<MDL #
6) T	MCP P	6.777	7.133	6110753	1505770	<MDL	<MDL #
7) T	MCPA	6.920	7.335	25519524	4685977	2.150	<MDL #
8) T	DICHLORPROP	7.262	7.666	12689721	33990637	4.172	30.523 #
9) T	2,4-D	7.434	7.933	4605742	11490530	1.244	8.971 #
10) T	Pentachlo...	7.674	8.357	9223301	3957596	<MDL	<MDL #
11) T	2,4,5-TP ...	8.181	8.741	3042598	9484416	<MDL	1.521 #
12) T	2,4,5-T	8.493	9.110	8472419	7232023	<MDL	1.222 #
13) T	2,4-DB	9.009	9.623	950.7E6	24915718	222.473	33.254 #
14) T	DINOSEB	10.086	9.984	9263311	33890072	<MDL	7.676 #
15) T	Picloram	9.880	10.913	54690230	15719811	1.836	1.933
16) T	DCPA	10.336	10.870	44927767	11773425	2.010	1.695

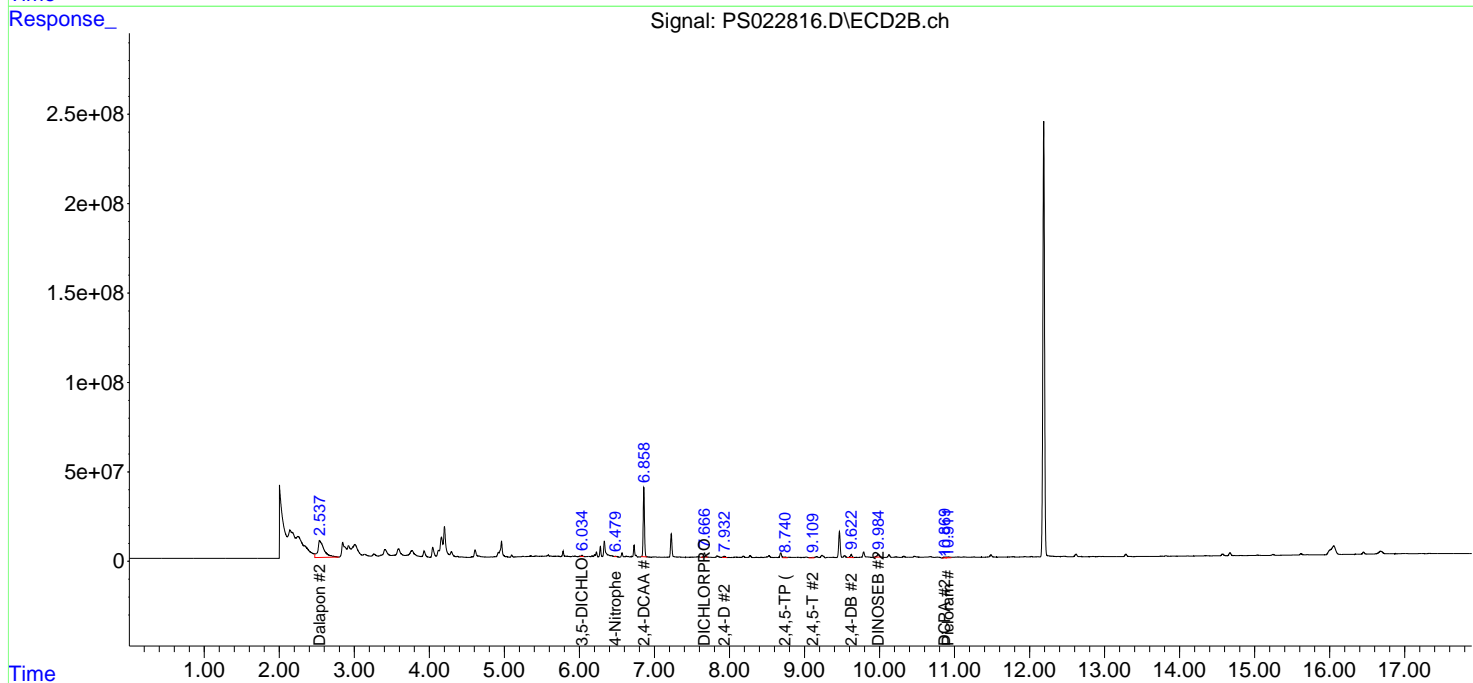
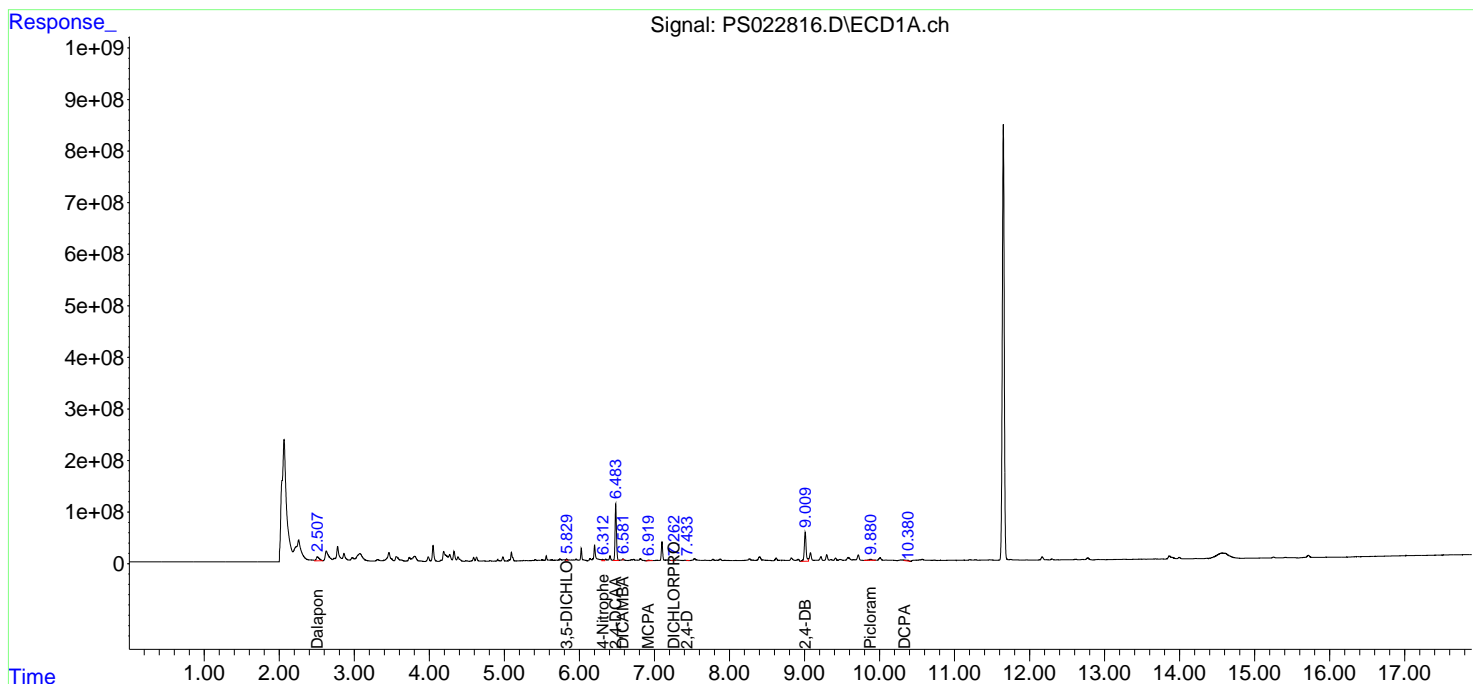
(f)=RT Delta > 1/2 Window (#)=Amounts differ by > 25% (m)=manual int.

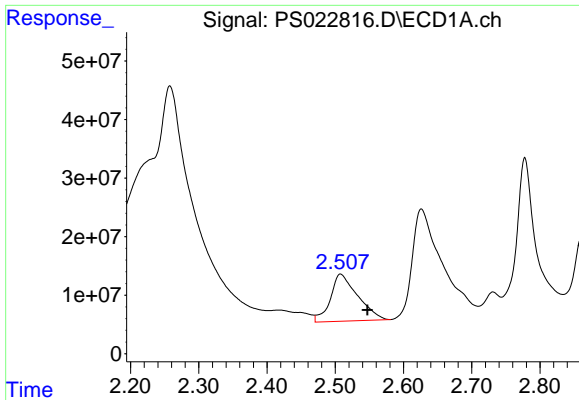
Data Path : Z:\pestpcbsrv\HPCHEM1\ECD\_S\Data\PS042123\  
 Data File : PS022816.D  
 Signal(s) : Signal #1: ECD1A.ch Signal #2: ECD2B.ch  
 Acq On : 21 Apr 2023 20:35  
 Operator : AR\AJ  
 Sample : 02407-02  
 Misc :  
 ALS Vial : 21 Sample Multiplier: 1

Instrument :  
 ECD\_S  
 ClientSampleId :

Integration File signal 1: autoint1.e  
 Integration File signal 2: autoint2.e  
 Quant Time: Apr 21 21:55:47 2023  
 Quant Method : Z:\pestpcbsrv\HPCHEM1\ECD\_S\Method\PS041223.M  
 Quant Title : 8080.M  
 QLast Update : Wed Apr 12 14:05:56 2023  
 Response via : Initial Calibration  
 Integrator: ChemStation

Volume Inj. : 2 µl  
 Signal #1 Phase : Rtx-CLPesticides Signal #2 Phase: Rtx-CLPesticides2  
 Signal #1 Info : 30M x 0.32mm x0.5 Signal #2 Info : 30M x 0.32mm x 0.25µm

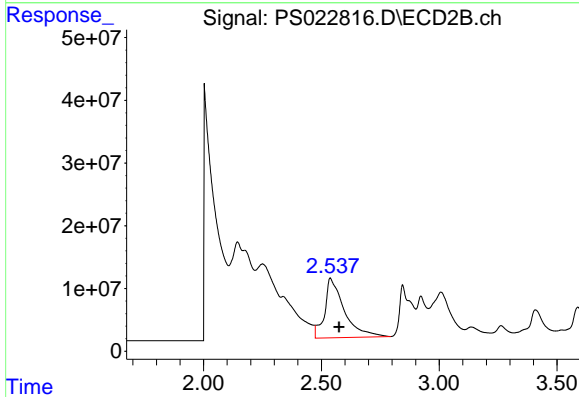




#1 Dalapon

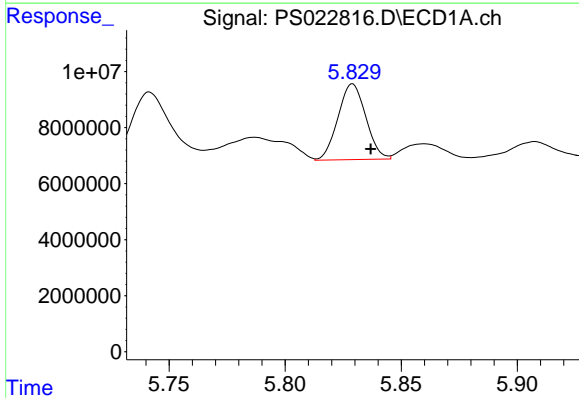
R.T.: 2.508 min  
 Delta R.T.: -0.039 min  
 Response: 222612639  
 Conc: 75.38 ng/ml

Instrument :  
 ECD\_S  
 ClientSampleId :



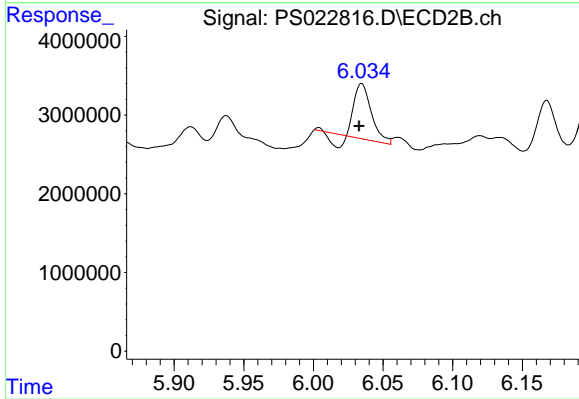
#1 Dalapon

R.T.: 2.537 min  
 Delta R.T.: -0.037 min  
 Response: 547781041  
 Conc: 346.03 ng/ml



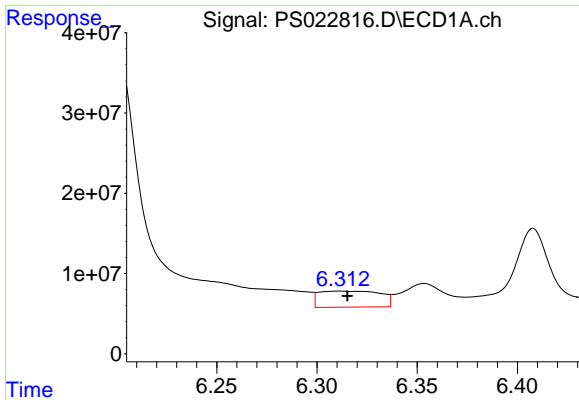
#2 3,5-DICHLOROBENZOIC ACID

R.T.: 5.829 min  
 Delta R.T.: -0.008 min  
 Response: 22613198  
 Conc: 6.69 ng/ml



#2 3,5-DICHLOROBENZOIC ACID

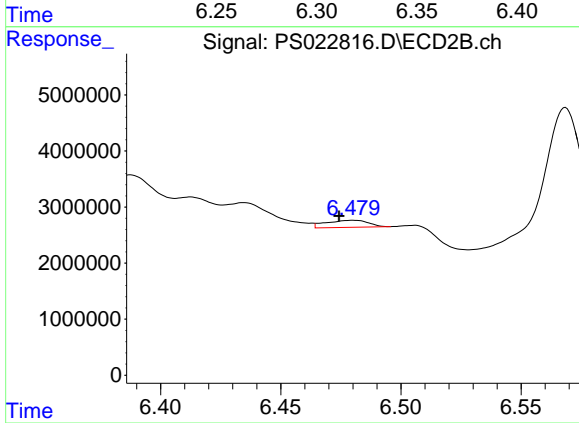
R.T.: 6.035 min  
 Delta R.T.: 0.002 min  
 Response: 5282486  
 Conc: 3.39 ng/ml



#3 4-Nitrophenol

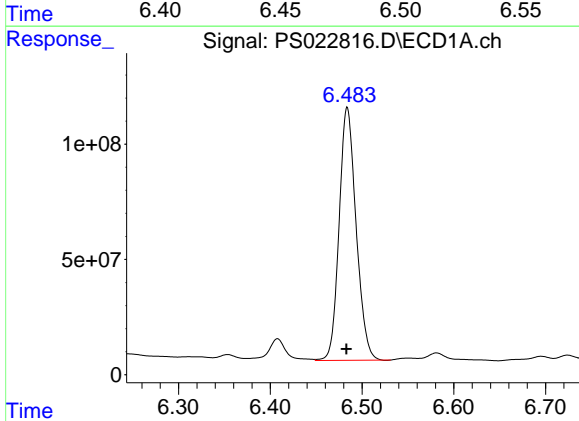
R.T.: 6.311 min  
 Delta R.T.: -0.004 min  
 Response: 42576157  
 Conc: 22.95 ng/ml

Instrument :  
 ECD\_S  
 ClientSampleId :



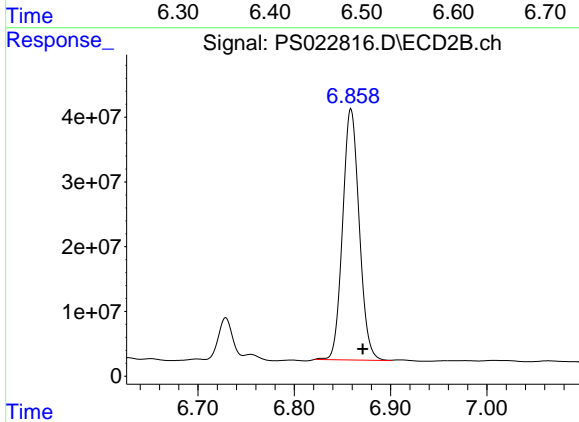
#3 4-Nitrophenol

R.T.: 6.480 min  
 Delta R.T.: 0.006 min  
 Response: 1515313  
 Conc: 2.38 ng/ml



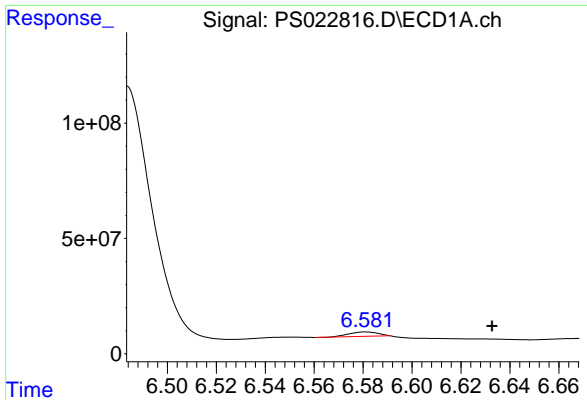
#4 2,4-DCAA

R.T.: 6.484 min  
 Delta R.T.: 0.000 min  
 Response: 1411988024  
 Conc: 567.13 ng/ml



#4 2,4-DCAA

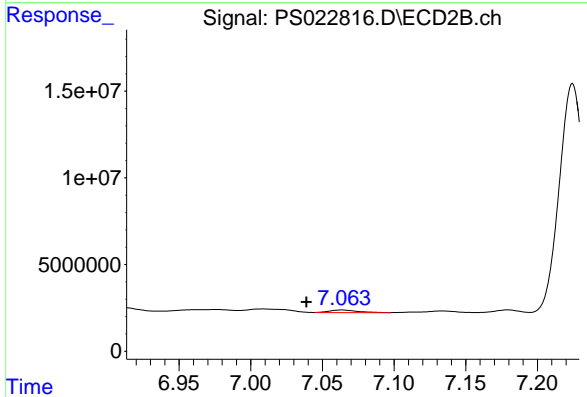
R.T.: 6.859 min  
 Delta R.T.: -0.012 min  
 Response: 462410372  
 Conc: 453.81 ng/ml



#5 DICAMBA

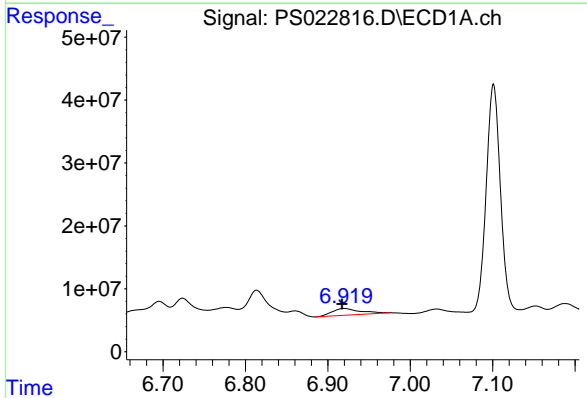
R.T.: 6.581 min  
 Delta R.T.: -0.052 min  
 Response: 16448301  
 Conc: 1.50 ng/ml

Instrument :  
 ECD\_S  
 ClientSampleId :



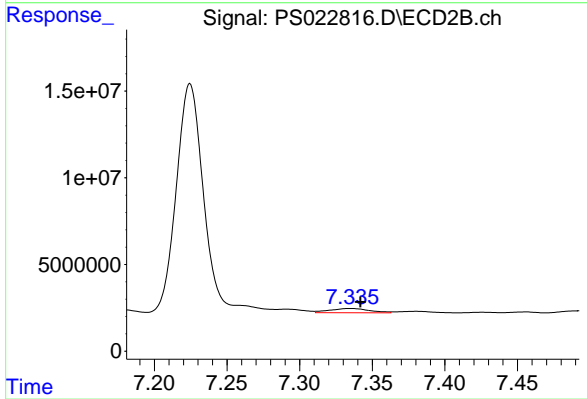
#5 DICAMBA

R.T.: 7.064 min  
 Delta R.T.: 0.025 min  
 Response: 1923974  
 Conc: N.D.



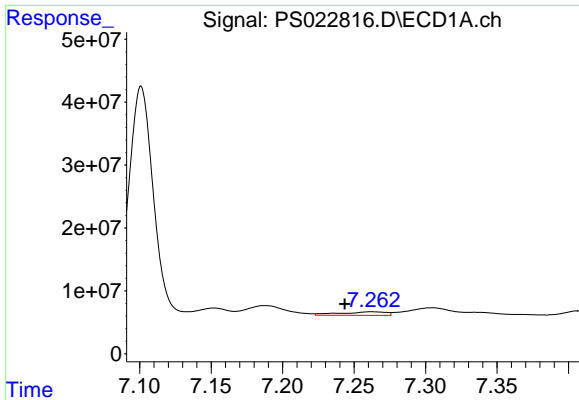
#7 MCPA

R.T.: 6.920 min  
 Delta R.T.: 0.003 min  
 Response: 25519524  
 Conc: 2.15 ug/ml



#7 MCPA

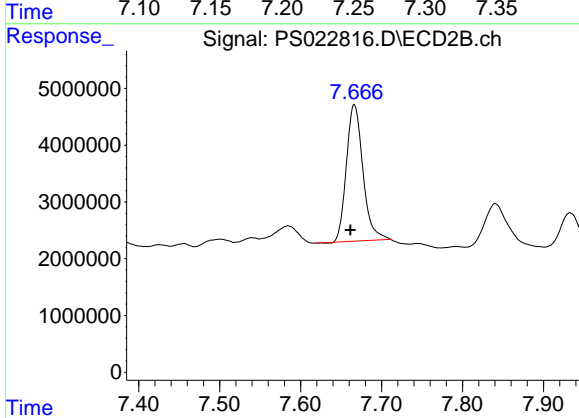
R.T.: 7.335 min  
 Delta R.T.: -0.007 min  
 Response: 4685977  
 Conc: N.D.



#8 DICHLORPROP

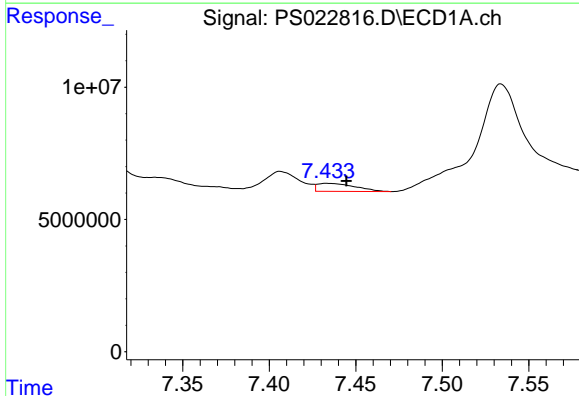
R.T.: 7.262 min  
 Delta R.T.: 0.019 min  
 Response: 12689721  
 Conc: 4.17 ng/ml

Instrument :  
 ECD\_S  
 ClientSampleId :



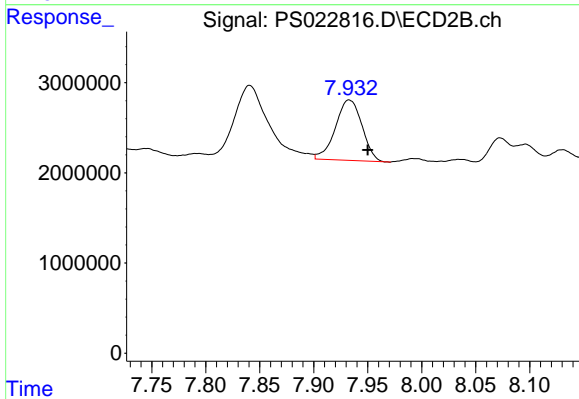
#8 DICHLORPROP

R.T.: 7.666 min  
 Delta R.T.: 0.005 min  
 Response: 33990637  
 Conc: 30.52 ng/ml



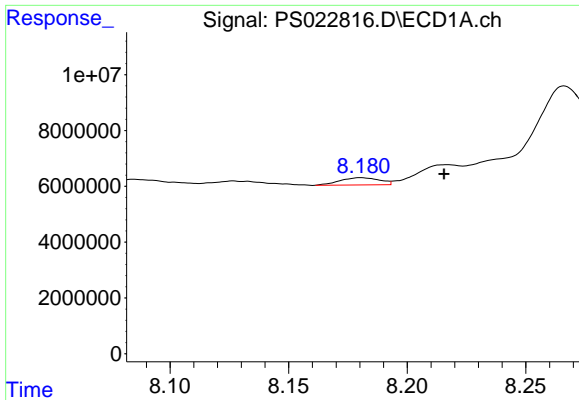
#9 2,4-D

R.T.: 7.434 min  
 Delta R.T.: -0.010 min  
 Response: 4605742  
 Conc: 1.24 ng/ml



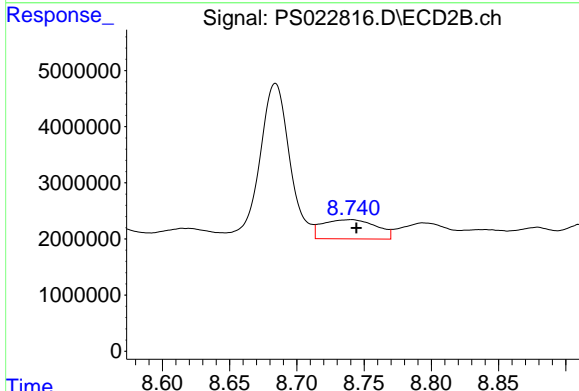
#9 2,4-D

R.T.: 7.933 min  
 Delta R.T.: -0.017 min  
 Response: 11490530  
 Conc: 8.97 ng/ml

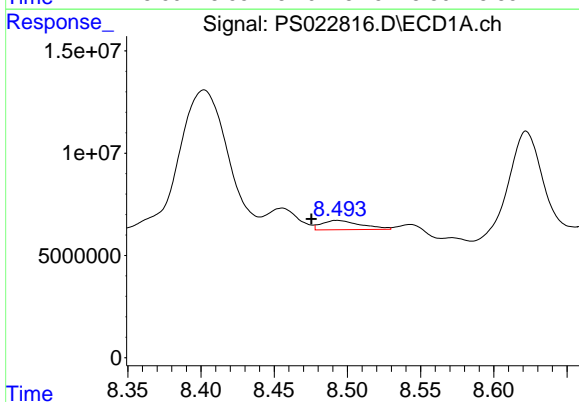


#11 2,4,5-TP (SILVEX)  
 R.T.: 8.181 min  
 Delta R.T.: -0.035 min  
 Response: 3042598  
 Conc: N.D.

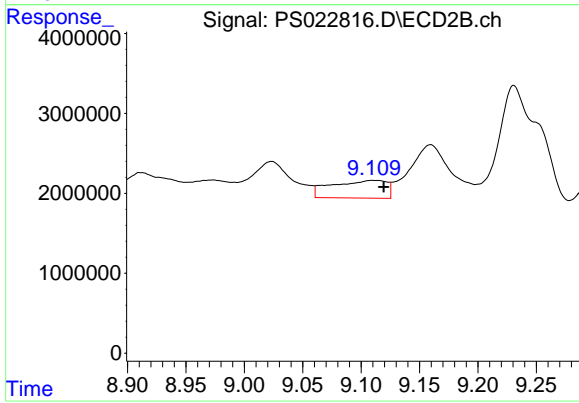
Instrument :  
 ECD\_S  
 ClientSampleId :



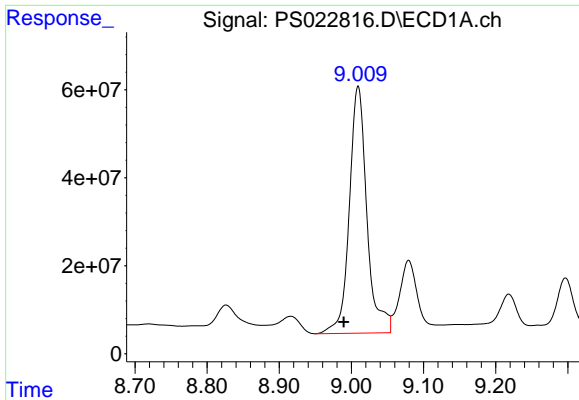
#11 2,4,5-TP (SILVEX)  
 R.T.: 8.741 min  
 Delta R.T.: -0.004 min  
 Response: 9484416  
 Conc: 1.52 ng/ml



#12 2,4,5-T  
 R.T.: 8.493 min  
 Delta R.T.: 0.018 min  
 Response: 8472419  
 Conc: N.D.



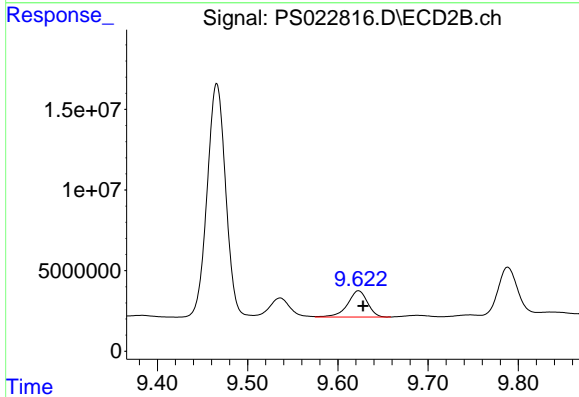
#12 2,4,5-T  
 R.T.: 9.110 min  
 Delta R.T.: -0.010 min  
 Response: 7232023  
 Conc: 1.22 ng/ml



#13 2,4-DB

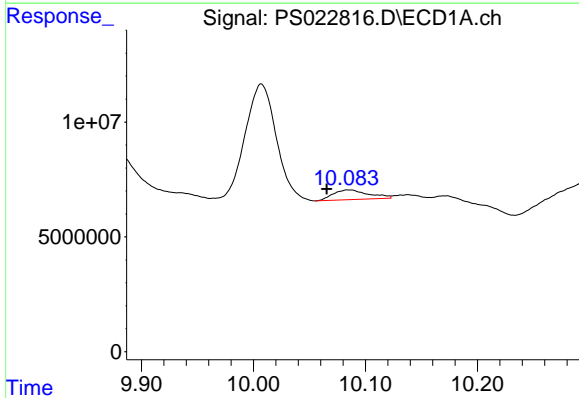
R.T.: 9.009 min  
 Delta R.T.: 0.020 min  
 Response: 950658653  
 Conc: 222.47 ng/ml

Instrument :  
 ECD\_S  
 ClientSampleId :



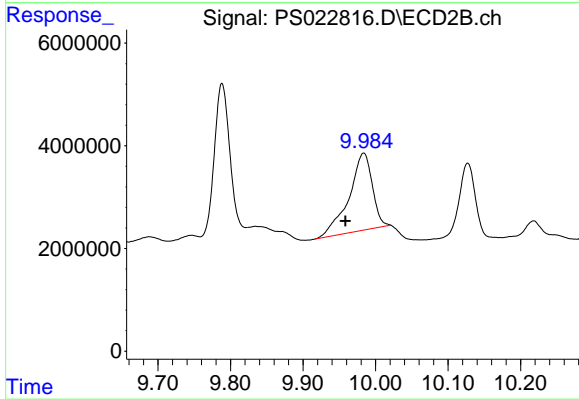
#13 2,4-DB

R.T.: 9.623 min  
 Delta R.T.: -0.005 min  
 Response: 24915718  
 Conc: 33.25 ng/ml



#14 DINOSEB

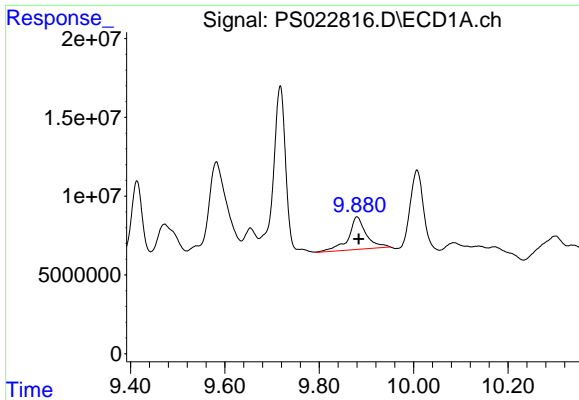
R.T.: 10.086 min  
 Delta R.T.: 0.020 min  
 Response: 9263311  
 Conc: N.D.



#14 DINOSEB

R.T.: 9.984 min  
 Delta R.T.: 0.025 min  
 Response: 33890072  
 Conc: 7.68 ng/ml

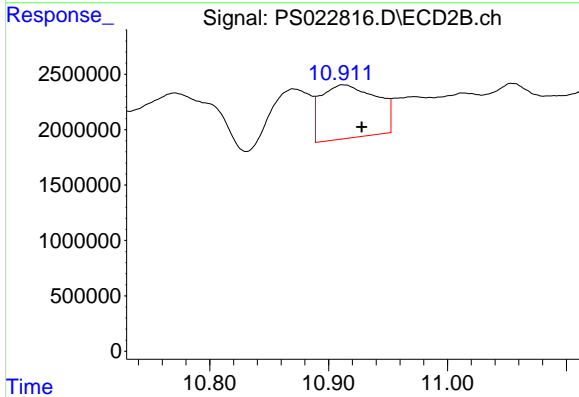




#15 Picloram

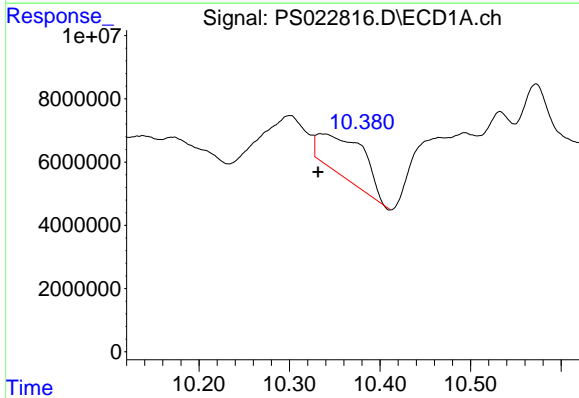
R.T.: 9.880 min  
 Delta R.T.: -0.003 min  
 Response: 54690230  
 Conc: 1.84 ng/ml

Instrument :  
 ECD\_S  
 ClientSampleId :



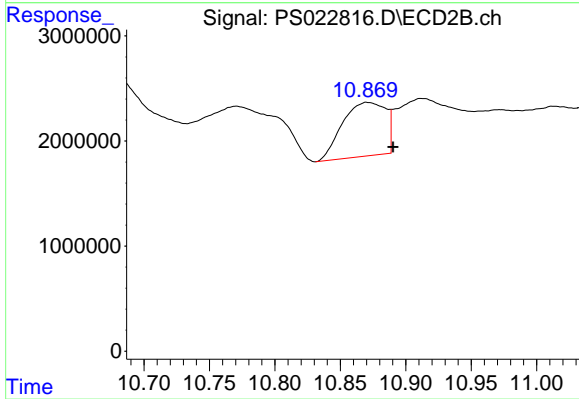
#15 Picloram

R.T.: 10.913 min  
 Delta R.T.: -0.015 min  
 Response: 15719811  
 Conc: 1.93 ng/ml



#16 DCPA

R.T.: 10.336 min  
 Delta R.T.: 0.004 min  
 Response: 44927767  
 Conc: 2.01 ng/ml



#16 DCPA

R.T.: 10.870 min  
 Delta R.T.: -0.020 min  
 Response: 11773425  
 Conc: 1.70 ng/ml