

Data Path : Z:\pestpcbsrv\HPCHEM1\ECD_S\Data\PS042123\
 Data File : PS022817.D
 Signal(s) : Signal #1: ECD1A.ch Signal #2: ECD2B.ch
 Acq On : 21 Apr 2023 21:24
 Operator : AR\AJ
 Sample : I.BLK
 Misc :
 ALS Vial : 2 Sample Multiplier: 1

Instrument :
 ECD_S
 ClientSampleId :

Integration File signal 1: autoint1.e
 Integration File signal 2: autoint2.e
 Quant Time: Apr 22 05:42:33 2023
 Quant Method : Z:\pestpcbsrv\HPCHEM1\ECD_S\Method\PS041223.M
 Quant Title : 8080.M
 QLast Update : Wed Apr 12 14:05:56 2023
 Response via : Initial Calibration
 Integrator: ChemStation

Volume Inj. : 2 µl
 Signal #1 Phase : Rtx-CLPesticides Signal #2 Phase: Rtx-CLPesticides2
 Signal #1 Info : 30M x 0.32mm x0.5 Signal #2 Info : 30M x 0.32mm x 0.25µm

Compound	RT#1	RT#2	Resp#1	Resp#2	ng/ml	ng/ml

System Monitoring Compounds						
4) S 2,4-DCAA	6.483	6.859	1369.3E6	550.3E6	549.995	540.040
Target Compounds						
1) T Dalapon	2.563	0.000	384024	0	<MDL	N.D. #
2) T 3,5-DICHL...	5.835	0.000	627327	0	<MDL	N.D. #
3) T 4-Nitroph...	6.319	0.000	6481169	0	3.493	N.D. #
5) T DICAMBA	6.630	0.000	632644	0	<MDL	N.D. #
6) T MCPP	6.816	0.000	9059542	0	1.077	N.D. #
7) T MCPA	6.859f	0.000	7418391	0	<MDL	N.D. #
8) T DICHLORPROP	7.242	7.667	1114407	4101362	<MDL	3.683 #
9) T 2,4-D	7.444	0.000	1319183	0	<MDL	N.D. #
10) T Pentachlo...	7.679	8.367	2661313	1997301	<MDL	<MDL #
11) T 2,4,5-TP ...	8.215	8.686f	5663526	1008279	<MDL	<MDL #
12) T 2,4,5-T	8.476	9.105	6812105	1478521	<MDL	<MDL #
13) T 2,4-DB	9.005	9.691f	9075115	944249	2.124	1.260 #
14) T DINOSEB	10.065	0.000	961944	0	<MDL	N.D. #
15) T Picloram	9.888	10.912	24836235	4007030	<MDL	<MDL #
16) T DCPA	10.333	10.912	6542596	4007030	<MDL	<MDL #

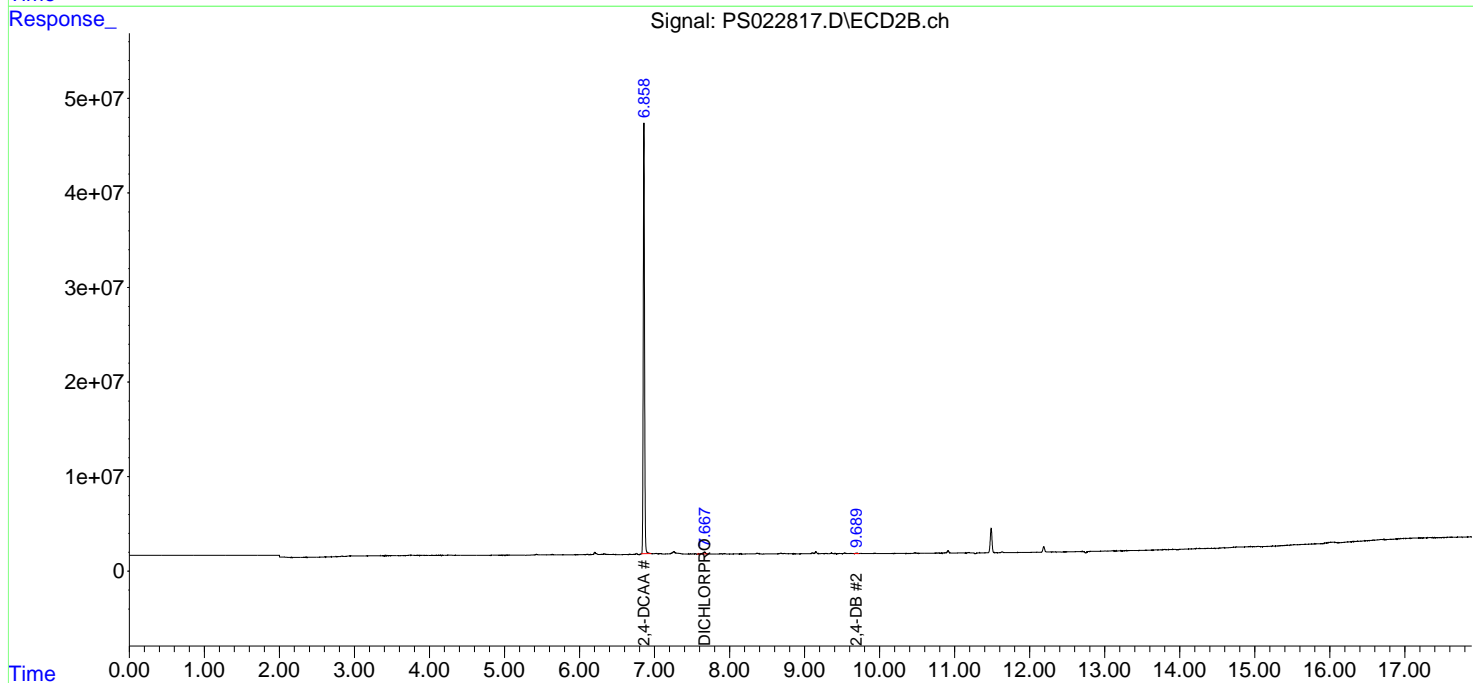
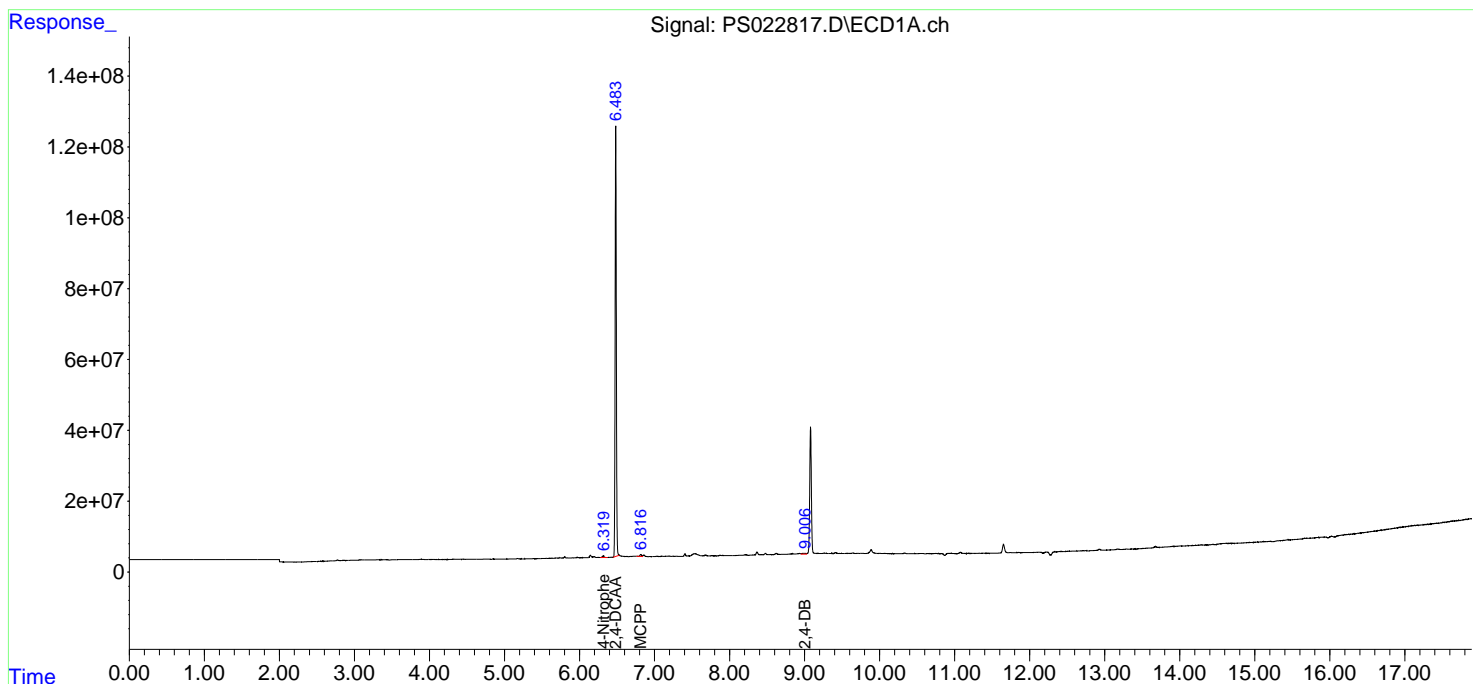
(f)=RT Delta > 1/2 Window (#)=Amounts differ by > 25% (m)=manual int.

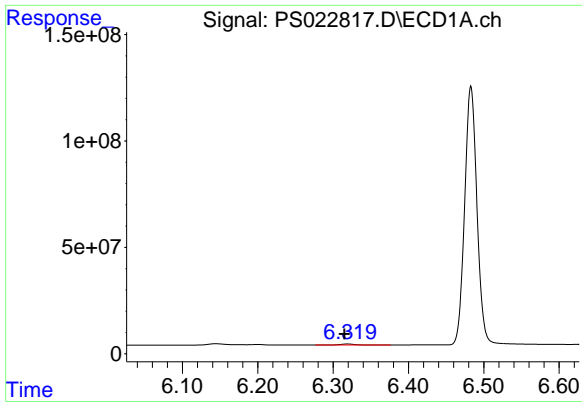
Data Path : Z:\pestpcbsrv\HPCHEM1\ECD_S\Data\PS042123\
 Data File : PS022817.D
 Signal(s) : Signal #1: ECD1A.ch Signal #2: ECD2B.ch
 Acq On : 21 Apr 2023 21:24
 Operator : AR\AJ
 Sample : I.BLK
 Misc :
 ALS Vial : 2 Sample Multiplier: 1

Instrument :
 ECD_S
 ClientSampleId :

Integration File signal 1: autoint1.e
 Integration File signal 2: autoint2.e
 Quant Time: Apr 22 05:42:33 2023
 Quant Method : Z:\pestpcbsrv\HPCHEM1\ECD_S\Method\PS041223.M
 Quant Title : 8080.M
 QLast Update : Wed Apr 12 14:05:56 2023
 Response via : Initial Calibration
 Integrator: ChemStation

Volume Inj. : 2 µl
 Signal #1 Phase : Rtx-CLPesticides Signal #2 Phase: Rtx-CLPesticides2
 Signal #1 Info : 30M x 0.32mm x 0.5 Signal #2 Info : 30M x 0.32mm x 0.25µm

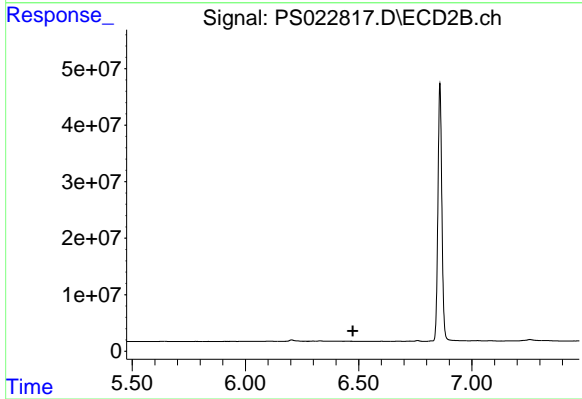




#3 4-Nitrophenol

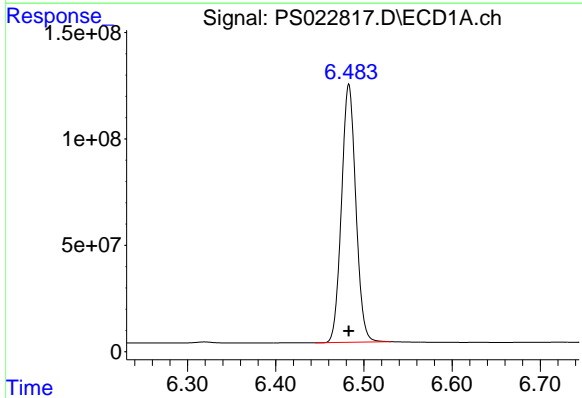
R.T.: 6.319 min
 Delta R.T.: 0.004 min
 Response: 6481169
 Conc: 3.49 ng/ml

Instrument :
 ECD_S
 ClientSampleId :



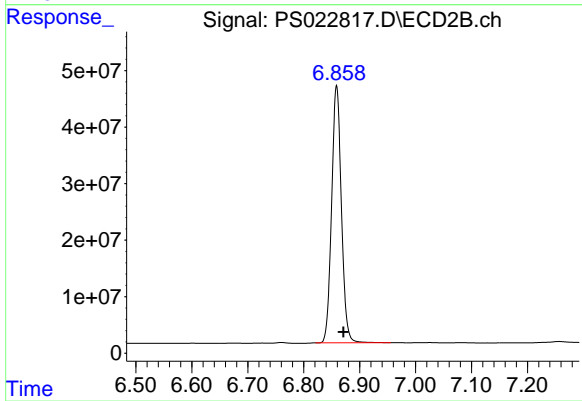
#3 4-Nitrophenol

R.T.: 0.000 min
 Exp R.T. : 6.474 min
 Response: 0
 Conc: N.D.



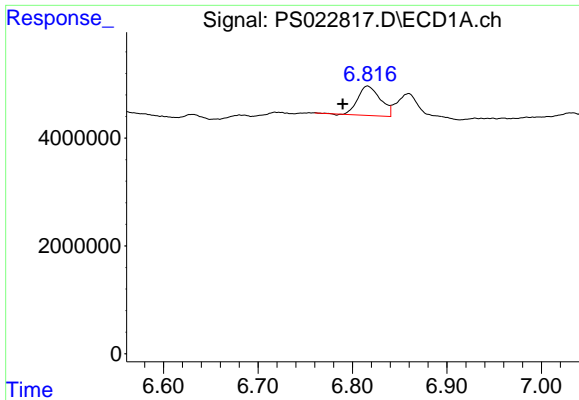
#4 2,4-DCAA

R.T.: 6.483 min
 Delta R.T.: 0.000 min
 Response: 1369325845
 Conc: 550.00 ng/ml



#4 2,4-DCAA

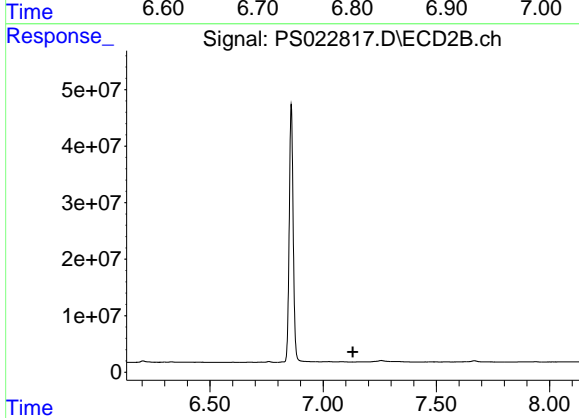
R.T.: 6.859 min
 Delta R.T.: -0.012 min
 Response: 550270883
 Conc: 540.04 ng/ml



#6 MCPP

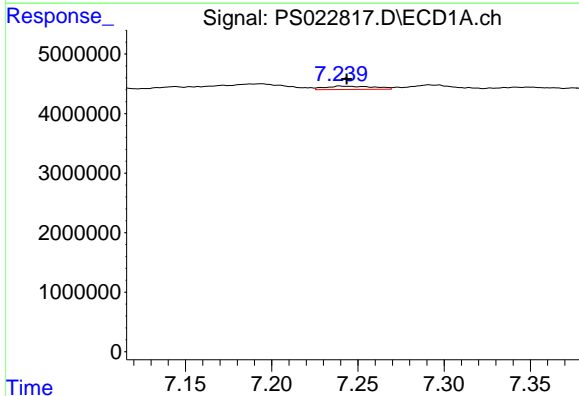
R.T.: 6.816 min
 Delta R.T.: 0.027 min
 Response: 9059542
 Conc: 1.08 ug/ml

Instrument :
 ECD_S
 ClientSampleId :



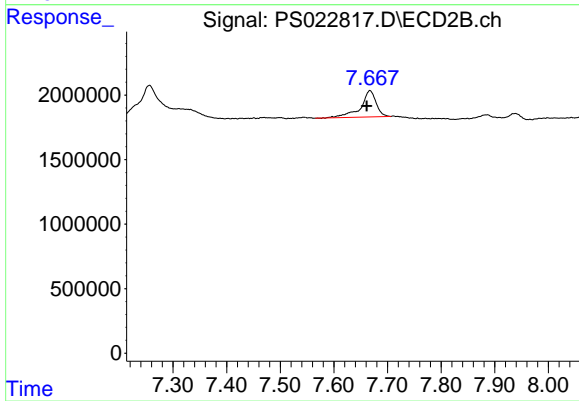
#6 MCPP

R.T.: 0.000 min
 Exp R.T. : 7.132 min
 Response: 0
 Conc: N.D.



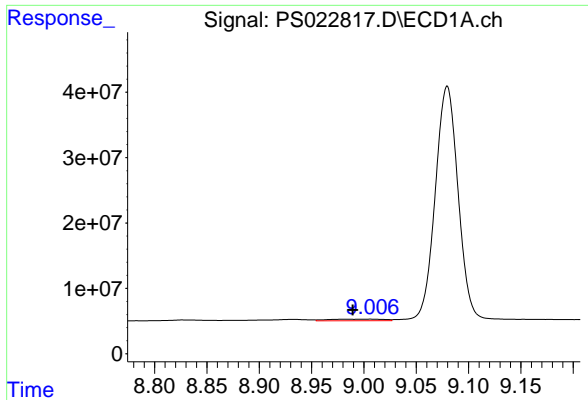
#8 DICHLORPROP

R.T.: 7.242 min
 Delta R.T.: -0.002 min
 Response: 1114407
 Conc: N.D.



#8 DICHLORPROP

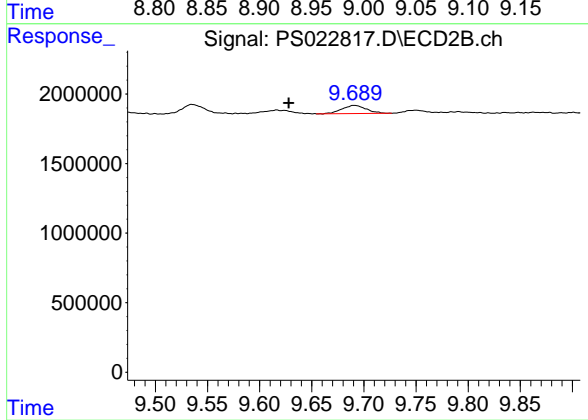
R.T.: 7.667 min
 Delta R.T.: 0.006 min
 Response: 4101362
 Conc: 3.68 ng/ml



#13 2,4-DB

R.T.: 9.005 min
Delta R.T.: 0.016 min
Response: 9075115
Conc: 2.12 ng/ml

Instrument :
ECD_S
ClientSampleId :



#13 2,4-DB

R.T.: 9.691 min
Delta R.T.: 0.063 min
Response: 944249
Conc: 1.26 ng/ml