

Data Path : Z:\pestpcbsrv\HPCHEM1\ECD_S\Data\PS042123\
 Data File : PS022824.D
 Signal(s) : Signal #1: ECD1A.ch Signal #2: ECD2B.ch
 Acq On : 22 Apr 2023 00:13
 Operator : AR\AJ
 Sample : 02395-01
 Misc :
 ALS Vial : 27 Sample Multiplier: 1

Instrument :
 ECD_S
 ClientSampleId :

Integration File signal 1: autoint1.e
 Integration File signal 2: autoint2.e
 Quant Time: Apr 22 05:44:44 2023
 Quant Method : Z:\pestpcbsrv\HPCHEM1\ECD_S\Method\PS041223.M
 Quant Title : 8080.M
 QLast Update : Wed Apr 12 14:05:56 2023
 Response via : Initial Calibration
 Integrator: ChemStation

Volume Inj. : 2 µl
 Signal #1 Phase : Rtx-CLPesticides Signal #2 Phase: Rtx-CLPesticides2
 Signal #1 Info : 30M x 0.32mm x0.5 Signal #2 Info : 30M x 0.32mm x 0.25µm

Compound	RT#1	RT#2	Resp#1	Resp#2	ng/ml	ng/ml
System Monitoring Compounds						
4) S 2,4-DCAA	6.484	6.858	1412.8E6	446.3E6	567.451	437.983
Target Compounds						
1) T Dalapon	2.508	2.537	210.4E6	500.4E6	71.255	316.125 #
2) T 3,5-DICHL...	5.827	6.032	6960028	1068720	2.060	<MDL #
3) T 4-Nitroph...	6.324	6.481	44642745	11795695	24.059	18.555
5) T DICAMBA	6.637	7.061	-3488261	2627883	N.D.	<MDL
6) T MCPP	6.775	7.135	6799345	1771578	<MDL	<MDL #
7) T MCPA	6.920	7.334	14277569	7035934	1.203	1.455
8) T DICHLORPROP	7.232	7.665	5112697	32255452	1.681	28.965 #
9) T 2,4-D	7.431	7.934	2441468	10848233	<MDL	8.470 #
10) T Pentachlo...	7.676	8.356	6606009	3880280	<MDL	<MDL #
11) T 2,4,5-TP ...	8.215	8.715	23321948	11205073	1.272	1.797 #
12) T 2,4,5-T	8.494	9.159	12550769	12193376	<MDL	2.061 #
13) T 2,4-DB	9.009	9.613	76049183	3511643	17.797	4.687 #
14) T DINOSEB	10.091	9.984	54691520	29096560	3.858	6.590 #
15) T Picloram	9.882	10.912	52606088	13699695	1.766	1.684
16) T DCPA	10.337	10.870	35785196	7933435	1.601	1.142 #

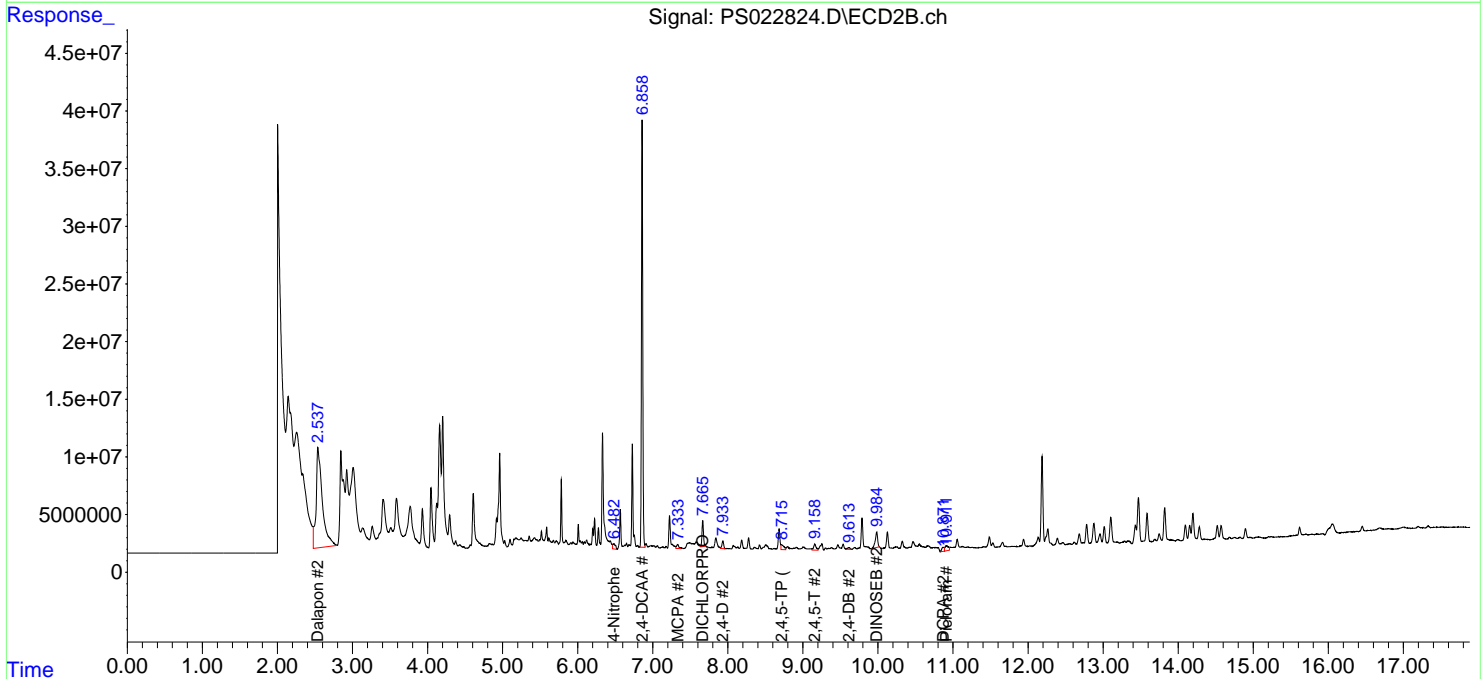
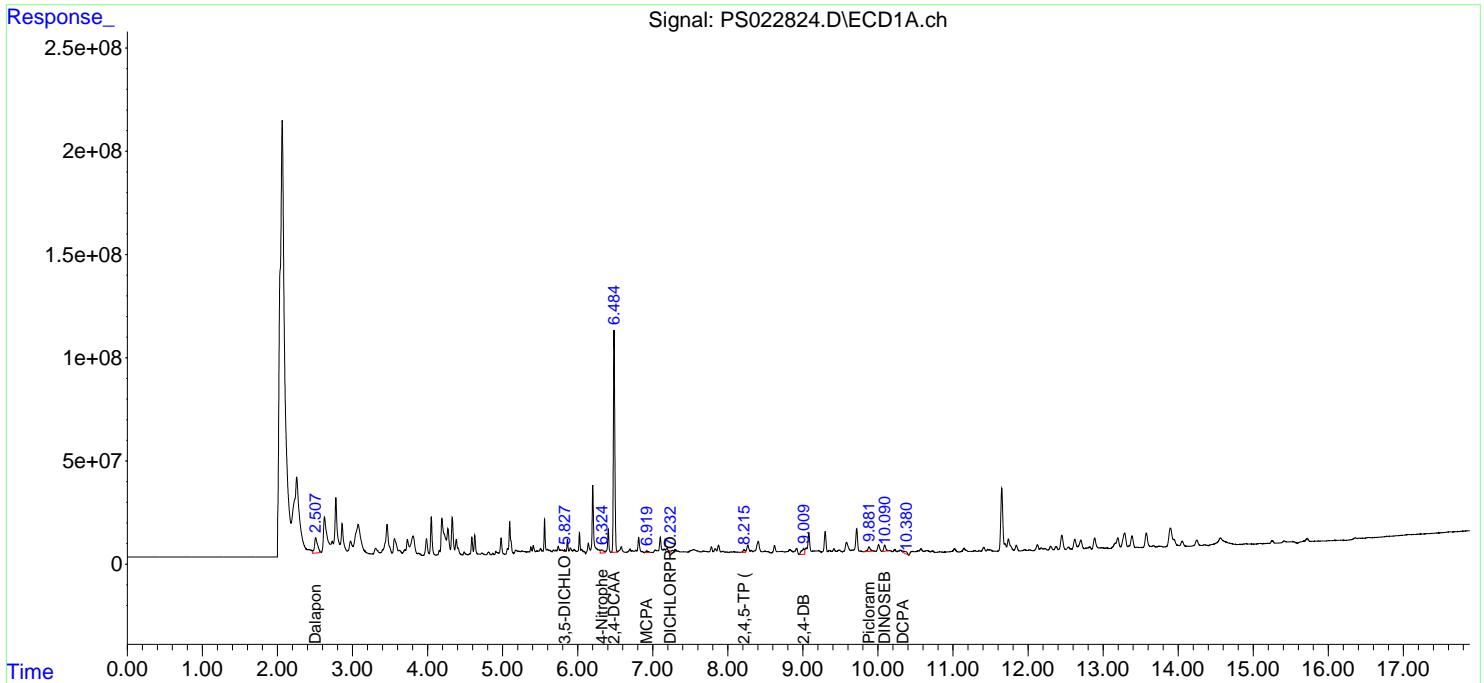
(f)=RT Delta > 1/2 Window (#)=Amounts differ by > 25% (m)=manual int.

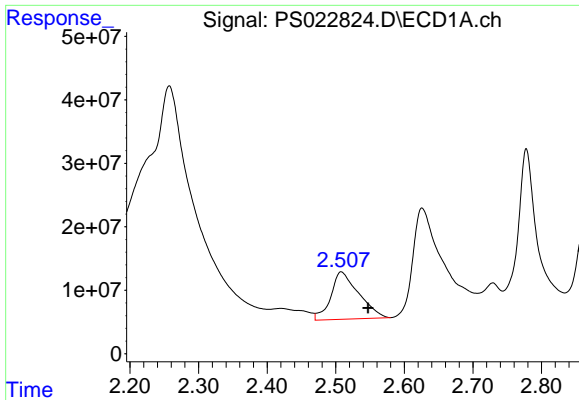
Data Path : Z:\pestpcbsrv\HPCHEM1\ECD_S\Data\PS042123\
 Data File : PS022824.D
 Signal(s) : Signal #1: ECD1A.ch Signal #2: ECD2B.ch
 Acq On : 22 Apr 2023 00:13
 Operator : AR\AJ
 Sample : 02395-01
 Misc :
 ALS Vial : 27 Sample Multiplier: 1

Instrument :
 ECD_S
 ClientSampleId :

Integration File signal 1: autoint1.e
 Integration File signal 2: autoint2.e
 Quant Time: Apr 22 05:44:44 2023
 Quant Method : Z:\pestpcbsrv\HPCHEM1\ECD_S\Method\PS041223.M
 Quant Title : 8080.M
 QLast Update : Wed Apr 12 14:05:56 2023
 Response via : Initial Calibration
 Integrator: ChemStation

Volume Inj. : 2 µl
 Signal #1 Phase : Rtx-CLPesticides Signal #2 Phase: Rtx-CLPesticides2
 Signal #1 Info : 30M x 0.32mm x0.5 Signal #2 Info : 30M x 0.32mm x 0.25µm

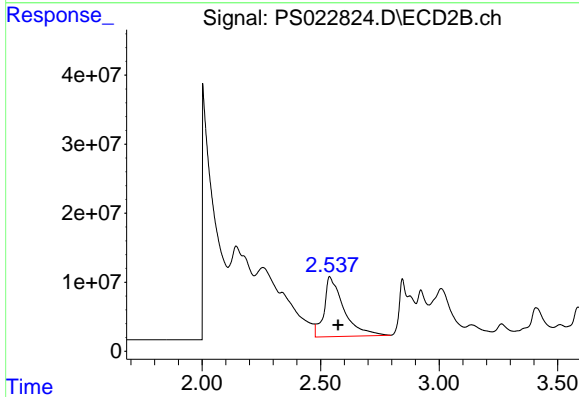




#1 Dalapon

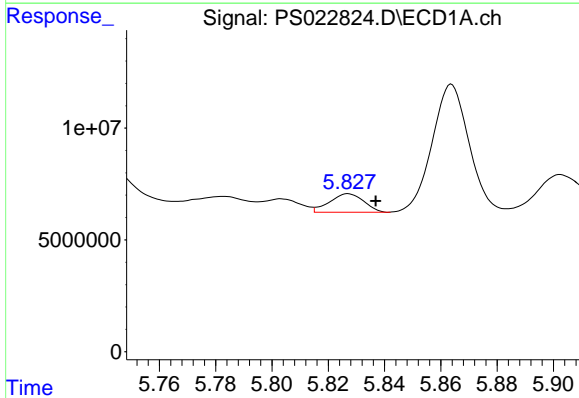
R.T.: 2.508 min
 Delta R.T.: -0.039 min
 Response: 210442143
 Conc: 71.26 ng/ml

Instrument :
 ECD_S
 ClientSampleId :



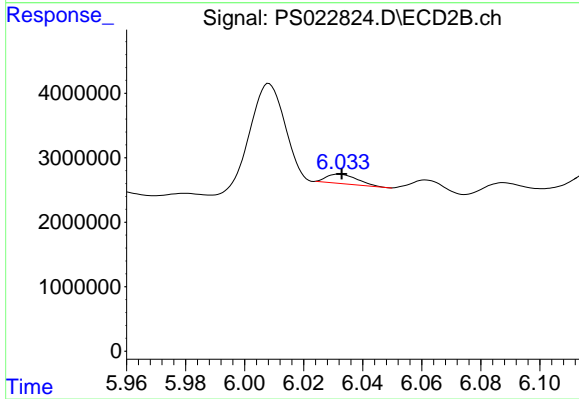
#1 Dalapon

R.T.: 2.537 min
 Delta R.T.: -0.037 min
 Response: 500438513
 Conc: 316.12 ng/ml



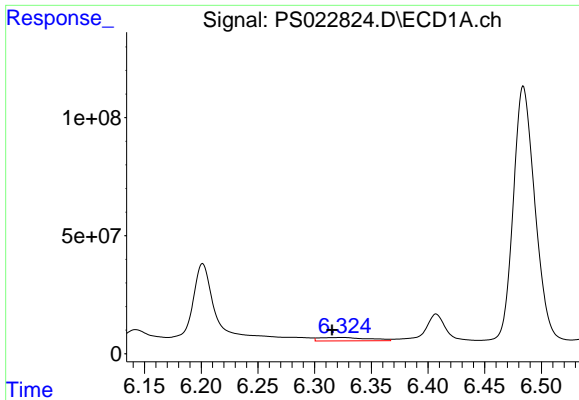
#2 3,5-DICHLOROBENZOIC ACID

R.T.: 5.827 min
 Delta R.T.: -0.010 min
 Response: 6960028
 Conc: 2.06 ng/ml



#2 3,5-DICHLOROBENZOIC ACID

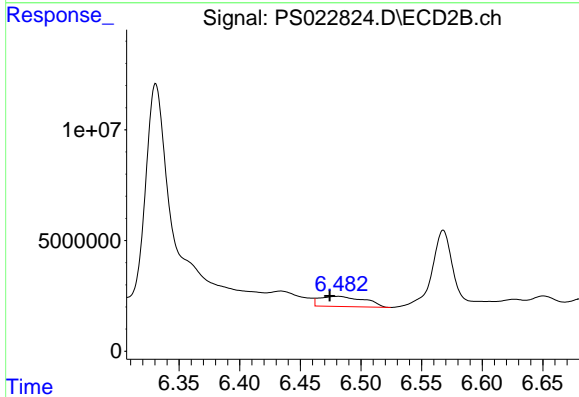
R.T.: 6.032 min
 Delta R.T.: 0.000 min
 Response: 1068720
 Conc: N.D.



#3 4-Nitrophenol

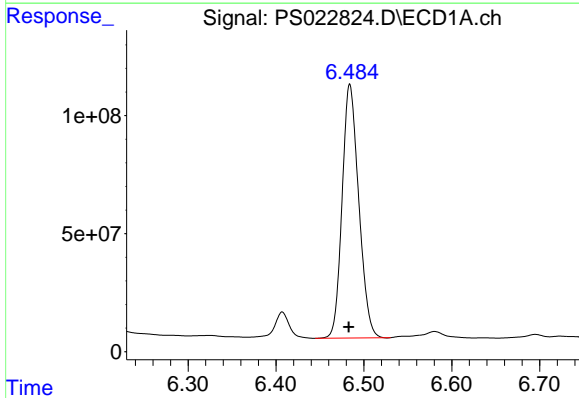
R.T.: 6.324 min
 Delta R.T.: 0.009 min
 Response: 44642745
 Conc: 24.06 ng/ml

Instrument :
 ECD_S
 ClientSampleId :



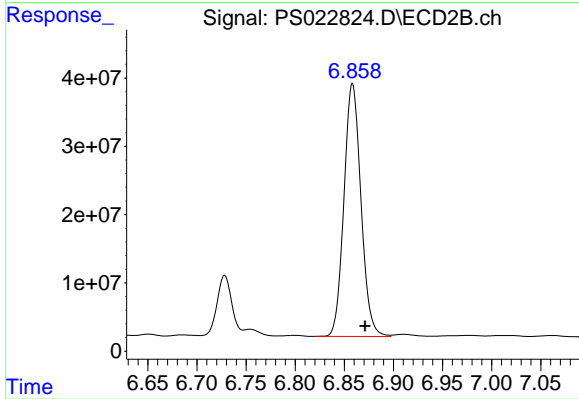
#3 4-Nitrophenol

R.T.: 6.481 min
 Delta R.T.: 0.007 min
 Response: 11795695
 Conc: 18.56 ng/ml



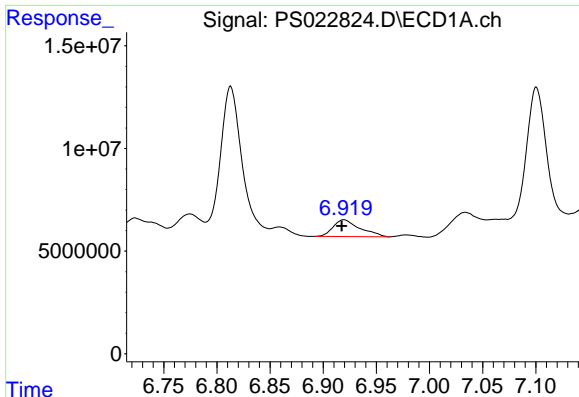
#4 2,4-DCAA

R.T.: 6.484 min
 Delta R.T.: 0.001 min
 Response: 1412783903
 Conc: 567.45 ng/ml



#4 2,4-DCAA

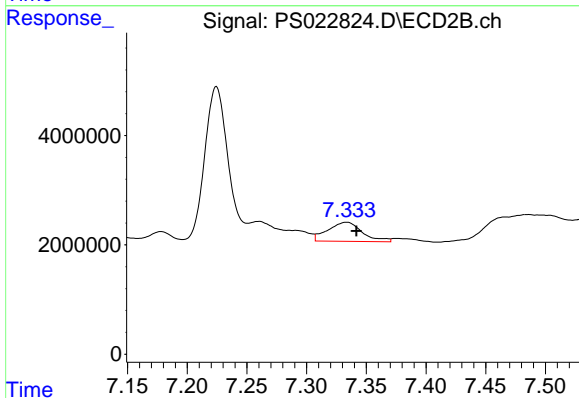
R.T.: 6.858 min
 Delta R.T.: -0.013 min
 Response: 446280626
 Conc: 437.98 ng/ml



#7 MCPA

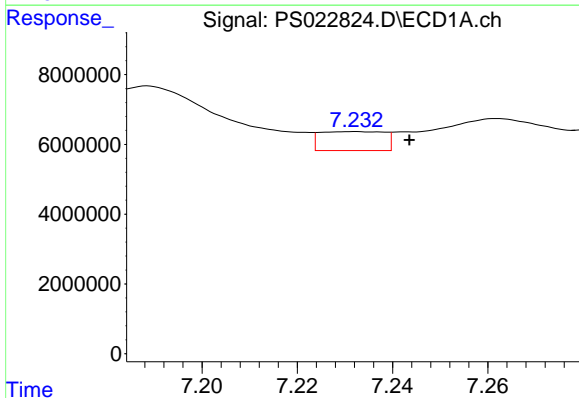
R.T.: 6.920 min
 Delta R.T.: 0.002 min
 Response: 14277569
 Conc: 1.20 ug/ml

Instrument :
 ECD_S
 ClientSampleId :



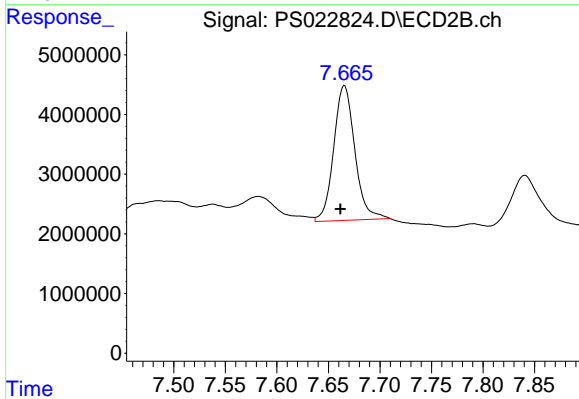
#7 MCPA

R.T.: 7.334 min
 Delta R.T.: -0.008 min
 Response: 7035934
 Conc: 1.46 ug/ml



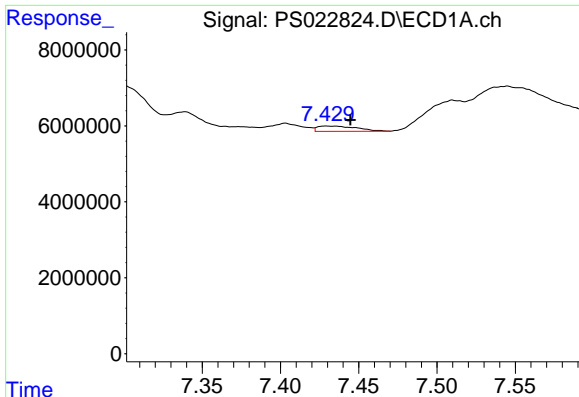
#8 DICHLORPROP

R.T.: 7.232 min
 Delta R.T.: -0.011 min
 Response: 5112697
 Conc: 1.68 ng/ml



#8 DICHLORPROP

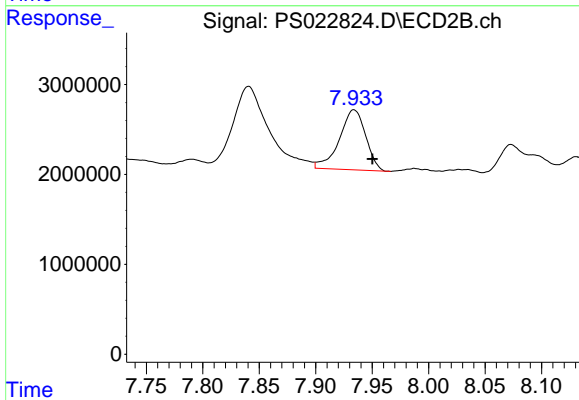
R.T.: 7.665 min
 Delta R.T.: 0.004 min
 Response: 32255452
 Conc: 28.97 ng/ml



#9 2,4-D

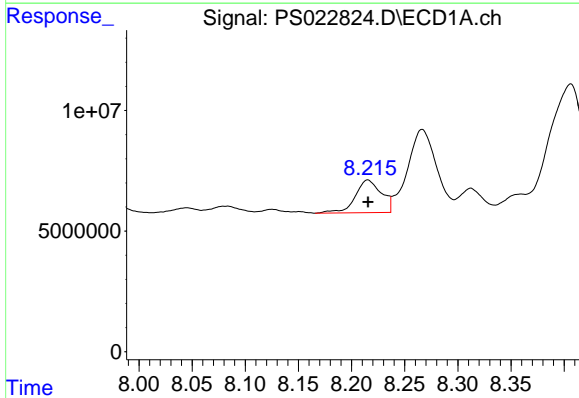
R.T.: 7.431 min
 Delta R.T.: -0.014 min
 Response: 2441468
 Conc: N.D.

Instrument :
 ECD_S
 ClientSampleId :



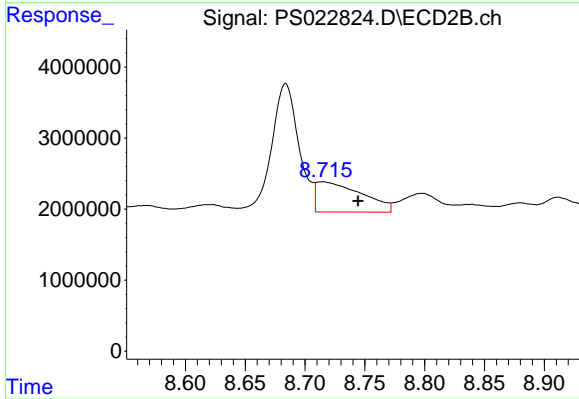
#9 2,4-D

R.T.: 7.934 min
 Delta R.T.: -0.016 min
 Response: 10848233
 Conc: 8.47 ng/ml



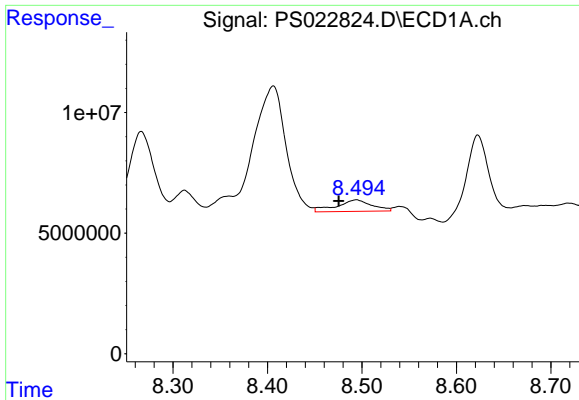
#11 2,4,5-TP (SILVEX)

R.T.: 8.215 min
 Delta R.T.: 0.000 min
 Response: 23321948
 Conc: 1.27 ng/ml



#11 2,4,5-TP (SILVEX)

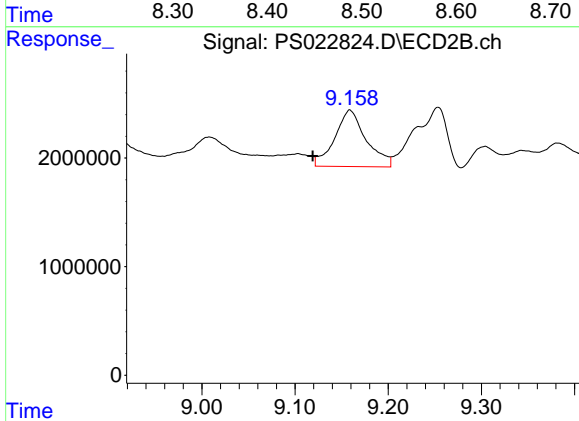
R.T.: 8.715 min
 Delta R.T.: -0.030 min
 Response: 11205073
 Conc: 1.80 ng/ml



#12 2,4,5-T

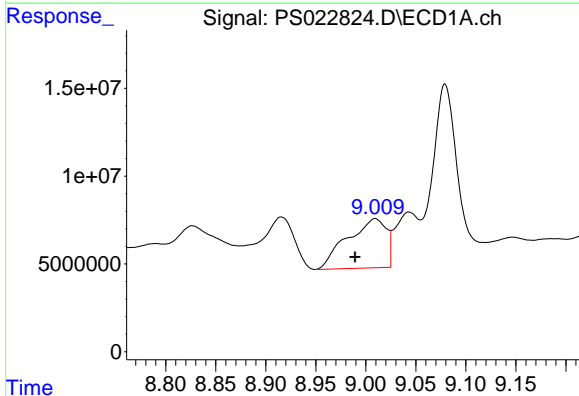
R.T.: 8.494 min
 Delta R.T.: 0.019 min
 Response: 12550769
 Conc: N.D.

Instrument :
 ECD_S
 ClientSampleId :



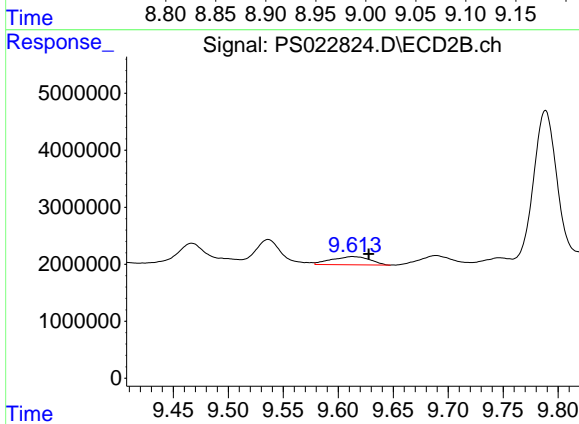
#12 2,4,5-T

R.T.: 9.159 min
 Delta R.T.: 0.040 min
 Response: 12193376
 Conc: 2.06 ng/ml



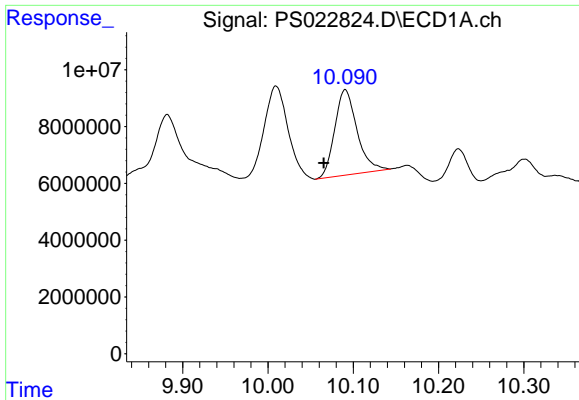
#13 2,4-DB

R.T.: 9.009 min
 Delta R.T.: 0.020 min
 Response: 76049183
 Conc: 17.80 ng/ml



#13 2,4-DB

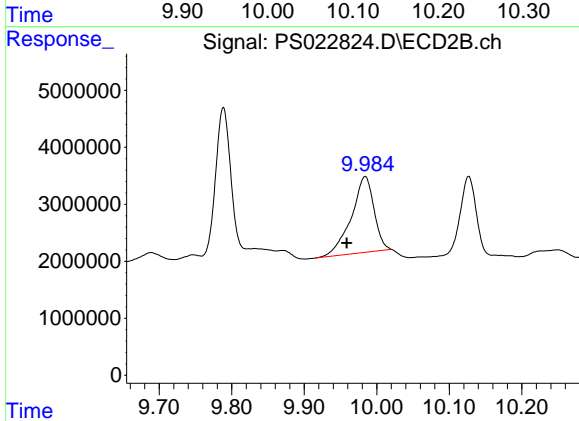
R.T.: 9.613 min
 Delta R.T.: -0.015 min
 Response: 3511643
 Conc: 4.69 ng/ml



#14 DINOSEB

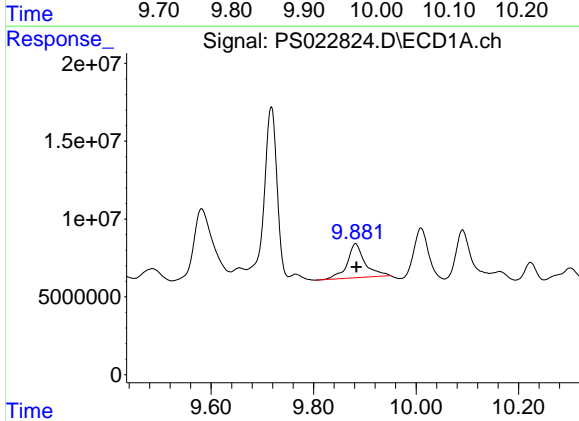
R.T.: 10.091 min
 Delta R.T.: 0.025 min
 Response: 54691520
 Conc: 3.86 ng/ml

Instrument :
 ECD_S
 ClientSampleId :



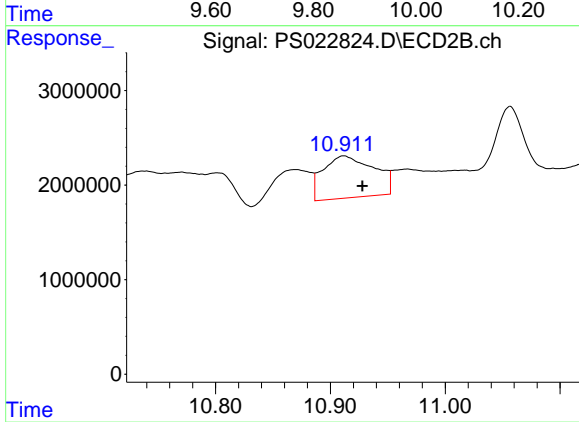
#14 DINOSEB

R.T.: 9.984 min
 Delta R.T.: 0.026 min
 Response: 29096560
 Conc: 6.59 ng/ml



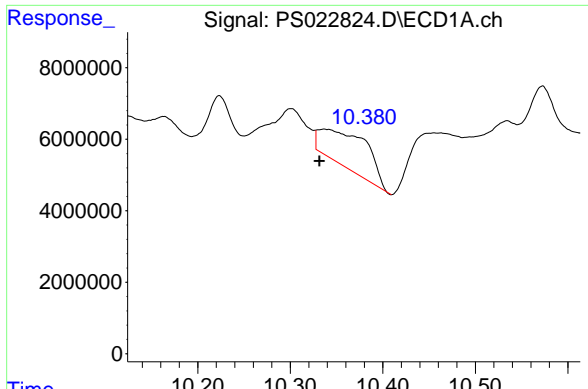
#15 Picloram

R.T.: 9.882 min
 Delta R.T.: -0.002 min
 Response: 52606088
 Conc: 1.77 ng/ml



#15 Picloram

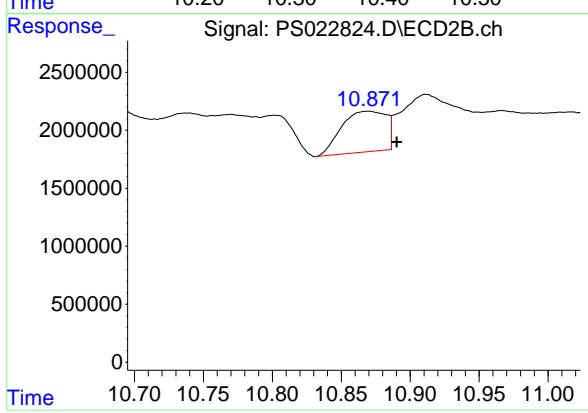
R.T.: 10.912 min
 Delta R.T.: -0.016 min
 Response: 13699695
 Conc: 1.68 ng/ml



#16 DCPA

R.T.: 10.337 min
Delta R.T.: 0.006 min
Response: 35785196
Conc: 1.60 ng/ml

Instrument :
ECD_S
ClientSampleId :



#16 DCPA

R.T.: 10.870 min
Delta R.T.: -0.021 min
Response: 7933435
Conc: 1.14 ng/ml