

Data Path : Z:\pestpcbsrv\HPCHEM1\ECD_S\Data\PS042125\
 Data File : PS029898CC-1.D
 Signal(s) : Signal #1: ECD1A.ch Signal #2: ECD2B.ch
 Acq On : 22 Apr 2025 02:54
 Operator : AR\AJ
 Sample : HSTDCCC750
 Misc :
 ALS Vial : 3 Sample Multiplier: 1

Instrument :
 ECD_S
 ClientSampleId :

Integration File signal 1: autoint1.e
 Integration File signal 2: autoint2.e
 Quant Time: Apr 22 03:52:14 2025
 Quant Method : Z:\pestpcbsrv\HPCHEM1\ECD_S\Method\PS040225.M
 Quant Title : 8080.M
 QLast Update : Wed Apr 02 23:52:55 2025
 Response via : Initial Calibration
 Integrator: ChemStation

Volume Inj. : 1 µl
 Signal #1 Phase : ZB-MR2 Signal #2 Phase: ZB-MR2
 Signal #1 Info : 30M x 0.32mm x0.5 Signal #2 Info : 30M x 0.32mm x 0.25µm

	Compound	RT#1	RT#2	Resp#1	Resp#2	ng/ml	ng/ml

System Monitoring Compounds							
4) S	2,4-DCAA	6.945	7.472	1551.0E6	504.2E6	760.717	739.801
Target Compounds							
1) T	Dalapon	2.454	2.530	2457.1E6	1052.0E6	724.310	662.635
2) T	3,5-DICHL...	6.149	6.468	2312.9E6	646.7E6	768.991	669.719
3) T	4-Nitroph...	6.736	7.006	1088.9E6	481.0E6	775.139	678.458
5) T	DICAMBA	7.122	7.658	6407.9E6	2690.3E6	770.006	728.404
6) T	MCPD	7.301	7.765	407.6E6	113.1E6	75.199	66.961
7) T	MCPA	7.443	7.995	264.8E6	153.9E6	36.422	67.620 #
8) T	DICHLORPROP	7.803	8.352	1574.2E6	674.1E6	715.742	697.761
9) T	2,4-D	8.023	8.665	1776.3E6	746.7E6	737.165	692.379
10) T	Pentachlo...	8.301	9.166	22787.0E6	14005.8E6	749.448	781.238
11) T	2,4,5-TP ...	8.867	9.544	8936.2E6	5562.8E6	769.340	771.224
12) T	2,4,5-T	9.149	9.948	9102.3E6	5239.8E6	791.198	781.724
13) T	2,4-DB	9.707	10.505	1494.6E6	536.2E6	822.695	722.715
14) T	DINOSEB	10.872	10.880	6386.0E6	3795.1E6	756.453	742.278
15) T	Picloram	10.690	11.916	11569.8E6	15414.9E6	746.418	1303.646 #
16) T	DCPA	11.172	11.916	11126.9E6	15414.9E6	796.708	1741.662 #

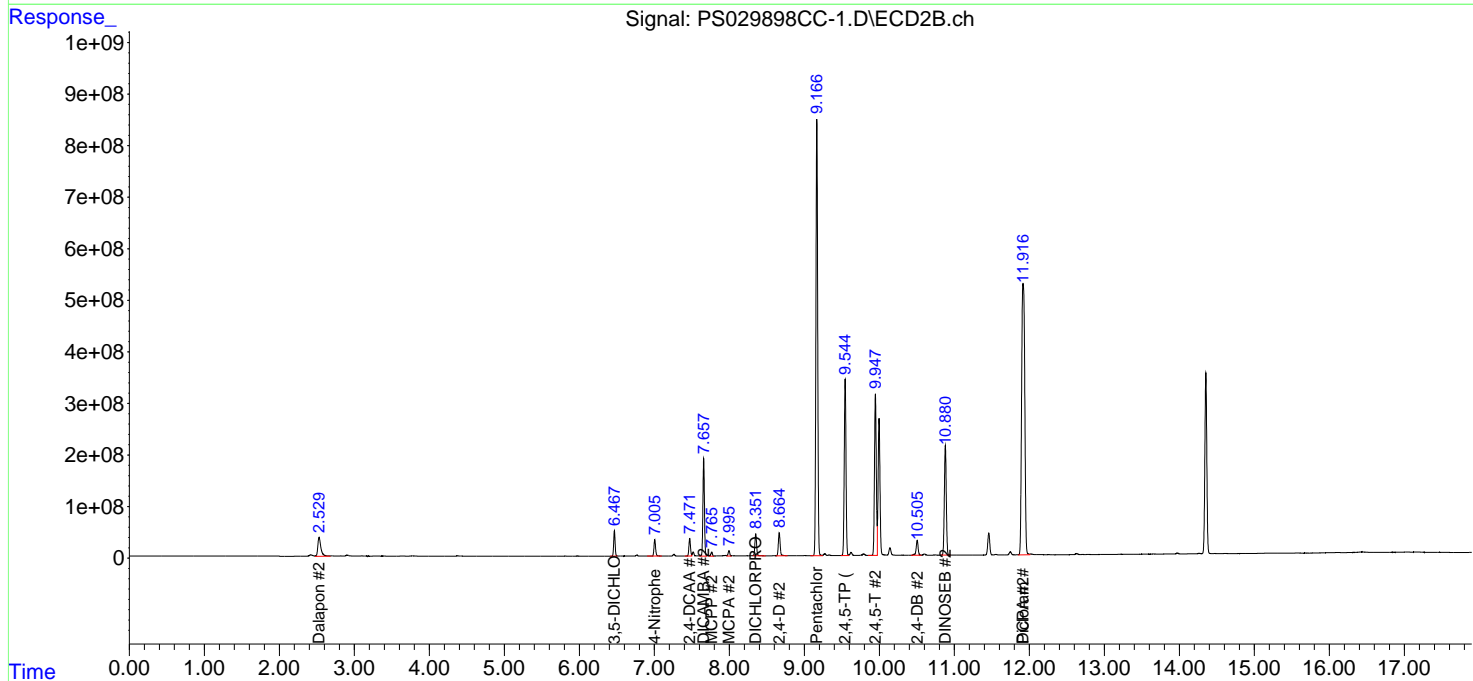
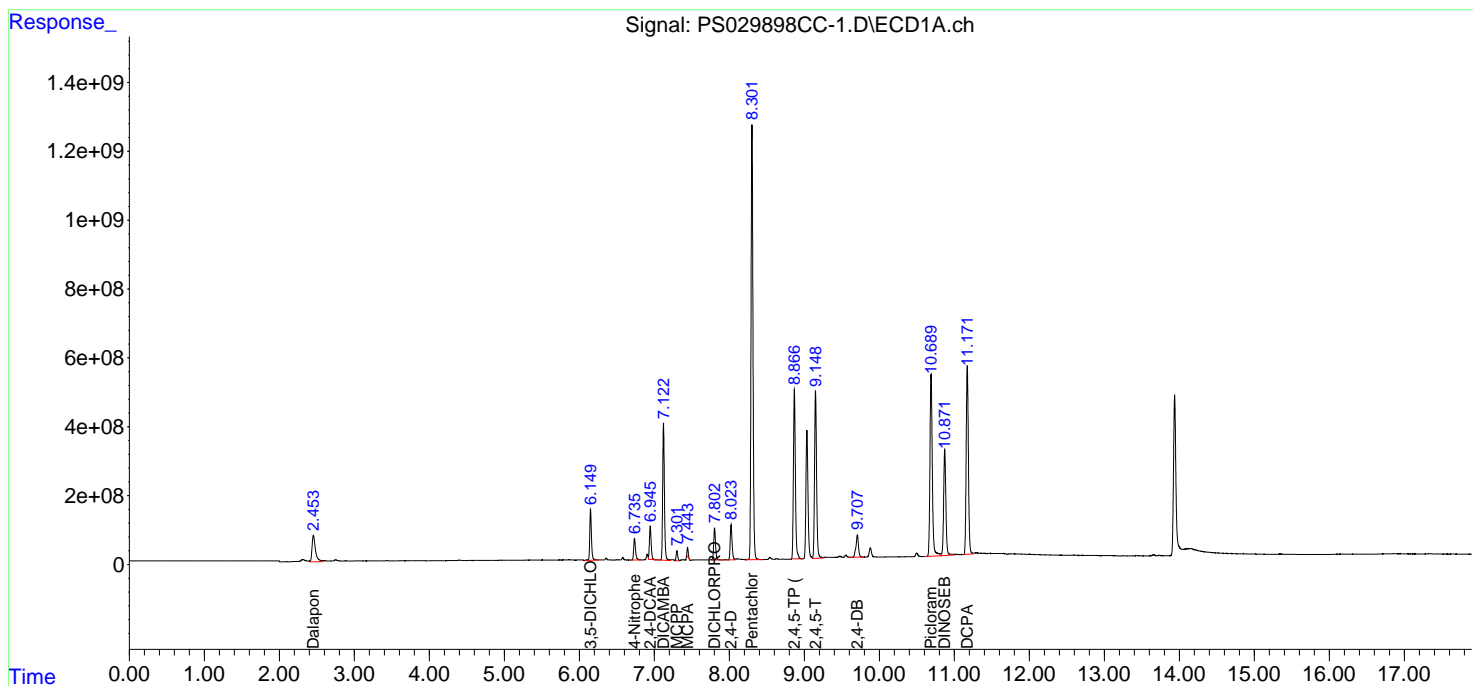
(f)=RT Delta > 1/2 Window (#)=Amounts differ by > 25% (m)=manual int.

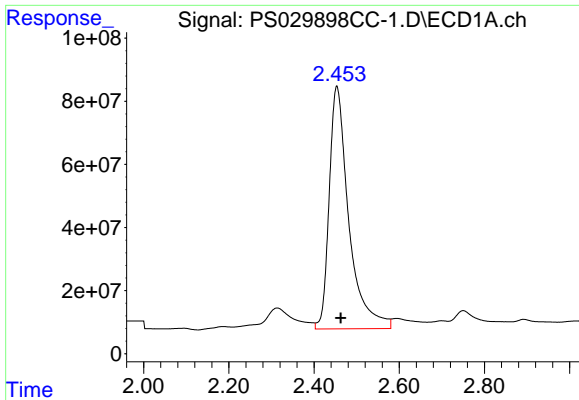
Data Path : Z:\pestpcbsrv\HPCHEM1\ECD_S\Data\PS042125\
 Data File : PS029898CC-1.D
 Signal(s) : Signal #1: ECD1A.ch Signal #2: ECD2B.ch
 Acq On : 22 Apr 2025 02:54
 Operator : AR\AJ
 Sample : HSTDCCC750
 Misc :
 ALS Vial : 3 Sample Multiplier: 1

Instrument :
 ECD_S
 ClientSampleId :

Integration File signal 1: autoint1.e
 Integration File signal 2: autoint2.e
 Quant Time: Apr 22 03:52:14 2025
 Quant Method : Z:\pestpcbsrv\HPCHEM1\ECD_S\Method\PS040225.M
 Quant Title : 8080.M
 QLast Update : Wed Apr 02 23:52:55 2025
 Response via : Initial Calibration
 Integrator: ChemStation

Volume Inj. : 1 µl
 Signal #1 Phase : ZB-MR1 Signal #2 Phase: ZB-MR2
 Signal #1 Info : 30M x 0.32mm x0.5 Signal #2 Info : 30M x 0.32mm x 0.25µm

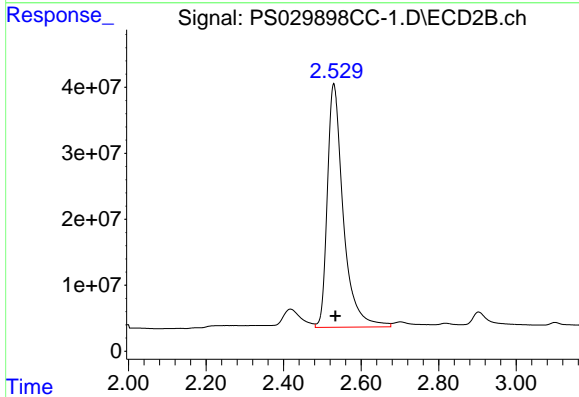




#1 Dalapon

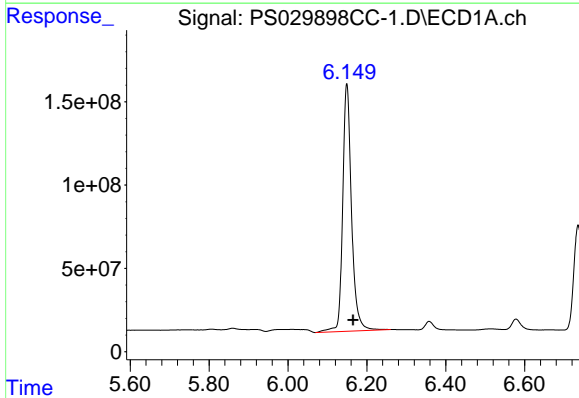
R.T.: 2.454 min
 Delta R.T.: -0.009 min
 Response: 2457145677
 Conc: 724.31 ng/ml

Instrument :
 ECD_S
 ClientSampleId :



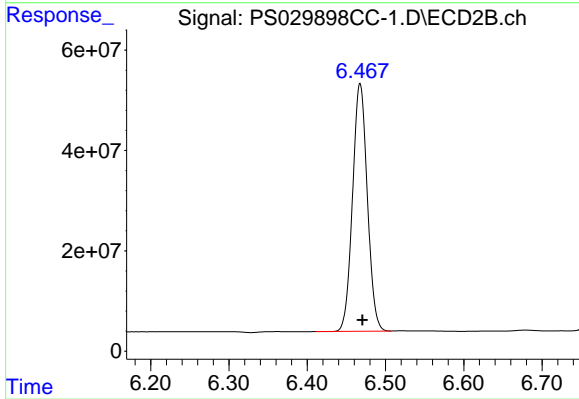
#1 Dalapon

R.T.: 2.530 min
 Delta R.T.: -0.004 min
 Response: 1051996302
 Conc: 662.63 ng/ml



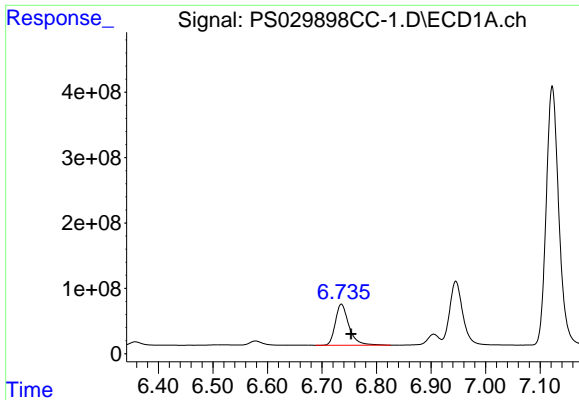
#2 3,5-DICHLOROBENZOIC ACID

R.T.: 6.149 min
 Delta R.T.: -0.016 min
 Response: 2312939919
 Conc: 768.99 ng/ml



#2 3,5-DICHLOROBENZOIC ACID

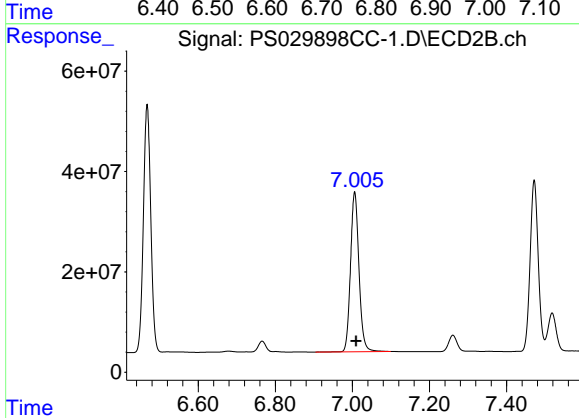
R.T.: 6.468 min
 Delta R.T.: -0.003 min
 Response: 646652130
 Conc: 669.72 ng/ml



#3 4-Nitrophenol

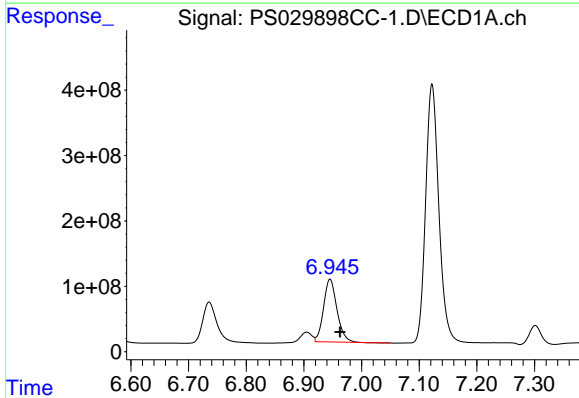
R.T.: 6.736 min
 Delta R.T.: -0.018 min
 Response: 1088914466
 Conc: 775.14 ng/ml

Instrument :
 ECD_S
 ClientSampleId :



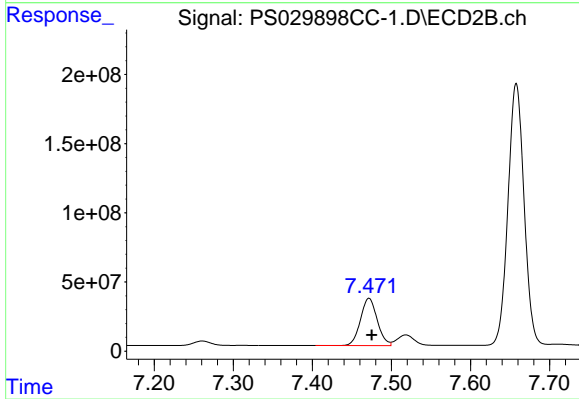
#3 4-Nitrophenol

R.T.: 7.006 min
 Delta R.T.: -0.004 min
 Response: 481025613
 Conc: 678.46 ng/ml



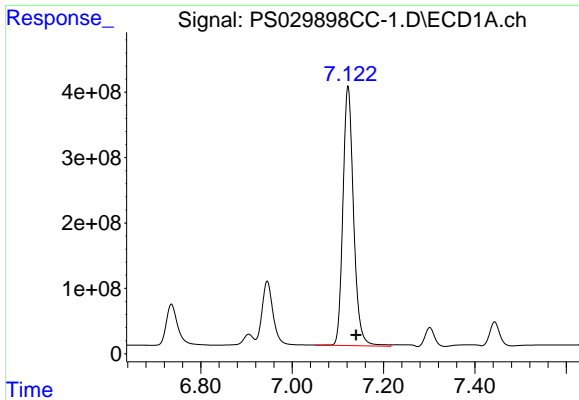
#4 2,4-DCAA

R.T.: 6.945 min
 Delta R.T.: -0.017 min
 Response: 1550973925
 Conc: 760.72 ng/ml



#4 2,4-DCAA

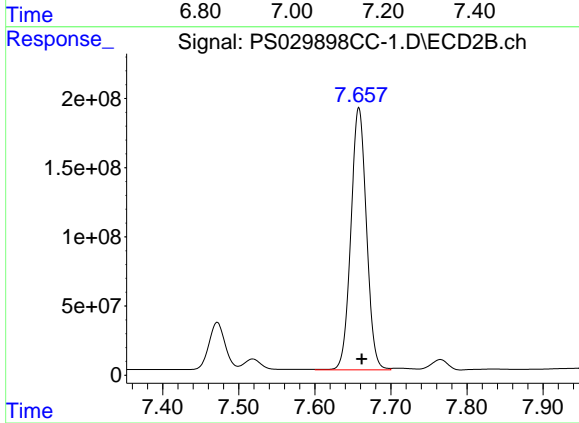
R.T.: 7.472 min
 Delta R.T.: -0.003 min
 Response: 504183914
 Conc: 739.80 ng/ml



#5 DICAMBA

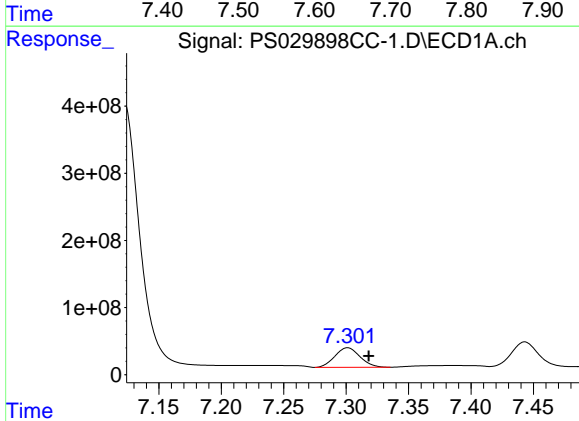
R.T.: 7.122 min
 Delta R.T.: -0.018 min
 Response: 6407945313
 Conc: 770.01 ng/ml

Instrument :
 ECD_S
 ClientSampleId :



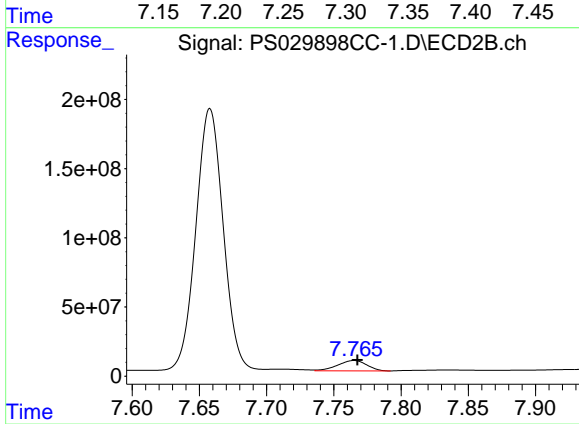
#5 DICAMBA

R.T.: 7.658 min
 Delta R.T.: -0.004 min
 Response: 2690265513
 Conc: 728.40 ng/ml



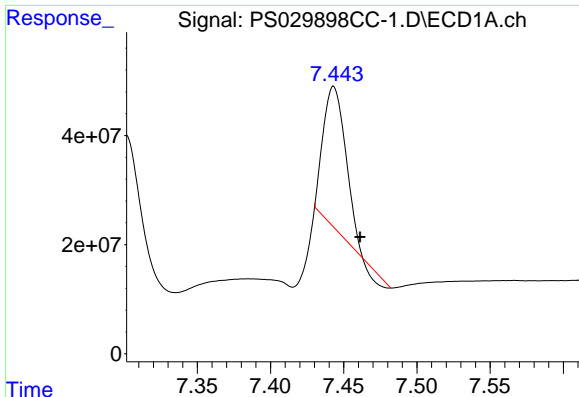
#6 MCP

R.T.: 7.301 min
 Delta R.T.: -0.017 min
 Response: 407570147
 Conc: 75.20 ug/ml



#6 MCP

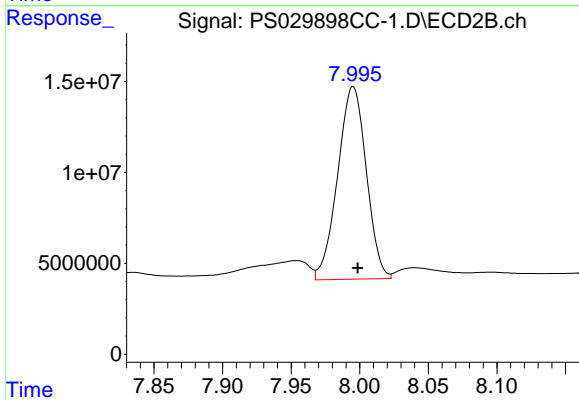
R.T.: 7.765 min
 Delta R.T.: -0.003 min
 Response: 113061802
 Conc: 66.96 ug/ml



#7 MCPA

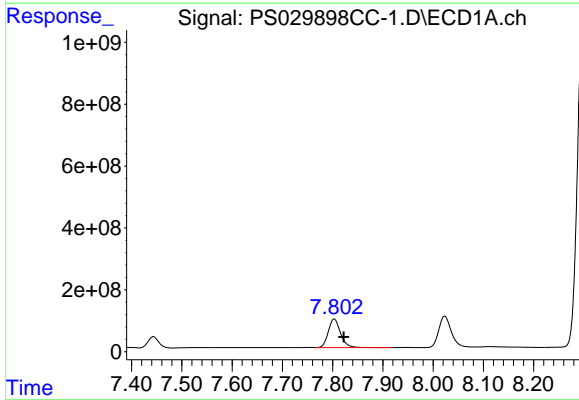
R.T.: 7.443 min
 Delta R.T.: -0.018 min
 Response: 264750820
 Conc: 36.42 ug/ml

Instrument :
 ECD_S
 ClientSampleId :



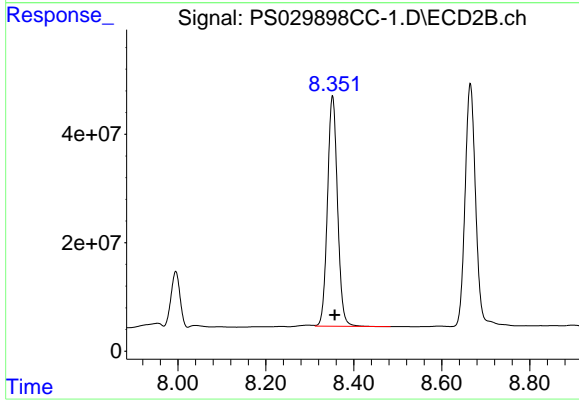
#7 MCPA

R.T.: 7.995 min
 Delta R.T.: -0.003 min
 Response: 153854374
 Conc: 67.62 ug/ml



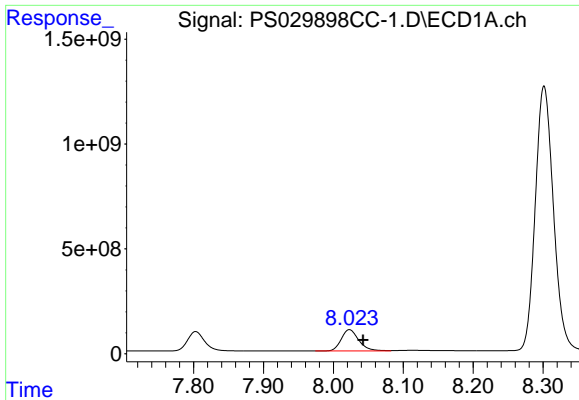
#8 DICHLORPROP

R.T.: 7.803 min
 Delta R.T.: -0.019 min
 Response: 1574230579
 Conc: 715.74 ng/ml



#8 DICHLORPROP

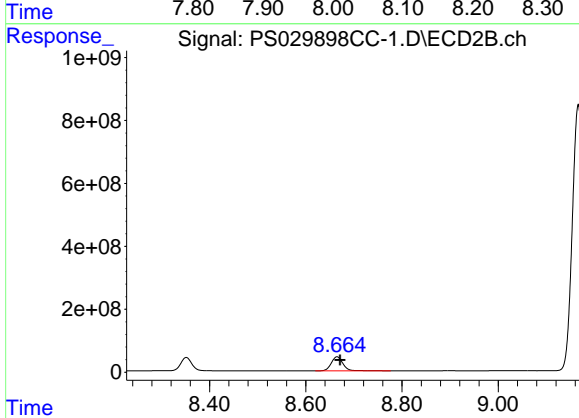
R.T.: 8.352 min
 Delta R.T.: -0.005 min
 Response: 674143825
 Conc: 697.76 ng/ml



#9 2,4-D

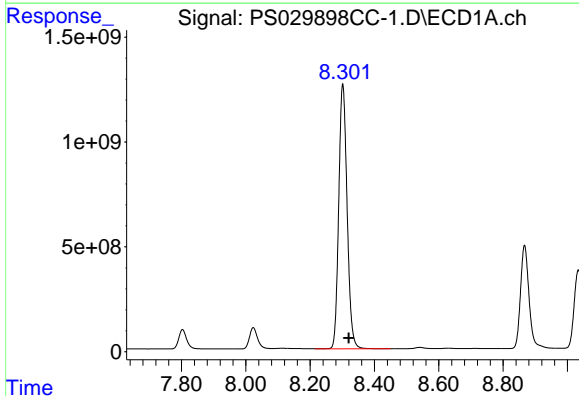
R.T.: 8.023 min
Delta R.T.: -0.019 min
Response: 1776266171
Conc: 737.17 ng/ml

Instrument :
ECD_S
ClientSampleId :



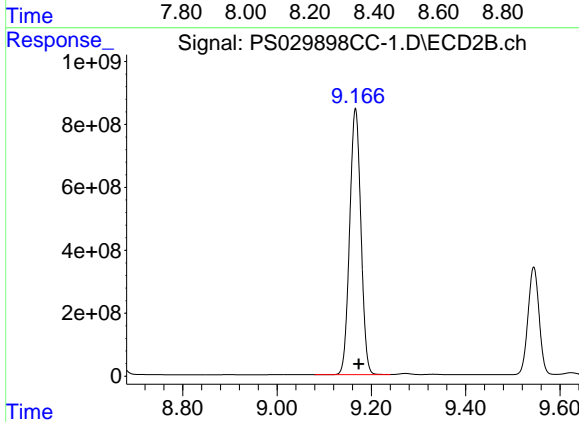
#9 2,4-D

R.T.: 8.665 min
Delta R.T.: -0.006 min
Response: 746706354
Conc: 692.38 ng/ml



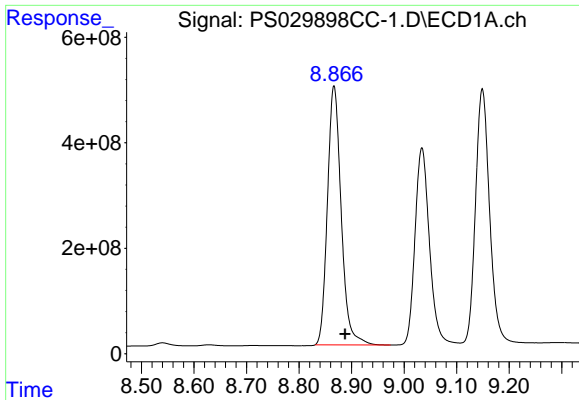
#10 Pentachlorophenol

R.T.: 8.301 min
Delta R.T.: -0.019 min
Response: 22786962575
Conc: 749.45 ng/ml



#10 Pentachlorophenol

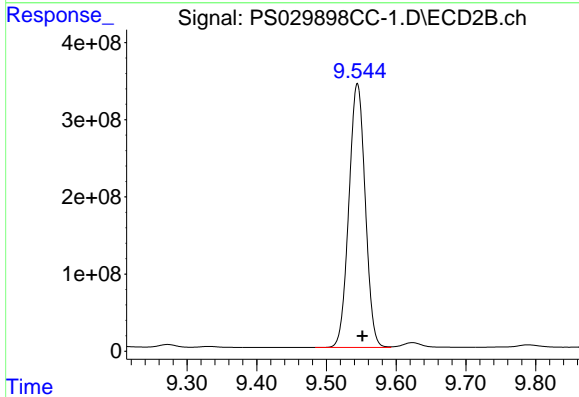
R.T.: 9.166 min
Delta R.T.: -0.007 min
Response: 14005815841
Conc: 781.24 ng/ml



#11 2,4,5-TP (SILVEX)

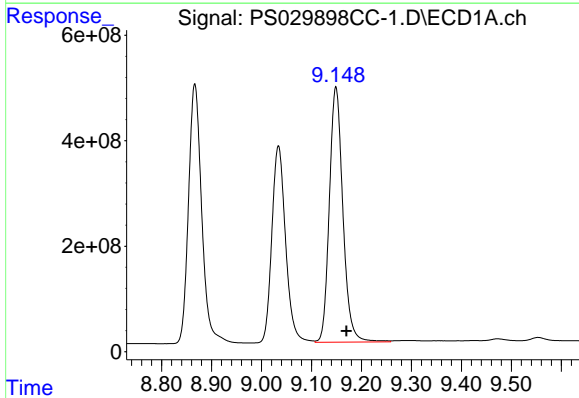
R.T.: 8.867 min
 Delta R.T.: -0.021 min
 Response: 8936156405
 Conc: 769.34 ng/ml

Instrument :
 ECD_S
 ClientSampleId :



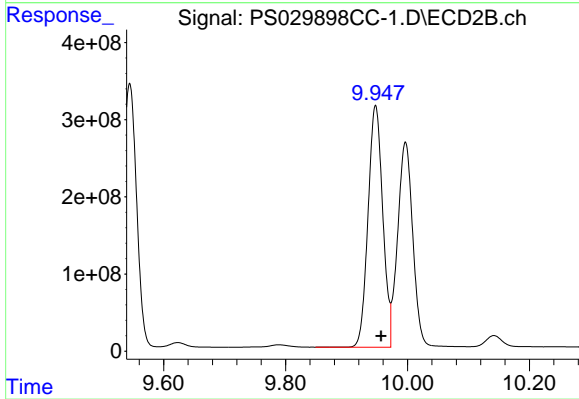
#11 2,4,5-TP (SILVEX)

R.T.: 9.544 min
 Delta R.T.: -0.007 min
 Response: 5562810714
 Conc: 771.22 ng/ml



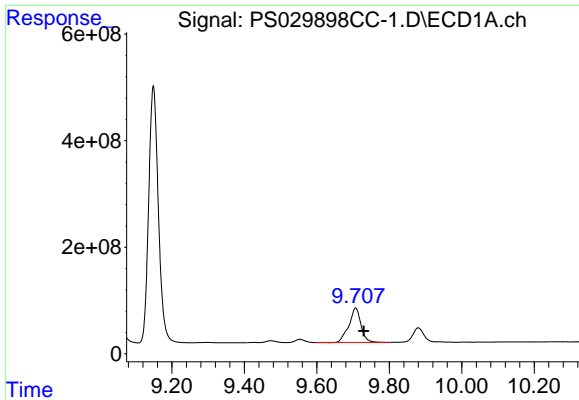
#12 2,4,5-T

R.T.: 9.149 min
 Delta R.T.: -0.021 min
 Response: 9102284505
 Conc: 791.20 ng/ml



#12 2,4,5-T

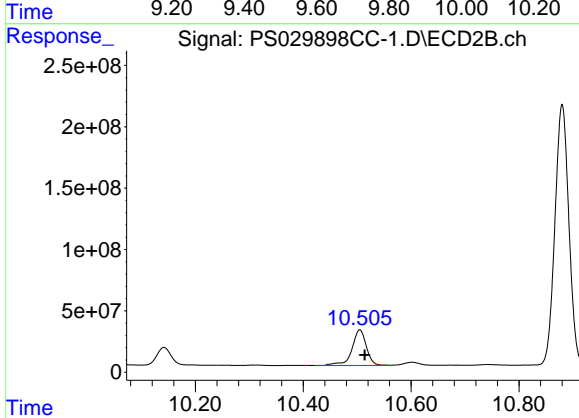
R.T.: 9.948 min
 Delta R.T.: -0.009 min
 Response: 5239766741
 Conc: 781.72 ng/ml



#13 2,4-DB

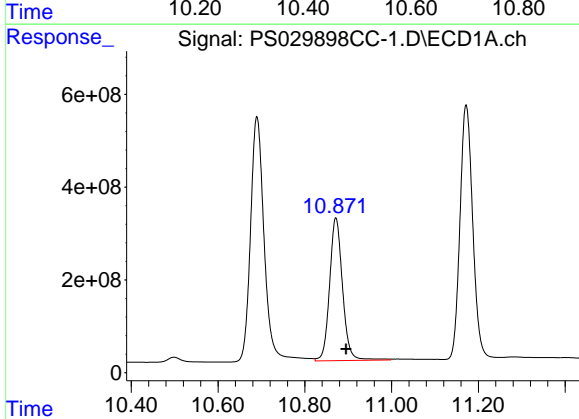
R.T.: 9.707 min
 Delta R.T.: -0.022 min
 Response: 1494625804
 Conc: 822.69 ng/ml

Instrument :
 ECD_S
 ClientSampleId :



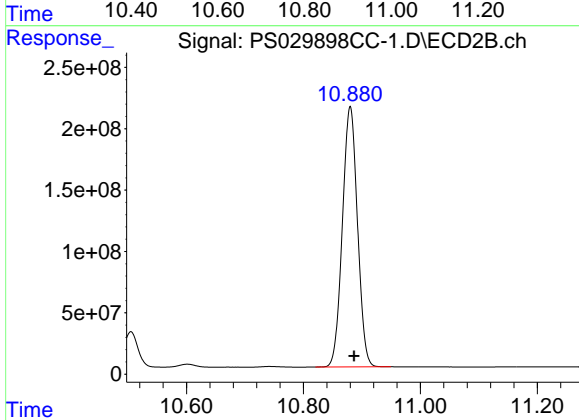
#13 2,4-DB

R.T.: 10.505 min
 Delta R.T.: -0.009 min
 Response: 536236543
 Conc: 722.71 ng/ml



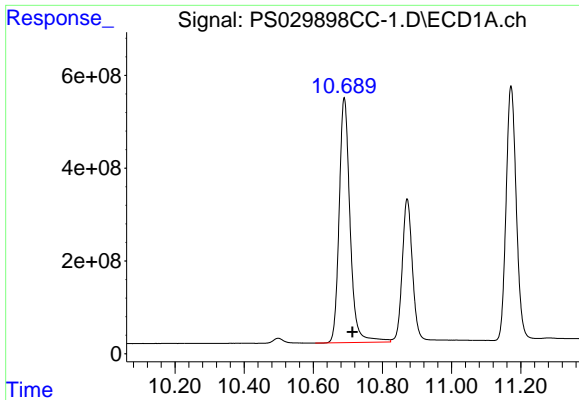
#14 DINOSEB

R.T.: 10.872 min
 Delta R.T.: -0.023 min
 Response: 6386004848
 Conc: 756.45 ng/ml



#14 DINOSEB

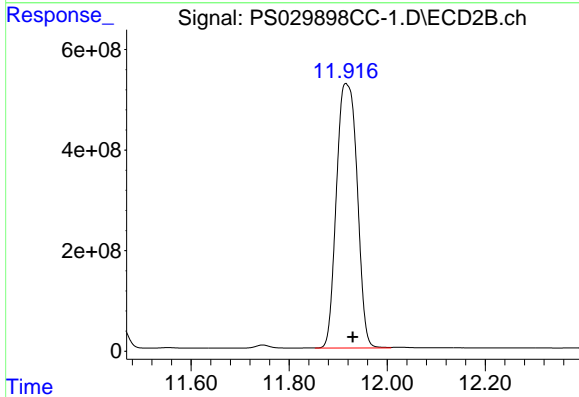
R.T.: 10.880 min
 Delta R.T.: -0.007 min
 Response: 3795123068
 Conc: 742.28 ng/ml



#15 Picloram

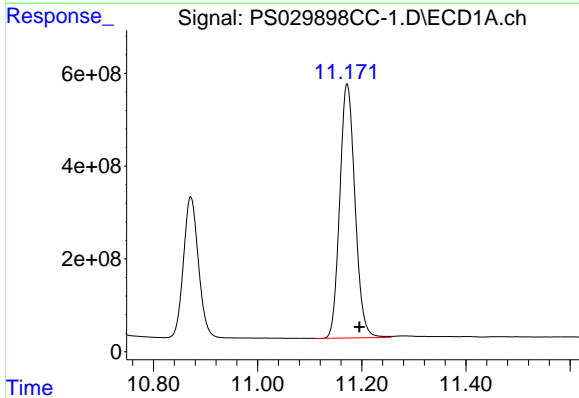
R.T.: 10.690 min
 Delta R.T.: -0.024 min
 Response: 11569776399
 Conc: 746.42 ng/ml

Instrument :
 ECD_S
 ClientSampleId :



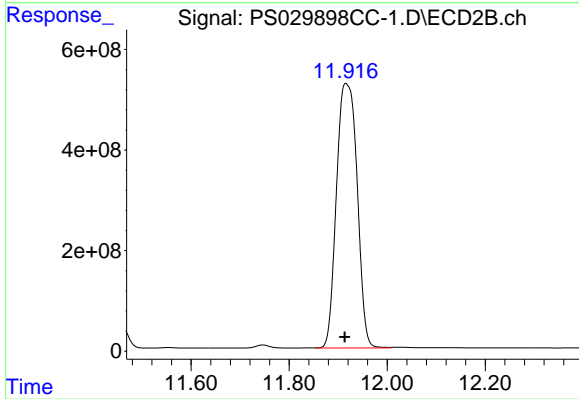
#15 Picloram

R.T.: 11.916 min
 Delta R.T.: -0.014 min
 Response: 15414865489
 Conc: 1303.65 ng/ml



#16 DCPA

R.T.: 11.172 min
 Delta R.T.: -0.023 min
 Response: 11126905641
 Conc: 796.71 ng/ml



#16 DCPA

R.T.: 11.916 min
 Delta R.T.: 0.002 min
 Response: 15414865489
 Conc: 1741.66 ng/ml