

Data Path : Z:\pestpcbsrv\HPCHEM1\ECD\_S\Data\PS042222\  
 Data File : PS019127.D  
 Signal(s) : Signal #1: ECD1A.ch Signal #2: ECD2B.ch  
 Acq On : 22 Apr 2022 20:12  
 Operator : AJ\MA  
 Sample : I.BLK  
 Misc :  
 ALS Vial : 2 Sample Multiplier: 1

Instrument :  
 ECD\_S  
 ClientSampleId :

Integration File signal 1: autoint1.e  
 Integration File signal 2: autoint2.e  
 Quant Time: Apr 22 22:50:44 2022  
 Quant Method : Z:\pestpcbsrv\HPCHEM1\ECD\_S\Method\PS041822.M  
 Quant Title : 8080.M  
 QLast Update : Mon Apr 18 17:28:16 2022  
 Response via : Initial Calibration  
 Integrator: ChemStation

Volume Inj. : 2 µl  
 Signal #1 Phase : Rtx-CLPesticides Signal #2 Phase: Rtx-CLPesticides2  
 Signal #1 Info : 30M x 0.32mm x0.5 Signal #2 Info : 30M x 0.32mm x 0.25µm

	Compound	RT#1	RT#2	Resp#1	Resp#2	ng/ml	ng/ml
-----							
System Monitoring Compounds							
4) S	2,4-DCAA	7.220	6.797	1364.9E6	367.9E6	364.947	506.800 #
Target Compounds							
7) T	MCPA	7.682f	0.000	15377843	0	1.020	N.D. #
8) T	DICHLORPROP	0.000	7.619	0	4022056	N.D.	4.813
11) T	2,4,5-TP ...	9.261f	8.629	16078344	4226192	<MDL	<MDL #
12) T	2,4,5-T	9.492	0.000	8372023	0	<MDL	N.D. #
13) T	2,4-DB	10.001	9.483f	12069610	6454188	3.427	11.644 #
14) T	DINOSEB	11.144f	0.000	26518791	0	1.733	N.D. #
15) T	Picloram	10.991	10.888	21873360	5034034	<MDL	<MDL #
16) T	DCPA	11.521f	0.000	374705	0	<MDL	N.D. #

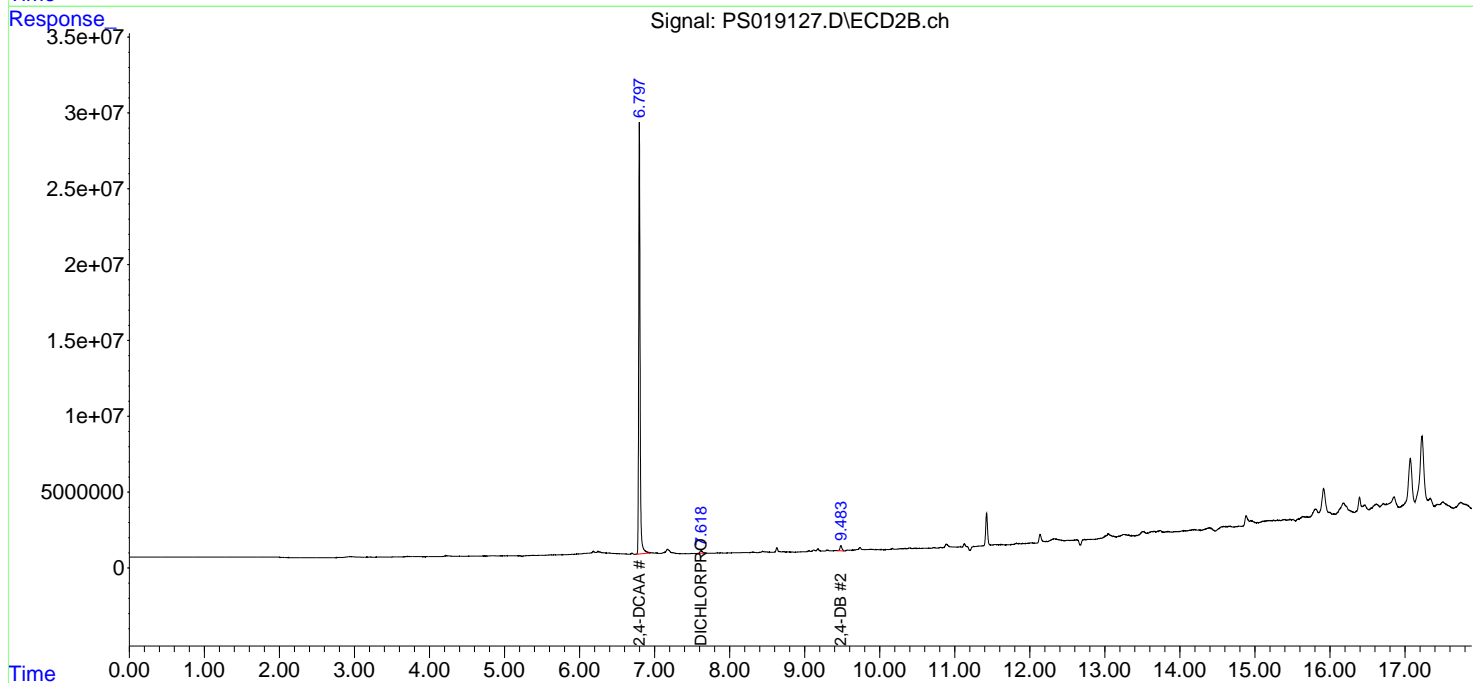
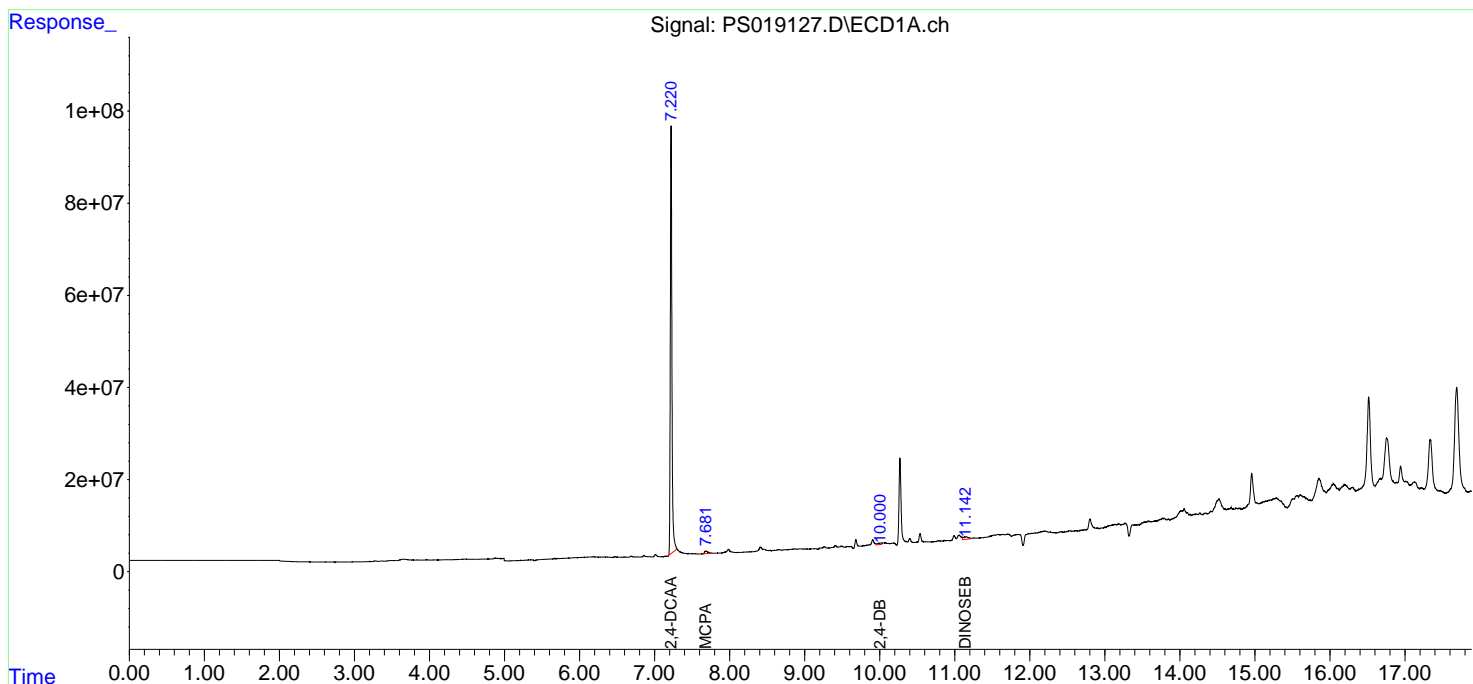
(f)=RT Delta > 1/2 Window (#)=Amounts differ by > 25% (m)=manual int.

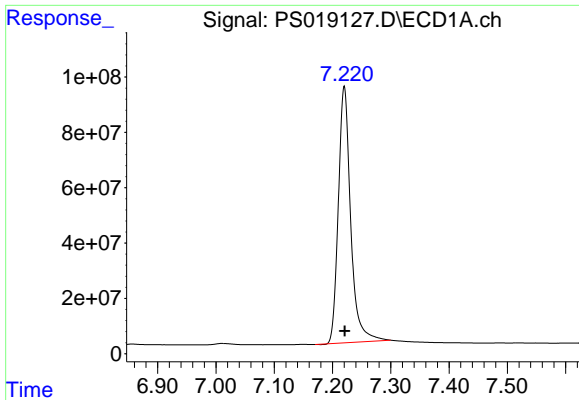
Data Path : Z:\pestpcbsrv\HPCHEM1\ECD\_S\Data\PS042222\  
 Data File : PS019127.D  
 Signal(s) : Signal #1: ECD1A.ch Signal #2: ECD2B.ch  
 Acq On : 22 Apr 2022 20:12  
 Operator : AJ\MA  
 Sample : I.BLK  
 Misc :  
 ALS Vial : 2 Sample Multiplier: 1

Instrument :  
 ECD\_S  
 ClientSampleId :

Integration File signal 1: autoint1.e  
 Integration File signal 2: autoint2.e  
 Quant Time: Apr 22 22:50:44 2022  
 Quant Method : Z:\pestpcbsrv\HPCHEM1\ECD\_S\Method\PS041822.M  
 Quant Title : 8080.M  
 QLast Update : Mon Apr 18 17:28:16 2022  
 Response via : Initial Calibration  
 Integrator: ChemStation

Volume Inj. : 2 µl  
 Signal #1 Phase : Rtx-CLPesticides Signal #2 Phase: Rtx-CLPesticides2  
 Signal #1 Info : 30M x 0.32mm x 0.5 Signal #2 Info : 30M x 0.32mm x 0.25µm

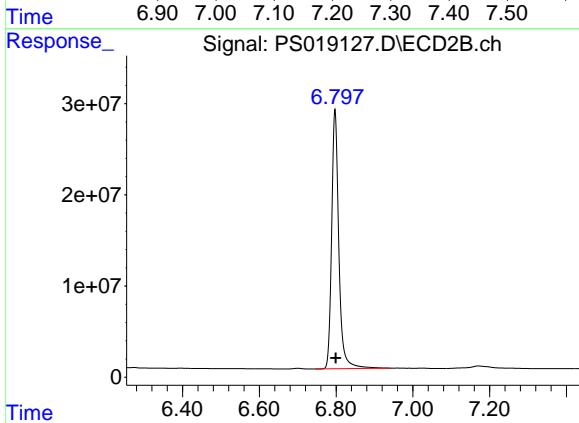




#4 2,4-DCAA

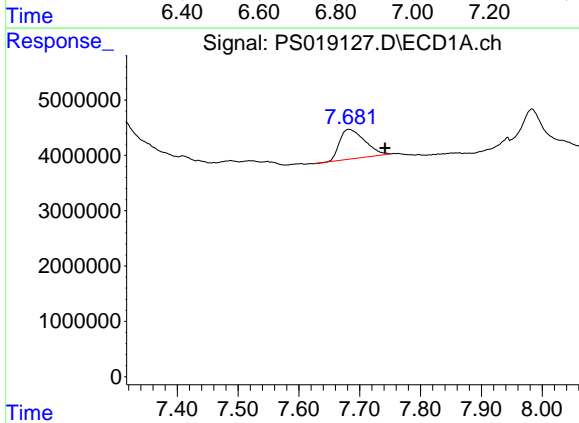
R.T.: 7.220 min  
 Delta R.T.: 0.000 min  
 Response: 1364921115  
 Conc: 364.95 ng/ml

Instrument :  
 ECD\_S  
 ClientSampleId :



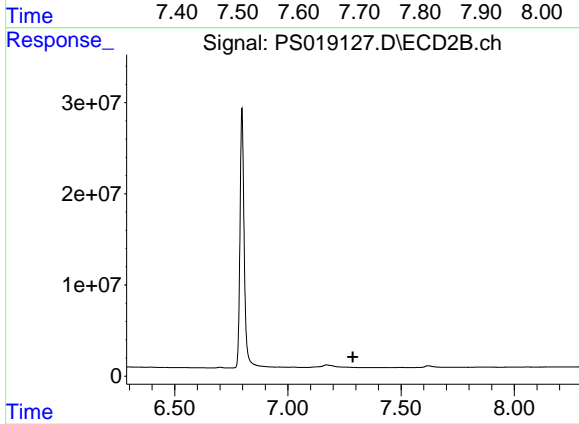
#4 2,4-DCAA

R.T.: 6.797 min  
 Delta R.T.: -0.002 min  
 Response: 367874144  
 Conc: 506.80 ng/ml



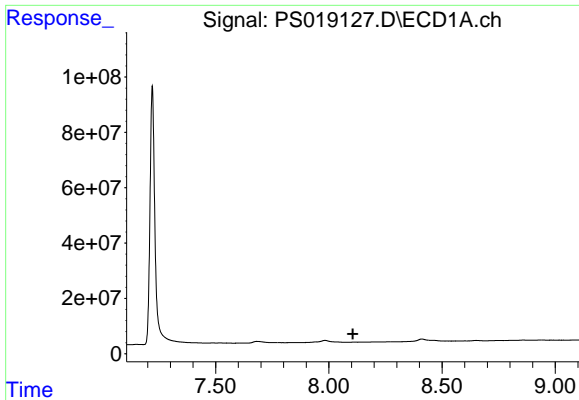
#7 MCPA

R.T.: 7.682 min  
 Delta R.T.: -0.060 min  
 Response: 15377843  
 Conc: 1.02 ug/ml



#7 MCPA

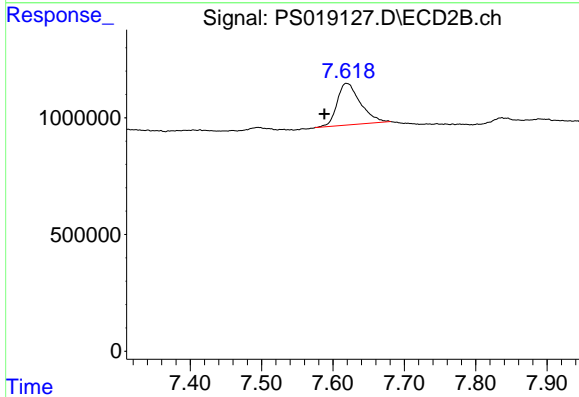
R.T.: 0.000 min  
 Exp R.T. : 7.287 min  
 Response: 0  
 Conc: N.D.



#8 DICHLORPROP

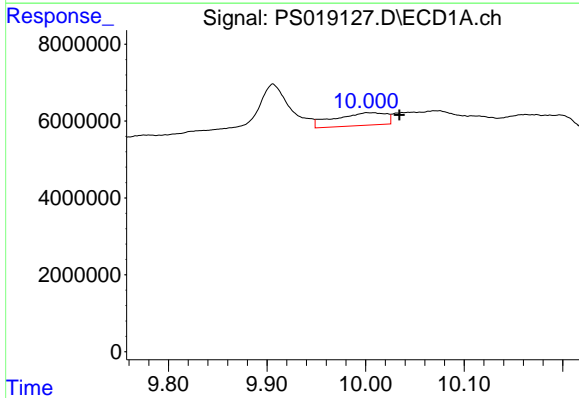
R.T.: 0.000 min  
 Exp R.T.: 8.106 min  
 Response: 0  
 Conc: N.D.

Instrument :  
 ECD\_S  
 ClientSampleId :



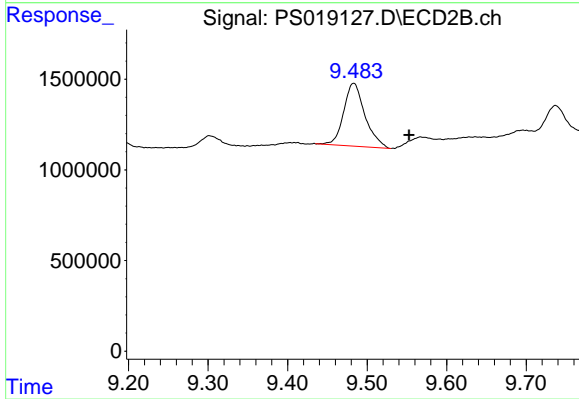
#8 DICHLORPROP

R.T.: 7.619 min  
 Delta R.T.: 0.031 min  
 Response: 4022056  
 Conc: 4.81 ng/ml



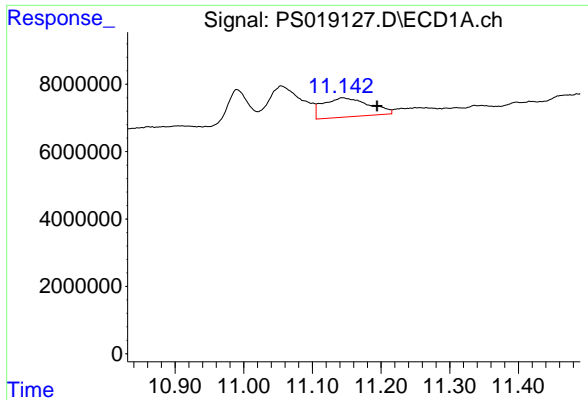
#13 2,4-DB

R.T.: 10.001 min  
 Delta R.T.: -0.033 min  
 Response: 12069610  
 Conc: 3.43 ng/ml



#13 2,4-DB

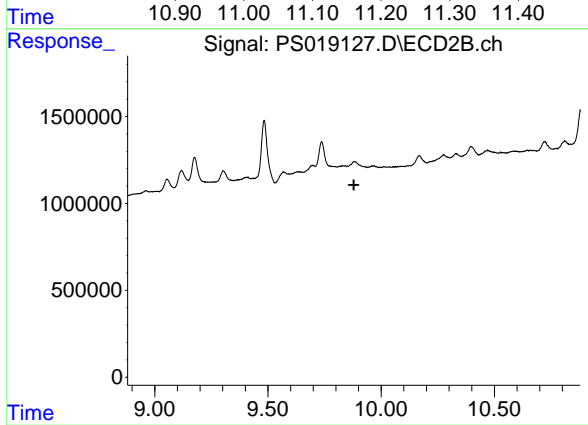
R.T.: 9.483 min  
 Delta R.T.: -0.069 min  
 Response: 6454188  
 Conc: 11.64 ng/ml



#14 DINOSEB

R.T.: 11.144 min  
 Delta R.T.: -0.050 min  
 Response: 26518791  
 Conc: 1.73 ng/ml

Instrument :  
 ECD\_S  
 ClientSampleId :



#14 DINOSEB

R.T.: 0.000 min  
 Exp R.T. : 9.880 min  
 Response: 0  
 Conc: N.D.